



6 (5)  
From CD 13

Arts, Parks, Health, Aging and  
Los Angeles River  
Chair  
Personnel and Animal  
Welfare  
Vice-Chair

**MITCH O'FARRELL**  
Councilmember  
Thirteenth Council District

Education and Neighborhoods  
Member  
Innovation, Technology and  
General Services  
Member  
Public Safety  
Member

November 1, 2013

Ms. Tami Podesta  
Branch Chief, Division of Environmental Planning  
California Department of Transportation, District 7  
100 S. Main Street  
Los Angeles, CA 90012

Date: 6-3-15  
Submitted in PNWR Committee  
Council File No: 05-0173  
Item No.: 6  
Deputy: public

Re: Glendale Boulevard-Hyperion Avenue Complex of Bridges Improvement Project

Dear Ms. Podesta,

The Glendale Boulevard-Hyperion Avenue Viaduct is an important bridge complex that links the neighborhoods of Atwater Village, Silver Lake and Los Feliz. It is an integral thoroughfare for vehicles, pedestrians and bicycles and should continue to serve all multimodal needs.

The City of Los Angeles Department of Public Works, Bureau of Engineering, is the lead agency for this improvement project and began community outreach in October 2002. Now, approximately 11 years later, the project has progressed and an initial Community Workshop was held on the evening of Wednesday September 25, 2013, at which varying issues regarding speed and access were expressed. A subsequent public hearing was held the evening of Monday, October 28<sup>th</sup>, 2013. Community stakeholders have expressed great interest in this project and it is in the spirit of civic engagement that I write this letter.

The improvement project includes a seismic retrofit, the resolution of design deficiencies, traffic circulation improvements and the restoration of the bridge's historic balustrades. Additionally, the improvement project proposes to widen traffic lanes, install a median barrier to separate northbound and southbound traffic lanes and to consolidate the two existing sidewalks into a single sidewalk on the west side of the Hyperion Bridge. The restored balustrades are to be protected from auto collisions with a 3-ft. crash barrier, which will interrupt the interior view.

Project mitigations include the construction of an alternate pedestrian and bicycle crossing over the Los Angeles River across the existing Red Car piers and an adjacent green space that will help infiltrate stormwater before it is discharged into the River. The new pedestrian crossing is to be completed before pedestrian access is temporarily disallowed on the bridge during the construction period. The bridge will remain operational for vehicles throughout construction with at least one operational traffic lane in each direction at all times.

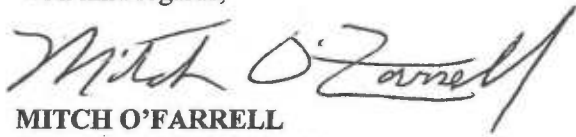
The design phase of the proposed project is currently only at 35%, and as the design further evolves, I want to express my willingness to explore options that would include dedicated bicycle lanes on the Hyperion and Glendale sections, modification to traffic lane widths as currently proposed, a signalized



crosswalk that would span the entire width of the bridge, the removal of the center median barrier and/or decorative treatment and the removal and/or alternative placement of the 3-ft. roadway-edge crash barriers, which are intended to protect the balustrades. I believe it is important to fully explore these options to ensure that the bridge is safe, respects the surrounding neighborhoods and serves vehicles, pedestrians and bicycles.

To that end, as the proposed project progresses I will continue to engage community stakeholders and will form a citizens advisory group to ensure accountability and transparency in the design process. I believe that through a coordinated effort, the Glendale Boulevard-Hyperion Avenue Complex of Bridges Improvement Project can be completed in a manner that is timely and responsive to community stakeholder input.

With kind regards,



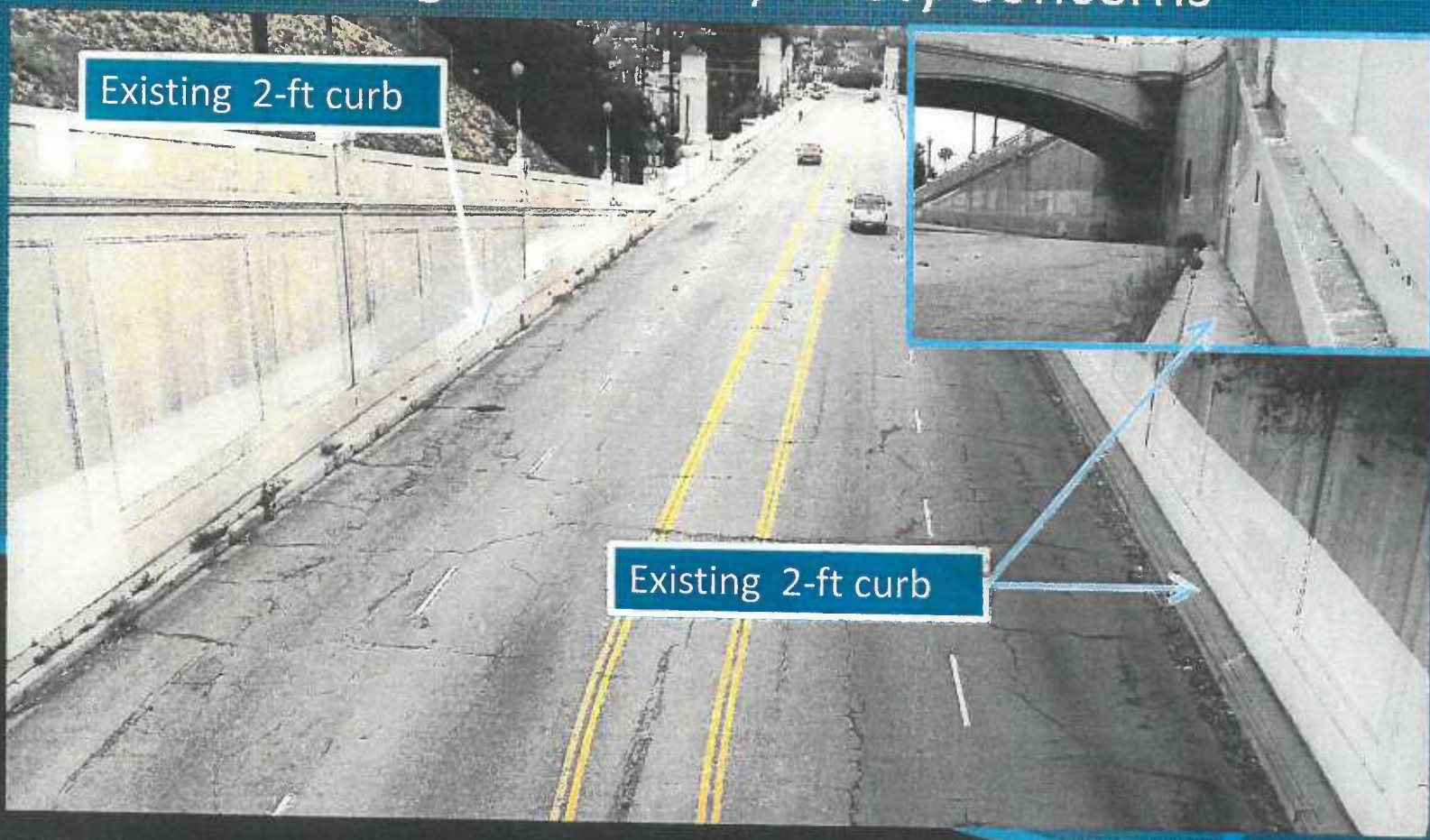
**MITCH O'FARRELL**  
Councilmember, District 13  
Los Angeles City Council  
City of Los Angeles

CC: Mayor Eric Garcetti  
Councilmember Tom LaBonge, District 4  
Deborah Weintraub, Bureau of Engineering



# GLENDALE BL – HYPERION AVE COMPLEX OF BRIDGES IMPROVEMENT PROJECT

## Existing Conditions/Safety Concerns







TWEETS 72 FOLLOWING 116 FOLLOWERS 130 FAVORITES 43

Follow

### LA Grim Streets

@LAGrimStreets

too many of LA's streets are grim, dangerous speedways that kill and maim drivers, cyclists and pedestrians. we dream of #LAGreatStreets & #VisionZero

27 Photos and videos



Search Twitter

Tweets Tweets & replies Photos & videos

LA Grim Streets retweeted



Los Angeles Walks @LosAngelesWalks · May 12

Come out Friday at 10am to show your support for sidewalks on both sides of Hyperion Bridge [bit.ly/1zWY5kX](http://bit.ly/1zWY5kX) #saveoursidewalk

Retweets: 13 Likes: 7

LA Grim Streets retweeted



Northeast L.A. Bikes @NELA\_BIKES · May 12

.@LAMayorsOffice makes 1 @LAGreatStreets and then thinks it's ok to make Hyperion Bridge a @LAGrimStreets. ugh. #visionzero

Retweets: 1 Likes: 2

View conversation

LA Grim Streets @LAGrimStreets · May 11

Have an account? Log in **s we need real sidewalks on both sides of the Hyperion Bridge @TomLaBonge @MitchOFarrell**



Retweets: 2 Likes: 4

LA Grim Streets @LAGrimStreets · May 3



**STUDENTS GOING TO AND FROM SCHOOL**

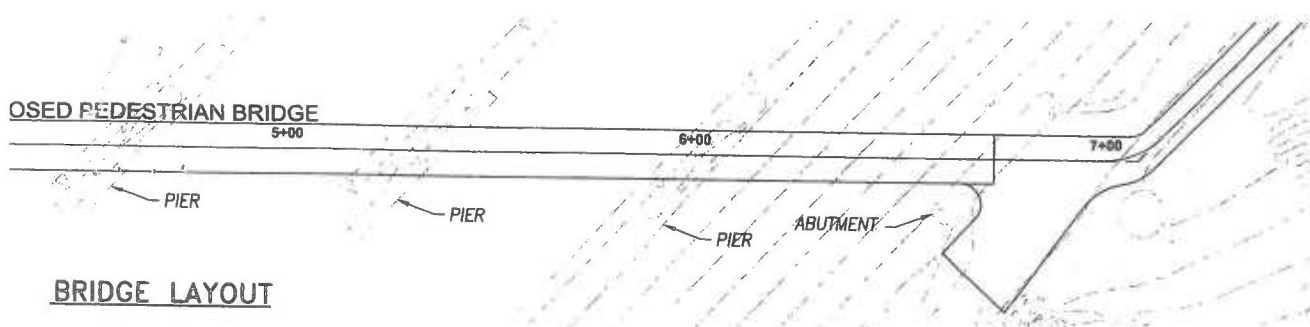


**OVER THE GLENDALE HYPERION BRIDGE**



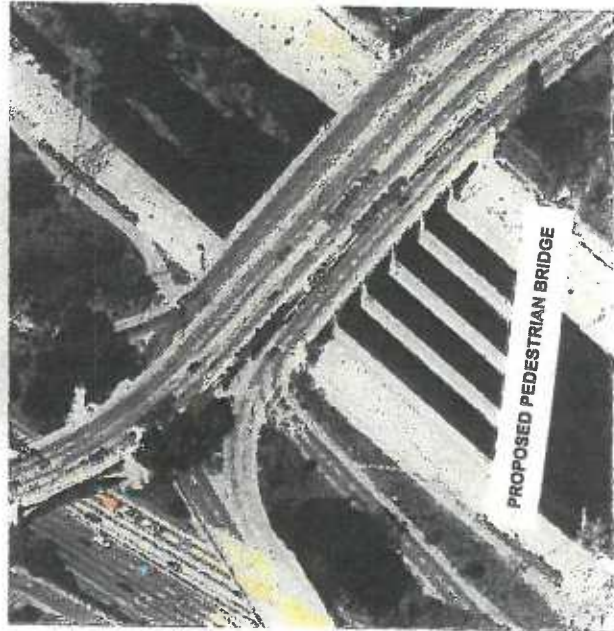
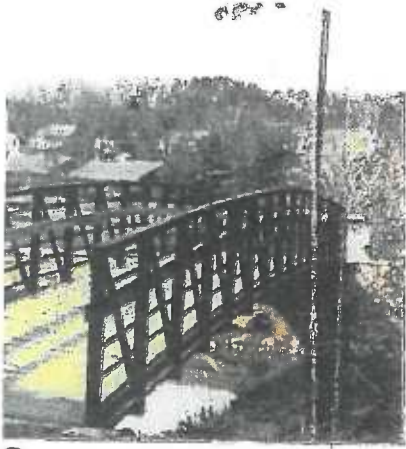


EXISTING PEDESTRIAN BRIDGE



NEW Features

BRIDGE LAYOUT



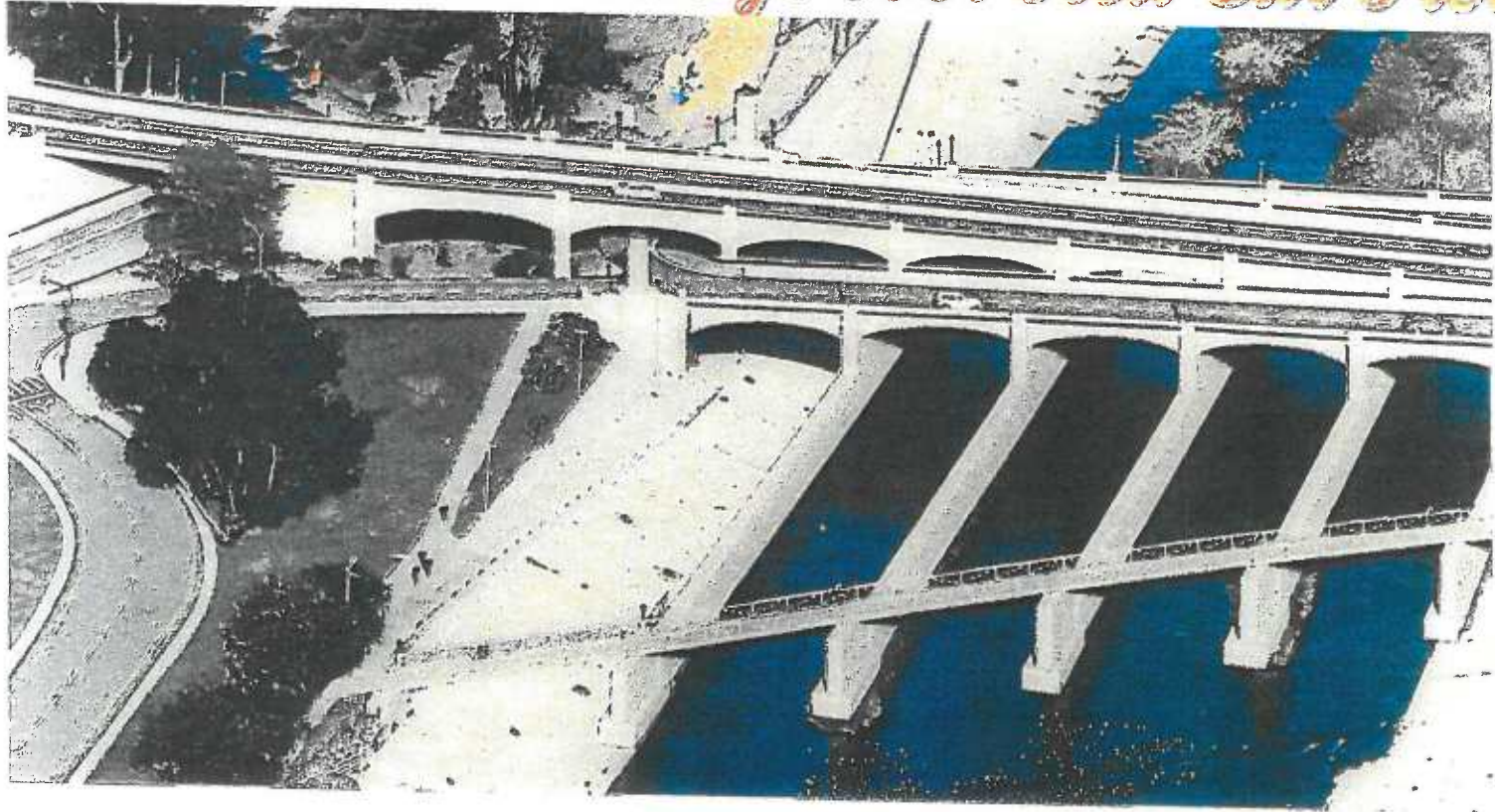
LOCATION



PRE-FABRICATED PEDESTRIAN BRIDGE OPTIONS

CONCEPTUAL PROPOSAL  
PEDESTRIAN BRIDGE OVER LOS ANGELES RIVER  
GLENDALE BOULEVARD & HYPERION AVENUE  
SEPTEMBER 2014

*History of Project Development:  
New Pedestrian Bridge over Red Car Piers*



Funding and Studies need CALTRANS Approval



# History of Project Development: Bridge Re-Alignment of I-5 Northbound Off- Ramp



Funding and Design Concept need CALTRANS Approval



Future Mid-Block  
Pedestrian Crossing  
proposed by CD 13

**GLENDALE - HYPERION VIADUCT IMPROVEMENT  
PEDESTRIAN CIRCULATION**



ERIC GARCETTI  
MAYOR  
TOM LABONGE  
COUNCIL MEMBER  
DISTRICT 14  
MITCH O'FARRELL  
COUNCIL MEMBER  
DISTRICT 15

NORTH  
↘



- KEYNOTES**
1. GLENDALE BOULEVARD NB BRIDGE WIDENING
  2. GLENDALE BOULEVARD SB BRIDGE WIDENING
  3. HYPERION AVENUE BRIDGE OVER LA RIVER REHABILITATION
  4. HYPERION AVENUE BRIDGE OVER I-5 SEISMIC RETROFIT
  5. HYPERION AVENUE BRIDGE OVER RIVERSIDE DRIVE SEISMIC RETROFIT
  6. WAVERLY DRIVE OVER HYPERION AVE HISTORIC RAILING REPLICATION
  7. INTERSTATE 5 NORTH BOUND RAMPS MODIFICATION
  8. PEDESTRIAN & BICYCLIST LINKAGE IMPROVEMENT
  9. WATER QUALITY TREATMENT BASIN

- LEGEND**
- PEDESTRIAN FACILITIES
  - CRIBWORKING

**ENGINEERING**  
CITY ENGINEER: GARY LEE MOORE, PE, ENV SP

PROJECT TITLE: GLENDALE BLVD - HYPERION AVE  
COMPLEX OF BRIDGES IMPROVEMENT  
TOTAL COST: \$50,000,000