



OFFICE OF THE CITY ATTORNEY

ROCKARD J. DELGADILLO

CITY ATTORNEY

May 29, 2008

The Honorable Antonio Villaraigosa
Mayor of Los Angeles
City Hall
Los Angeles, CA 90012
Attention: June Lagmay, Mayor's Office

Honorable City Council
of the City of Los Angeles
City Hall
Los Angeles, CA 90012
Attention: City Clerk of Los Angeles

Re: Special Emphasis Victim Assistance Program Grant for FY 2008-2009
C.F. No. 07-1994

Contact persons: Michiko Reyes Tel. 213 978-7020
Lucie F. Mazmanian Tel. 213 978-7199
Kathy Colobong Tel. 213 485-0744

The Office of the City Attorney's is transmitting for your review and approval the Special Emphasis Victim Assistance Program (SEVAP) Grant for its sixteenth year of funding from July 1, 2008 to June 30, 2009. The Office of the City Attorney is requesting authorization to accept the proposed grant award agreement between the City and the Governor's Office of Emergency Services, Law Enforcement & Victim Services Division, to extend the operation of the SEVAP Grant for Fiscal Year 2008-2009. The grant provides comprehensive services to victims and witnesses of crime in the underserved Korean-American community.

In 2007, the Los Angeles Police Department (LAPD) reported the occurrence of 13,463 robberies, 12,870 aggravated assault and 400 homicides. This number represents all reported crimes from the nineteen LAPD Divisions. Of these numbers, approximately 12% of the reported cases have occurred in the reporting divisions (LAPD Wilshire & Rampart), which encompass the city's Korean-American community. Although there are a few community groups available to provide various services to residents in the Korean community, only the Office of the City Attorney's SEVAP provides comprehensive services specifically for victims of crime in the Korean-American community. The SEVAP grant funds two full-time advocates who are responsible for the specific delivery of services to these victims. During the fiscal year 2006-07, the two victim advocates assigned to the program provided comprehensive services to 1,754 Korean-American new victims and survivors of crime and 543 continuing victims and survivors of crime. The continuing victims and survivors of crime represent cases from previous periods that are still open.

JUN 03 2008
**AUDITS & GOVERNMENTAL
EFFICIENCY**

AN EQUAL EMPLOYMENT OPPORTUNITY - AFFIRMATIVE ACTION EMPLOYER

200 NORTH MAIN STREET • LOS ANGELES, CA 90012-4131 • 213.978.8100 • 213.978.8310 TDD



The objective of the project is to provide mandated services to surviving family members of homicide victims, victims of robbery/assaults, drunk driving and hit & run, hate crimes, domestic violence, adult sexual assault and child & elder abuse in the Korean-American community of Los Angeles. The goal is to assist victims to recover from the psychological, emotional and out-of-pocket financial losses incurred due to the injuries suffered as a direct result of the crime and to increase their active participation and involvement in the criminal justice system. Within twenty-four hours of any crisis referral to the SEVAP staff, contact is made with the victims to assess their needs for services and arrange for the provision of these services by local agencies. Emergency services pertain to the immediate material needs that include the provision of emergency food, clothing, lodging, or transportation. The SEVAP maintains an emergency allocation fund (maximum \$100 per incident) and provides victims with direct emergency assistance pursuant to established guidelines. SEVAP staff refers clients to network agencies that provide services appropriate to the special needs of victims in the Korean-American community.

Since its start sixteen years ago, the program has identified and developed a resource and referral network of private, governmental, and community-based agencies and organizations that provide needed services to victims. Volunteer professional counselors have been recruited to provide initial psychological counseling to victims. The SEVAP staff provides follow-up counseling services and, when necessary, referral for group treatment/support and therapy through appropriate agency referrals. Telephone counseling is also provided when appropriate, with a minimum of 50% of the follow-up contacts conducted through field visits. The SEVAP staff provides victims with both verbal and printed information about the procedures and functioning of the criminal justice system.

The total project cost is \$151,010. Grant funds of \$110,000 will be used for the salary of two witness service coordinators, office supplies and to maintain a victim emergency fund that provides victims with direct emergency assistance. The required match and remaining balance is \$41,010 and consists of \$33,860 for fringe benefits which is included in the City's benefit calculations and \$7,150 for professional and community volunteers. Please note that no reserve fund advance is required.

The Office has two existing position authorizations for the witness service coordinator positions. The 2007-2008 Personnel Authority Resolution (PAR) includes one witness service coordinator position and the Departmental Personnel Ordinance (DPO) includes the second witness service coordinator position.

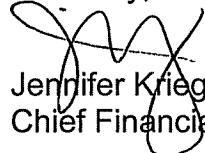
We, therefore, request that the City Council, subject to the approval of the Mayor:

1. Authorize the City Attorney or his designee to SUBMIT the grant award in the amount of \$110,000 for the period of July 1, 2008 to June 30, 2009 to the Governor's Office of Emergency Services, Law Enforcement & Victim Services Division.
2. APPROVE the accompanying contract between the City and the Governor's Office of Emergency Services, Law Enforcement & Victim Services Division in the amount of \$110,000.
3. Authorize the City Attorney or his designee to ACCEPT the funding in the amount of \$110,000 for the Special Emphasis Victim Assistance Program and to EXECUTE said contract, subject to the approval of the Office of the City Attorney as to form and legality.
4. That the City Council, subject to the approval of the Mayor, AUTHORIZE the Controller to:
 - a. Establish a receivable from the State of California in the amount of \$110,000
 - b. Establish the following new appropriation accounts within Fund 368, Department 12 upon the receipt of grant funds:

Account E401 – Personal Services	\$105,850
Account E403 – Operating Expenses	\$ 4,150
5. AUTHORIZE the City Administrative Officer or her designee to approve the Certification of Assurance of Compliance.
6. AUTHORIZE the City Attorney or his designee to prepare Controller instructions for any necessary technical adjustments, subject to the approval of the City Administrative Officer, and instruct the Controller to implement the instructions.

Thank you for your consideration in this matter.

Sincerely,



Jennifer Krieger
Chief Financial & Administrative Officer

cc: Kathy Colobong
Lucie F. Mazmanian
Derek Tennell
Ida Rubio--CAO



GOVERNOR'S OFFICE OF EMERGENCY SERVICES

LAW ENFORCEMENT AND VICTIM SERVICES DIVISION

3650 SCHRIEVER AVENUE
MATHER, CALIFORNIA 95655
(916) 324-3217
FAX: (916) 324-8554



Application Cover Sheet

RFA PROCESS

SPECIAL EMPHASIS VICTIM ASSISTANCE PROGRAM

Submitted by:

Derek Tennell

Special Emphasis Victim Assistance Program
Office of the Los Angeles City Attorney
201 North Los Angeles St., LA MALL Space 301
Los Angeles, CA 90012
(213) 978-2097

OES ID# _____

Award # _____

**GOVERNOR'S OFFICE OF EMERGENCY SERVICES
LAW ENFORCEMENT AND VICTIM SERVICES DIVISION**

GRANT AWARD FACE SHEET (OES A301)

The Governor's Office of Emergency Services, hereafter designated OES, hereby makes a grant award of funds to the following:

1. **Grant Recipient:** City of Los Angeles

hereafter designated Recipient, in the amount and for the purpose and duration set forth in this grant award.

2. **Implementing Agency:** Office of the Los Angeles City Attorney

3. **Project Title:** Special Emphasis Victim Assistance Prog. 4. **Grant Period:** 7/1/08 to 6/30/09

*Select the fund source(s) from the lists below and or type the appropriate acronym in box 8 or 9 and enter the amount(s) from each source. Please do not enter both State and Federal fund sources on the same line. Add any cash match(s) and enter total in Block 10G.

Fund Source	A. State	B. Federal	C. Total	D. Cash Match	E. In-Kind Match	F. Total Match	G. Total Project Cost
5.07 VOCA		110,000		20,350	7,150	27,500	
6. Fund Source							
7. Fund Source							
8.							
9.							
10. TOTALS		110,000	110,000	20,350	7,150	27,500	10G. Grand Total: 137,500

11. This grant award consists of this title page, the application for the grant, which is attached and made a part hereof, and the Assurance of Compliance forms which are being submitted. I hereby certify I am vested with the authority, and have the approval of the City/County Financial Officer, City Manager, County Administrator, or Governing Board Chair, to enter into this grant award agreement; and all funds received pursuant to this agreement will be spent exclusively on the purposes specified. The grant recipient signifies acceptance of this grant award and agrees to administer the grant project in accordance with the statute(s), the OES Program Guidelines, the *OES Recipient Handbook*, the OES audit requirements, and the terms of the program as stated in the applicable RFP or RFA. The grant recipient further agrees to all legal conditions and terms incorporated by reference in the applicable RFP or RFA and agrees that the allocation of funds is contingent on the enactment of the State Budget.

12. **Official Authorized to Sign for Applicant/Grant Recipient:** _____ **Federal Employer ID Number:** 95-6000735

Name: Rockard J. Delgadillo Title: City Attorney

Payment Mailing Address: 200 N. Main St. Room 800 City: Los Angeles Zip: 90012

Telephone: (213) 978-8100 FAX: (213) 978-8312 Email: Rockard.Delgadillo@lacity.org
(area code) (area code)

Signature _____ Date: _____

[FOR OES USE ONLY]

I hereby certify upon my own personal knowledge that budgeted funds are available for the period and purposes of this expenditure stated above.

OES Fiscal Officer Date OES Director (or designee) Date

Office of Emergency Services of the State of California
Special Emphasis Victim Assistance Program
Budget--FY 08-09
Period of 7-1-08 to 6-30-09

BUDGET CATEGORY AND LINE-ITEM DETAIL	VOCA FUNDS	VOCA MATCH	TOTAL
A. Personal Services - Salaries/Employee Benefits	80%	20%	100%
Salaries:			
1 Victim Service Coordinator: \$2,001 p/p x 26.1 p/p	100%	52,219	52,219
1 Victim Service Coordinator: \$1,972 p/p x 26.1 p/p	100%	51,470	51,470
Total Salaries			
Employee Benefits:			
Fringe Benefits:	36,021	2,161	20,350
The City General Fund's share of the Fringe Benefits	13,510		22,511
Approved CAP 29 rate for FY 06-07	34.74%		
Fringe Benefits Breakdown:			
Retirement (Civilians)	24.48		
Flex Benefit Program	6.70		
Employee Assistance	0.02		
Ordinance Life Insurance	0.17		
Medicare	1.00		
Union Sponsored Benefits	0.04		
Unusual Sick/Vacation Payout	0.93		
Unemployment Claims	0.03		
Workers Compensation	0.85		
Carry Forward, Positive	0.54		
	34.74		
In-kind match:			
Volunteer counselors and community volunteers' projected hours:			
1-4 Professional Volunteers - Psychotherapy Expert Counselors			
7 hours X 110.00 p/h		770	
1-12 Community Volunteers			
425 hours X 15.00 p/h		6,380	
TOTAL	105,850	27,500	133,350

Office of Emergency Services of the State of California
Special Emphasis Victim Assistance Program
Budget--FY 08-09
Period of 7-1-08 to 6-30-09

BUDGET CATEGORY AND LINE-ITEM DETAIL	VOCA FUNDS	VOCA MATCH	TOTAL
B. Operating Expenses	80%	20%	100%
Operating Supplies:			
Supplies for Fax/printers: \$75/month X 12 months	900		900
Office supplies: paper/box/pens/pencils/folders: \$187.50/month x 12	2,250		2,250
Victim Emergency Services Fund: \$100 X 10 victims	1,000		1,000
TOTAL	4,151	0	\$ 4,150

Office of Emergency Services of the State of California
 Special Emphasis Victim Assistance Program
 Budget--FY 08-09
 Period of 7-1-08 to 6-30-09

BUDGET CATEGORY AND LINE-ITEM DETAIL	VOCA FUNDS	VOCA MATCH	TOTAL
C. Equipment	80%	20%	100%
CATEGORY TOTAL	0.00	0.00	0.00
PROJECT TOTAL	110,000	27,500	137,500
FUND DISTRIBUTION	FEDERAL	STATE	CASH MATCH IN-KIND MATCH
1. Amount of Funds	110,000		20,350 7,150
2. Percentage of Funds	80%		15% 5%

**Office of the Los Angeles City Attorney
SEVAP Grant
FY 08-09
Budget Narrative**

The funding received from the OES SEVAP Grant will pay for the salaries and a portion of the employee fringe benefits of two full time victim service coordinators. The two staff members meet the minimum entry level standards consistent with the goal of increased competency of victim/witness personnel and have completed the forty-hour "Entry Advance Level Victim Advocate Training" as well as the "Advance Level Victim Advocate Training." The SEVAP staff is assigned to the Central Victim Assistance Program Office located at 201 North Los Angeles Street, Mall Space 301, Los Angeles, CA 90012, for at least 50% of the time and the balance of the time is in a field office located in the LAPD Koreatown substation at 3330 W. 8th Street, Los Angeles, CA 90026. The victim advocates provide assistance to victims of crime and to surviving family members of homicide victims in the Korean Community of Los Angeles. Program activities and services provided include: crisis intervention counseling, emergency assistance, follow-up counseling, resource and referrals, criminal justice advocacy, accompaniment to law enforcement offices, court support, translation services, court support/notification, case information, assistance with restitution advocacy, victim impact statement and parole notification, community outreach and program presentations, assistance in filing for the State Victims of Crime Compensation Claims, recruiting, training and supervising program volunteers.

The funds also pay for operating expenses that are necessary to support the SEVAP stated objectives and activities such as the Victim Emergency Fund and office supplies.

Project Narrative

PROBLEM STATEMENT: The City of Los Angeles covers a geographic service area of 468 square miles and has a population of 4,018,080 according to the most recent statistics. The Korean American population in the City of Los Angeles has grown to an estimated 160,000 people, making it the largest Korean concentration of Koreans outside of Korea. Forty-six percent of the Korean Americans in California reside in the City of Los Angeles. Foreign-born Koreans have the highest percentage of persons with difficulty in English compared with other Asians. In Los Angeles, 43 % of Korean speakers have difficulty with English.

During 2006, the Los Angeles Police Department (LAPD) reported the occurrence of 14,235 robberies, 14,118 aggravated assault and 481 homicides. This number represents all reported crimes from all nineteen LAPD Divisions. Of these numbers, approximately 13 % of the reported cases have occurred in the reporting divisions (LAPD Wilshire & Rampart), which oversee the city's Korean American Community (eg., LA Koreatown). Although there are a few community groups available to provide various services to residents in the Korean Community, there are no existing programs other than the LA Office of the City Attorney's SEVAP to provide comprehensive services specifically for victims of crime. This specialized area of service is not offered by any other existing community, organization and/or agency in LA. The funds received through the SEVAP Grant will fund two full-time advocates. These two advocates are responsible for the specific delivery of services to these victims.

PLAN: The objective of the project is to continue to provide mandated services to victims of robbery/assaults; surviving family members of homicide victims, drunk driving and hit & run victims, hate crimes, domestic violence, adult sexual assault and child and elder abuse in the Korean Community of Los Angeles. The goal is to assist victims to recover from the psychological, emotional and out-of-pocket financial losses incurred due to the injuries suffered as a direct result of the crime and to increase their active participation and involvement in the Criminal Justice System. Upon request or when deemed necessary, project staff provides state

mandated services. Within 24 hours of any crisis referral to the SEVAP staff, contact is made with the victim to assess their needs and provide needed services at the time or will immediately arrange for the provision of these services by local agencies. Emergency services pertain to the immediate material needs that include the provision of emergency food, clothing, lodging, or transportation. The SEVAP maintains an allocation fund (maximum \$100) and provides victims with direct emergency assistance pursuant to established guidelines. SEVAP staff refers clients to network agencies that provide services appropriate to the special needs of victims in the underserved Korean Community. Since the start of its operation ten years ago, the program has identified and developed a resource and referral network of private, governmental, and community-based agencies and organizations that provide needed services to victims in the Korean Community. SEVAP staff considers the specific cultural and socioeconomic factors of the Korean Community when responding to the victims' emotional/psychological needs. Volunteer professional counselors have been recruited to provide initial psychological counseling to victims. SEVAP staff provides follow-up counseling services and, when necessary, referral for group treatment/support and therapy through appropriate agency referrals. Telephone counseling may be provided when appropriate, with a minimum of 50% of the follow-up contacts conducted through field visits in the Korean Community. SEVAP staff provides victims with both verbal and printed information about the procedures and functioning of the CJS. Counseling is provide to relieve anxiety and/or confusion concerning the Criminal Justice System process. Other services include: bilingual translation; court support; criminal case information and directions to the courtroom, help with the Victim Impact Statement in the Criminal Justice Process, assistance to victims in obtaining Court Ordered Restitution, information and assistance on the release of property held as evidence, intervention with an employer on the victim's behalf where the criminal event has caused or will cause the employee to lose time from work and possibly jeopardize employment, information and assistance to victims and/or family members of victims in filing for the State of California Victims of Crime

Compensation Application for financial reimbursement of their eligible medical, psychotherapy, funeral/burial, wage and job retraining losses incurred from injuries/death suffered due to the crime.

SEVAP Program Brochures in English and Korean provide information on project services available to victims in the Korean Community and how these services may be obtained.

Information is also available on the Internet at the Los Angeles Office of the City Attorney's official website <http://www.cityofla.org> or through direct E-mail with SEVAP staff: Seong Chung: Seong.Chung@lacity.org or Jennifer Sung: Jennifer.sung@lacity.org.

The project staff also assists in the development of an active volunteer component utilizing various community and academic resources. Community volunteers provide support services to project staff such as making follow-up contacts with crime victims and assisting in the filing of the Victims of Crime Compensation Claims. SEVAP staff recruits and maintains volunteer psychotherapy consultants in the Korean Community to provide direct psychotherapy treatment to Korean victims of crime referred by SEVAP staff. Psychotherapy consultants also provide training and expert consultation to assist project staff and volunteers to provide culturally responsive direct services to victims. All qualified volunteers are processed by the Office of the City Attorney's Personnel Department for final approval and selection. Volunteers must complete an application, pass a background check through the Department of Motor Vehicle and the Department of Justice and be fingerprinted. They must also complete a 40-hour training curriculum covering the dynamics of victimization, cultural and socioeconomic factors on the impact of victimization, the criminal justice process, information and referral, case management, basic needs assessment, immediate/follow-up response services to victims and the State Victims of Crime Compensation Program. Volunteers and student interns are required to document their hours each month on the SEVAP's Volunteer Timesheet.

IMPLEMENTATION: Funding received through the OES Special Emphasis Grant allows the LA Victim Assistance Program to continue to enhance its existing services. Funds pay for the

salaries of two full time victim advocates and basic operational expenses such as office supplies, travel and an emergency fund. The staff is assigned to the Central Victim Assistance Program Office located at 222 South Hill Street, Suite 600, Los Angeles, CA 90012 for at least 50% of the time and the other 50% in a field office located at the LAPD - Korea town Substation located at 3330 W. 8th Street, Los Angeles, CA 90026, which is easily accessible to members of the Korean Community. Space for the project's field office continues to be donated by a prominent Korean Community Business Woman, Ms. Judy Park. The qualifications of the two grant positions include the ability to speak, write and communicate fluently in the Korean language; the ability to provide program presentations; knowledge of the Criminal Justice System and familiarity with the Korean culture. Each project staff has met the minimum Standard Entry Level Victim Advocate qualifications pursuant to California Penal Code §13835.10. Both advocates have completed the mandatory entry and advanced level advocate training. Each staff member has completed and passed the background check through the Department of Motor Vehicles and the Department of Justice. The responsibilities of the SEVAP victim advocates is to provide mandated direct services to victims of crime in the Korean Community of Los Angeles as outlined in the projects objectives. The project maintains active Letters of Agreement with the Los Angeles Police Department and several community service agencies that establishes a formal system of networking and coordinating services to victims in the Korean Community of Los Angeles. These agencies are as follows: Center for the Pacific Asian Family, Asian Pacific Women's Center, Korean Resource Center, Little Tokyo Service Center, CDC, Legal Aid Foundation of Los Angeles, Korean American Family Service Center. The above agencies provide social services to victims of crime including victims of sexual assault, domestic violence and crimes against children.

PROJECT CONTACT INFORMATION

Applicant Office of the LA City Attorney Grant Number _____
[FOR OES USE ONLY]

Provide the name, title, address, telephone number, and e-mail address for the project contacts named below. If a section does not apply to your project, enter "N/A." NOTE: If you use a PO Box address, a street address is also required for package delivery and site visit purposes.

1. The **Project Director** for the project:

Name: Derek Tennell Address: 201 N. Los Angeles St.#301
Title: Program Director City: Los Angeles Zip: 90012
Telephone #: (213) 978-2097 Fax #: (213) 978-2179
(Area Code) (Area code)
E-Mail Address: Derek.Tennell@lacity.org

2. The **Financial Officer** for the project:

Name: Jennifer Krieger Roth Address: 200 N. Main St., Suite 800
Title: Financial Officer City: Los Angeles Zip: 90012
Telephone #: (213) 978-8366 Fax #: (213) 978-8313
(Area Code) (Area code)
E-Mail Address: Jennifer.Krieger@lacity.org

3. The **person** having **routine programmatic responsibility** for the project:

Name: Kathy Colobong Address: 201 N. Los Angeles St. # 301
Title: Assistant Director City: Los Angeles Zip: 90012
Telephone #: (213) 978-2167 Fax #: (213) 978-2109
(Area Code) (Area code)
E-Mail Address: Kathy.Colobong@lacity.org

4. The **person** having **routine fiscal responsibility** for the project:

Name: Michiko Manacop Reyes Address: 200 N. Main St., Suite 800
Title: Budget Director City: Los Angeles Zip: 90012
Telephone #: (213) 978-7020 Fax #: (213) 978-8316
(Area Code) (Area code)
E-Mail Address: Michiko.Reyes@lacity.org

5. The **Executive Director** of a nonprofit organization or the **Chief Executive Officer** (e.g., chief of police, superintendent of schools) of the implementing agency:

Name: Derek Tennell Address: 201 N. Los Angeles St. # 301
Title: Program Director City: Los Angeles Zip: 90012
Telephone #: (213) 978-2097 Fax #: (213) 978-2179
(Area Code) (Area code)
E-Mail Address: Derek.Tennell@lacity.org

6. The **Chair** of the **governing body** of the implementing agency: (Provide contact information other than that of the implementing agency)

Name: Rockard J. Delgadillo Address: 200 N. Main St., Suite 800
Title: City Attorney City: Los Angeles Zip: 90012
Telephone #: (213) 978-8100 Fax #: (213) 978-8312
(Area Code) (Area code)
E-Mail Address: Rockard.Delgadillo@lacity.org

PROJECT SUMMARY

1. GRANT AWARD NO.

2. PROJECT TITLE

Special Emphasis Victim Assistance Program (SEVAP)

3. GRANT PERIOD

7/1/08 to 6/30/09

4. APPLICANT

Name: Rockard J. Delgadillo Phone: (213) 978-8100

Address: 200 N. Main St., #800 Fax #: (213) 978-8312

City: Los Angeles, CA Zip: 90012

5. GRANT AMOUNT

(this is the same amount as 10G of the Grant Award Face Sheet)

\$ 110,000

6. IMPLEMENTING AGENCY

Name: Office of the Los Angeles City Attorney Victim Assistance Prog. Phone: (213) 978-2097 Fax #: (213) 978-2179

Address: 201 N. Los Angeles St.,
Mall Space 301 City: Los Angeles Zip: 90012

7. PROGRAM DESCRIPTION

The Office of the Los Angeles City Attorney Special Emphasis Victim Assistance Program (SEVAP) focuses on the needs of victims of robbery/assault, drunk driving, hit & run, domestic violence, sexual assault, child and elder abuse, hate crime as well as survivors of homicide victims in the underserved Korean-American minority community of Los Angeles. Funds pay for the salaries of two full-time victim advocates and operating expenses (victim emergency fund, travel and office supplies). The staff is assigned to the program's central office for 50% of the time and the other 50% is spent in the field. The program utilizes community and professional volunteers to assist the staff in providing support services. The staff meets the minimum standard entry-level victim advocate qualifications, has completed the required state curriculum training for entry & advanced level victim advocates and is bilingual & bi-cultural.

8. PROBLEM STATEMENT

The City of Los Angeles covers a geographic service area of 468 square miles with a population of 4 million. Statistics indicate that among the Asian Pacific Immigrant (API) groups, the Korean-American Community makes up 33% of the total API population. Currently, Los Angeles has the largest Korean population outside of Korea. The Korean-American community shows the highest percentage of persons with difficulty in English as compared with other Asians. During 2006, Los Angeles Police Dpt. (LAPD) reported 14,235 robberies, 14,118 aggravated assaults and 481 homicides. Approximately 13% of the violent (Part I) crimes reported to LAPD have occurred in the divisions which predominantly serve the City's Korean-American Community. Korean-American residents, business groups, community leaders, organizations and/or agencies recognize that these statistics are a major problem and concern for the community. However, the Special Emphasis Victim Assistance Program of the Office of the LA City Attorney is the only existing program to meet the specific needs of the community. The SEVAP is able to provide comprehensive services specifically for victims of crime and bridges any existing gap between the community & the government.

9. OBJECTIVES

The project enhances the provision of services to the Korean community. The project staff assists victims of robbery/assault, drunk driving, hit & run, domestic violence, sexual assault, child & elder abuse, hate crime and survivors of homicide victims in the Korean-American Community to recover from the psychological, emotional and out-of-pocket financial losses incurred due to the injuries suffered as a direct result of the crime. The staff also allows the victims of crime to actively participate in the Criminal Justice System. The project accomplishes this objective through the delivery of services as outlined in the Activities Section. The project funds the salaries of two full time victim service coordinators who provide services to approximately 1,000 new victims of crime.

10. ACTIVITIES

The project staff assists victims by providing direct comprehensive services. These services include immediate response (crisis intervention counseling, emergency services for food, etc.), dynamics of victimization services (referral for psychotherapy counseling, follow-up counseling), criminal justice support (court support, criminal case status, court restitution information, victim impact statements), information and referral (resource & referral to community/governmental agencies, property return, assist in filing for the State Victims of Crime Compensation Application), outreach services (program presentations, brochure distribution), volunteer recruitment & training.

11. EVALUATION (if applicable)**12. NUMBER OF CLIENTS**

(if applicable)

1,000**13. PROJECT BUDGET**

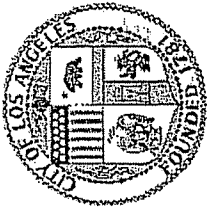
(these are the same amounts as on Budget Pages)

	Personal Services	Operating Expenses	Equipment	TOTAL
	105,850	4,150		110,000
Totals:	105,850	4,150		110,000

Operational Agreements (OA) Summary Form

	List of Agencies/Organizations/Individuals	Date OA Signed (xx/xx/xxxx)	Dates of OA	
			From:	To:
1.	Los Angeles Police Department	4/14/08	7/1/08	to 6/30/09
2.	Center for the Pacific Asian Family	4-14-08	7/1/08	to 6/30/09
3.	Asian Pacific Women's Center	4/14/08	7/1/08	to 6/30/09
4.	Korean Resource Center	4/14/08	7/1/08	to 6/30/09
5.	Little Tokyo Service Center, CDC	4/14/08	7/1/08	to 6/30/09
6.	Legal Aid Foundation of Los Angeles	4/14/08	7/1/08	to 6/30/09
7.	Korean American Family Service Center	4/14/08	7/1/08	to 6/30/09
8.				to
9.				to
10.				to
11.				to
12.				to
13.				to
14.				to
15.				to
16.				to
17.				to
18.				to
19.				to
20.				to

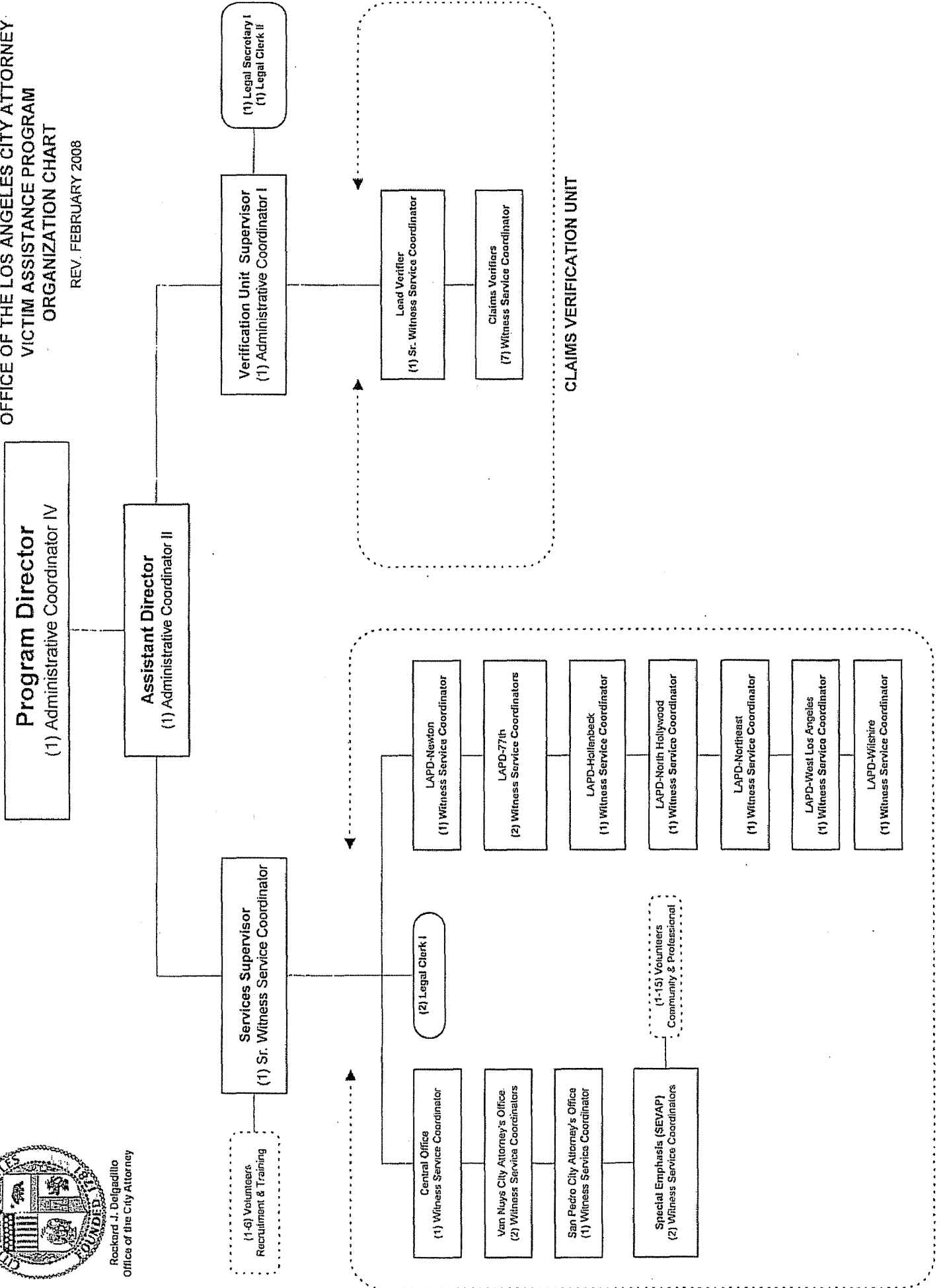
Use additional pages if necessary.



Rockard J. Deigadillo
Office of the City Attorney

OFFICE OF THE LOS ANGELES CITY ATTORNEY
VICTIM ASSISTANCE PROGRAM
ORGANIZATION CHART

REV. FEBRUARY 2008



Direct Services

PROJECT SERVICE AREA INFORMATION

- 1. COUNTY OR COUNTIES SERVED: Enter the name(s) of the county or counties served by the project. Put an asterisk where the project's principal office is located. 4 Lines Max

City of Los Angeles

- 2. U.S. CONGRESSIONAL DISTRICT(S) : Enter the number(s) of the U.S. Congressional District(s) which the project serves. Put an asterisk for the district where the project's principal office is located. 4 Lines Max

23, 25, 26

- 3. STATE ASSEMBLY DISTRICT(S) : Enter the number(s) of the State Assembly District(s) which the project serves. Put an asterisk for the district where the project's principal office is located. 4 Lines Max

37, 38, 39, 40, 41, 43, 44, 47, 48, 49, 50, 51, 52, 53, 54, 55, 56, 57, 58, 60, 62, 63, 71

- 4. STATE SENATE DISTRICT(S) : Enter the number(s) of the State Senate District(s) that the project serves. Put an asterisk for the district where the project's principal office is located. 4 Lines Max

19, 20, 21, 22, 23, 24, 25, 26, 27, 28, 29, 30, 31

- 5. POPULATION OF SERVICE AREA : Enter the total population of the area served by the project. 4 Lines Max

4 million (per 2006 Census estimate)