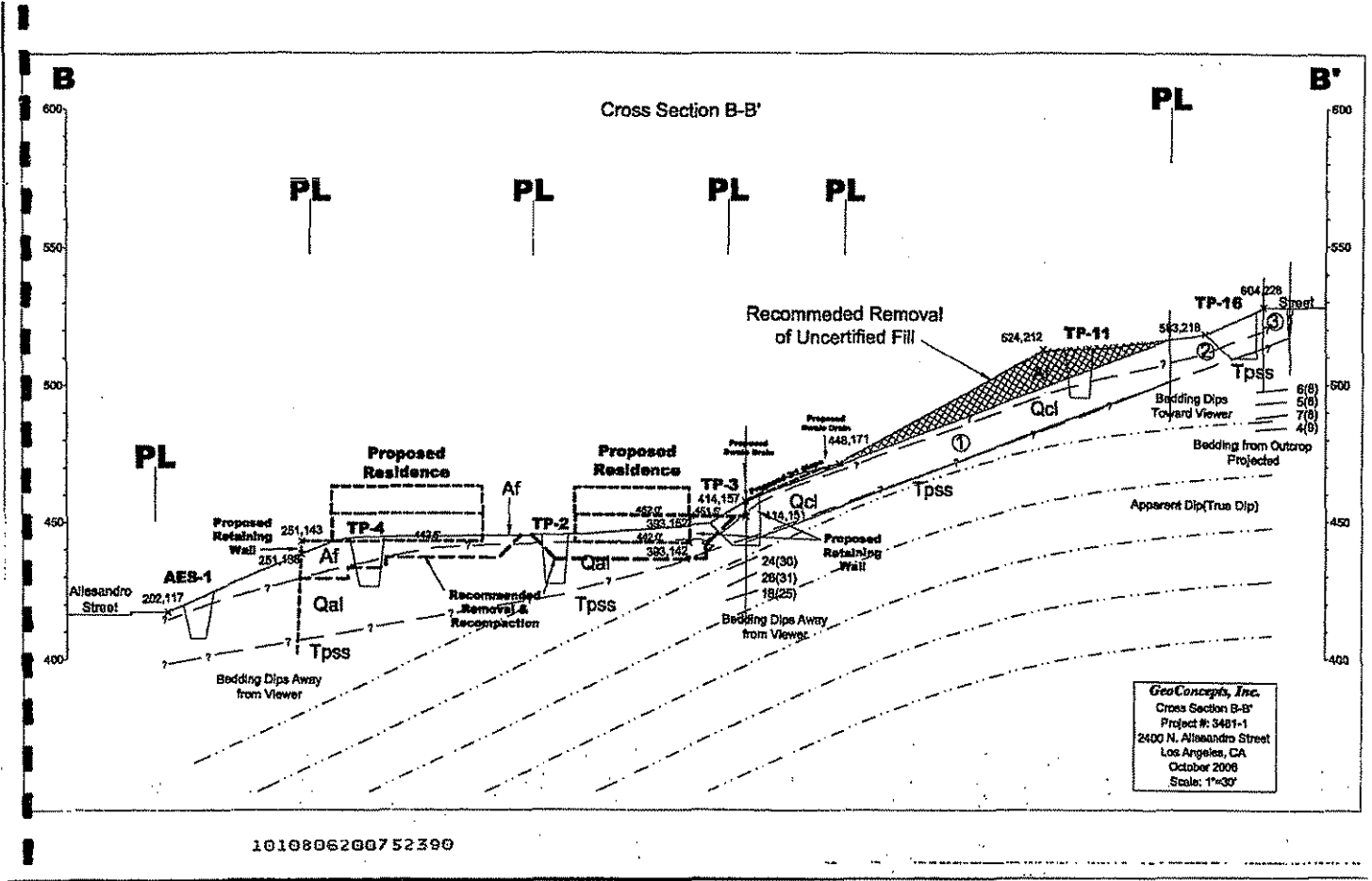


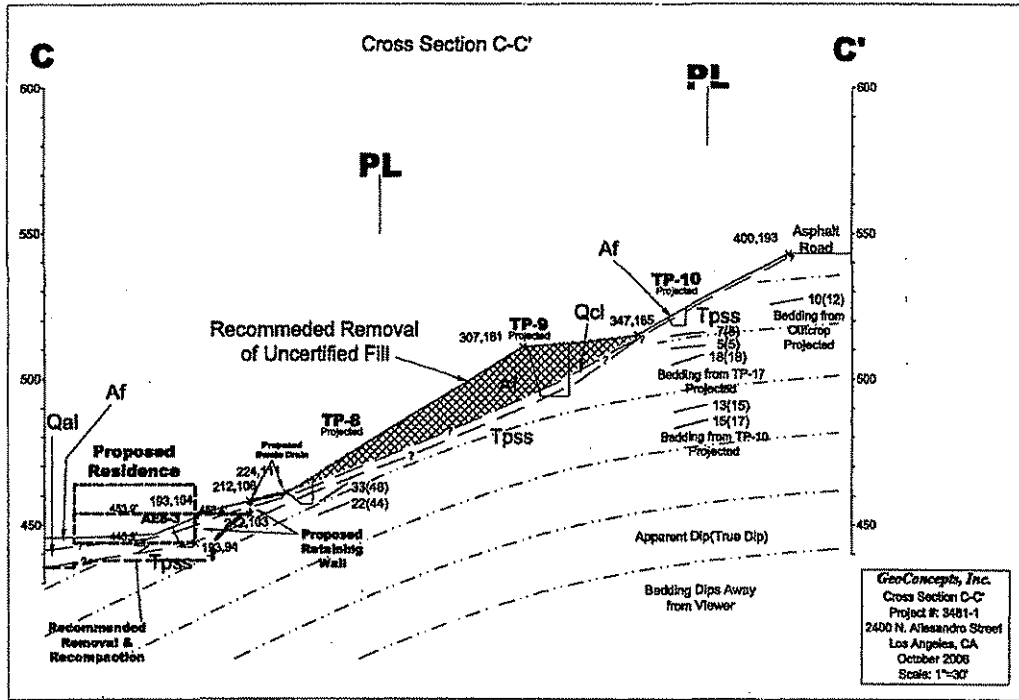
EDWARDSON, ORTIZ, PARIS, APPEAL: CF 09-0082 2/3/09
 APC# 2006-8787-ZC, VTT62900-SL-2A

PAGE 3 OF 11



EDWARDSON, ORTIZ, PARISI Appeal CF 09-0082 2/3/09
 APCE 2006-8787-2C, VTT 62900-SL-2A, 2400 ALESSANDRO

PAGE 4 OF 11



1010806200752390

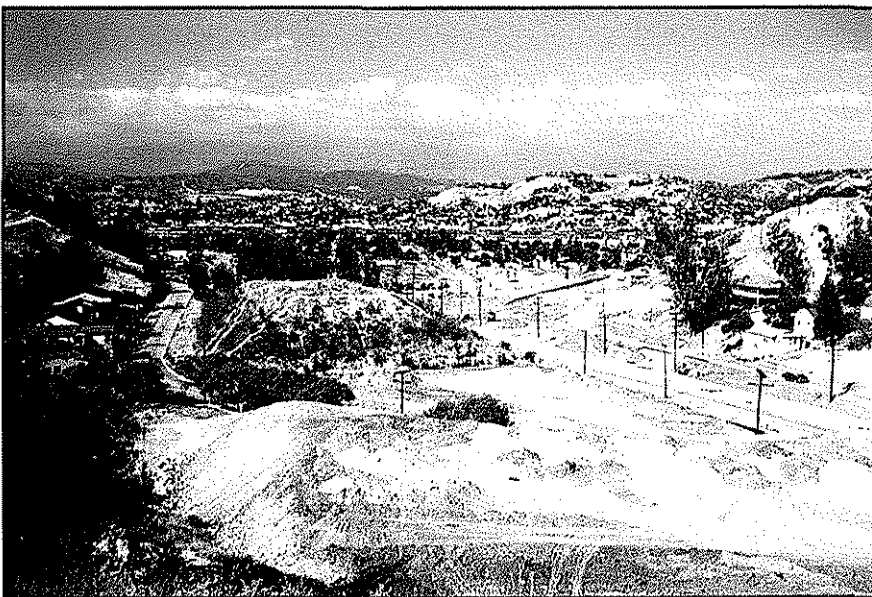
EDWARDSON, ORTIZ, PARISI APPEAL
 APCB 2006-8787-2C, VTTG2900-2A, 2400 ALESSANDRO

CF09-0082

2/3/09

PAGE 5 of 11

Fill dirt dumped during freeway construction on 2400 Allesandro

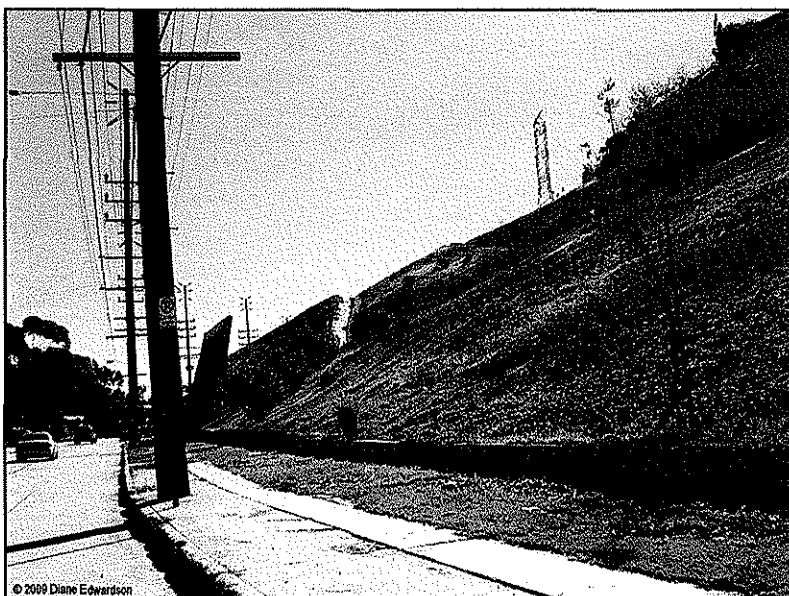
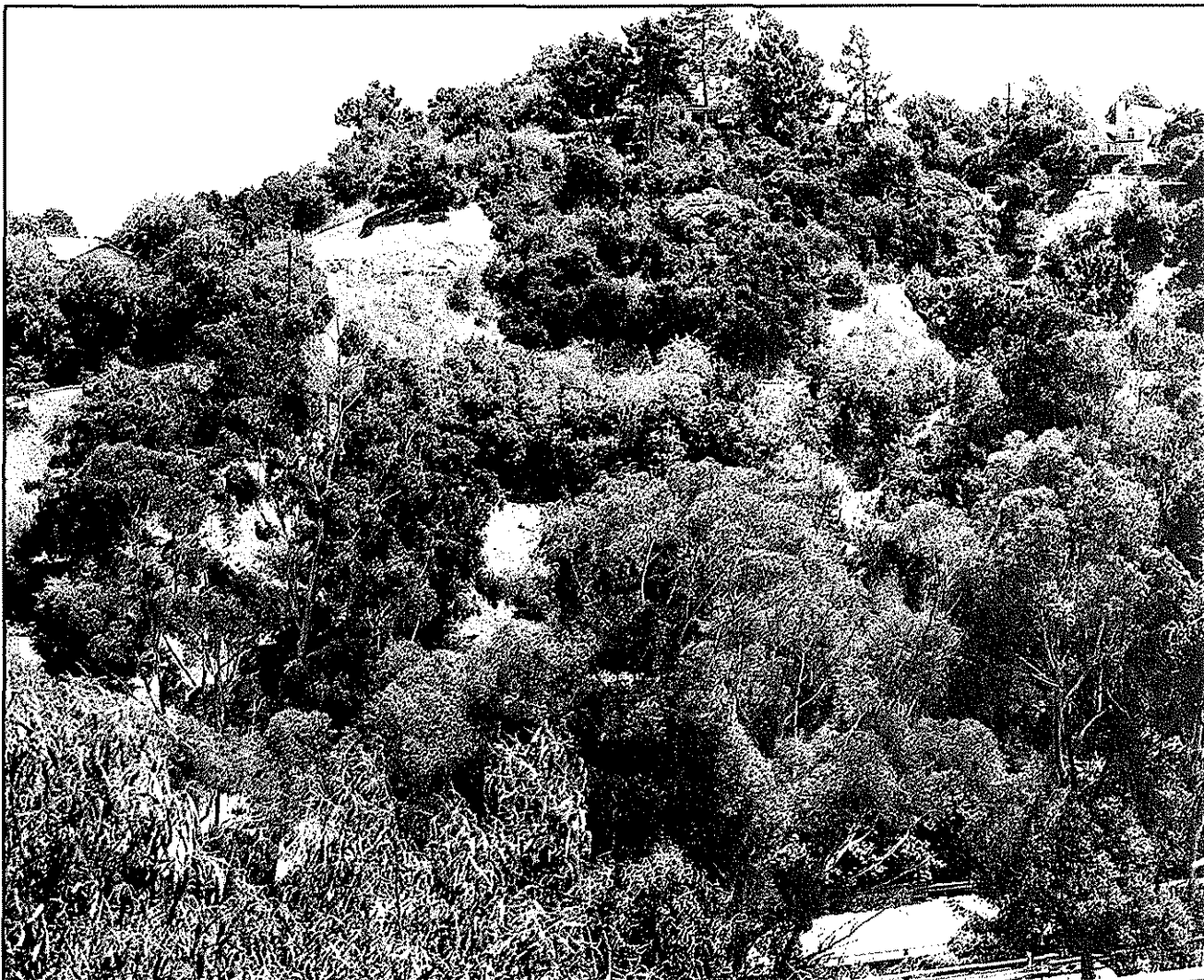


Above: Detail of Semi Tropic Tract from photo at left. Red circle indicates earth dumped during freeway construction at 2400 Allesandro.

Left: Futterer, Holyland Exhibition, Los Angeles. Grading for the 2 Freeway shot from Lake View Ave, facing Corralitas Drive (on left) and Semi-Tropic Tract (on right) 1960.

CF 09-0082
 APCE-2006-8787-ZC
 VTT62900-SL-2A
 ENV-2005-9337-MND
 2400 Allesandro

Semi Tropic Spiritualists' Tract: Community is Characterized by Open Space



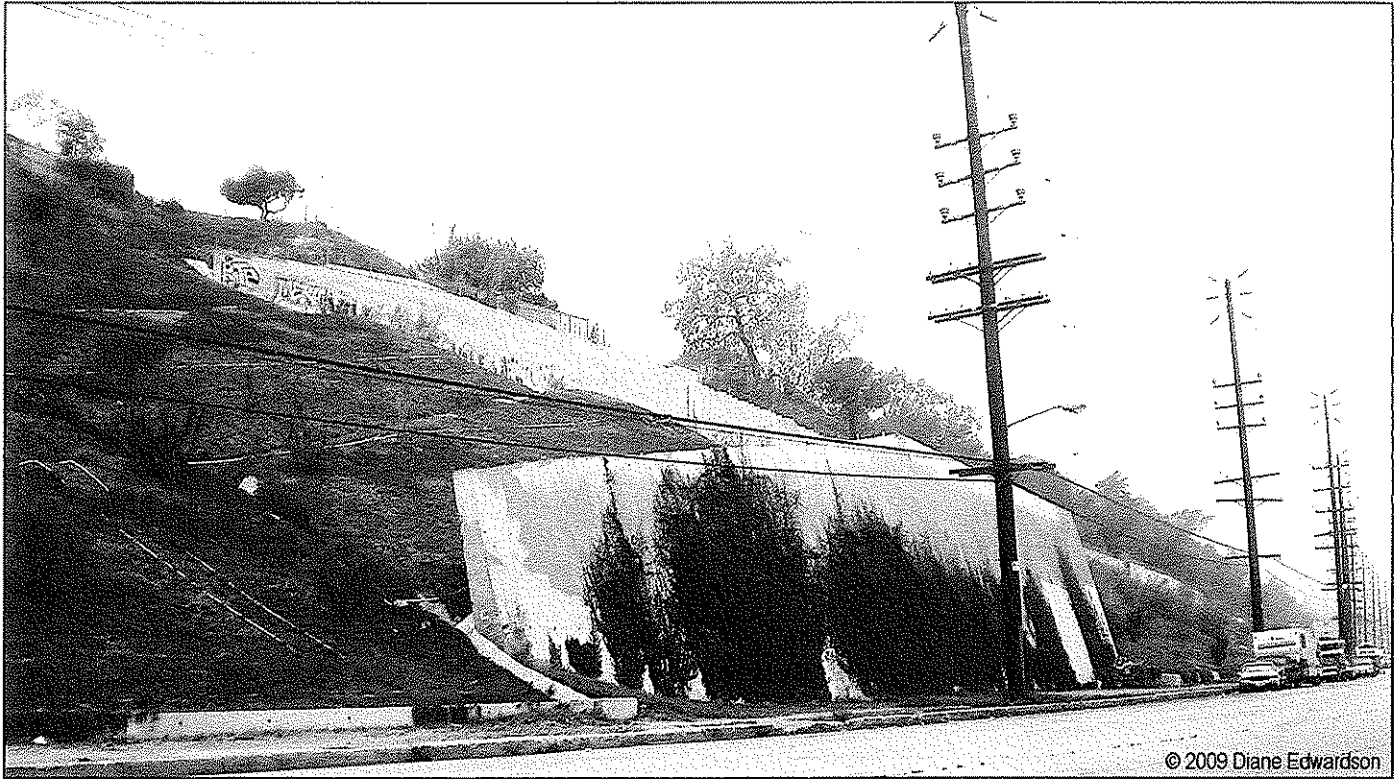
Photos: Edwardson.

Above: Semi Tropic Spiritualists' Tract from Corralitas Drive, top of Corralitas Staircase. More than 60 trees will be removed to build the 16-lot subdivision.

Left: Little grows except ground cover, even after 6 years, on the landscaped and maintained, 2:1 Compacted slope of the Menlo Property, Riverside Drive north of Fletcher. This is not a fair trade for the loss of native & significant trees in the proposed plan.

**CF 09-0082
VTT62900-SL-2A
APCE-2006-8787-ZC
ENV-2005-9337-MND
2400 Allesandro**

**Example of 2:1 Compacted Slope, Retaining Walls, Landscaping: Menlo Property
Riverside Drive just north of Fletcher**

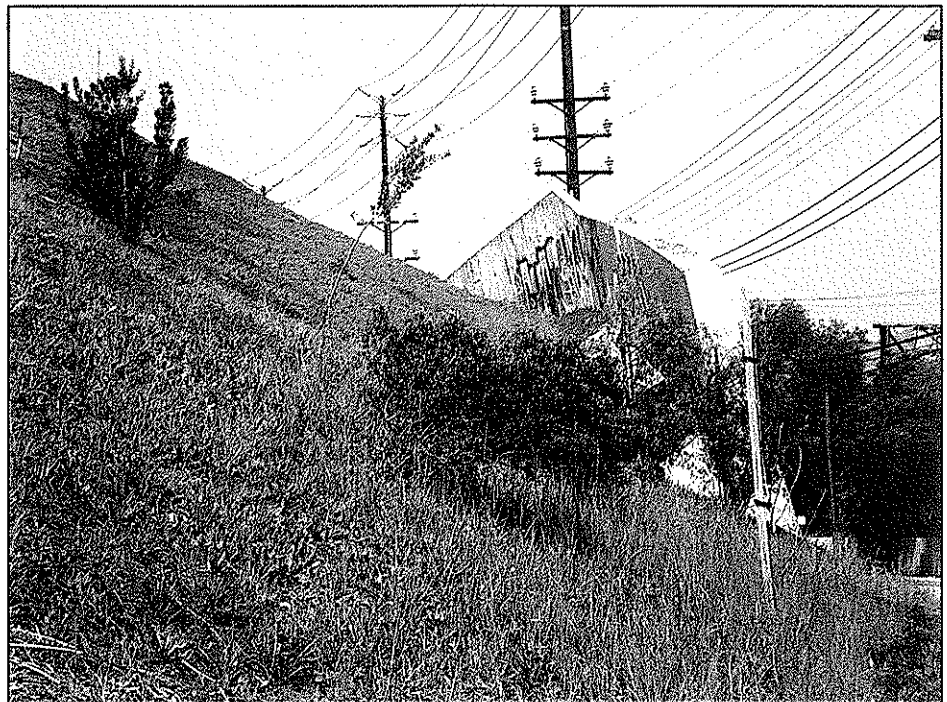


2/3/09 CF 09-0082

Photos: Edwardson. **The Menlo Property is an example to a landscaped and maintained 2:1 compacted slope. Six years after landscaping, and regularly maintained, little grows except groundcover.** Very few trees planted are clinging to life, but most died within the first year.

The retaining walls are a constant eyesore as graffiti vandals routinely attack every available surface.

In the agreement with the City Attorney for this property, **the retaining walls (above) were supposed to be planted with vining plants. Six years later, nothing grows on the walls that are even visible from Atwater.**



**USDA Forest Service
Urban Forest Effects Model
Pollution Estimator**

Using: Air Pollution Removal Calculator developed by
Northeastern Research Station, Syracuse NY

February 3, 2009

When applied to the 3-acre parcel in the Semi Tropic Spiritualists' Tract, 2400 Allesandro, the trees on the 3-acre site remove 70.1 kilograms of pollutants per year from the air (of the 5 pollutants measured).

Pollutant:	CO	NO ₂	O ₃	PM10	SO ₂	Total
Kilograms Removed Annually	3.8	19.2	20.9	24.9	1.7	70.1

Pollutants measured:

CO – Carbon monoxide

NO₂ – Nitrogen dioxide

O₃ – Ozone

PM10 - Particulate matter up to 10 microns in diameter (mostly from diesel engines)

SO₂ – Sulphur dioxide

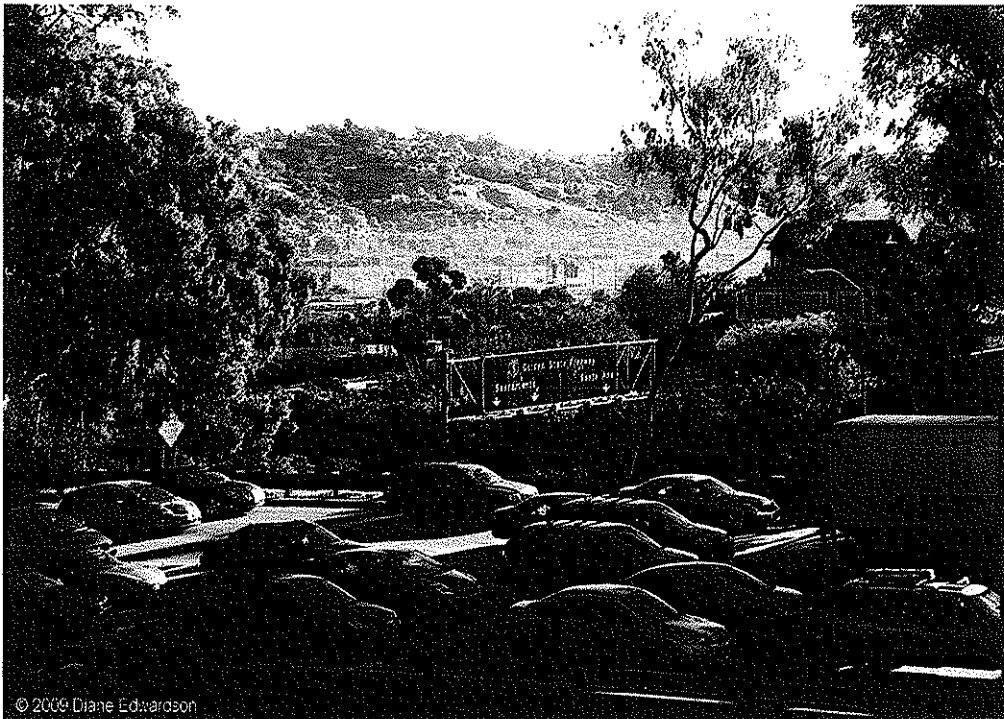


Photo: Edwardson, January 12, 2009, 9AM. On clear mornings, you can see the inversion layer (haze of pollutants) forming over the adjacent 5 Freeway, Elysian Valley and Taylor Yard. The 2 Freeway is typically, at a standstill in the foreground. The homes on the slope directly across the 2 Freeway are on Rosebud Ave, in the Semi Tropic Spiritualists' Tract.

Semi-Tropic Tract, Big Trees

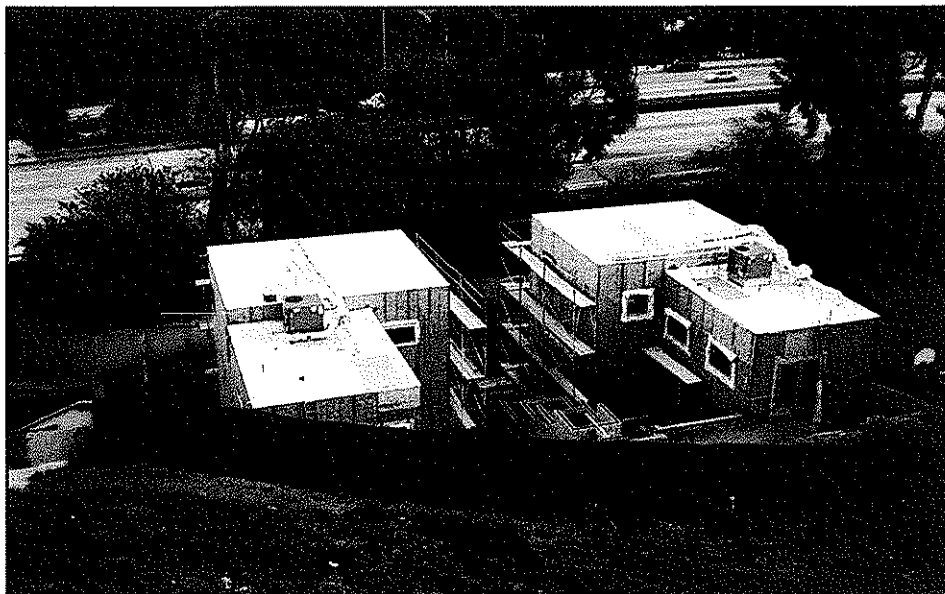
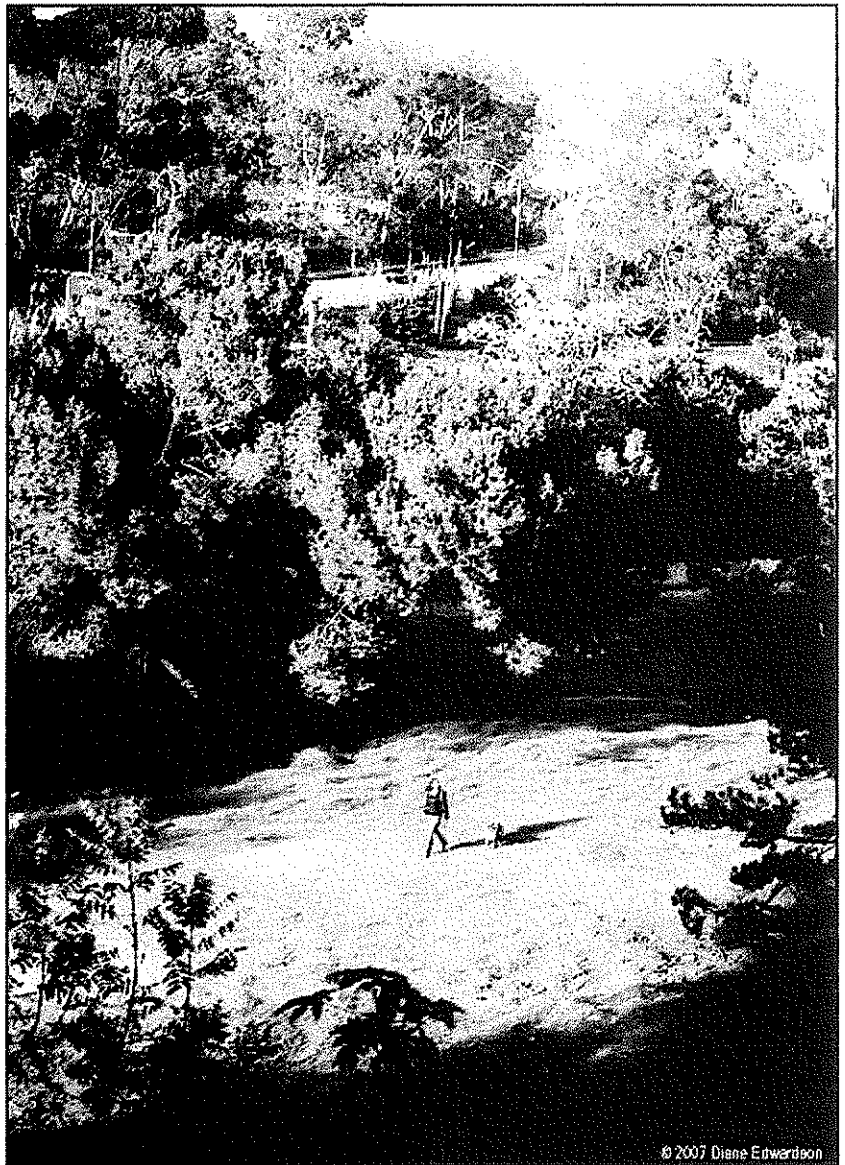
Photo: Edwardson.

The 38" diameter pine tree takes up most of this photo. A 1:1 tree replacement ratio is insufficient for the benefits this tree brings to filtering air and water.

Photo shot from El Moran and Alvarado, the 2 Freeway is in the background.

For scale, the woman in the photo is 6' tall.

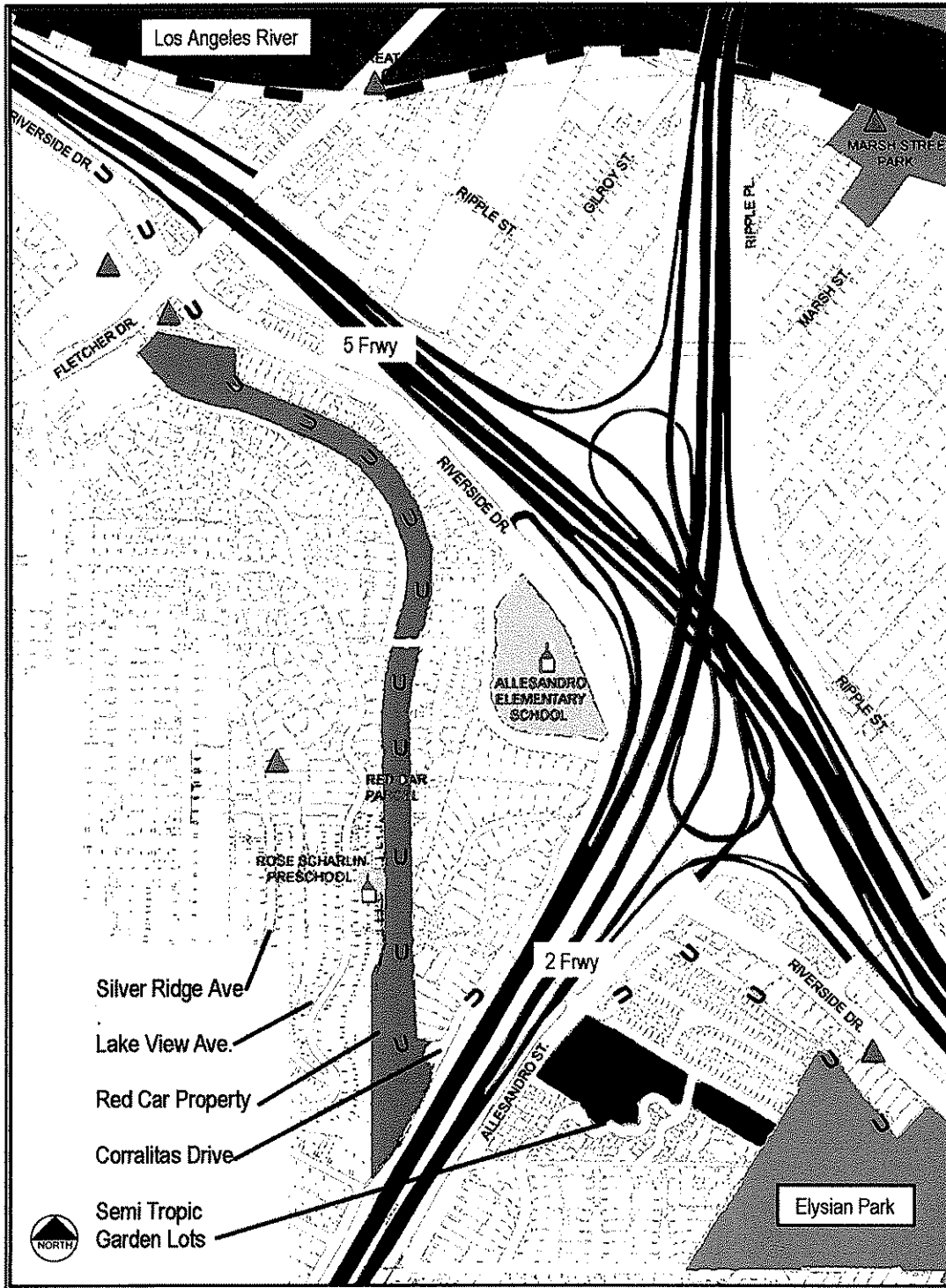
The big trees are necessary for combating effects of pollutants caused by the adjacent 2 & 5 Freeways. Both photos show how close Corralitas Drive and the Semi Tropic Spiritualists' Tract are to the freeways.



Left: Edwardson, Oct 2007. 2463 & 2467 Corralitas Drive unshielded rooftop equipment and ducting are typical of new construction in the area. 2 Frwy in background.

**CF 09-0082
VTT62900-SL
APCE-2006-8787-ZC
ENV-2005-9337-MND
2400 Allesandro**

Map Connect the Parks Connecting Communities, 2003.



Map: Connect the Parks Connecting Communities, 2003. As a part of the Rim of the Valley Trail Corridor, access through the site via the driveway to Alessandro is necessary for trail connectivity to the Corralitas Red Car Property via Rosebud Ave.

CF 09-0082, VTT62900-SL, APCE-2006-8787-ZC, ENV-2005-9337-MND, 2400 Alessandro, 2/3/09