

Key Revenue Trends

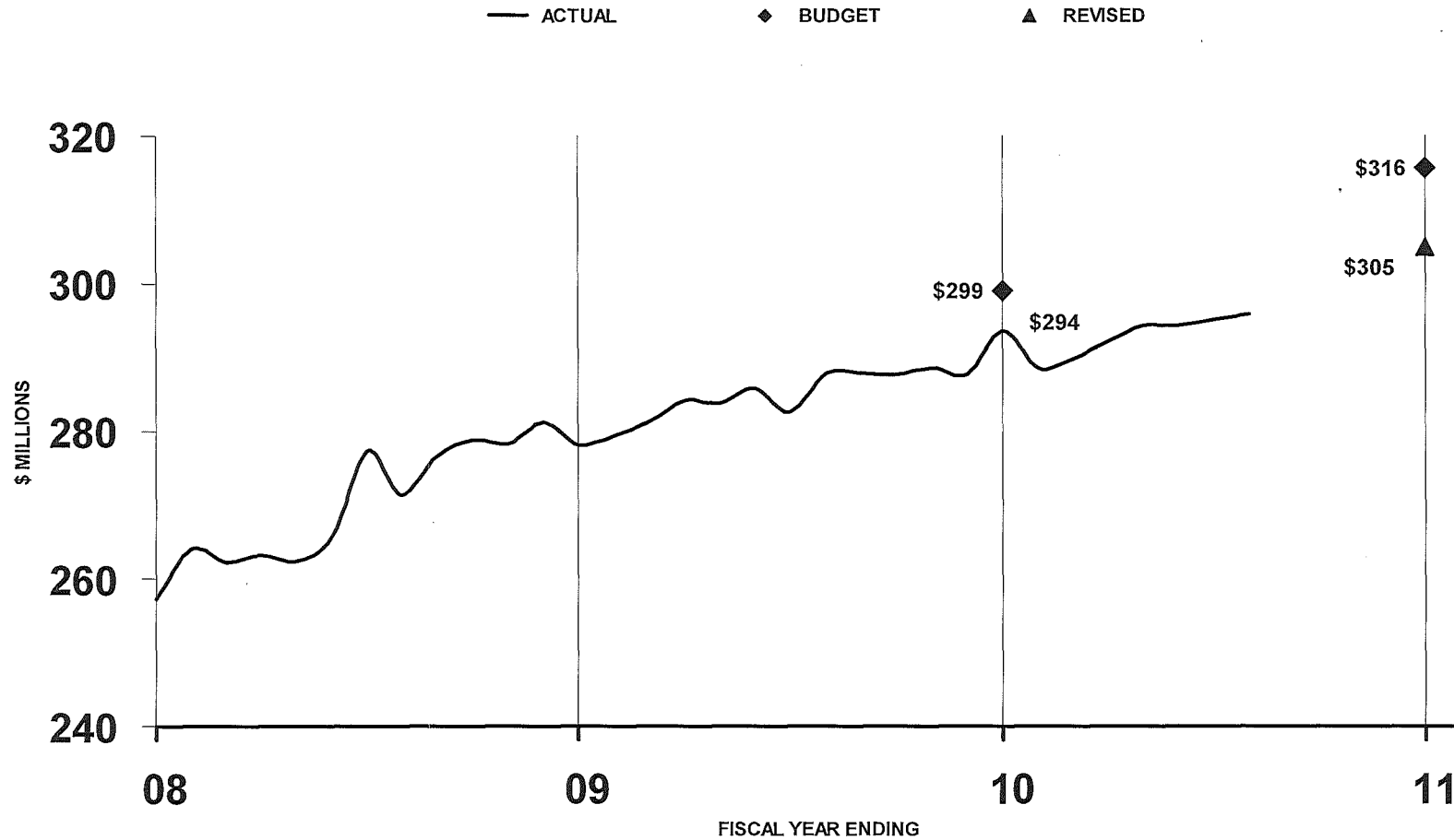
FISCAL YEAR 2010-11

Miguel Santana
City Administrative Officer



Trend: Electric Users' Tax Down

ELECTRIC USERS' TAX

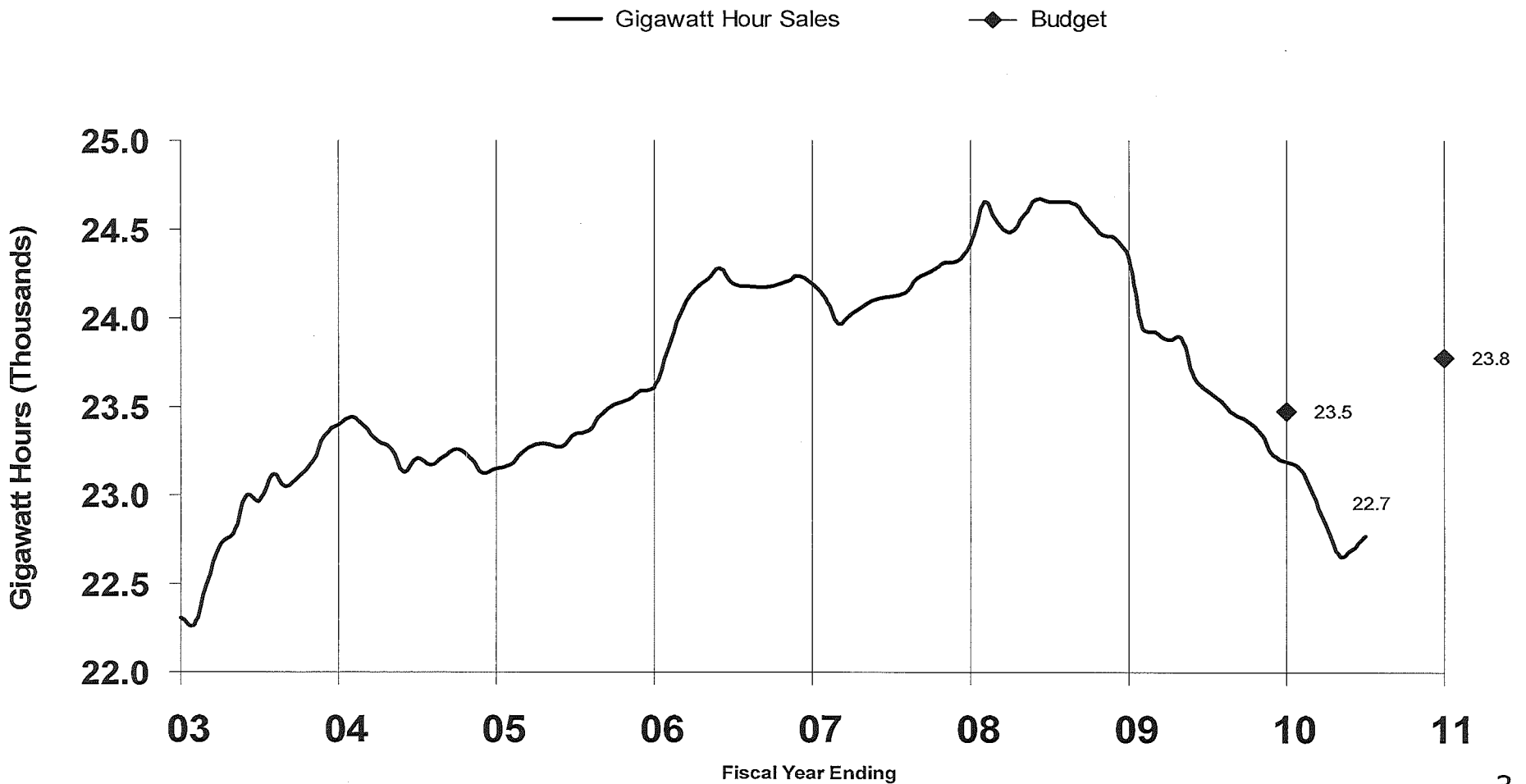


12 month moving sum



Trend: Electric Users' Tax Down

Consumption in Gigawatt Hours

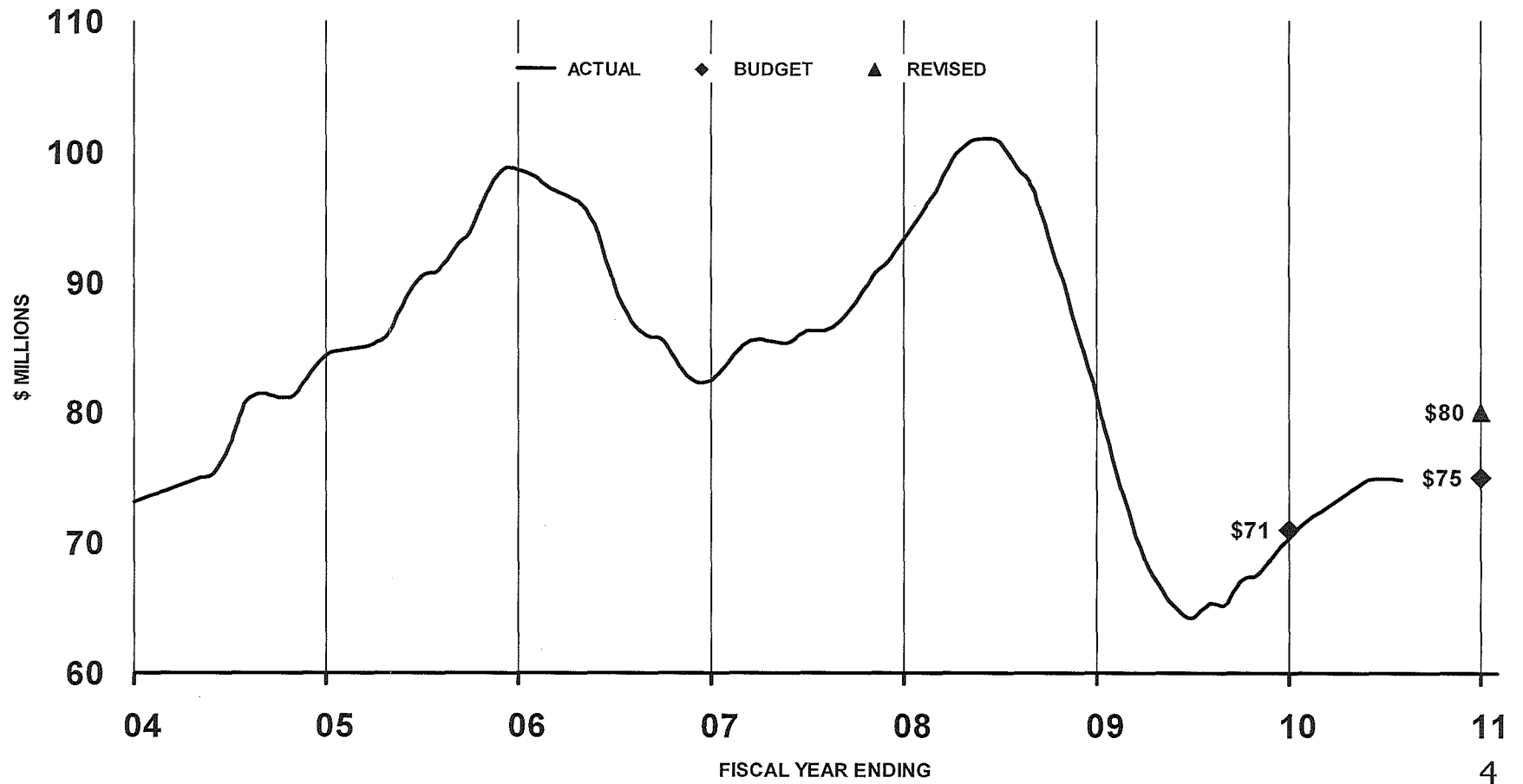


12-month moving sum



Trend: Cool Winter + Prices Rising = Gas Users' Tax Up

GAS USERS' TAX

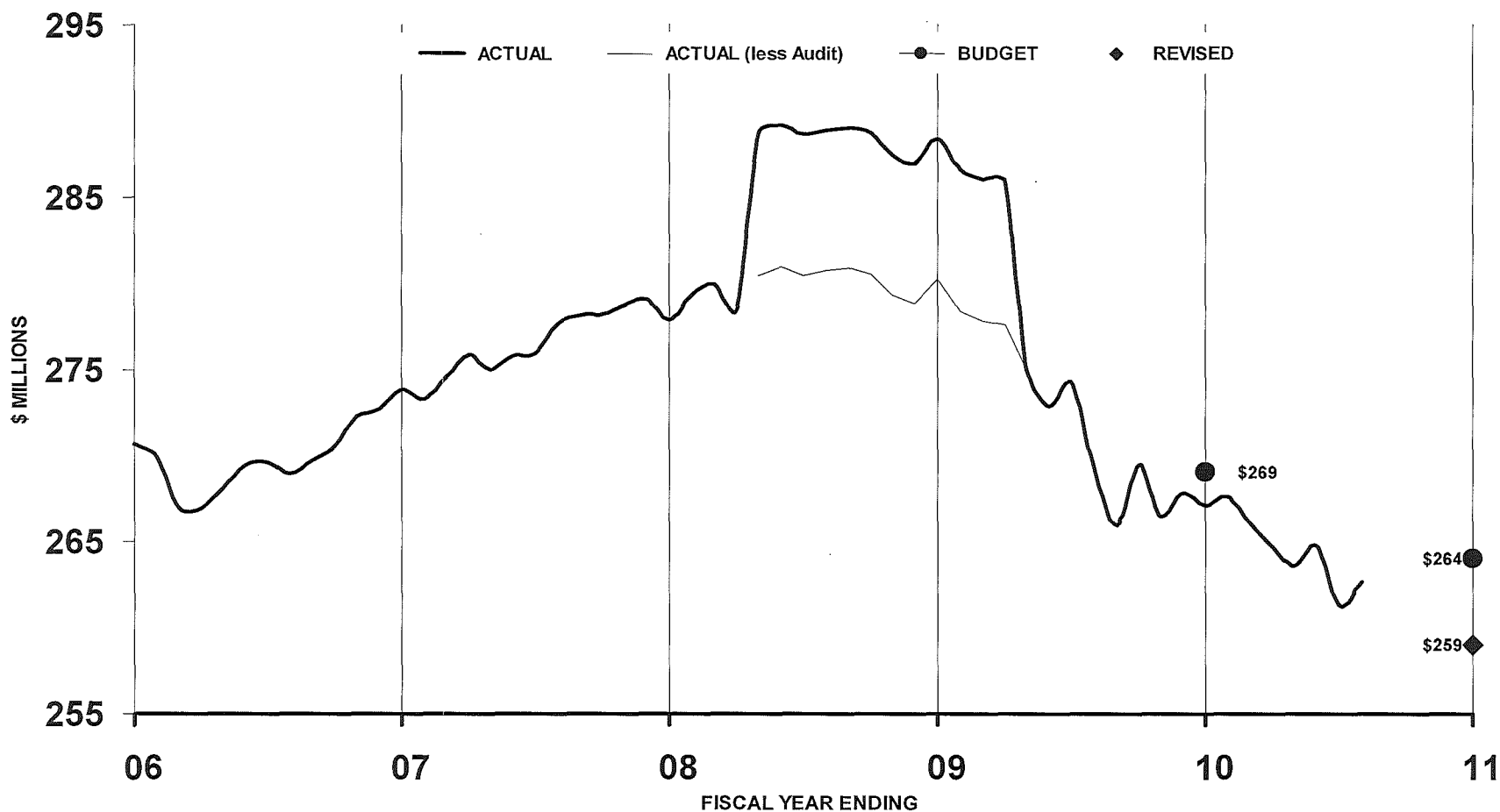


12-month moving sum



Trend: Telephone Users' Tax Down

TELEPHONE USERS' TAX

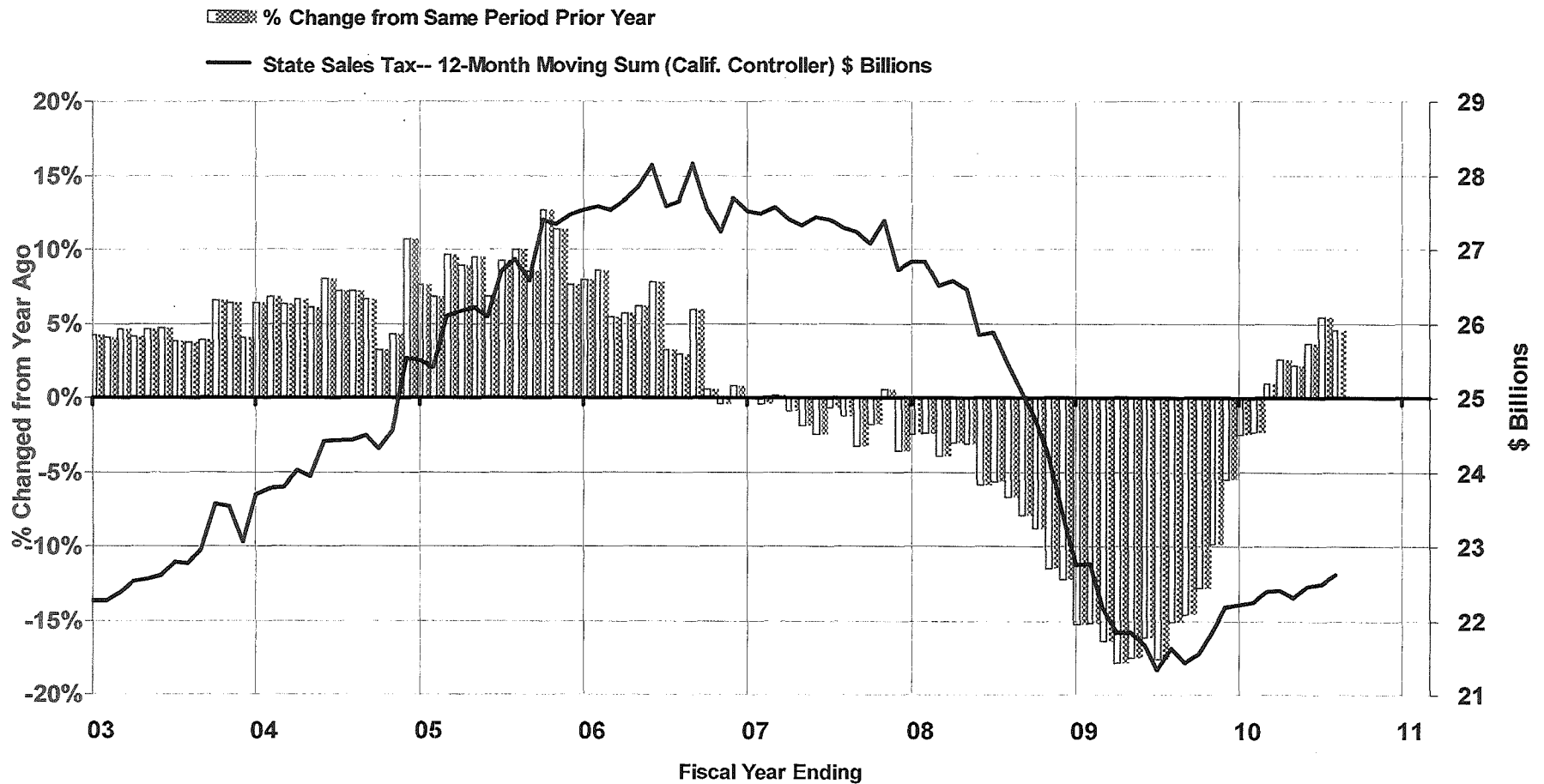


12-month moving sum



Trend: State Sales Tax Receipts Up, Waiting for City Holiday Numbers in March

California Sales Tax -- Annual

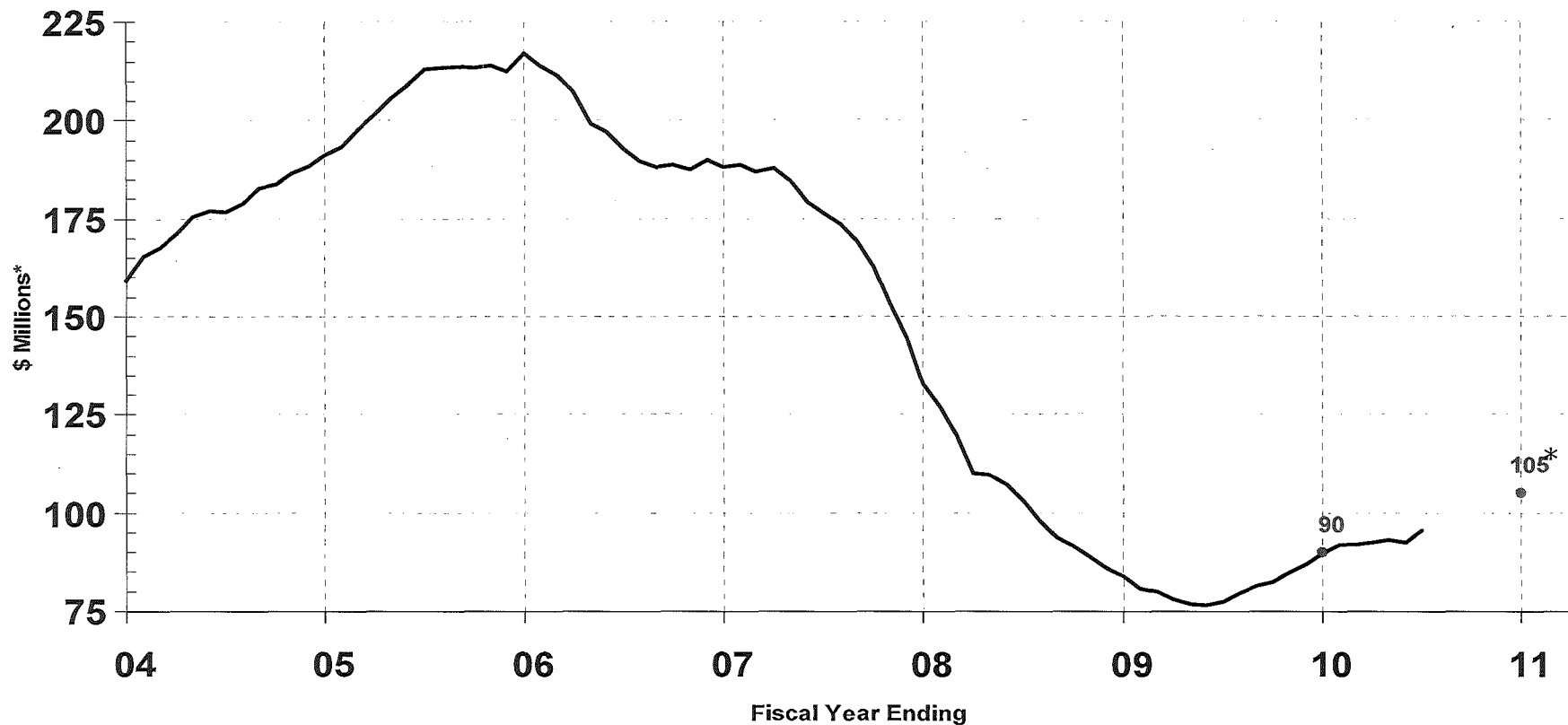


12-month moving sum; adjusted to normalize tax rate change



Trend: Documentary Transfer Tax is Slower than Budget

Documentary Transfer Tax



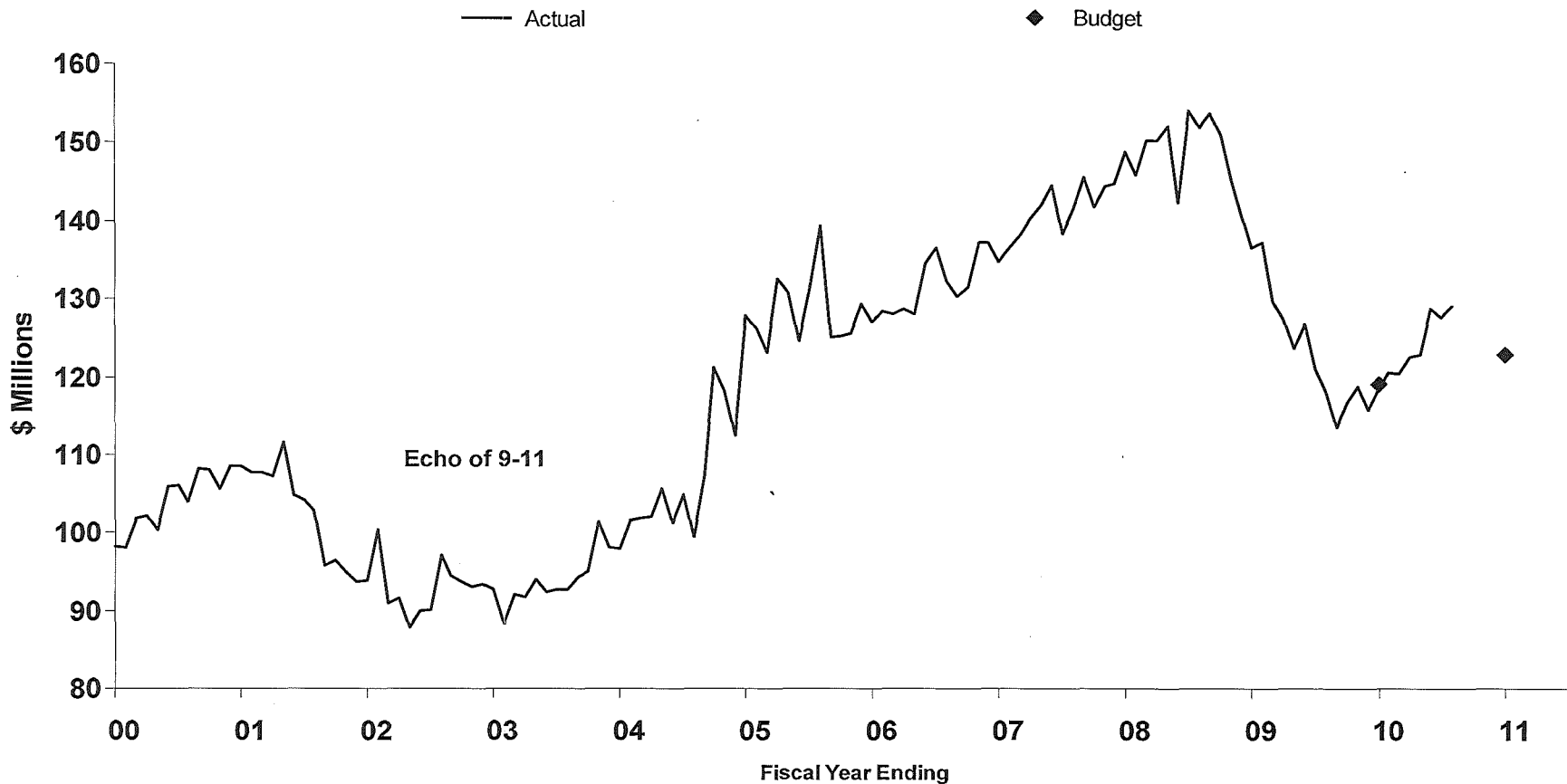
12-month moving sum

* This chart does not include \$6 million for Real Property Transfer Tax - Corporate



Trend: Transient Occupancy Tax Up

City Hotel Tax Receipts

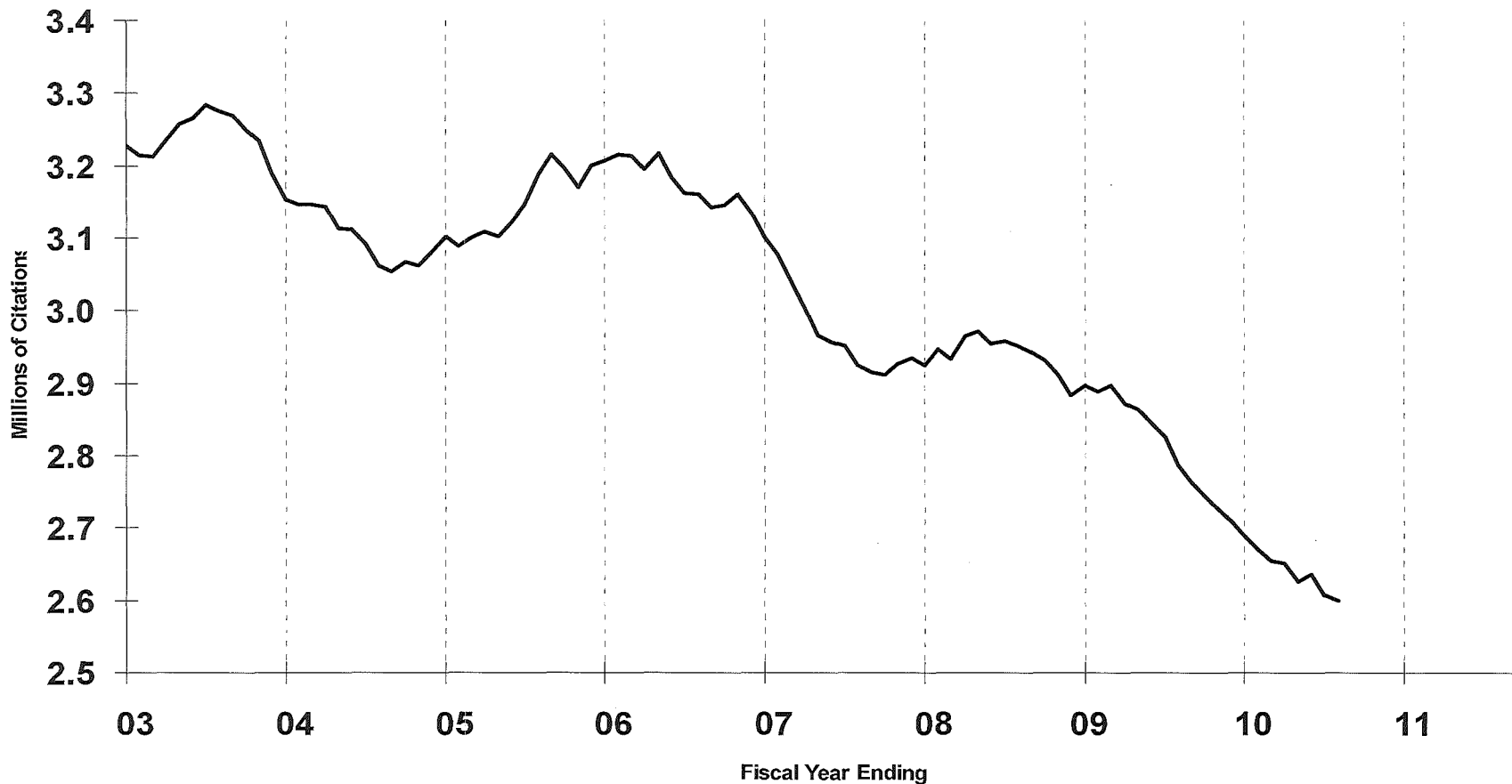


12-month moving sum



Trend: Parking Citations Down

Parking Citations Issued



12-month moving sum



Trend: Net of Department Receipts Lower than Budget (Not including P3 Revenue)

Department Receipts	Millions	Description
Fire	(8.0)	Net of various fees including ambulance billing
Planning	(2.1)	Delay in fee increases
City Attorney	(4.8)	Lower reimbursements from proprietary departments
General Services	(2.0)	Lower reimbursements from proprietary departments
Community Development	(3.9)	Lower CAP Rates
Housing	(2.0)	Lower CAP Rates
Sanitation	(2.8)	Lower CAP Rates
Street Services	1.0	Carry-over revenues from 2009-10
Other Departments	3.8	Revised projections
Total	(20.8)	