



John White <john.white@lacity.org>

## Parking Crisis on Beverly Glen Blvd. - please amend the codes to accommodate today

1 message

Christine Luethje <lOOchie@mac.com>

Wed, Jul 27, 2011 at 11:02 AM

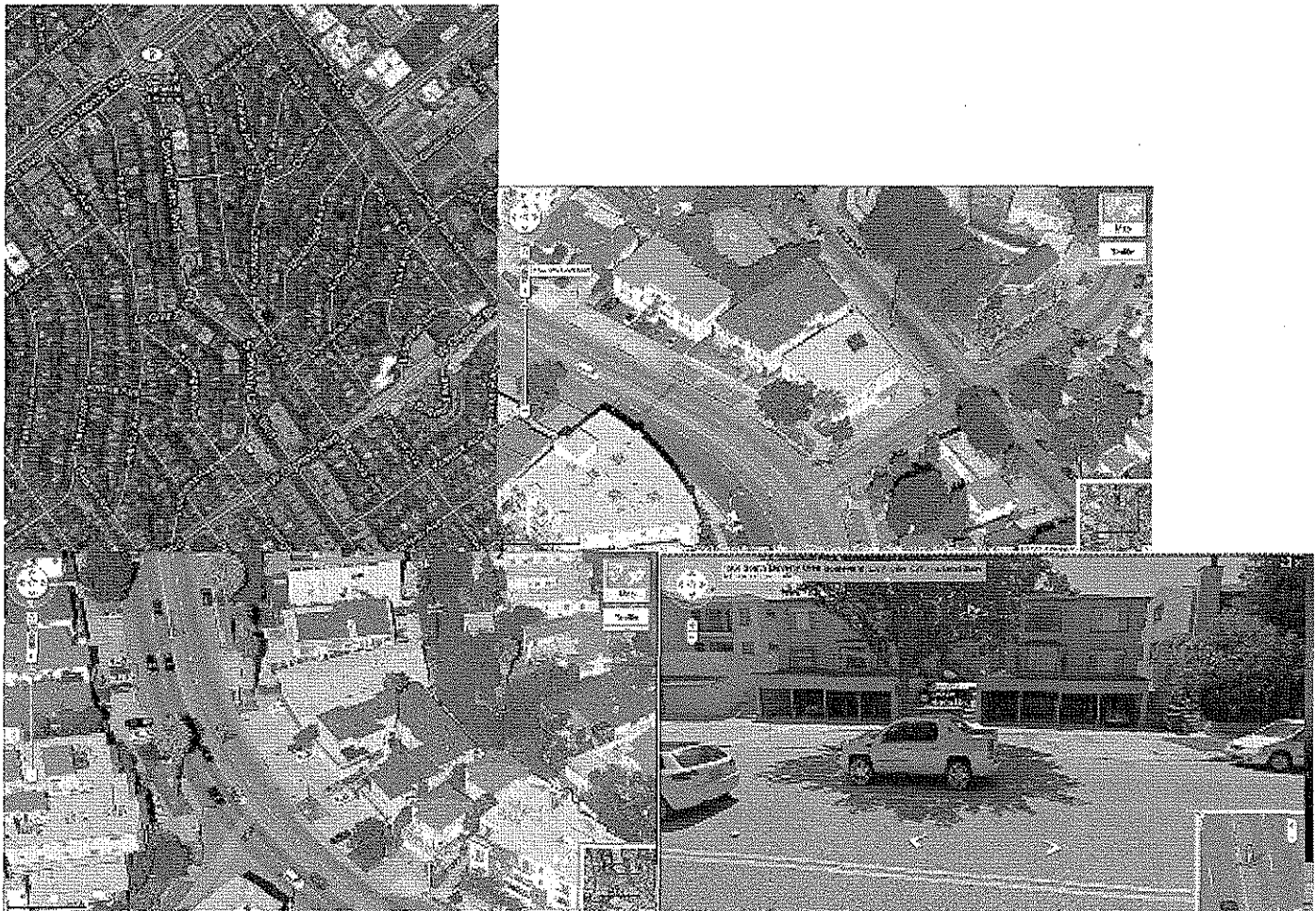
To: john.white@lacity.org, CD 11 Bill Rosendahl <councilmember.rosendahl@lacity.org>, Labonge Labonge <councilmember.labonge@lacity.org>, Councilmember Richard Alarcon <councilmember.alarcon@lacity.org>, Paul Koretz - cd 5 <paul.koretz@lacity.org>, Councilmember Bernard Parks <councilmember.parks@lacity.org>, Eric Norton - CD 5 <eric.norton@lacity.org>, Christopher Koontz <chris.koontz@lacity.org>  
Cc: Christine Luethje <lOOchie@mac.com>

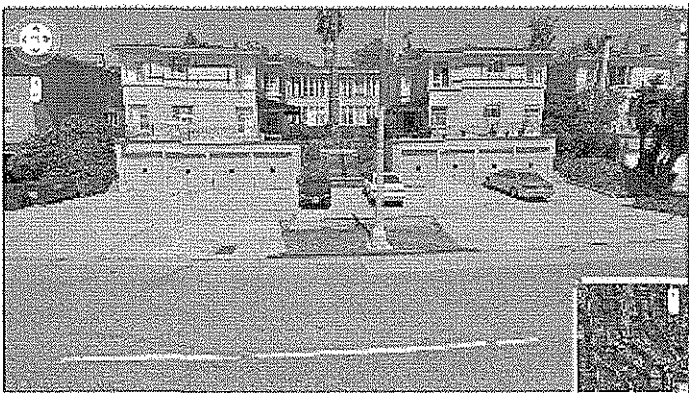
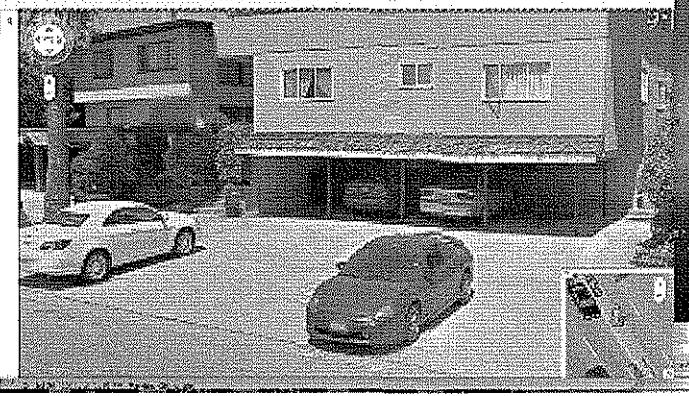
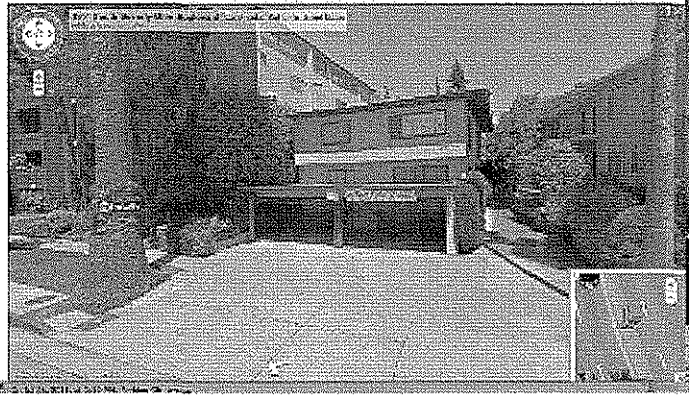
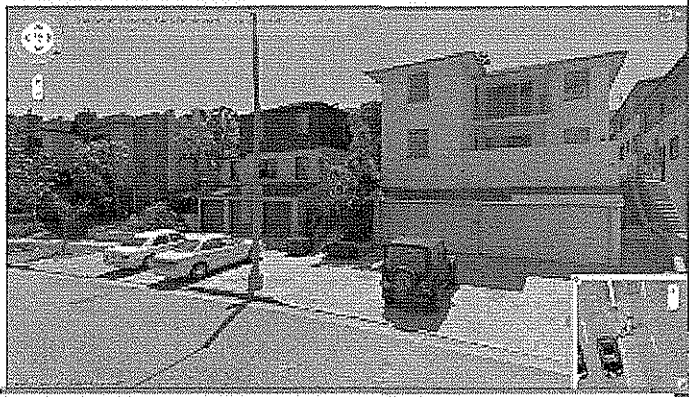
Please accept the attached photos of Beverly Glen Blvd. between Santa Monica and Olympic Blvds. for today's Transportation Committee agenda item CF 10-1673 (Rosendahl/Koretz).

They are examples of:

- A. Examples of the drive and apron spaces in front of the older buildings on Beverly Glen Blvd. ]
- B. Examples of the lack of street parking spaces on Beverly Glen Blvd.
- C. Example of the lack of alternate parking on the permit only streets surrounding East and West of Beverly Glen Blvd.

cc: CC Transportation Committee members







John White <john.white@lacity.org>

---

## File No. 10-1673 -- Motion to Park in Front of Driveways

1 message

---

benjie513@aol.com <benjie513@aol.com>

Wed, Jul 27, 2011 at 8:53 AM

To: john.white@lacity.org, councilman.rosendahl@lacity.org, paul.koretz@lacity.org,  
councilmember.labonge@lacity.org, councilmember.parks@lacity.org, councilmember.alarcon@lacity.org

I am opposed to this motion.

I live in an area where we have shared driveways. My son lives in the WLA area and there are many driveways that are also shared where he lives.

If this Motion goes forward and becomes the law, I know it's going to create havoc with homeowners who share driveways. It's bad enough when we have to fight with our neighbors over the space we have in our driveways, especially our neighbors with big SUVs where we can't see when we're backing out of our own space, or just getting in and out of our own cars. Having their car block the driveway, even if it's parked on their side, will only make it worse.

Linda Benjamin

---