

**WRITTEN REQUEST
TO CREATE A
COMMUNITY FACILITIES DISTRICT**

Honorable City Council
City of Los Angeles
John Ferraro Council Chamber
200 North Spring Street
Los Angeles, CA 90012

Members of the Council:

This is a written request to commence proceedings to create a community facilities district under the Mello-Roos Community Facilities Act of 1982 (the "Act") in connection with the financing of a new hall for the Los Angeles Convention Center, and the undersigned hereby state as follows:


1. Council Members. This Written Request is submitted by Councilmember Jan Perry and Councilmember Jose Huizar (the "Requesting Council Members"), each of whom is a member of the Council of the City of Los Angeles (the "City Council").

2. Proceedings Requested. The Requesting Council Members hereby request that the City Council institute proceedings pursuant to the Act to establish a community facilities district to be named "City of Los Angeles Community Facilities District No. 10 (Convention Center)" and to levy special taxes within the Community Facilities District in the initial annual amounts of approximately \$2,000,000 assessed to the new Event Center leasehold interest and \$4,000,000 assessed to LA Live Properties for Fiscal Year 2015-16, which amounts shall be increased, beginning in Fiscal Year 2016-17 and each Fiscal Year thereafter, by up to 3.0% of the amount in effect in the prior Fiscal Year.

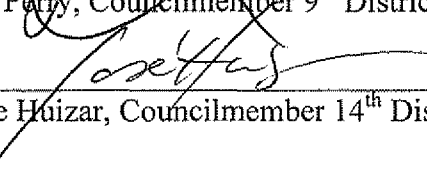
3. Boundaries of Community Facilities Districts. The boundaries of the territory that is proposed for inclusion in the Community Facilities District are described in Exhibit A attached hereto and made a part hereof.

4. Types of Facilities. The types of facilities and incidental expenses to be financed by the Community Facilities District are described in Exhibit B attached hereto and made a part hereof.

This Written Request is dated as of October 2, 2012.



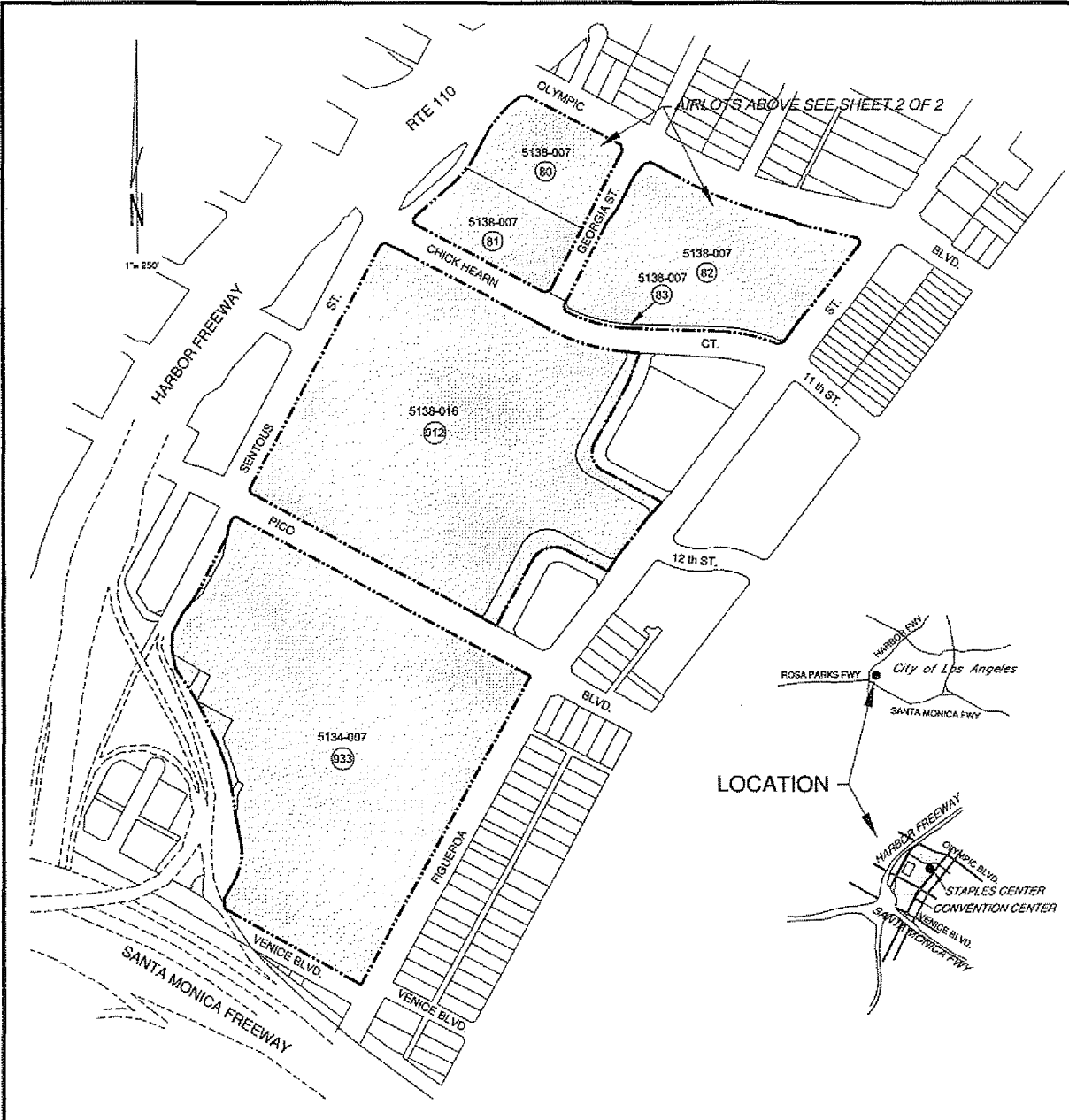
Jan Perry, Councilmember 9th District



Jose Huizar, Councilmember 14th District

**Exhibit A
Boundary Map
(Attached)**

PROPOSED BOUNDARY MAP
CITY OF LOS ANGELES
COMMUNITY FACILITIES DISTRICT NO. 10
 (CONVENTION CENTER)
 Los Angeles County, California



1. Filed in the office of the City Clerk of the City of Los Angeles this day of _____, 2012.

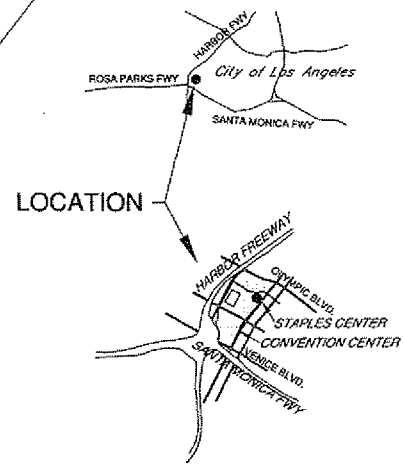
June Lagmay, City Clerk
 City of Los Angeles

2. I hereby certify that this map was approved by the City Council of the City of Los Angeles at a regular meeting thereof, held on the _____ day of _____, 2012, by its Ordinance No. _____

June Lagmay, City Clerk
 City of Los Angeles

3. Filed this _____ day of _____, 2012, at the hour of _____ o'clock _____ m., in Book _____ of Maps of Assessment at Page _____ in the Office of the County Recorder of the County of Los Angeles, State of California.

Dean C. Logan,
 Registrar-Recorder/County Clerk
 County of Los Angeles, State of California



LEGEND

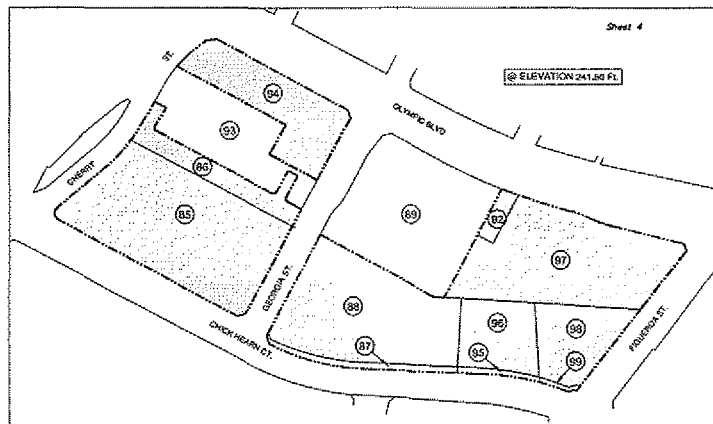
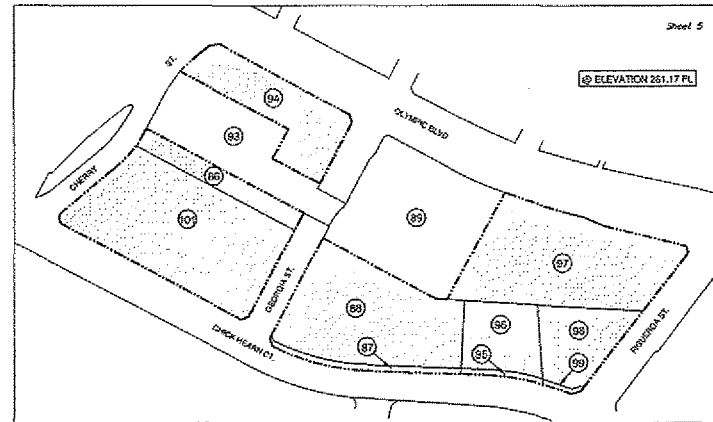
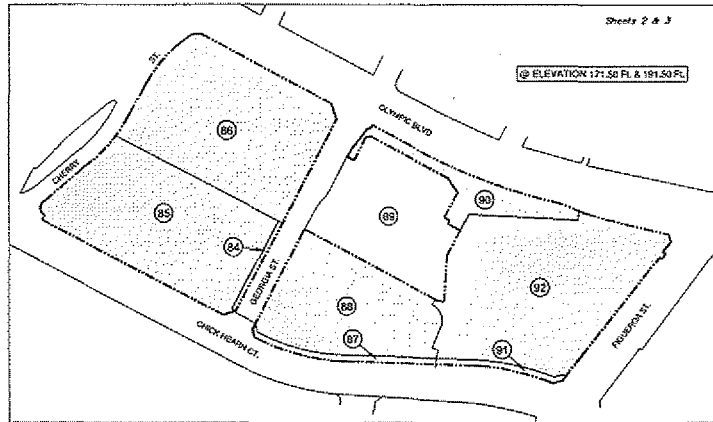
- CFD BOUNDARY LINE
- AREA WITHIN CFD
- ASSESSOR'S PARCEL NUMBER WITHIN MAP BK. & PAGE NOTED



PROPOSED BOUNDARY MAP
CITY OF LOS ANGELES
COMMUNITY FACILITIES DISTRICT NO.10
 (CONVENTION CENTER)
 Los Angeles County, California

LEGEND
 --- CFD BOUNDARY LINE
 □ AREA WITHIN CFD
 (10) ASSESSOR'S PARCEL NUMBER
 WITHIN MAP B.C. & PAGE NOTED

ASSESSOR'S PARCEL
 BOOK 5138 PAGE 007
 AIRLOT PLAN



SCALE 1" = 200'

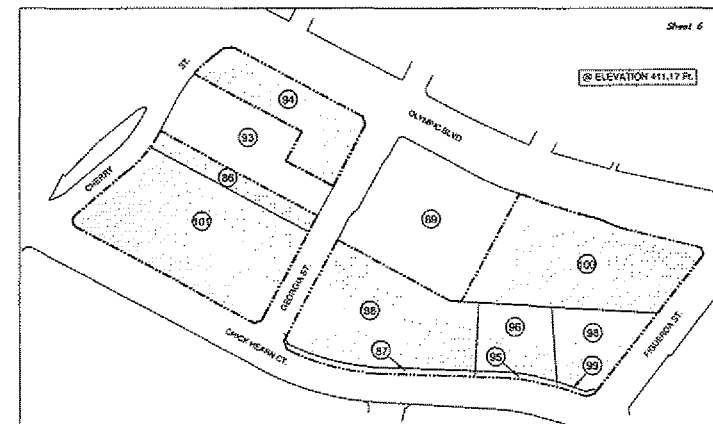


Exhibit B
Types of Facilities and Incidental Expenses to be Financed

Facilities

The facilities to be financed by the Community Facilities District include the acquisition, installation and construction of any buildings, improvements to real property, fixtures, equipment or personal property (in each case having an expected useful life of five years or longer) that is publicly owned and comprises any portion of the existing Los Angeles Convention Center and any contiguous expansion, construction, reconstruction, rehabilitation, replacement or upgrade thereto.

Incidental Expenses

The incidental expenses proposed to be incurred include the following:

(a) the costs of planning and design, architecture and engineering of the public facilities to be financed, including the costs of environmental evaluations of those facilities;

(b) the costs associated with the creation of the Community Facilities District, issuance of bonds, determination of the amount of taxes, collection of taxes, and other costs and expenditures incurred in order to carry out the authorized purposes of the Community Facilities District; and

(c) any other expenses incidental to the construction, completion and inspection of the authorized work.