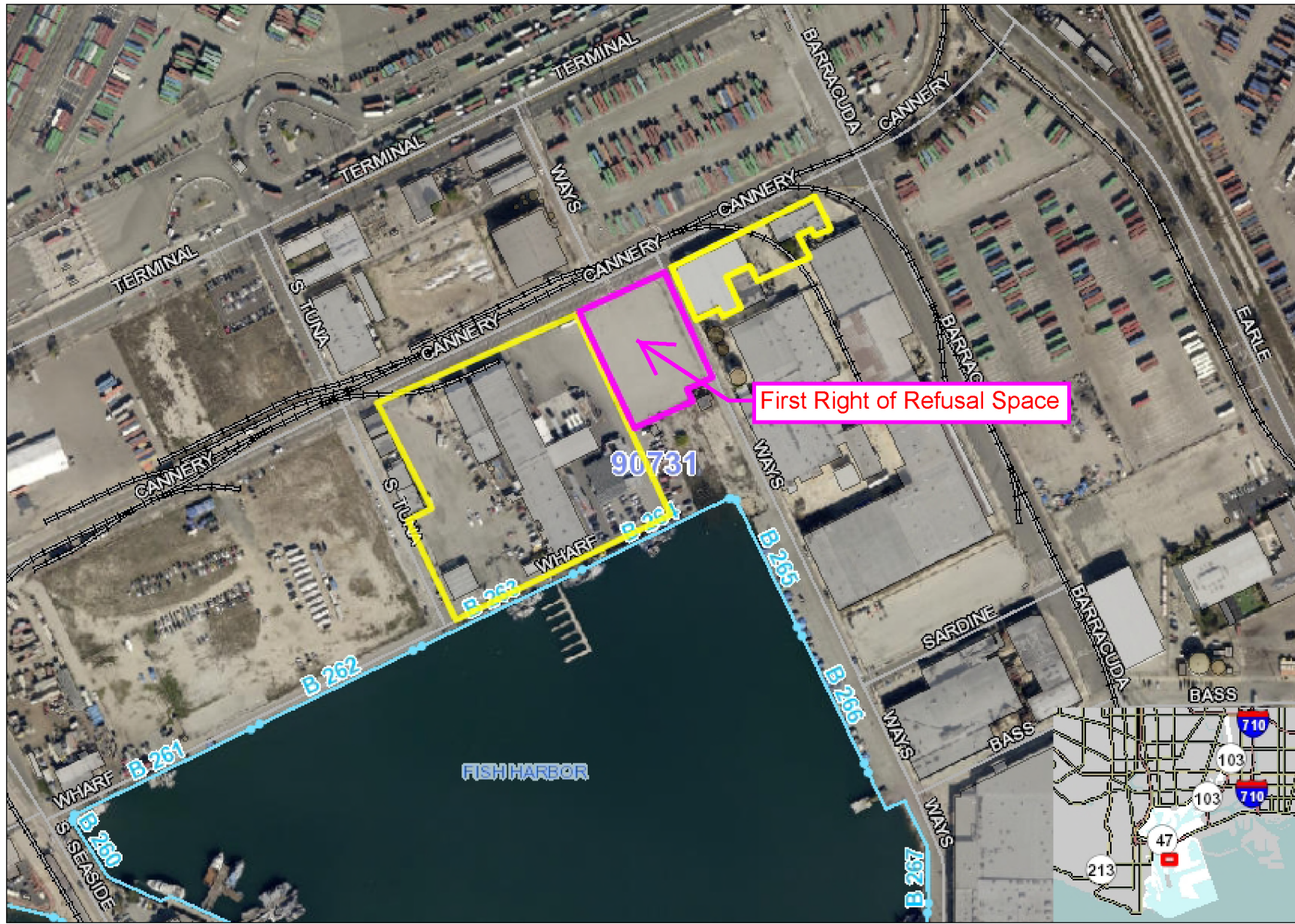


Tri-Marine Fish Company, LLC P. 892

Date Printed: 2 May 2017



Legend

- Fire Stations**
 - LAND
 - WATER
 - LAND AND WATER
- Police Stations**
 - CHP, LAND
 - LAPD, LAND
 - LAPPD, LAND
 - LAPPD, LAND AN
 - LAPPD, WATER
 - LASO, LAND
 - LBPD, LAND; Oth
- Hospital Points
- Lighthouses
- Airport Points - Th
- Public Airports Hel
- Museums
- Libraries
- Post Offices
- School Points**
 - College/University
 - Elementary School
 - High School / Mid
- POLA Public Arts
- Special Interest P**
 - Beach
 - Boat Launch
 - Bus Terminal
 - Campground (Pub
 - City Hall

SCALE 1: 4,388

731.3 0 731.3 Feet

Projection: WGS_1984_Web_Mercator_Auxiliary_Sphere



This map is a user generated static output from an Internet mapping site and is for reference only. Data layers that appear on this map may or may not be accurate, current, or otherwise reliable.

THIS MAP IS NOT TO BE USED FOR NAVIGATION



Transmittal 2