

#2

BOARD OF RECREATION AND
PARK COMMISSIONERS

BARRY A. SANDERS
PRESIDENT

LYNN ALVAREZ
VICE PRESIDENT

W. JEROME STANLEY
JILL T. WERNER
JOHNATHAN WILLIAMS

CITY OF LOS ANGELES
CALIFORNIA



ANTONIO R. VILLARAIGOSA
MAYOR

DEPARTMENT OF
RECREATION AND PARKS

221 NORTH FIGUEROA STREET
15TH FLOOR, SUITE 1550
LOS ANGELES, CA 90012

(213) 202-2633
FAX (213) 202-2613

JON KIRK MUKRI
GENERAL MANAGER

February 22, 2013

Honorable Members of the Ad Hoc River Committee
Ed P. Reyes, Chair
Tom LaBonge, Vice Chair
Jose Huizar, Member
c/o Office of the City Clerk, 200 N. Spring Street, Room 360
Los Angeles, CA 90012

Attn: Eric Villanueva

Date: 2/25/13
Submitted in Ad Hoc River Committee
Council File No: 11-1403
Item No.: 2
~~REC~~ REC & PARKS

Dear Ad Hoc River Committee Members:

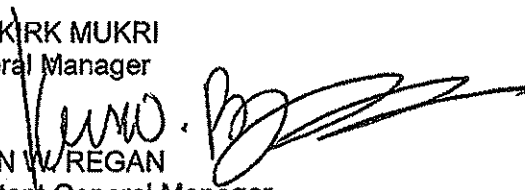
This is to affirm that the Department of Recreation and Parks (RAP) has no objection to the Los Angeles River Recreation Zone/Mountains, Recreation and Conservation Authority (MRCA) managed pilot Recreation Zone Program. This program is proposed to operate within the Elysian Valley segment of the Los Angeles River, and is described in a staff report submitted on January 25, 2013, to the Ad Hoc River Committee.

In preparation for the start of the pilot program, RAP recommends and supports a resolution to request that the MRCA manage the program under conditions mutually agreed to by the County of Los Angeles Flood Control District, United States Army Corps of Engineers (USACOE), and the City of Los Angeles.

Following City Council approval of a resolution, RAP similarly supports the MRCA's request for a letter of non-objection from the USACOE and the Department of Water and Power (DWP).

Sincerely,

JON KIRK MUKRI
General Manager


KEVIN W. REGAN
Assistant General Manager
Operations Branch

KWR:JK/sa

cc: Regina Adams, Recreation and Parks
Mike Shull, Recreation and Parks
Jon Kopitzke, Recreation and Parks

#2

Date: 2/25/13
 Submitted in RIVER Committee
 Council File No: 11-1903
 Item No.: 2
 Deputy: _____

**Los Angeles River/Elysian Valley
 Recreation Zone Pilot Program Proposal**

- The proposal will create a temporary zone for recreation within a defined 2.5 mile portion of the Los Angeles River.
- The defined area begins at Rattlesnake Park and moves southward to Egret Park.
- The MRCA will administer the recreation zone, with the MRCA Ordinance establishing usage regulations and management practices.

**Los Angeles River/Elysian Valley
 Recreation Zone Pilot Program Proposal**

- The proposed recreation zone will begin on May 27, 2013 (Memorial Day) and end on September 2, 2013 (Labor Day) and will help determine the viability of similar future activity. This period was selected to occur within the historic dry season for the Los Angeles River.
- Entrance and Exit points use City street Right of Ways leading into the river bottom.

**Los Angeles River/Elysian Valley
 Recreation Zone Pilot Program Proposal**

- The recreation zone occupancy will be limited to the period between sunrise and sunset each day.
- There would be no pre-registration, notification or user fees required for individual entrance into or use of the recreation zone.
- If an organized group would like to conduct an event, service, or program consistent with the Public Trust Doctrine, a MRCA use permit would be required, with those fees paying for the cost of administering the zone.


**Los Angeles River/Elysian Valley
 Recreation Zone Pilot Program Proposal**

Types of activities allowed by the Public Trust Doctrine include:

- Walking/hiking
- Fishing (per Fish and Game regulations)
- Bird watching
- Non-motorized boating (kayaking)

Los Angeles River/Elysian Valley Recreation Zone Pilot Program Proposal

- The recreation zone does not include the existing bike path or maintenance road on the banks above the river channel, and bicycling will not be allowed in the channel that is identified as the recreation zone.



- Motorized vehicles will not be allowed in the zone. This includes mopeds, motorcycles, four-wheel drive vehicles, and remote control vehicles/airplanes.

Los Angeles River/Elysian Valley Recreation Zone Pilot Program Proposal

The following activities and items involve habitat destruction or create safety issues and will be prohibited:

- Alcohol
- Smoking
- Weapons
- Nudity
- Glass containers
- Swimming
- Dogs or pets
- Open fires

Los Angeles River/Elysian Valley Recreation Zone Pilot Program Proposal

- Notification of policies and regulations will be achieved through posting on durable, mounted signage.
- Signage will inform visitors that they are entering the recreation zone at their own risk.
- Signage specifics will be covered later in this presentation

Los Angeles River/Elysian Valley Recreation Zone Pilot Program Proposal

- Boating will be a featured activity of the pilot program.
- Only non-motorized and steerable boats will be permitted

Mountains Recreation & Conservation Authority

- Established by joint exercise of powers agreement between the Santa Monica Mountains Conservancy and Conejo Recreation and Park District and the Rancho Simi Recreation and Park District.

MRCA PARK RANGERS

- Safety, Enforcement, and Education
- California Peace Officers
- Service and Safety Oriented
- River Safety Team (Operations Level Swiftwater)
- Kayak Instructors (ACA certified)
- Wildland Fire
- Interpretation and Education
- Special Operations

PUBLIC TRUST DOCTRINE "It is a title held in trust for the State that they may enjoy the navigation of the waters, carry on commerce over them, and have liberty of fishing..."

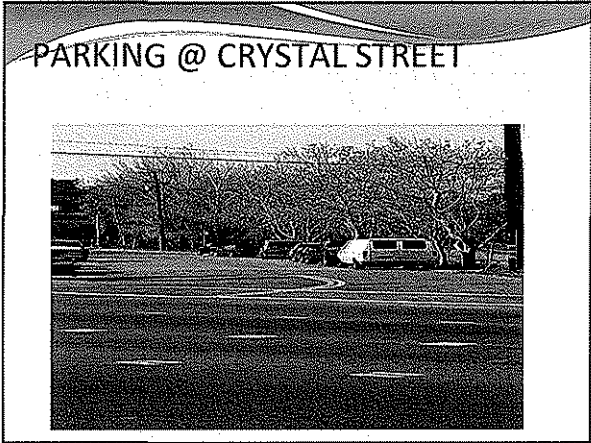
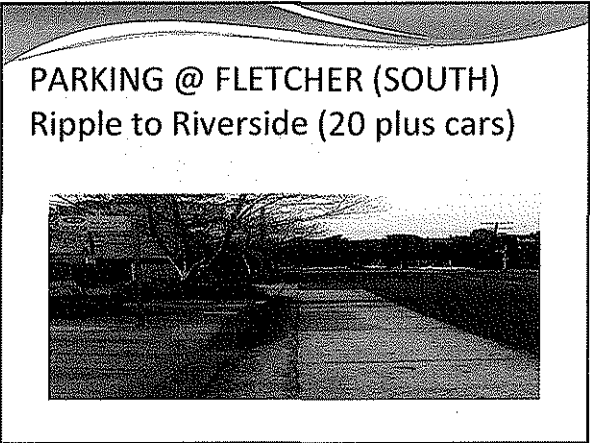
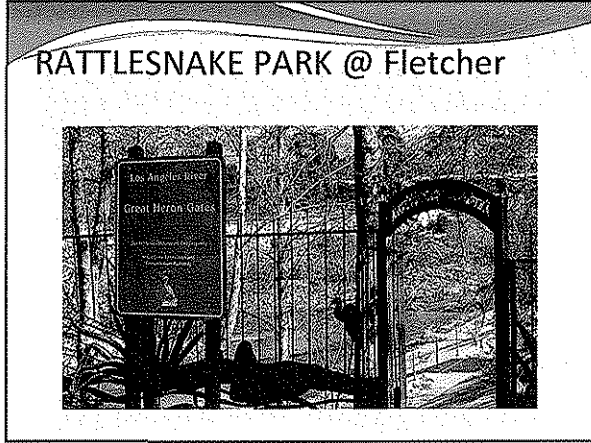
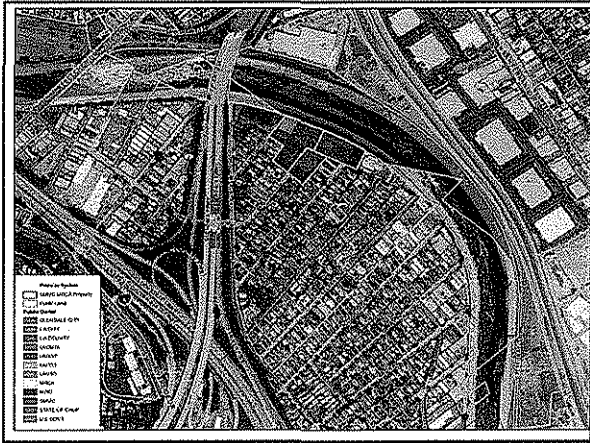
CASE LAW "use of navigable waters of the State for bathing, swimming, boating and general recreational purposes..."

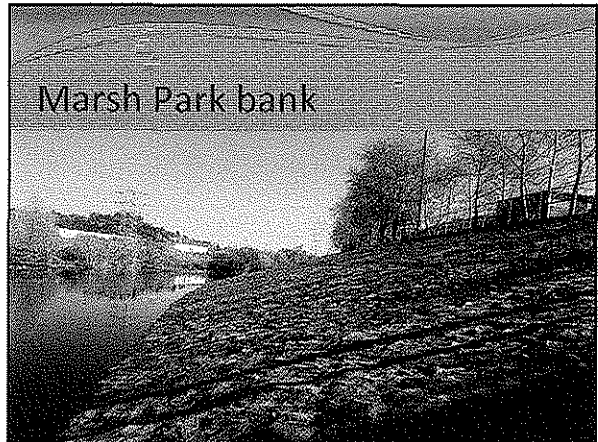
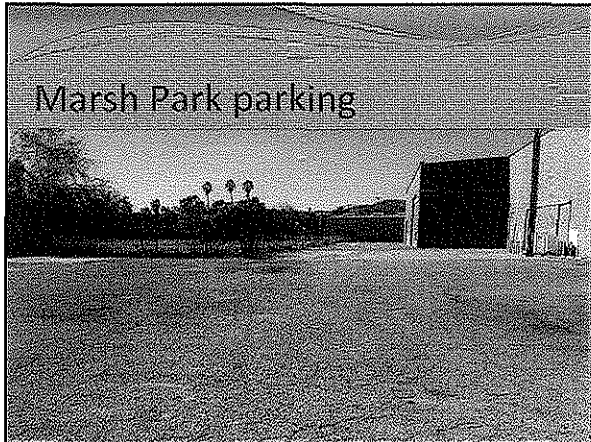
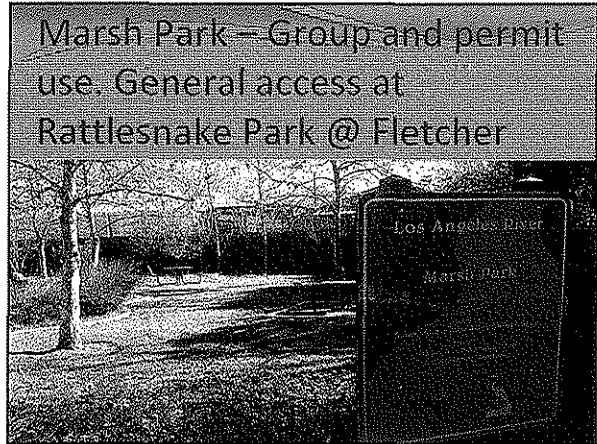
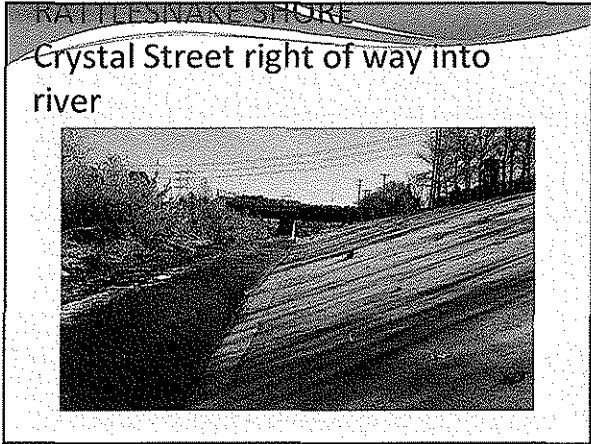
NAVIGABLE "IN FACT" TEST

United States Environmental Protection Agency TNW Determination July 6, 2010

On August 17, 2008, Pursuant to the MOA, designation of the "Special Case" made EPA responsible for determining the extent to which the Los Angeles River was protected as a "water of the United States." Specifically, EPA analyzed the river's status as a "Traditional Navigable Water," one of several categories of jurisdictional waters under the Act.

We conclude that the mainstem of the Los Angeles River is a "Traditional Navigable Water" from its origins at the confluence of Arroyo Calabasas and Bell Creek to San Pedro Bay at the Pacific Ocean, a distance of approximately 51 miles.

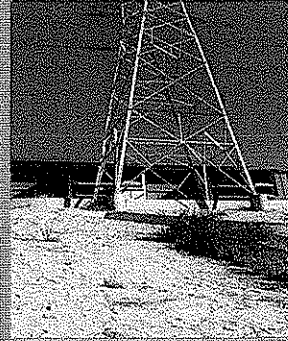




OSO PARK/FLETCHER LOADING



Wayfinding tower #1 (Last exit)

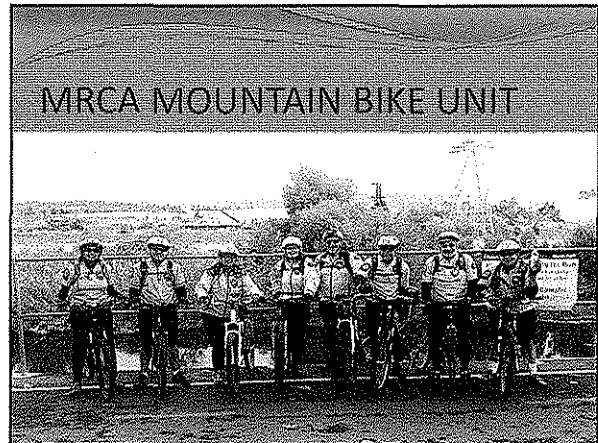
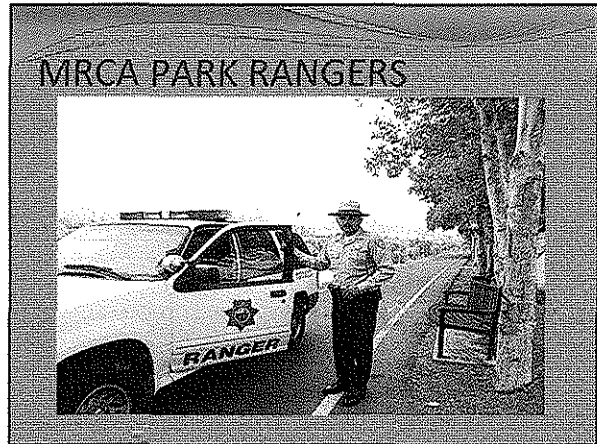
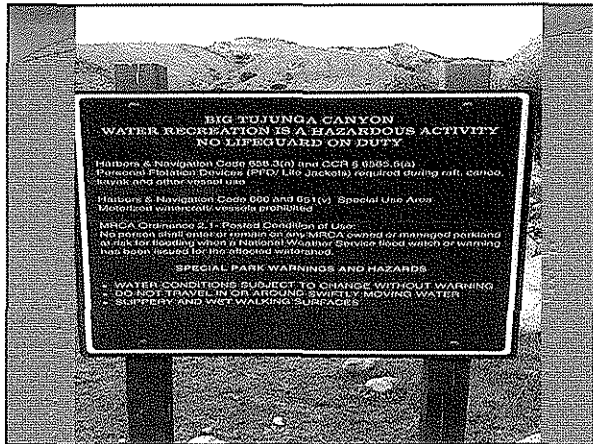


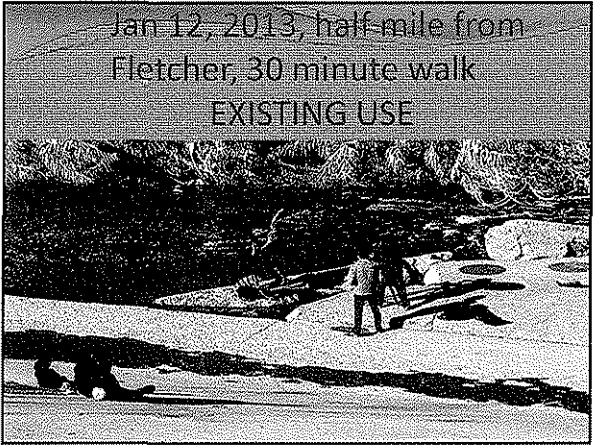
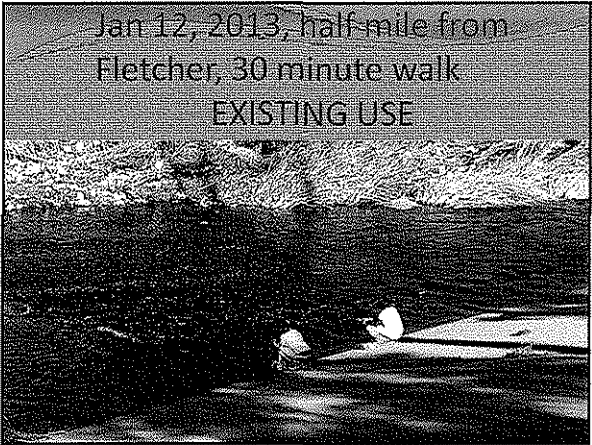
Level of Service Commitments

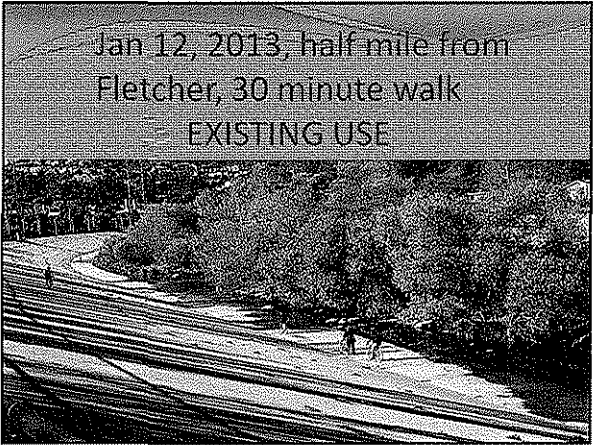
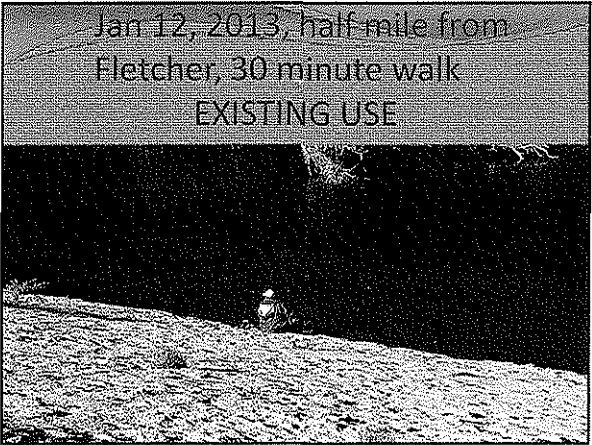
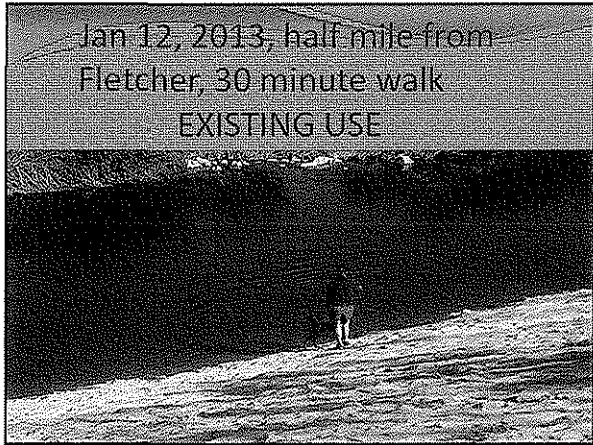
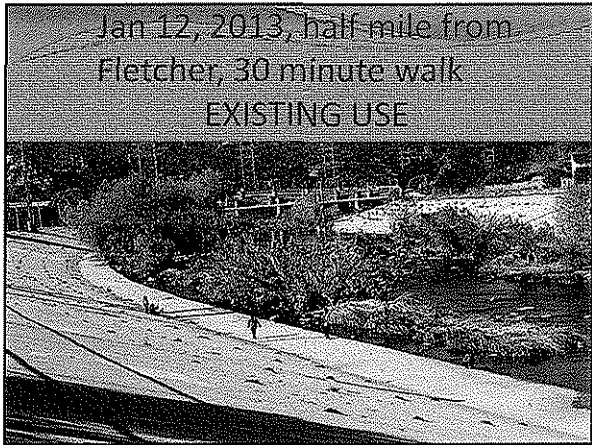
- MRCA Ranger Patrol
- MRCA Fire Crew
- MRCA Mountain Bike Unit
- MRCA Park Maintenance Staff
- MRCA Interpretation Staff
- MRCA Ranger Explorers
- MRCA Rivernet radio system/ordinance/signage
- LACC River Corps Maintenance Program
- LAPD – **Retains public safety responsibilities**
- LAFD – **Retains public safety responsibilities**
- LA City Park Rangers/Department of Recreation

MRCA MANAGEMENT MODELS

- Management of over 65,000 acres
- Contract management (Rancho Pajos Verdes, Whittier, Santa Clarita, NHPA, Rivers & Mountains Conservancy, Desert & Mountains Conservancy)
- River Park management (Big Tujunga Canyon, Rio Hondo River, Los Angeles River, San Gabriel River, Ballona Wetlands)
- Mulholland Scenic Corridor







- Existing and proposed recreational zone activities (Kayak program) can be effectively managed using the MRCA Ordinance.
- City, County, and US Army Corps of Engineers use policies and restrictions can be incorporated into the MRCA Ordinance and be enforced.
- ANY California Peace Officer may enforce the MRCA Ordinance.

Proposed Signage

- The HUD Riverfront Collaborative, funded with a \$2.2 million Sustainable Communities Grant will provide funds for riverfront signage.
- For more information, please visit:

www.mylariver.org

Northeast Los Angeles Riverfront
Collaborative (NELA RC)
Signage Program
Community Engagement/Participation

Community Engagement

- Design of sign
- Sign Placement
- Content

Two types of signs

- Temporary
- Permanent

Temporary vs. Permanent Signs

Overall Purpose of Temporary Signs

- Protect the Area
- Guide visitors to boat launch areas
- Guide visitors to Park entrances and river access
- Set Rules to protect the neighborhoods and river habitat
- Provide base rules enforcement

Temporary Signs (2 Temporary sign types)

Coincide with Recreation Zone and Boat Pilot Program Memorial Day through Labor Day
3 to 4 signs.

1. General Rules (Recreation Zone)
2. Liability Pertaining to Boating

Targeted installation date for Temporary Signs
Prior to May 17, 2013

