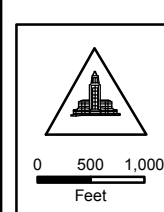


CM:
 174 B 125, 174 B 129, 177 B 113, 177 B 117, 177 B 121, 177 B 125, 177 B 129,
 180 B 101, 180 B 105, 180 B 109, 180 B 113, 180 B 117, 180 B 121, 180 B 125,
 180 B 129, 183 B 101, 183 B 106, 183 B 109, 183 B 113, 183 B 117, 183 B 121,
 183 B 125.

ALL ZONING AND HEIGHT DISTRICTS IN THE AFFECTED AREA REMAIN THE SAME. SUFFIX **-RIO** WAS ADDED BECAUSE THE AREA IS NOW INCLUDED IN THE LOS ANGELES RIVER IMPROVEMENT OVERLAY (LA-RIO), CPC 2007-3036-RIO. ALL BOUNDARIES FOLLOW EXISTING ZONES, EXCEPT WHERE NOTED OR DIMENSIONED. FREEWAY RIGHT OF WAY ARE NOT A PART OF THIS RIO OVERLAY.

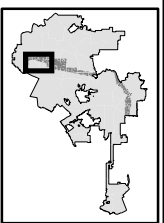
 **-RIO**
 **LOS ANGELES RIVER IMPROVEMENT OVERLAY DISTRICT BOUNDARY**



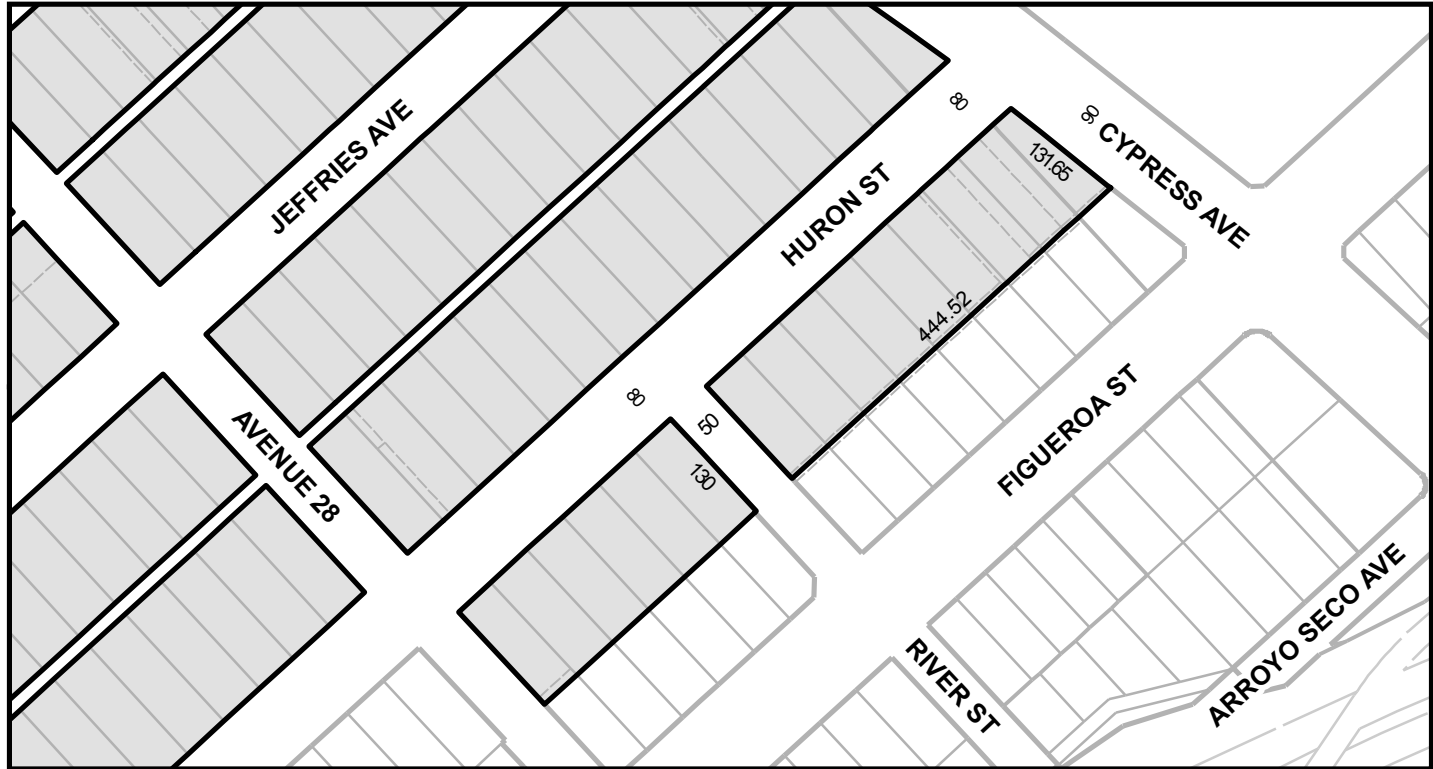
LOS ANGELES RIVER IMPROVEMENT OVERLAY (LA-RIO)

CPC-2007-3036-RIO

LH/LL 041114 SHEET 1 OF 9



SEE SHEET 2



ALL ZONING AND HEIGHT DISTRICTS IN THE AFFECTED AREA REMAIN THE SAME. SUFFIX **-RIO** WAS ADDED BECAUSE THE AREA IS NOW INCLUDED IN THE LOS ANGELES RIVER IMPROVEMENT OVERLAY (LA-RIO), CPC 2007-3036-RIO. ALL BOUNDARIES FOLLOW EXISTING ZONES, EXCEPT WHERE NOTED OR DIMENSIONED. FREEWAY RIGHT OF WAY ARE NOT A PART OF THIS RIO OVERLAY.

C.M.
142.5 A 219, 142.5 A 221, 144 A 221, 133.5 A 217,
135 A 217, 135 A 219, 141 A 221, 141 A 223,
142.5 A 221, 142.5 A 223



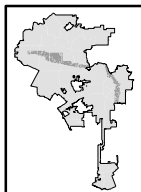
**LOS ANGELES RIVER
IMPROVEMENT OVERLAY (LA-RIO)**

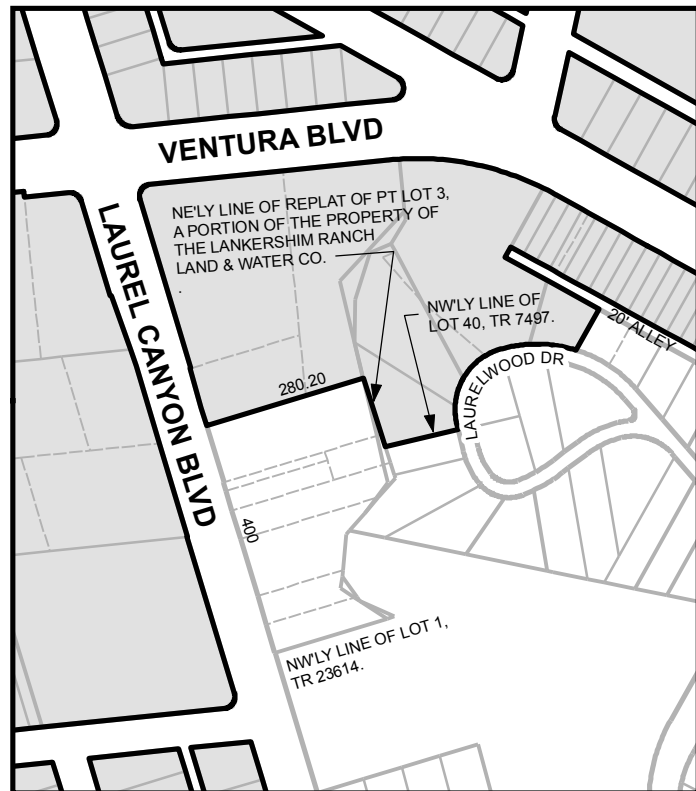
CPC-2007-3036-RIO

LH/LD

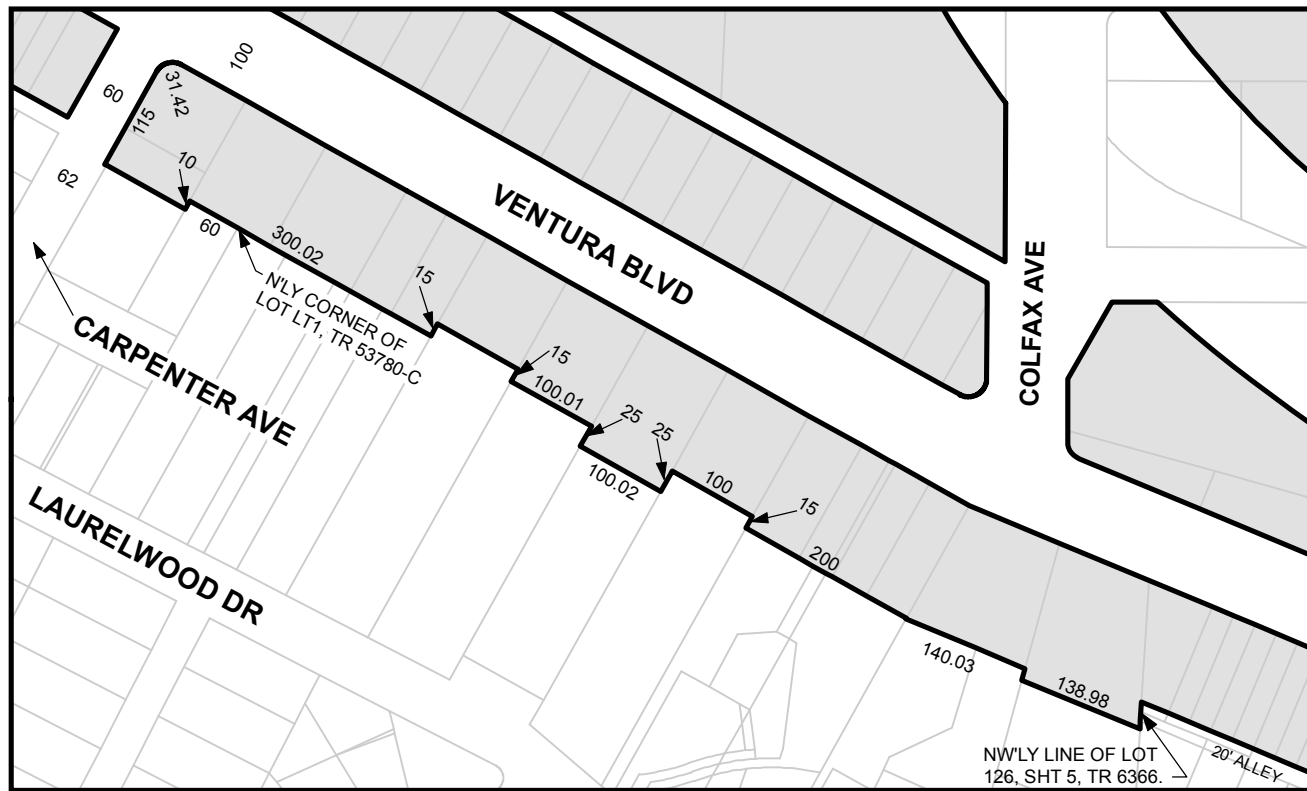
040814

SHEET 9 OF 9

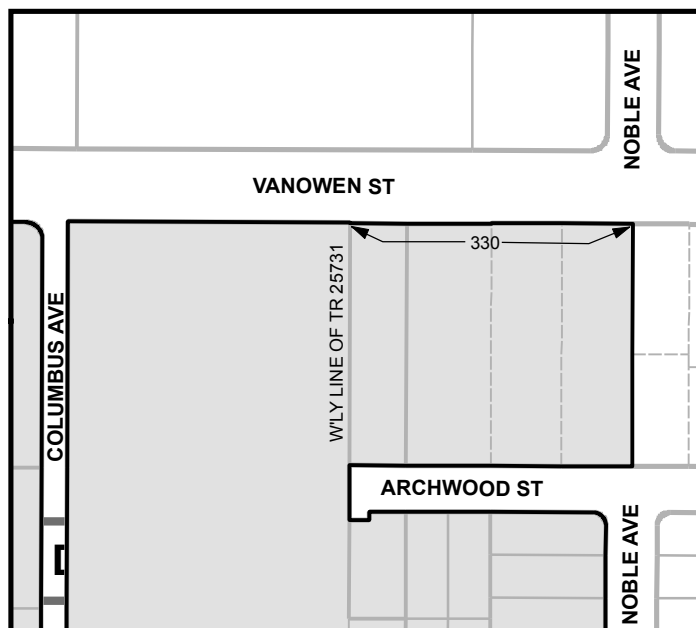




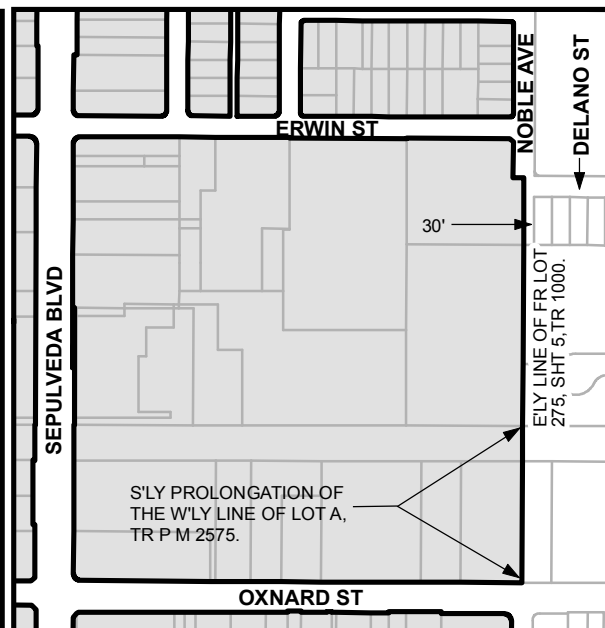
DETAIL "3A"



DETAIL "3B"



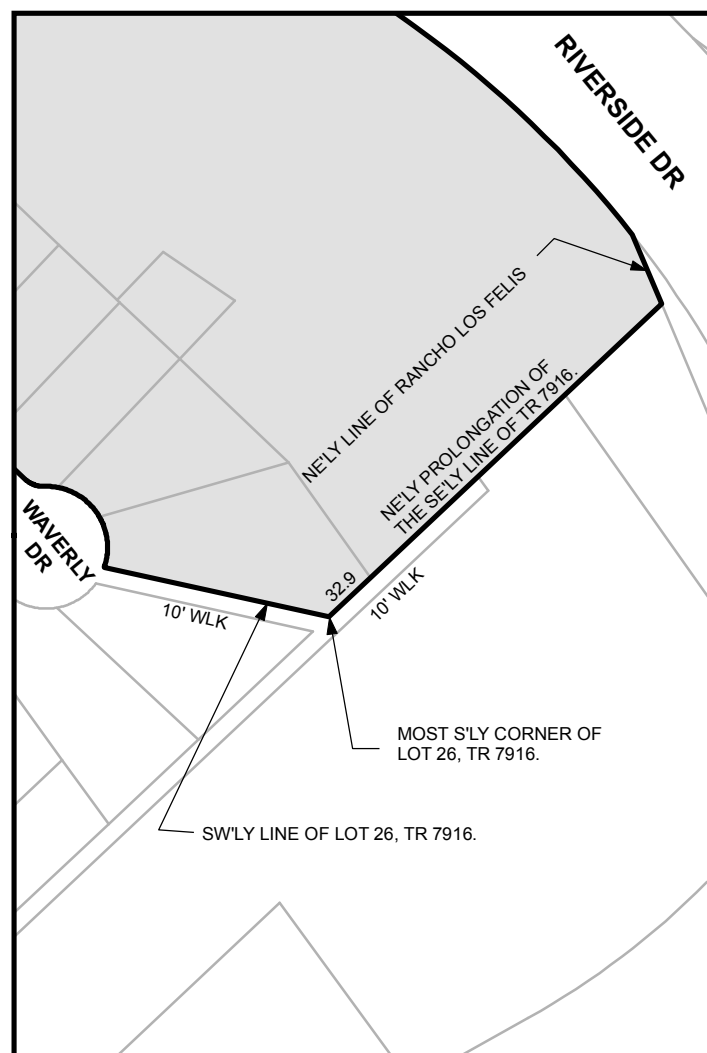
DETAIL "2A"



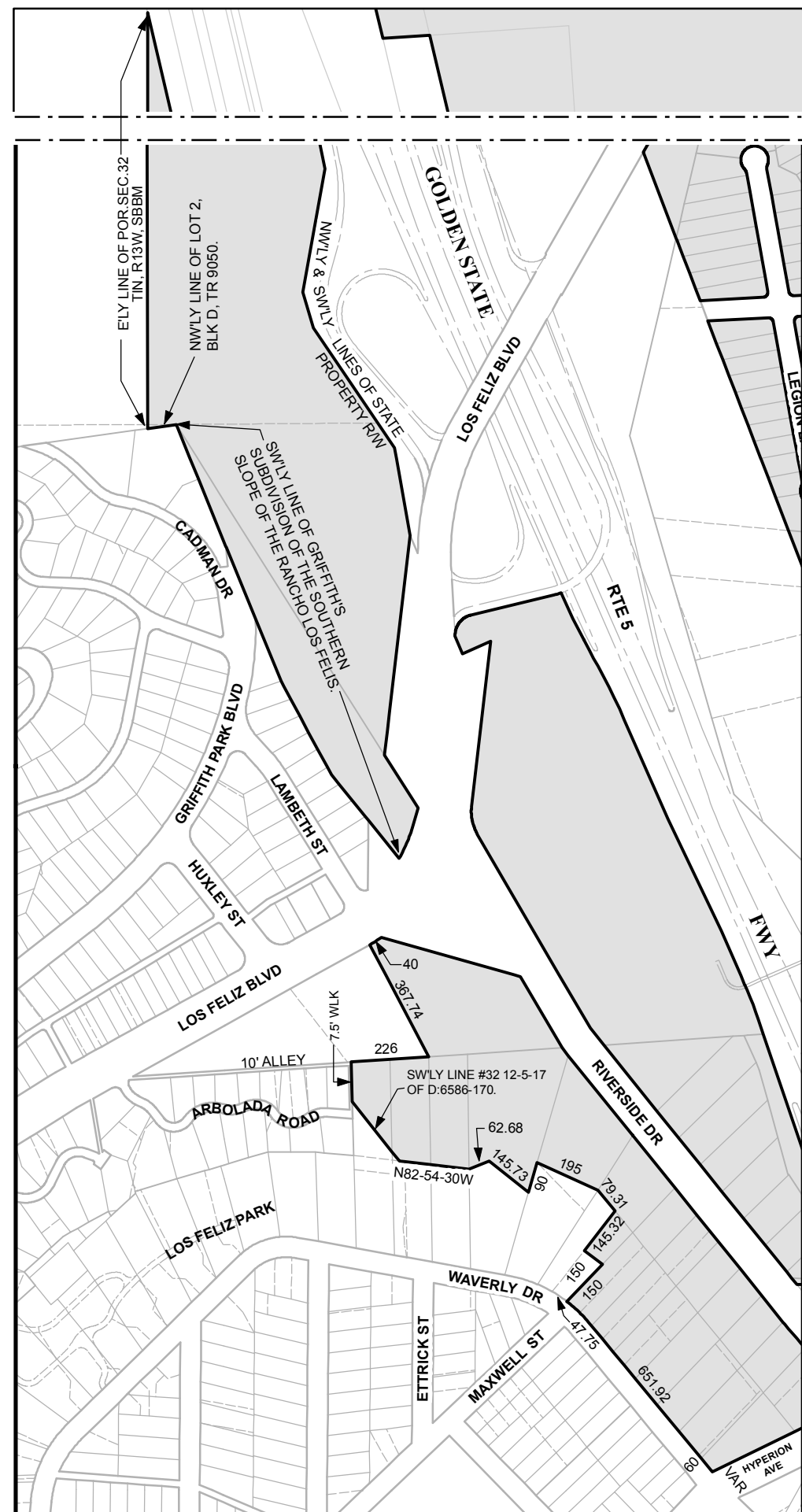
DETAIL "2B"

ALL ZONING AND HEIGHT DISTRICTS IN THE AFFECTED AREA REMAIN THE SAME. SUFFIX -RIO WAS ADDED BECAUSE THE AREA IS NOW INCLUDED IN THE LOS ANGELES RIVER IMPROVEMENT OVERLAY (LA-RIO), CPC 2007-3036-RIO. ALL BOUNDARIES FOLLOW EXISTING ZONES, EXCEPT WHERE NOTED OR DIMENSIONED. FREEWAY RIGHT OF WAY ARE NOT A PART OF THIS RIO OVERLAY.

C.M.
153 A 205, 154-5 A 203, 154-5 A 205, 156 B 204, 159 B 201, 156 A 205, 150 B 209, 162 B 165, 162 B 169, 162 B 169, 168 B 161, 180 B 145, 177 B 145



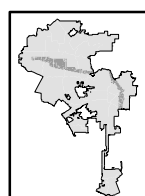
DETAIL "5A"



DETAIL "4A"



LOS ANGELES RIVER IMPROVEMENT OVERLAY (LA-RIO)

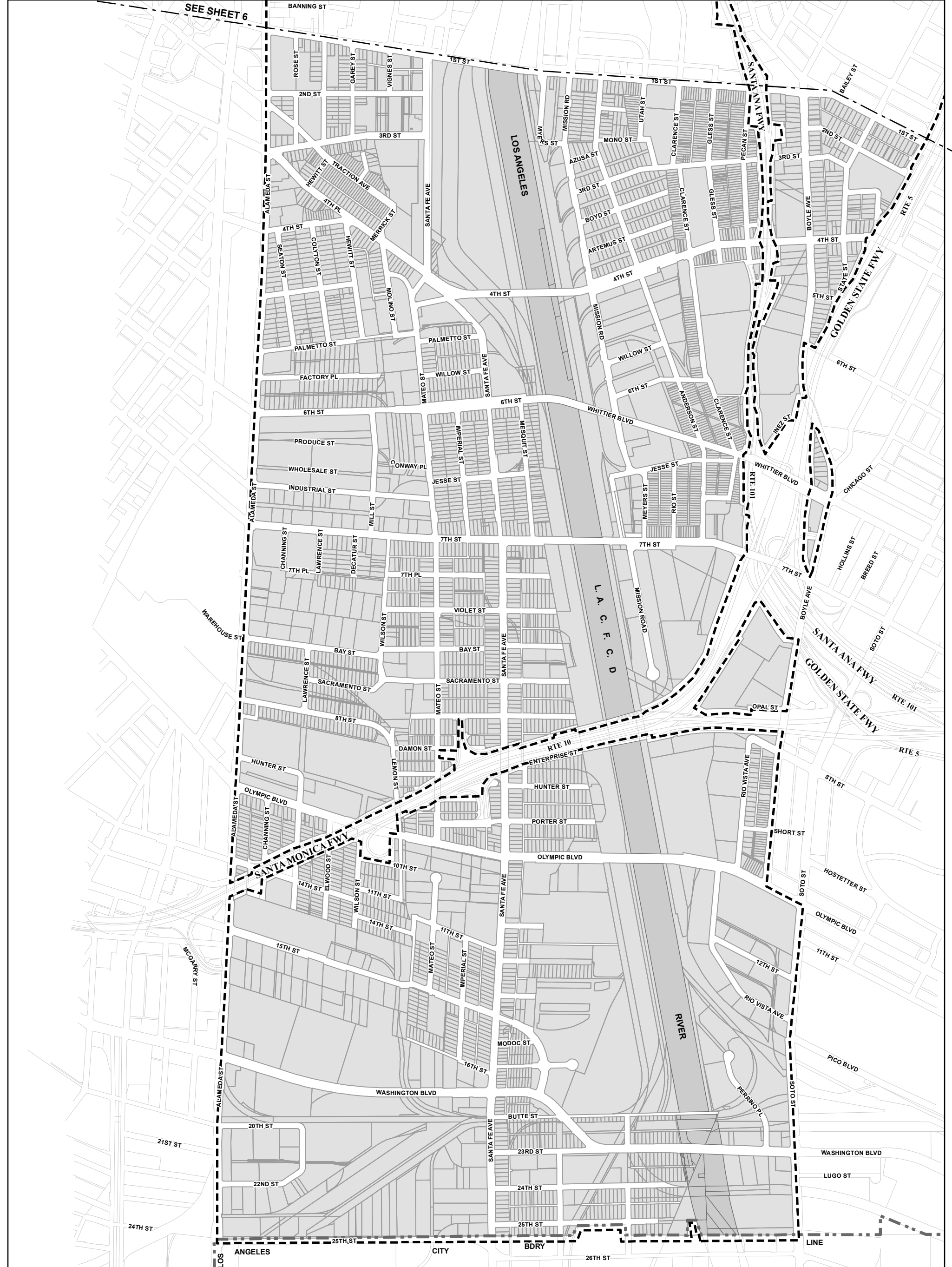


CPC-2007-3036-RIO

LHI

040814

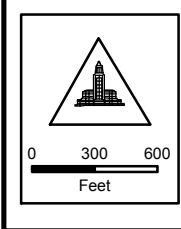
SHEET 8 OF 9



ALL ZONING AND HEIGHT DISTRICTS IN THE AFFECTED AREA REMAIN THE SAME. SUFFIX **-RIO** WAS ADDED BECAUSE THE AREA IS NOW INCLUDED IN THE LOS ANGELES RIVER IMPROVEMENT OVERLAY (LA-RIO), CPC 2007-3036-RIO. ALL BOUNDARIES FOLLOW EXISTING ZONES, EXCEPT WHERE NOTED OR DIMENSIONED. FREEWAY RIGHT OF WAY ARE NOT A PART OF THIS RIO OVERLAY.

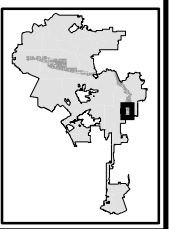
C.M.
 129 A 215, 129 A 217, 129 A 219, 129 A 221, 127-5 A 215, 127-5 A 217, 127 5 A 219, 127 5 A 221, 126 A 215, 126 A 217, 126 A 219, 126 A 221, 124-5 A 215, 124-5 A 217, 124-5 A 219, 124-5 A 221, 123 A 215, 123 A 217, 123 A 219, 123 A 221, 121-5 A 215, 121-5 A 217, 121-5 A 219, 121-5 A 221, 120 A 215, 120 A 217, 120 A 219, 120 A 221, 118-5 A 215, 118-5 A 217, 118-5 A 219, 118-5 A 221, 117 A 215, 117 A 217, 117 A 219, 117 A 221.

- RIO**
- LOS ANGELES RIVER IMPROVEMENT OVERLAY DISTRICT BOUNDARY**
- City Boundary**



LOS ANGELES RIVER IMPROVEMENT OVERLAY (LA-RIO)

CPC-2007-3036-RIO



SEE SHEET 5

SEE DETAIL "6A"
SHEET 9

NORTH MAIN ST

L. A. C. F. C. D.

GOLDEN STATE FWY

SAN BERNARDINO FWY

RTE 10

HOLLYWOOD FWY

RTE 101

LOS ANGELES

MISSION ROAD

SANTANA FWY

RTE 5

TEMPLE ST

1ST ST

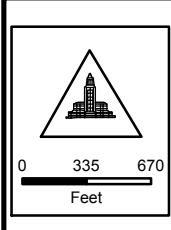
SEE SHEET 7

ALAMEDA ST

C.M.
136-5 A 219, 136-5 A 221, 135 A 215, 135 A 217, 135 A 219,
135 A 221, 133-5 A 215, 133-5 A 217, 133-5 A 219, 133-5 A 217,
132 A 215, 132 A 217, 132 A 219, 132 A 221, 130-5 A 215,
130-5 A 217, 130-5 A 219, 130-5 A 221, 130-5 A 223, 129 A 215,
129 A 217, 129 A 219, 129 A 224.

ALL ZONING AND HEIGHT DISTRICTS IN THE AFFECTED AREA REMAIN THE SAME. SUFFIX **-RIO** WAS ADDED BECAUSE THE AREA IS NOW INCLUDED IN THE LOS ANGELES RIVER IMPROVEMENT OVERLAY (LA-RIO), CPC 2007-3036-RIO. ALL BOUNDARIES FOLLOW EXISTING ZONES, EXCEPT WHERE NOTED OR DIMENSIONED. FREEWAY RIGHT OF WAY ARE NOT A PART OF THIS RIO OVERLAY.

 **-RIO**
 **LOS ANGELES RIVER IMPROVEMENT OVERLAY DISTRICT BOUNDARY**



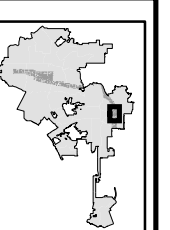
LOS ANGELES RIVER IMPROVEMENT OVERLAY (LA-RIO)

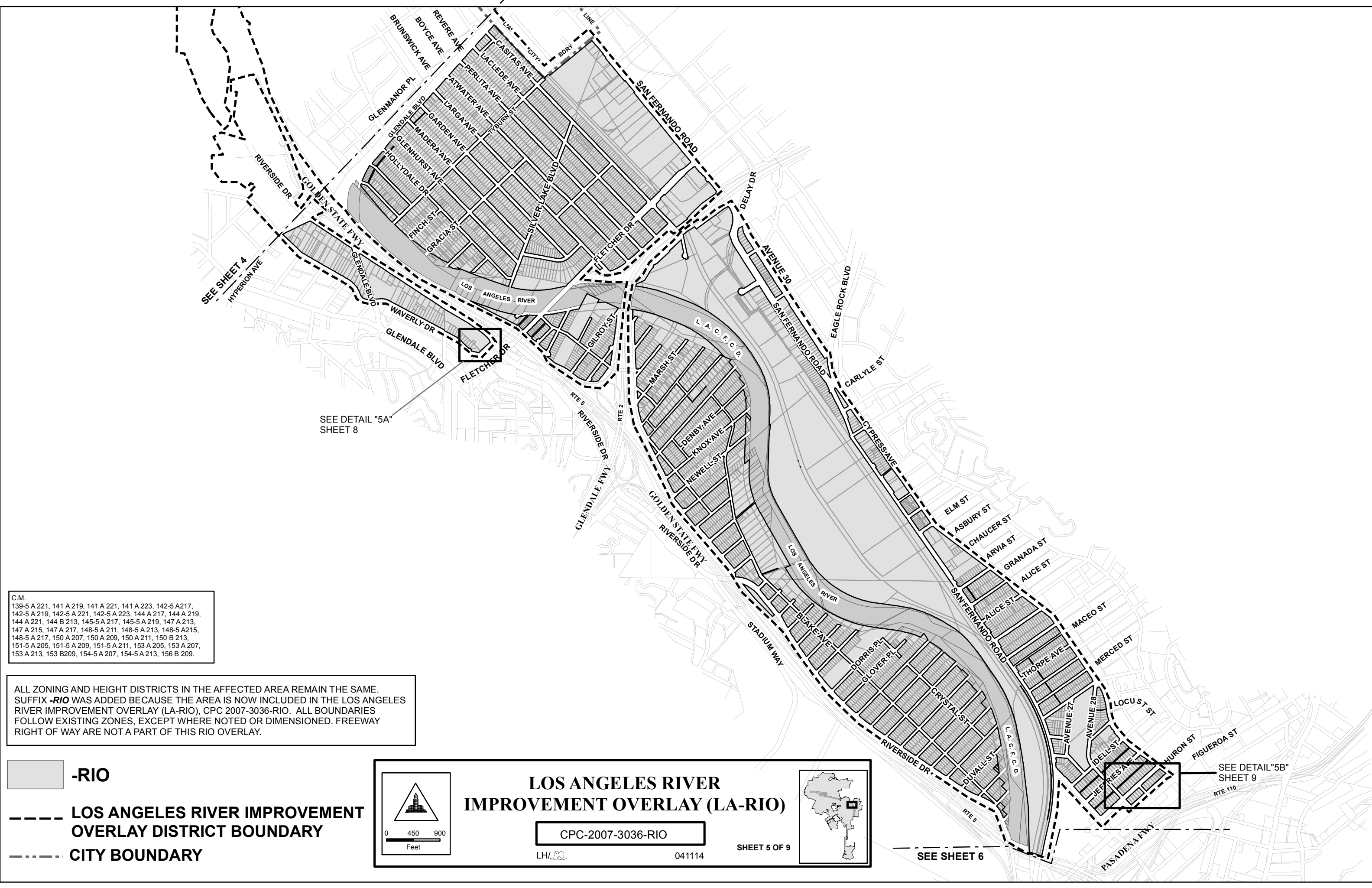
CPC-2007-3036-RIO

LH/

041114


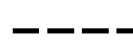

SHEET 6 OF 9

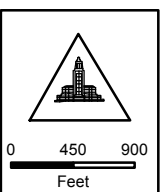




C.M.
 139-5 A 221, 141 A 219, 141 A 221, 141 A 223, 142-5 A217,
 142-5 A 219, 142-5 A 221, 142-5 A 223, 144 A 217, 144 A 219,
 144 A 221, 144 B 213, 145-5 A 217, 145-5 A 219, 147 A 213,
 147 A 215, 147 A 217, 148-5 A 211, 148-5 A 213, 148-5 A215,
 148-5 A 217, 150 A 207, 150 A 209, 150 A 211, 150 B 213,
 151-5 A 205, 151-5 A 209, 151-5 A 211, 153 A 205, 153 A 207,
 153 A 213, 153 B209, 154-5 A 207, 154-5 A 213, 156 B 209.

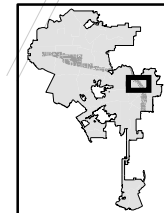
ALL ZONING AND HEIGHT DISTRICTS IN THE AFFECTED AREA REMAIN THE SAME. SUFFIX **-RIO** WAS ADDED BECAUSE THE AREA IS NOW INCLUDED IN THE LOS ANGELES RIVER IMPROVEMENT OVERLAY (LA-RIO), CPC 2007-3036-RIO. ALL BOUNDARIES FOLLOW EXISTING ZONES, EXCEPT WHERE NOTED OR DIMENSIONED. FREEWAY RIGHT OF WAY ARE NOT A PART OF THIS RIO OVERLAY.

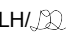
-  **-RIO**
-  **LOS ANGELES RIVER IMPROVEMENT OVERLAY DISTRICT BOUNDARY**
-  **CITY BOUNDARY**



LOS ANGELES RIVER IMPROVEMENT OVERLAY (LA-RIO)

CPC-2007-3036-RIO

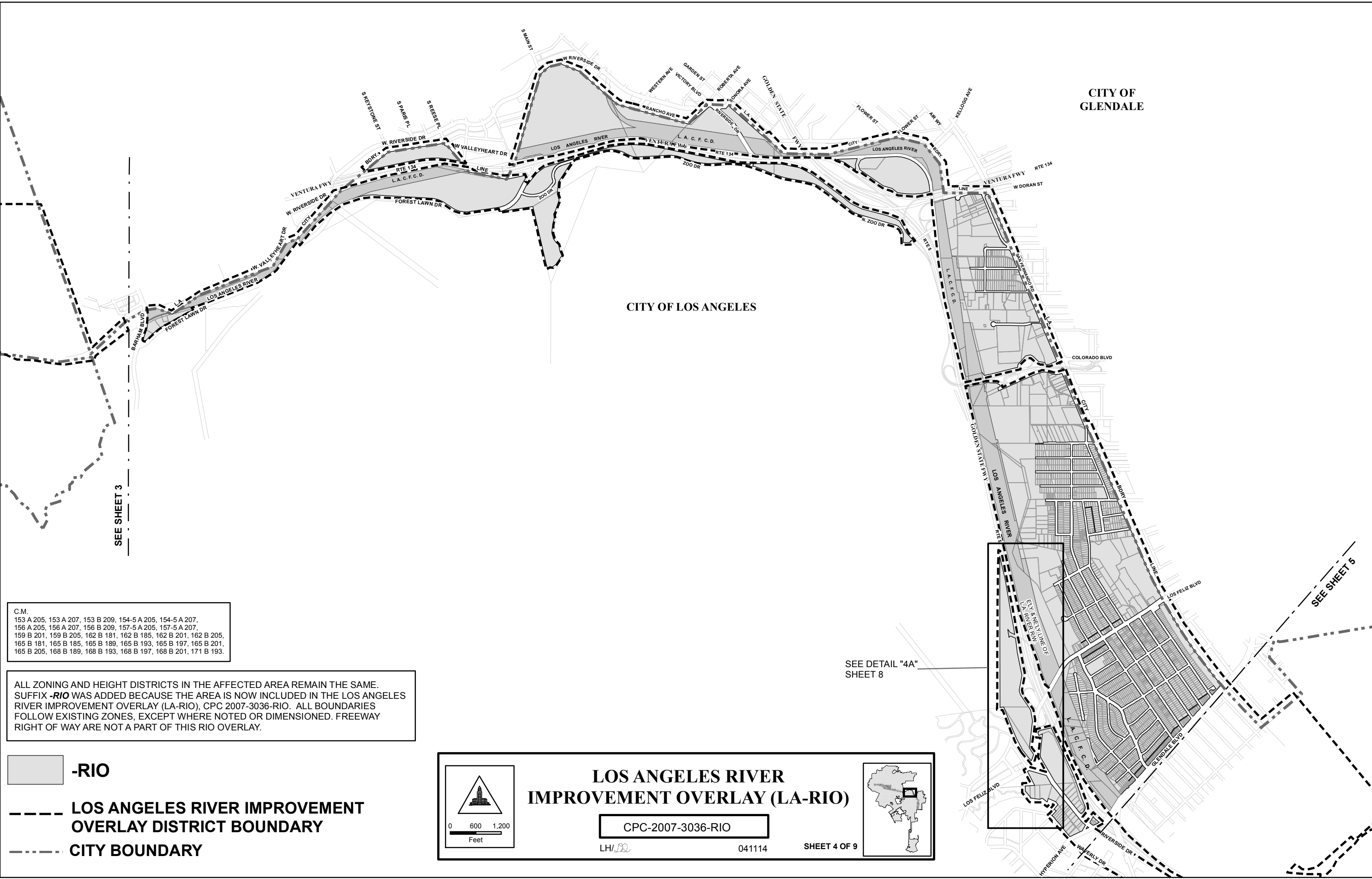


LHI 
041114
SHEET 5 OF 9

SEE DETAIL "5B"
SHEET 9

SEE SHEET 6

SEE DETAIL "5A"
SHEET 8



CITY OF
GLENDALE


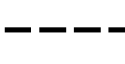

CITY OF LOS ANGELES

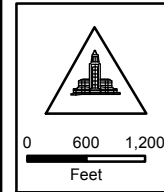
SEE SHEET 3

SEE SHEET 5

C.M.
153 A 205, 153 A 207, 153 B 209, 154-5 A 205, 154-5 A 207,
156 A 205, 156 A 207, 156 B 209, 157-5 A 205, 157-5 A 207,
159 B 201, 159 B 205, 162 B 181, 162 B 185, 162 B 201, 162 B 205,
165 B 181, 165 B 185, 165 B 189, 165 B 193, 165 B 197, 165 B 201,
165 B 205, 168 B 189, 168 B 193, 168 B 197, 168 B 201, 171 B 193.

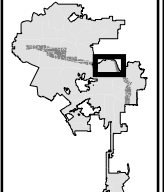
ALL ZONING AND HEIGHT DISTRICTS IN THE AFFECTED AREA REMAIN THE SAME. SUFFIX **-RIO** WAS ADDED BECAUSE THE AREA IS NOW INCLUDED IN THE LOS ANGELES RIVER IMPROVEMENT OVERLAY (LA-RIO), CPC 2007-3036-RIO. ALL BOUNDARIES FOLLOW EXISTING ZONES, EXCEPT WHERE NOTED OR DIMENSIONED. FREEWAY RIGHT OF WAY ARE NOT A PART OF THIS RIO OVERLAY.

-  **-RIO**
-  **LOS ANGELES RIVER IMPROVEMENT OVERLAY DISTRICT BOUNDARY**
-  **CITY BOUNDARY**



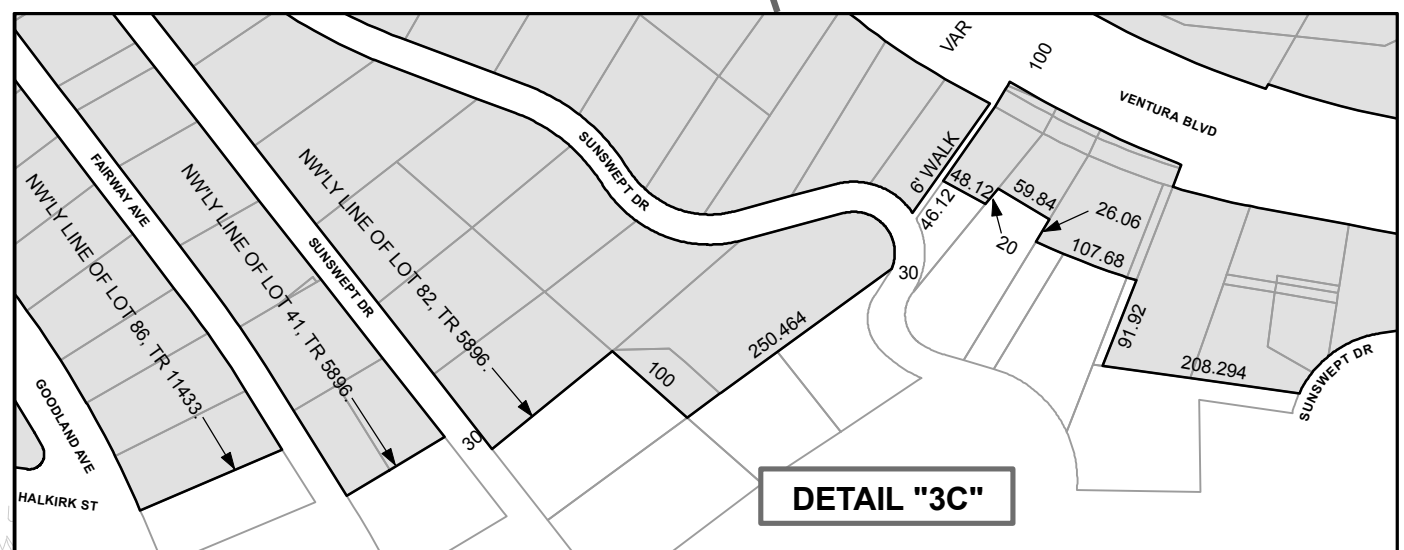
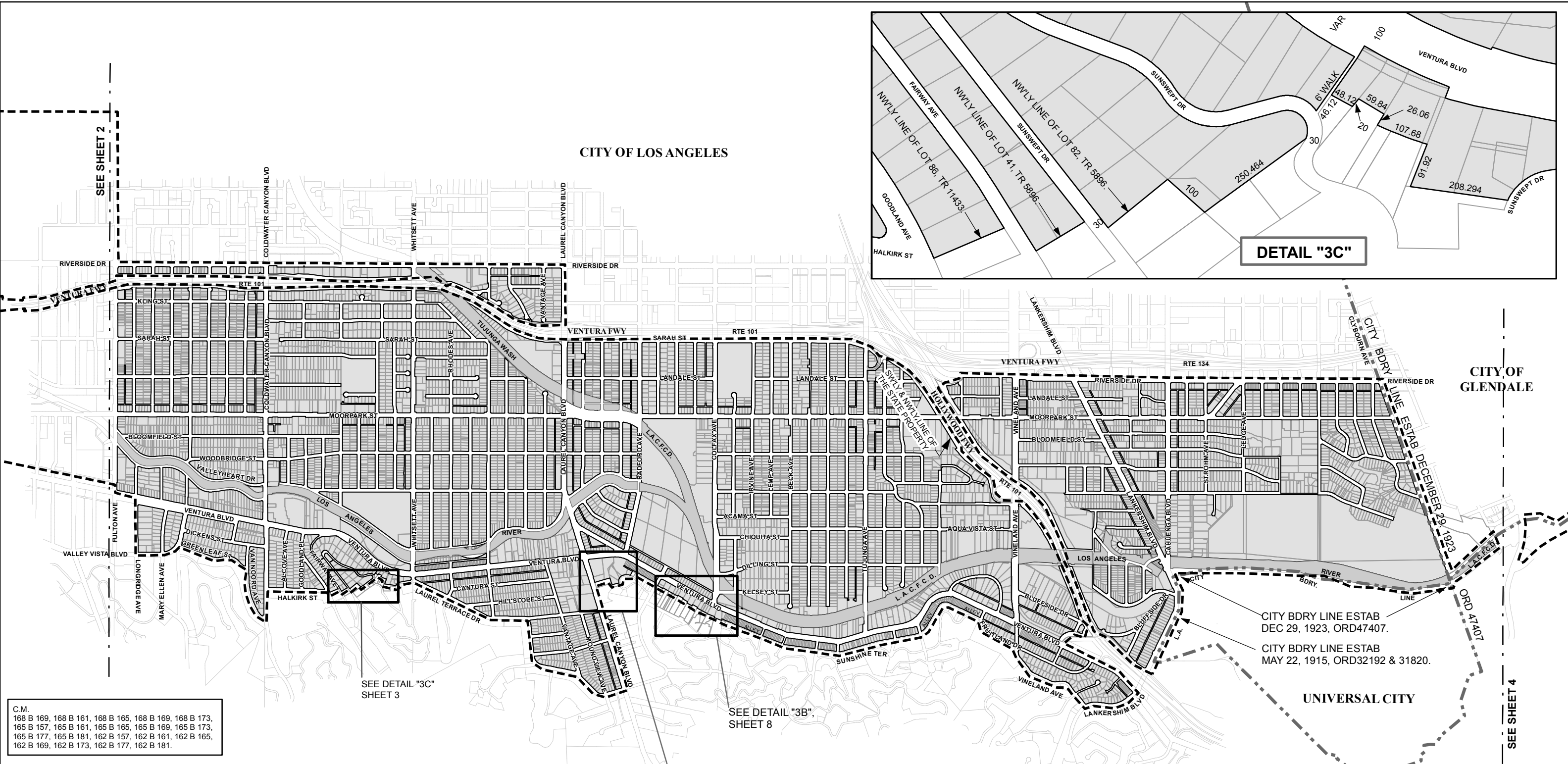
LOS ANGELES RIVER IMPROVEMENT OVERLAY (LA-RIO)

CPC-2007-3036-RIO



LH/
041114
SHEET 4 OF 9


SEE DETAIL "4A"
SHEET 8



C.M.
 168 B 169, 168 B 161, 168 B 165, 168 B 169, 168 B 173,
 165 B 157, 165 B 161, 165 B 165, 165 B 169, 165 B 173,
 165 B 177, 165 B 181, 162 B 157, 162 B 161, 162 B 165,
 162 B 169, 162 B 173, 162 B 177, 162 B 181.

ALL ZONING AND HEIGHT DISTRICTS IN THE AFFECTED AREA REMAIN THE SAME. SUFFIX **-RIO** WAS ADDED BECAUSE THE AREA IS NOW INCLUDED IN THE LOS ANGELES RIVER IMPROVEMENT OVERLAY (LA-RIO), CPC 2007-3036-RIO. ALL BOUNDARIES FOLLOW EXISTING ZONES, EXCEPT WHERE NOTED OR DIMENSIONED. FREEWAY RIGHT OF WAY ARE NOT A PART OF THIS RIO OVERLAY.

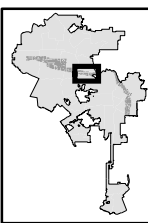
- RIO**
- LOS ANGELES RIVER IMPROVEMENT OVERLAY DISTRICT BOUNDARY**
- CITY BOUNDARY**



LOS ANGELES RIVER IMPROVEMENT OVERLAY (LA-RIO)

CPC-2007-3036-RIO

LH/LL 041114 SHEET 3 OF 9



DETAIL "3C"

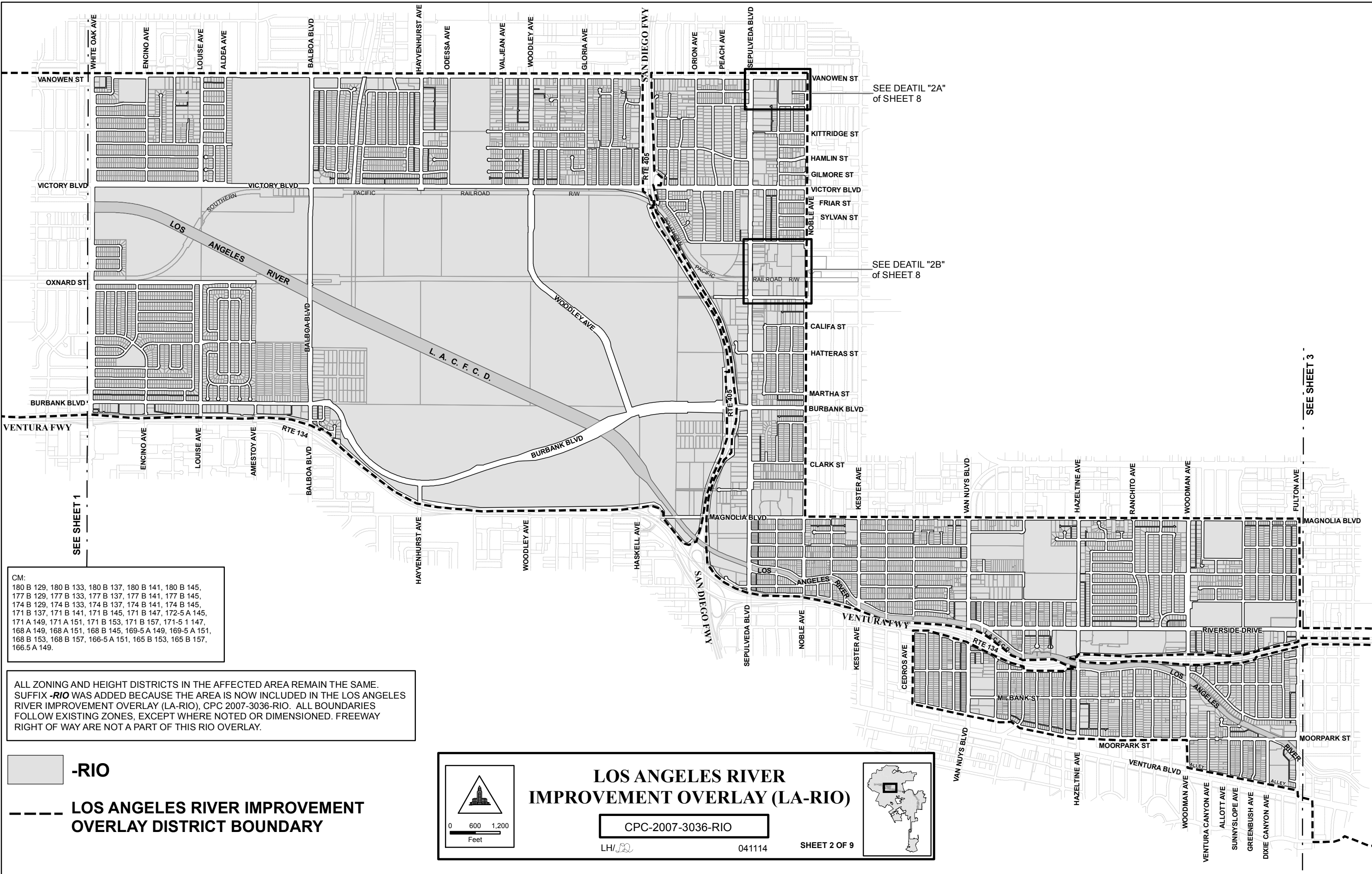
SEE DETAIL "3C" SHEET 3

SEE DETAIL "3B", SHEET 8

SEE DETAIL "3A", SHEET 8

CITY BDRY LINE ESTAB DEC 29, 1923, ORD 47407.
 CITY BDRY LINE ESTAB MAY 22, 1915, ORD 31292 & 31820.

SEE SHEET 4



SEE DEATIL "2A"
of SHEET 8

SEE DEATIL "2B"
of SHEET 8

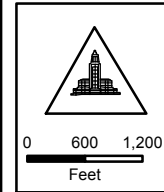
SEE SHEET 3

CM:
180 B 129, 180 B 133, 180 B 137, 180 B 141, 180 B 145,
177 B 129, 177 B 133, 177 B 137, 177 B 141, 177 B 145,
174 B 129, 174 B 133, 174 B 137, 174 B 141, 174 B 145,
171 B 137, 171 B 141, 171 B 145, 171 B 147, 172-5 A 145,
171 A 149, 171 A 151, 171 B 153, 171 B 157, 171-5 1 147,
168 A 149, 168 A 151, 168 B 145, 169-5 A 149, 169-5 A 151,
168 B 153, 168 B 157, 166-5 A 151, 165 B 153, 165 B 157,
166.5 A 149.

ALL ZONING AND HEIGHT DISTRICTS IN THE AFFECTED AREA REMAIN THE SAME. SUFFIX **-RIO** WAS ADDED BECAUSE THE AREA IS NOW INCLUDED IN THE LOS ANGELES RIVER IMPROVEMENT OVERLAY (LA-RIO), CPC 2007-3036-RIO. ALL BOUNDARIES FOLLOW EXISTING ZONES, EXCEPT WHERE NOTED OR DIMENSIONED. FREEWAY RIGHT OF WAY ARE NOT A PART OF THIS RIO OVERLAY.

 **-RIO**

 **LOS ANGELES RIVER IMPROVEMENT OVERLAY DISTRICT BOUNDARY**



LOS ANGELES RIVER IMPROVEMENT OVERLAY (LA-RIO)

CPC-2007-3036-RIO

LH/LL 041114 SHEET 2 OF 9

