


CM:  
 174 B 125, 174 B 125, 177 B 113, 177 B 117, 177 B 121, 177 B 125, 177 B 129,  
 180 B 101, 180 B 105, 180 B 109, 180 B 113, 180 B 117, 180 B 121, 180 B 125,  
 180 B 129, 183 B 101, 183 B 106, 183 B 109, 183 B 113, 183 B 117, 183 B 121,  
 183 B 125.

ALL ZONING AND HEIGHT DISTRICTS IN THE AFFECTED AREA REMAIN THE SAME.  
 SUFFIX -RIO WAS ADDED BECAUSE THE AREA IS NOW INCLUDED IN THE LOS ANGELES  
 RIVER IMPROVEMENT OVERLAY (LA-RIO), CPC 2007-3036-RIO. ALL BOUNDARIES  
 FOLLOW EXISTING ZONES, EXCEPT WHERE NOTED OR DIMENSIONED. FREEWAY  
 RIGHT OF WAY ARE NOT A PART OF THIS RIO OVERLAY.

-RIO  
 LOS ANGELES RIVER IMPROVEMENT OVERLAY DISTRICT BOUNDARY

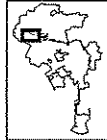


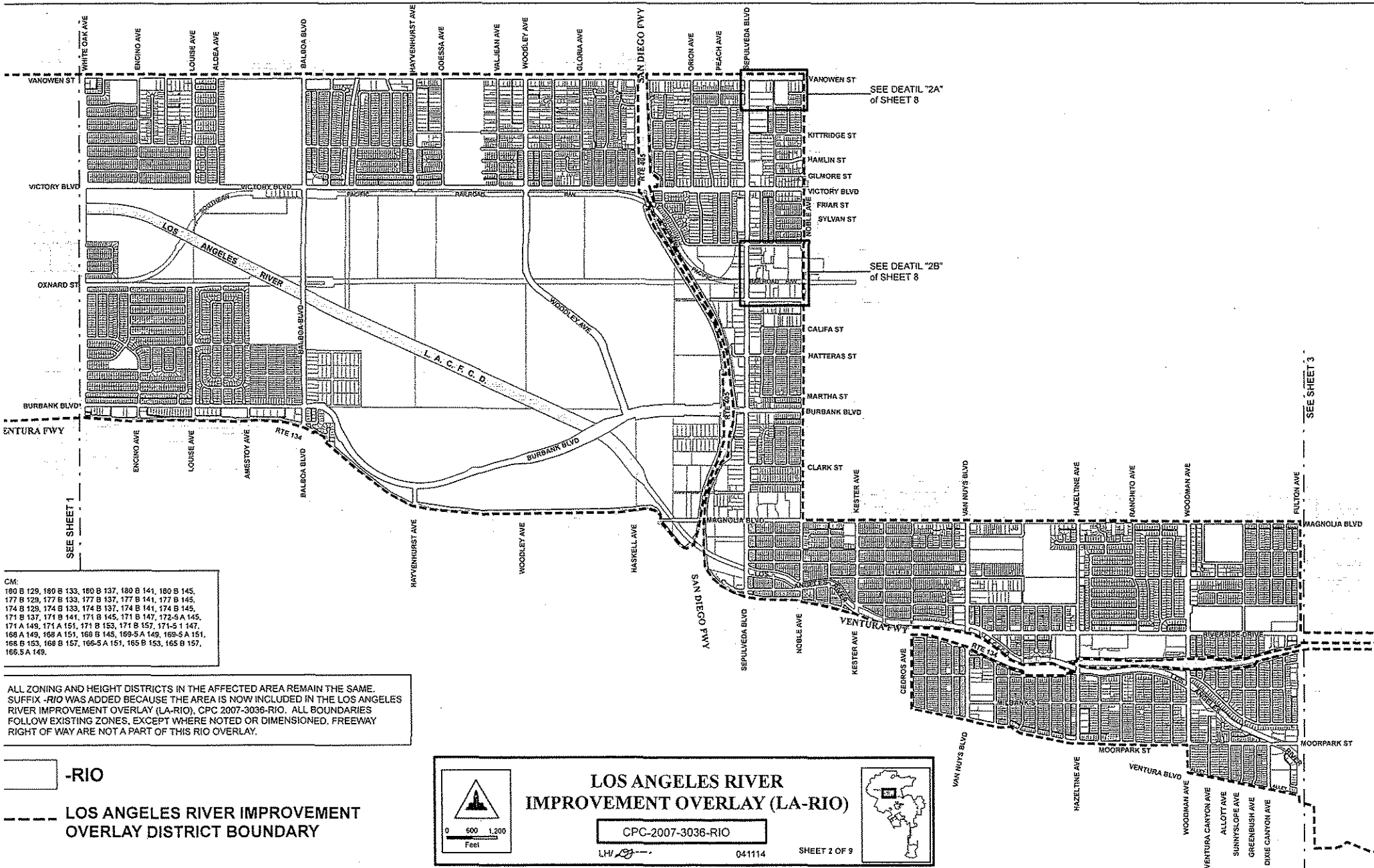
0 500 1,000  
Feet

### LOS ANGELES RIVER IMPROVEMENT OVERLAY (LA-RIO)

CPC-2007-3036-RIO

LH100 041114 SHEET 1 OF 9

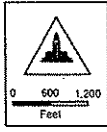




CM:  
 180 B 129, 180 B 133, 180 B 137, 180 B 141, 180 B 145,  
 177 B 129, 177 B 133, 177 B 137, 177 B 141, 177 B 145,  
 174 B 129, 174 B 133, 174 B 137, 174 B 141, 174 B 145,  
 171 B 137, 171 B 141, 171 B 145, 171 B 147, 172-S A 145,  
 174 A 149, 174 A 151, 171 B 153, 171 B 157, 171-S 1 147,  
 166 A 149, 166 A 151, 166 B 145, 169-S A 149, 169-S A 151,  
 166 B 153, 166 B 157, 166-S A 151, 165 B 153, 165 B 157,  
 166-S A 149.

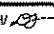
ALL ZONING AND HEIGHT DISTRICTS IN THE AFFECTED AREA REMAIN THE SAME. SUFFIX -RIO WAS ADDED BECAUSE THE AREA IS NOW INCLUDED IN THE LOS ANGELES RIVER IMPROVEMENT OVERLAY (LA-RIO), CPC 2007-3036-RIO. ALL BOUNDARIES FOLLOW EXISTING ZONES, EXCEPT WHERE NOTED OR DIMENSIONED. FREEWAY RIGHT OF WAY ARE NOT A PART OF THIS RIO OVERLAY.


-RIO  
 LOS ANGELES RIVER IMPROVEMENT OVERLAY DISTRICT BOUNDARY



## LOS ANGELES RIVER IMPROVEMENT OVERLAY (LA-RIO)

CPC-2007-3036-RIO

LHI  041114 SHEET 2 OF 9

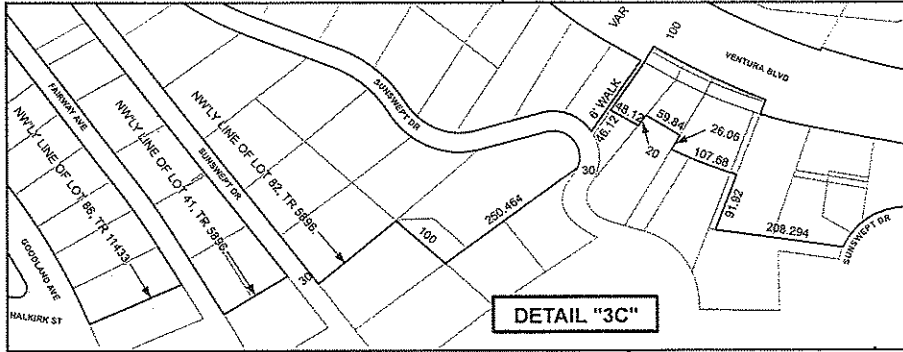
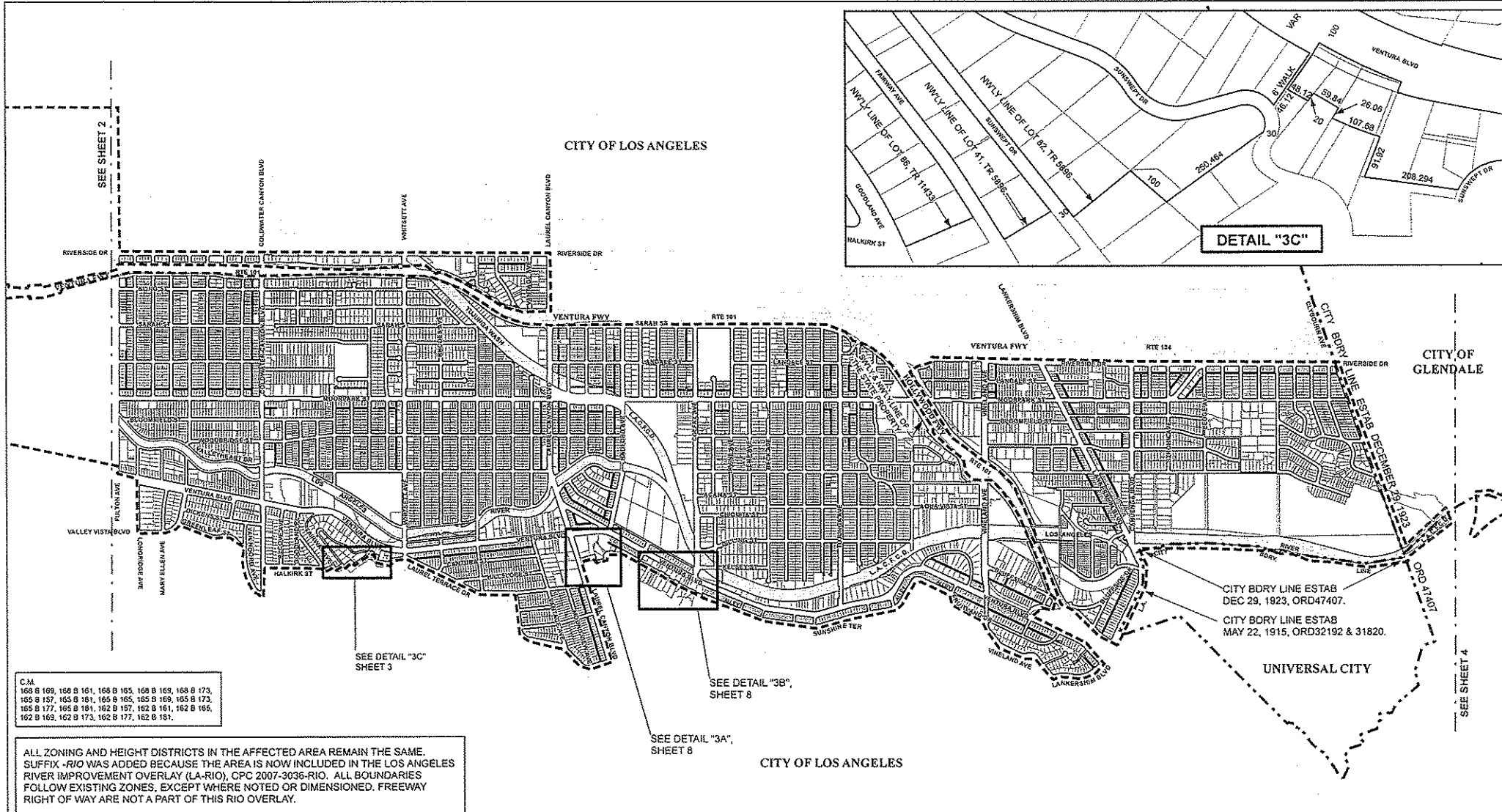


SEE DETAIL "2A"  
of SHEET 8

SEE DETAIL "2B"  
of SHEET 8

SEE SHEET 3

SEE SHEET 1



C.M.  
 168 B 169, 166 B 161, 168 B 165, 169 B 169, 168 B 173,  
 165 B 157, 165 B 161, 165 B 165, 165 B 169, 165 B 173,  
 165 B 177, 165 B 181, 162 B 157, 162 B 161, 162 B 165,  
 162 B 169, 162 B 173, 162 B 177, 162 B 181.

ALL ZONING AND HEIGHT DISTRICTS IN THE AFFECTED AREA REMAIN THE SAME. SUFFIX -RIO WAS ADDED BECAUSE THE AREA IS NOW INCLUDED IN THE LOS ANGELES RIVER IMPROVEMENT OVERLAY (LA-RIO), CPC 2007-3036-RIO. ALL BOUNDARIES FOLLOW EXISTING ZONES, EXCEPT WHERE NOTED OR DIMENSIONED. FREEWAY RIGHT OF WAY ARE NOT A PART OF THIS RIO OVERLAY.

- RIO
- LOS ANGELES RIVER IMPROVEMENT OVERLAY DISTRICT BOUNDARY
- CITY BOUNDARY

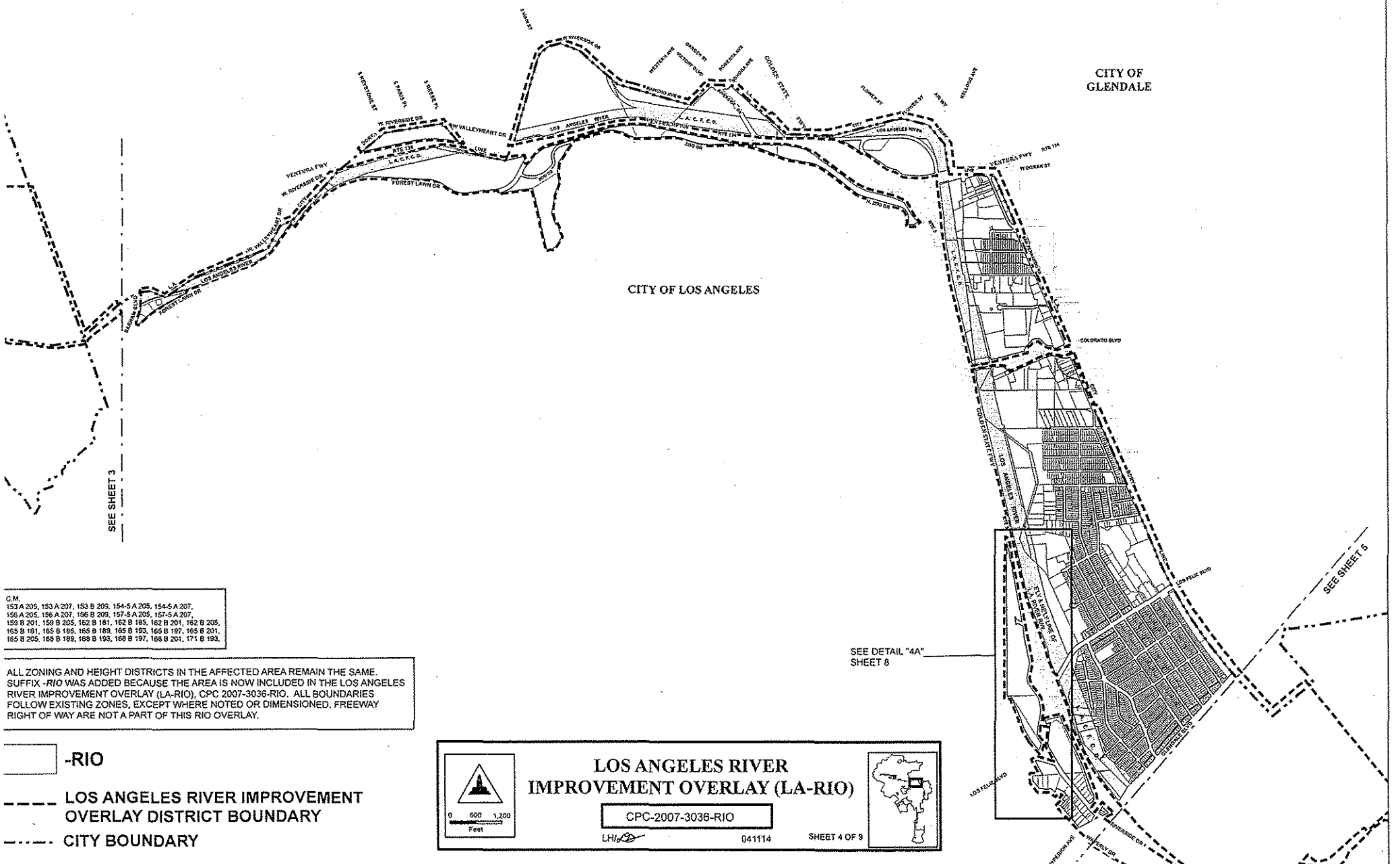
## LOS ANGELES RIVER IMPROVEMENT OVERLAY (LA-RIO)

CPC-2007-3036-RIO

LHI/AD 041114 SHEET 3 OF 9

CITY OF  
GLENDALE

CITY OF LOS ANGELES






SEE SHEET 3


SEE SHEET 5

SEE DETAIL "4A"  
SHEET 8

C.M.  
153 A 205, 153 A 207, 153 B 209, 154-5 A 205, 154-5 A 207,  
156 A 205, 156 A 207, 156 B 209, 157-5 A 205, 157-5 A 207,  
159 B 201, 159 B 205, 162 B 181, 162 B 185, 162 B 201, 162 B 205,  
165 B 191, 165 B 195, 165 B 189, 166 B 193, 166 B 197, 166 B 201,  
166 B 205, 168 B 189, 168 B 193, 168 B 197, 168 B 201, 171 B 193.

ALL ZONING AND HEIGHT DISTRICTS IN THE AFFECTED AREA REMAIN THE SAME. SUFFIX -RIO WAS ADDED BECAUSE THE AREA IS NOW INCLUDED IN THE LOS ANGELES RIVER IMPROVEMENT OVERLAY (LA-RIO), CPC 2007-3036-RIO. ALL BOUNDARIES FOLLOW EXISTING ZONES, EXCEPT WHERE NOTED OR DIMENSIONED. FREEWAY RIGHT OF WAY ARE NOT A PART OF THIS RIO OVERLAY.

-  -RIO
-  LOS ANGELES RIVER IMPROVEMENT OVERLAY DISTRICT BOUNDARY
-  CITY BOUNDARY

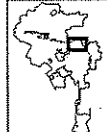


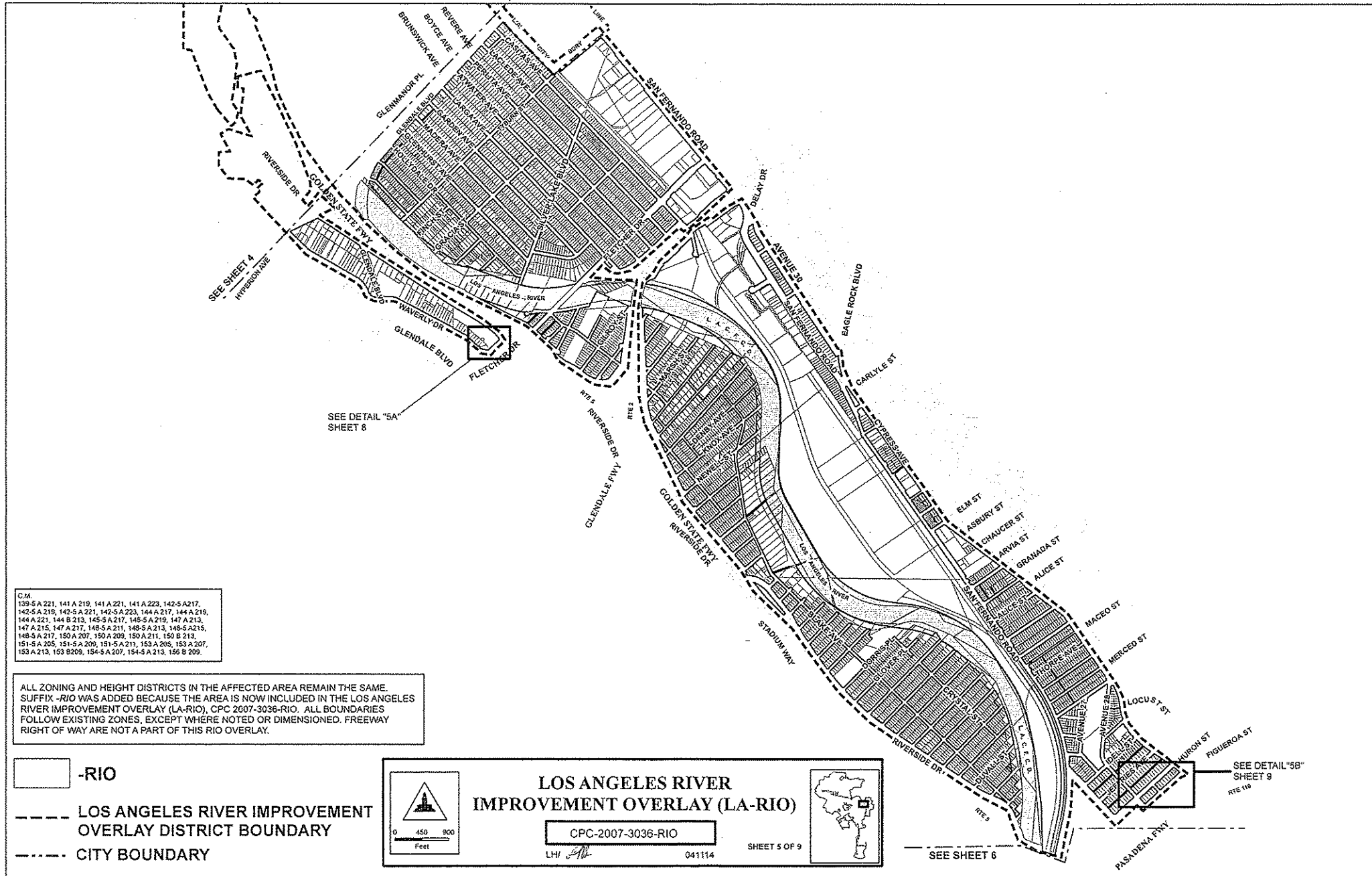
0 600 1,200  
Feet

**LOS ANGELES RIVER  
IMPROVEMENT OVERLAY (LA-RIO)**

CPC-2007-3036-RIO


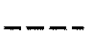

LH/LP 041114 SHEET 4 OF 9

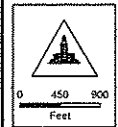




C.M.  
 139-5 A 221, 141 A 219, 141 A 221, 141 A 223, 142-5 A 217,  
 142-5 A 219, 142-5 A 221, 142-5 A 223, 144 A 217, 144 A 219,  
 144 A 221, 144 B 213, 145-5 A 217, 145-5 A 219, 147 A 213,  
 147 A 215, 147 A 217, 148-5 A 211, 148-5 A 213, 148-5 A 215,  
 148-5 A 217, 150 A 207, 150 A 209, 150 A 211, 150 B 213,  
 151-5 A 205, 151-5 A 209, 151-5 A 213, 153 A 205, 153 A 207,  
 153 A 213, 153 B 209, 154-5 A 207, 154-5 A 213, 156 B 209.

ALL ZONING AND HEIGHT DISTRICTS IN THE AFFECTED AREA REMAIN THE SAME. SUFFIX -RIO WAS ADDED BECAUSE THE AREA IS NOW INCLUDED IN THE LOS ANGELES RIVER IMPROVEMENT OVERLAY (LA-RIO), CPC 2007-3036-RIO. ALL BOUNDARIES FOLLOW EXISTING ZONES, EXCEPT WHERE NOTED OR DIMENSIONED. FREEWAY RIGHT OF WAY ARE NOT A PART OF THIS RIO OVERLAY.

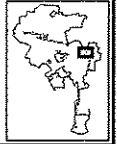
-  -RIO
-  LOS ANGELES RIVER IMPROVEMENT OVERLAY DISTRICT BOUNDARY
-  CITY BOUNDARY



**LOS ANGELES RIVER  
 IMPROVEMENT OVERLAY (LA-RIO)**

CPC-2007-3036-RIO

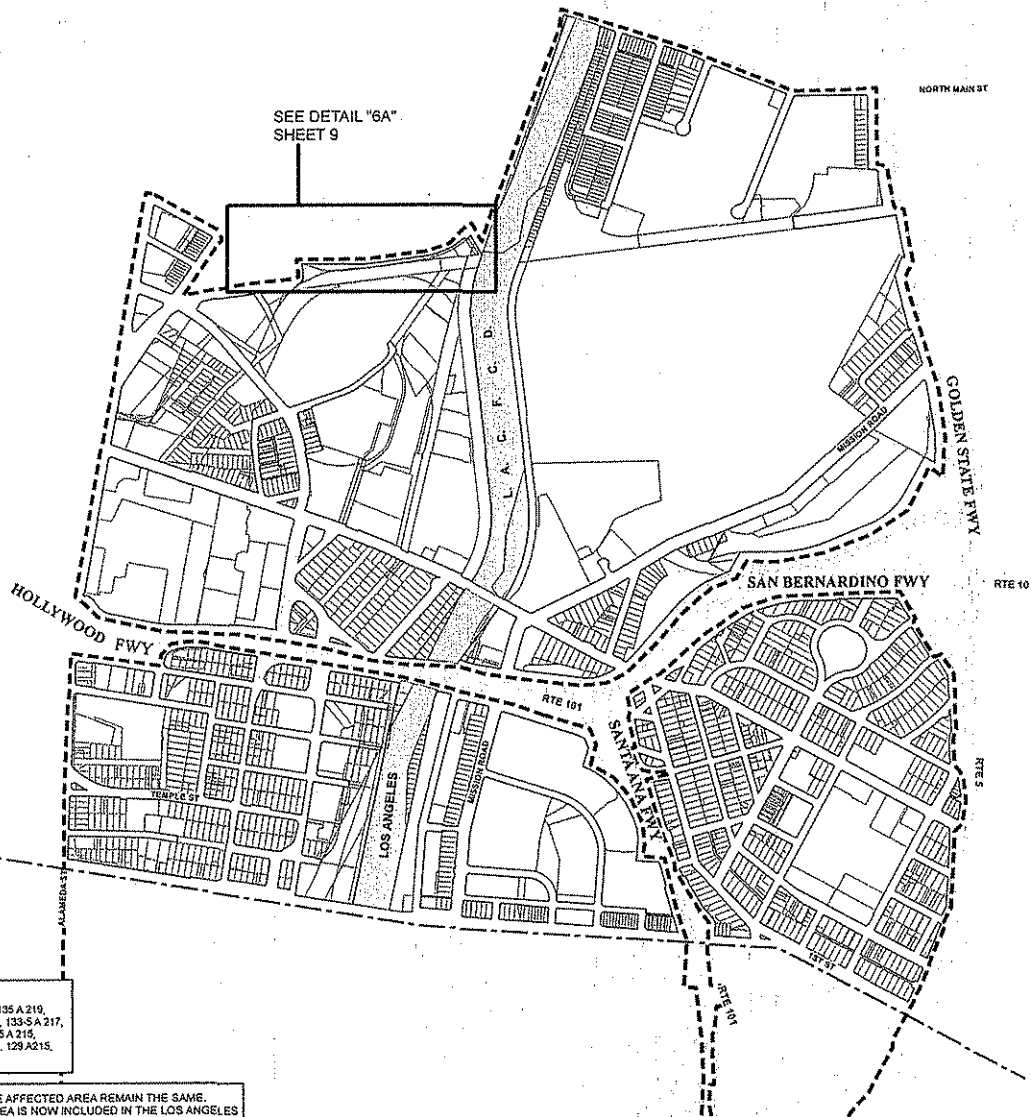
LHJ *[Signature]* 041114 SHEET 5 OF 9



SEE SHEET 6

SEE DETAIL "58" SHEET 9

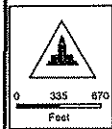
RT# 116



C.M.  
 136-5 A 219, 136-5 A 221, 135 A215, 135 A 217, 135 A 219,  
 135 A 221, 135-5 A 219, 133-5 A 217, 133-5 A 219, 133-5 A 217,  
 132 A 215, 132 A 217, 132 A 219, 132 A 221, 130-5 A 215,  
 130-5 A 217, 130-5 A 219, 130-5 A 221, 130-5 A 223, 129 A215,  
 129 A 217, 129 A 219, 129 A 224.

ALL ZONING AND HEIGHT DISTRICTS IN THE AFFECTED AREA REMAIN THE SAME. SUFFIX -RIO WAS ADDED BECAUSE THE AREA IS NOW INCLUDED IN THE LOS ANGELES RIVER IMPROVEMENT OVERLAY (LA-RIO), CPC 2007-3036-RIO. ALL BOUNDARIES FOLLOW EXISTING ZONES, EXCEPT WHERE NOTED OR DIMENSIONED. FREEWAY RIGHT OF WAY ARE NOT A PART OF THIS RIO OVERLAY.

 -RIO  
 LOS ANGELES RIVER IMPROVEMENT OVERLAY DISTRICT BOUNDARY



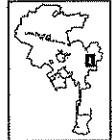
**LOS ANGELES RIVER  
 IMPROVEMENT OVERLAY (LA-RIO)**

CPC-2007-3036-RIO

LH/cf

041114

SHEET 6 OF 9





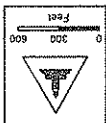
SHEET 7 OF 9

041114

CPC-2007-3036-RIO

LH/DP

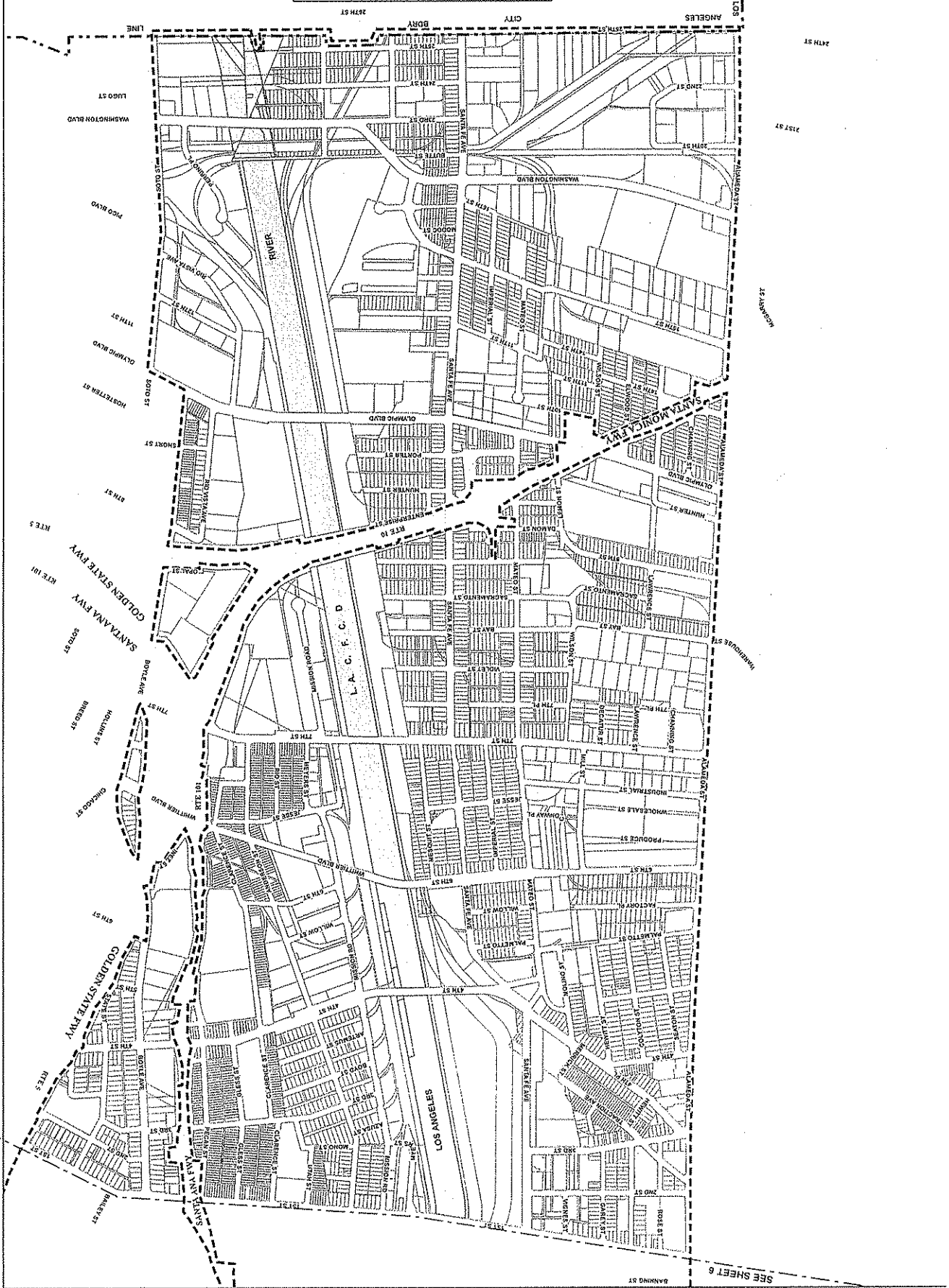
# LOS ANGELES RIVER IMPROVEMENT OVERLAY (LA-RIO)



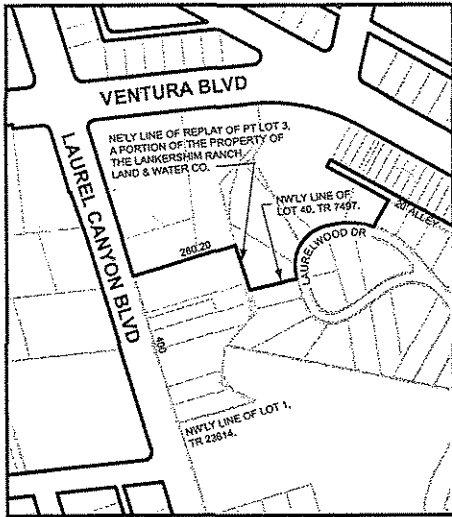
- RIO
- - - - - City Boundary
- - - - - OVERLAY DISTRICT BOUNDARY
- - - - - LOS ANGELES RIVER IMPROVEMENT

ALL ZONING AND HEIGHT DISTRICTS IN THE AFFECTED AREA REMAIN THE SAME.  
 SUFFIX #10 WAS ADDED BECAUSE THE AREA IS NOW INCLUDED IN THE LOS ANGELES  
 RIVER IMPROVEMENT OVERLAY (LA-RIO). CPC 2007-3036-RIO, ALL BOUNDARIES  
 FOLLOW EXISTING ZONES, EXCEPT WHERE NOTED OR DIMENSIONED. FREEWAY  
 RIGHT OF WAY ARE NOT A PART OF THIS RIO OVERLAY.

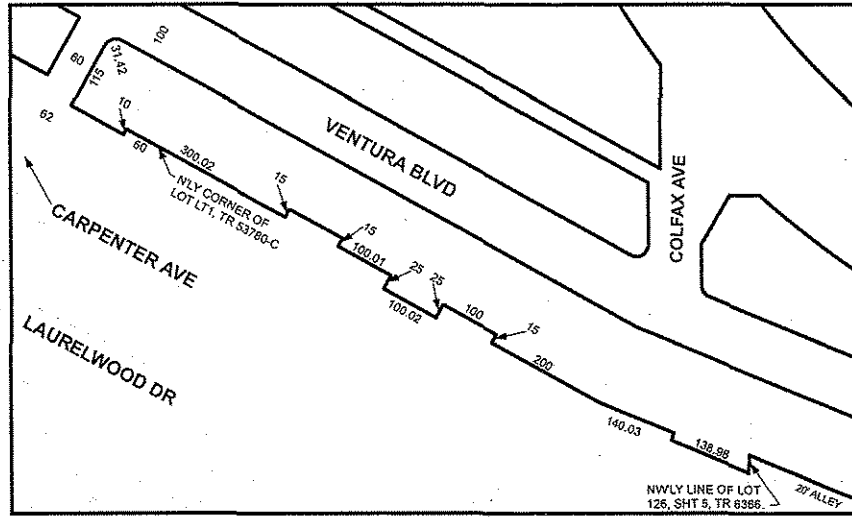
C.M.  
 128 A 215, 128 A 217, 128 A 219, 129 A 221, 127 A 215, 127 A 217,  
 127 A 219, 128 A 221, 128 A 217, 128 A 219, 128 A 221, 128 A 217,  
 128 A 219, 128 A 221, 128 A 217, 128 A 219, 128 A 221, 128 A 217,  
 128 A 219, 128 A 221, 128 A 217, 128 A 219, 128 A 221, 128 A 217,  
 128 A 219, 128 A 221, 128 A 217, 128 A 219, 128 A 221, 128 A 217,  
 128 A 219, 128 A 221, 128 A 217, 128 A 219, 128 A 221, 128 A 217,  
 128 A 219, 128 A 221, 128 A 217, 128 A 219, 128 A 221, 128 A 217,  
 128 A 219, 128 A 221, 128 A 217, 128 A 219, 128 A 221, 128 A 217,  
 128 A 219, 128 A 221, 128 A 217, 128 A 219, 128 A 221, 128 A 217,



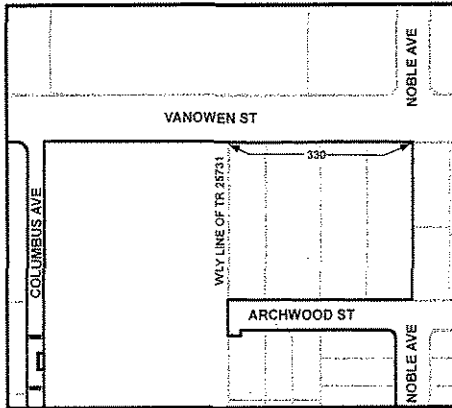
SEE SHEET 6



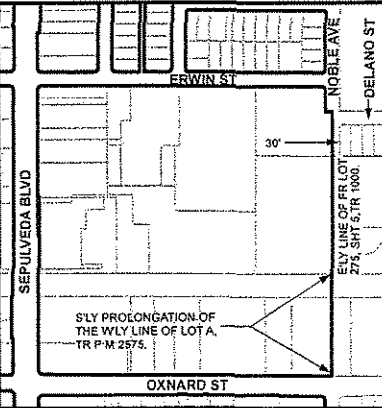
DETAIL "3A"



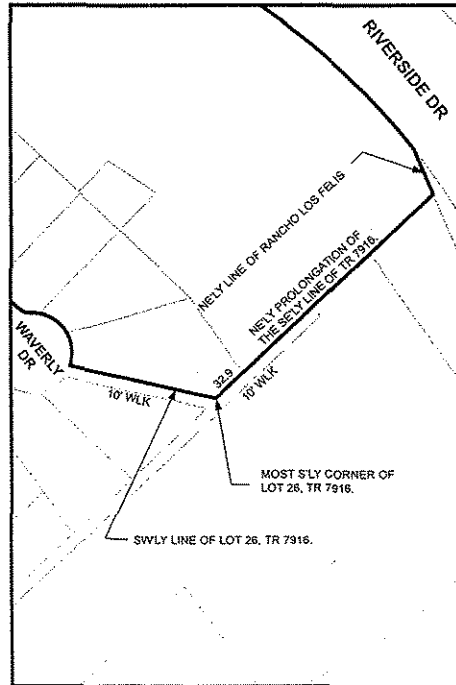
DETAIL "3B"



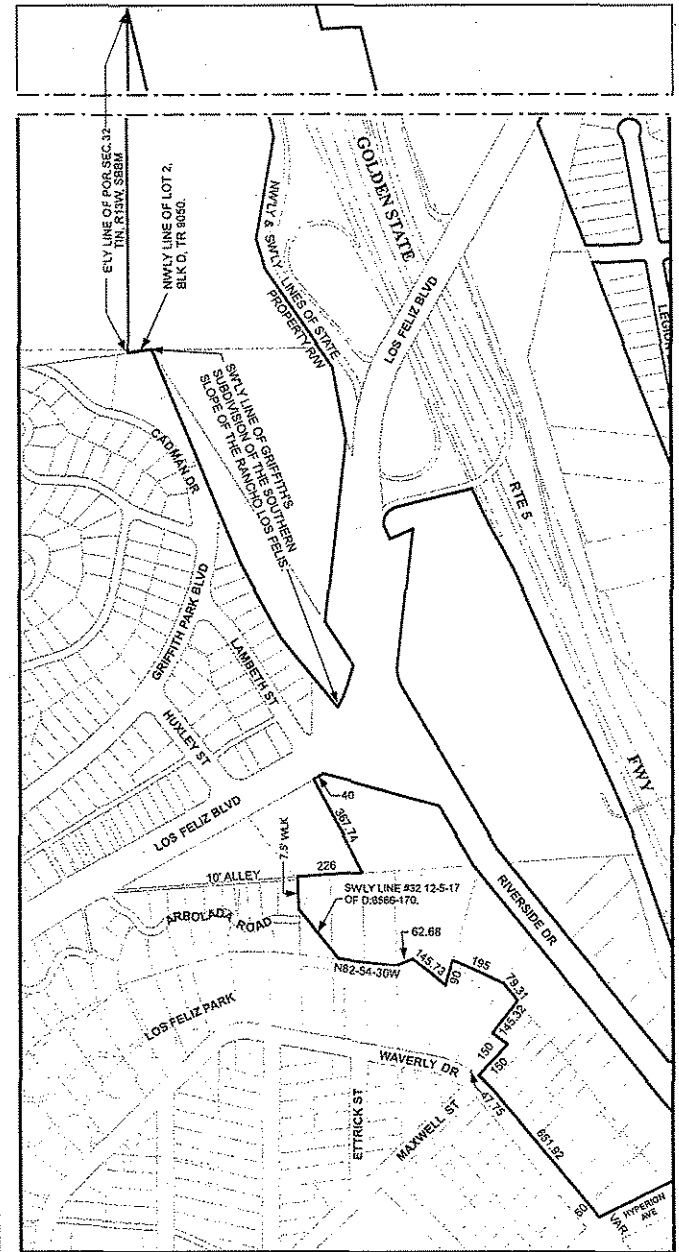
DETAIL "2A"



DETAIL "2B"




DETAIL "5A"



DETAIL "4A"

ALL ZONING AND HEIGHT DISTRICTS IN THE AFFECTED AREA REMAIN THE SAME. SUFFIX -RIO WAS ADDED BECAUSE THE AREA IS NOW INCLUDED IN THE LOS ANGELES RIVER IMPROVEMENT OVERLAY (LA-RIO), CPC 2007-3036-RIO. ALL BOUNDARIES FOLLOW EXISTING ZONES, EXCEPT WHERE NOTED OR DIMENSIONED. FREEWAY RIGHT OF WAY ARE NOT A PART OF THIS RIO OVERLAY.

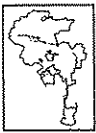
C.M.  
153 A 205, 154-A 203, 154-9 A 205, 156 B 204, 159 B 201,  
155 A 205, 150 B 209, 163 B 165, 162 B 169, 162 B 163,  
168 B 161, 169 B 145, 177 B 145



**LOS ANGELES RIVER  
IMPROVEMENT OVERLAY (LA-RIO)**

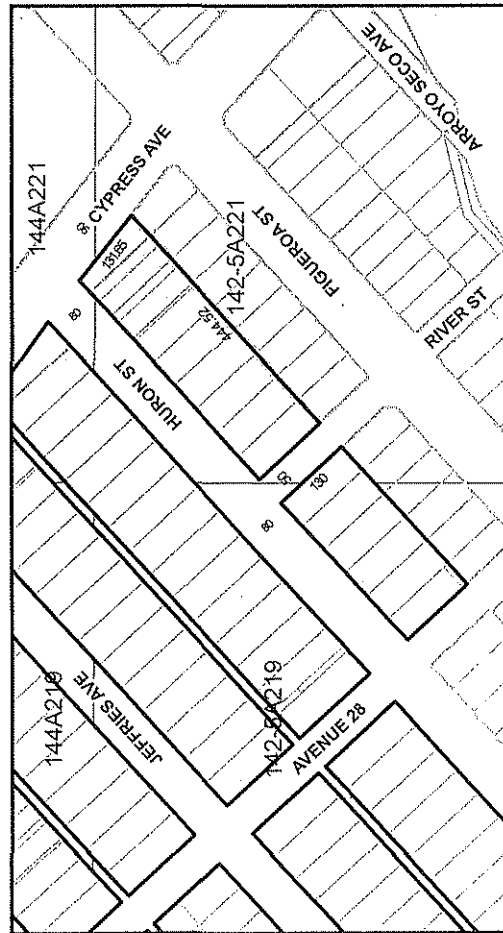
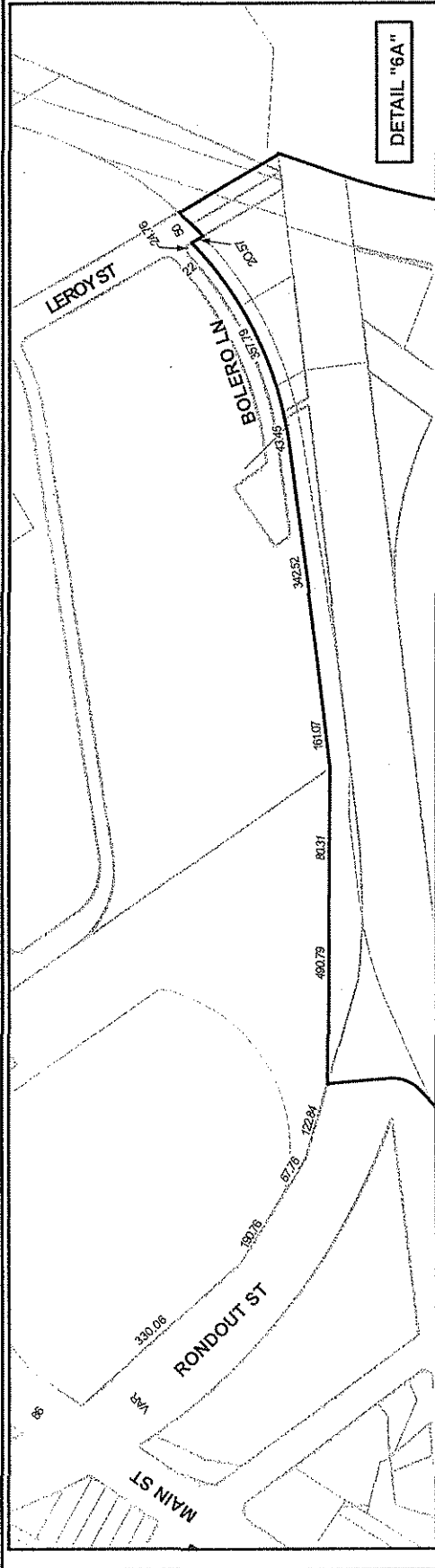
CPC-2007-3036-RIO

SHEET 8 OF 9



LHD 040814





C.M. 144A216, 144A217, 144A218, 144A219, 144A220, 144A221, 144A222, 144A223, 144A224, 144A225, 144A226, 144A227, 144A228, 144A229, 144A230, 144A231, 144A232, 144A233, 144A234, 144A235, 144A236, 144A237, 144A238, 144A239, 144A240, 144A241, 144A242, 144A243, 144A244, 144A245, 144A246, 144A247, 144A248, 144A249, 144A250, 144A251, 144A252, 144A253, 144A254, 144A255, 144A256, 144A257, 144A258, 144A259, 144A260, 144A261, 144A262, 144A263, 144A264, 144A265, 144A266, 144A267, 144A268, 144A269, 144A270, 144A271, 144A272, 144A273, 144A274, 144A275, 144A276, 144A277, 144A278, 144A279, 144A280, 144A281, 144A282, 144A283, 144A284, 144A285, 144A286, 144A287, 144A288, 144A289, 144A290, 144A291, 144A292, 144A293, 144A294, 144A295, 144A296, 144A297, 144A298, 144A299, 144A300, 144A301, 144A302, 144A303, 144A304, 144A305, 144A306, 144A307, 144A308, 144A309, 144A310, 144A311, 144A312, 144A313, 144A314, 144A315, 144A316, 144A317, 144A318, 144A319, 144A320, 144A321, 144A322, 144A323, 144A324, 144A325, 144A326, 144A327, 144A328, 144A329, 144A330, 144A331, 144A332, 144A333, 144A334, 144A335, 144A336, 144A337, 144A338, 144A339, 144A340, 144A341, 144A342, 144A343, 144A344, 144A345, 144A346, 144A347, 144A348, 144A349, 144A350, 144A351, 144A352, 144A353, 144A354, 144A355, 144A356, 144A357, 144A358, 144A359, 144A360, 144A361, 144A362, 144A363, 144A364, 144A365, 144A366, 144A367, 144A368, 144A369, 144A370, 144A371, 144A372, 144A373, 144A374, 144A375, 144A376, 144A377, 144A378, 144A379, 144A380, 144A381, 144A382, 144A383, 144A384, 144A385, 144A386, 144A387, 144A388, 144A389, 144A390, 144A391, 144A392, 144A393, 144A394, 144A395, 144A396, 144A397, 144A398, 144A399, 144A400, 144A401, 144A402, 144A403, 144A404, 144A405, 144A406, 144A407, 144A408, 144A409, 144A410, 144A411, 144A412, 144A413, 144A414, 144A415, 144A416, 144A417, 144A418, 144A419, 144A420, 144A421, 144A422, 144A423, 144A424, 144A425, 144A426, 144A427, 144A428, 144A429, 144A430, 144A431, 144A432, 144A433, 144A434, 144A435, 144A436, 144A437, 144A438, 144A439, 144A440, 144A441, 144A442, 144A443, 144A444, 144A445, 144A446, 144A447, 144A448, 144A449, 144A450, 144A451, 144A452, 144A453, 144A454, 144A455, 144A456, 144A457, 144A458, 144A459, 144A460, 144A461, 144A462, 144A463, 144A464, 144A465, 144A466, 144A467, 144A468, 144A469, 144A470, 144A471, 144A472, 144A473, 144A474, 144A475, 144A476, 144A477, 144A478, 144A479, 144A480, 144A481, 144A482, 144A483, 144A484, 144A485, 144A486, 144A487, 144A488, 144A489, 144A490, 144A491, 144A492, 144A493, 144A494, 144A495, 144A496, 144A497, 144A498, 144A499, 144A500, 144A501, 144A502, 144A503, 144A504, 144A505, 144A506, 144A507, 144A508, 144A509, 144A510, 144A511, 144A512, 144A513, 144A514, 144A515, 144A516, 144A517, 144A518, 144A519, 144A520, 144A521, 144A522, 144A523, 144A524, 144A525, 144A526, 144A527, 144A528, 144A529, 144A530, 144A531, 144A532, 144A533, 144A534, 144A535, 144A536, 144A537, 144A538, 144A539, 144A540, 144A541, 144A542, 144A543, 144A544, 144A545, 144A546, 144A547, 144A548, 144A549, 144A550, 144A551, 144A552, 144A553, 144A554, 144A555, 144A556, 144A557, 144A558, 144A559, 144A560, 144A561, 144A562, 144A563, 144A564, 144A565, 144A566, 144A567, 144A568, 144A569, 144A570, 144A571, 144A572, 144A573, 144A574, 144A575, 144A576, 144A577, 144A578, 144A579, 144A580, 144A581, 144A582, 144A583, 144A584, 144A585, 144A586, 144A587, 144A588, 144A589, 144A590, 144A591, 144A592, 144A593, 144A594, 144A595, 144A596, 144A597, 144A598, 144A599, 144A600, 144A601, 144A602, 144A603, 144A604, 144A605, 144A606, 144A607, 144A608, 144A609, 144A610, 144A611, 144A612, 144A613, 144A614, 144A615, 144A616, 144A617, 144A618, 144A619, 144A620, 144A621, 144A622, 144A623, 144A624, 144A625, 144A626, 144A627, 144A628, 144A629, 144A630, 144A631, 144A632, 144A633, 144A634, 144A635, 144A636, 144A637, 144A638, 144A639, 144A640, 144A641, 144A642, 144A643, 144A644, 144A645, 144A646, 144A647, 144A648, 144A649, 144A650, 144A651, 144A652, 144A653, 144A654, 144A655, 144A656, 144A657, 144A658, 144A659, 144A660, 144A661, 144A662, 144A663, 144A664, 144A665, 144A666, 144A667, 144A668, 144A669, 144A670, 144A671, 144A672, 144A673, 144A674, 144A675, 144A676, 144A677, 144A678, 144A679, 144A680, 144A681, 144A682, 144A683, 144A684, 144A685, 144A686, 144A687, 144A688, 144A689, 144A690, 144A691, 144A692, 144A693, 144A694, 144A695, 144A696, 144A697, 144A698, 144A699, 144A700, 144A701, 144A702, 144A703, 144A704, 144A705, 144A706, 144A707, 144A708, 144A709, 144A710, 144A711, 144A712, 144A713, 144A714, 144A715, 144A716, 144A717, 144A718, 144A719, 144A720, 144A721, 144A722, 144A723, 144A724, 144A725, 144A726, 144A727, 144A728, 144A729, 144A730, 144A731, 144A732, 144A733, 144A734, 144A735, 144A736, 144A737, 144A738, 144A739, 144A740, 144A741, 144A742, 144A743, 144A744, 144A745, 144A746, 144A747, 144A748, 144A749, 144A750, 144A751, 144A752, 144A753, 144A754, 144A755, 144A756, 144A757, 144A758, 144A759, 144A760, 144A761, 144A762, 144A763, 144A764, 144A765, 144A766, 144A767, 144A768, 144A769, 144A770, 144A771, 144A772, 144A773, 144A774, 144A775, 144A776, 144A777, 144A778, 144A779, 144A780, 144A781, 144A782, 144A783, 144A784, 144A785, 144A786, 144A787, 144A788, 144A789, 144A790, 144A791, 144A792, 144A793, 144A794, 144A795, 144A796, 144A797, 144A798, 144A799, 144A800, 144A801, 144A802, 144A803, 144A804, 144A805, 144A806, 144A807, 144A808, 144A809, 144A810, 144A811, 144A812, 144A813, 144A814, 144A815, 144A816, 144A817, 144A818, 144A819, 144A820, 144A821, 144A822, 144A823, 144A824, 144A825, 144A826, 144A827, 144A828, 144A829, 144A830, 144A831, 144A832, 144A833, 144A834, 144A835, 144A836, 144A837, 144A838, 144A839, 144A840, 144A841, 144A842, 144A843, 144A844, 144A845, 144A846, 144A847, 144A848, 144A849, 144A850, 144A851, 144A852, 144A853, 144A854, 144A855, 144A856, 144A857, 144A858, 144A859, 144A860, 144A861, 144A862, 144A863, 144A864, 144A865, 144A866, 144A867, 144A868, 144A869, 144A870, 144A871, 144A872, 144A873, 144A874, 144A875, 144A876, 144A877, 144A878, 144A879, 144A880, 144A881, 144A882, 144A883, 144A884, 144A885, 144A886, 144A887, 144A888, 144A889, 144A890, 144A891, 144A892, 144A893, 144A894, 144A895, 144A896, 144A897, 144A898, 144A899, 144A900, 144A901, 144A902, 144A903, 144A904, 144A905, 144A906, 144A907, 144A908, 144A909, 144A910, 144A911, 144A912, 144A913, 144A914, 144A915, 144A916, 144A917, 144A918, 144A919, 144A920, 144A921, 144A922, 144A923, 144A924, 144A925, 144A926, 144A927, 144A928, 144A929, 144A930, 144A931, 144A932, 144A933, 144A934, 144A935, 144A936, 144A937, 144A938, 144A939, 144A940, 144A941, 144A942, 144A943, 144A944, 144A945, 144A946, 144A947, 144A948, 144A949, 144A950, 144A951, 144A952, 144A953, 144A954, 144A955, 144A956, 144A957, 144A958, 144A959, 144A960, 144A961, 144A962, 144A963, 144A964, 144A965, 144A966, 144A967, 144A968, 144A969, 144A970, 144A971, 144A972, 144A973, 144A974, 144A975, 144A976, 144A977, 144A978, 144A979, 144A980, 144A981, 144A982, 144A983, 144A984, 144A985, 144A986, 144A987, 144A988, 144A989, 144A990, 144A991, 144A992, 144A993, 144A994, 144A995, 144A996, 144A997, 144A998, 144A999, 144A1000.

ALL ZONING AND HEIGHT DISTRICTS IN THE AFFECTED AREA REMAIN THE SAME. SUFFIX #60 WAS ADDED BECAUSE THE AREA IS NOW INCLUDED IN THE LOS ANGELES IMPROVEMENT OVERLAY (LA-RIO). EXCEPT WHERE NOTED OR OTHERWISE INDICATED, THE RIGHT OF WAY ARE NOT A PART OF THIS RIO OVERLAY.

**LOS ANGELES RIVER IMPROVEMENT OVERLAY (LA-RIO)**

CPC-2007-3036-RIO

040814

SHEET 9 OF 9