

ORDINANCE NO. 183144

An ordinance amending Section 12.04 of the Los Angeles Municipal Code to establish the Los Angeles River Improvement Overlay District and amend the zoning map accordingly.

**THE PEOPLE OF THE CITY OF LOS ANGELES
DO HEREBY ORDAIN AS FOLLOWS:**

**Section 1. ESTABLISHMENT OF THE LOS ANGELES RIVER IMPROVEMENT
OVERLAY DISTRICT.**

A. Creation of Overlay District. Pursuant to Section 13.17 of the Los Angeles Municipal Code, the City Council hereby establishes the Los Angeles River Improvement Overlay District. The provisions of this ordinance shall apply to all properties identified by being within dashed boundaries on the map and the suffix "RIO" on the zone classification. The Los Angeles River Improvement Overlay District extends from Topanga Canyon Boulevard (just west of the headwaters of the Los Angeles River) east and then south to the point at which the Los Angeles River flows out of the City of Los Angeles at 26th Street in the Boyle Heights area. Properties located in the District are identified on the map herein by dashed boundaries and the suffix "RIO" on the zone classification. All properties included in the District shall comply with the development regulations set forth in Section 13.17. F. To assist with the identification of projects along a river frontage road, the following streets are identified below:

	Street Name	N/E	S/W	Riverbank
1	Hart St	Topanga Canyon Blvd	Vassar Ave	
2	Bassett St	Owensmouth Ave	Canoga Ave	
3	Bassett St	Eton Ave	De Soto Ave	
4	Valleyheart Dr	Sepulveda Blvd	Columbus Ave	S
5	Valleyheart Dr	Sepulveda Blvd	Cedros Ave	N
6	Valleyheart Dr	Noble Ave	Kester Ave	S
7	Riverside Dr	Van Nuys Blvd	Sylmar Ave	
8	Valleyheart Dr	Hazeltine Ave	Woodman Ave	
9	Valleyheart Dr	Moorpark St	Coldwater Canyon Ave	S
10	Valleyheart Dr	Fulton Ave	Coldwater Canyon Ave	N
11	Valleyheart Dr	Alcove Ave	Bellaire Ave	N
12	Valleyheart Dr	(Terminus)	Whitsett Ave	S
13	Valleyheart Dr	Whitsett Ave	Radford Ave	N
14	Valleyheart Dr	Laurel Canyon Blvd	Radford Ave	S

B. Zoning Map. Section 12.04 of the Los Angeles Municipal Code is hereby amended by changing the zone classification of properties shown upon a portion of the Zoning Map incorporated therein and made a part of Article 2, Chapter 1, of the LAMC, so that such portion of the Zoning Map shall conform to the zoning on the map set forth in Section 1A of this ordinance.

Sec. 2. The City Clerk shall certify to the passage of this ordinance and have it published in accordance with Council policy, either in a daily newspaper circulated in the City of Los Angeles or by posting for ten days in three public places in the City of Los Angeles: one copy on the bulletin board located at the Main Street entrance to the Los Angeles City Hall; one copy on the bulletin board located at the Main Street entrance to the Los Angeles City Hall East; and one copy on the bulletin board located at the Temple Street entrance to the Los Angeles County Hall of Records.

I hereby certify that this ordinance was passed by the Council of the City of Los Angeles at its meeting of JUL 2 2014.

HOLLY L. WOLCOTT, Interim City Clerk

By  Deputy

Approved 7/8/14

 Mayor

Approved as to Form and Legality

MICHAEL N. FEUER, City Attorney

By 
KENNETH T. FONG
Deputy City Attorney

Date June 16, 2014

File No(s). CF 12-0096-S1

Pursuant to Charter Section 559, I approve this ordinance on behalf of the City Planning Commission and recommend that it be adopted

5-28-, 2014

See attached report.


Michael LoGrande
Director of Planning

DECLARATION OF POSTING ORDINANCE

I, MARIA VIZCARRA, state as follows: I am, and was at all times hereinafter mentioned, a resident of the State of California, over the age of eighteen years, and a Deputy City Clerk of the City of Los Angeles, California.

Ordinance No. 183144 – Amending Section 12.04 of the Los Angeles Municipal Code to establish the Los Angeles River Improvement Overlay District and amend the zoning map accordingly – CPC-2007-3036-RIO - a copy of which is hereto attached, was finally adopted by the Los Angeles City Council on July 2, 2014, and under the direction of said City Council and the City Clerk, pursuant to Section 251 of the Charter of the City of Los Angeles and Ordinance No. 172959, on July 11, 2014 I posted a true copy of said ordinance at each of the three public places located in the City of Los Angeles, California, as follows: 1) one copy on the bulletin board located at the Main Street entrance to the Los Angeles City Hall; 2) one copy on the bulletin board located at the Main Street entrance to the Los Angeles City Hall East; 3) one copy on the bulletin board located at the Temple Street entrance to the Los Angeles County Hall of Records.

Copies of said ordinance were posted conspicuously beginning on July 11, 2014 and will be continuously posted for ten or more days.

I declare under penalty of perjury that the foregoing is true and correct.

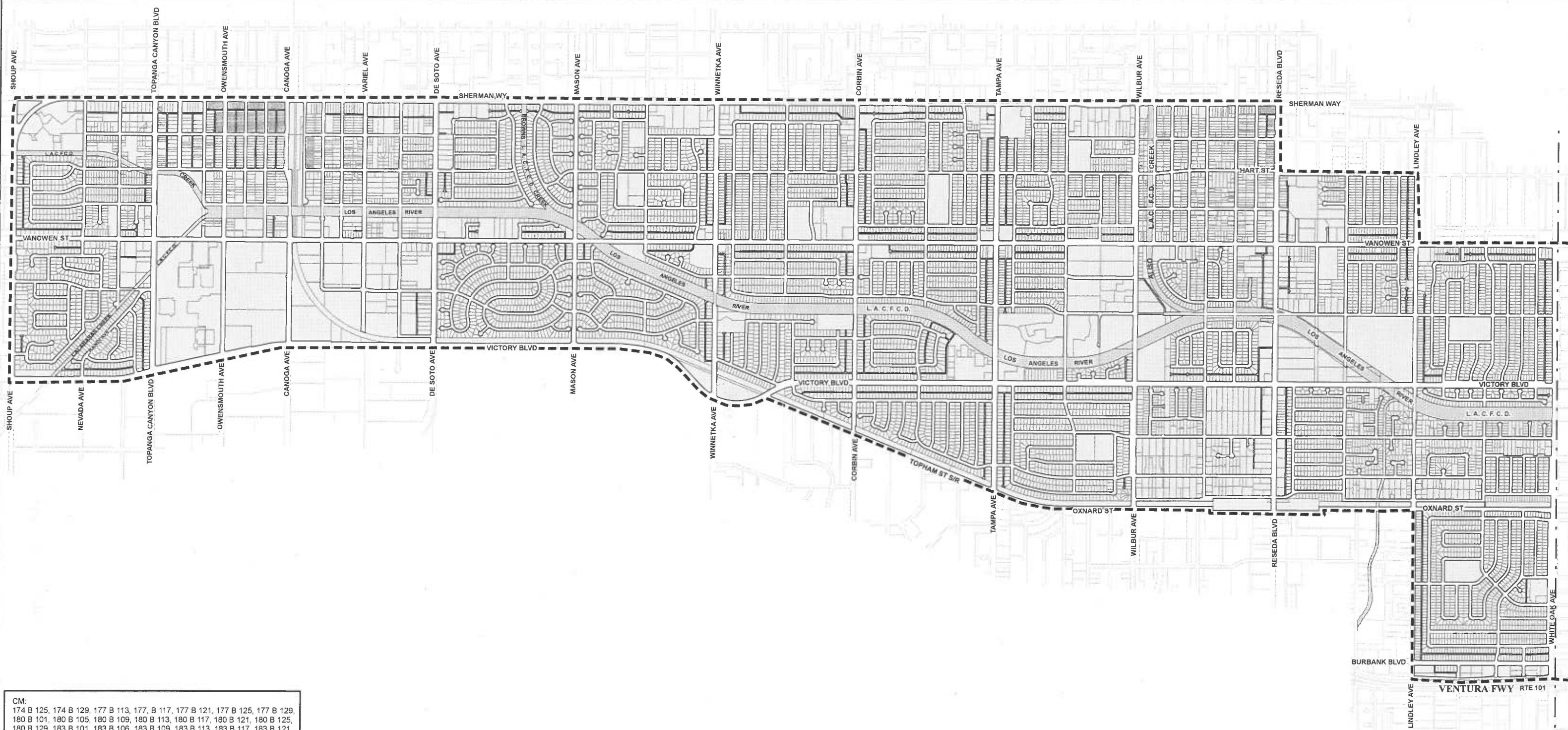
Signed this 11th day of July, 2014 at Los Angeles, California.



Maria Vizcarra, Deputy City Clerk

Ordinance Effective Date: August 20, 2014
Rev. (2/21/06)

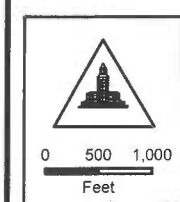
Council File No. 12-0096-S1



CM:
 174 B 125, 174 B 129, 177 B 113, 177 B 117, 177 B 121, 177 B 125, 177 B 129,
 180 B 101, 180 B 105, 180 B 109, 180 B 113, 180 B 117, 180 B 121, 180 B 125,
 180 B 129, 183 B 101, 183 B 106, 183 B 109, 183 B 113, 183 B 117, 183 B 121,
 183 B 125.

ALL ZONING AND HEIGHT DISTRICTS IN THE AFFECTED AREA REMAIN THE SAME. SUFFIX **-RIO** WAS ADDED BECAUSE THE AREA IS NOW INCLUDED IN THE LOS ANGELES RIVER IMPROVEMENT OVERLAY (LA-RIO), CPC 2007-3036-RIO. ALL BOUNDARIES FOLLOW EXISTING ZONES, EXCEPT WHERE NOTED OR DIMENSIONED. FREEWAY RIGHT OF WAY ARE NOT A PART OF THIS RIO OVERLAY.

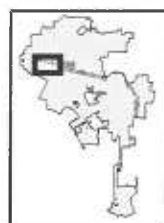
 **-RIO**
 **LOS ANGELES RIVER IMPROVEMENT OVERLAY DISTRICT BOUNDARY**

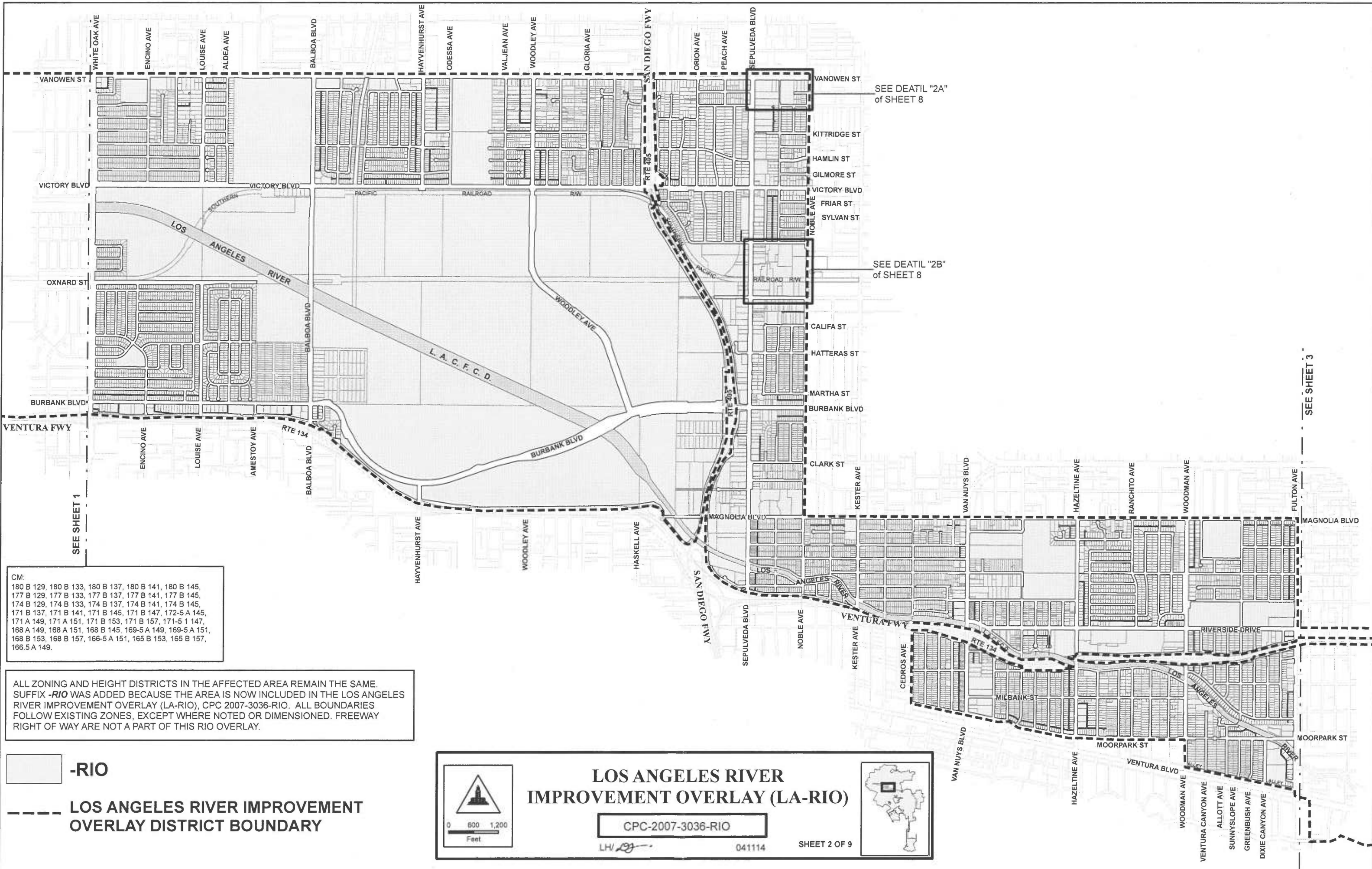


LOS ANGELES RIVER IMPROVEMENT OVERLAY (LA-RIO)

CPC-2007-3036-RIO

LH/  041114 SHEET 1 OF 9






CM:
180 B 129, 180 B 133, 180 B 137, 180 B 141, 180 B 145,
177 B 129, 177 B 133, 177 B 137, 177 B 141, 177 B 145,
174 B 129, 174 B 133, 174 B 137, 174 B 141, 174 B 145,
171 B 137, 171 B 141, 171 B 145, 171 B 147, 172-5 A 145,
171 A 149, 171 A 151, 171 B 153, 171 B 157, 171-5 1 147,
168 A 149, 168 A 151, 168 B 145, 169-5 A 149, 169-5 A 151,
168 B 153, 168 B 157, 166-5 A 151, 165 B 153, 165 B 157,
166-5 A 149.

ALL ZONING AND HEIGHT DISTRICTS IN THE AFFECTED AREA REMAIN THE SAME. SUFFIX **-RIO** WAS ADDED BECAUSE THE AREA IS NOW INCLUDED IN THE LOS ANGELES RIVER IMPROVEMENT OVERLAY (LA-RIO), CPC 2007-3036-RIO. ALL BOUNDARIES FOLLOW EXISTING ZONES, EXCEPT WHERE NOTED OR DIMENSIONED. FREEWAY RIGHT OF WAY ARE NOT A PART OF THIS RIO OVERLAY.


 **-RIO**

 **LOS ANGELES RIVER IMPROVEMENT OVERLAY DISTRICT BOUNDARY**



0 600 1,200
Feet

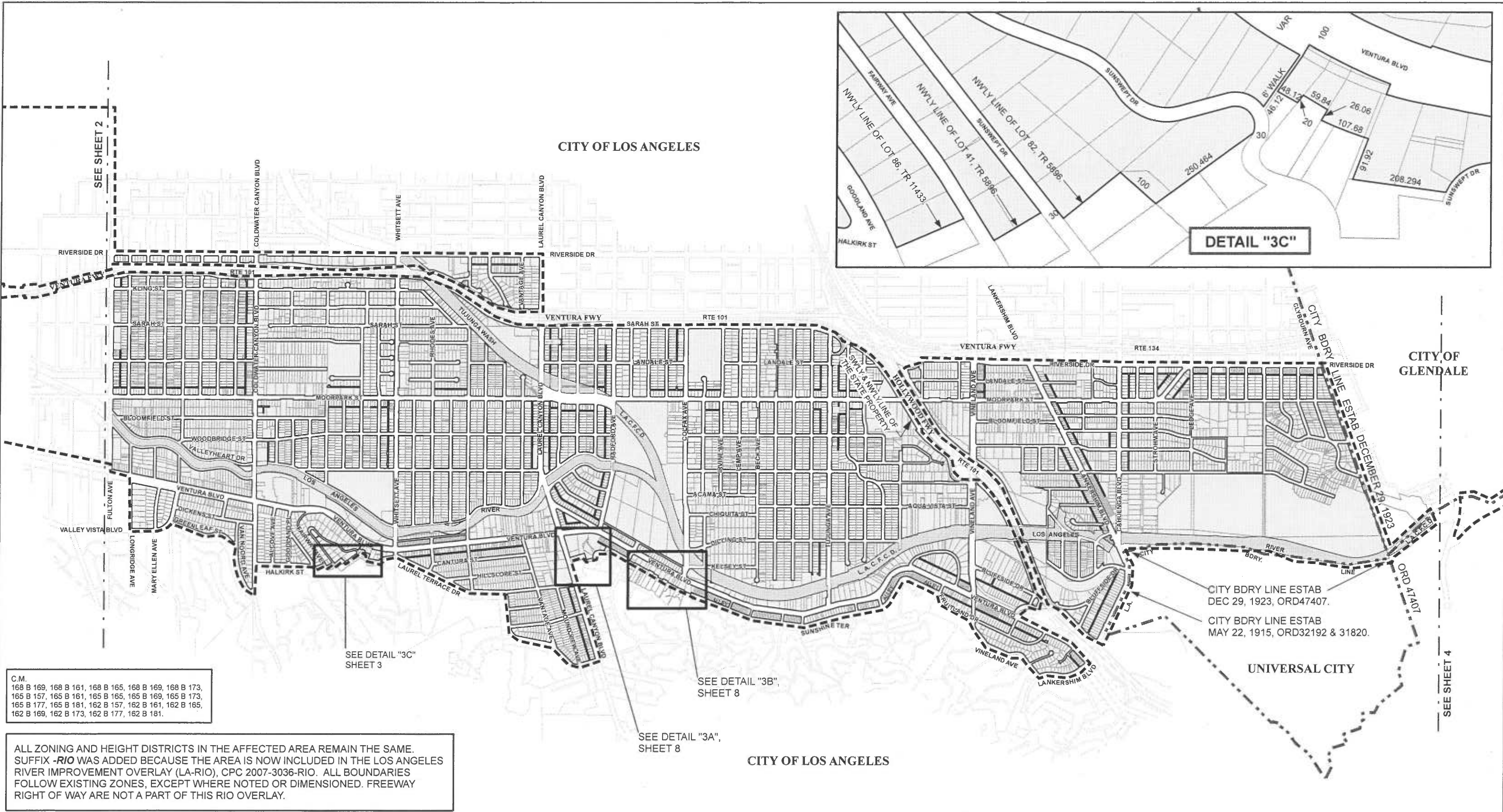
LOS ANGELES RIVER IMPROVEMENT OVERLAY (LA-RIO)

CPC-2007-3036-RIO

LHI  041114

SHEET 2 OF 9





-RIO

LOS ANGELES RIVER IMPROVEMENT OVERLAY DISTRICT BOUNDARY

CITY BOUNDARY

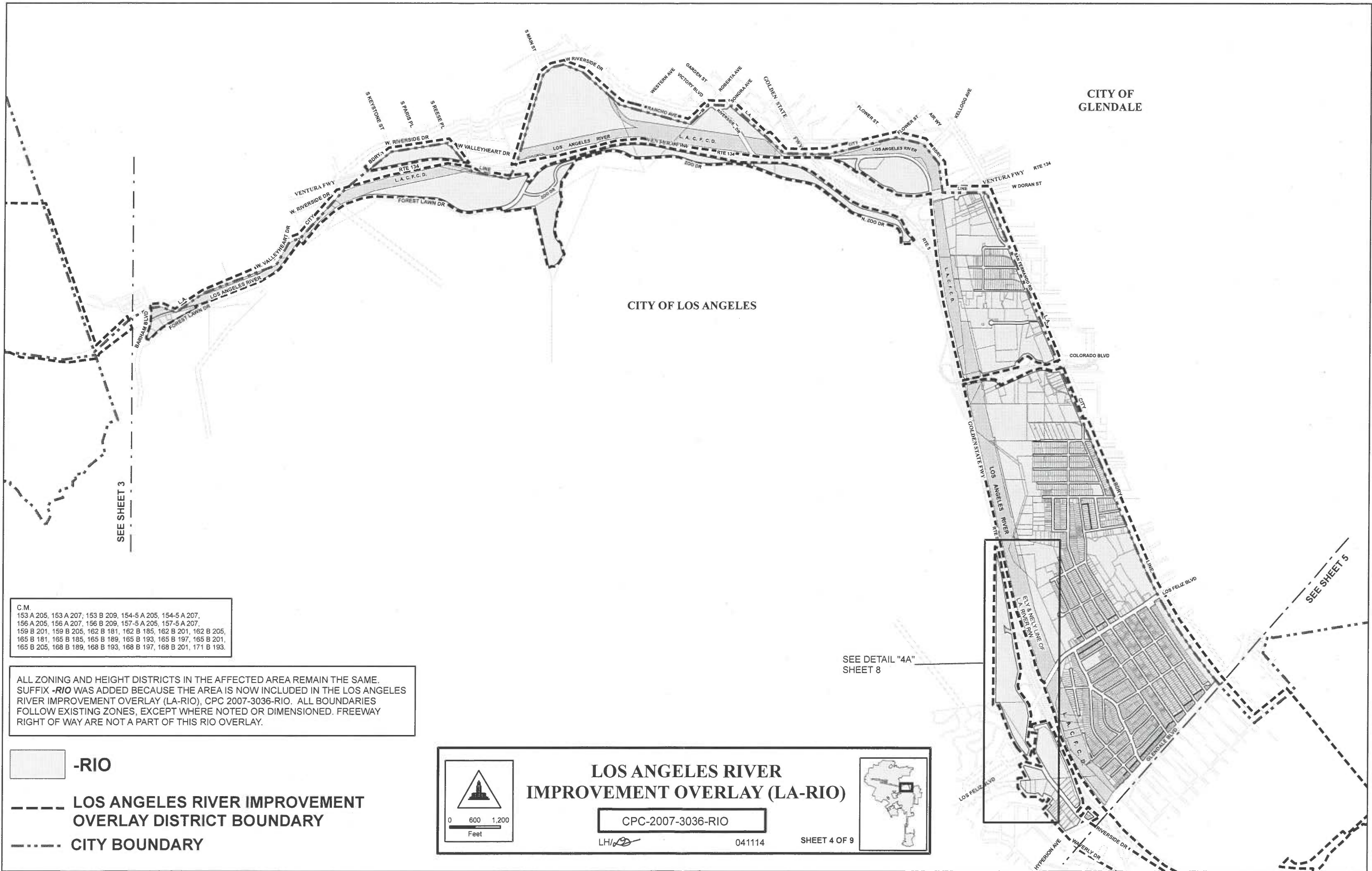
LOS ANGELES RIVER IMPROVEMENT OVERLAY (LA-RIO)

CPC-2007-3036-RIO

LH/

041114

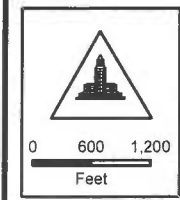
SHEET 3 OF 9



C.M.
153 A 205, 153 A 207, 153 B 209, 154-5 A 205, 154-5 A 207,
156 A 205, 156 A 207, 156 B 209, 157-5 A 205, 157-5 A 207,
159 B 201, 159 B 205, 162 B 181, 162 B 185, 162 B 201, 162 B 205,
165 B 181, 165 B 185, 165 B 189, 165 B 193, 165 B 197, 165 B 201,
165 B 205, 168 B 189, 168 B 193, 168 B 197, 168 B 201, 171 B 193.

ALL ZONING AND HEIGHT DISTRICTS IN THE AFFECTED AREA REMAIN THE SAME. SUFFIX **-RIO** WAS ADDED BECAUSE THE AREA IS NOW INCLUDED IN THE LOS ANGELES RIVER IMPROVEMENT OVERLAY (LA-RIO), CPC 2007-3036-RIO. ALL BOUNDARIES FOLLOW EXISTING ZONES, EXCEPT WHERE NOTED OR DIMENSIONED. FREEWAY RIGHT OF WAY ARE NOT A PART OF THIS RIO OVERLAY.

- RIO**
- LOS ANGELES RIVER IMPROVEMENT OVERLAY DISTRICT BOUNDARY**
- CITY BOUNDARY**



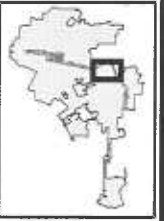
**LOS ANGELES RIVER
IMPROVEMENT OVERLAY (LA-RIO)**

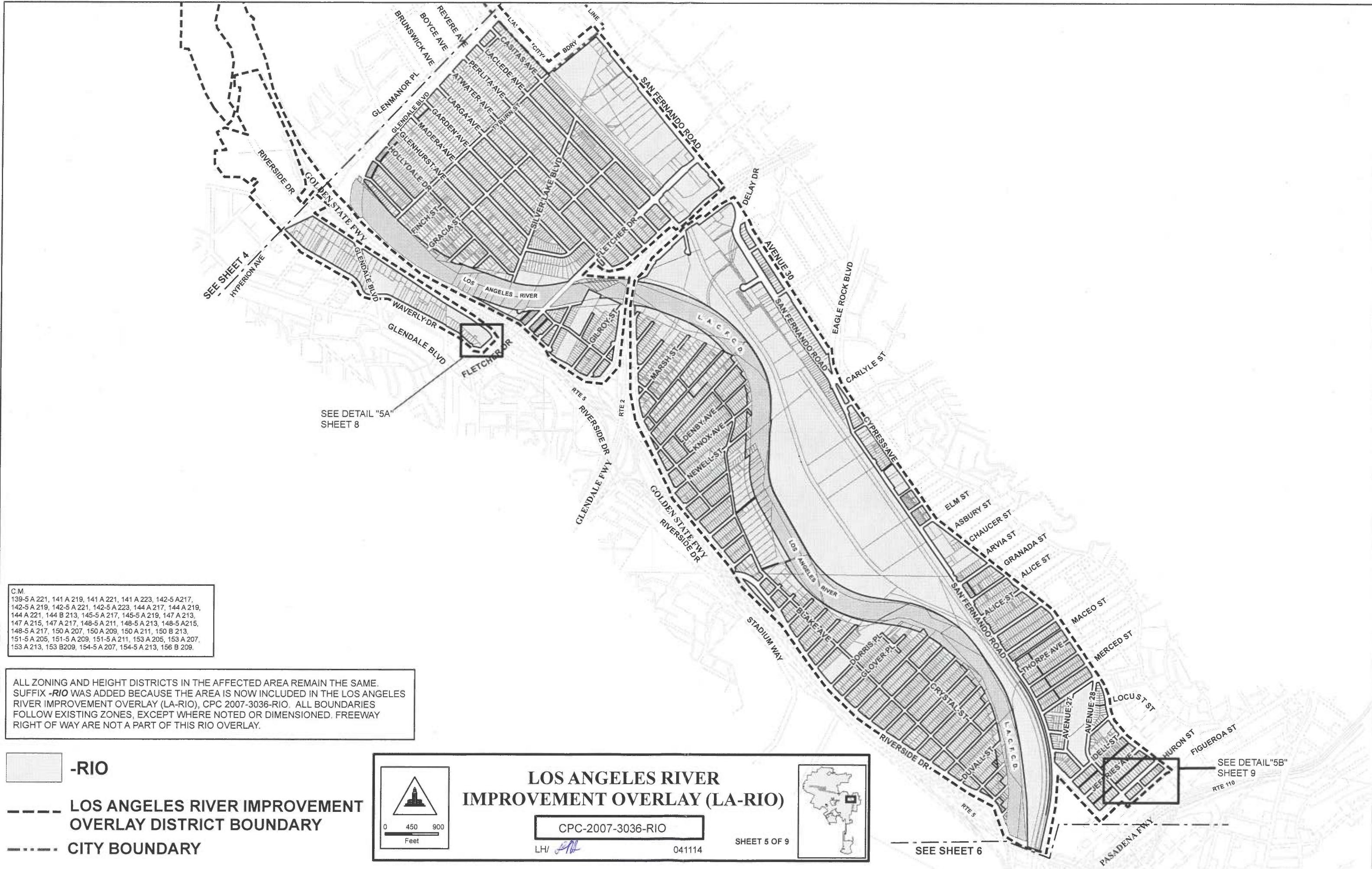
CPC-2007-3036-RIO

LH/

041114

SHEET 4 OF 9

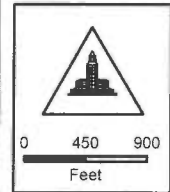




C.M.
139-5 A 221, 141 A 219, 141 A 221, 141 A 223, 142-5 A 217,
142-5 A 219, 142-5 A 221, 142-5 A 223, 144 A 217, 144 A 219,
144 A 221, 144 B 213, 145-5 A 217, 145-5 A 219, 147 A 213,
147 A 215, 147 A 217, 148-5 A 211, 148-5 A 213, 148-5 A 215,
148-5 A 217, 150 A 207, 150 A 209, 150 A 211, 150 B 213,
151-5 A 205, 151-5 A 209, 151-5 A 211, 153 A 205, 153 A 207,
153 A 213, 153 B 209, 154-5 A 207, 154-5 A 213, 156 B 209.

ALL ZONING AND HEIGHT DISTRICTS IN THE AFFECTED AREA REMAIN THE SAME.
SUFFIX **-RIO** WAS ADDED BECAUSE THE AREA IS NOW INCLUDED IN THE LOS ANGELES
RIVER IMPROVEMENT OVERLAY (LA-RIO), CPC 2007-3036-RIO. ALL BOUNDARIES
FOLLOW EXISTING ZONES, EXCEPT WHERE NOTED OR DIMENSIONED. FREEWAY
RIGHT OF WAY ARE NOT A PART OF THIS RIO OVERLAY.

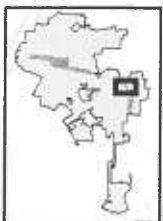
- RIO**
- LOS ANGELES RIVER IMPROVEMENT OVERLAY DISTRICT BOUNDARY**
- CITY BOUNDARY**



**LOS ANGELES RIVER
IMPROVEMENT OVERLAY (LA-RIO)**

CPC-2007-3036-RIO
LH/ *[Signature]* 041114

SHEET 5 OF 9



SEE SHEET 6

SEE DETAIL "5B"
SHEET 9
RTE 110

SEE SHEET 5

SEE DETAIL "6A"
SHEET 9

NORTH MAIN ST

GOLDEN STATE FWY

RTE 10

SAN BERNARDINO FWY

RTE 5

SANTANA FWY

RTE 101

RTE 101

L. A. C. F. G. D.

LOS ANGELES

MISSION ROAD

TEMPLE ST

HOLLYWOOD FWY

ALAMEDA ST

SEE SHEET 7

C.M.
136-5 A 219, 136-5 A 221, 135 A 215, 135 A 217, 135 A 219,
135 A 221, 133-5 A 215, 133-5 A 217, 133-5 A 219, 133-5 A 217,
132 A 215, 132 A 217, 132 A 219, 132 A 221, 130-5 A 215,
130-5 A 217, 130-5 A 219, 130-5 A 221, 130-5 A 223, 129 A 215,
129 A 217, 129 A 219, 129 A 224.

ALL ZONING AND HEIGHT DISTRICTS IN THE AFFECTED AREA REMAIN THE SAME.
SUFFIX **-RIO** WAS ADDED BECAUSE THE AREA IS NOW INCLUDED IN THE LOS ANGELES
RIVER IMPROVEMENT OVERLAY (LA-RIO), CPC 2007-3036-RIO. ALL BOUNDARIES
FOLLOW EXISTING ZONES, EXCEPT WHERE NOTED OR DIMENSIONED. FREEWAY
RIGHT OF WAY ARE NOT A PART OF THIS RIO OVERLAY.

 **-RIO**
 **LOS ANGELES RIVER IMPROVEMENT
OVERLAY DISTRICT BOUNDARY**



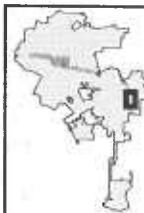
LOS ANGELES RIVER IMPROVEMENT OVERLAY (LA-RIO)

CPC-2007-3036-RIO

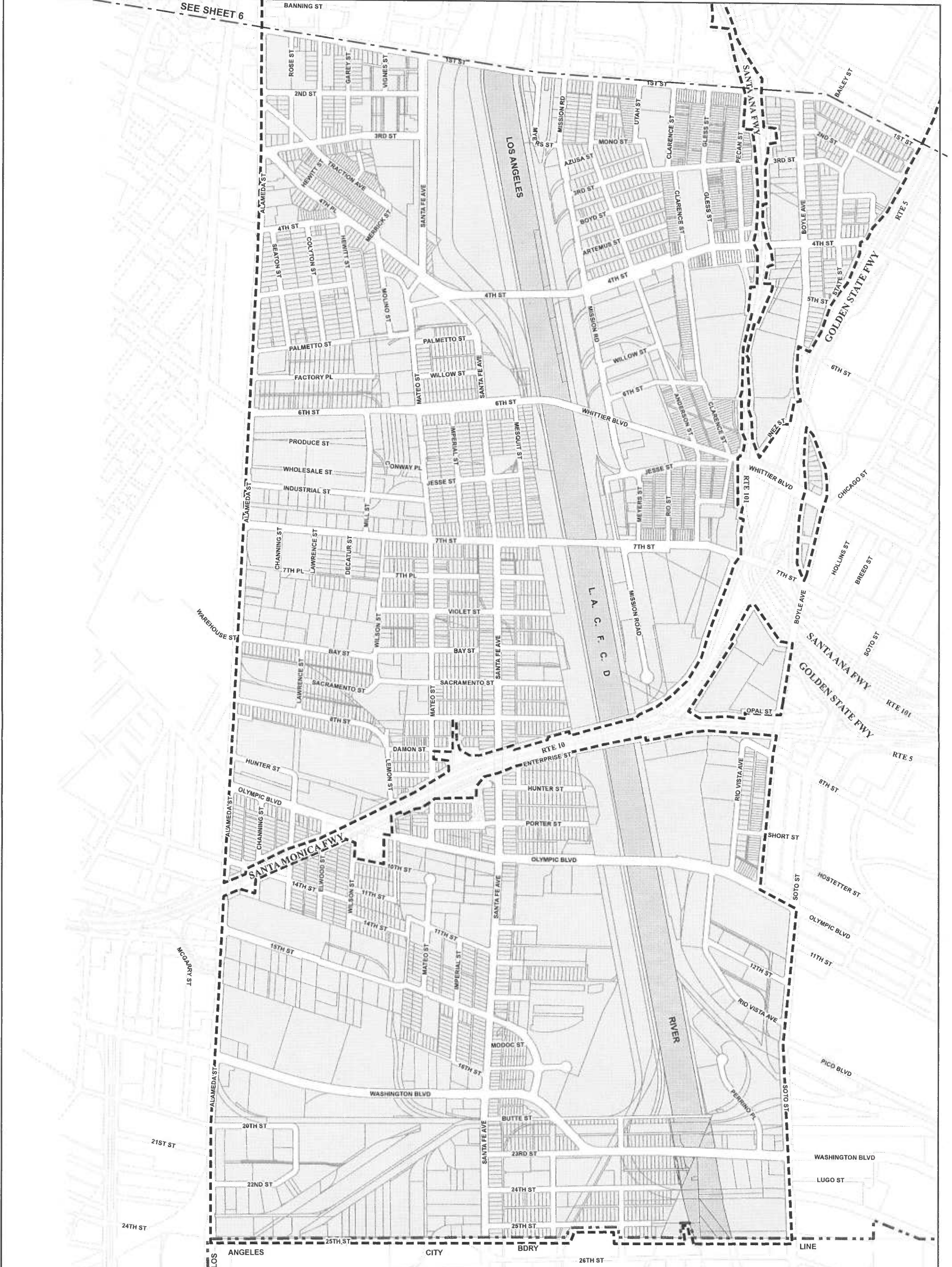
LH/cf

041114

SHEET 6 OF 9



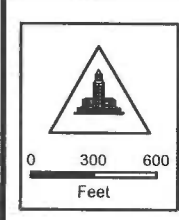
SEE SHEET 6



ALL ZONING AND HEIGHT DISTRICTS IN THE AFFECTED AREA REMAIN THE SAME. SUFFIX **-RIO** WAS ADDED BECAUSE THE AREA IS NOW INCLUDED IN THE LOS ANGELES RIVER IMPROVEMENT OVERLAY (LA-RIO), CPC 2007-3036-RIO. ALL BOUNDARIES FOLLOW EXISTING ZONES, EXCEPT WHERE NOTED OR DIMENSIONED. FREEWAY RIGHT OF WAY ARE NOT A PART OF THIS RIO OVERLAY.

C.M.
129 A 215, 129 A 217, 129 A 219, 129 A 221, 127-5 A 215, 127-5 A 217, 127 5 A 219, 127 5 A 221, 126 A 215, 126 A 217, 126 A 219, 126 A 221, 124-5 A 215, 124-5 A 217, 124-5 A 219, 124-5 A 221, 123 A 215, 123 A 217, 123 A 219, 123 A 221, 121-5 A 215, 121-5 A 217, 121-5 A 219, 121-5 A 221, 120 A 215, 120 A 217, 120 A 219, 120 A 221, 118-5 A 215, 118-5 A 217, 118-5 A 219, 118-5 A 221, 117 A 215, 117 A 217, 117 A 219, 117 A 221.

- RIO
- LOS ANGELES RIVER IMPROVEMENT OVERLAY DISTRICT BOUNDARY
- City Boundary



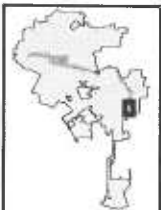
LOS ANGELES RIVER IMPROVEMENT OVERLAY (LA-RIO)

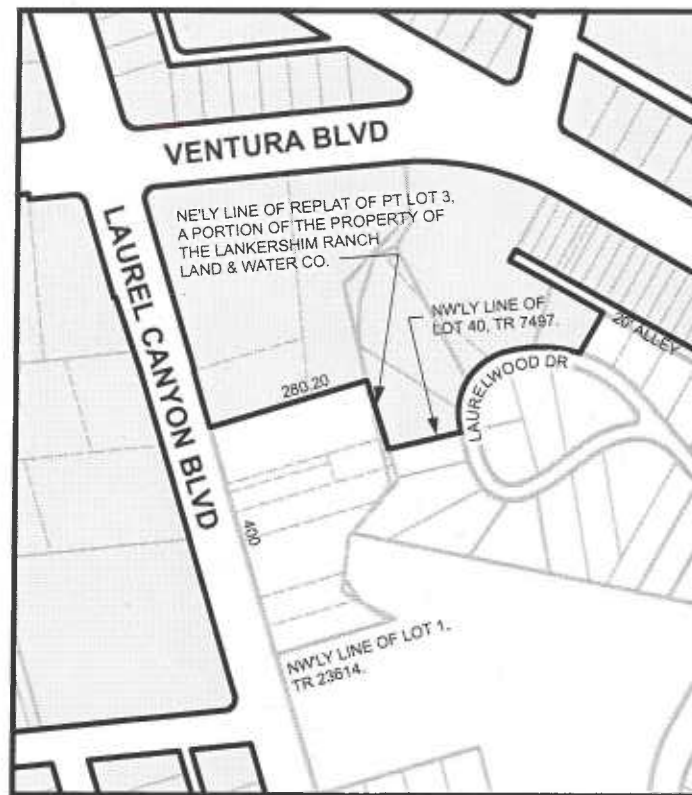
CPC-2007-3036-RIO

LH/22

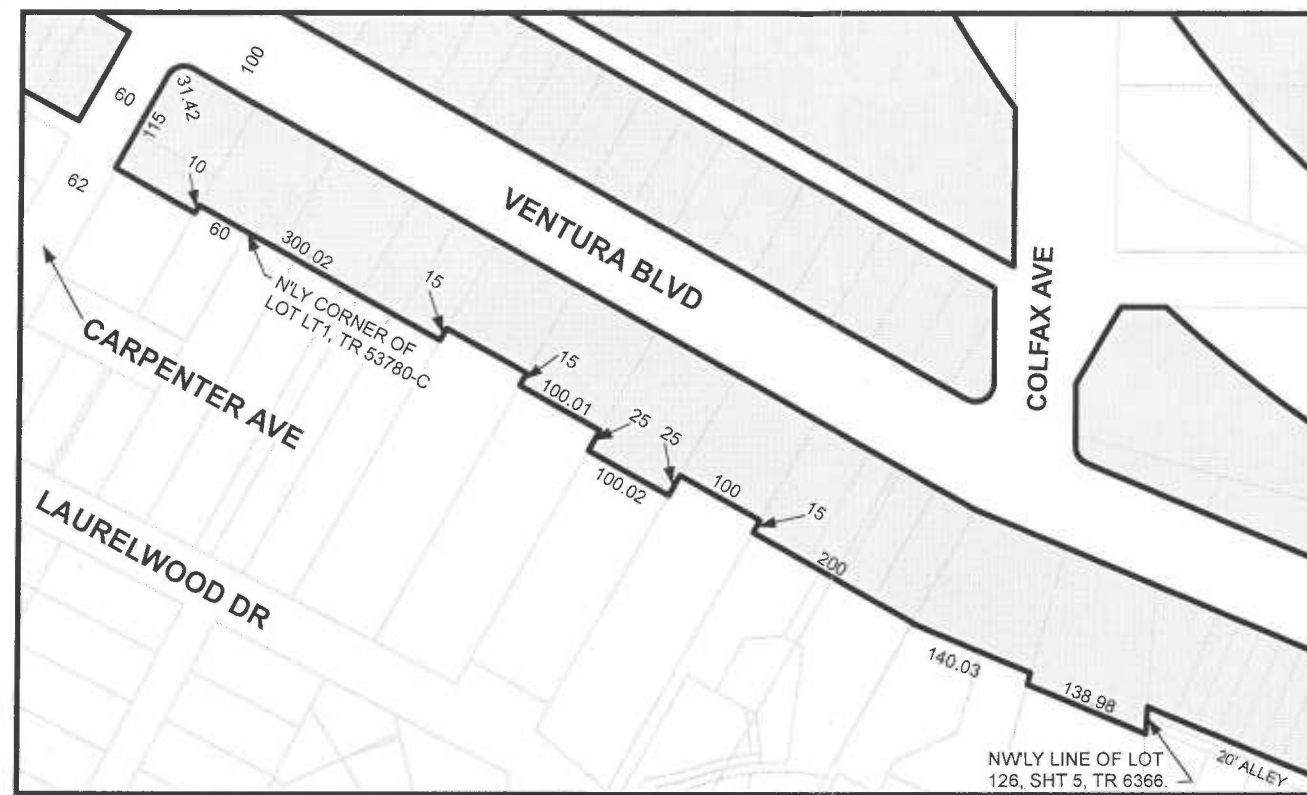
041114

SHEET 7 OF 9





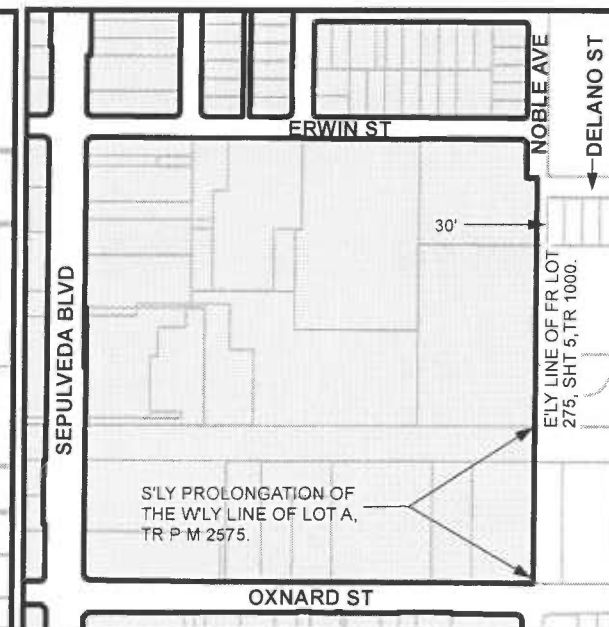
DETAIL "3A"



DETAIL "3B"



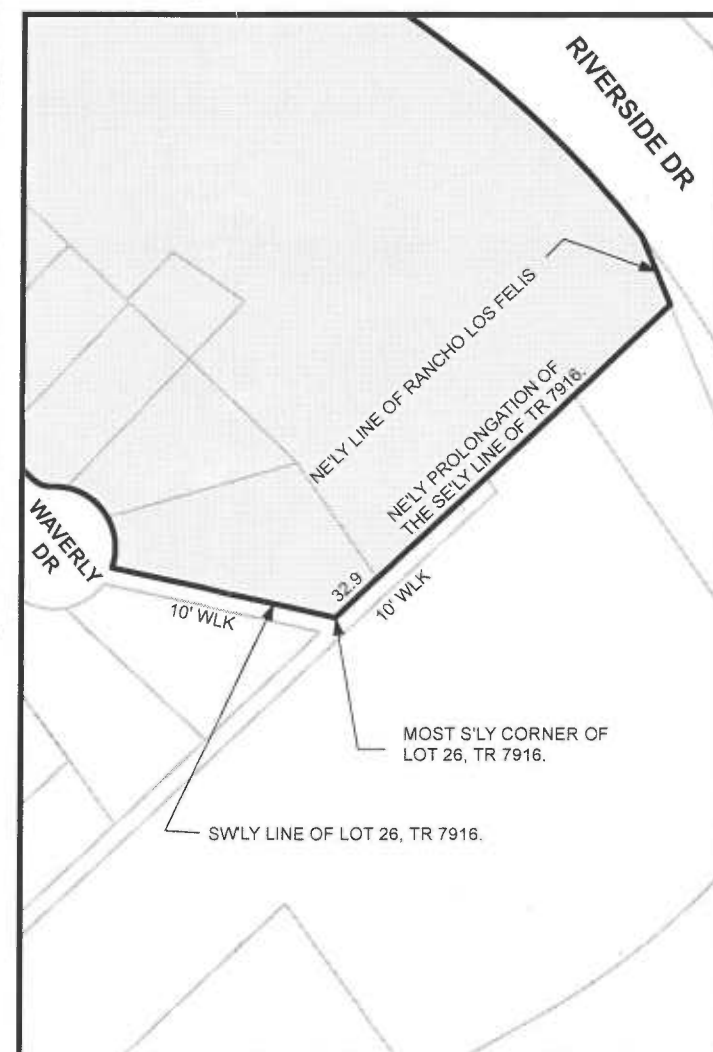
DETAIL "2A"



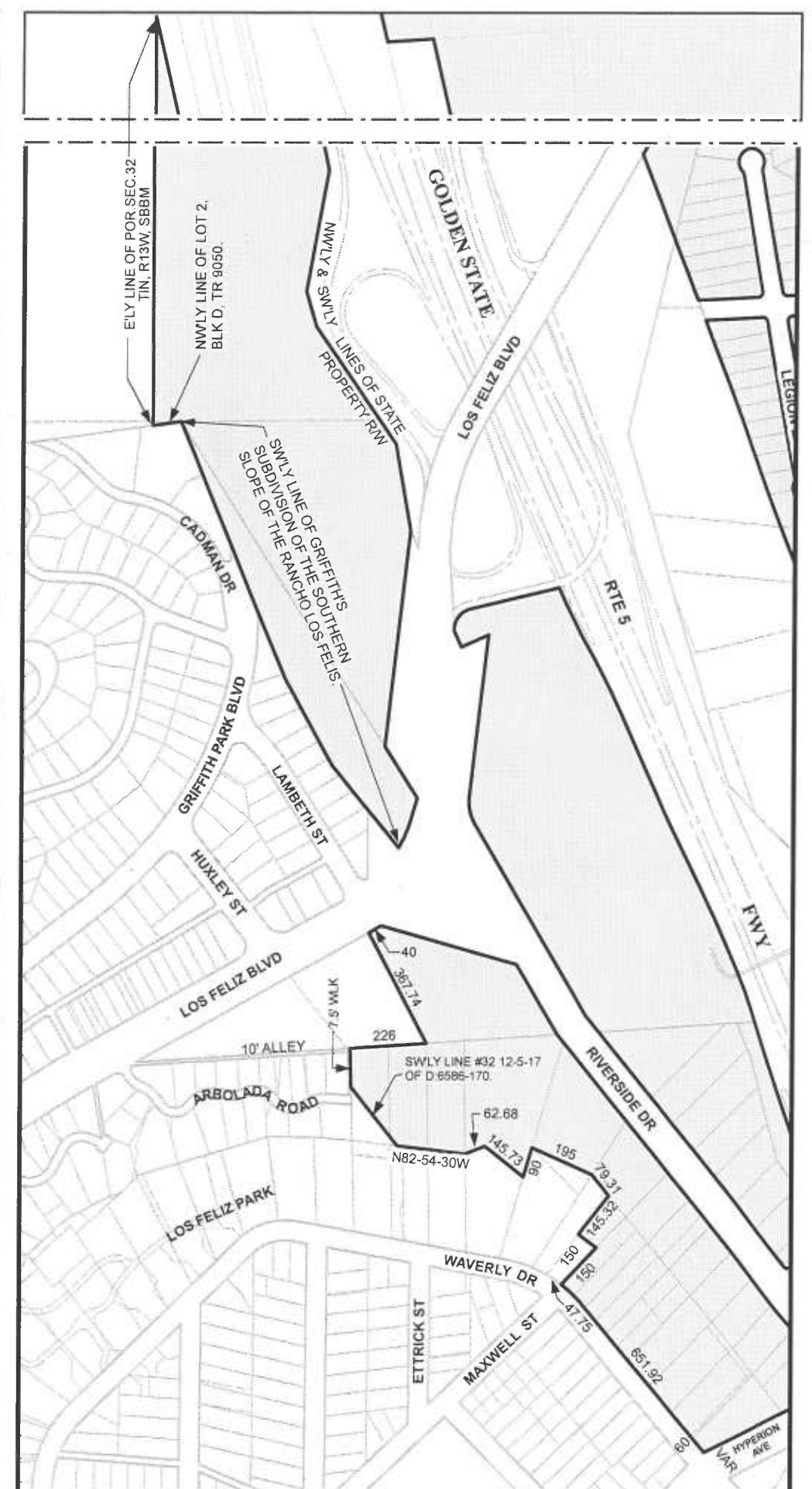
DETAIL "2B"

ALL ZONING AND HEIGHT DISTRICTS IN THE AFFECTED AREA REMAIN THE SAME. SUFFIX -RIO WAS ADDED BECAUSE THE AREA IS NOW INCLUDED IN THE LOS ANGELES RIVER IMPROVEMENT OVERLAY (LA-RIO), CPC 2007-3036-RIO. ALL BOUNDARIES FOLLOW EXISTING ZONES, EXCEPT WHERE NOTED OR DIMENSIONED. FREEWAY RIGHT OF WAY ARE NOT A PART OF THIS RIO OVERLAY.

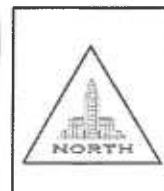
C.M.
153 A 205, 154-5 A 203, 154-5 A 205, 156 B 204, 159 B 201,
156 A 205, 150 B 209, 162 B 165, 162 B 169, 162 B 169,
168 B 161, 180 B 145, 177 B 145



DETAIL "5A"



DETAIL "4A"



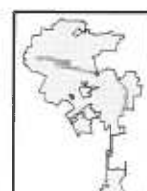
LOS ANGELES RIVER IMPROVEMENT OVERLAY (LA-RIO)

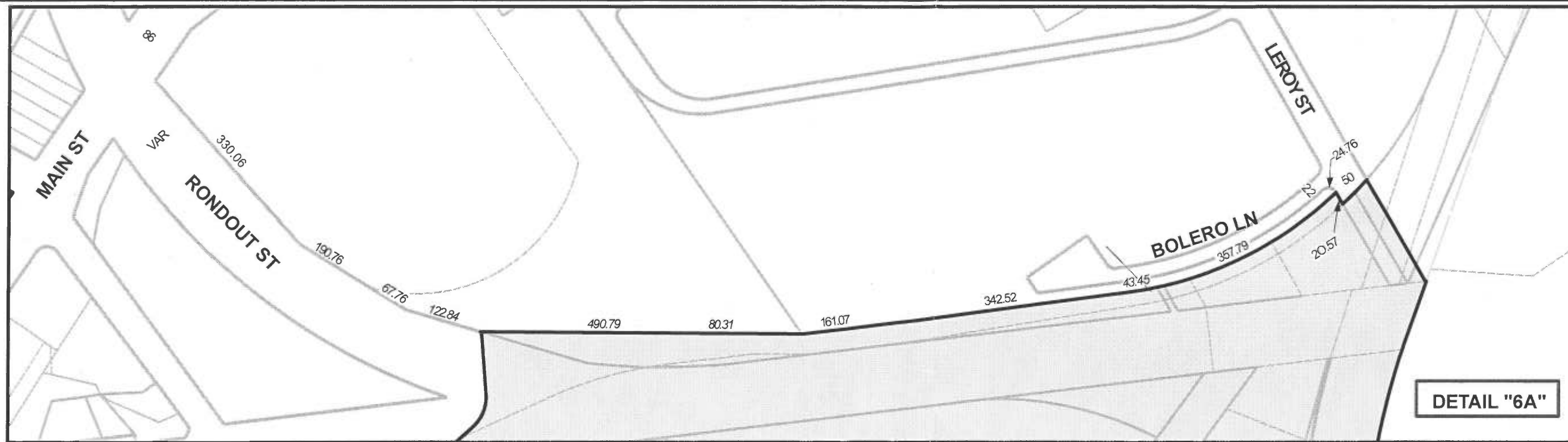
CPC-2007-3036-RIO

LHI/

040814

SHEET 8 OF 9





ALL ZONING AND HEIGHT DISTRICTS IN THE AFFECTED AREA REMAIN THE SAME. SUFFIX -RIO WAS ADDED BECAUSE THE AREA IS NOW INCLUDED IN THE LOS ANGELES RIVER IMPROVEMENT OVERLAY (LA-RIO), CPC 2007-3036-RIO. ALL BOUNDARIES FOLLOW EXISTING ZONES, EXCEPT WHERE NOTED OR DIMENSIONED. FREEWAY RIGHT OF WAY ARE NOT A PART OF THIS RIO OVERLAY.

C.M.
142.5 A 219, 142.5 A 221, 144 A 221, 133.5 A 217,
135 A 217, 135 A 219, 141 A 221, 141 A 223,



LOS ANGELES RIVER IMPROVEMENT OVERLAY (LA-RIO)

CPC-2007-3036-RIO

LH/SP

040814

SHEET 9 OF 9

