

Date: 11-20-12  
Submitted in PAW Committee  
Council File No: 12-0186  
Item No. 2  
Deputy: \_\_\_\_\_

# Protected Contact

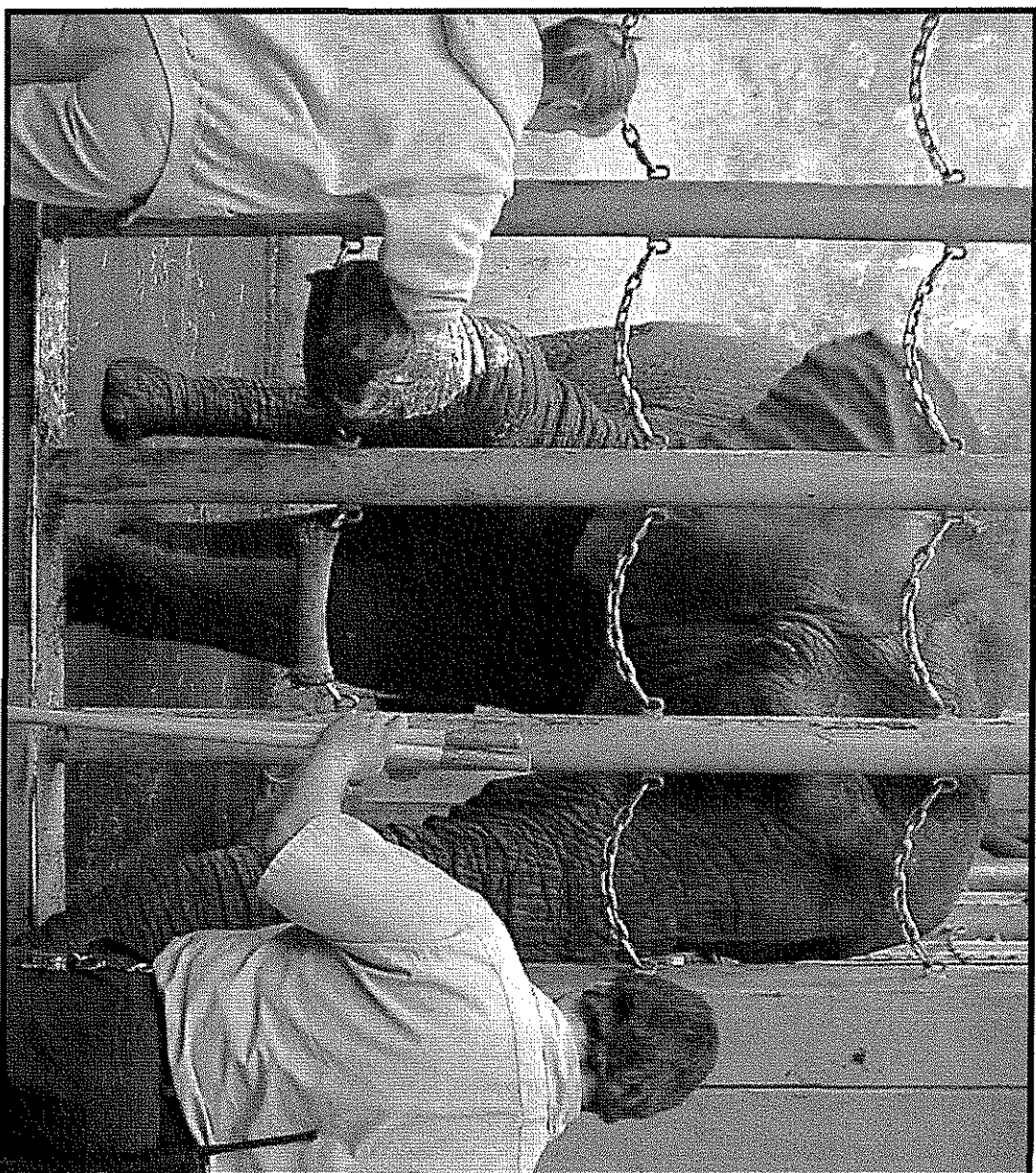
Margaret Whittaker  
Active Environments, Inc.  
[www.activeenvironments.org](http://www.activeenvironments.org)

# **RISKY BUSINESS**

- 1976 – 91 15 elephant-related deaths
- 1989 – 91 6 of the deaths occurred
- Currently 1 to 2 serious injuries or deaths/year
- OSHA – elephant handling most dangerous occupation in US
- 3 times more dangerous than coal mining

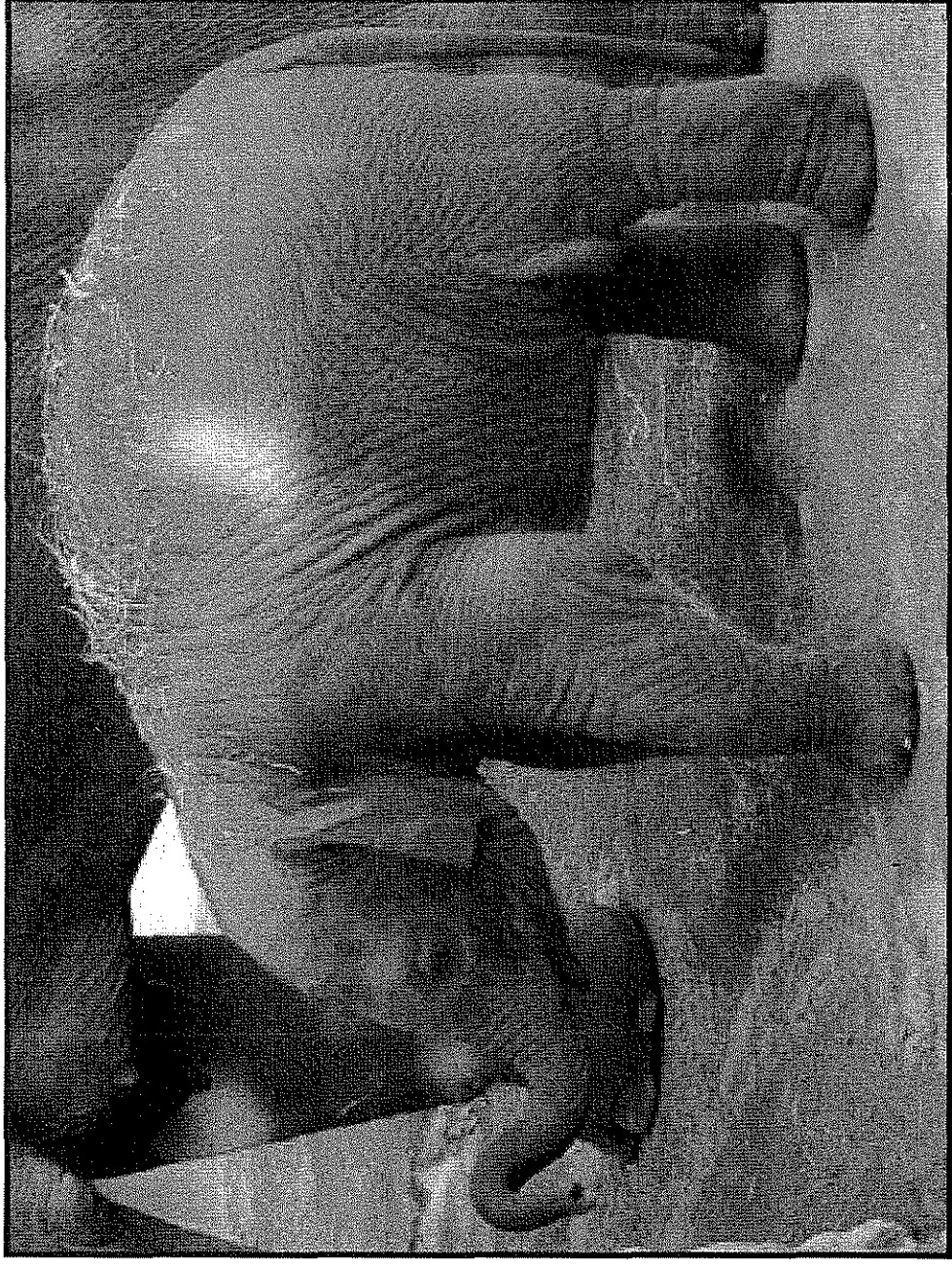
# PROTECTED CONTACT OBJECTIVES

## 1. Keeper Safety



# PROTECTED CONTACT OBJECTIVES

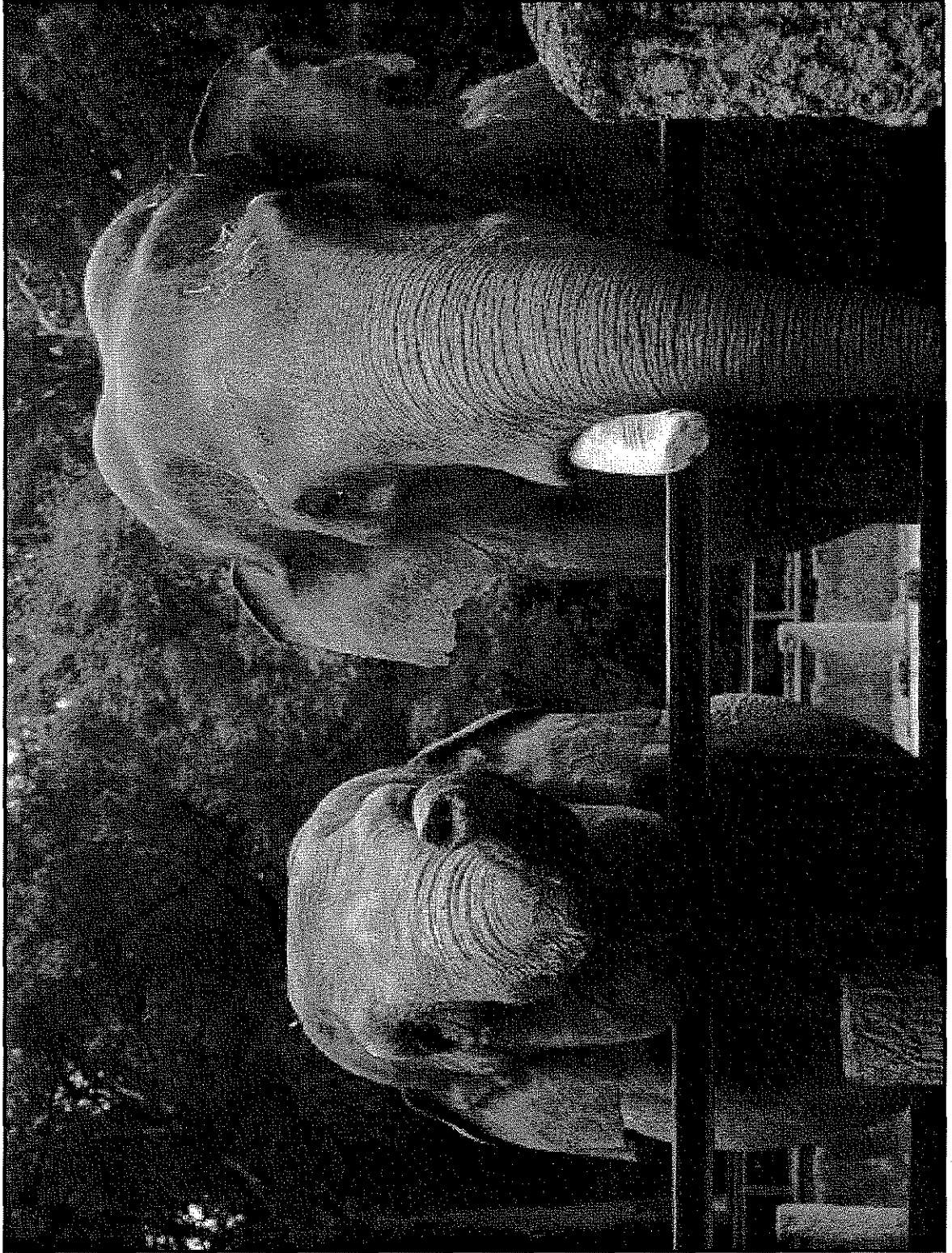
## 2. Animal Welfare



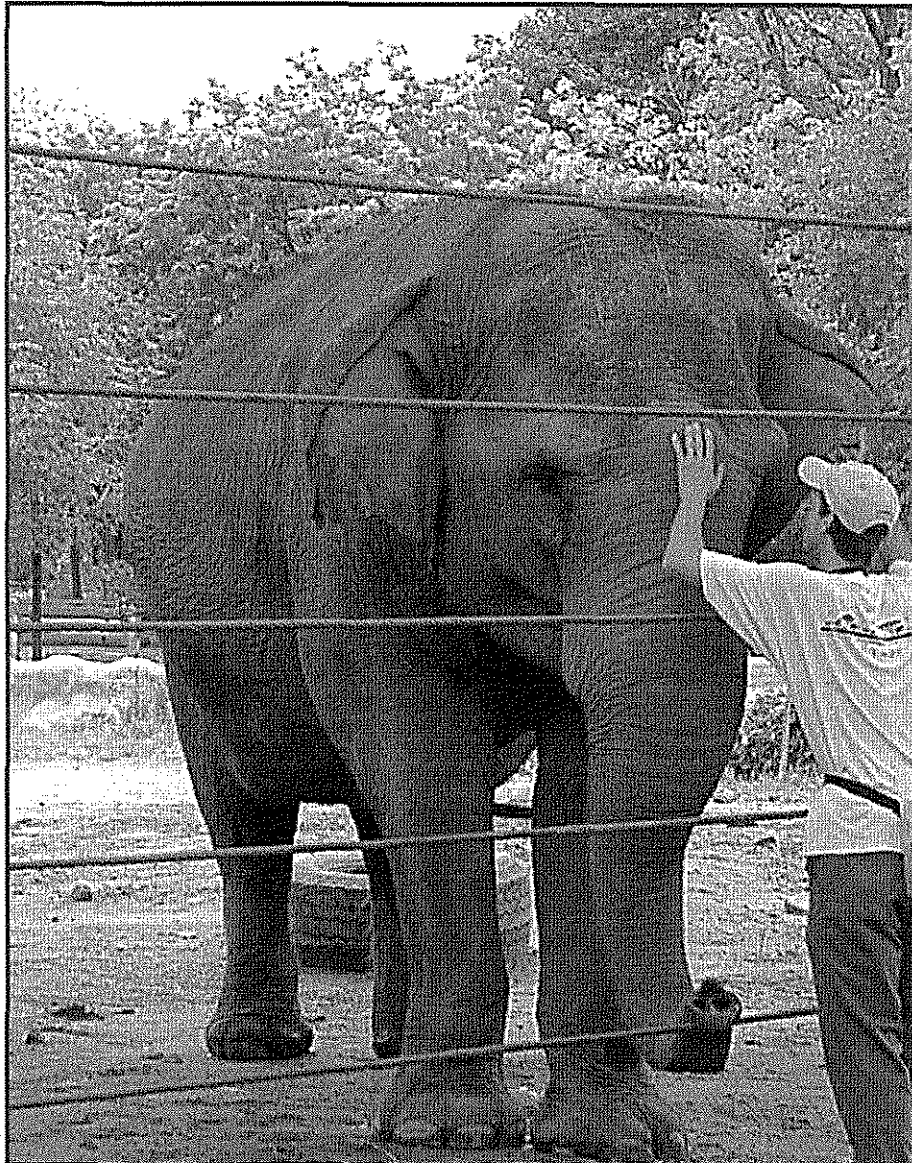
# PC DEFINITION

- A system for managing elephants that uses positive reinforcement as the primary method to modify behavior. Physical punishment is prohibited.
- Elephant positioning and movement are directed through the use of targets.
- Keeper safety is achieved by elephant and keeper position relative to each other and to a barrier.
- A barrier typically separates human and animal spaces.
- Trainers function outside the elephant social hierarchy and do not attempt to establish a position of social dominance.

**NOT JUST A WALL**



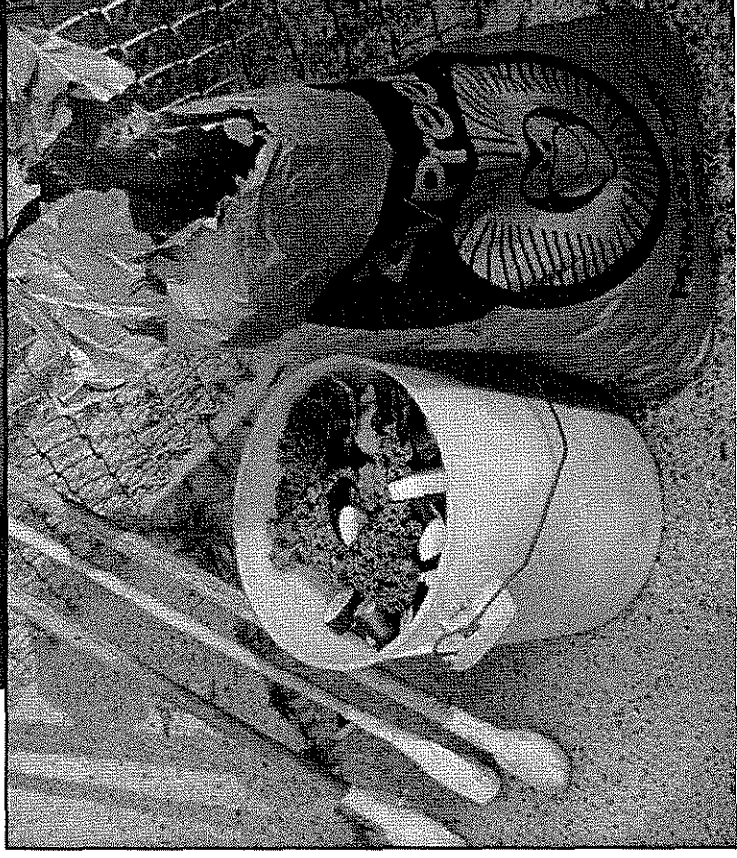
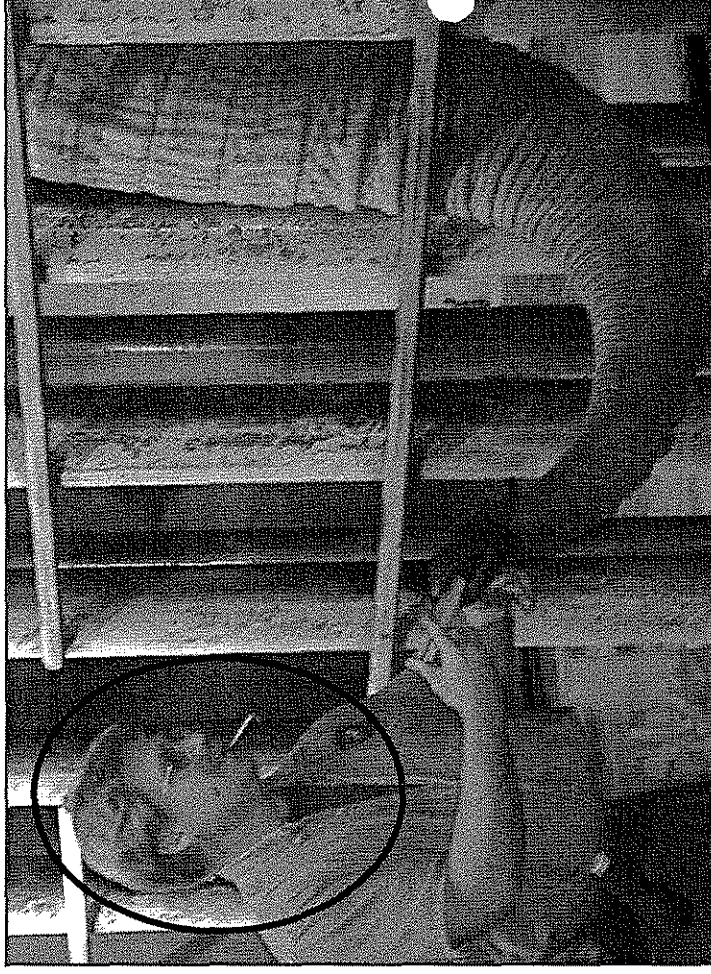
# Elephant – Trainer Relationship



- Trainer does not fit into the social hierarchy
- Trainer attempts to diminish this type of relationship
- Trainer is not socially dominant

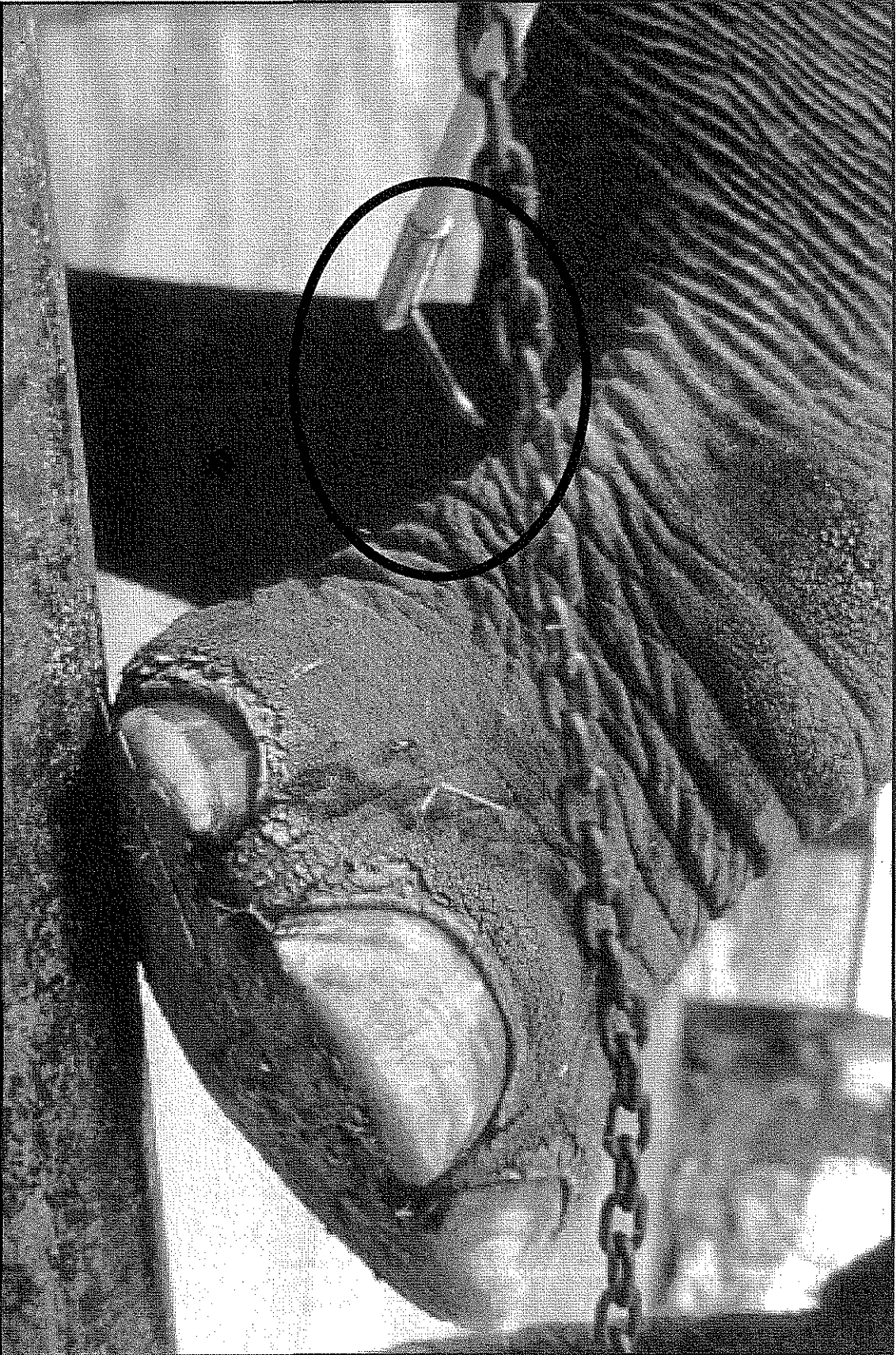
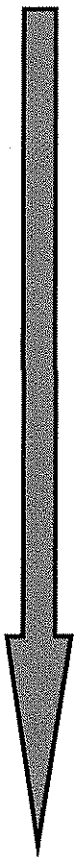
# Tools of PC

- Whistle
- Targets
- Food  
reinforcers





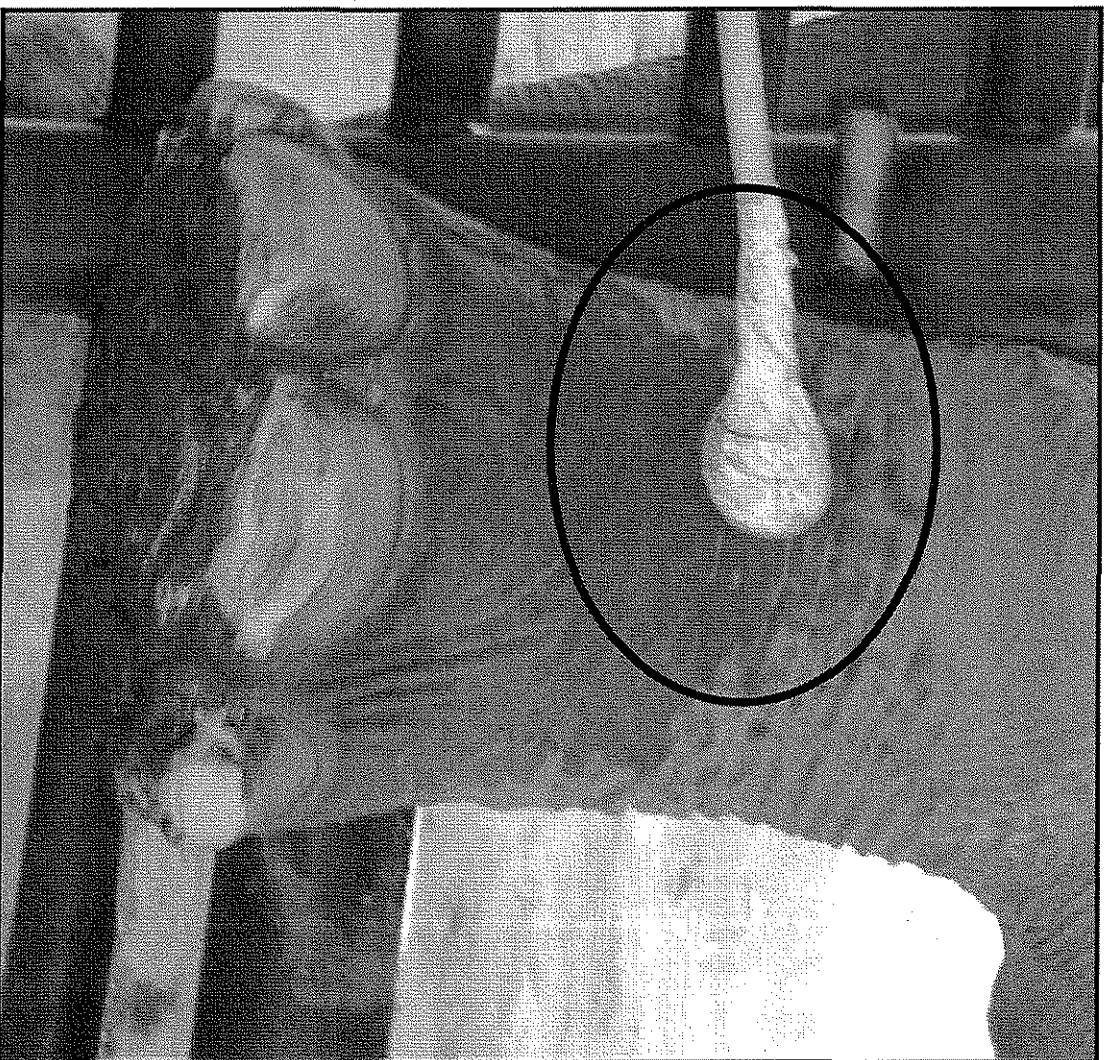
**FROM HOOK**



# An ankus, hook, guide...

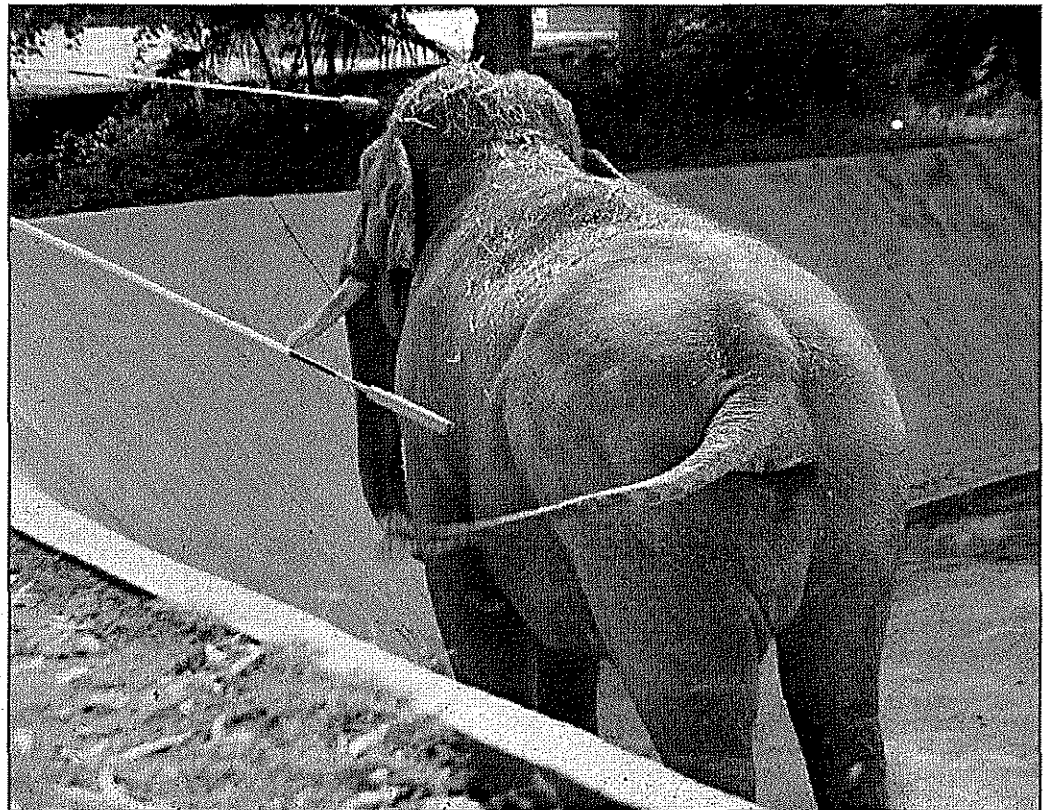
- Is used to cue and shape behavior
- Is established as an aversive stimulus and functions as a negative reinforcer
- Is traditionally used to maintain the trainer in a socially dominant position
- Is used to mete out physical punishment

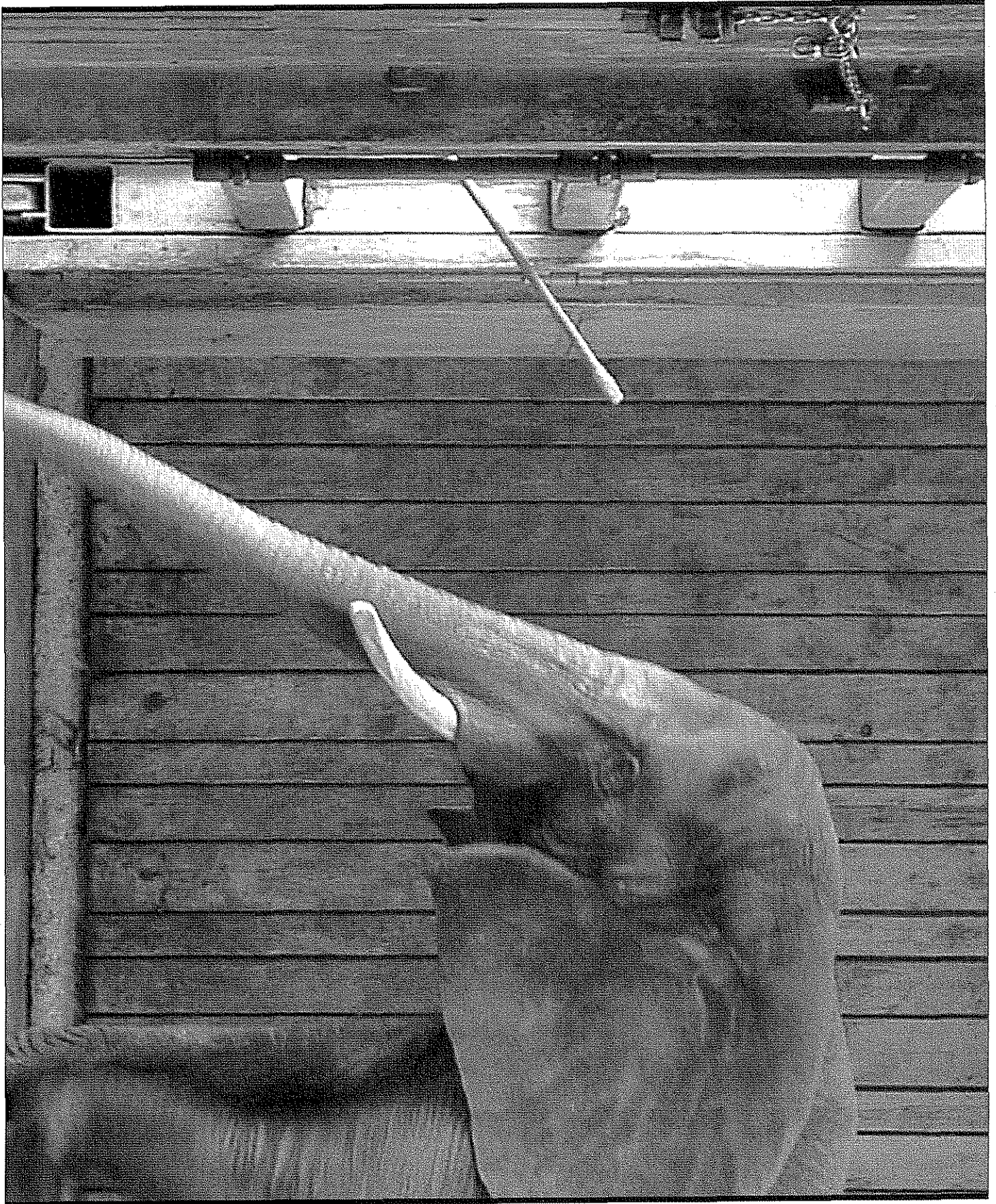
# **TO TARGET** **THE TOOL FOR POSITIVE** **REINFORCEMENT**

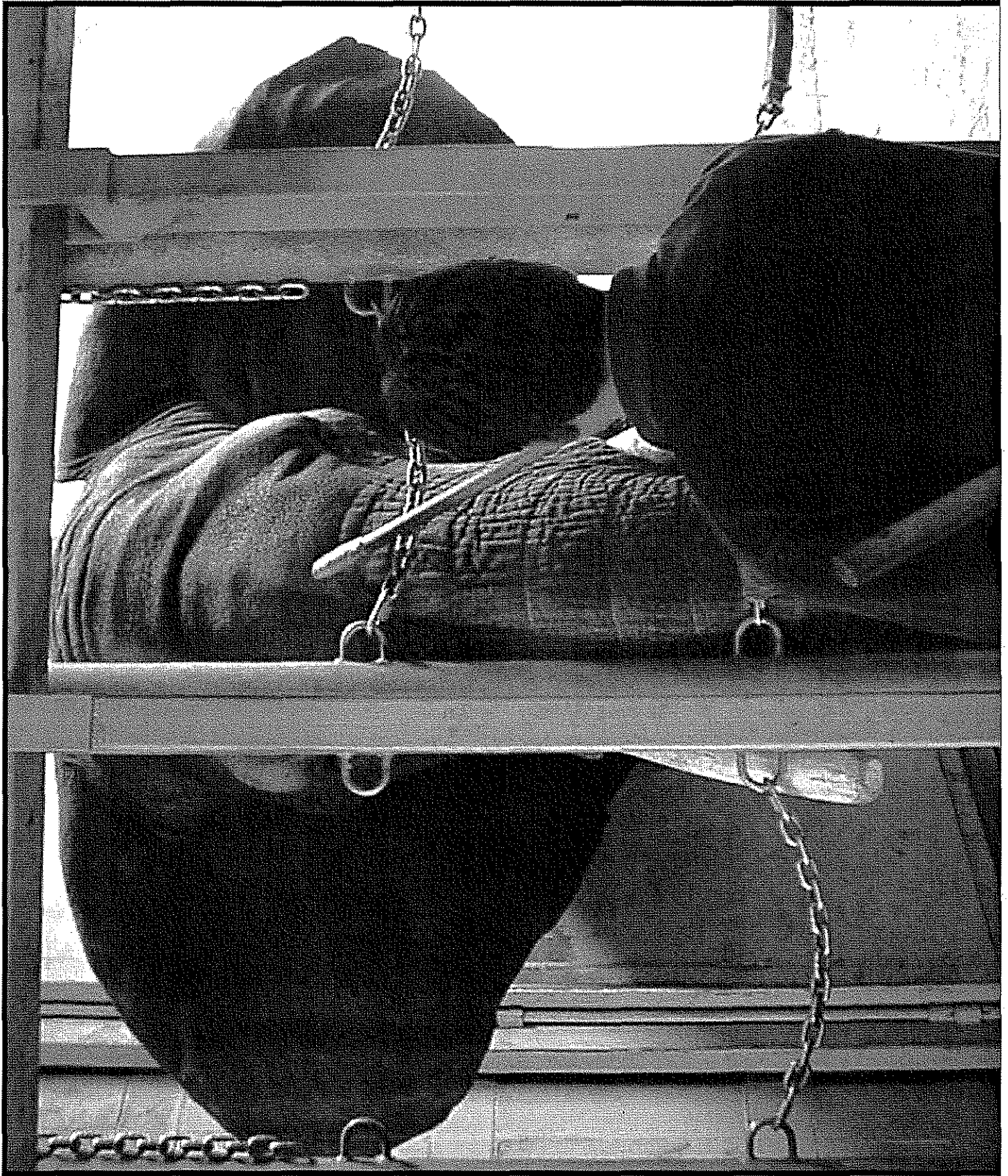


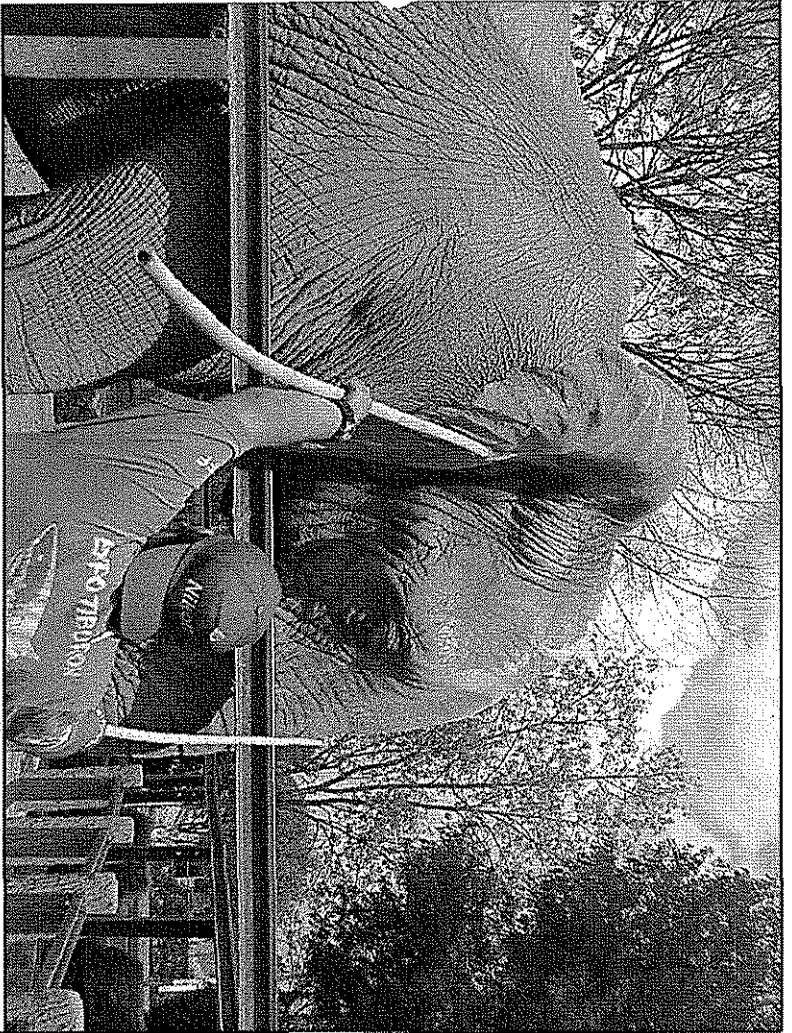
# A target...

- Is used to cue and shape behavior
- Is a neutral object the animal moves towards
- Is associated exclusively with positive reinforcement





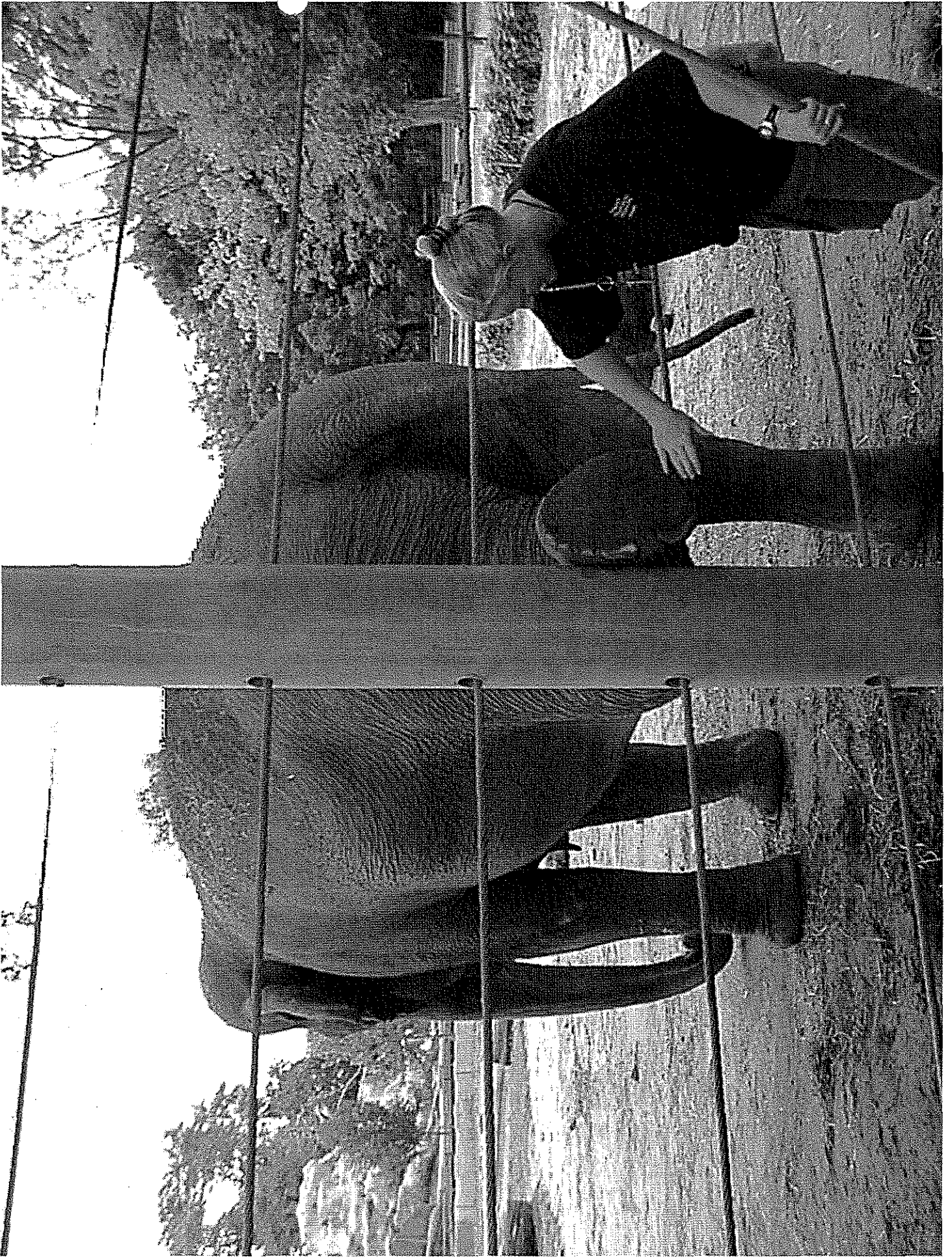


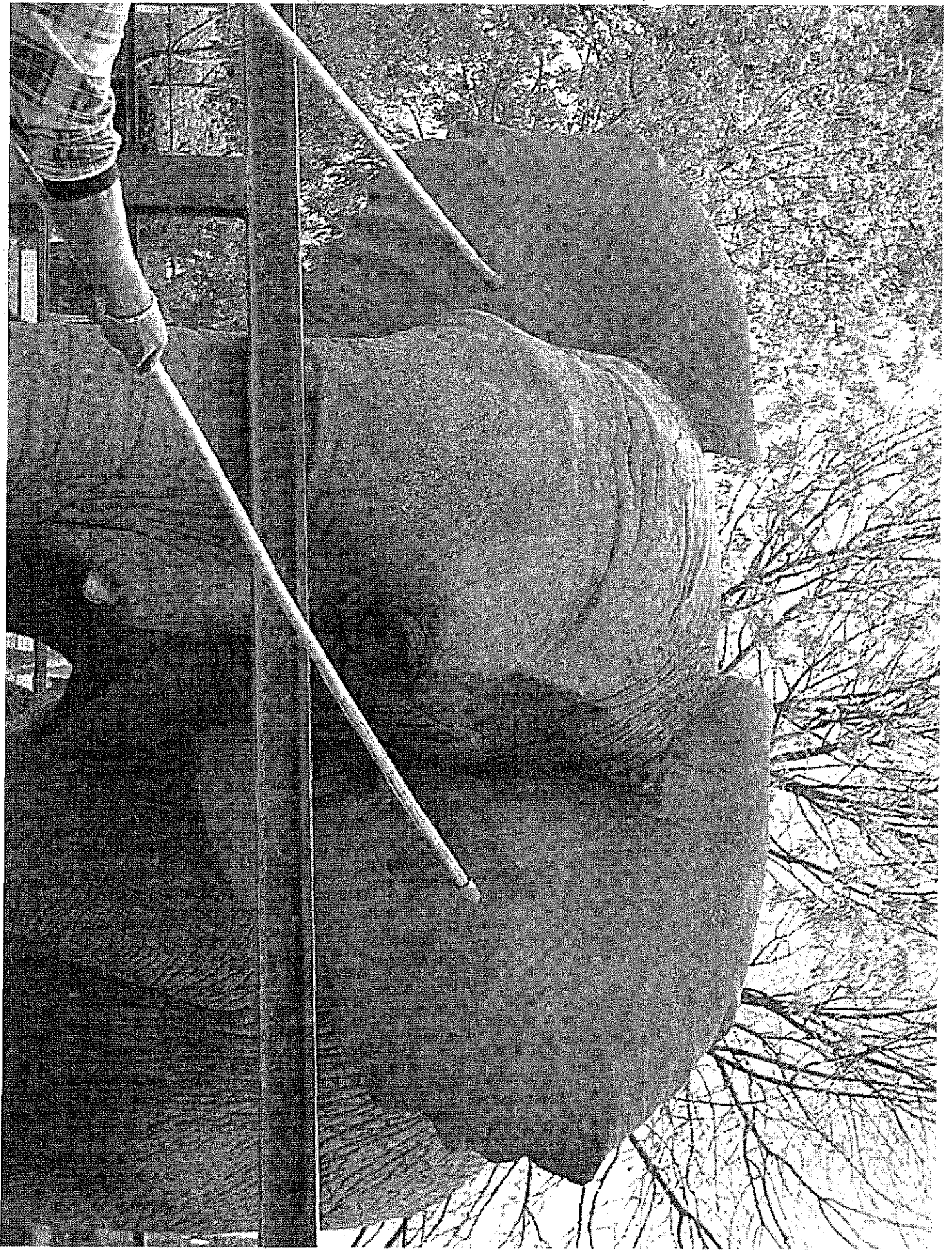










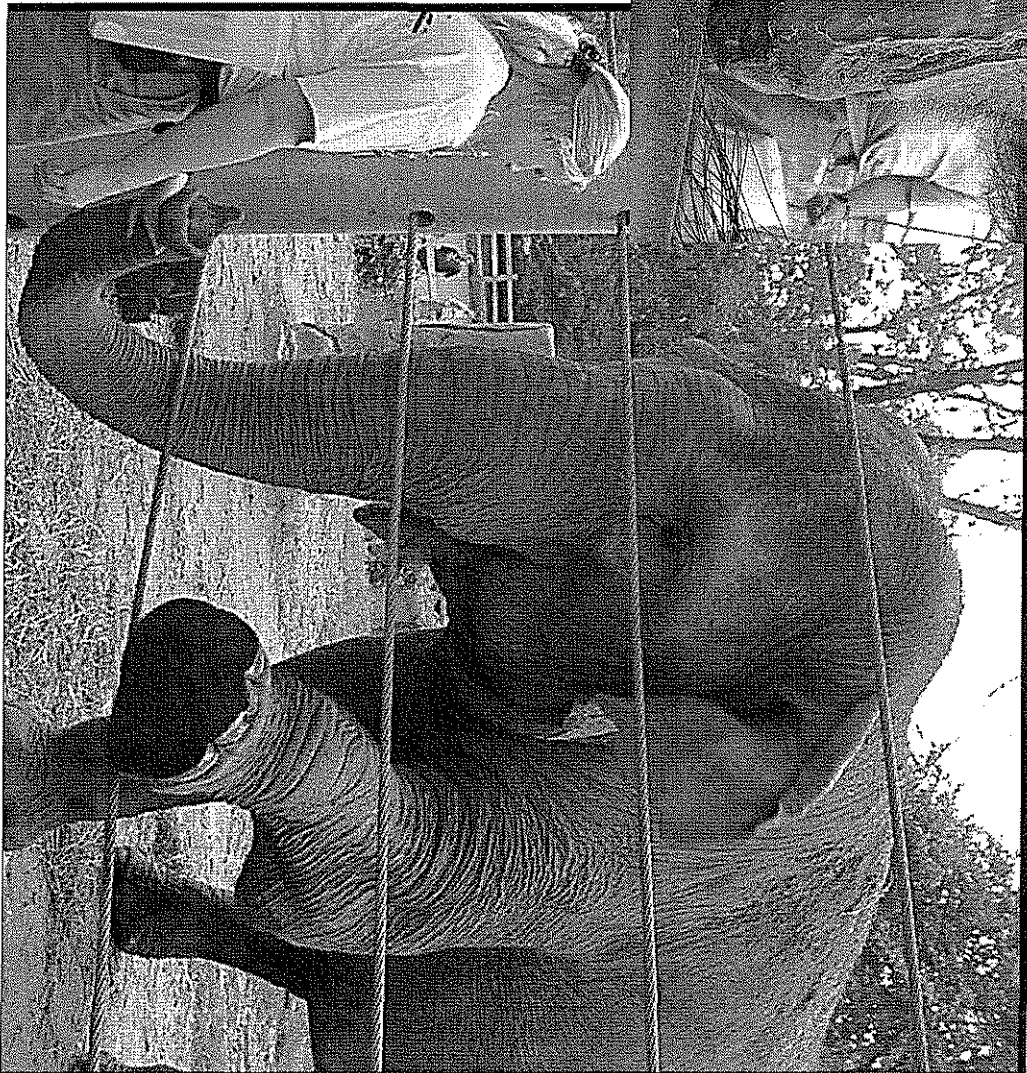


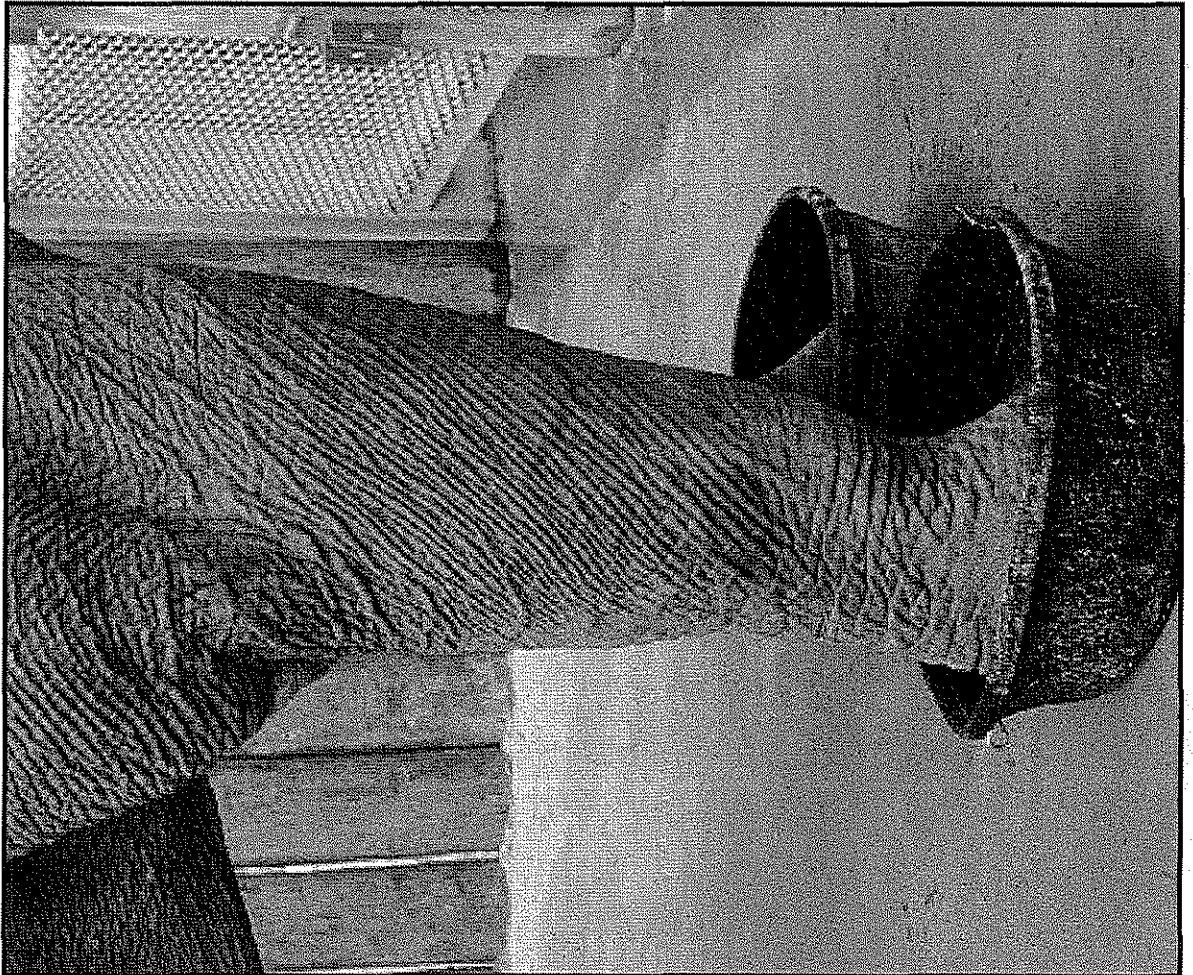
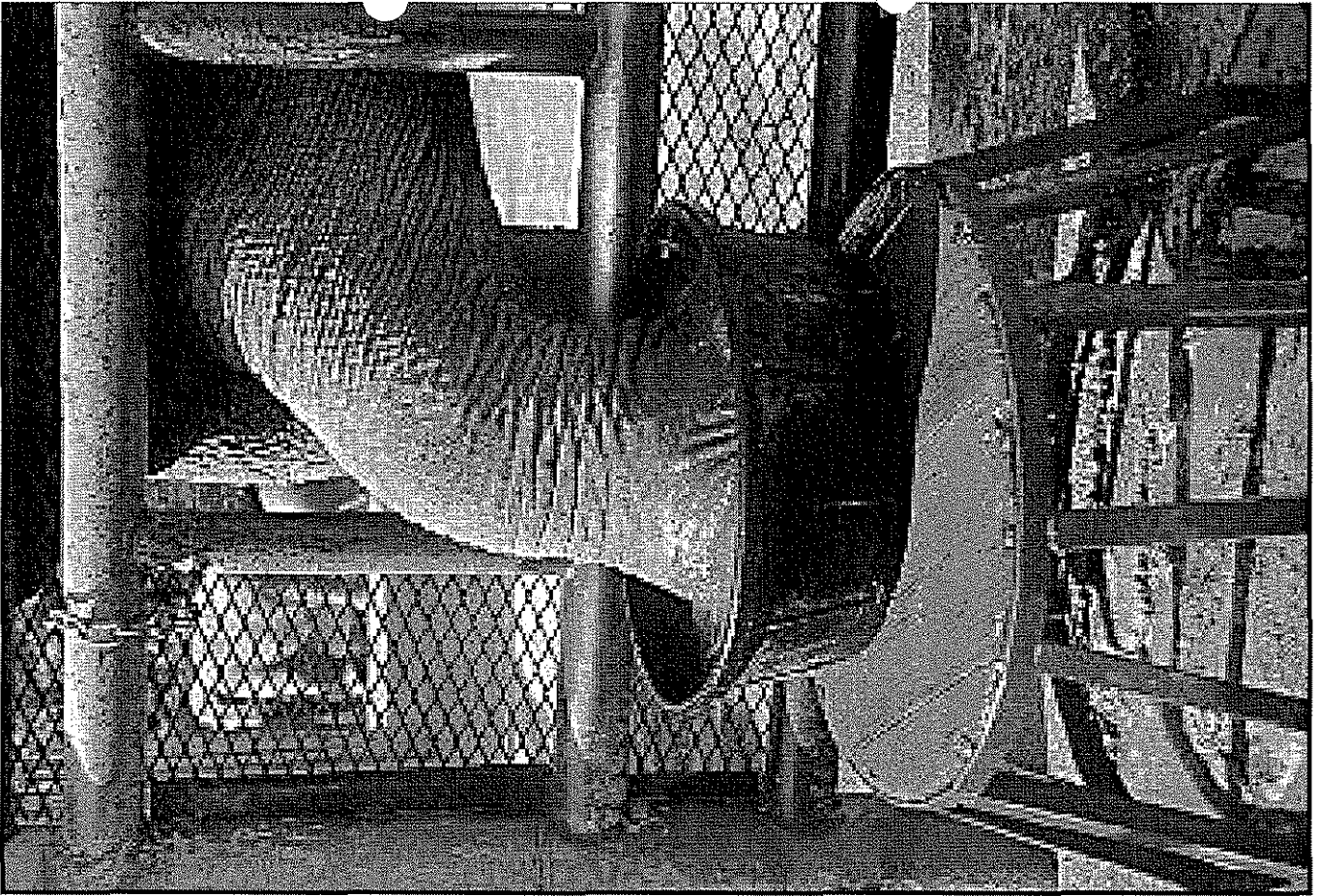




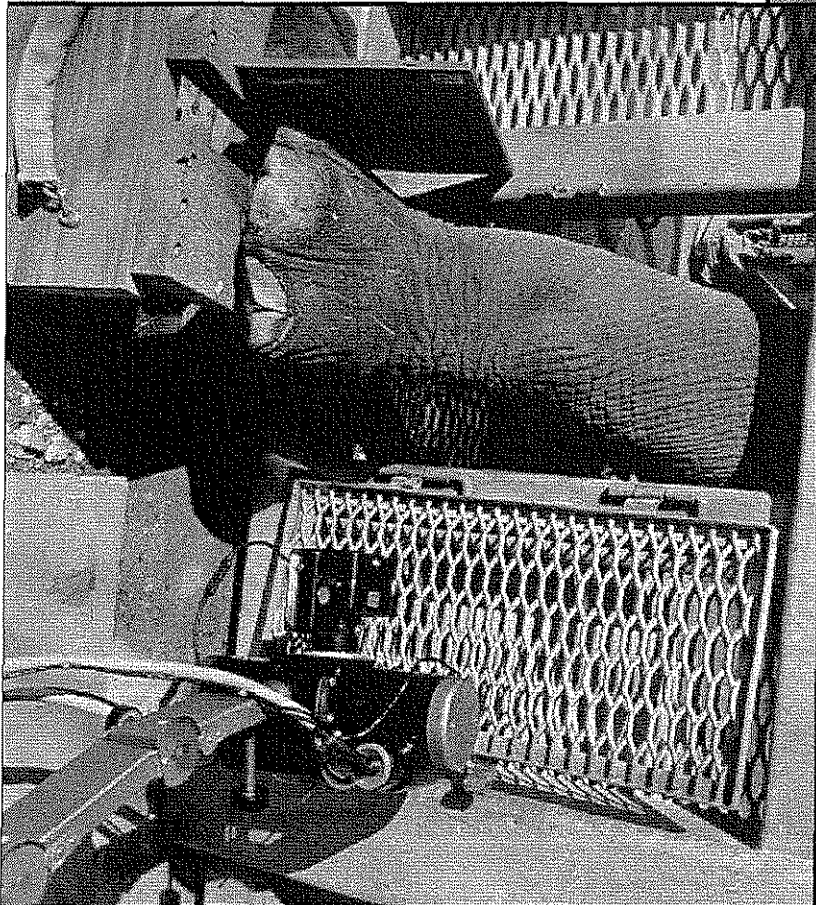
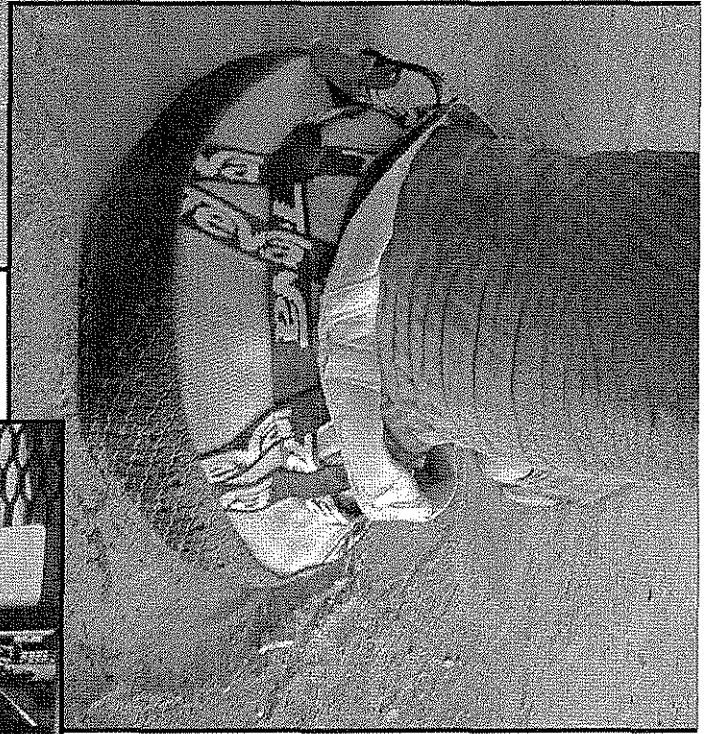
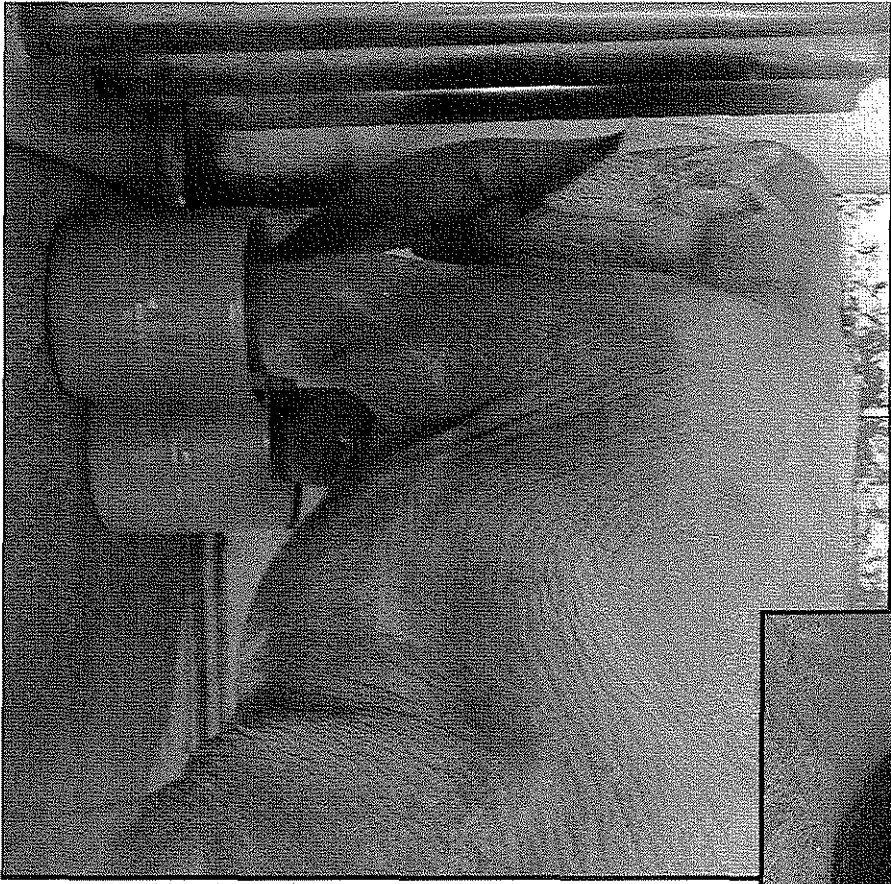
# Voluntary Cooperation for Medical Behaviors

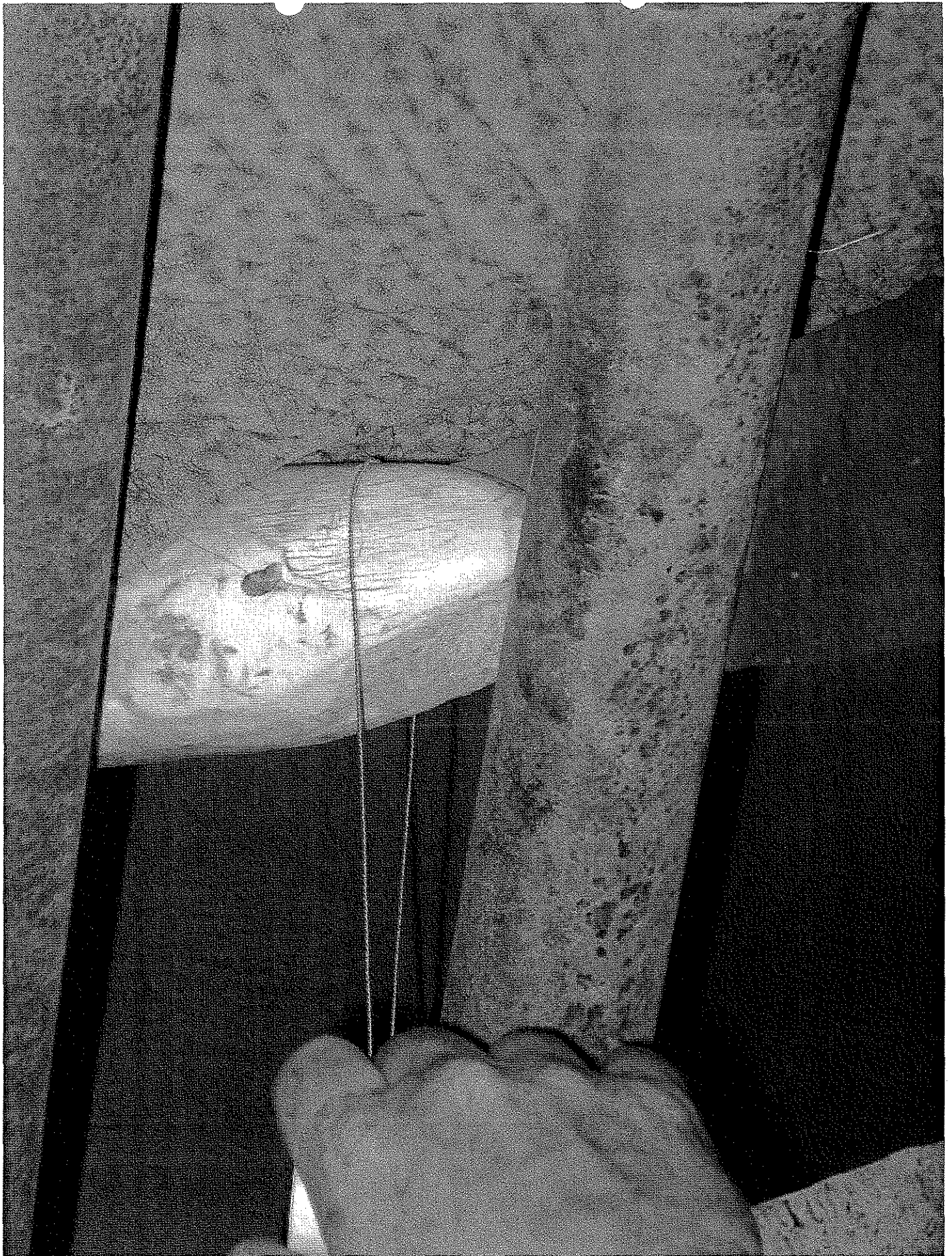




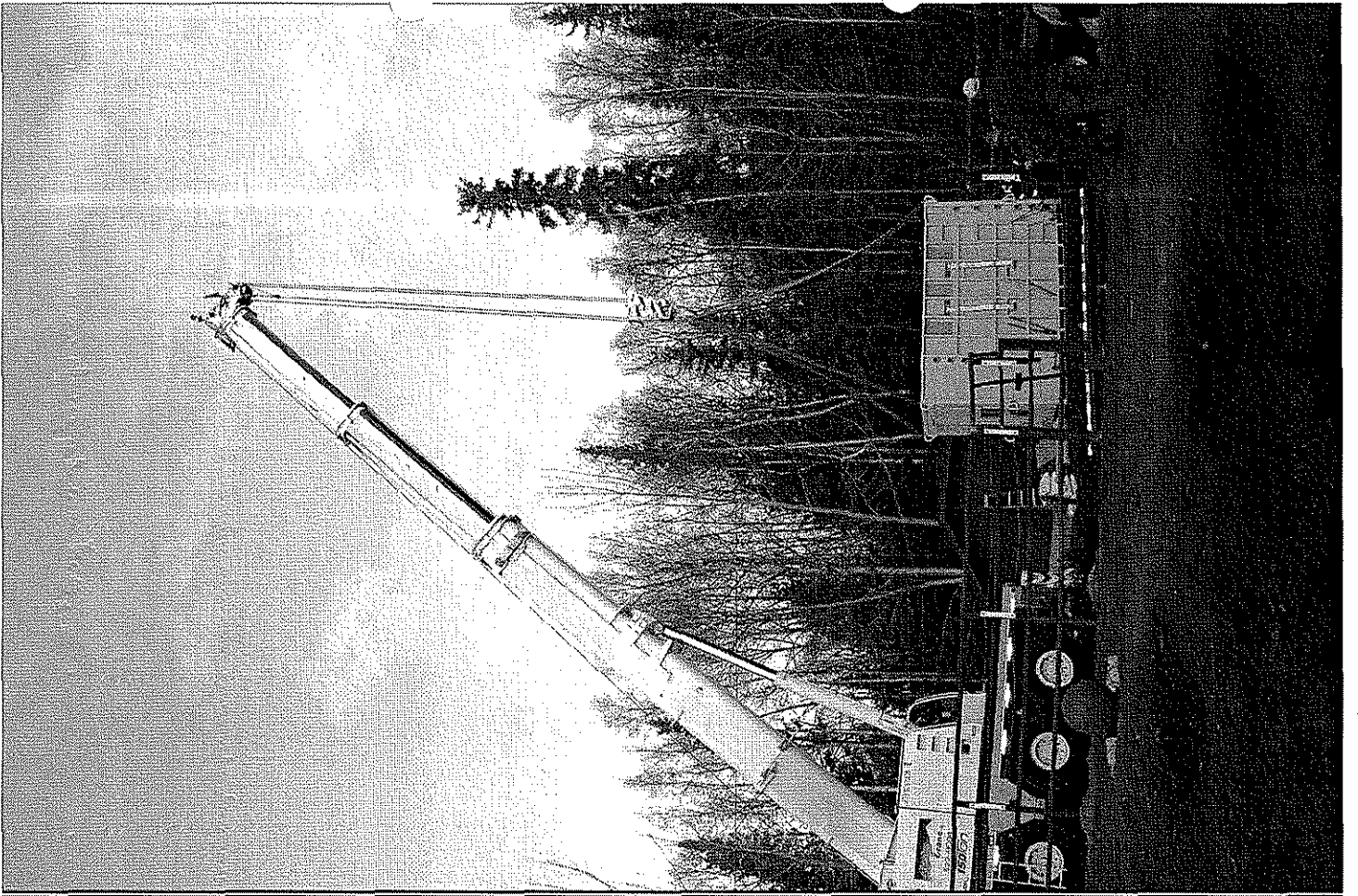












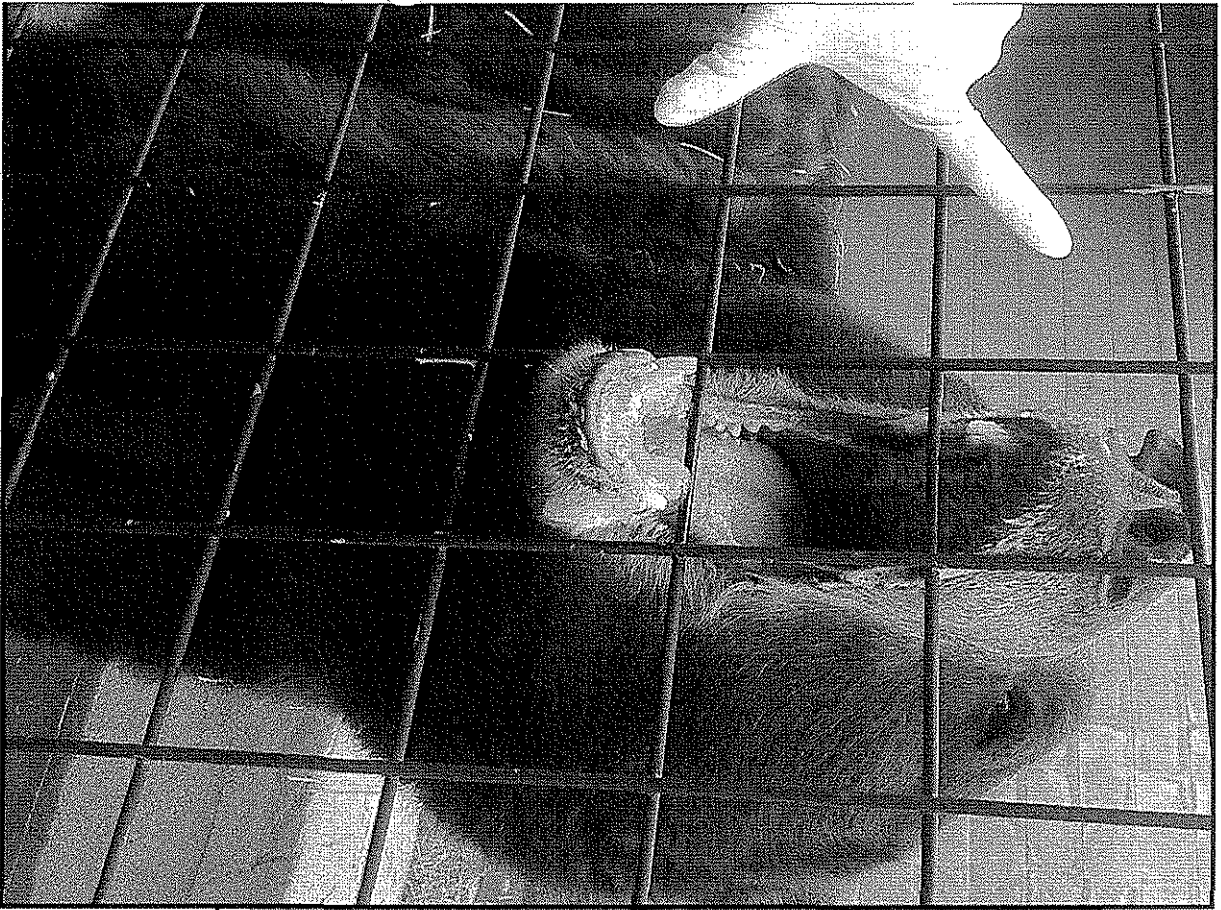


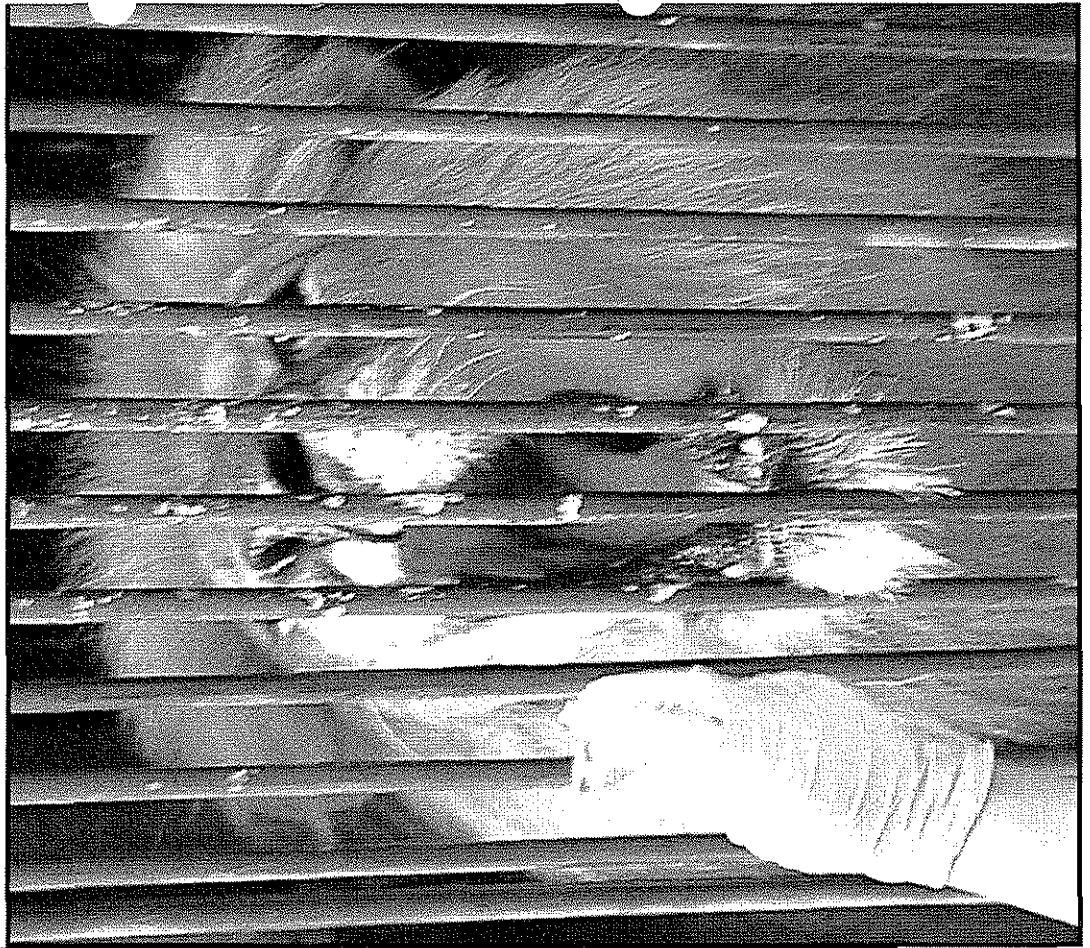












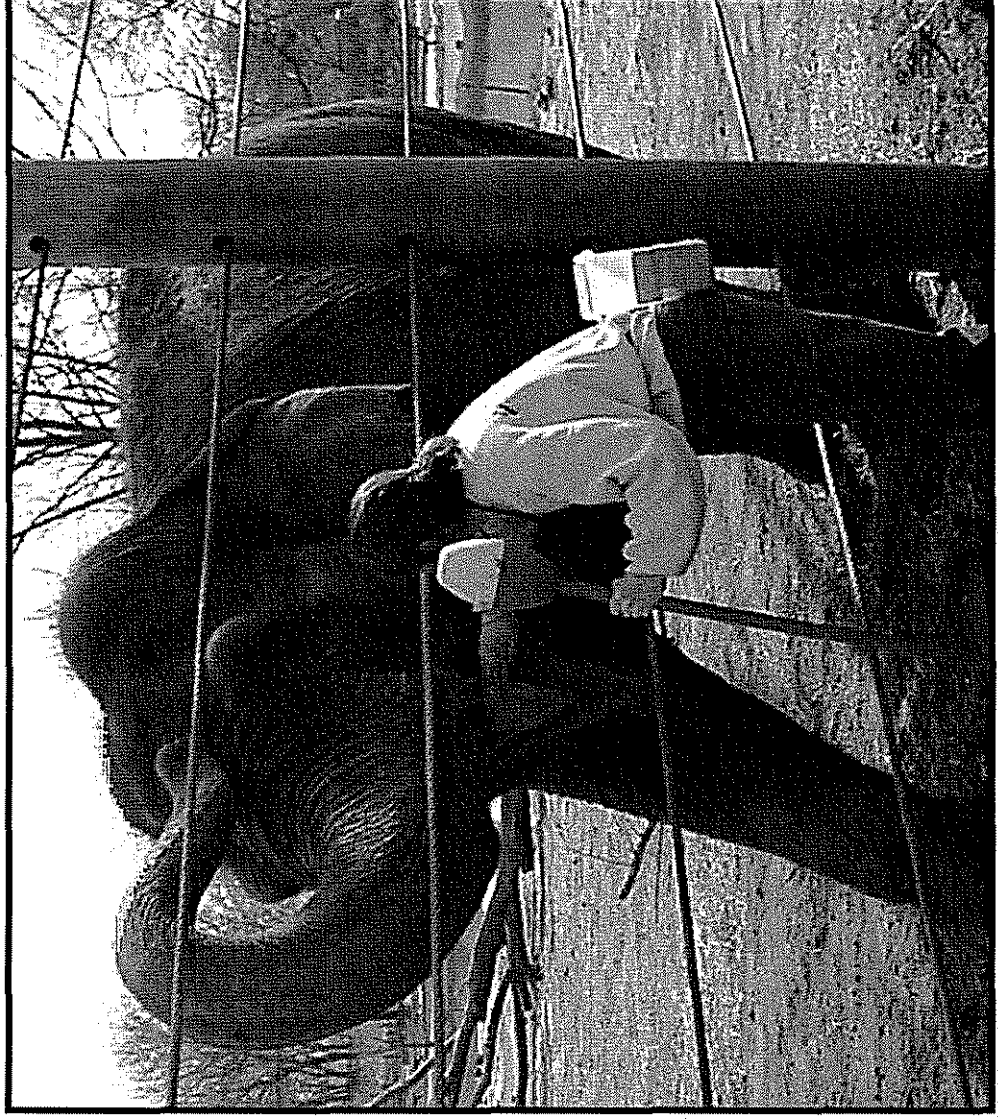
# PC Allows and Encourages. . .

- Choice and control
- Experimentation
- The opportunity to make mistakes
- And all without negative consequences



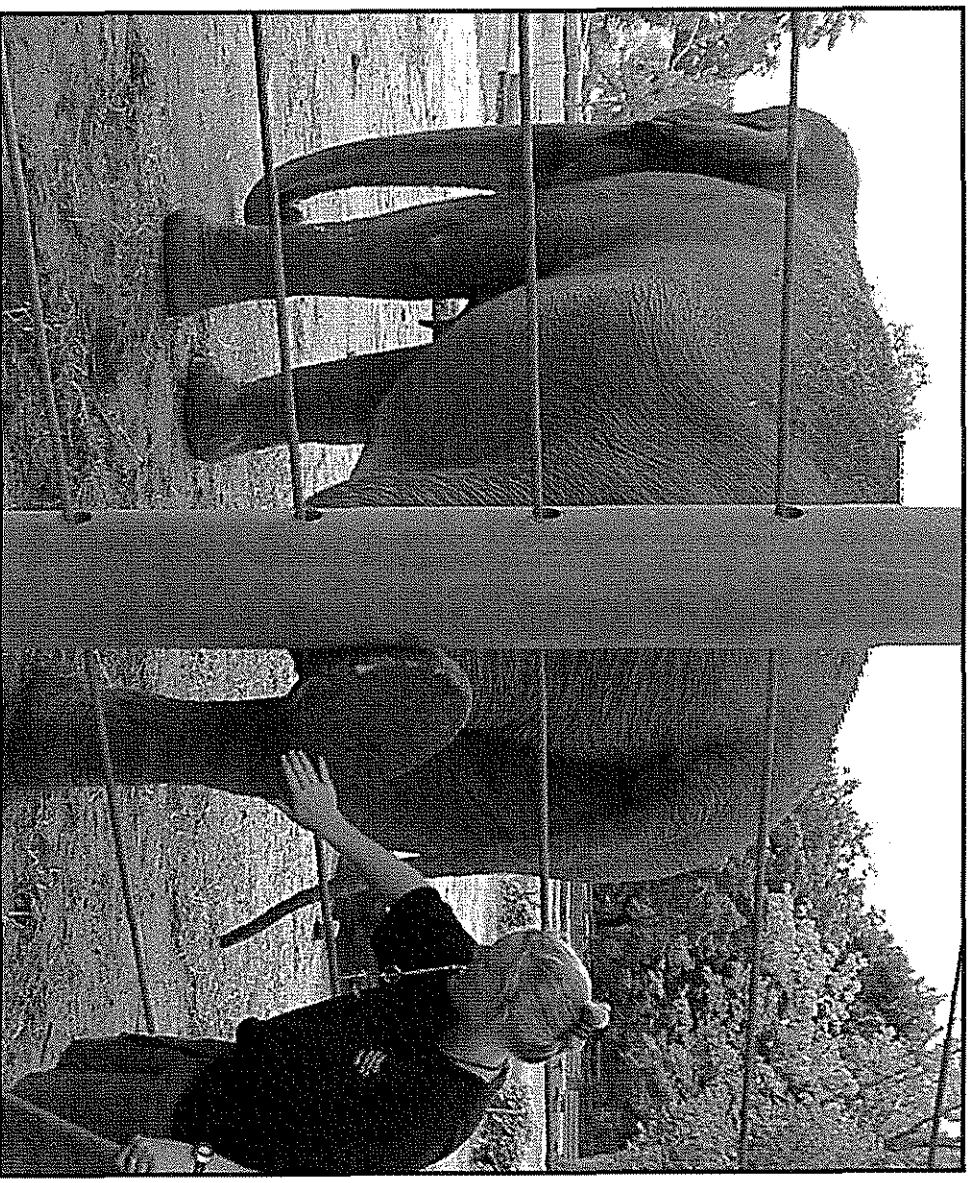
# 3 ELEMENTS OF KEEPER SAFETY

## 1. Elephant position



# 3 ELEMENTS OF KEEPER SAFETY

2. **Keeper position relative to the elephant**



# 3 ELEMENTS OF KEEPER SAFETY

## 3. Human and elephant position relative to the barrier

