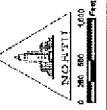


Updated Specific Plan Ordinance Map and General Plan Amendment Maps

Case No: CF 13-0285, CPC-2012-3357-GPA-SP

For consideration by PLUM and TCT Committees

April 9, 2013



031113

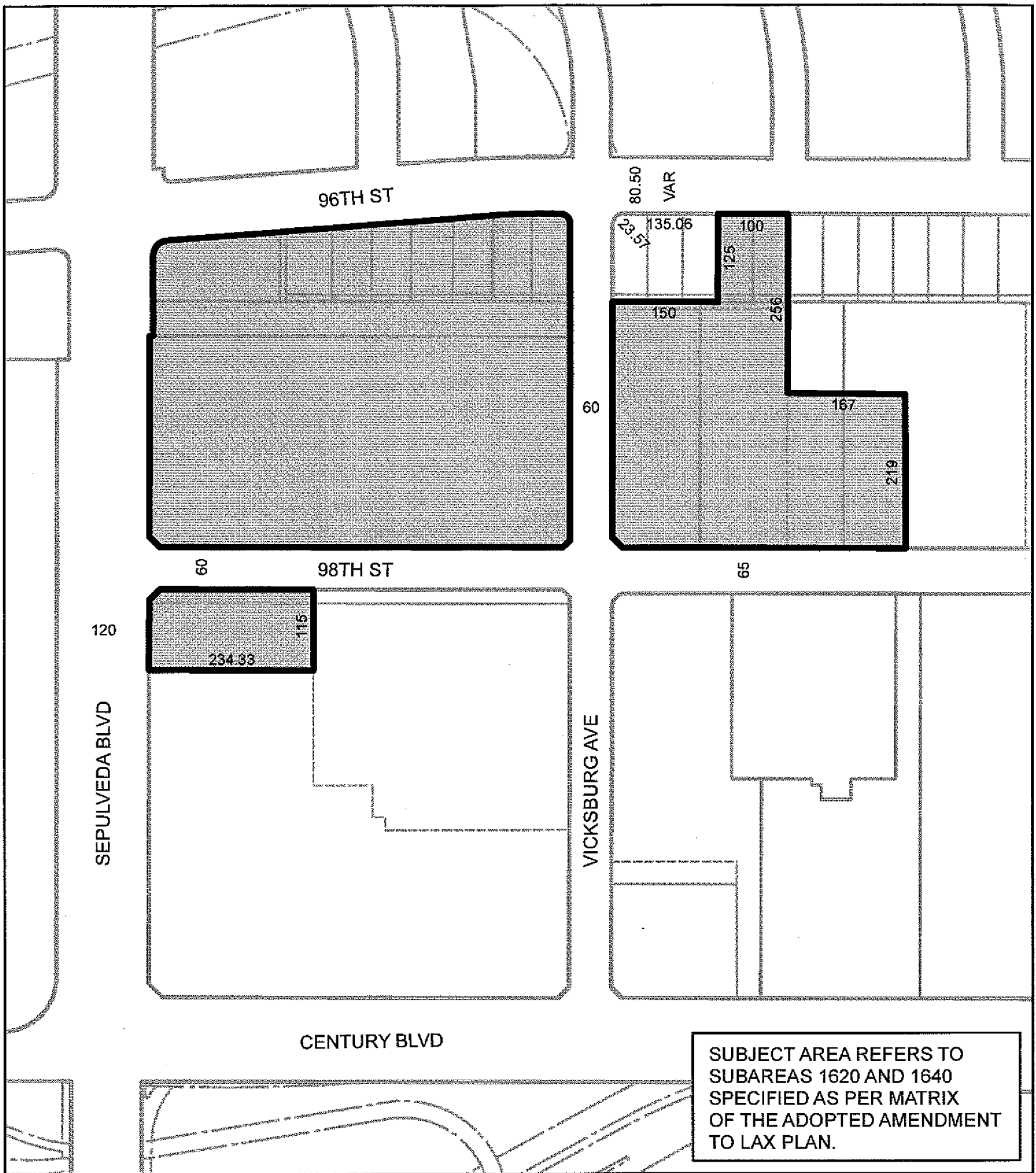
CPC 2012-3357 GPA SP

C.M. 086 B 157, 093 B 161, 098 B 165, 098 B 169, 093 B 153, 093 B 157, 093 B 161, 093 B 165,
 093 B 169, 093 B 173, 090 B 153, 090 B 157, 090 B 161, 090 B 165, 090 B 169, 080 B 173,
 087 B 153, 087 B 157, 087 B 161, 087 B 165, 087 B 169, 087 B 173

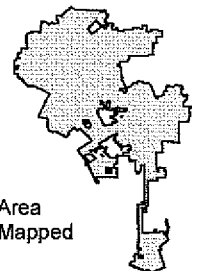
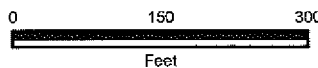
AAV

LAX SPECIFIC PLAN BOUNDARY





REGIONAL COMMERCIAL



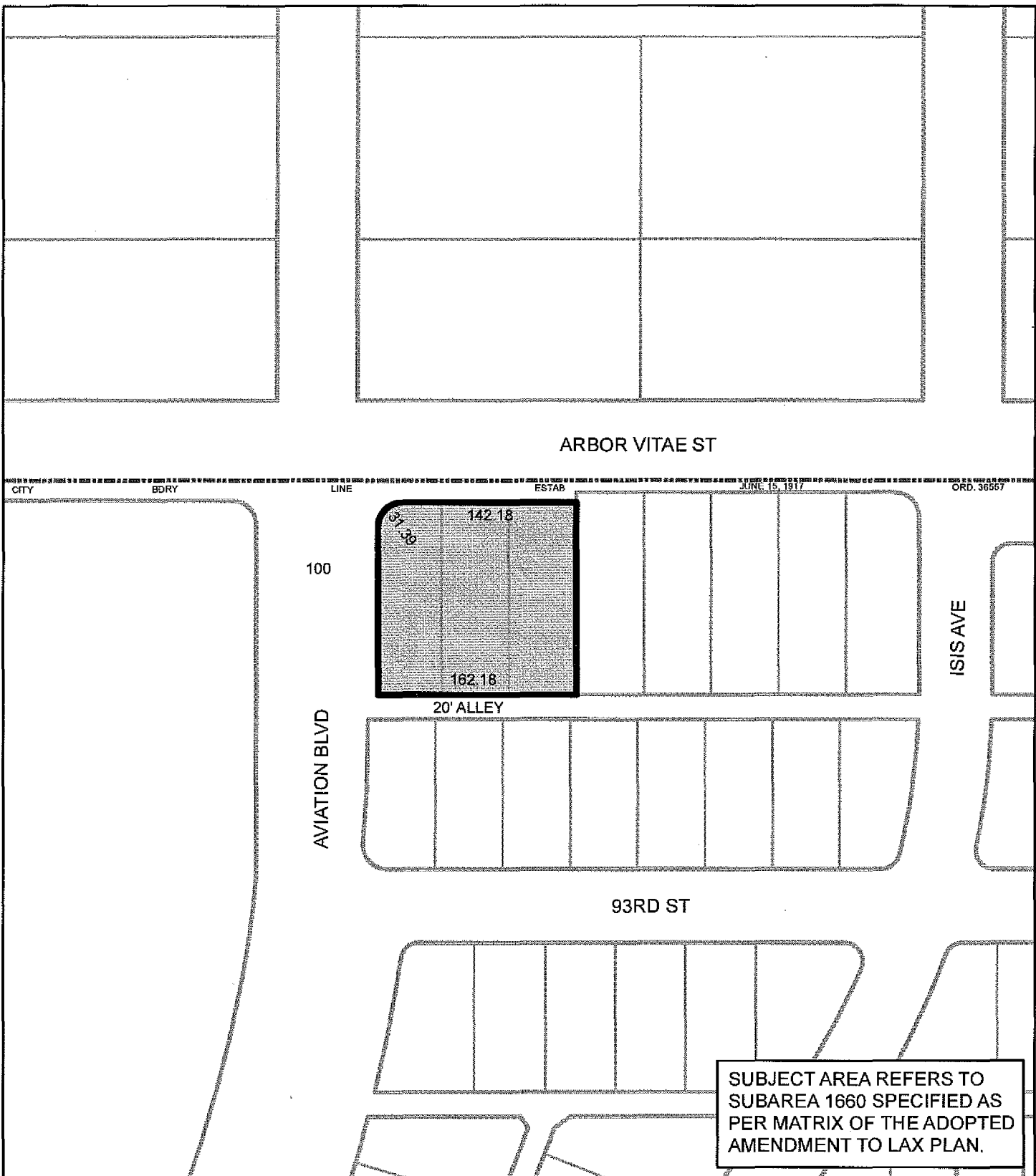
C.M. 093 B 165, 093 B 169

CPC-2012-3357-GPA-SP

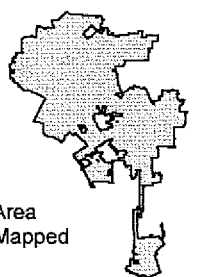
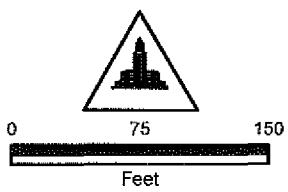
AA/

031513

GENERAL PLAN AMENDMENT WESTCHESTER - PLAYA DEL REY



 **GENERAL
COMMERCIAL**



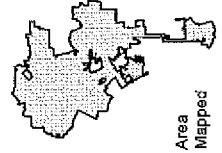
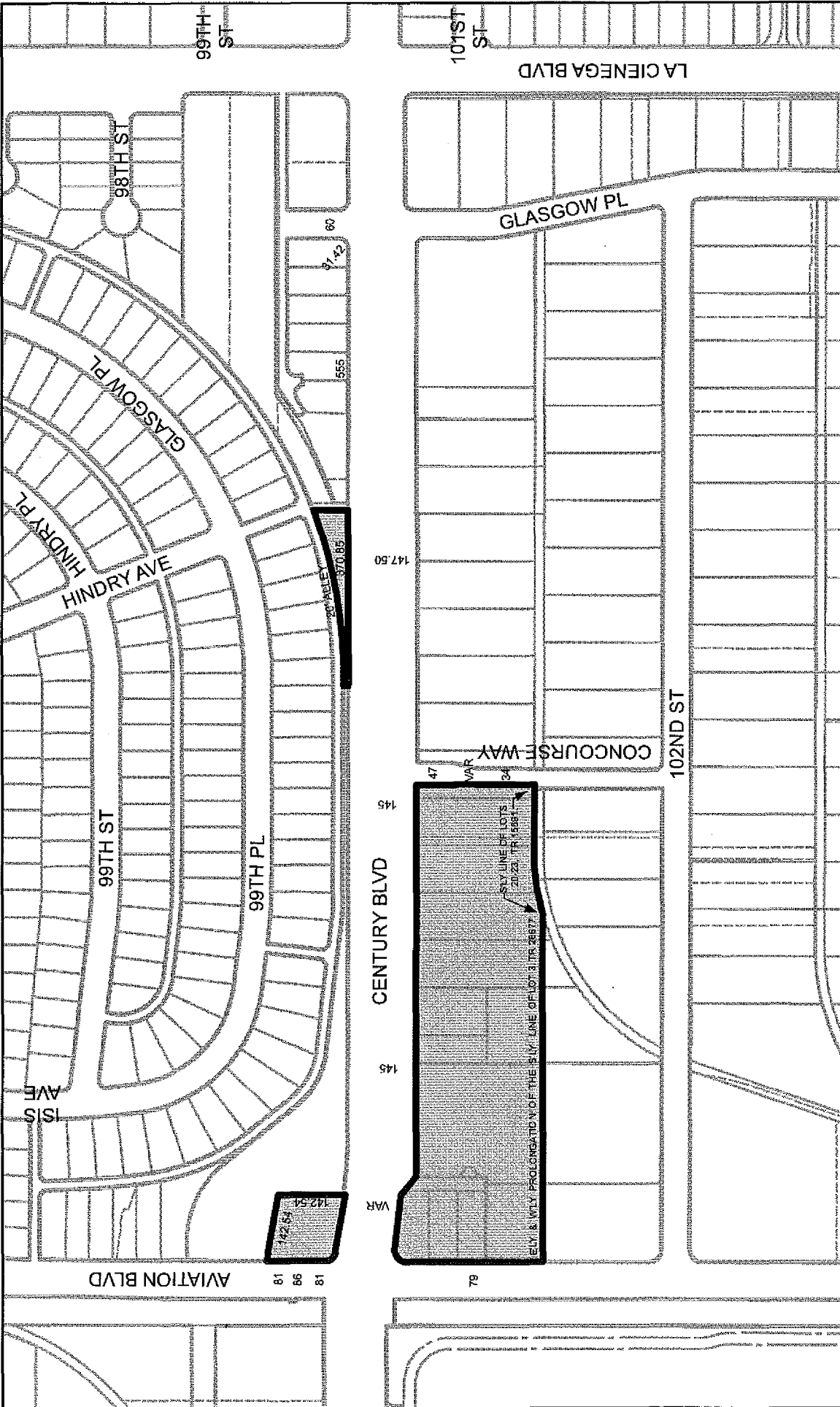
SUBJECT AREA REFERS TO
SUBAREA 1660 SPECIFIED AS
PER MATRIX OF THE ADOPTED
AMENDMENT TO LAX PLAN.



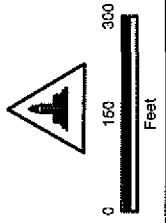
C.M. 093 B 173	CPC-2012-3357-GPA-SP
----------------	----------------------

AA/ 031513

**GENERAL PLAN AMENDMENT
WESTCHESTER - PLAYA DEL REY**



SUBJECT AREA REFERS TO
SUBAREA 1740 SPECIFIED AS
PER MATRIX OF THE ADOPTED
AMENDMENT TO LAX PLAN.

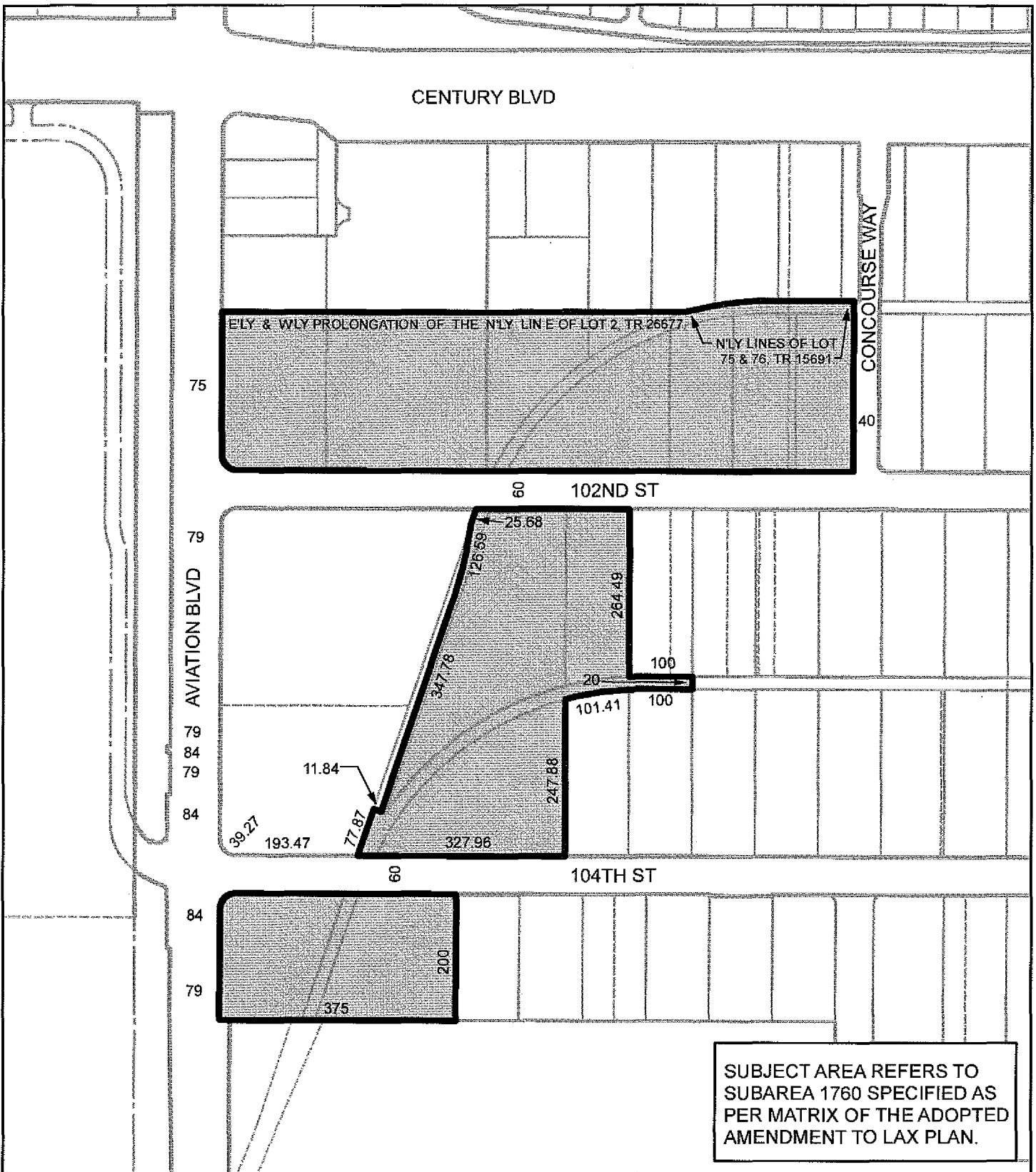


C.M. 090 B 173 CPC-2012-3357-GPA-SP
AA 032013

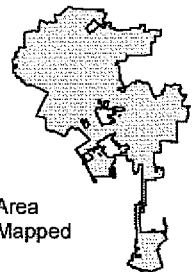
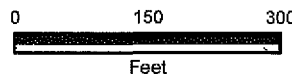
GENERAL PLAN AMENDMENT
WESTCHESTER - PLAYA DEL REY

**REGIONAL
COMMERCIAL**





 **LIGHT INDUSTRIAL**



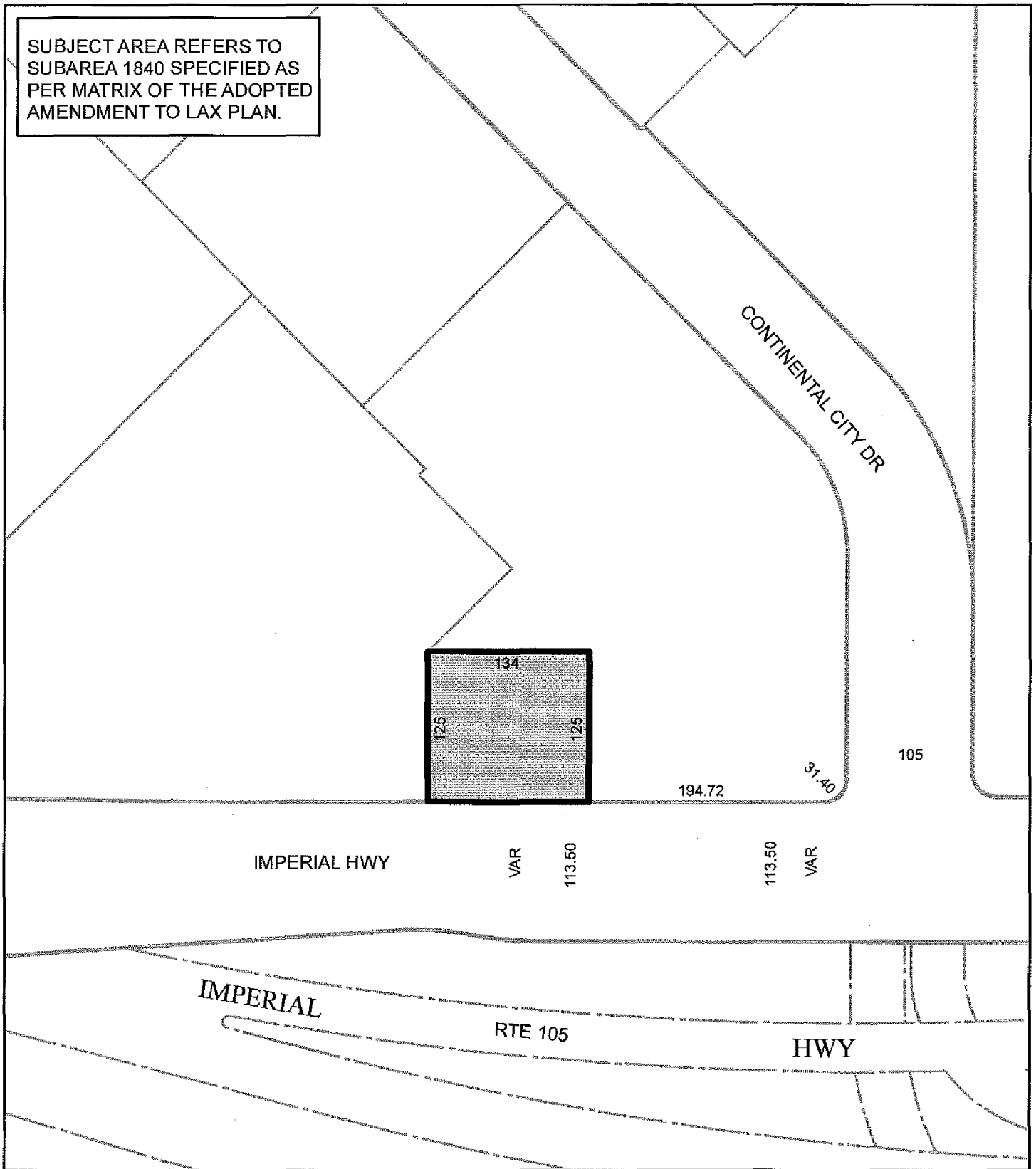
C.M. 090 B 173 | CPC-2012-3357-GPA-SP

AA/

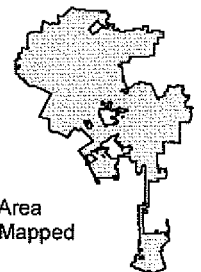
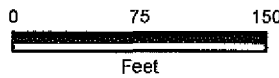
032013

**GENERAL PLAN AMENDMENT
WESTCHESTER - PLAYA DEL REY**

SUBJECT AREA REFERS TO
SUBAREA 1840 SPECIFIED AS
PER MATRIX OF THE ADOPTED
AMENDMENT TO LAX PLAN.



 **LIGHT INDUSTRIAL**



C.M. 087 B 173

CPC-2012-3357-GPA-SP

AA/

031513

GENERAL PLAN AMENDMENT
WESTCHESTER - PLAYA DEL REY