

ERIC GARCETTI  
*Mayor*

Commission  
MEL LEVINE, *President*  
WILLIAM W. FUNDERBURK JR., *Vice President*  
JILL BANKS BARAD  
MICHAEL F. FLEMING  
CHRISTINA E. NOONAN  
BARBARA E. MOSCHOS, *Secretary*

MARCIE L. EDWARDS  
*General Manager*

March 10, 2015

The Honorable City Council  
c/o Office of the City Clerk  
Room 395, City Hall  
Mail Stop 160

Attention: Councilmember Felipe Fuentes  
Chairperson, Energy and Environment Committee

Honorable Members:

Subject: Council File No. 13-1244-S1 - Technical Feasibility and Unit Cost of Recycled Water to Potential Customers in Griffith Park

This letter is in response to the December 3, 2014, motion made by Councilmembers Felipe Fuentes and Tom LaBonge, requesting the Los Angeles Department of Water and Power (LADWP) and the Los Angeles Department of Recreation and Parks (RAP) to report on the technical feasibility and unit cost to expand the use of recycled water to potential customers in Griffith Park.

## **Background**

Recycled water use in Griffith Park has reduced the City of Los Angeles' (City) potable water demand for non-potable uses. LADWP and RAP have a long history of successfully using recycled water in Griffith Park. In the early 1990s, LADWP constructed a network of pipelines, one pump station, and one two-million gallon steel storage tank within the Griffith Park area. This system, known as the Greenbelt System, delivers recycled water from the Los Angeles-Glendale Water Reclamation Plant (LAG) to customers in the central area of the City including Griffith Park. Beneficial use of recycled water is a practical, proven way to increase availability of a safe, reliable, locally-controlled water supply.

LADWP and RAP are partnering to expand the use of recycled water to additional areas within Griffith Park and have studied the technical feasibility of potential new uses. LADWP and RAP meet quarterly to coordinate recycled water work activities including

pipeline construction, meter installation, regulatory compliance, retrofit work, and cross connection testing. To the south, irrigation areas evaluated include the Nursery, Greek Theatre, and Vermont Avenue Medians. To the north, areas include the Maintenance Yard, Martinez Arena, and other areas in close proximity to the Greenbelt System. Feasible projects within the north area of Griffith Park will only require a straightforward conversion, where the irrigation areas are close to the Greenbelt line, and construction can be performed by RAP in-house crews at minimal cost. Feasible projects within the south area of Griffith Park will receive recycled water through the Griffith Park South Water Recycling Project. Sites evaluated for recycled water conversion are shown on the enclosed map, "Griffith Park Potential Irrigation Areas." Findings are summarized in Table 1. (See Enclosure.)

LADWP and RAP will continue to explore opportunities to utilize recycled water in areas where it is available and economically feasible. In addition to opportunities in Griffith Park, LADWP and RAP have set aggressive goals to get Delano Park, Branford Park, Bond Park, Woodley Park East, Bette Davis Park, North Atwater Park and Chevy Chase Park on-line with recycled water in 2015.

If you have any questions or if further information is required, please contact me at (213) 367-1338, or Ms. Winifred J. Yancy, Director of Intergovernmental Affairs and Community Relations, at (213) 367-0025.

Sincerely,

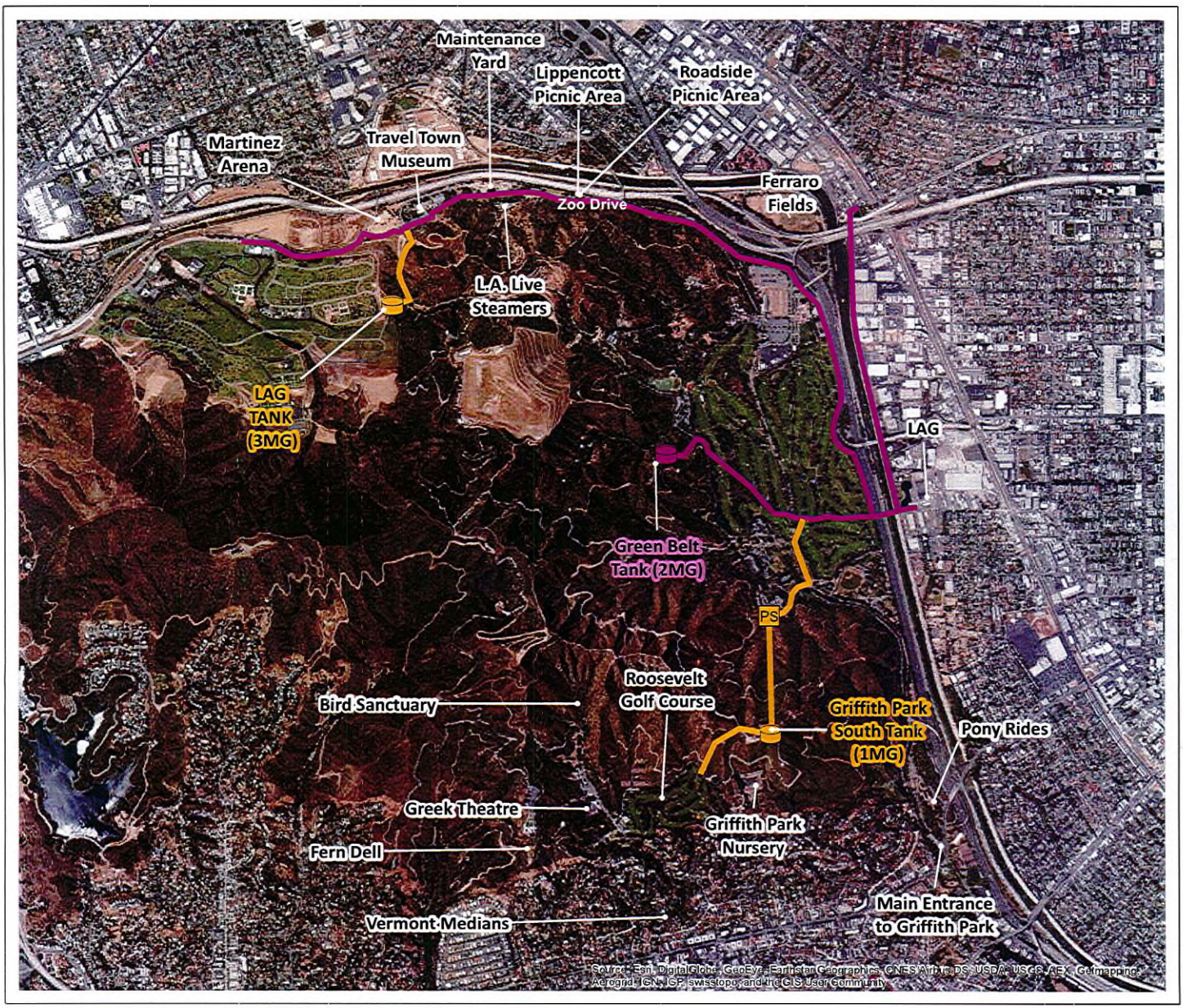


Marcie L. Edwards  
General Manager

GZ/JG

c/enc: Councilmember Bob Blumenfield, Vice-Chair, Energy and Environment Committee  
Councilmember Tom LaBonge, Member  
Councilmember Jose Huizar, Member  
Councilmember Paul Koretz, Member  
Mr. Adam R. Lid, Legislative Assistant

Ms. Winifred J. Yancy



Source: Esri, DigitalGlobe, GeoEye, Earthstar Geographics, CNES/Airbus DS, USDA, USGS, AeroX, GeoMapping, AeroGRID, IGN, IGP, swisstopo, and the GIS User Community

## Griffith Park Potential Irrigation Areas

### Existing Facilities

- Tank
- Pipeline

### Planned Facilities

- Tank
- PS
- Pipeline



13-1244-51

08 4

MOTION

Maximizing the beneficial use of recycled water to offset potable water demand is a critical strategy in addressing water supply and water conservation. There is an urgency to maximize this strategy given the severe drought and the continuing impacts of climate change on our water resources.

Griffith Park is the largest municipal park with urban wilderness in the United States. The Los Angeles Department of Water and Power (LADWP) is planning the expansion of its recycled water distribution network in Griffith Park via the Griffith Park South Water Recycling Project (GPSWRP). The GPSWRP will provide recycled water to the Roosevelt Golf Course.

Possibilities exist to expand the delivery of recycled water to the Griffith Park Nursery, the Greek Theatre, Maintenance Yard, Old Maintenance Yard, Martinez Arena, and other areas along the existing and proposed recycled water pipelines in Griffith Park.

As Los Angeles Department of Recreation and Parks (RAP) continues to develop areas and make improvements throughout the Park, there may be opportunities for the installation of additional pipelines to cost-effectively extend LADWP's recycled water network to these areas. This will require coordination between LADWP and RAP, which can potentially lead to providing recycled water to these areas of the Park sooner and at a lesser cost than if the agencies worked independently.

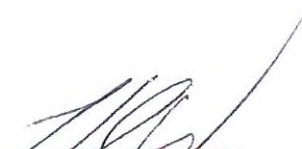
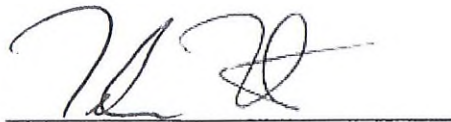
I THEREFORE MOVE that LADWP coordinate with RAP and explore the technical feasibility and unit cost to expand the use of recycled water to potential customers in Griffith Park and report back to Council in 90 days regarding any findings that would increase the use of recycled water.

PRESENTED BY:



TOM LABONGE  
Councilmember, 4<sup>th</sup> District

SECONDED BY:

  
DEC 03 2014

ORIGINAL

**Table 1 - Griffith Park Potential Irrigation Areas**

Site	Feasible	Potable offset AFY	Required Length of Pipe (feet)		Cost (million)	Summary of findings
Martinez Arena	YES	Individual water meters do not exist onsite to identify consumption history.	0	from proposed LADWP meter	minimal	Recycled water for dust control will be provided to the area through a straightforward conversion scheduled for summer 2015.
Travel Town Museum	NO	Individual water meters do not exist onsite to identify consumption history.	n/a	n/a	n/a	Irrigation lines would be difficult to separate from domestic lines.
Maintenance Yard	YES	Individual water meters do not exist onsite to identify consumption history.	0	from proposed LADWP meter	minimal	Recycled water for irrigation will be provided to this area through a straightforward conversion scheduled for summer 2015.
Lippencott Picnic Area	NO	Individual water meters do not exist onsite to identify consumption history.	n/a	n/a	n/a	Area will undergo turf reduction. Irrigation will no longer be needed.
Los Angeles Live Steamers	NO	Individual water meters do not exist onsite to identify consumption history.	n/a	n/a	n/a	Irrigation lines would be difficult to separate from domestic lines.
Roadside Picnic Area	YES	Individual water meters do not exist onsite to identify consumption history.	0	from proposed LADWP meter	minimal	Recycled water for irrigation will be provided to this area through a straightforward conversion scheduled for summer 2015.
Ferraro Fields	NO	Individual water meters do not exist onsite to identify consumption history.	n/a	n/a	n/a	Will be converted to artificial turf. No recycled water is needed.
Main Entrance to Griffith Park from Los Feliz Boulevard and Pony Rides	NO	Individual water meters do not exist onsite to identify consumption history.	7,000 ft	from Green Belt System	\$4.0	No recycled water pipelines exist near this area. Alternatively, RAP will be installing a smart irrigation system in this area fall 2015.
Griffith Park Nursery	YES	45.75 AFY	0	from proposed LADWP meter	minimal	Recycled water will be available to this area with the completion of the GPSWRP in 2017.
Roosevelt Municipal Golf Course	YES	310 AFY	6800 ft	from existing Green Belt system	\$18.0	Recycled water will be delivered to this area with the completion of the GPSWRP in 2017.
Vermont Medians	NO	10.75 AFY	500 ft	from intersection of Vista del Valle Drive & Commonwealth Canyon Drive	\$0.27	The irrigation system at these locations is routinely damaged from vehicular traffic. Ponding of recycled water from damaged lines would violate County Department of Public Health use guidelines, and discharge into the storm drain system would violate LADWP's discharge permits.
Greek Theatre	NO	7.25 AFY	600 ft	from intersection of Vista del Valle Drive & Commonwealth Canyon Drive	\$0.32	This site is not recommended for recycled water installation due to the high cost.
Bird Sanctuary	NO	10 AFY	2210 ft	from intersection of Vista del Valle Drive & Commonwealth Canyon Drive	\$1.19	This site is not recommended for recycled water installation due to the high cost and environmental impacts.
Fern Dell	NO	0 AFY	2000 ft	from Bird Sanctuary	\$1.17	This site is not recommended for recycled water installation due to the high cost and environmental impacts.