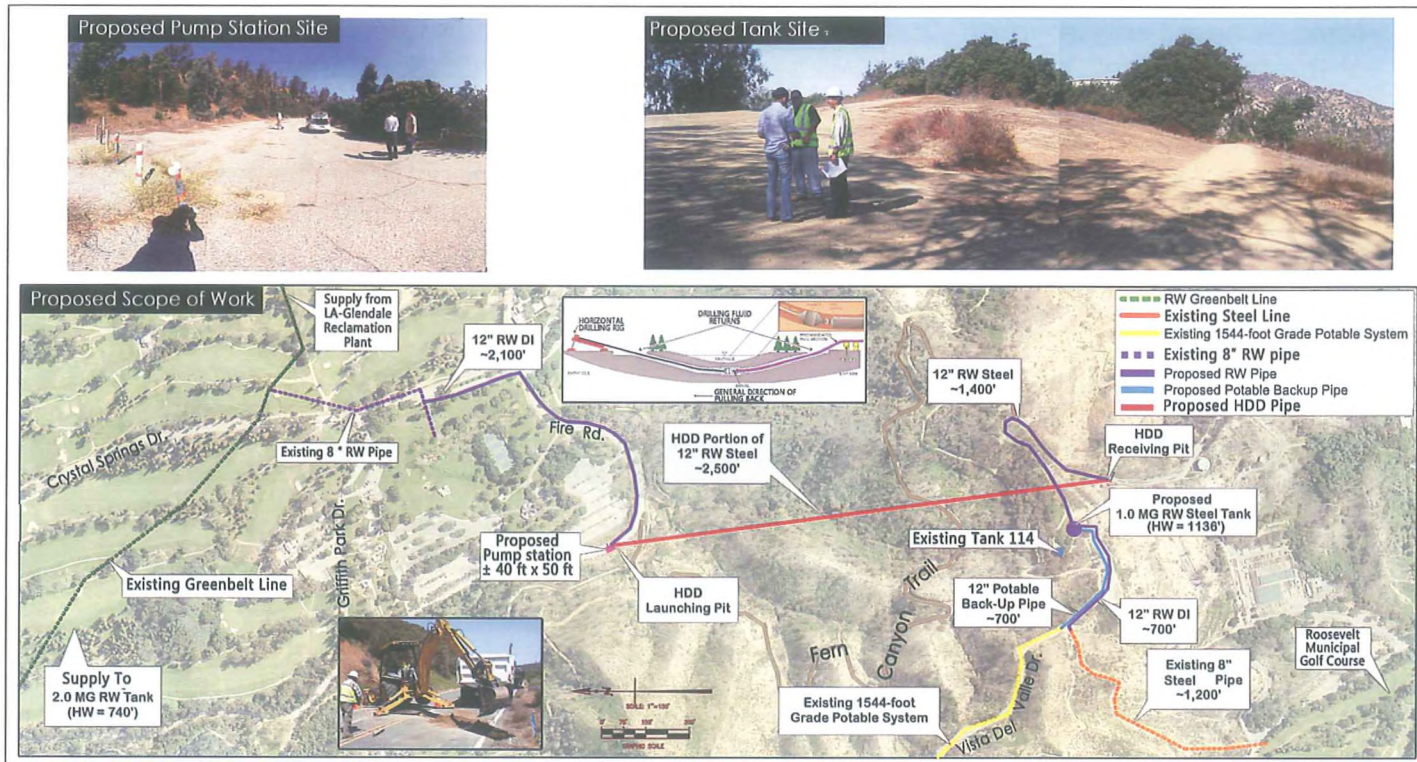


Date: 4/28/14
 Submitted in NPMA Committee
 Council File No. 13-1244
 Item No.: 11
 Deputy: Adam R. Lid

Griffith Park South Water Recycling Project (GPSWRP)

Project Map



Project Objectives

The purpose of the GPSWRP is to extend the existing recycled water system to the southern facilities of Griffith Park to increase recycled water supply and offset the demand of potable water in Central Los Angeles. LADWP has identified Roosevelt Golf Course as a prime customer for recycled water as the golf course currently uses potable water for irrigation. The GPSWRP will provide 370 Acre-feet per year (120.56 million gallons per year) of recycled water used for irrigation at the Roosevelt Golf Course and future areas of expansion within Griffith Park.

Project Scope of Work

Recycled water supply originates at the Los Angeles/Glendale Water Reclamation Plant via the existing 30-inch diameter Greenbelt line. The GPSWRP will connect to the Greenbelt line in the park and supply the park facilities. The scope of work for the project is divided in to three components.

1. **Pipeline:** Installation of new 12 inch diameter pipeline. The pipeline will be installed using 2 different methods of construction.
 - o **Cut-and-Cover:** Simple method of construction where a trench is excavated and the pipe is placed. Approximately 4,900 feet of pipe will be installed using the cut-and-cover method.
 - o **Horizontal Directional Drilling (HDD):** Trenchless method of installing underground pipes by using a surface-launched drilling rig, with minimal impact on the surrounding area. Approximately 2,500 feet of pipe will be installed using the HDD method.

Griffith Park South Water Recycling Project Fact Sheet

2. **Pump Station:** The pump station will provide a peak flow rate of 1,400 gallons per minute (gpm). The new location of the pump station is at the foot of Fern Canyon Trail. The pump station is approximately 50 feet by 40 feet in size.
3. **Tank:** A new 1-million gallon steel water storage tank will be constructed adjacent to the site of the existing Tank 114. Tank 114 will be demolished. The proposed tank has an estimated radius of 38 feet and a height of 35 ft.

The components of the project scope have been located in collaboration with the Los Angeles Department of Recreation and Parks (LARAP) and community groups to ensure park activities and spaces are not negatively impacted.

Proposed Milestones:

The following are the estimated project milestones:

Phase	Estimated Start	Estimated Finish
Planning	July 2009	January 2013
Design	January 2013	December 2014
Construction		
Pipeline (In-house Construction)	April 2014	February 2017
Pump Station - Tank (In-house Construction)	August 2015	October 2015
HDD Pipe (Contract)	November 2015	February 2017
Required In-Service Date		
MWD Local Resources Program Grant	March 2017	

Environmental:

Environmental documentation was prepared to ensure community stakeholder input was considered and implemented. The GPSWRP Notice of Intent and the Mitigated Negative Declaration can be found at <http://www.ladwp.com/envnotices>.

LADWP Contact Information

For additional information regarding this project, please contact the following:

- **Project Manager:**
Charles Ngo • (213) 367-2319 • Charles.Ngo@ladwp.com
- **Assistant Project Manager:**
Johan Torroledo • (213) 367-2296 • Johan.Torroledo@ladwp.com
- **LADWP Public Affairs-Community Relations Office**
Stephanie Spicer • (213) 367-1314 • Stephanie.Spicer@ladwp.com

Project Website

- www.LADWP.com/GPSWRP

**GPSWRP
Proposed Scope of Work**

