



Gensler

SCIENCE

Accelerate collaboration

COMMUNITY

*Celebrate LA Harbor
Communities*



BUSINESS

Create jobs

EDUCATION

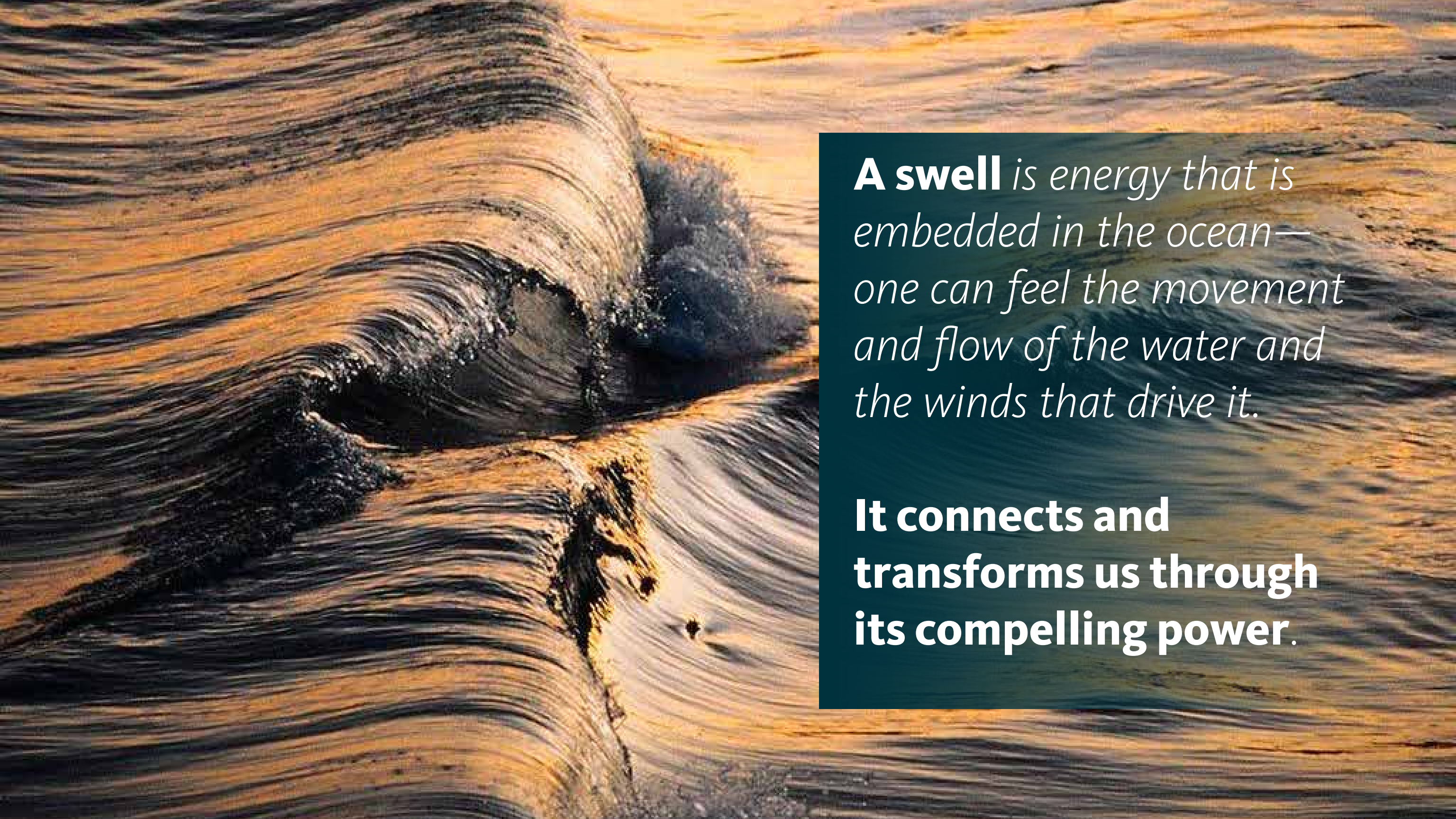
*Inspire the next
generation*

*A place of
**inspiration,
discovery,
education,**
and application
for future
generations*





Transforming
the relationship
between the
land, the ocean
and the wind
into a visceral
experience...

An aerial photograph of the ocean showing several large, parallel swells. The water is a mix of dark blue and golden-brown, with white foam visible in the troughs between the waves. The perspective is from a high angle, looking down at the rhythmic patterns of the sea.

A swell is energy that is embedded in the ocean— one can feel the movement and flow of the water and the winds that drive it.

It connects and transforms us through its compelling power.



*...and that energy is
recorded on the land
which it touches and
transforms:*

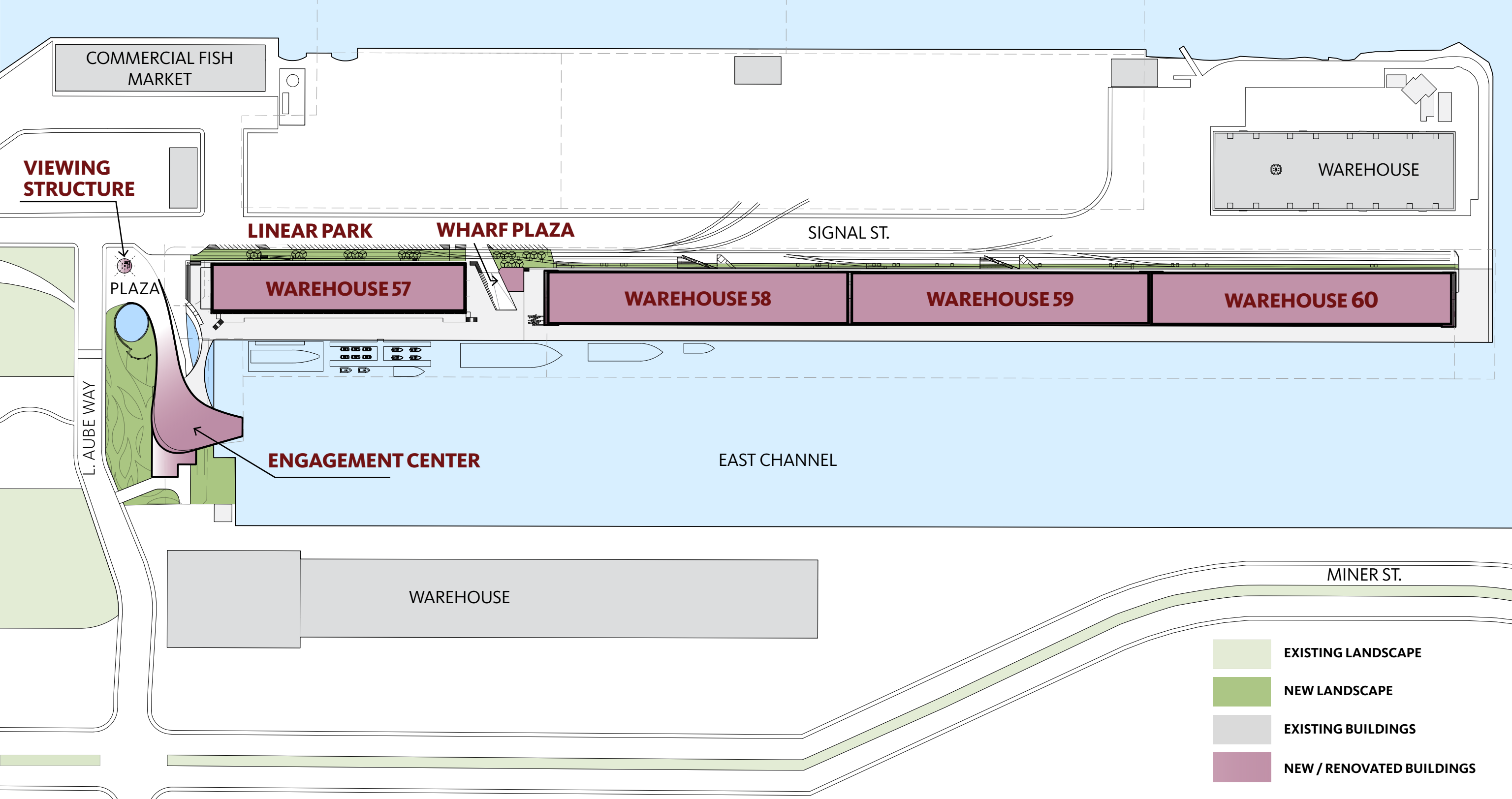


that experience is...





ALTSEA OVERALL CAMPUS



ALTASEA OVERALL CAMPUS

- EXISTING LANDSCAPE
- NEW LANDSCAPE
- EXISTING BUILDINGS
- NEW / RENOVATED BUILDINGS



BERTH 56 ENGAGEMENT CENTER



BERTH 56 ENGAGEMENT CENTER



BERTH 56 ENGAGEMENT CENTER



BERTH 56 ENGAGEMENT CENTER



BERTH 56 ENGAGEMENT CENTER & WAREHOUSE 57 SCIENCE HUB



WAREHOUSE 57 SCIENCE HUB *EXISTING*



WAREHOUSE 57 SCIENCE HUB



WAREHOUSE 57 SCIENCE HUB

A close-up, artistic photograph of the sun, showing bright, radiating rays of light in shades of orange and yellow, creating a warm and glowing effect.

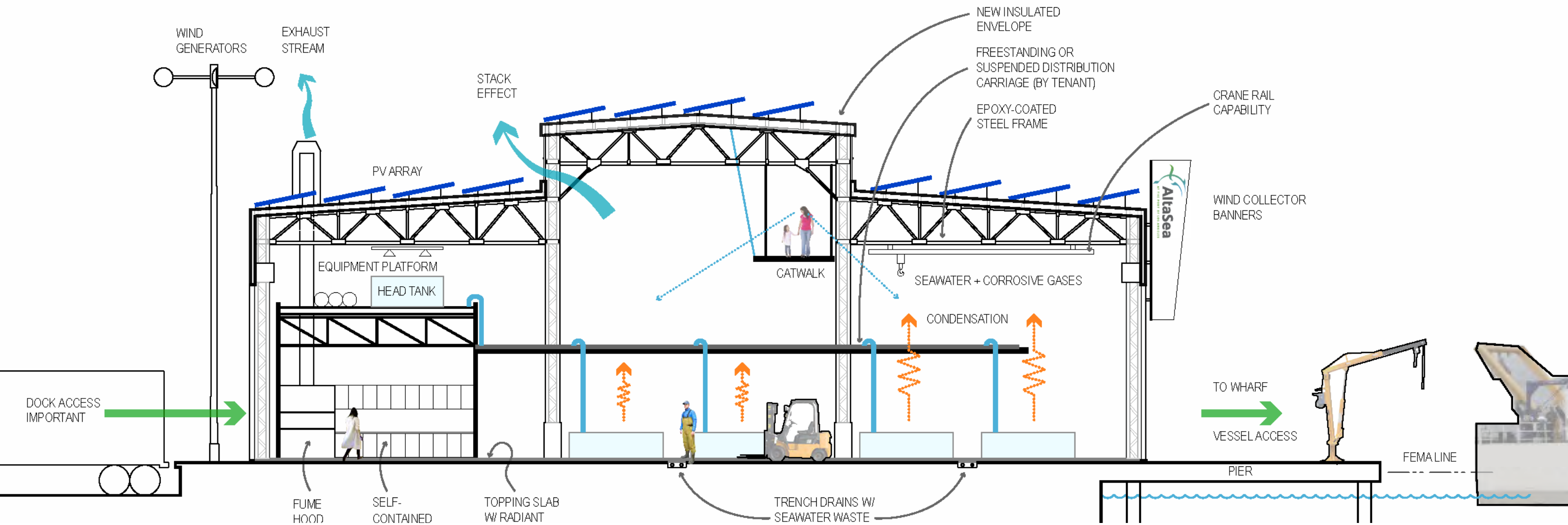
SUN

A photograph of a palm tree with its fronds blowing in the wind against a clear blue sky. The fronds are curved and appear to be in motion, conveying a sense of breeze or wind.

WIND

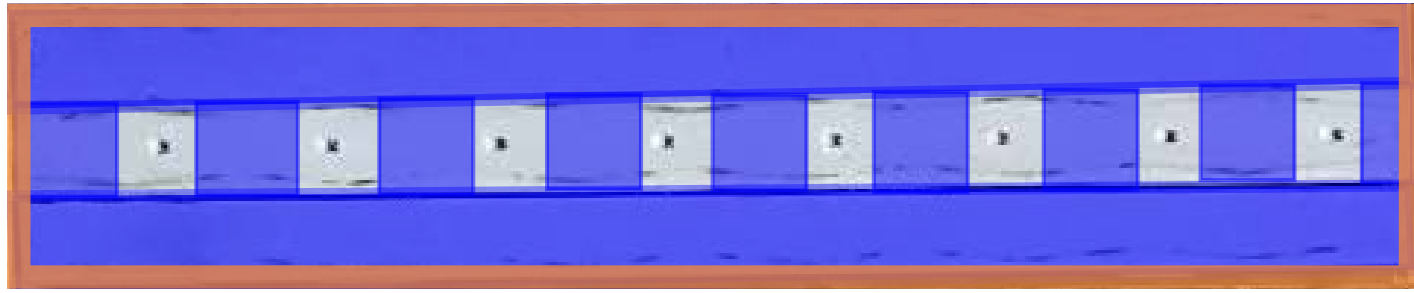
A photograph of a large, powerful wave crashing, with white foam and spray visible against a dark, overcast sky. The water is a deep blue-grey color, and the overall scene is dramatic and turbulent.

SEA



NET POSITIVE STRATEGIES

1+MW
Photovoltaic System



ROOFTOP PHOTOVOLTAIC STRATEGIES

EVOLUTION OF THE LIGHTHOUSE

Once a beacon of light in the night, now harvesting daylight to power the future

1874
POINT FERMIN LIGHT



1913
ANGELS GATE LIGHT



2019
ALTASEA TOWER

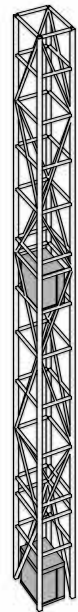


ROOTS IN THE SAN PEDRO COMMUNITY

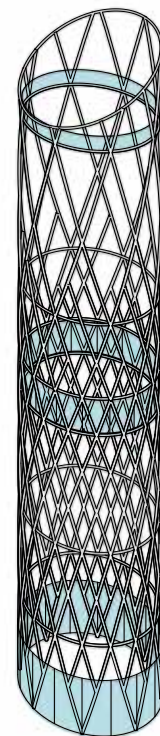
Technology in the structure will study the climate as well as report on the energy use and generation of the campus as a whole.



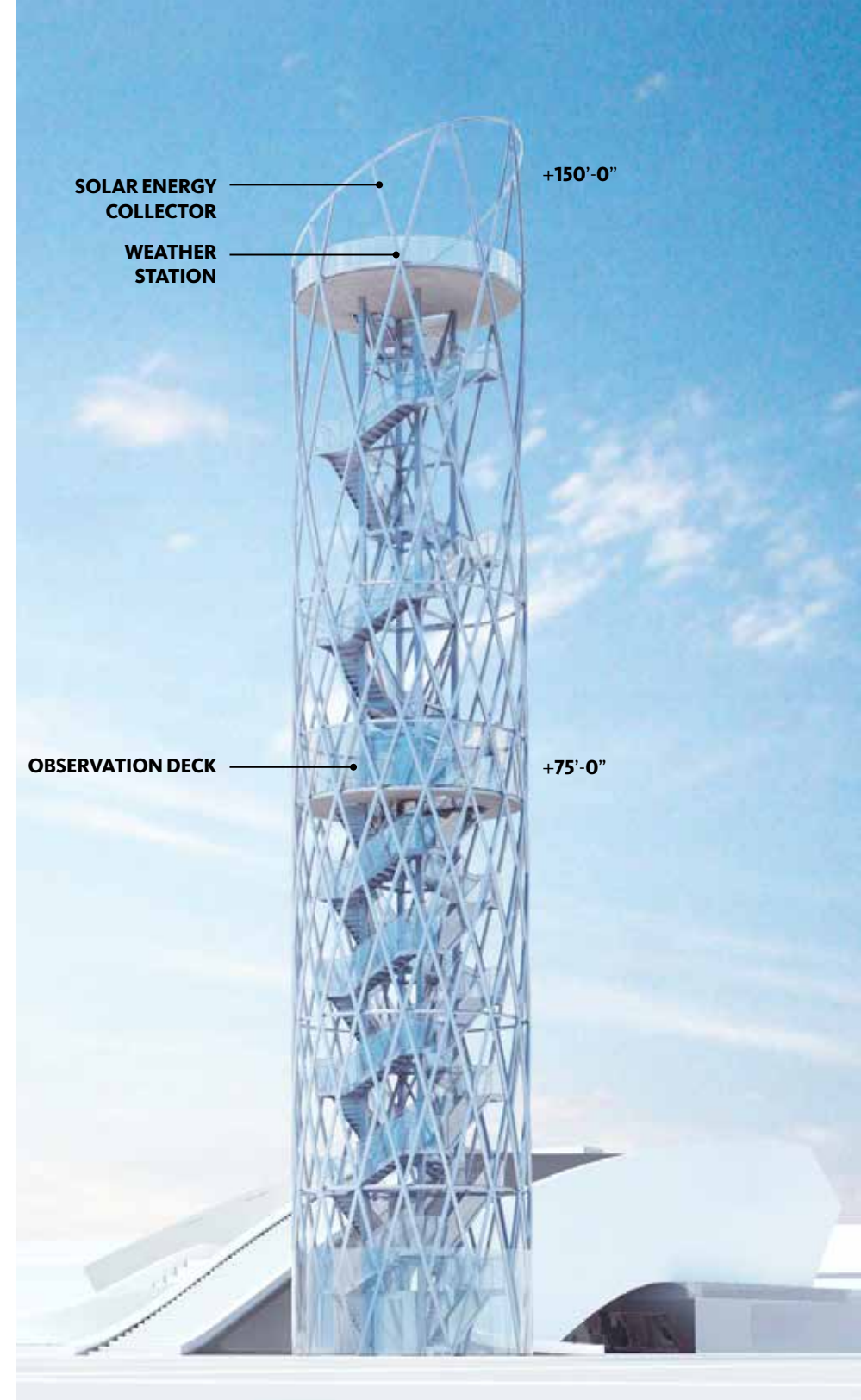
**STAIRS + VIEWING
AND ENERGY DECKS**



**CORE STRUCTURE +
ELEVATOR**



**PRIMARY STEEL
STRUCTURE**



ALTASEA TOWER SUSTAINABILITY STRATEGIES



OBSERVATION DECK



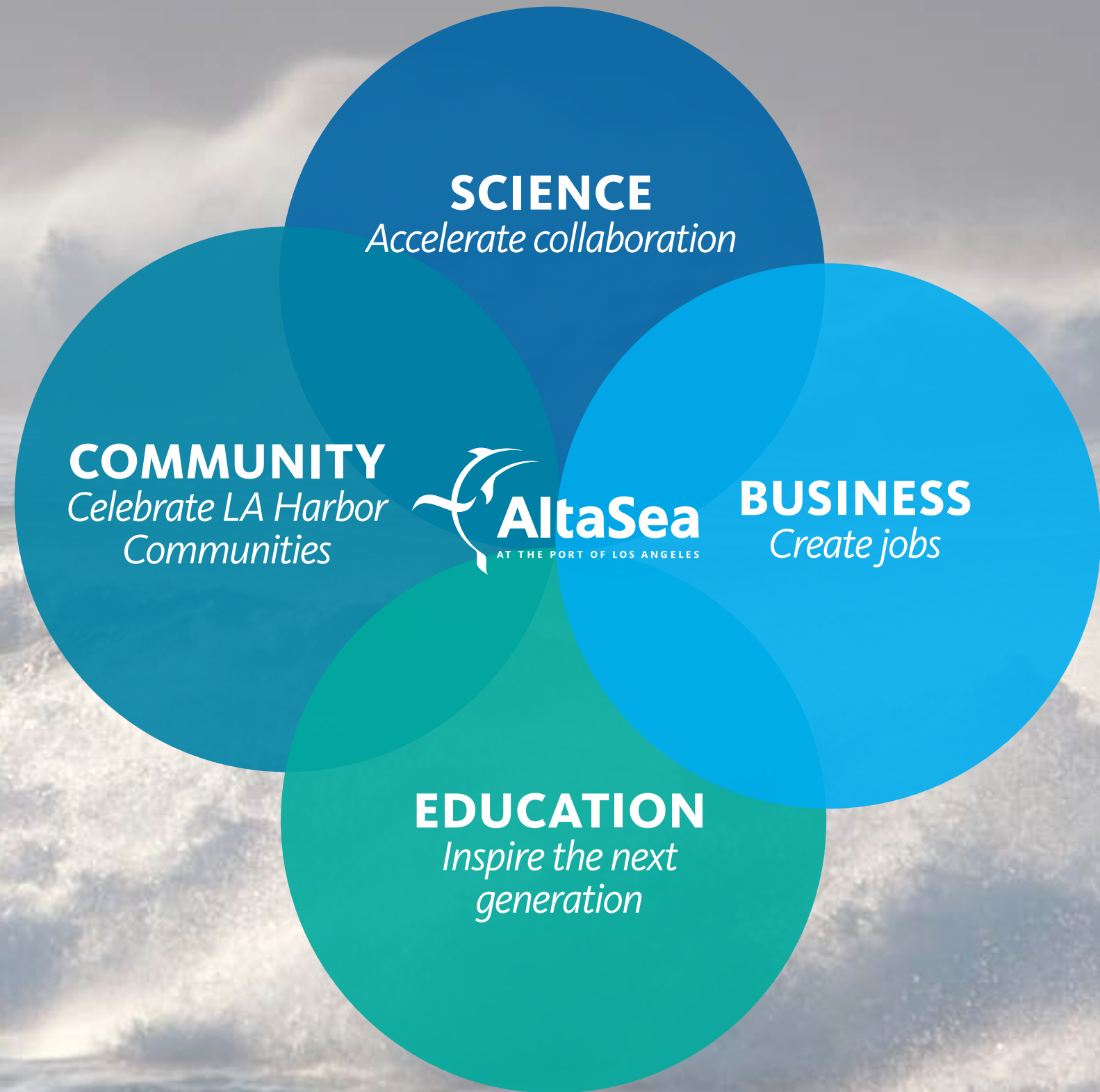
BERTH 56 ENGAGEMENT CENTER & WAREHOUSE 57 SCIENCE HUB

OCEAN RESEARCH



Gensler

Our vision is an ocean that will **sustain future generations**



SCMI and Program Partners



Initial Clusters

**Sustainable
Aquaculture**

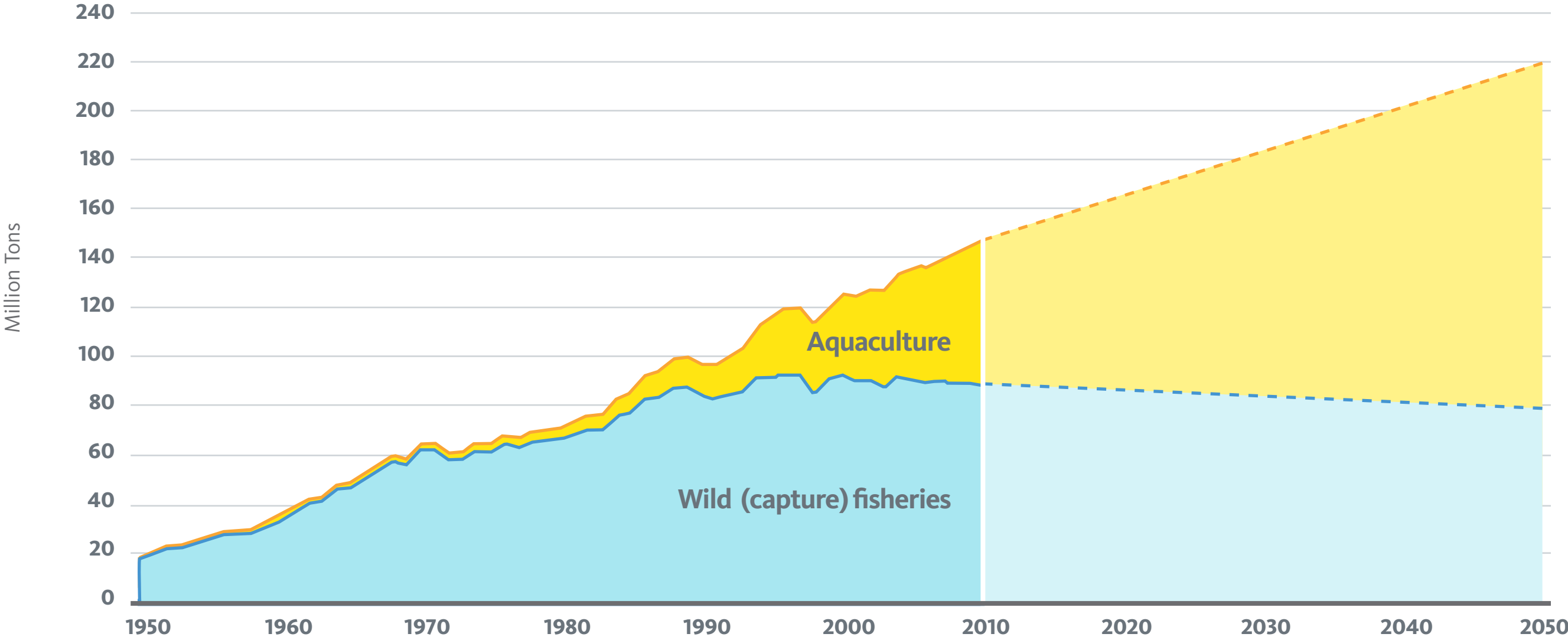


**Blue Tech:
Underwater Robotics**



Sustainable Aquaculture: Food Security

Aquaculture is expanding to Meet World Fish Demand



Sustainable Aquaculture



California Waters Suitable for Aquaculture



Sustainable Aquaculture



Initial Clusters

**Sustainable
Aquaculture**



**Blue Tech:
Underwater Robotics**



Blue Tech: Underwater Robotics



Challenge:

Ocean

Understanding

AQUACULTURE



Challenge:

Ocean Understanding **ENERGY**



Challenge:

Ocean

Understanding

CONSERVATION



Blue Tech: Underwater Robotics



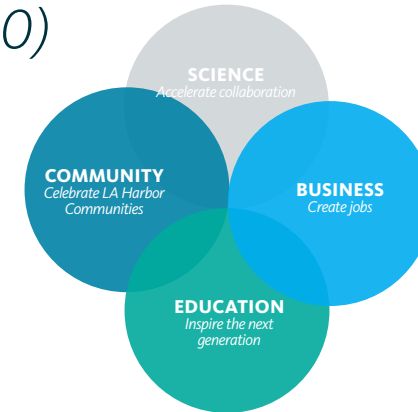
DEVELOPMENT APPROACH & FUNDING NEEDS



Research and Business Clusters (Warehouses 58-60) Wharf Plaza and Educational Pavilion

2015-2017

- Construction of the Wharf Plaza and Educational Pavilion
- Renovation of 180,000-square-feet of free-span space in warehouses 58-60 for business and research clusters



\$35m

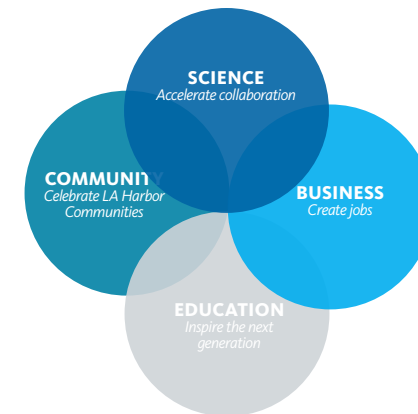
\$13 million obtained!



Science Hub (Warehouse 57)

2017-2020

- Transformation of Warehouse 57 into a new state-of-the-art research facility known as the Science Hub, SCMI's new home



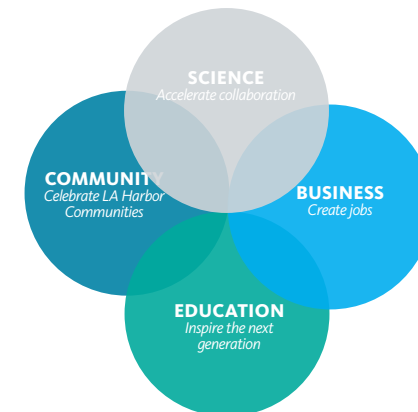
\$50m



Education Hub — Engagement Center

2019-2023

- Construction of a modern education facility known as the Engagement Center, that will serve as a global beacon for ocean research



\$65m

\$150 million total



AltaSea

AT THE PORT OF LOS ANGELES

Gensler