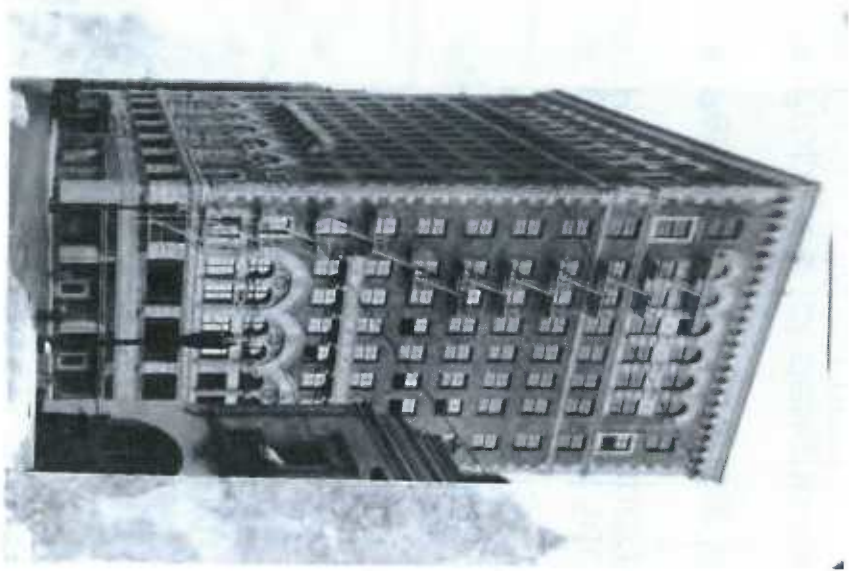


#4



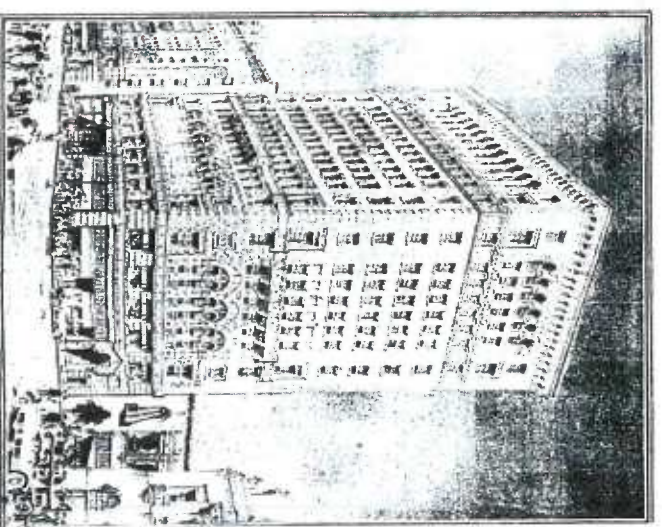
# Commercial Club Building Los Angeles, California

City of Los Angeles  
Planning and Land Use Management Committee Meeting  
Historic Cultural Monument Designation | September 9, 2014



# Overview

- Built in 1925-1926
- Renaissance Revival Commercial Building
  - 13-Stories w/steel lattice two-sided roof sign
- Master Architects Alexander Curtlett & Claude Beelman
  - Curtlett & Beelman, Inc. Job No. 2509
- Commercial Club of Southern California (1925-1932), Cabrillo Hotel, Case Hotel, and YWCA
- Period of Significance: 1925-1932
- Proposed for designation as a City of Los Angeles Historic Cultural Monument
  - Association with the socio-economic history of Los Angeles
  - Italian Renaissance Revival Commercial Architecture
  - Work of a Master



# Representative Views Exterior



# Character-Defining Features

- **Exterior**
  - Symmetrical tri-partite composition
  - Rusticated base
  - Belt coursing / cornices
  - Terra Cotta and Cast Stone Ornamentation
  - 1<sup>th</sup> Street iron marquis
  - Broadway Street arched entry with original doors, engaged columns, and ornamental plaster ceiling
  - Storefronts – original steel sash transoms in place
  - Windows – original wood and metal double-hung and casements at upper floors
  - Fire Escape – original at Broadway elevation
  - Blade Sign – dates to Case Hotel, but intact
  - 2 Painted Billboards – one dates to period, both historic-era

# Representative Views Interior



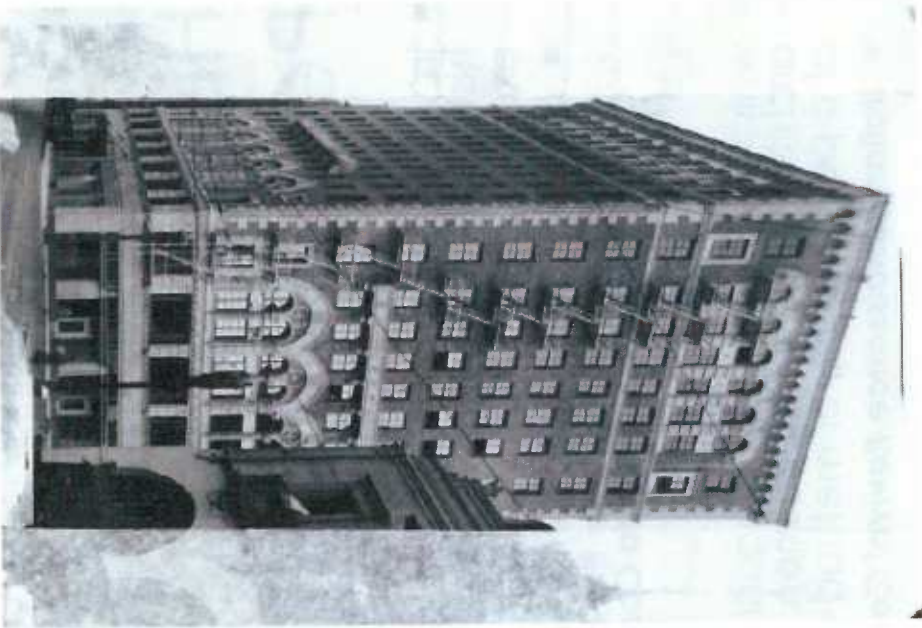
# Character-Defining Features

- **Interior**
  - Broadway lobby with original marble floors, vaulted ceilings, wood paneling, and checkroom vestibule
    - Original pilasters were removed
    - Reception room is a non-historic alteration
  - Marble staircase at 11<sup>th</sup> Street (covered by mechanical equipment)
  - Ornamental plaster at doorways & elevators
  - 3<sup>rd</sup> floor lounge with ceilings, pilasters, vault & windows
  - 4<sup>th</sup> floor dining room with piers, arched windows, and stenciled ceiling
  - 6<sup>th</sup> floor racquetball court (modified)
  - 7<sup>th</sup> floor swimming pool
  - 8<sup>th</sup>-13<sup>th</sup> floors hotel rooms

# Historic Context & Period of Significance

- in which the broad cultural, political, economic, or social history of the nation, state, or community is reflected or exemplified
  - ***broad socio-economic history of early twentieth century Los Angeles through its use as the headquarters of the Commercial Club of Southern California Commercial Club of Southern California (1925-1932)***
- which embody the distinguishing characteristics of an architectural-type specimen, inherently valuable for a study of a period, style, or method of construction
  - ***Italian Renaissance Revival Commercial Architecture (1925-1926)***
- which are a notable work of a master builder, designer, or architect whose individual genius influenced his or her age
  - ***Master Architects Curlett & Beelman, Inc. (1925-1926)***

# Commercial Club Building Then and Now





# Questions & Comments

- Wendy L. Tinsley Becker, RPH, AICP
- Principal | Urbana Preservation & Planning, LLC
- Consulting Principal | Historic Consultants, Inc.
- [wendy@urbanapreservation.com](mailto:wendy@urbanapreservation.com)

