

ELDORADO CO-TENANCY AGREEMENT

EXHIBIT 5 - SHEET 1 ELDORADO SYSTEM OWNERSHIP

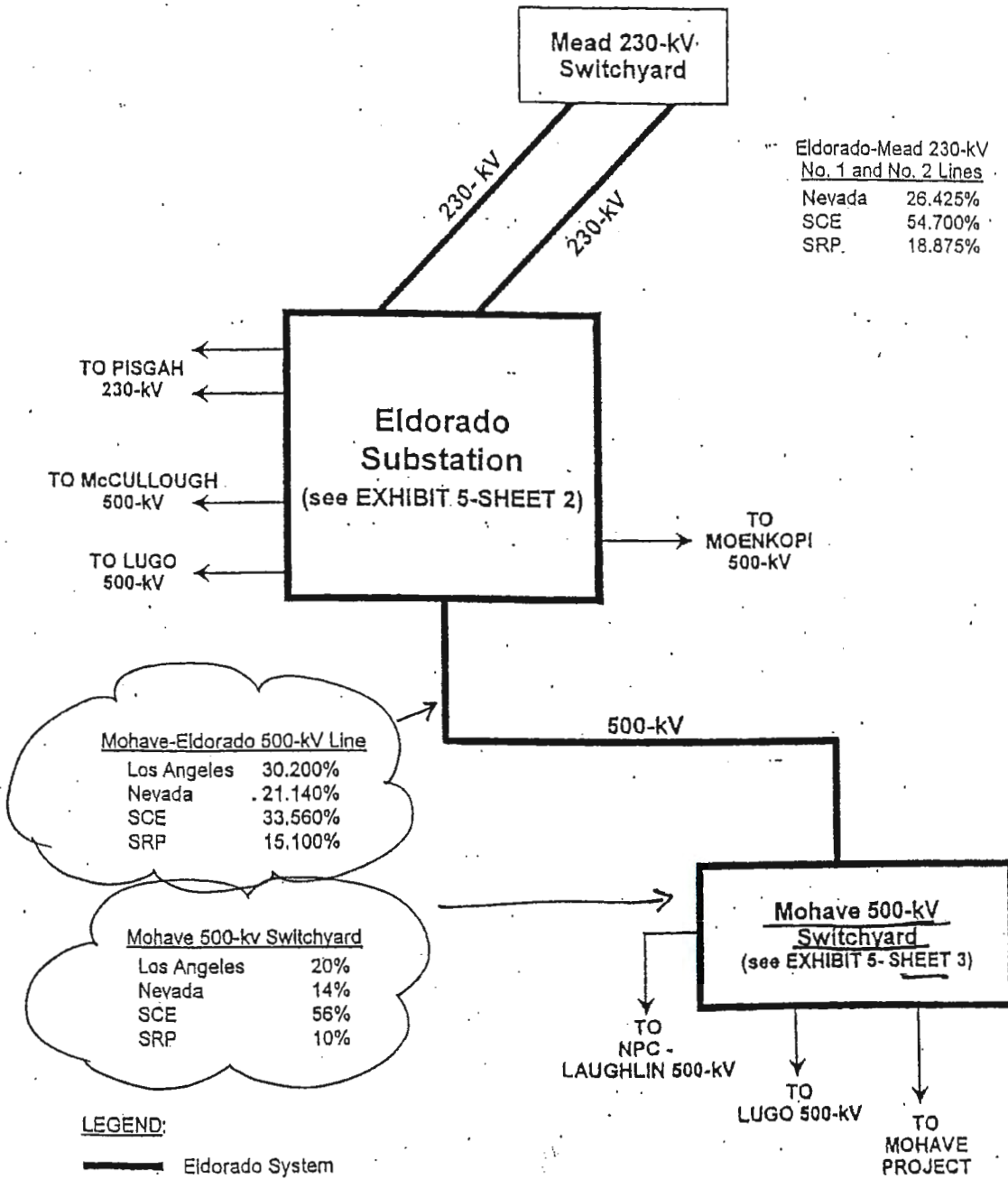
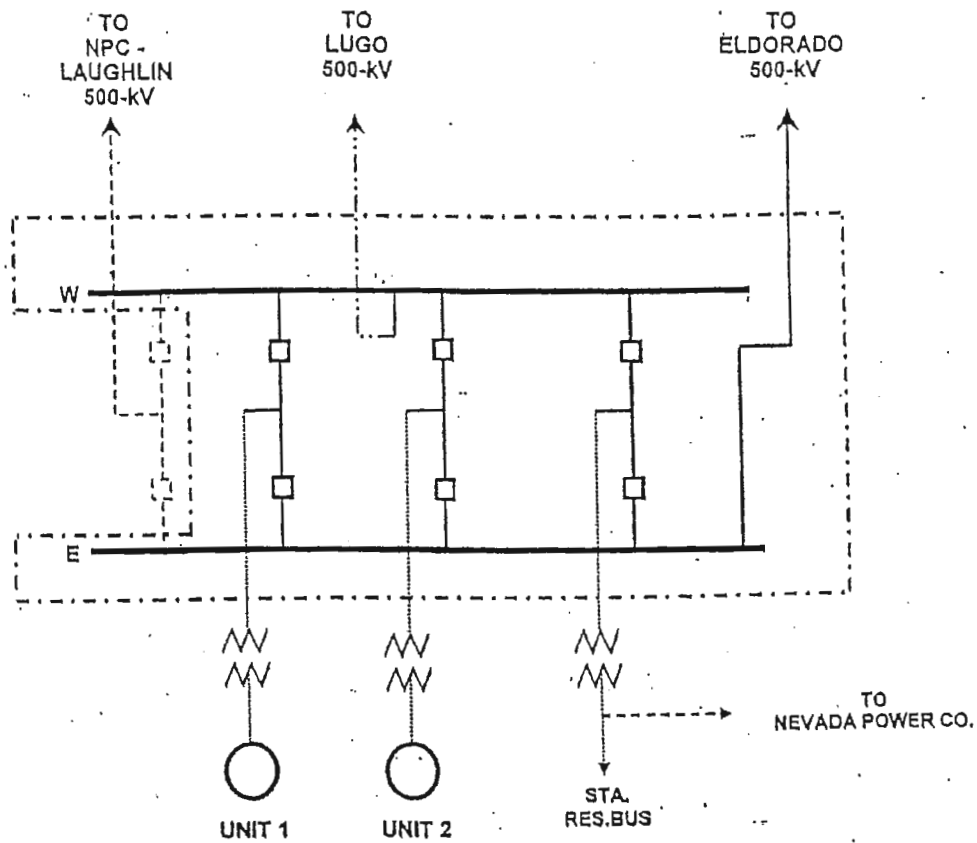


EXHIBIT 5 - SHEET 3
ELDORADO SYSTEM OWNERSHIP
MOHAVE SWITCHYARD



Mohave 500-kv Switchyard	
SCE	56%
LADWP	20%
NPC	14%
SRP	10%

LEGEND:
 ————— Eldorado System
 Mohave Project
 - - - - - Nevada Power
 - - - - - SCE

EIDORADO COTENANCY AGMT

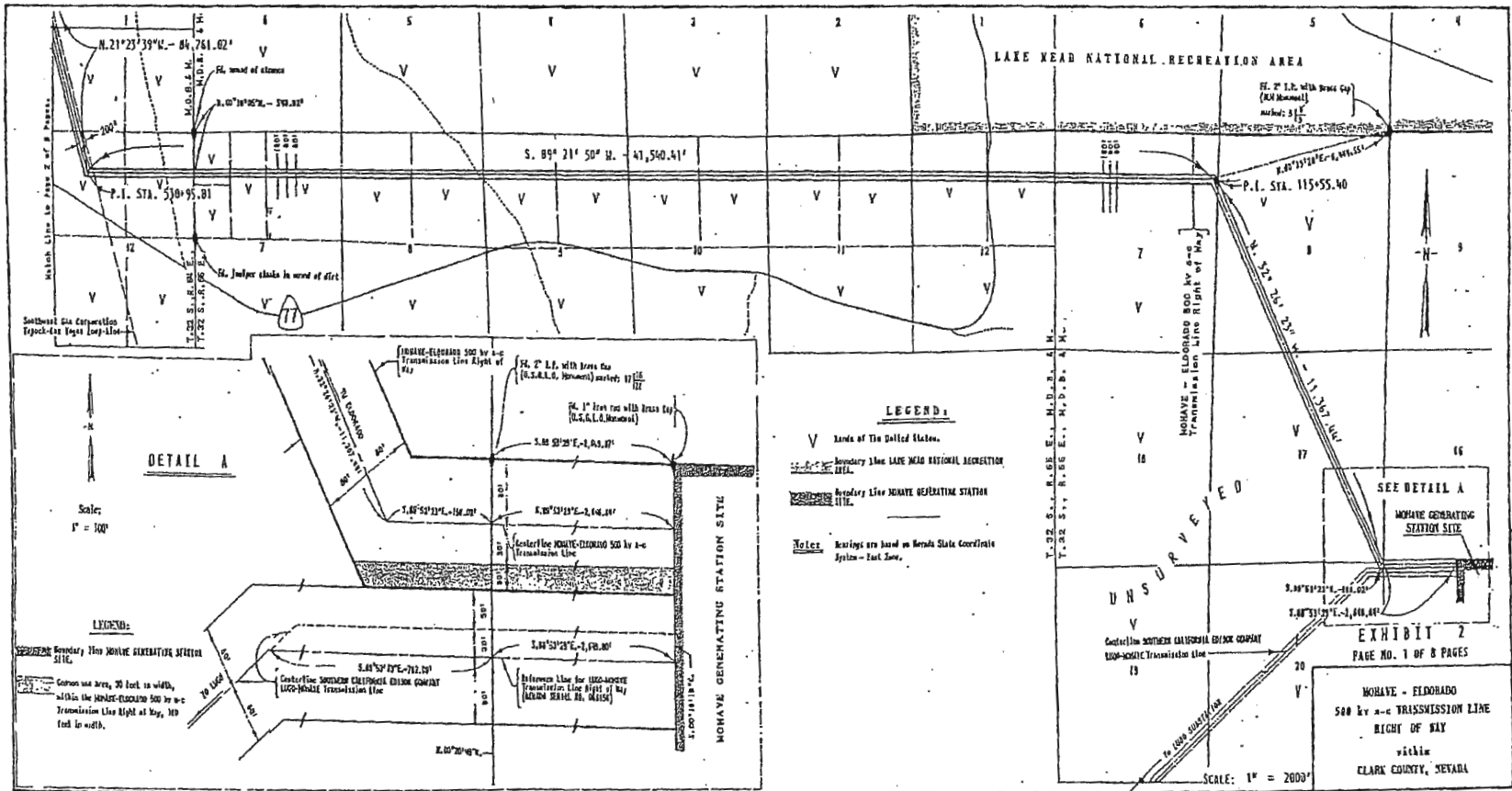
EXHIBIT 2.

MOHAVE-ELDORADO 500-KV AC TRANSMISSION

LINE RIGHT OF WAY

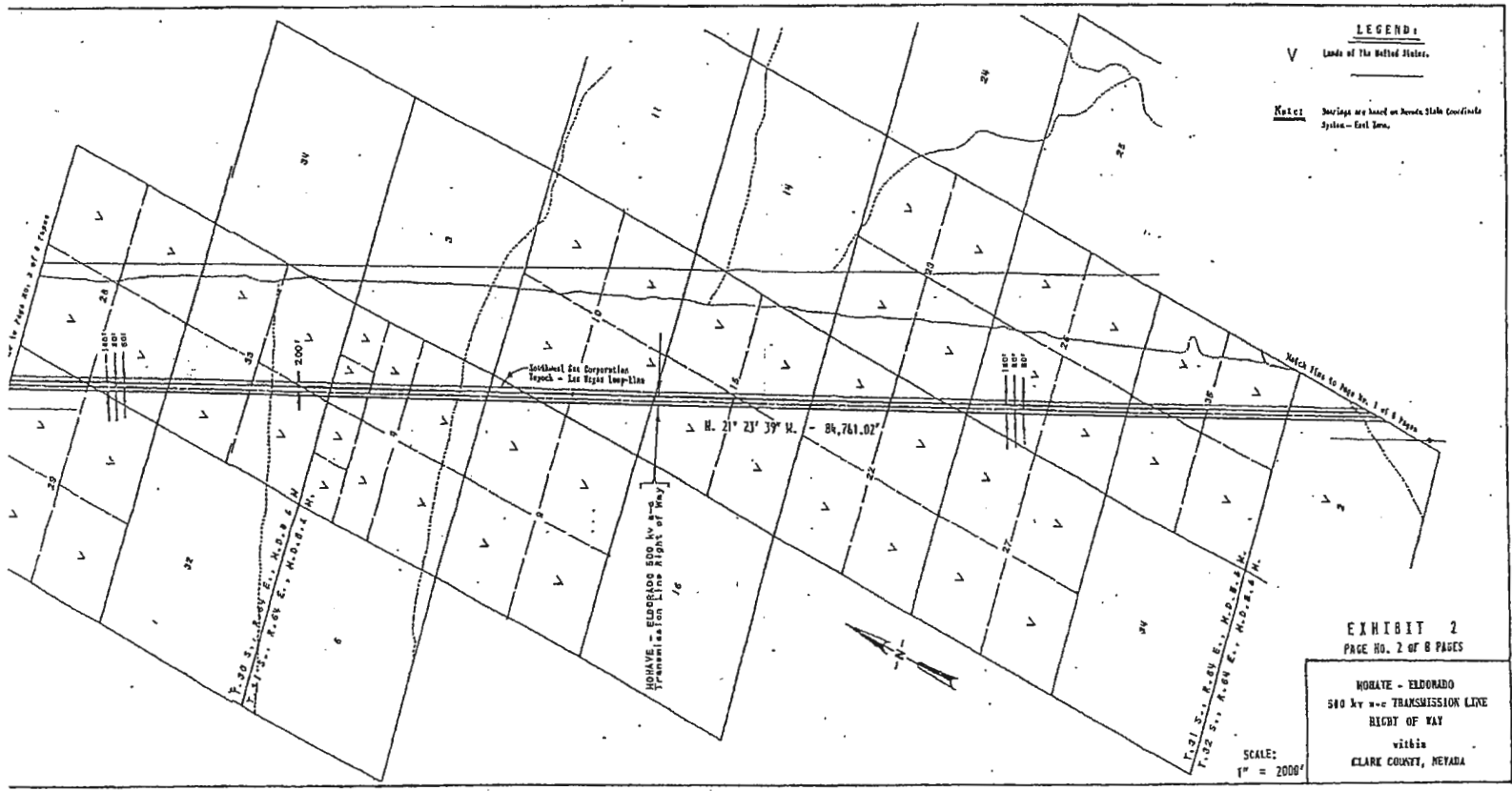
Issued by: James A. Cullier
Manager, FERC Rates & Regulation
Issued on: June 19, 2001

Effective: August 18, 2001



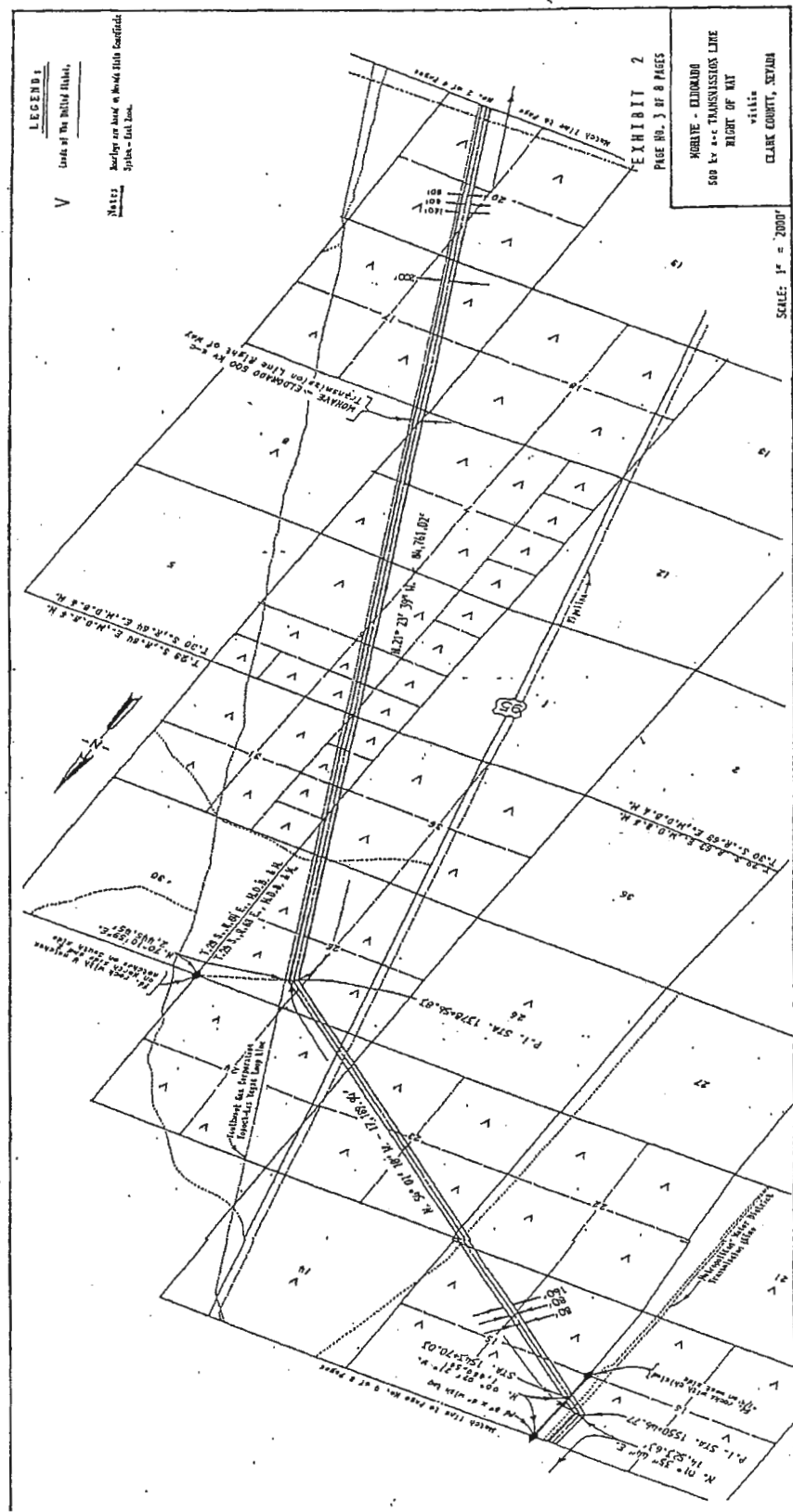
Issued by: James A. Coiffier
 Manager, FERC Rates & Regulation
 Issued on: June 19, 2001

Effective: August 18, 2001



Southern California Edison Company
 Joint Schedule FERC No. 424

Original Sheet No. 65W



LEGEND:
 V Easement of the Utility District.

Notes:
 Markings are based on Nevada State Coordinates.
 Spikes - Dat Lines.

EXHIBIT 2
 PAGE NO. 3 OF 8 PAGES

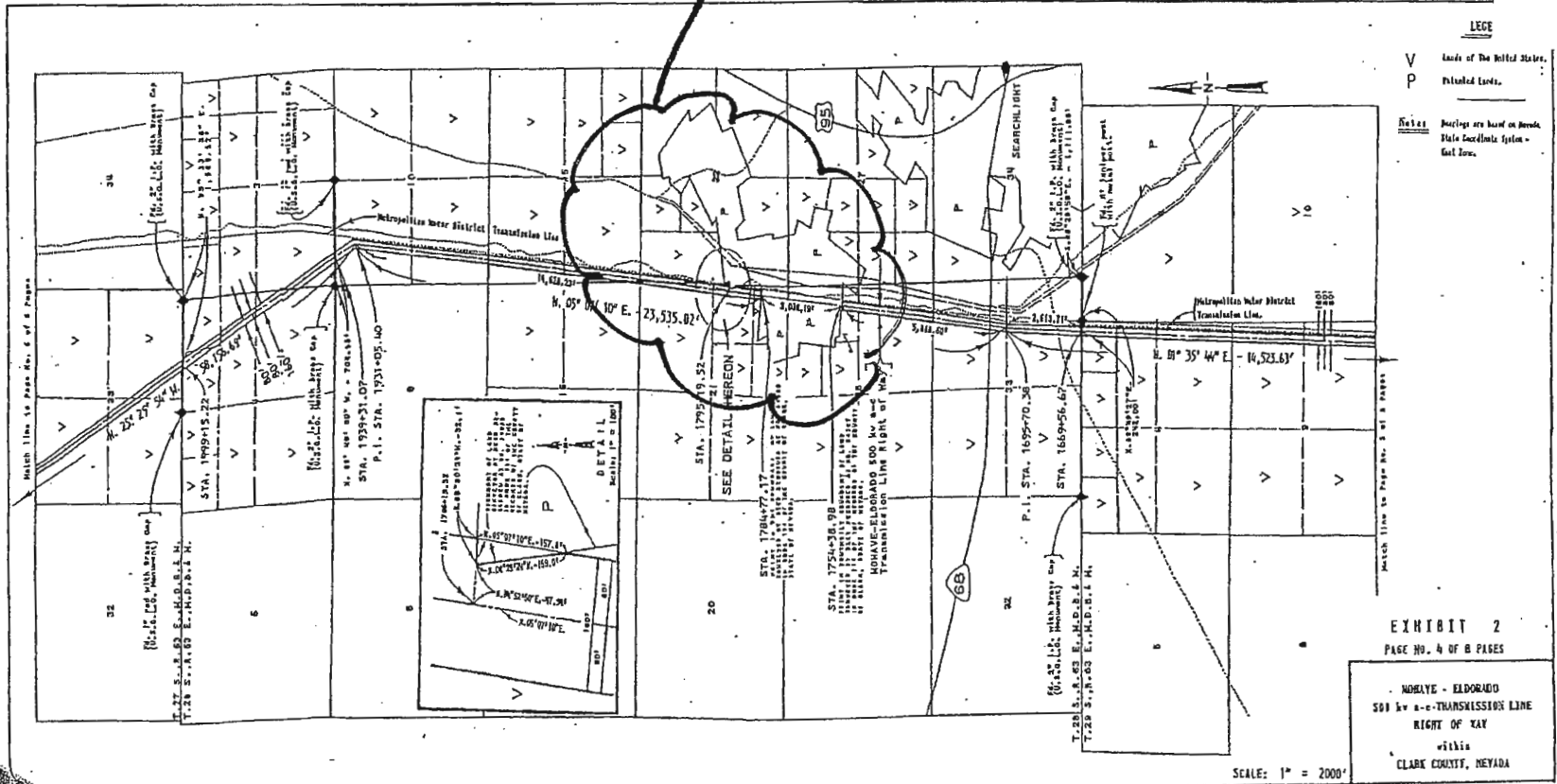
**MOHATE - ELONADO
 500 KV AC TRANSMISSION LINE
 RIGHT OF WAY**
 within
 CLARK COUNTY, NEVADA

SCALE: 1" = 2000'

Issued by: James A. Cullifer
 Engineer, FERC Permit & Regulation
 Issued on: June 19, 2001

Effective: August 18, 2001

SEE "P"
DESIGNATION

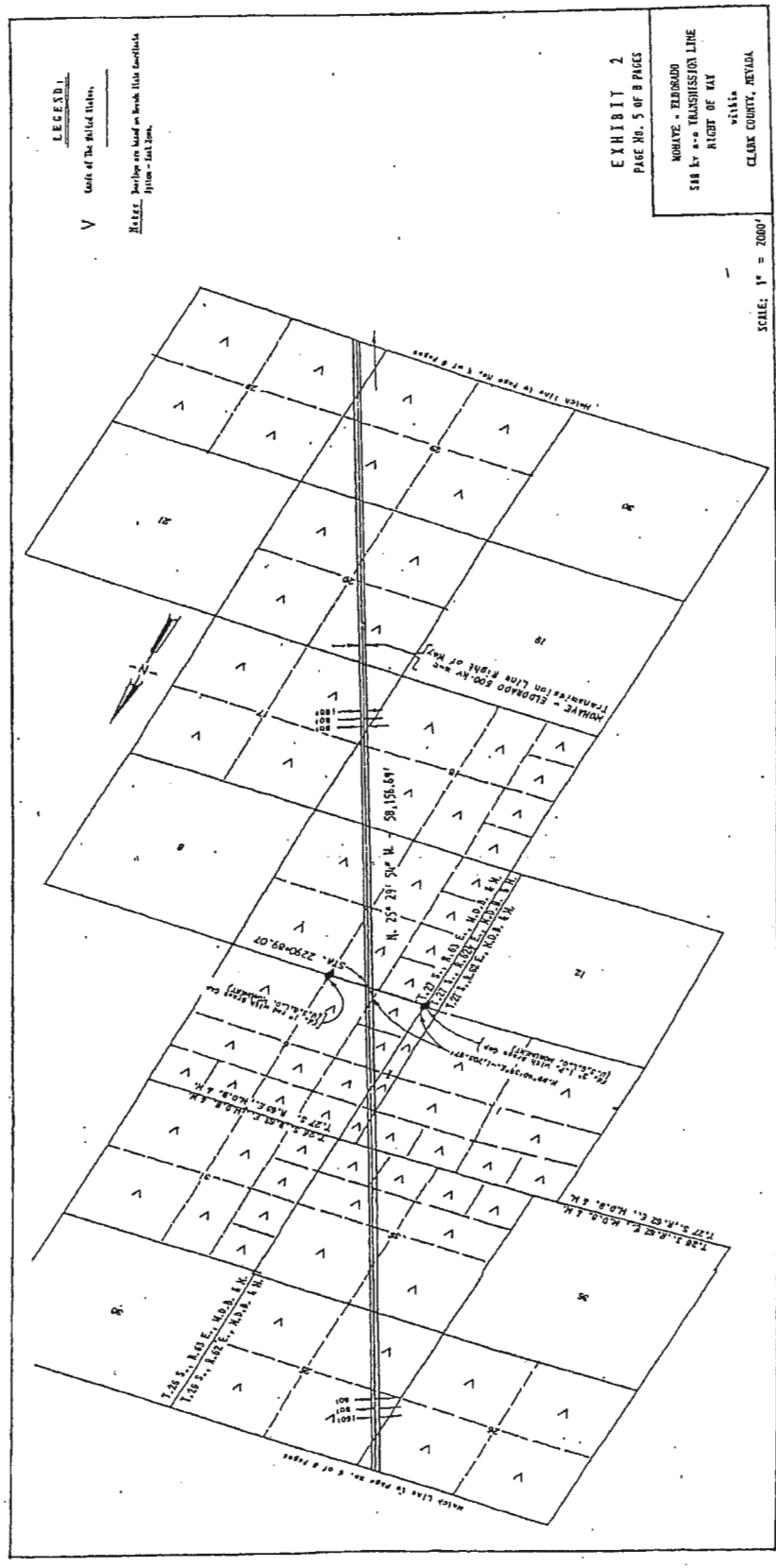


Issued by: James A. Cuillier
Manager, FERC Rates & Regulation
Issued on: June 19, 2001

Effective: August 18, 2001

Southern California Edison Company
Rate Schedule FENC No. 424

Original Sheet No. 65Y



LEGEND
V Cont. of the Billed Station

Notes: Symbols are used as shown in the schedule
Station - 1000 ft.

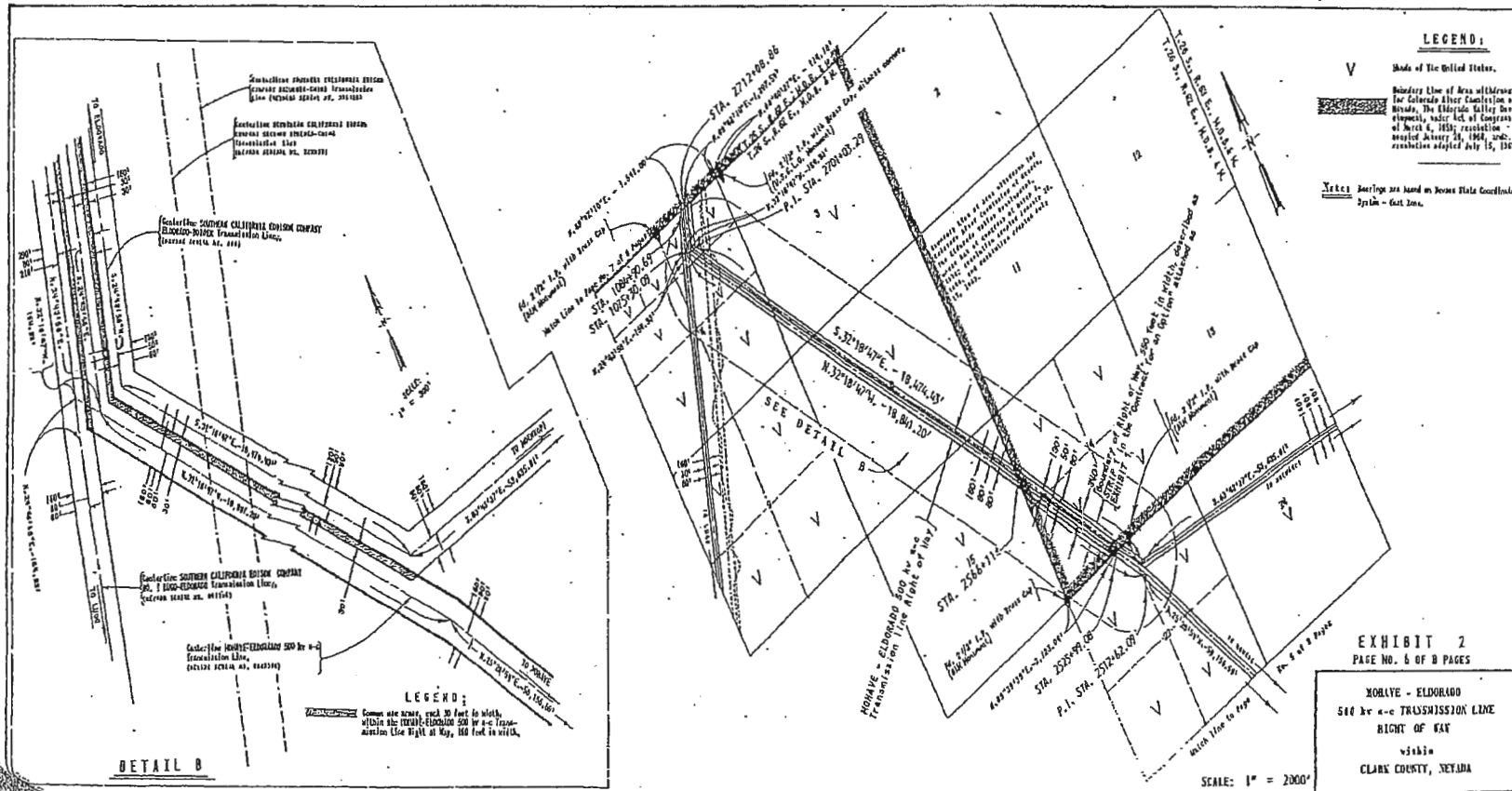
EXHIBIT 2
PAGE NO. 5 OF 8 PAGES

NONVAYE - ELBORADO
500 KV TRANSMISSION LINE
RIGHT OF WAY
within
CLARK COUNTY, NEVADA

SCALE: 1" = 2000'

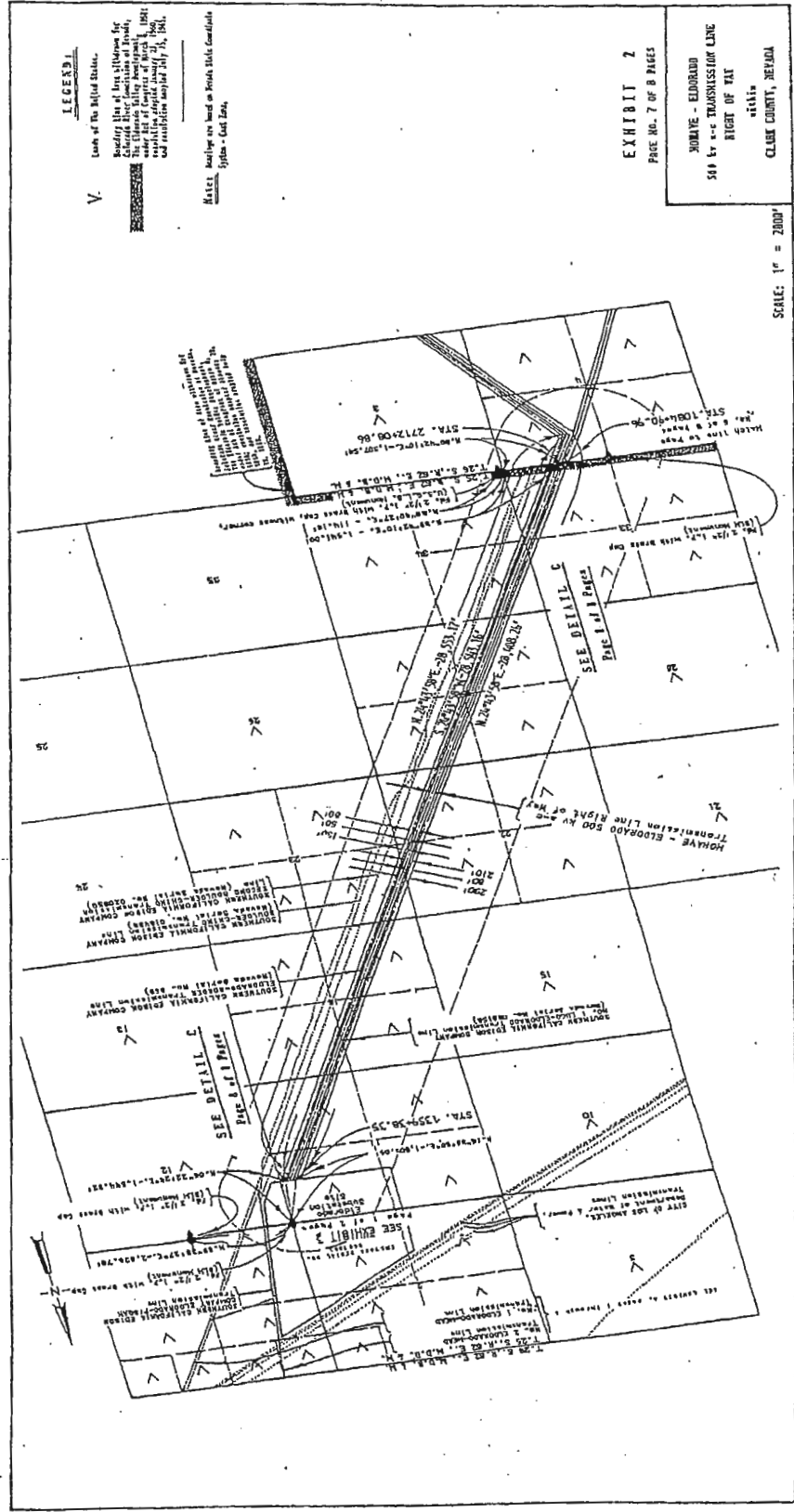
Issued by: James A. Caillier
Manager, FENC Rates & Regulation
Issued on: June 15, 2001

Effective: August 18, 2001



Issued by: James A. Cuillier
 Manager, FERC Rates & Regulation
 Issued on: June 19, 2001

Effective: August 18, 2001



LEGEND
 Lines of No. 10 High Voltage Transmission Lines
 Boundary Lines of Area Withdrawn for Electric Line Construction of Federal, State or Local Government, or the National Electric Safety Council, or any political subdivision thereof, or any other authority having jurisdiction over public utilities.
 Areas not to be used for electric line construction.

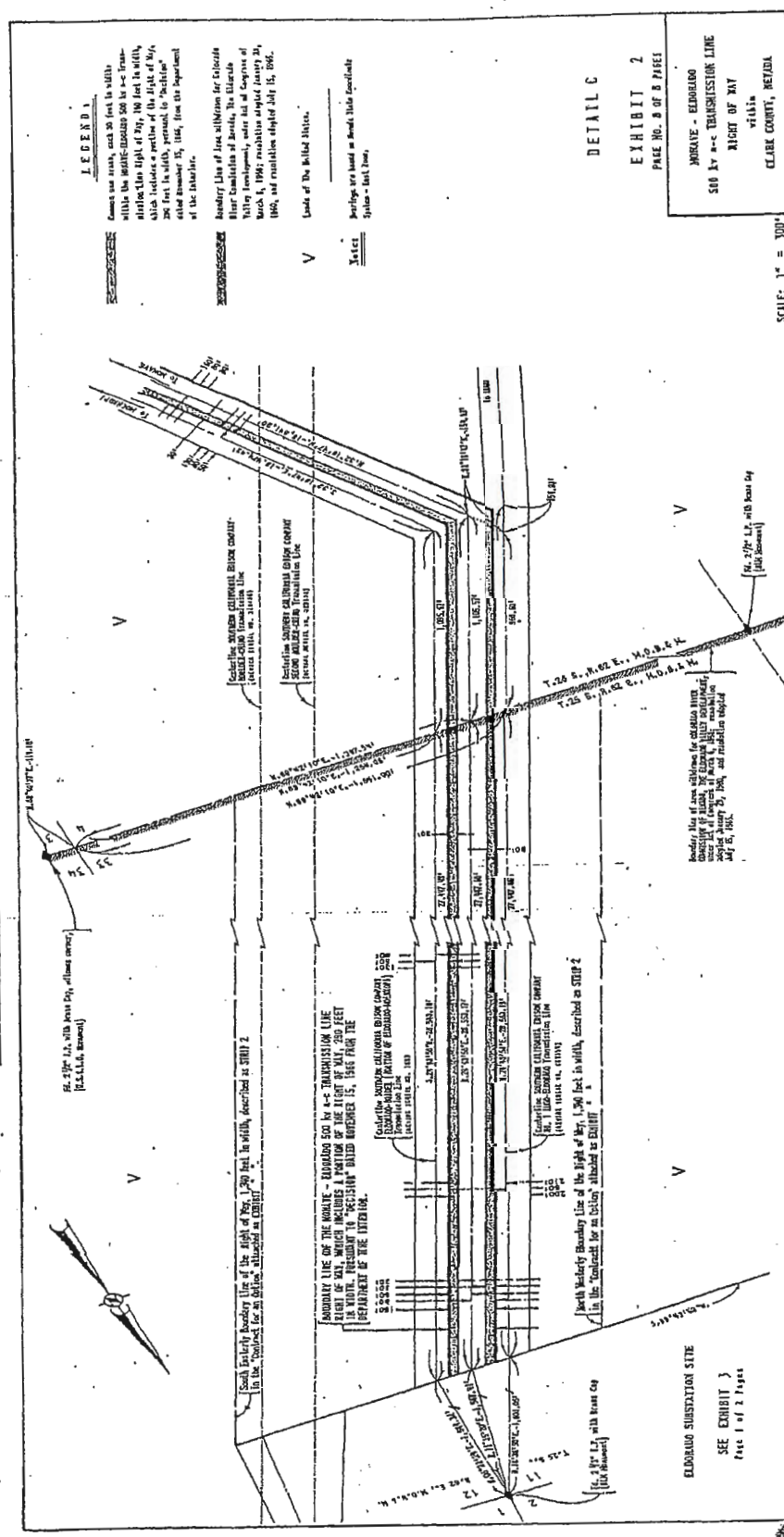
Notes
 1. Stationing on this map is based on State Plane, North American Datum 1983, Zone 10 North.
 2. Stationing on this map is based on State Plane, North American Datum 1983, Zone 10 North.
 3. Stationing on this map is based on State Plane, North American Datum 1983, Zone 10 North.

EXHIBIT 2
 PAGE NO. 7 OF 8 PAGES
 HONAYE - EL DORADO TRANSMISSION LINE
 RIGHT OF WAY
 within
 CLARK COUNTY, NEVADA

SCALE: 1" = 2000'

Issued by James A. Culler
 Manager, FERC Rates & Regulation
 Issued on: June 15, 2001

Effective: August 18, 2001



LEGEND

Center line with each 25 feet in width with the 500-foot easement 500 feet in width within the right of way, 100 feet in width which includes a portion of the right of way, 250 feet in width, pursuant to "Precision" dated November 15, 1965, from the Department of the Interior.

Boundary Line of line with easement for electric lines transmission of power, the interests of which development, under the act of January 21, March 4, 1907, and the act of January 21, 1908, and the resolution adopted July 15, 1906.

Line of the 10-foot utility.

Surveys are based on *North* True Meridian System - *San Francisco*.

DETAILS

EXHIBIT 2
PAGE NO. 8 OF 8 PAGES

APPROVE - EDDOROUGH
500 kv 4-4 TRANSMISSION LINE
RIGHT OF WAY
with
CLARK COUNTY, NEVADA

SCALE: 1" = 300'

64.57° 14' 12" with bear by, (line shown) (See Exhibit 3)

Each End of Boundary Line of the Right of Way, 1,250 feet in width, described as EXHIBIT 2 in the "Contract for an Electric" attached as EXHIBIT 1.

BOUNDARY LINE OF THE WORKS - EDDOROUGH 500 kv 4-4 TRANSMISSION LINE RIGHT OF WAY, WHICH INCLUDES A PORTION OF THE RIGHT OF WAY, 250 FEET IN WIDTH, PRESIDENT IN "PRECISION" BOUND BORDERS 15, 1965 FOR THE DEPARTMENT OF WIRE TENSION.

Right of way easement 500 feet in width from the line (shown must be shown) (shown must be shown)

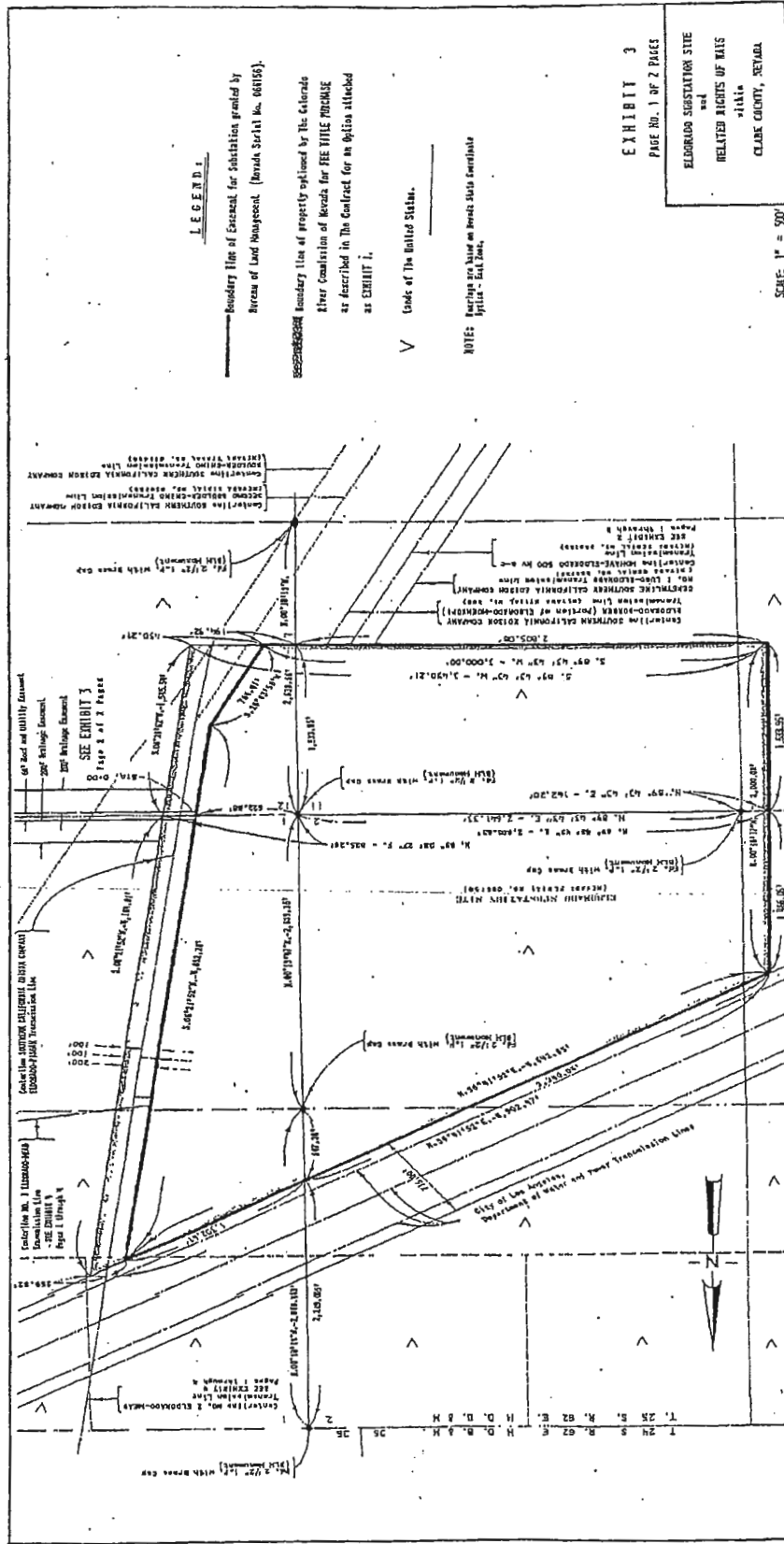
Center line of the 1,250-foot in width, described as EXHIBIT 2 in the "Contract for an Electric" attached as EXHIBIT 1.

Boundary line of line with easement for electric lines transmission of power, the interests of which development, under the act of January 21, March 4, 1907, and the act of January 21, 1908, and the resolution adopted July 15, 1906.

SEE EXHIBIT 3
Page 1 of 2 Pages

Issued by: James A. Cullifer
Manager, FERC Rates & Regulation
Issued on: June 15, 2001

Effective: August 18, 2001



LEGEND

Boundary line of easement for habitation granted by Bureau of Land Management (Bureau Serial No. 061595).

Boundary line of property acquired by the Colorado River Commission of Nevada for FEE TITLE PURCHASE as described in the Contract for an Option attached as EXHIBIT I.

↳ Lines of the United States.

NOTE: Bearings are based on Nevada State Coordinate System - Salt Lake.

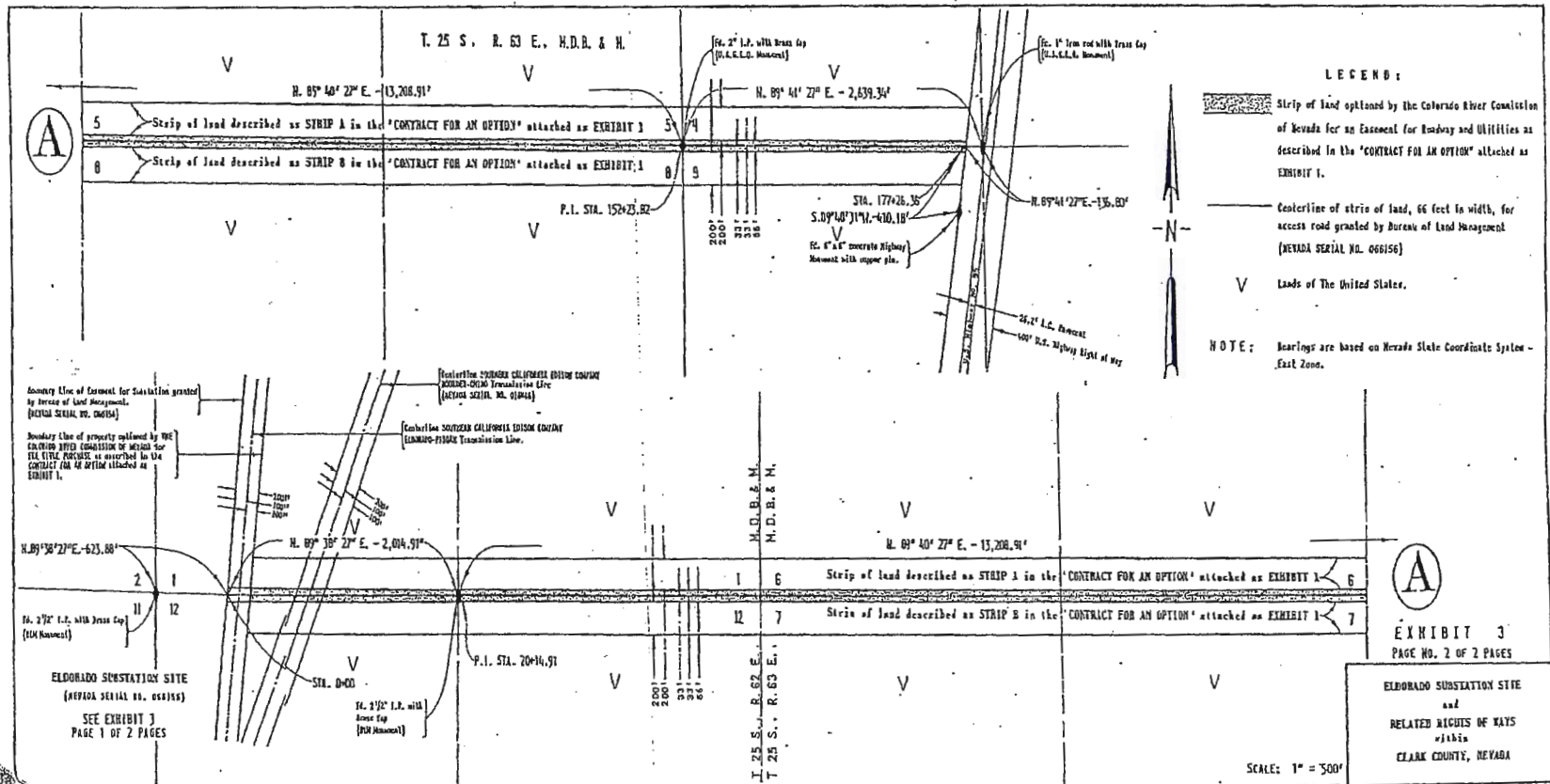
EXHIBIT 3
PAGE NO. 1 OF 2 PAGES

ELDORADO SUBSTATION SITE
and
RELATED RIGHTS OF WAIS
situated
CLARK COUNTY, NEVADA

SCALE: 1" = 500'

Issued by: James A. Cullifer
Manager, FERC Rates & Regulation
Issued on: June 19, 2001

Effective: August 18, 2001



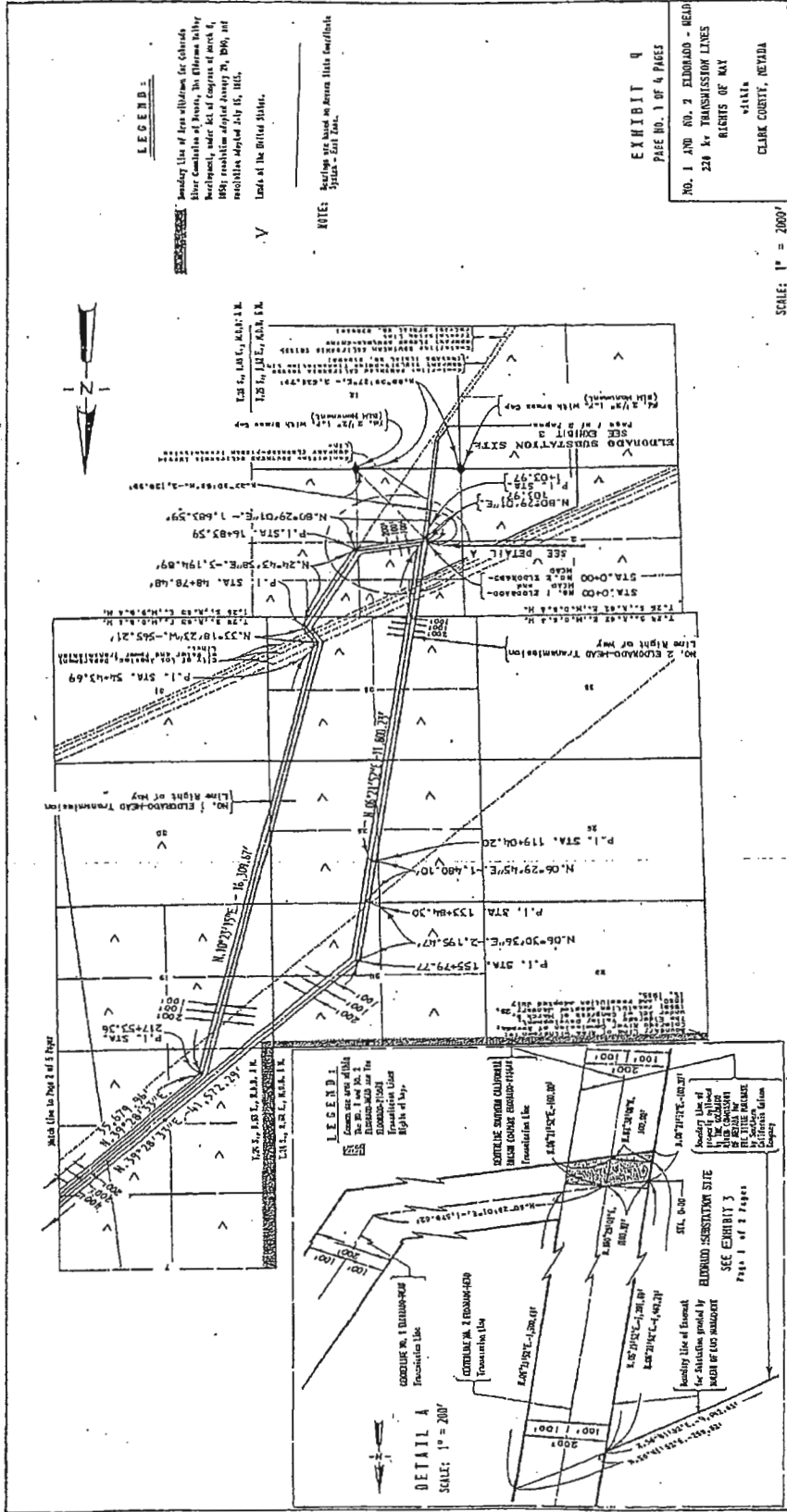
LEGEND:

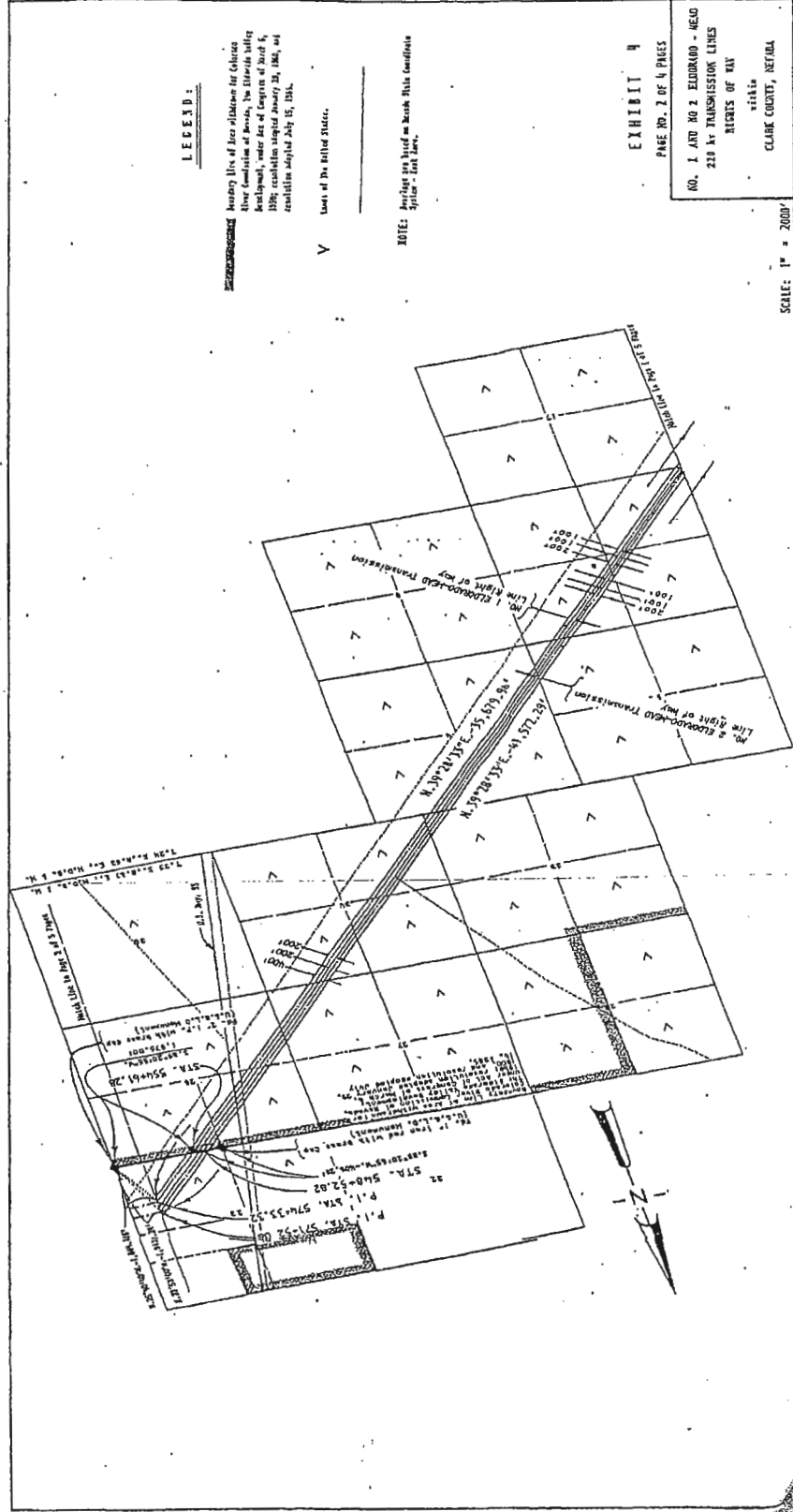
- Strip of land optioned by the Colorado River Commission of Nevada for an Easement for Embankment and Utilities as described in the 'CONTRACT FOR AN OPTION' attached as EXHIBIT 1.
- Centerline of strip of land, 66 feet in width, for access road granted by Bureau of Land Management (NEVADA SERIAL NO. 066156)
- Loads of The United States.

NOTE: Bearings are based on Nevada State Coordinate System - East Zone.

Issued by: James A. Cuillier
Manager, FERC Rates & Regulation
Issued on: June 19, 2001

Effective: August 18, 2001





LEGEND:

Heavy line of line station for clearance
Other (medium) lines, the line with utility
development, under line of utility
1989; construction project shown on 1984, 1987, 1988
revisions adopted July 15, 1989.

V Lines of the United States.

NOTE: Average sea level as shown State conditions
Spring - San Jose.

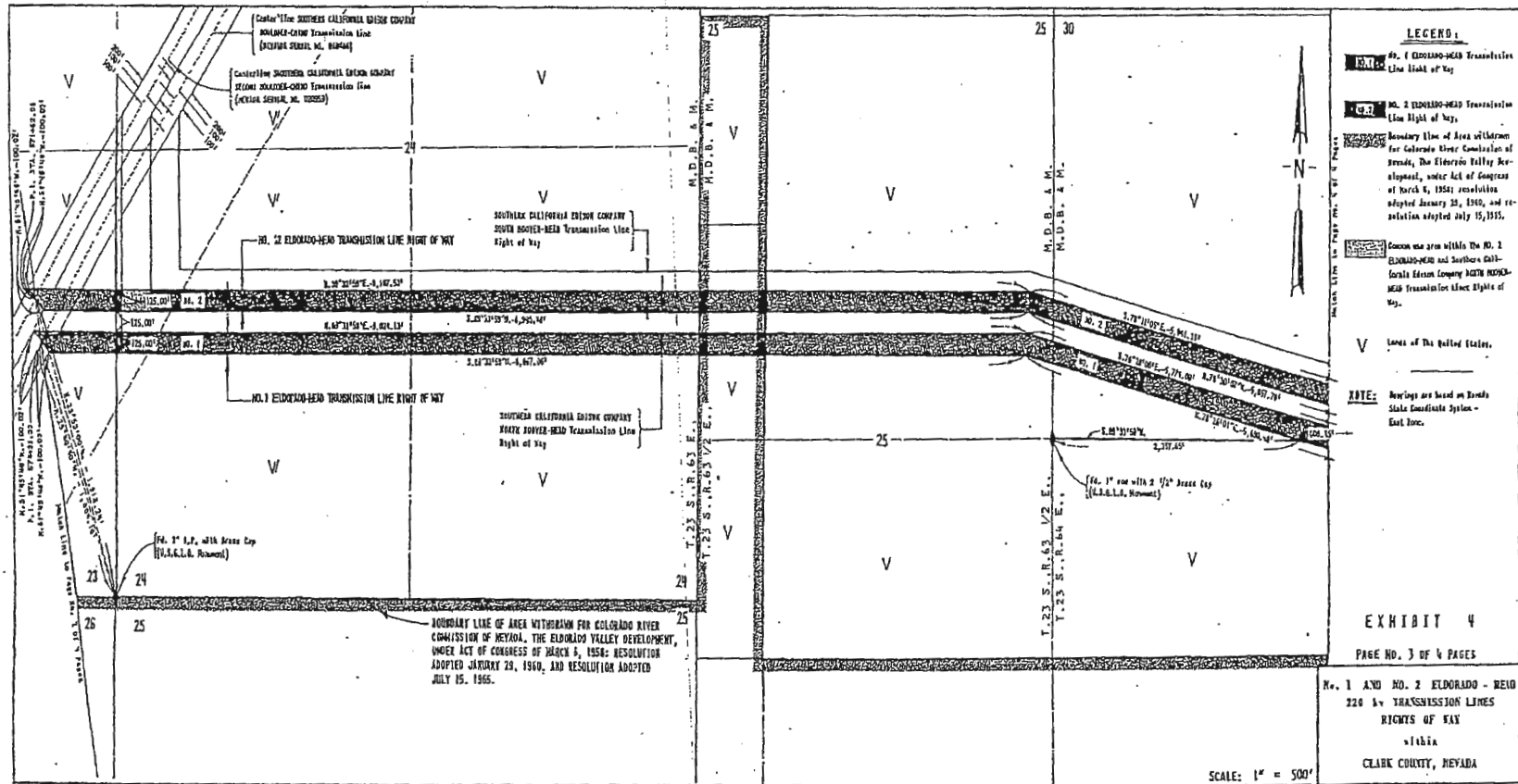
EXHIBIT 4
PAGE NO. 2 OF 4 PAGES

NO. 1 AND NO. 2 ELBORADO - HELD
BY TRANSMISSION LINES
RECORDS OF THE
STATE
CLARE COUNTY, NEVADA

SCALE: 1" = 200'

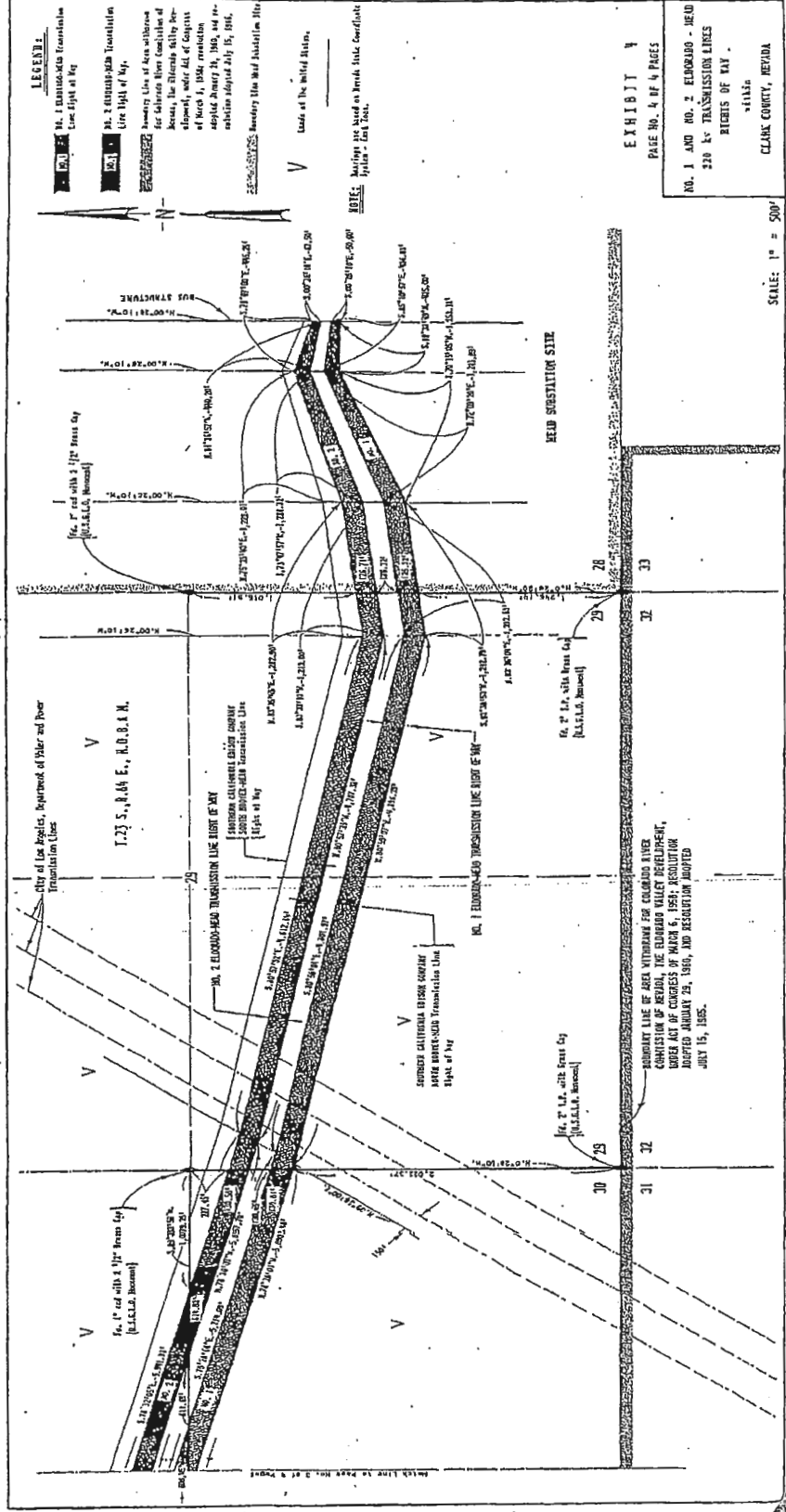
Issued by: James A. Cullifer
Manager, FERC Case & Regulation
Issued on: June 19, 2001

Effective: August 18, 2001



Issued by: James A. Cullifer
Manager, FERC Rates & Regulation
Issued on: June 19, 2001

Effective: August 18, 2001



Issued by: James A. Cullier
 Manager, FERC Rates & Regulation
 Issued on: June 19, 2001

Effective: August 18, 2001