

Project Space

Temporary Exhibitions

Historical Exhibition

Mezzanine

Lobby

Lower Lobby

300-seat

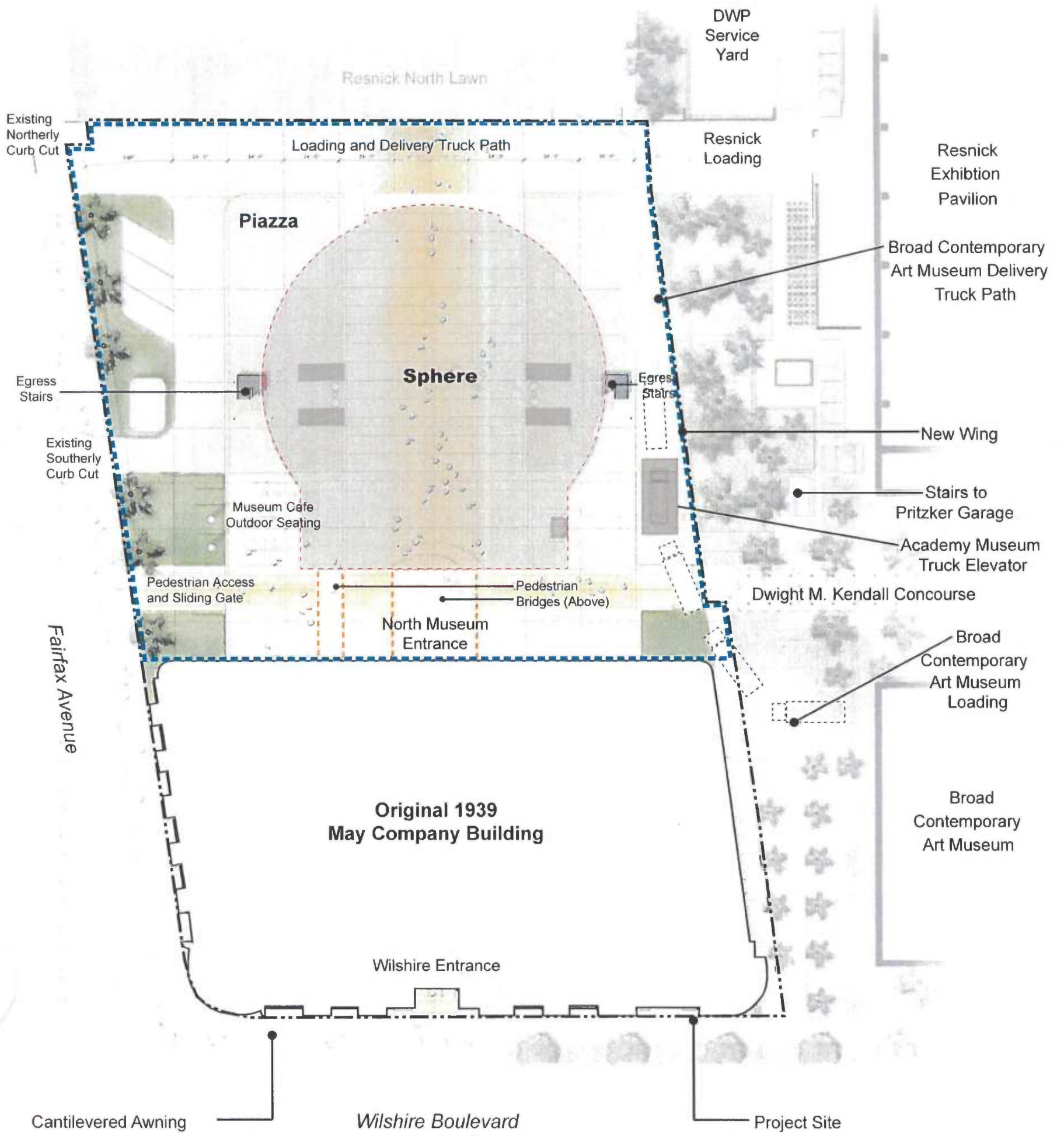
Theater



ACADEMY MUSEUM OF MOTION PICTURES

ACADEMY MUSEUM OF M.

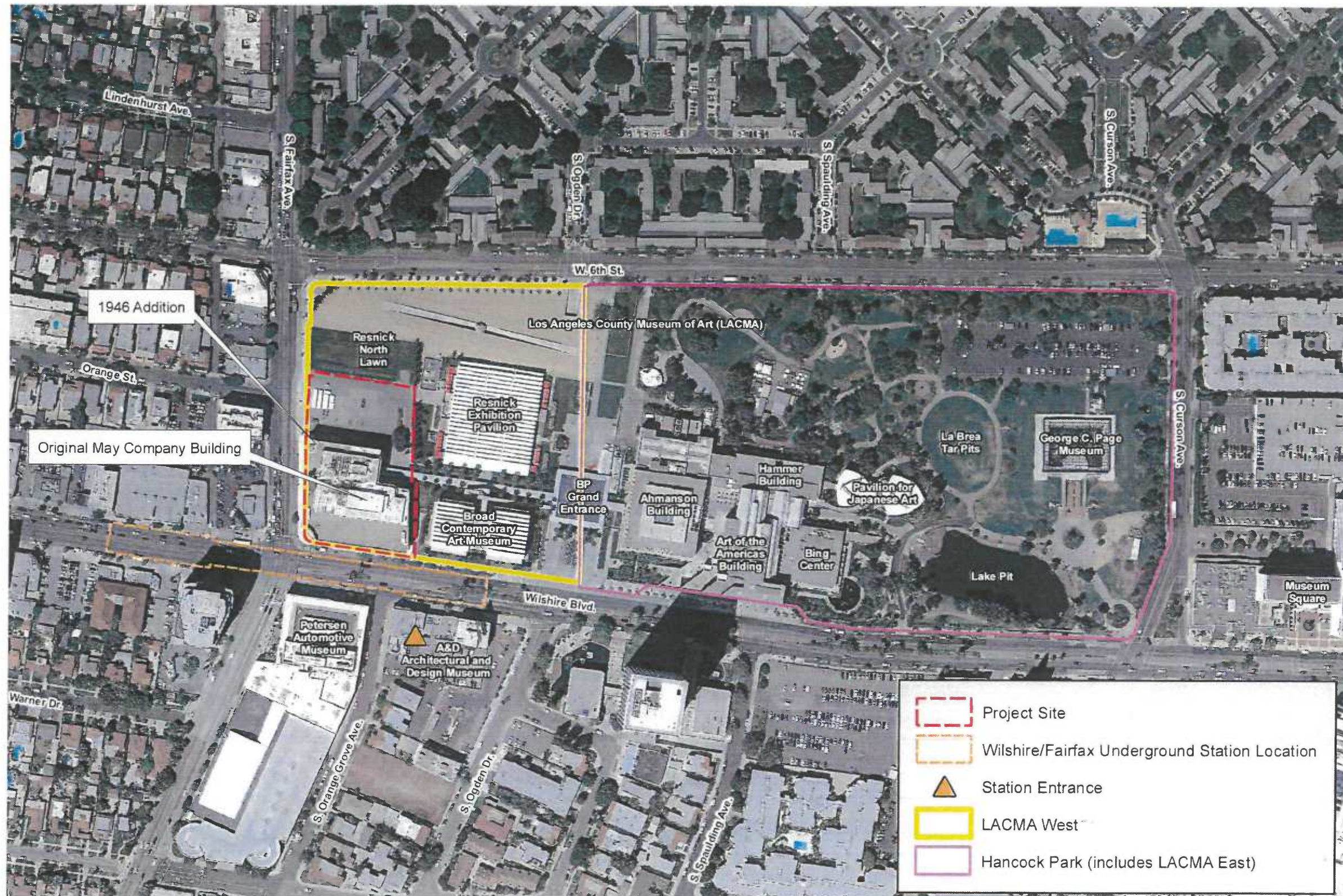
ACADEMY AWARDS



Proposed Site Plan

Academy Museum of Motion Pictures Project
 Source: Renzo Piano Building Workshop and Studio Pali Fekete Architects, 2014.

FIGURE
2-3



Aerial Photograph of Project Site and Vicinity

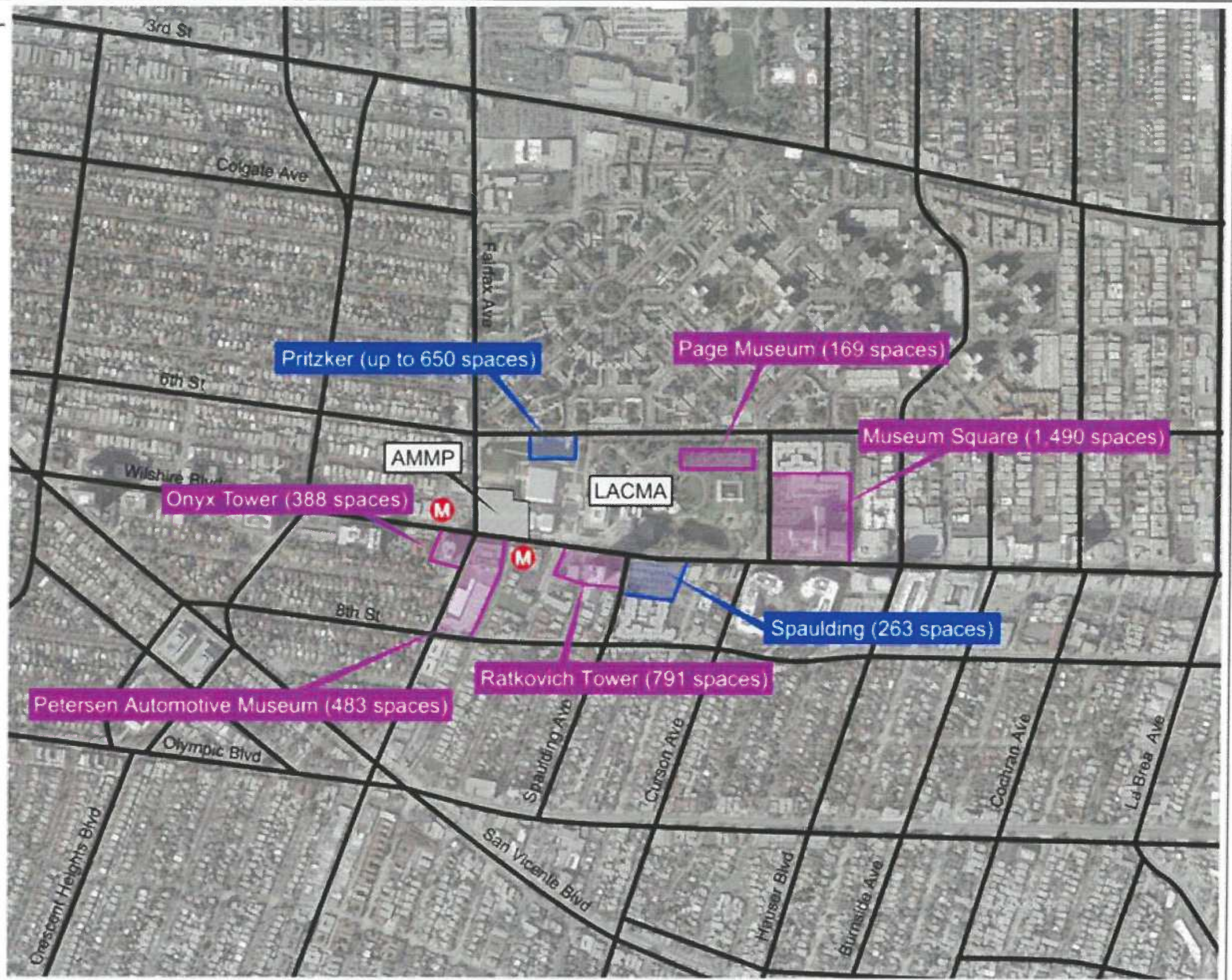
FIGURE

2-2

Academy Museum of Motion Pictures Project
 Source: Google (Aerial), 2013; PCR Services Corporation, 2014.

LEGEND

- Project Site
- Metro Purple Line Portal
- Existing LACMA Parking
- Potential Off-campus Parking Lots



Pritzker (up to 650 spaces)

Page Museum (169 spaces)

Museum Square (1,490 spaces)

Onyx Tower (388 spaces)

LACMA

AMMP

Spaulding (263 spaces)

Ratkovich Tower (791 spaces)

Petersen Automotive Museum (483 spaces)



Not to Scale

Removal of 1946 Addition



Existing Building



Original Building



Proposed Project