

CITY OF LOS ANGELES  
INTER-DEPARTMENTAL CORRESPONDENCE

**DATE:** June 29, 2018

**TO:** The Honorable City Council

**FROM:** Enrique C. Zaldivar, General Manager and Director  
LA Sanitation



**SUBJECT: CF NO. 15-1138-S27: RECREATIONAL VEHICLE WASTE PUMPING**

This report is in response to City Council Motion 15-1138-S27 (Blumenfield, Englander, Harris-Dawson) instructing LA Sanitation (LASAN) to report on:

1. Contracting with a company to provide recreational vehicle waste pumping for Recreational Vehicle's (RV) on the wait list for towing and individuals living in RVs who are enrolled in services for housing placement.
2. Partnering with private and City RV disposal stations to provide vouchers as a supplemental service for individuals living in RVs who are enrolled in services for housing placement.

**Item No. 1: Contracting with a company to provide recreational vehicle waste pumping for RV's in located on the streets.**

LASAN has determined that it is not recommended to contract with a contractor(s) to provide recreational vehicle waste pumping for RV's located on the street, because there are several logistical and servicing issues for performing these types of services by a private contractor on the public right-of-way. These include:

1. There are several traffic safety and lane closure concerns with waste tank connections located on the driver-side rear of RVs (industry standard).
2. There are concerns with sewage spills resulting from human or mechanical error and/or malfunction of equipment from pumping services on RVs located on City streets.
3. There are concerns with damages arising from performing pumping services to a privately-owned RV located on a City street. This will make the City liable.
4. Poor operational conditions of a privately-owned RV's (i.e., the waste tank connection) may not allow servicing by a private contractor.
5. LAMC 85.01 limits repairs of vehicles on streets to emergency repairs only.

**Item No. 2: Partnering with private and City RV disposal stations to provide vouchers as a supplemental service.**

**A. Private RV Disposal Stations**

LASAN has identified four private RV disposal stations in the San Fernando Valley as summarized below and shown in Figure 1.

1. **Shell Station**  
Address: 23502 N. Newhall Avenue, Newhall, CA 91321  
Cost: \$18.00 cash  
Hours: 24 hours/day
  
2. **King Kong RV**  
Address: 8924 Lankershim Boulevard, Sun Valley, CA 91352  
Cost: \$25.00 cash  
Hours: Monday – Friday from 7 a.m. to 3 p.m.
  
3. **Benchmark RV**  
Address: 11660 Tuxford Street, Sun Valley, CA 91352  
Cost: \$25.00 cash  
Hours: Monday – Friday from 8 a.m. to 5 p.m.
  
4. **Malibu State Park**  
Address: 1925 Las Virgenes Road, Calabasas, CA 91302  
Cost: \$12.00 cash  
Hours: Monday – Friday from 8 a.m. to 5 p.m.

It is feasible for the City upon authority by the Mayor and City Council and the allocation of necessary funds to contract with one or more of the private disposal stations to accept a City issued voucher. Assuming 20 RVs per week, the estimated cost of the voucher program is \$26,000 per year, which would be provided by the General Fund. LASAN’s Sewer Construction and Maintenance Fund can only be used to provide service to those customers connected to a sewer and paying a Sewer Service Charge.

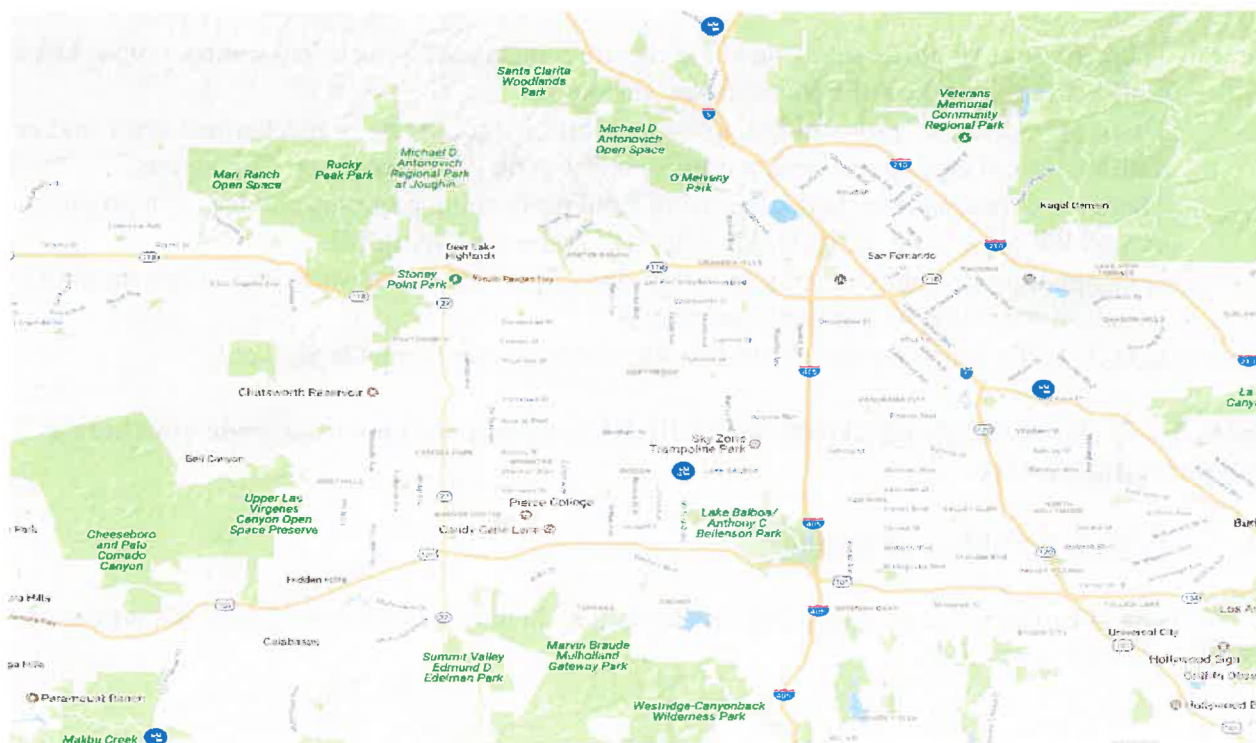


Figure 1: Private RV disposal stations in San Fernando Valley (blue circles).



**B. City RV Disposal Stations**

LASAN is currently assessing and surveying two potential locations for City RV disposal stations in the San Fernando Valley:

1. The Wastewater Collection Division (WCSD) Yard located at 18560 Oxnard Street, Tarzana, CA 91335 (Figure 2).
2. The Solids North-Central Division Yard located at 452 N. San Fernando Road, Los Angeles, CA 90031 (Figure 3).

LASAN can utilize these yards, when feasible and accessible, as City RV disposal stations. This will require sanitary sewer modifications and staffing. The City RV disposal facilities proposed for these two locations will be constructed similar to those currently located at the Hyperion Water Reclamation Plant and the Gaffey Yard. The initial set-up requirements for the two proposed locations are:

1. Accessible sewer pipes for sewage disposal and a potable water source for wash down and cleaning of the disposal station.
2. Sufficient space for traffic flow of RVs through the facility's grounds.
3. Placement of visible signage directing RV drivers to the disposal facility.
4. Security/staff to monitor RVs ingress and egress out of the location. LASAN recommends employing a Maintenance Laborer (Attachment 1).

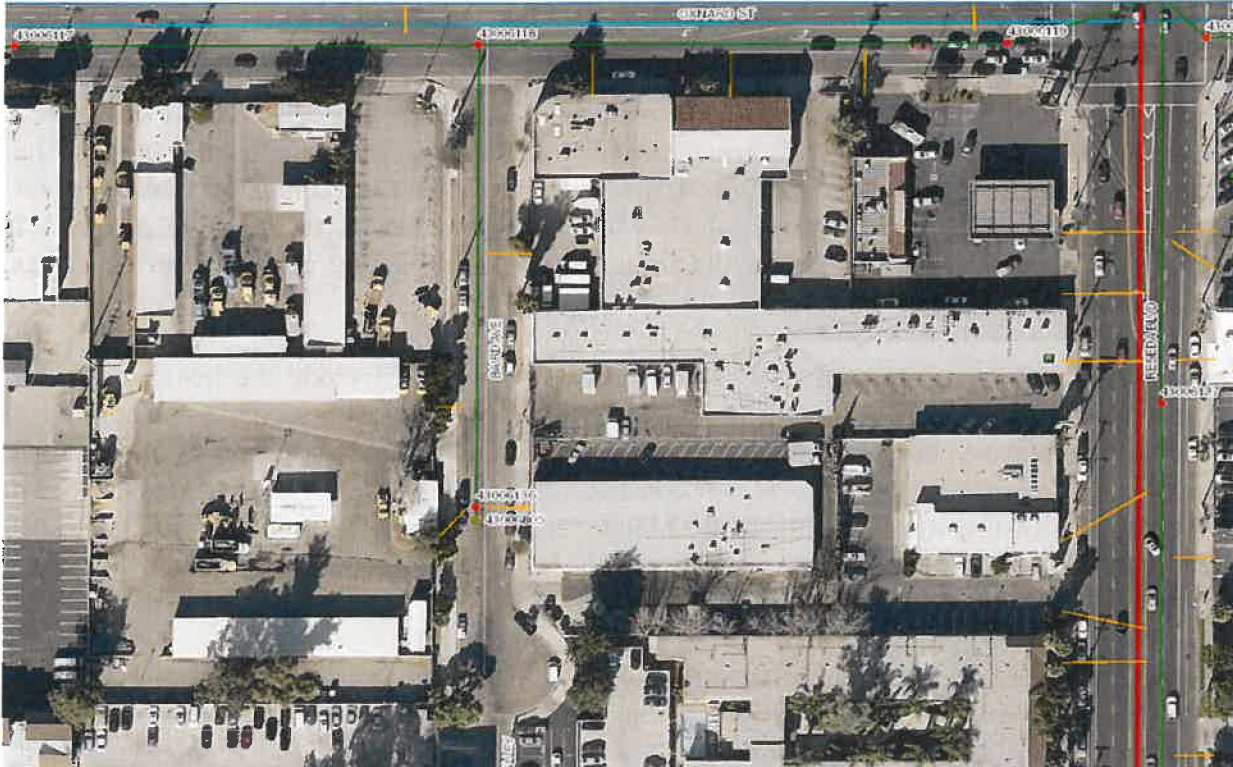


Figure 2: LASAN-WCSD Yard at 18560 Oxnard St, Tarzana CA 91335 (LASAN-WCSD Yard). Maintenance Hole #430-060136 is on Baird Avenue, south of Oxnard Street and adjacent to the yard.





Figure 3: LASAN-Solids Resources North Central Yard at 452 North San Fernando Road, Los Angeles, CA 90031. The maintenance hole is to be determined.

The RV disposal location is a sewer maintenance hole with a connection access in the maintenance hole cover for disposal. The area around the maintenance hole will be sloped so that all wastewater spills and cleanup water will flow to the maintenance hole. Sandbags or a permanent barrier will be placed around the perimeter to contain spills. Disposable latex gloves and containers of disinfectant will be available at the site. A trash receptacle will be positioned at the facility to receive soiled gloves or other trash. Figure 4 shows the City RV Disposal Facility at the Hyperion Water reclamation Plant for reference.

The costs for the construction of City RV disposal stations will include the installation of a maintenance hole if not already available, a special maintenance cover, secondary containment around the maintenance hole, installation of a hose bib from a potable waters source, hose, trash receptacles, and miscellaneous supplies. The construction cost for each station is estimated to be up to \$75,000. The staffing will be limited to one Maintenance Laborer between the hours of 9:00 A.M. to 3:00 P.M., one day per week, at an annual cost of \$25,000 per location. The hours can be split to cover two (2) days if desired to meet demand.

LASAN recommends these two RV disposal stations to be a pilot program. If this program is proven to be successful, LASAN will expand this program City wide. This pilot will require funding from the General Fund. LASAN's special funds, such as the Sewer Construction and Maintenance Fund, are limited to providing service to LASAN's ratepayers and cannot be used to provide this service. Some costs could be recovered by charging a fee to those using the facility, but this would increase the City's costs of managing those fees, so would not provide much in the way of full cost recovery.





Figure 4: Example of public RV disposal station.

### **RECOMMENDATIONS**

1. Authorize LASAN to establish a voucher program with the four private RV disposal stations identified in this report.
2. From the Sewer Construction and Maintenance Fund (SCMF), LASAN to identify funding of \$26,000 annually from the General Fund for the voucher program as identified in this report. The SCMF will carry the cost for late reimbursement for the General Fund or from end of year surplus General Fund.
3. LASAN to identify funding of \$150,000 from the General Fund for construction costs for two permanent City RV disposal stations to be located at the two LASAN maintenance yards in the San Fernando Valley. In addition, authorize LASAN to identify funding of \$50,000 for two Maintenance Laborers.
4. Request LASAN, in coordination with CAO, CLA, and the Controller's Office, to make the necessary financial and technical adjustments to implement the first four recommendations.

For any further questions or comments, please call me at 213-485-2210, or Adel Hagekhalil at 213-485-2210.

**ATTACHMENT No. 1. Estimated cost for two City RV stations.**

<b>As of May 2018</b>							
<b>Description</b>	<b>Class Code</b>	<b>Regular</b>	<b>Cost per hour</b>	<b>1 Day/week No Caps</b>	<b>Cost bi-weekly</b>	<b>Cost per year (52 days)</b>	<b>Cost per year with CAPS (52 days)</b>
Maintenance Laborer	3112-6	Regular	\$28.32	\$226.56	\$453.12	\$11,781.12	\$24,973.61

<b>Facility</b>	<b>One-time Cost per Facility</b>	<b>Annual Labor Cost</b>
North Central Yard	\$75,000.00	\$24,973.61
Reseda Yard	\$75,000.00	\$24,973.61
Total for first year	\$150,000.00	\$49,947.22
Total for subsequent years		\$49,947.22