


0220-05348-0000

**TRANSMITTAL**

TO Homelessness and Poverty Committee	DATE 02-28-2017	COUNCIL FILE NO. NEW
FROM Homeless Strategy Committee		COUNCIL DISTRICT ALL

At its meeting on January 26, 2017, the Homeless Strategy Committee heard a presentation from the Downtown Women’s Action Coalition on the results of the Downtown Women’s Needs Assessment. The presentation materials are attached for the record. No action was taken by the Homeless Strategy Committee on this item.

  
 Richard H. Llewellyn, Jr.  
 Interim City Administrative Officer

---

# INTRODUCTION

THE 2016 DOWNTOWN WOMEN'S NEEDS ASSESSMENT IS A COMMUNITY-BASED RESEARCH PROJECT, AND THE SIXTH IN A SERIES OF COMPREHENSIVE SURVEYS ON THE NEEDS, CHARACTERISTICS, AND CONDITIONS FACING HOMELESS AND EXTREMELY LOW-INCOME WOMEN LIVING IN DOWNTOWN LOS ANGELES.

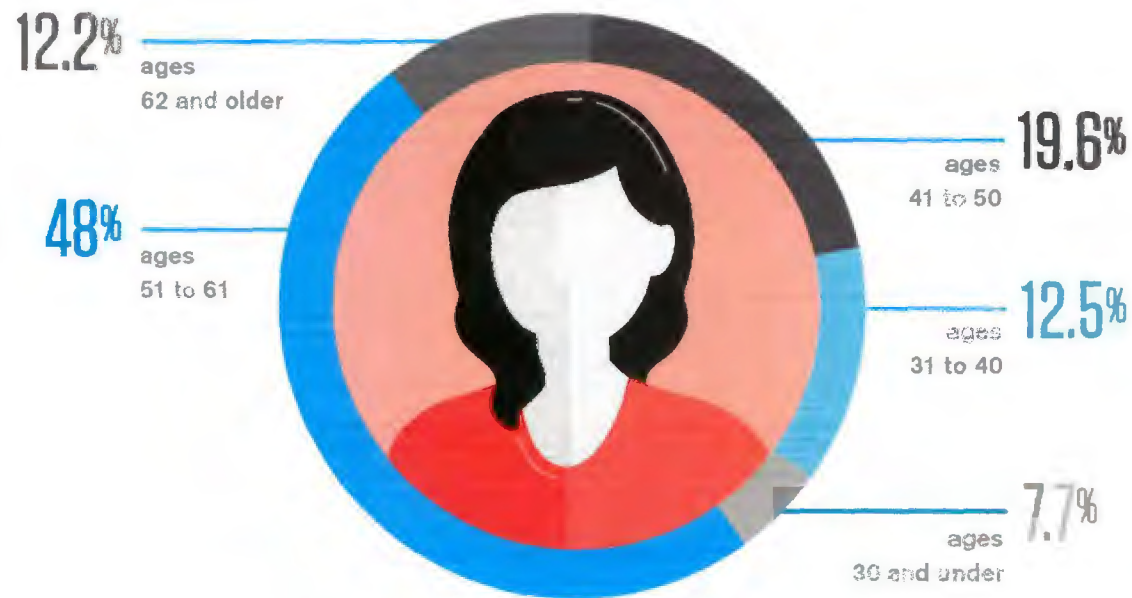
---



**“EVERY THREE YEARS SINCE 2001, DWAC HAS CONDUCTED THIS SURVEY WITH THE GOAL OF BETTER INFORMING ALL THOSE WORKING TO IMPROVE THE HEALTH AND SAFETY OF WOMEN LIVING DOWNTOWN.”**

# AGE

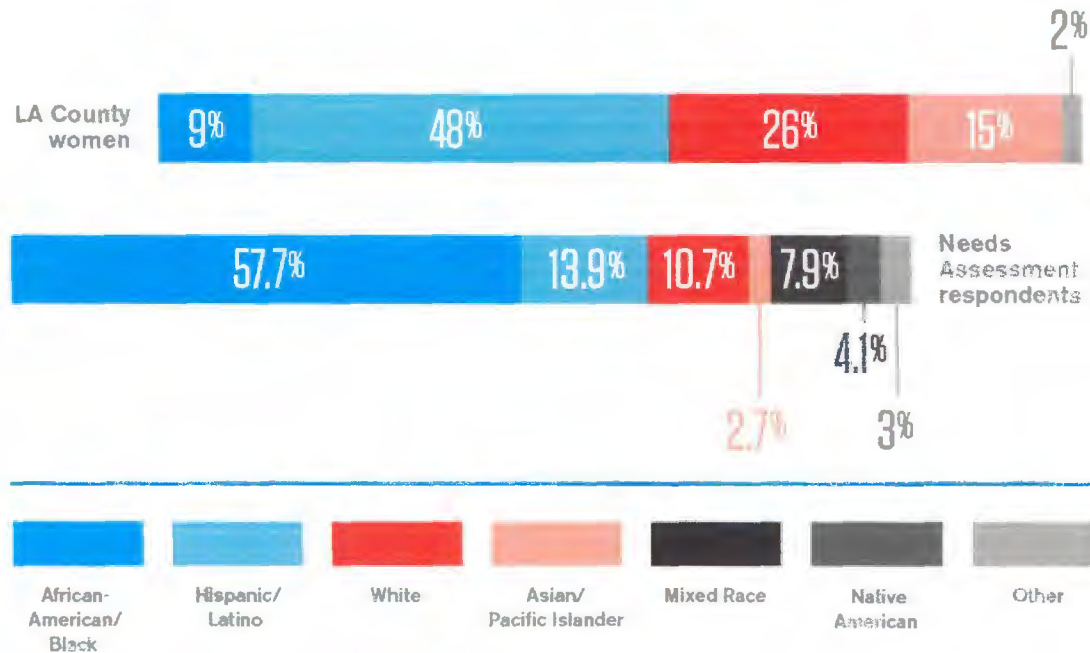
DEMOGRAPHIC DATA SHOWS WOMEN IN SKID ROW ARE FAR MORE LIKELY TO BE OLDER AND AFRICAN-AMERICAN THAN WOMEN IN LA COUNTY, SUGGESTING THESE GROUPS EXPERIENCE HOMELESSNESS AND EXTREME POVERTY AT DISPROPORTIONATELY HIGH LEVELS.



**SOLUTIONS:** Demographics data shows the need for culturally competent services that target older women, and the impact of institutionalized racism as a factor causing homelessness.

# RACE & ETHNICITY

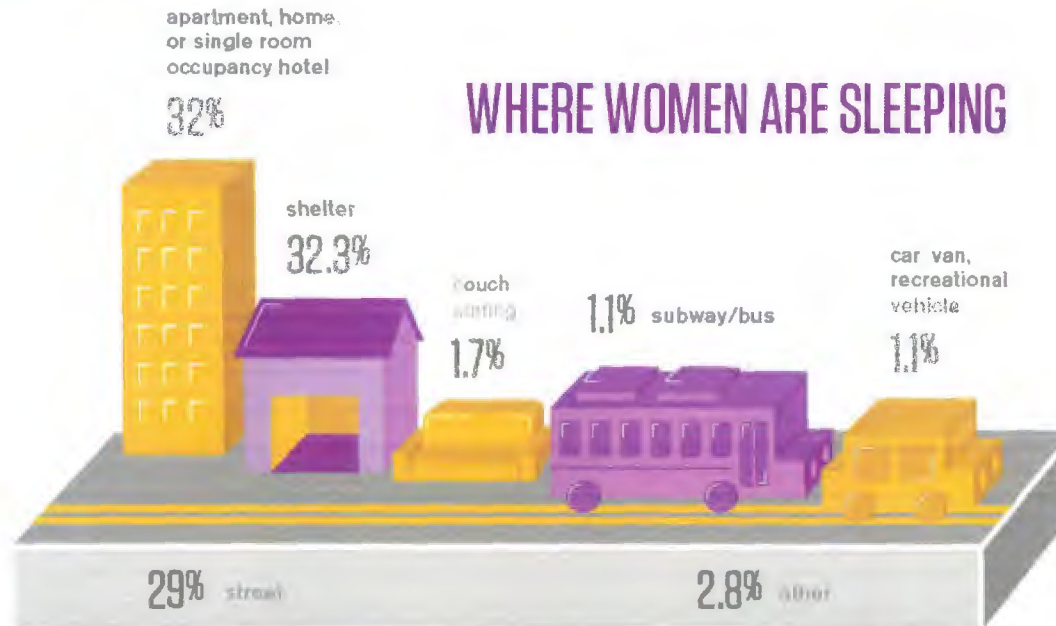
DEMOGRAPHIC DATA SHOWS WOMEN IN SKID ROW ARE FAR MORE LIKELY TO BE OLDER AND AFRICAN-AMERICAN THAN WOMEN IN LA COUNTY, SUGGESTING THESE GROUPS EXPERIENCE HOMELESSNESS AND EXTREME POVERTY AT DISPROPORTIONATELY HIGH LEVELS.



**SOLUTIONS:** We need for culturally competent services that target older women and the impact of institutionalized racism as a factor causing homelessness.

# HOUSING

A LACK OF AFFORDABLE, ACCESSIBLE HOUSING FOR WOMEN IS ONE OF THE MAJOR CAUSES OF THE 55% INCREASE IN LA COUNTY WOMEN EXPERIENCING HOMELESSNESS; 73% OF SURVEY RESPONDENTS LISTED HOUSING AS THE MOST-NEEDED RESOURCE TO IMPROVE THE DOWNTOWN COMMUNITY.



**SOLUTIONS:** More affordable and supportive housing units must be created and specified for very-low income and extremely-low income women in order to eliminate one of the major causes of homelessness.

---

# HEALTHCARE

MORE WOMEN THAN EVER HAVE MEDICAL COVERAGE OR HEALTH INSURANCE (86.2%); HOWEVER, DESPITE IMPROVED ACCESS TO TREATMENT, SURVEY RESPONDENTS' PHYSICAL AND MENTAL HEALTH HAS WORSENERD.

---



55.6%

of women reported their physical health as being "fair" or "poor" in 2016.

42.3%

of women reported their physical health as being "fair" or "poor" in 2013

**SOLUTIONS:** The survey data demonstrates that as women age, their health worsens, and points to a need for healthcare that treats the whole person, not just specific ailments.

# VIOLENCE AGAINST WOMEN

THE PERSISTENTLY HIGH RATE OF INTIMATE PARTNER VIOLENCE IS ONE OF THE MOST DISTINGUISHING DIFFERENCES BETWEEN WOMEN AND MEN EXPERIENCING HOMELESSNESS.



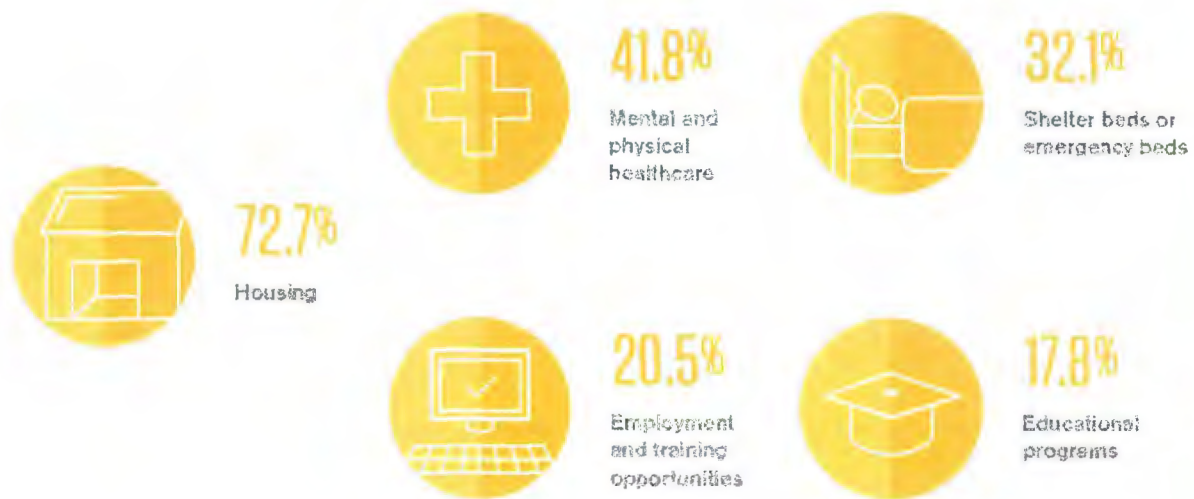
**SOLUTIONS:** Prioritizing Trauma-Informed Care training for service providers, implementing “Safety Zones,” and advocating for more single-gender housing and shelters are all part of DWAC’s commitment to women’s safety in Skid Row.

---

# COMMUNITY RESOURCES

WOMEN IDENTIFIED THE TOP FIVE RESOURCES THEY THINK ARE MOST NEEDED TO IMPROVE THE DOWNTOWN COMMUNITY.

---



**SOLUTIONS:** You can support agencies in Skid Row by donating money, time, or in-kind goods. Learn more at: [DowntownWomensCenter.org/NeedsAssessment](http://DowntownWomensCenter.org/NeedsAssessment).