

# **EXIDE CLEANUP PROJECT Update**

**City of Los Angeles Planning and Land  
Use Management Committee**

**Tuesday, June 19, 2018**

# DTSC Progress on Exide Closure and Cleanups

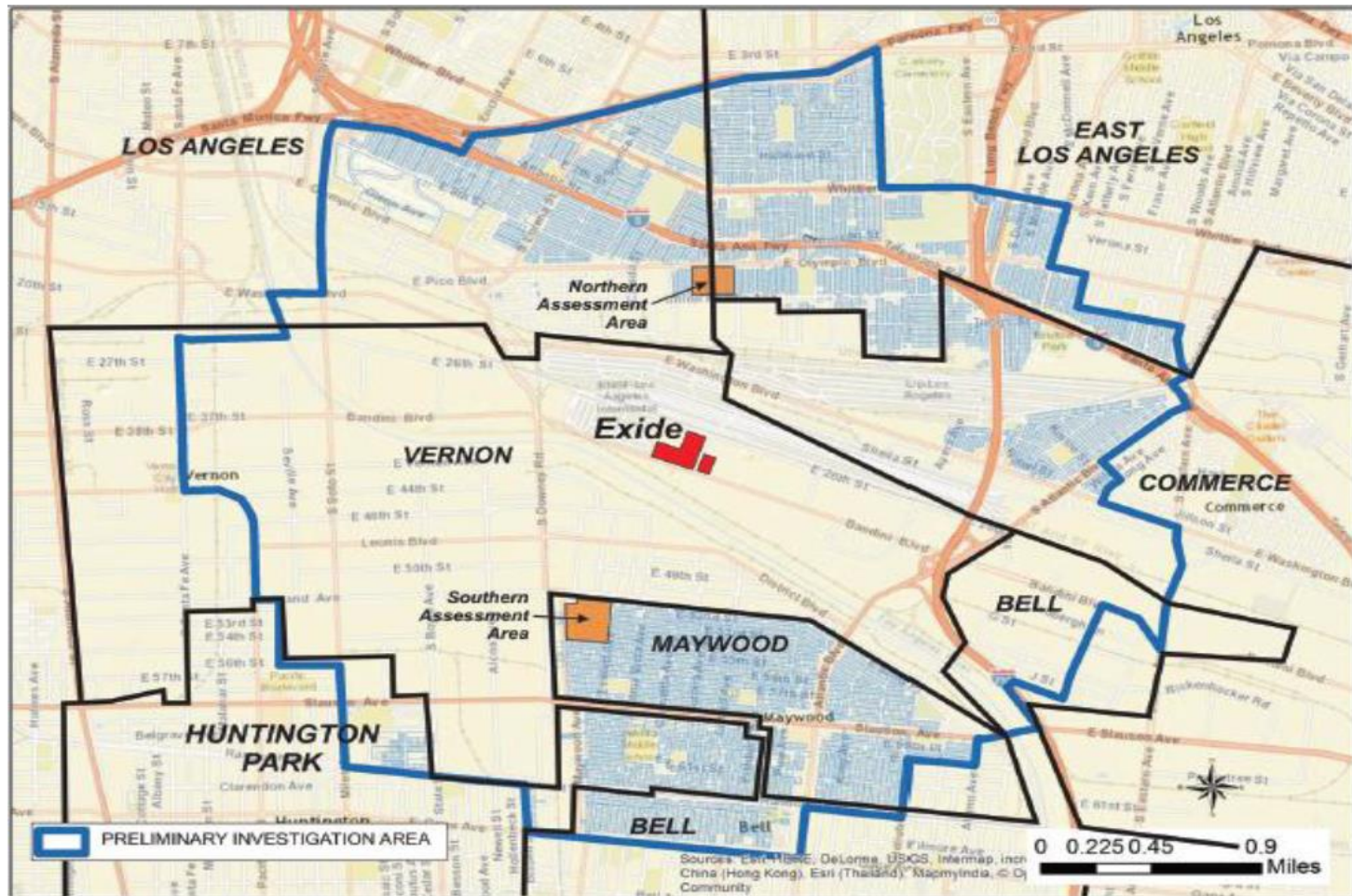
- Corrective Action Stipulation & Order (2014)
- Notified Exide of intent to deny Exide's permit (2015)
- Facility Closure Plan and Final EIR approved with extensive public engagement (2016)
- Prepared & approved a residential Removal Action Plan (Cleanup Plan) and Final EIR with extensive public engagement in less than one year (2017)
- Contacted residents of over 10,000 parcels to obtain access agreements
- Sampled over 8,500 parcels and continues to do more
- As of June 15, 2018 oversaw cleanup of 335 parcels
- Currently implementing the Cleanup Plan and continuing cleanups under a contract with NEC

# Off-Site Residential Cleanup Within the Preliminary Investigation Area (PIA)





# The Preliminary Investigation Area (PIA)



# Residential Cleanup Overview

- DTSC ordered Exide to sample and clean up parcels in the Initial Assessment Area (2014)
- Based on the results, DTSC was appropriated \$7 million emergency funding to sample 1,500 parcels, clean up 50 parcels & begin work on the Cleanup Plan (2015/2016)
- DTSC was appropriated \$176.6 million to sample properties in the PIA & clean up properties with the highest lead concentration in soil and greatest exposure risk to sensitive population (2016)
- DTSC began sampling in the PIA, while preparing the Draft Cleanup Plan and Draft EIR (2016)
- DTSC approved the Final Cleanup Plan and Final EIR with extensive public engagement in less than one year (2017)
- DTSC continued cleanups under Time Critical Removal Action authority (2017/2018)
- DTSC started implementation of the Cleanup Plan & is continuing to clean up properties pursuant to the Cleanup Plan (2018)

# Parcels Sampled, Prioritized, & Cleaned Up

(As of June 15, 2018)

## Sampled:

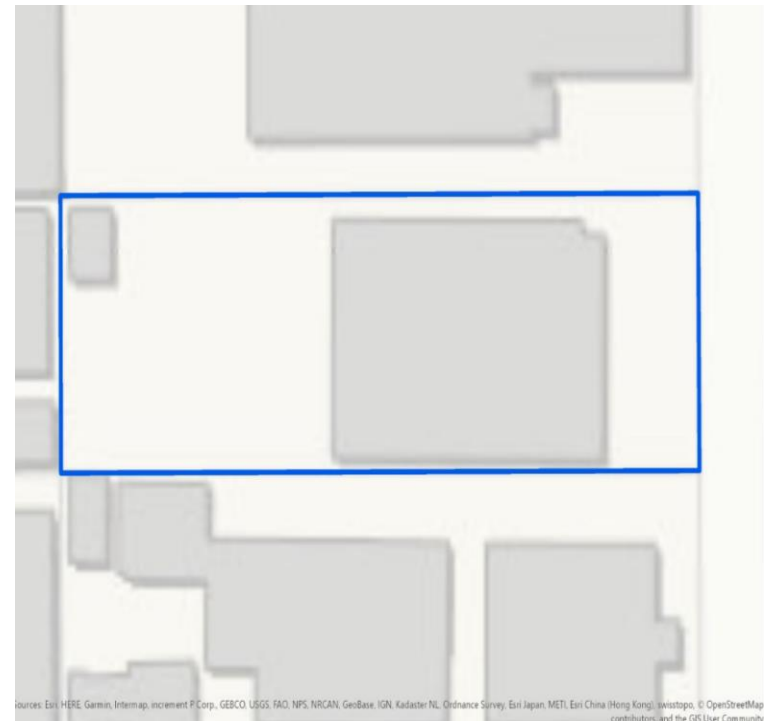
- Over 8,500 with Unique Assessor's Parcel Numbers in the PIA
- 1,526 within the City of Los Angeles

## Prioritized:

- Approximately 2,500 Parcels in the PIA
- 620 within the City of Los Angeles

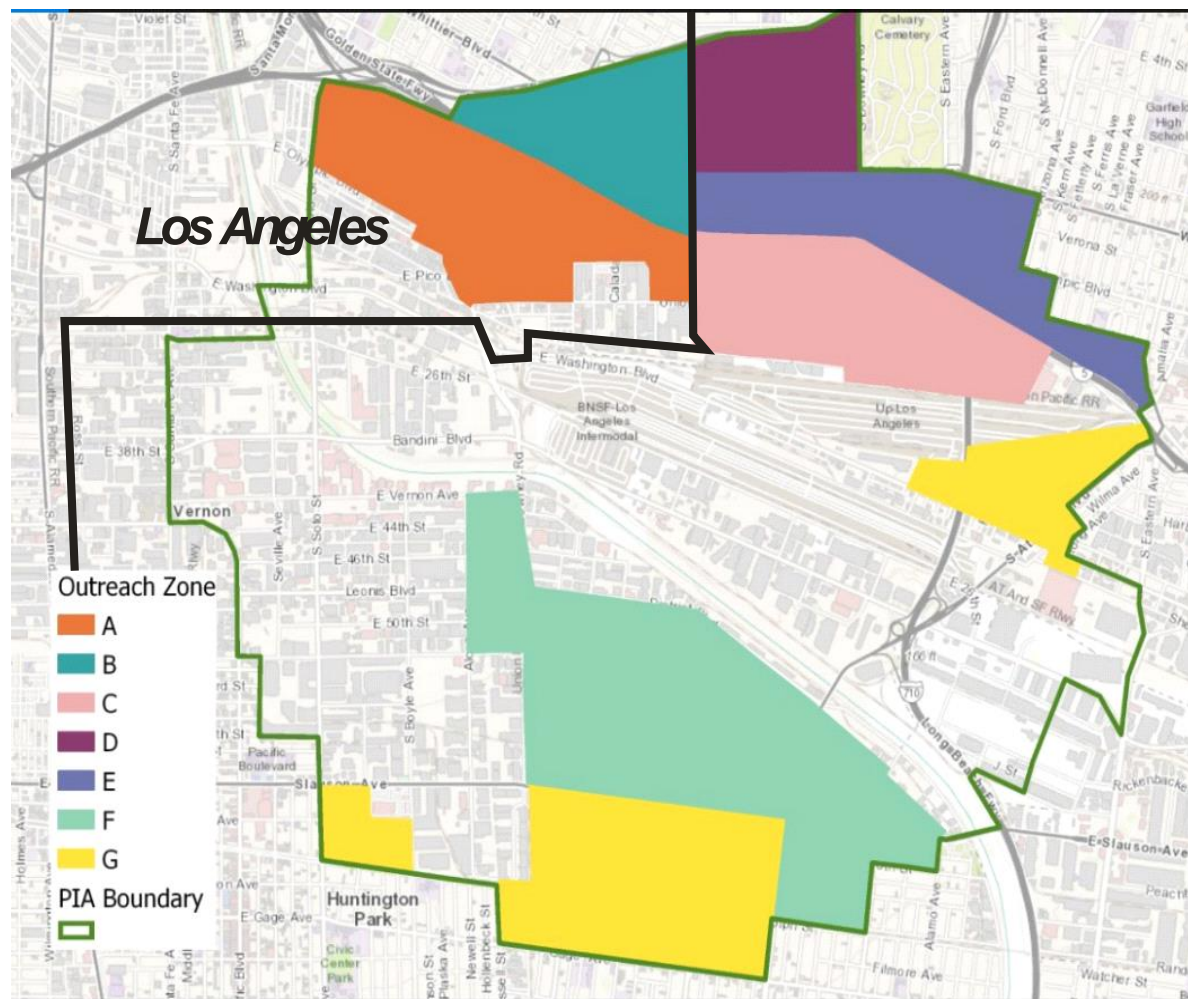
## Cleaned Up:

- 335 Parcels in the PIA
- 70 within the City of Los Angeles



# Ongoing Cleanup Activities

- Outreach activities are focused in 7 outreach zones
- Outreach Zones A & B in City of Los Angeles
- Zones A & B include 620 prioritized parcels
- Safeguards protect the health of community members and workers





# Ongoing Cleanup Activities (Cont'd)

- **Use of low-emission trucks and equipment**
- **Air monitoring**
- **Dust suppression**
- **Visible flags on trucks carrying contaminated soil**
- **Specific truck routes identified in Transportation and Traffic Management Plans**
- **Other safeguards to protect the health of community members and workers**





# Exide Facility Closure



# **Exide Closure & Corrective Action Obligations**

- **Provide Financial Assurance for Closure & Corrective Actions**
- **Submit Closure Plans for Phase I & Phase II Closure**
- **Characterize full extent of On-site and Off-site contamination**
- **Develop Corrective Measures to address On-site and Off-site contamination**
- **Implement the Corrective Action Remedies selected by DTSC**

# Exide Facility Closure

- DTSC notified Exide of intent to deny Exide's permit (Feb. 2015)
- Amended Stipulation & Order signed by Bankruptcy Court (Mar. 2015)
- Exide submitted a Draft Closure Plan to DTSC for Phase I Closure (May 2015)
- DTSC approved the Phase I Final Closure Plan and Final EIR after extensive public engagement (Dec. 2016)
- Exide submitted its Phase I Closure Implementation Plan (Jan. 2017)
- DTSC approved the Phase I Closure Implementation Plan (Oct. 2017)
- Phase I Closure work began Nov. 2017, scheduled through Fall 2020

# Closure, Phase I - Elements

- **Removal of Regulated Units**
- **Removal of Containment Buildings and some ancillary buildings**
- **Conduct soil sampling**
  - **Develop plan for Phase II to address soils and foundations**
  - **Will be coordinated with ongoing corrective action to characterize extents of contamination**



# Site Layout

## LEGEND

 SEGMENTED ENCLOSURE FOOTPRINT

 COVERED LAYDOWN

 DELIVERY ENTRANCES

 BUILDING STACKS

 A-FRAME STACKS

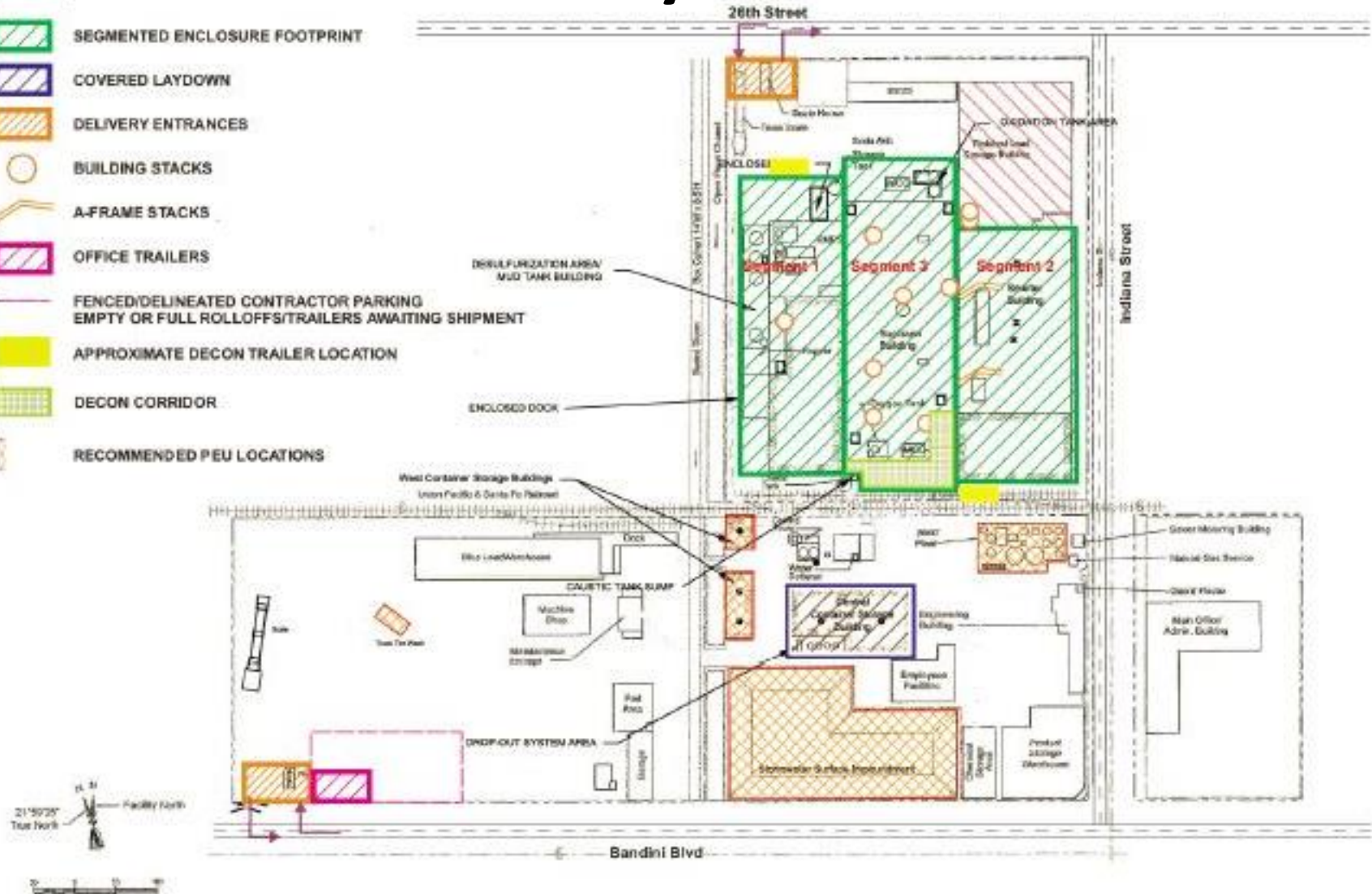
 OFFICE TRAILERS

 FENCED/DELINEATED CONTRACTOR PARKING  
EMPTY OR FULL ROLLOFFS/TRAILERS AWAITING SHIPMENT

 APPROXIMATE DECON TRAILER LOCATION

 DECON CORRIDOR

 RECOMMENDED PEU LOCATIONS



# Work Completed (Nov 2017 to Present)

- **Preconstruction Activities**
  - Mobilize and set up equipment
  - De-energize and/or reroute electrical lines
- Sump and crack sealing (industrial level caulking)
- Dry decontamination (HEPA vacuuming)
- Wet decontamination (pressure washing)
- Off-site shipment/disposal of waste and equipment
- Preparation for Full Enclosure Unit, aka Haki System (scaffolding setup)

**Additional Information about Closure can be found at:**

**<http://www.dtsc.ca.gov/HazardousWaste/Projects/ExideClosure.cfm>**

# Full Enclosure Unit Construction

- Scaffolding
  - For support of full enclosure unit



# Looking Forward

- **We are committed to cleaning up residential properties, schools, parks, day care centers, and child care facilities with the highest levels of lead in soil and greatest risk of exposure, within roughly 1.7 miles of the former Exide Technologies facility in Vernon. Our top priority is protecting the health and safety of people in this community, especially the youngest and most vulnerable.**
- **This cleanup is the largest of its kind undertaken in California; it demonstrates the Administration's strong commitment to protecting the health of people who live in these communities.**
- **DTSC will pursue Exide to recover the costs of investigation and cleanup, while the work of sampling and cleaning the impacted properties continues.**