

RESOLUTION

WHEREAS, the subject property is located within the area covered by the West Los Angeles Community Plan ("Community Plan"), which was adopted by the City Council on July 27, 1999 (CF 98-2024); and

WHEREAS, the applicant is proposing to develop a mixed-use project consisting of development of a mixed-use project, consisting of 516 residential units, 50,000-square foot grocery store, 40,000 square feet of general retail use, and 9,000 square feet of restaurant uses, 200,000 square feet of creative office floor area, and subterranean parking with a total of 1,548 spaces for the project in the West Los Angeles community; and

WHEREAS, to carry out the above-referenced project, the applicant has requested a General Plan Amendment to (a) change the land use designation for the subject property from Light Industrial to General Commercial within the West Los Angeles Community Plan ("Community Plan"); and, (b) amend the General Plan Generalized Land Use Map for the Community Plan area to reflect the Community Commercial land use designation; and

WHEREAS, the General Plan Amendment is consistent with Charter Sections 555, 556, and 558, representing an Amendment in Part of the West Los Angeles Community Plan, necessary to correct a conflict between the zoning and land use designation; and

WHEREAS, the City Planning Commission at its meeting of May 26, 2016, approved the foregoing General Plan Amendment; and

WHEREAS, the General Plan Amendment is necessary to achieve and maintain consistency between zoning and the adopted Community Plan as required by California State law; and

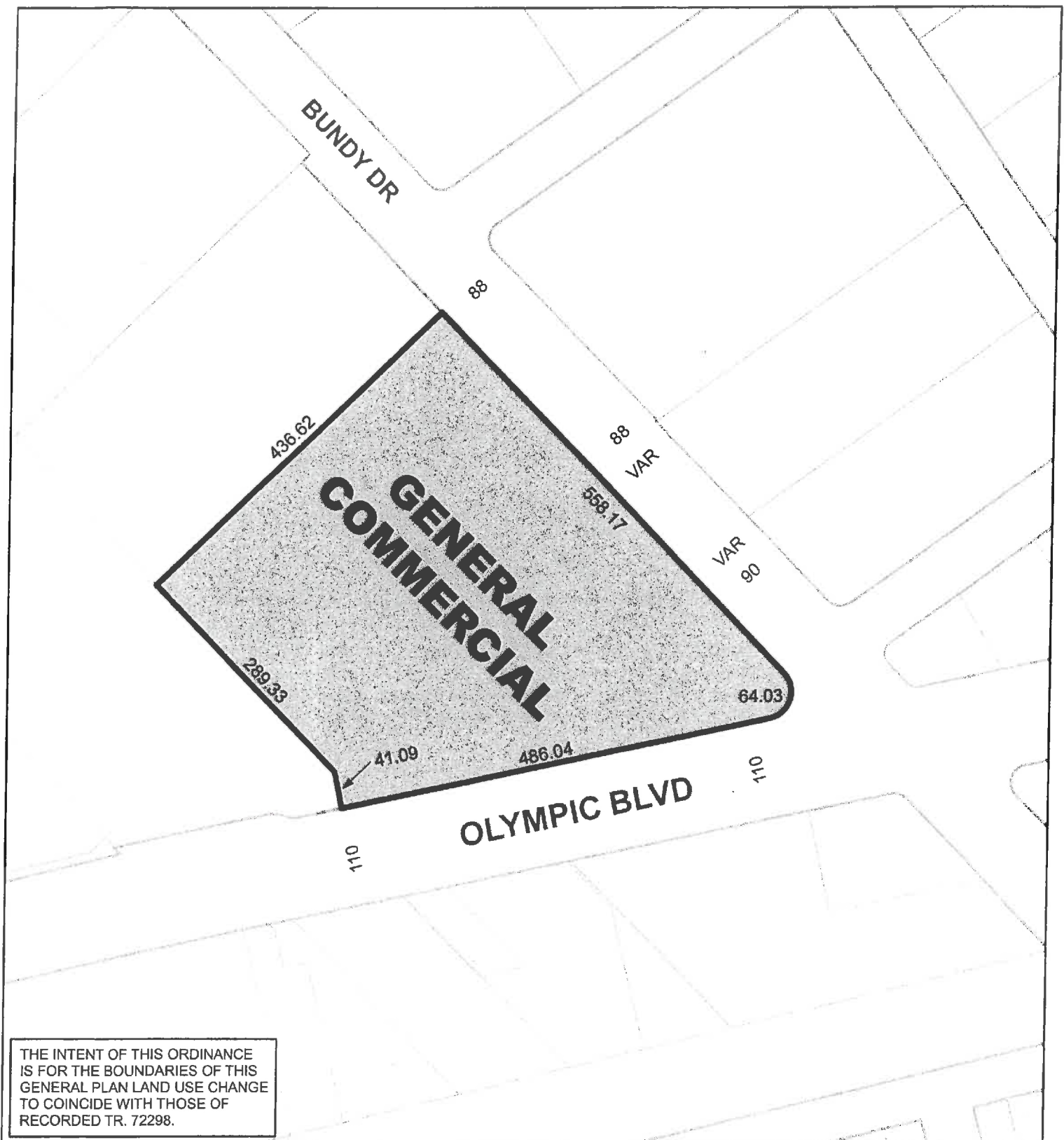
WHEREAS, pursuant to the provisions of the Los Angeles City Charter, the Mayor and the City Planning Commission have transmitted their recommendations; and

WHEREAS, the requested General Plan Amendment is consistent with the intent and purpose of the West Los Angeles Community Plan to designate land uses in an orderly and unified manner; and

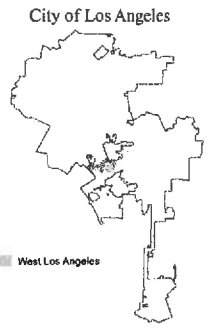
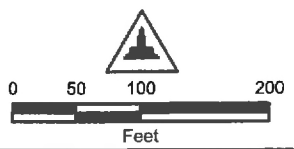
WHEREAS, the subject request would provide for a more logical and uniform pattern of planned land use development that is compatible with surrounding land use designations on the General Plan; and

WHEREAS, the project has been reviewed by Environmental Impact Report, SCH No. 2013031057, in accordance with the City's Guidelines for implementation of the California Environmental Quality Act ("CEQA") by the City Planning Department.

NOW, THEREFORE, BE IT RESOLVED that the Community Plan shall be amended as shown on the attached General Plan Amendment Map.



THE INTENT OF THIS ORDINANCE IS FOR THE BOUNDARIES OF THIS GENERAL PLAN LAND USE CHANGE TO COINCIDE WITH THOSE OF RECORDED TR. 72298.



C.M. 123 B 149 CPC-2013-2567-GPA-VZC-HD-CU-MCUP-CUX-ZV-ZAD-SPR

AAV & E

WEST LOS ANGELES

033016