

CONCEPTUAL PERSPECTIVE PLAN

~~9 Visuals Paramount Project - South of Melrose CD4~~
Page 11



Merging Historic Preservation with Green Design

The KCAL building, originally built for radio broadcasting in the 1930s, will become another focal point for Paramount Pictures, sharing atrium space with the studio's new LEED-designed headquarters building to seamlessly merge the past with the present.

<http://www.paramounthollywoodproject.com/gallery/>

9 Visuals
page 2
~~Paramount Project - South of Melrose C04~~
Page 6

Existing Conditions



LOCATION



Project Conditions



Looking north on N Plymouth Blvd from just south of the intersection with Clinton St



Figure IV.A.1-11
Existing and Proposed Views – Location 10

Handwritten signature/initials

*9 VISUALS Paramount Project - South of Inverse CAY
page 5 Page 3*



CONCEPTUAL CIRCULATION PLAN

Levin & Associates Architects RIOS CLEMENTI HALE STUDIOS

p 4



MARTIN AND FEIRIS

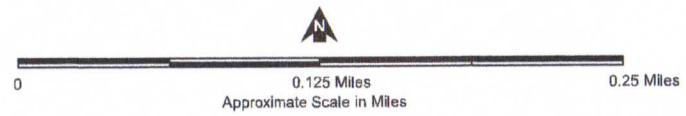
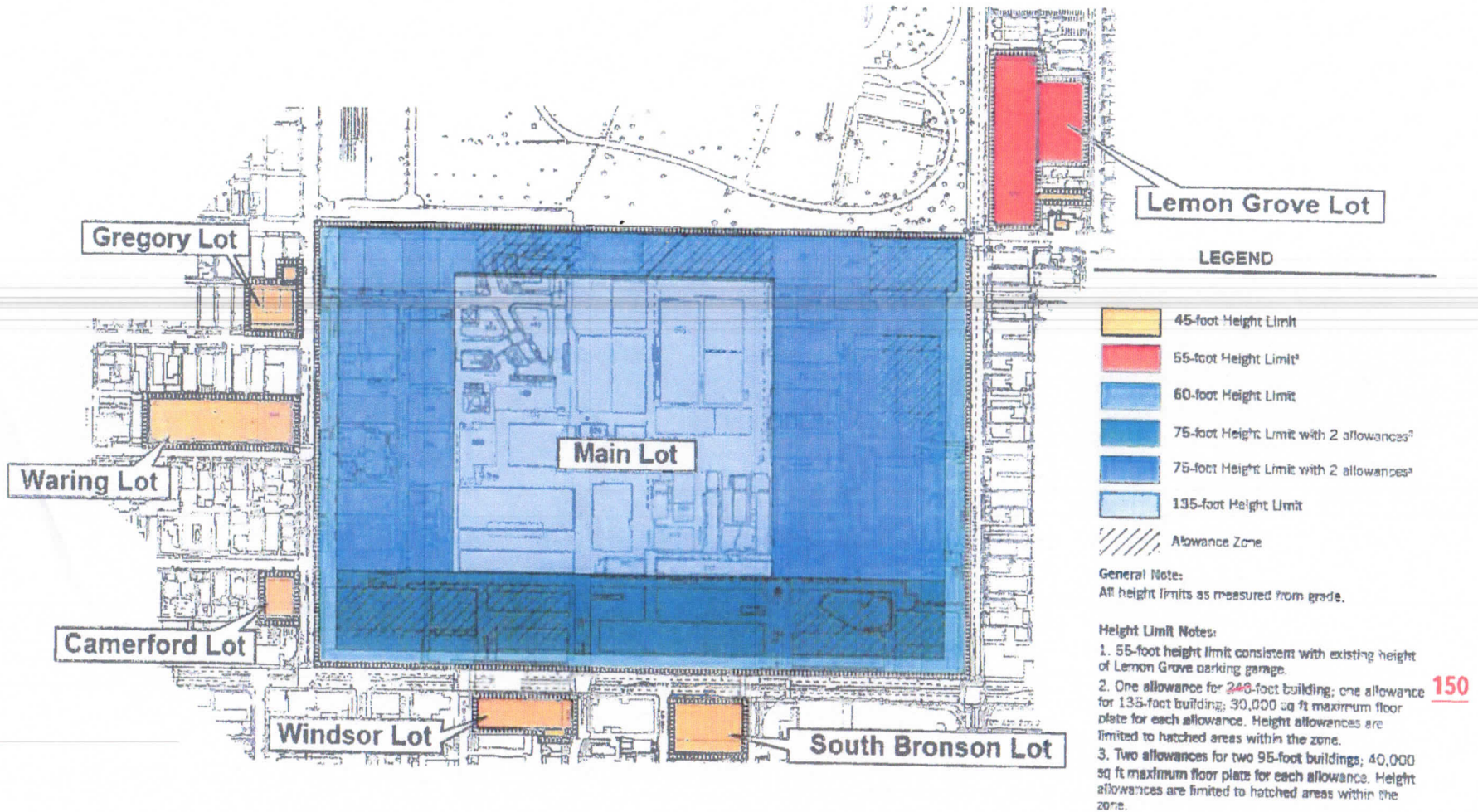


Figure IV.A.3-9
Project Spring Shadows
9:00AM

9 visuals Paramount Project - South of Melrose CDK
Page 45

Building Height Zone Map



p 6

150



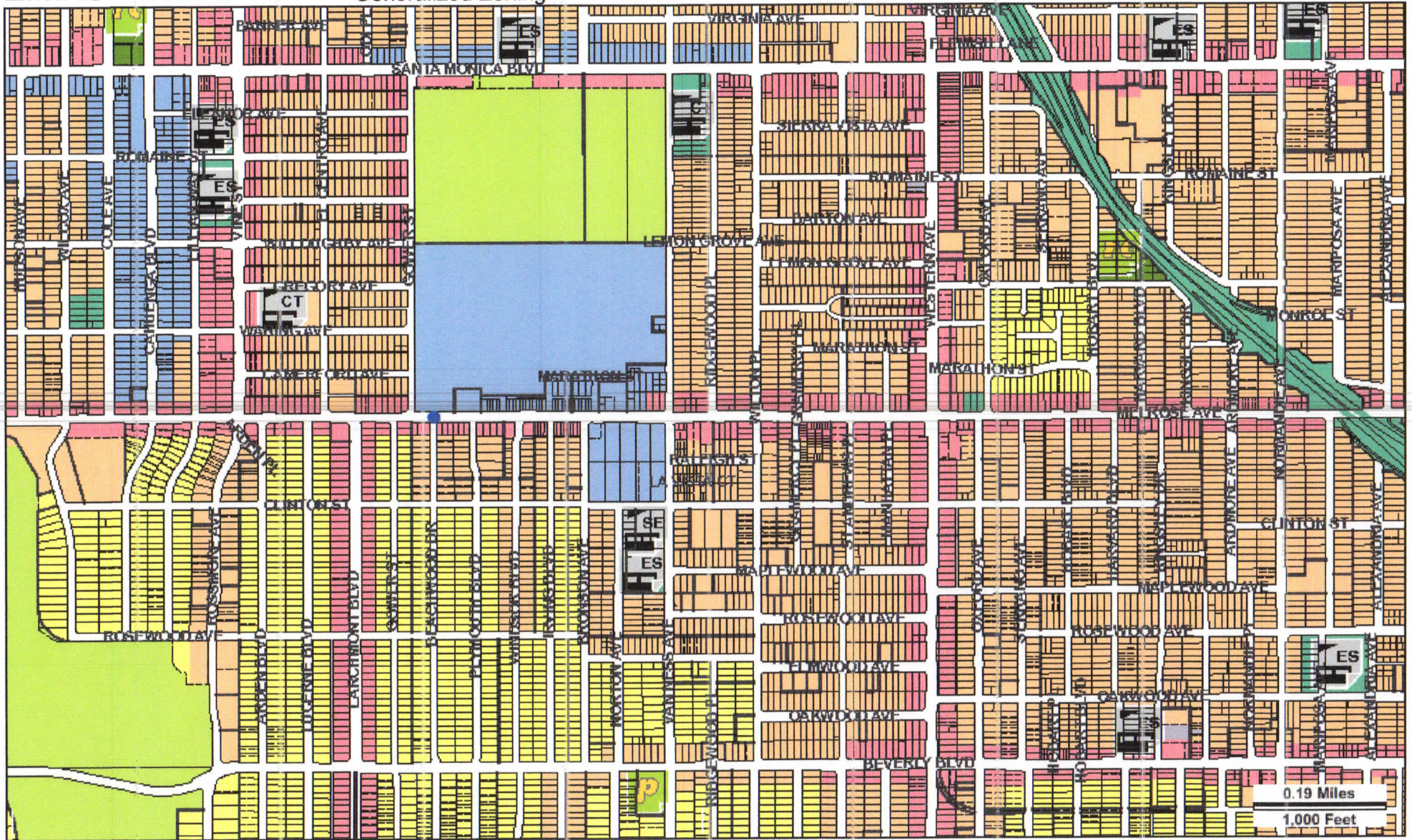
Address: 5555 W MELROSE AVE
 APN: 5534037009
 PIN #: 141B189 5

Tract: TR 30487
 Block: None
 Lot: LT 1
 Arb: None

Zoning: [Q]M1-2D
 General Plan: Limited Manufacturing

P7

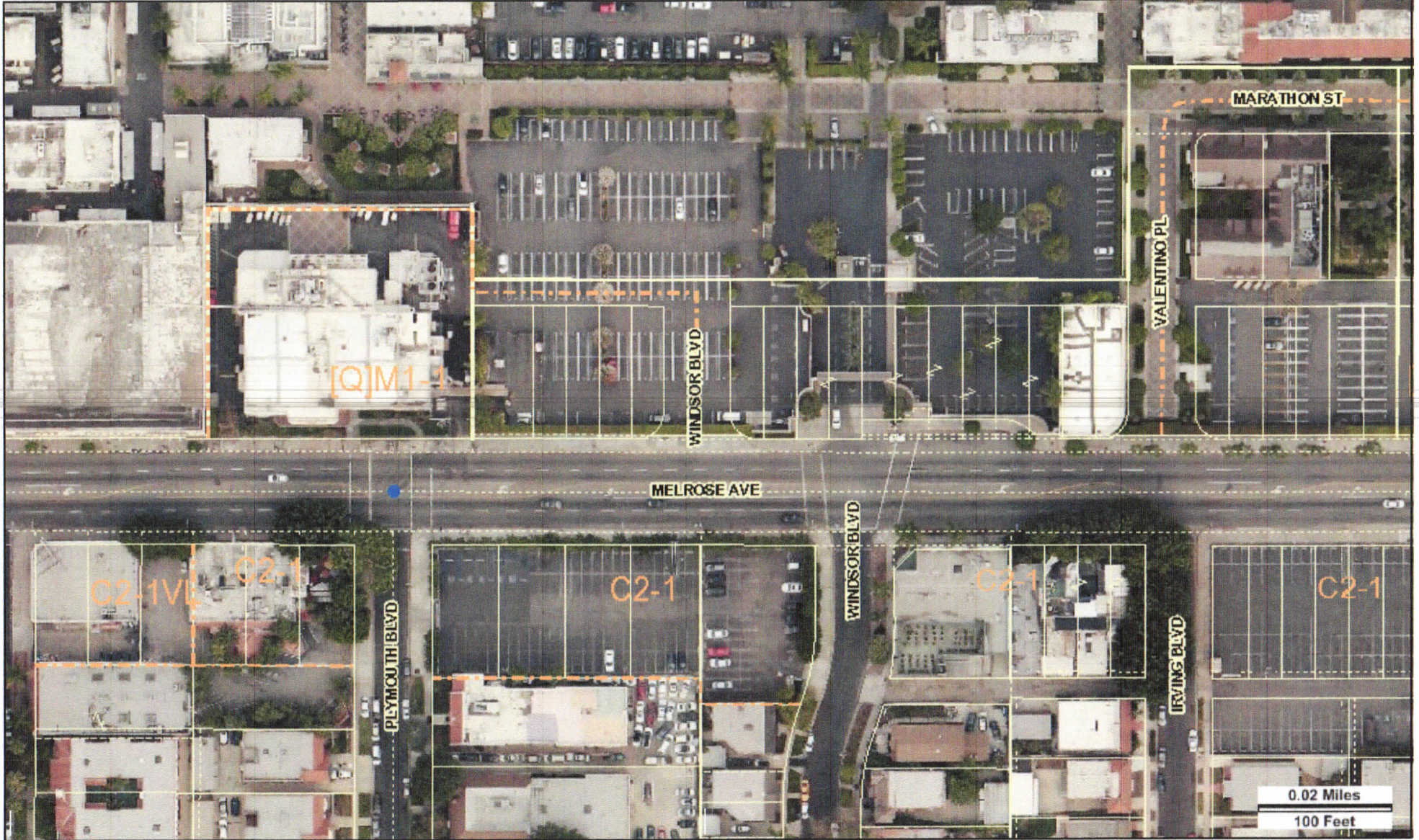




9 visuals ~~Paradigm Project~~ - South of Anheuser COX

MAD - FEIR 3
Page 8





*9 visuals Paramount Project - South of Melrose C04
MAB-FER 2
Page 89*

