

RESOLUTION

WHEREAS, the subject project is located within the area covered by the Mission Hills – Panorama City – North Hills Community Plan adopted by the City Council on June 9, 1999; and

WHEREAS, the City Planning Commission, at its meeting on October 27, 2016, approved a General Plan Amendment from Low Residential to Low Medium I Residential for the subject property at 14701-14719 West Plummer Street; and

WHEREAS, the City Planning Commission approved and recommended the adoption by the City Council of a Zone Change from RA-1 to (T)(Q)RD3-1 for the subject property located at 14701-14719 West Plummer Street; and

WHEREAS, the City Planning Commission approved the project for the demolition of existing structures and the construction, use, and maintenance of twenty-eight small lot homes in conjunction with a small lot subdivision; and

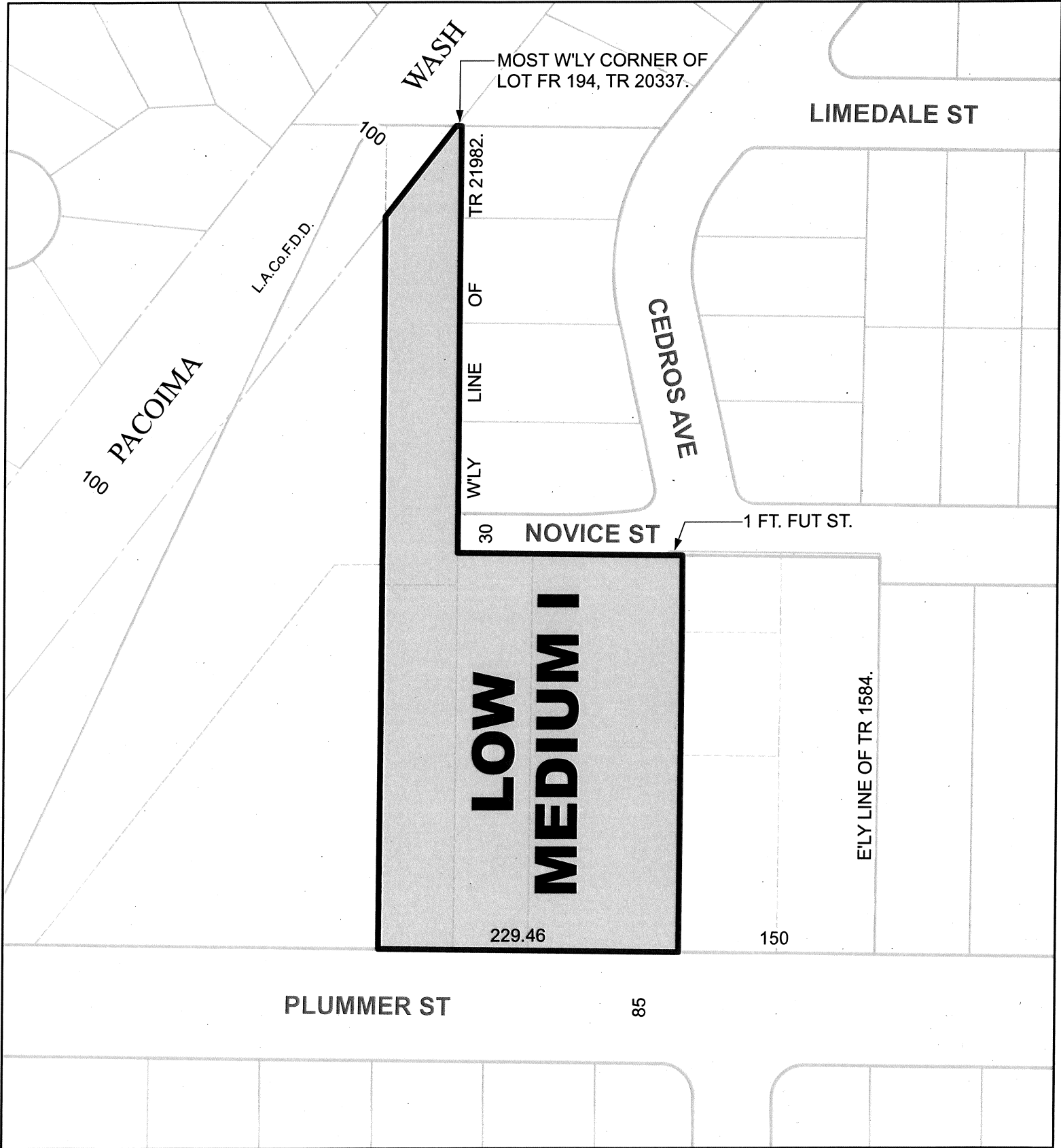
WHEREAS, the requested General Plan Amendment is consistent with the intent and purpose of the adopted Mission Hills – Panorama City – North Hills Community Plan to designate land use in an orderly and unified manner; and

WHEREAS, the Low Medium I Residential land use designation and the (T)(Q)RD3-1 Zone Change will allow the project as described above which is consistent with the Plan and Zone; and

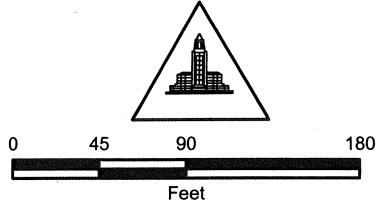
WHEREAS, pursuant to the provisions of the Los Angeles City Charter, the Mayor and City Planning Commission have transmitted their recommendations; and

WHEREAS, the subject proposal has prepared a Mitigated Negative Declaration No. ENV-2016-1169-MND in accordance with the City’s Guidelines for implementation of the California Environmental Quality Act (CEQA);

NOW, THEREFORE, BE IT RESOLVED that the Mission Hills – Panorama City – North Hills Community Plan be amended as shown on the attached General Plan Amendment map.



THE INTENT OF THIS ORDINANCE IS FOR THE BOUNDARIES OF THIS GENERAL PLAN LAND USE CHANGE TO COINCIDE WITH THOSE OF RECORDED TR. 71232.



CPC-2016-1168-GPA-ZC-BL

AA/af 110816

Mission Hills - Panorama City - North Hills

City of Los Angeles

