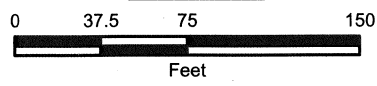
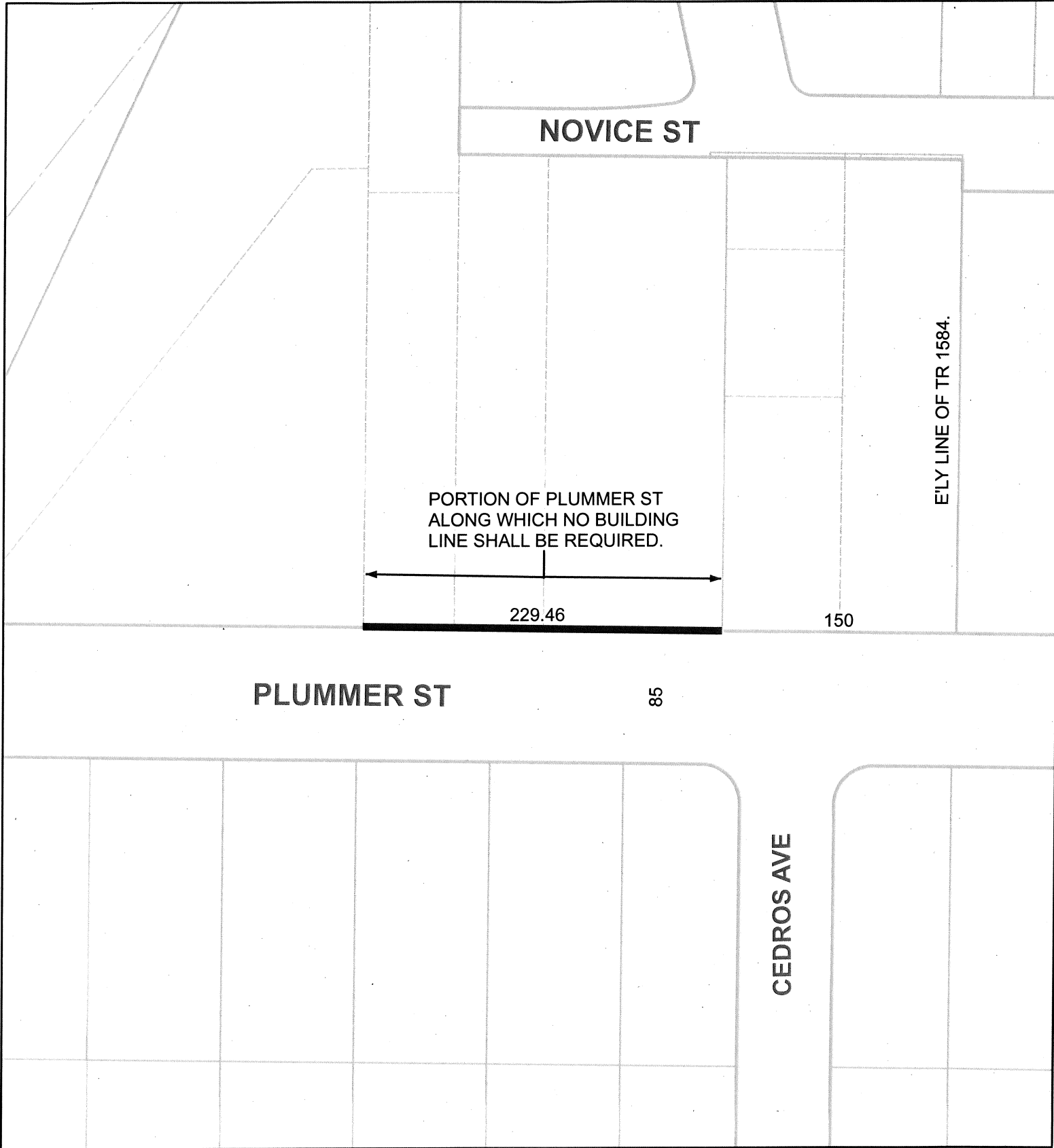


ORDINANCE NO. \_\_\_\_\_

An Ordinance amending Ordinance No. 99,739 establishing a building line.

THE PEOPLE OF THE CITY OF LOS ANGELES DO ORDAIN AS FOLLOWS:

Section \_\_. Ordinance No. 99,739; entitled . . . An Ordinance ordering the establishment of a building line on both sides of PLUMMER STREET between Woodman Avenue and Valley Circle Boulevard. . . was passed by the Council of the City of Los Angeles at its meeting of October 4, 1952, . . . is hereby amended by repealing the provisions establishing the building line on that portion of PLUMMER STREET, as depicted on the following diagram:

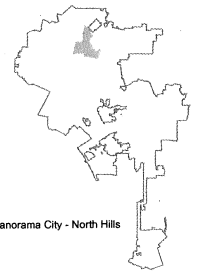


CPC-2016-1168-GPA-ZC-BL

AA/cf

110816

City of Los Angeles



**SECTION** \_\_. The City Clerk shall certify to the passage of this ordinance and have it published in accordance with Council policy, either in a daily newspaper circulated in the City of Los Angeles or by posting for ten days in three public places in the City of Los Angeles: one copy on the bulletin board located at the Main Street entrance to the Los Angeles City Hall; one copy on the bulletin board located at the Main Street entrance to the Los Angeles City Hall East; and one copy on the bulletin board located at the Temple Street entrance to the Los Angeles County Hall of Records.

I hereby certify that the foregoing ordinance was introduced at the Council of the City of Los Angeles, by a majority vote of all its members, at the meeting of \_\_\_\_\_

Holly L. Wolcott, City Clerk

By \_\_\_\_\_ Deputy

Approved \_\_\_\_\_

\_\_\_\_\_  
Mayor

Pursuant to Section 558 of the City Charter, the Los Angeles City Planning Commission on October 27, 2016, recommended this ordinance be adopted by the City Council.



James K. Williams, Commission Executive Assistant II  
City Planning Commission

File No: \_\_\_\_\_