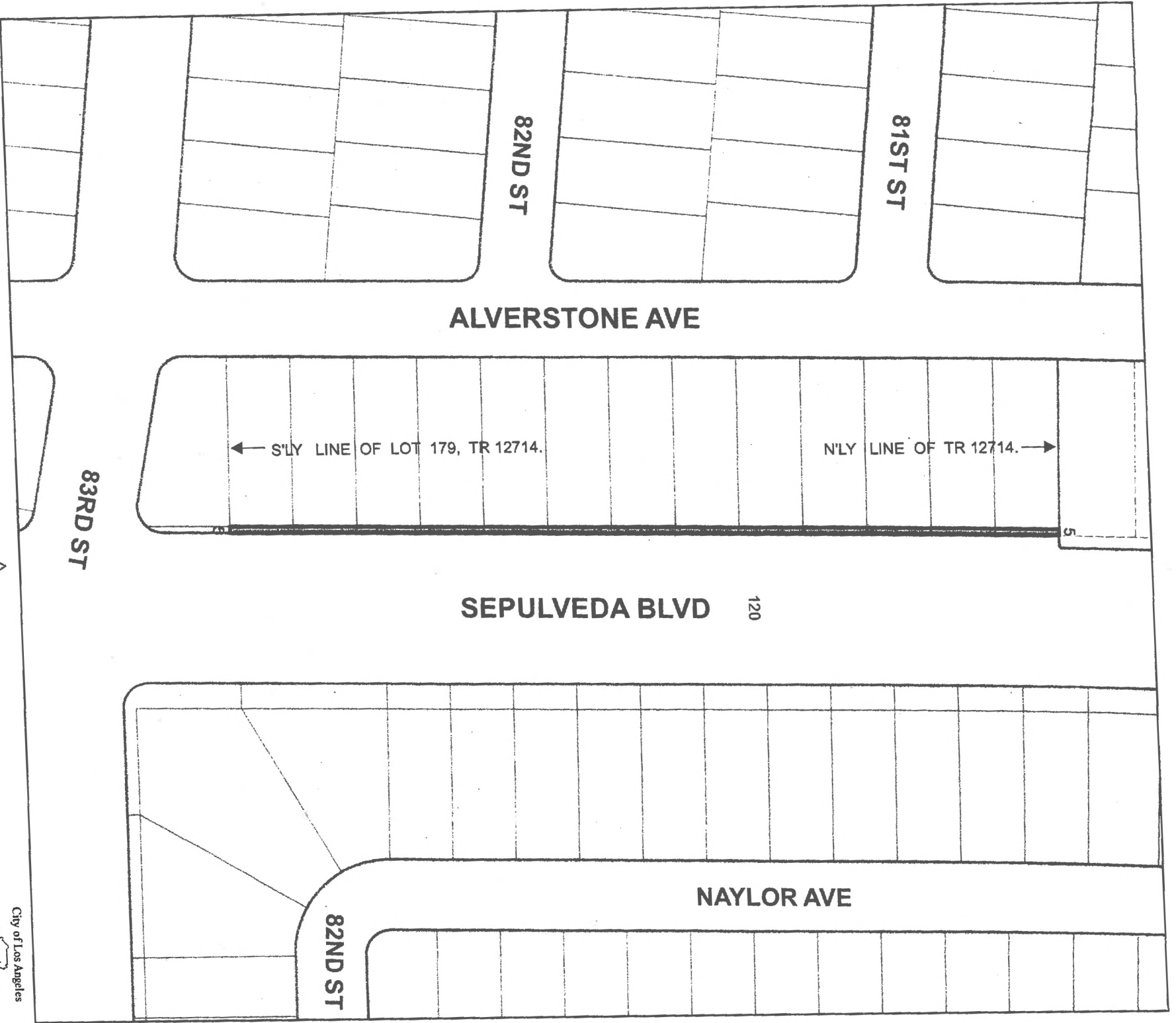


ORDINANCE NO. \_\_\_\_\_

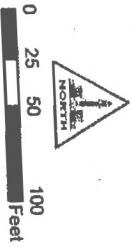
An ordinance amending Section 12.04 of the Los Angeles Municipal Code by amending the zoning map.

THE PEOPLE OF THE CITY OF LOS ANGELES DO ORDAIN AS FOLLOWS:

**Section 1.** Section 12.04 of the Los Angeles Municipal Code is hereby amended by changing the zone classifications of properties shown upon a portion of the Zoning Map incorporated therein and made a part of Article 2, Chapter 1 of the LAMC, so that such portion of the Zoning Map shall conform to the zoning on the map attached hereto and incorporated herein by this reference.



**PF-1**



C.M. 099 B 165

CPC-2016-1768-ZC-GPA

CF/

052616



**Sec. \_\_\_\_.** The City Clerk shall certify to the passage of this ordinance and have it published in accordance with Council policy, either in a daily newspaper circulated in the City of Los Angeles or by posting for ten days in three public places in the City of Los Angeles: one copy on the bulletin board located at the Main Street entrance to the Los Angeles City Hall; one copy on the bulletin board located at the Main Street entrance to the Los Angeles City Hall East; and one copy on the bulletin board at the Temple Street entrance to the Los Angeles County Hall of Records.

I hereby certify that this ordinance was passed by the Council of the City of Los Angeles, at its meeting of \_\_\_\_\_.

HOLLY L WOLCOTT, City Clerk

By \_\_\_\_\_  
Deputy

Approved \_\_\_\_\_

\_\_\_\_\_  
Mayor

Pursuant to Sec. 559 of the City Charter, **I approve** this ordinance on behalf of the City Planning Commission and recommend that it be adopted.

See attached report

\_\_\_\_\_ (DATE)

Vincent P. Bertoni  
Director of Planning