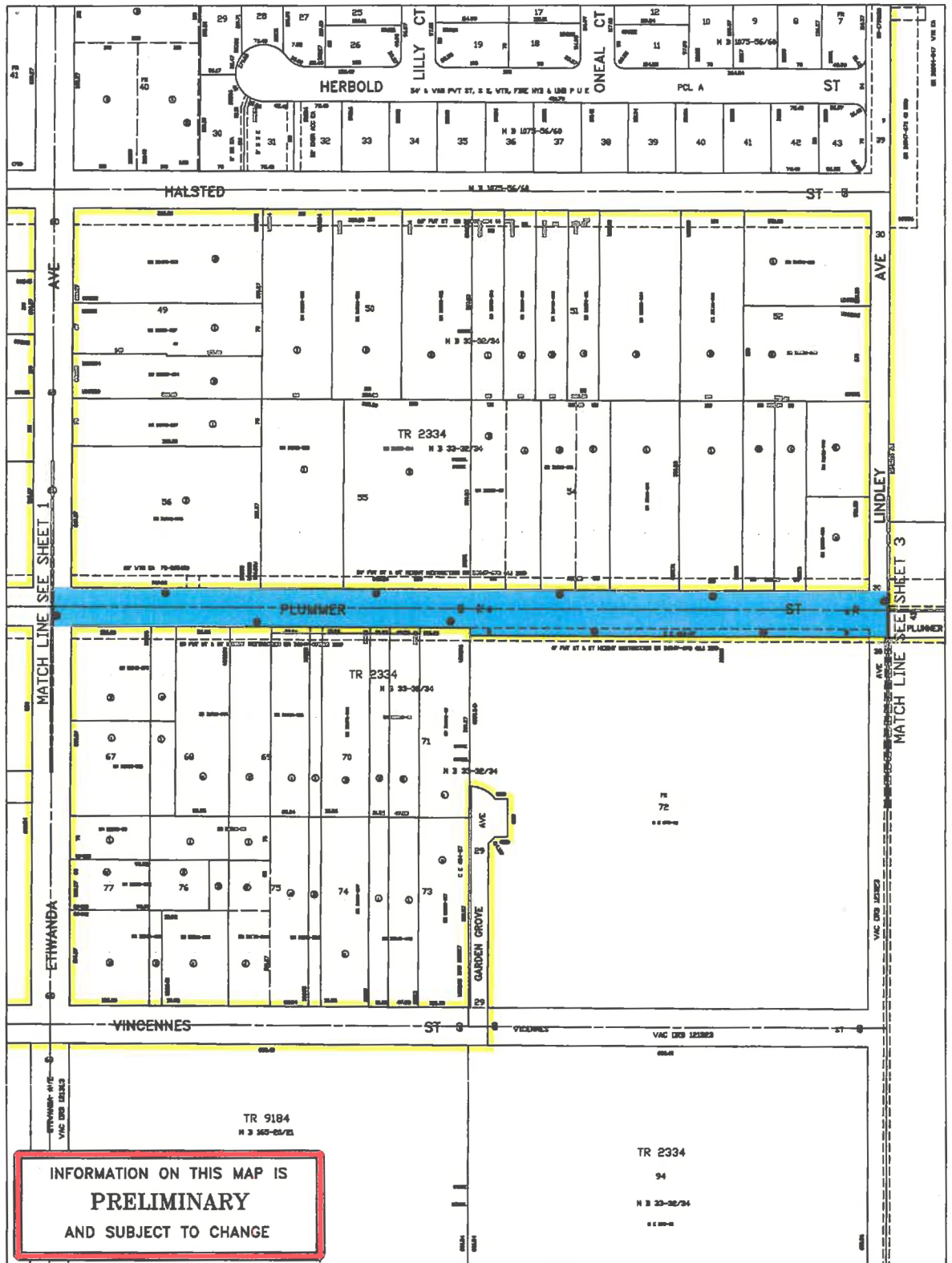


TITLE: PLUMMER STREET BETWEEN DARBY AVENUE AND ZELZAH AVENUE

WORK ORDER NO. VAC- E1401189  
 COUNCIL FILE NO. \_\_\_\_\_  
 COUNCIL DIST. 12 DIV. INDEX 705  
 ENG. DIST. VALLEY T.G. 501-A6  
 DISTRICT MAP 198B125



DEPT. OF PUBLIC WORKS  
 BUREAU OF ENGINEERING  
 CITY OF LOS ANGELES



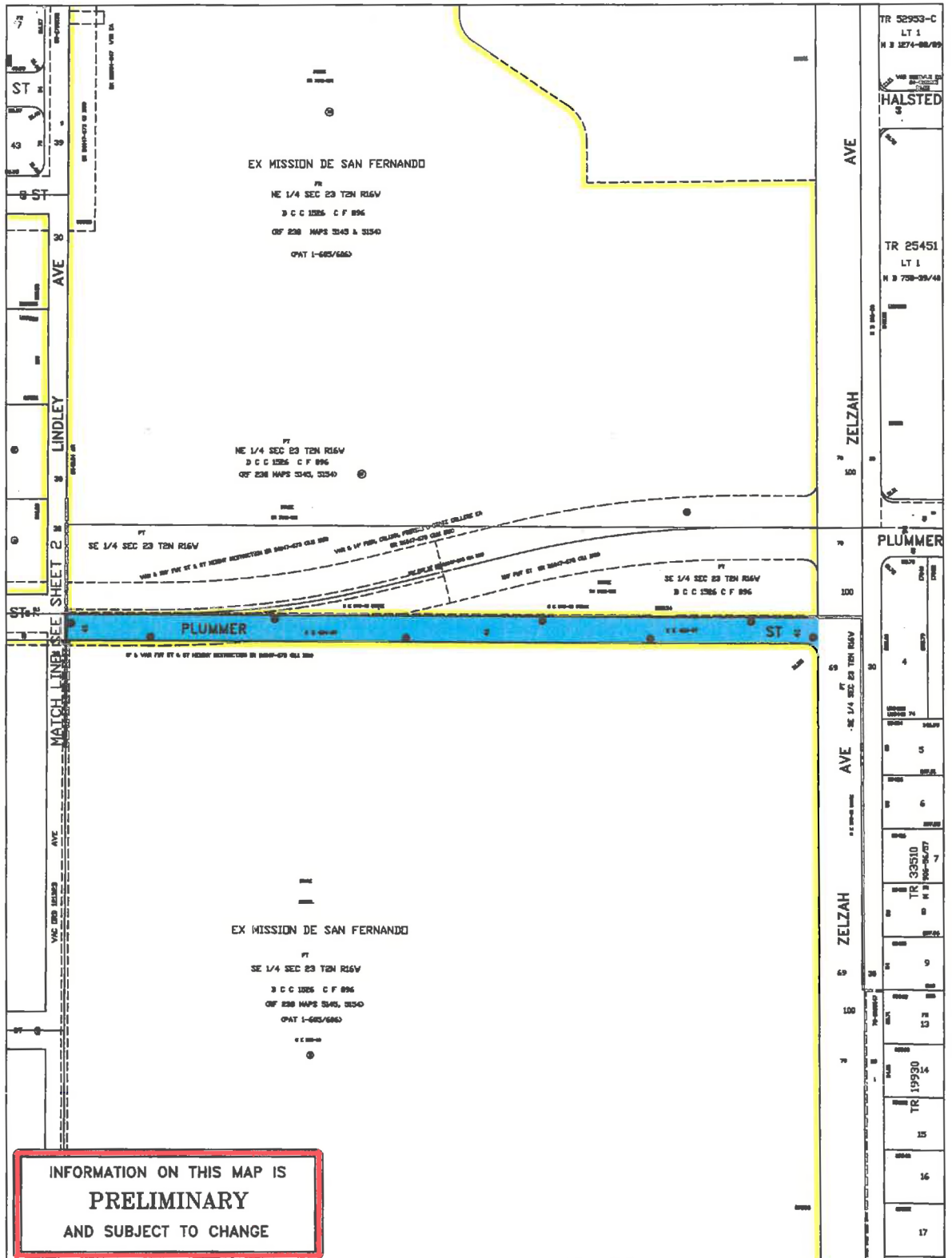
INFORMATION ON THIS MAP IS  
**PRELIMINARY**  
 AND SUBJECT TO CHANGE

**TITLE:** PLUMMER STREET BETWEEN DARBY AVENUE AND ZELZAH AVENUE

WORK ORDER NO. VAC- E1401189  
 COUNCIL FILE NO. \_\_\_\_\_  
 COUNCIL DIST. 12 DIV. INDEX 705  
 ENG. DIST. VALLEY T.G. 501-A6  
 DISTRICT MAP 198B125



**DEPT. OF PUBLIC WORKS**  
**BUREAU OF ENGINEERING**  
**CITY OF LOS ANGELES**



INFORMATION ON THIS MAP IS  
**PRELIMINARY**  
 AND SUBJECT TO CHANGE

**TITLE:** PLUMMER STREET BETWEEN DARBY AVENUE AND ZELZAH AVENUE

WORK ORDER NO. VAC- E1401189  
 COUNCIL FILE NO. \_\_\_\_\_  
 COUNCIL DIST. 12 DIV. INDEX 705  
 ENG. DIST. VALLEY T.G. 501-A6  
 DISTRICT MAP 198B125



**DEPT. OF PUBLIC WORKS**  
  
**BUREAU OF ENGINEERING**  
  
**CITY OF LOS ANGELES**

**EXHIBIT A**

Legend: Vacation boundary as shown  
 SHEET 3 OF 3 SHEETS

