

TR 52953-C	LT 1	H B 1274-98/89
TR 25451	LT 1	H B 758-39/40
TR 33510	LT 4	H B 906-36/37
TR 19930	LT 14	H B 19930
	LT 15	H B 19930
	LT 16	H B 19930
	LT 17	H B 19930

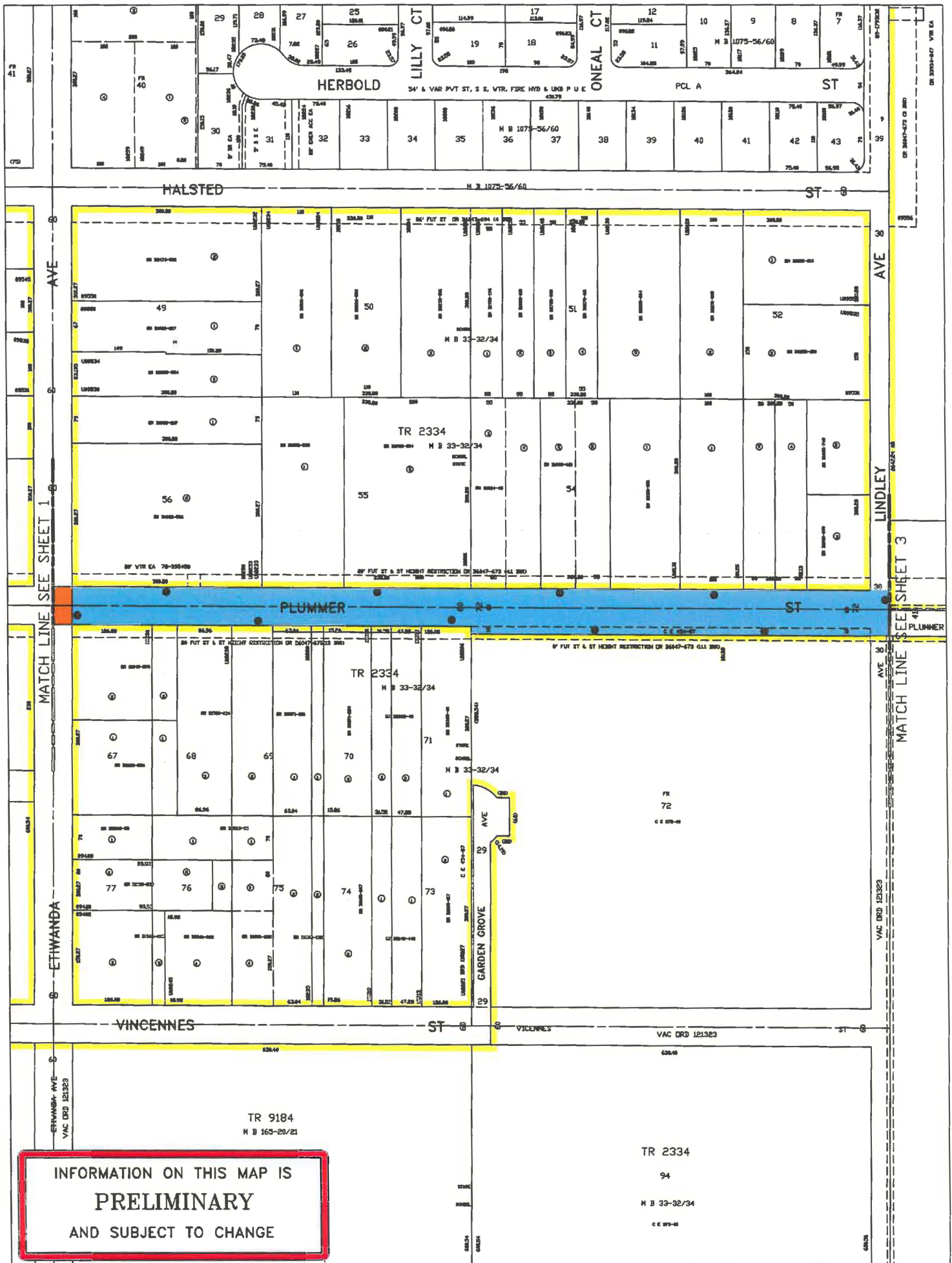
INFORMATION ON THIS MAP IS
PRELIMINARY
 AND SUBJECT TO CHANGE

TITLE: PLUMMER STREET BETWEEN DARBY AVENUE AND ZELZAH AVENUE

WORK ORDER NO. VAC- E1401189
 COUNCIL FILE NO. 17-0381
 COUNCIL DIST. 12 DIV. INDEX 705
 ENG. DIST. VALLEY T.G. 501-A6
 DISTRICT MAP 198B125



DEPT. OF PUBLIC WORKS
BUREAU OF ENGINEERING
CITY OF LOS ANGELES

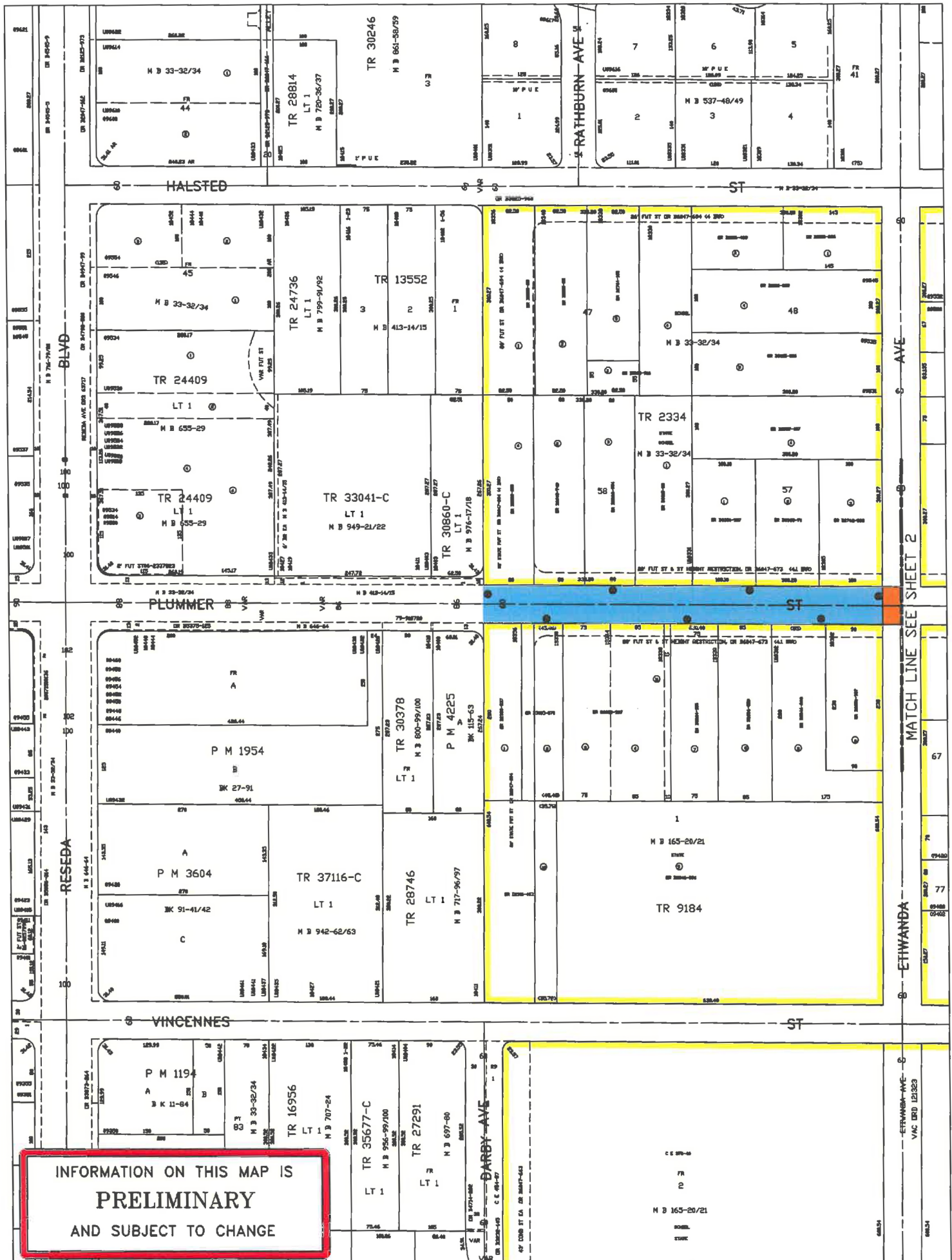


TITLE: PLUMMER STREET BETWEEN DARBY AVENUE AND ZELZAH AVENUE

WORK ORDER NO. VAC- E1401189
 COUNCIL FILE NO. 17-0381
 COUNCIL DIST. 12 DIV. INDEX 705
 ENG. DIST. VALLEY T.G. 501-A6
 DISTRICT MAP 198B125



DEPT. OF PUBLIC WORKS
 BUREAU OF ENGINEERING
 CITY OF LOS ANGELES



TITLE: PLUMMER STREET BETWEEN DARBY AVENUE AND ZELZAH AVENUE

WORK ORDER NO. VAC- E1401189
 COUNCIL FILE NO. 17-0381
 COUNCIL DIST. 12 DIV. INDEX 705
 ENG. DIST. VALLEY T.G. 501-A6
 DISTRICT MAP 198B125



DEPT. OF PUBLIC WORKS
 BUREAU OF ENGINEERING
 CITY OF LOS ANGELES