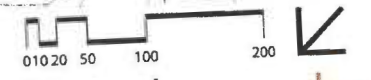


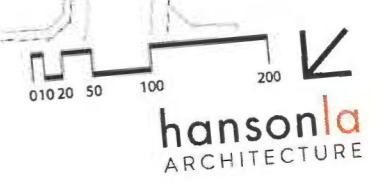
Date: 06/19/2018  
 Submitted in PLUM Committee  
 Council File No: 18-0174 & 18-0174-S1  
 Item No. 14 and 15  
 Deputy: Comm. from Applicant



**hansonla**  
 ARCHITECTURE

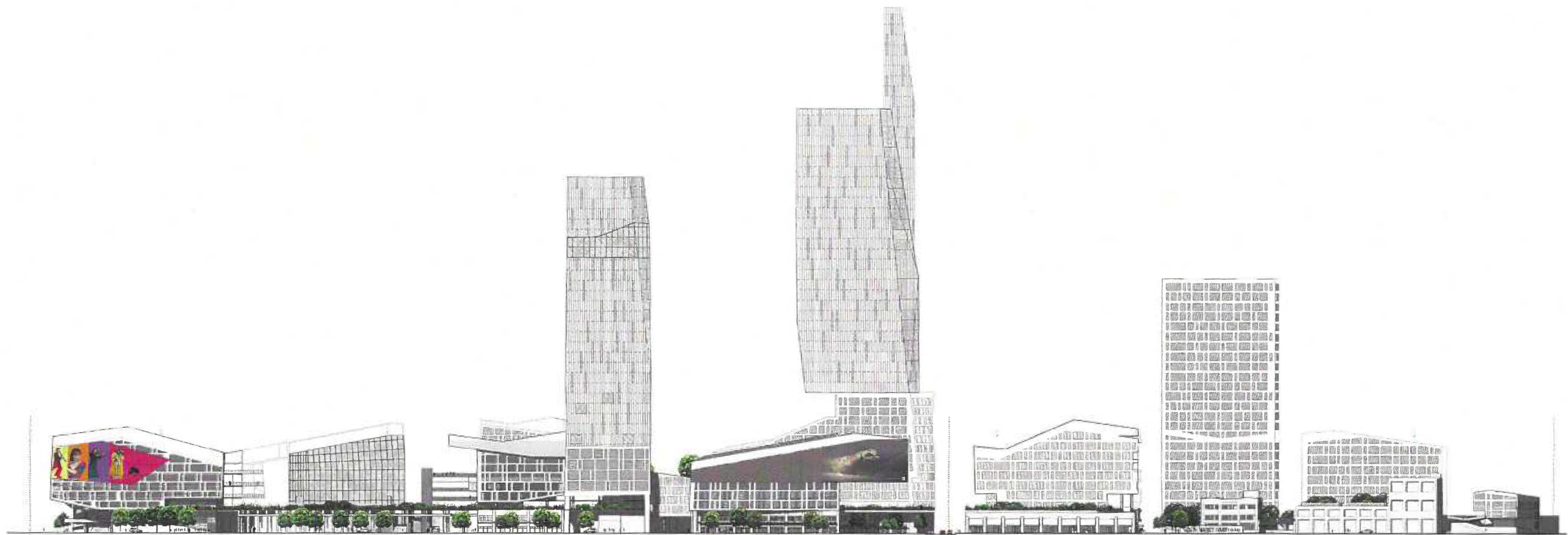
**GROUND PLAN**  
 1 - EDUCATIONAL 2 - AUDITORIUM 3 - RETAIL 4 - RESIDENTIAL LOBBY 5 - GROCERY STORE 6 - HOTEL 7 - RESTAURANT 8 - PARKING STRUCTURE/ FLEX 9 - COMMERCIAL OFFICE





TERRACE PLAN  
 1 - EDUCATIONAL 2 - AUDITORIUM 3 - RETAIL 4 - RESIDENTIAL 5 - AMENITY DECK 6 - POOL DECK 7 - THEATER 8 - COMMERCIAL OFFICE 9 - PARKING STRUCTURE/FLEX



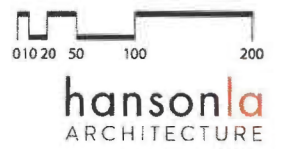


9TH STREET

11TH STREET

12TH STREET

SAN JULIAN STREET ELEVATION





LONGITUDINAL SECTION





THE RUNWAY LOOKING WEST, BLOCK 1





LOOKING SOUTHEAST FROM SAN JULIAN STREET AND 9TH STREET





SAN JULIAN STREET LOOKING NORTH