

TRANSMITTAL

TO Council	DATE 04-02-19	COUNCIL FILE NO.
FROM Proposition K – L.A. For Kids Steering Committee	COUNCIL DISTRICT Various	

At its meeting on March 28, 2019, the L.A. for Kids Steering Committee (LAFKSC) adopted the recommendations of the attached Department of Recreation and Parks (RAP) report, which subject to Council action would authorize RAP's proposed Measure A - Park Improvement Plan (PIP).

In 2016, Los Angeles County voters approved Measure A, which will provide the City in perpetuity formula-based allocations and with additional competitive grant opportunities. On June 22, 2018, a Motion was introduced to evaluate and seek guidance from the CAO, Chief Legislative Officer, RAP, City Attorney, and the Controller on roles and responsibilities related to the governance, financing, and administration of the new Measure A program (C.F. 18-0611). In October 2018, City Council provided RAP with instructions on the administration and roles associated with the various City departments involved regarding Measure A.

The attached PIP is a three-year planning tool that includes the proposed 2018-19 annual budget for Measure A. The PIP will allow RAP to effectively manage Measure A Program funds. The approval of the PIP is necessary to identify the specific parks intended for development so that RAP can initiate community engagement activities required by the grant.

There is no immediate impact on the General Fund and any incremental increases for operation and maintenance costs will be addressed through future City budgets following completion of the respective projects.



Richard H. Llewellyn, Jr.
City Administrative Officer
Chair, L.A. For Kids Steering Committee

FORM GEN. 160

CITY OF LOS ANGELES
INTER-DEPARTMENTAL CORRESPONDENCE

L.A. FOR KIDS STEERING COMMITTEE MEETING, MARCH 28, 2019
AGENDA ITEM 10
DEPARTMENT OF RECREATION AND PARKS MEASURE A PROPOSED PARK
IMPROVEMENT PLAN WITH BUDGET AND STATUS REPORT

DATE: March 28, 2019

TO: L.A. for Kids Steering Committee

FROM: Michael A. Shull, General Manager
Department of Recreation and Parks



SUBJECT: DEPARTMENT OF RECREATION AND PARKS MEASURE A
PROPOSED PARK IMPROVEMENT PLAN WITH BUDGET AND
STATUS REPORT

RECOMMENDATIONS

The Department of Recreation and Parks requests that the L.A. for Kids Steering Committee:

1. Receive the Department of Recreation and Parks ("RAP") proposed Measure A Park Improvement Plan, which includes the budget for FY2018-19 Measure A funding allocations, and funding estimates for FY2019-20 and FY2020-21
2. Recommend that the City Council approve the Measure A Proposed Park Improvement Plan

SUMMARY

This report is on the Proposed Park Improvement Plan ("PIP") to allocate Measure A funds to 43 study areas and provide up-to-date information to the L.A. for Kids Steering Committee and the City Council.

In 2016, Los Angeles County voters approved Measure A, which will provide the City (in perpetuity) formula-based annual allocations, with additional competitive grant opportunities. Measure A renews the County's commitment to provide ongoing investments in the acquisition and development of parks and recreational facilities, the preservation of open space, beaches and watershed quality, along with funding dedicated to programming, related maintenance and job training elements. Monies available through the Measure A grant program will be generated in perpetuity through the collection of a parcel tax, for total annual funding of an estimated \$96.8 million across the county (Attachment No. 1).

In October 2018, the City Council, based on recommendations provided by the CAO, provided the Department of Recreation and Parks with instructions on how Measure A would be administered and roles associated with the various City departments involved. Also in October 2018, the Los Angeles County Regional Parks and Open Space District (RPOSD) notified all 88 cities that the actual allocations for FY2018-19 had been calculated, which was approximately 4.7% less than originally projected. This reduction was based on actual versus planned tax receipts.

On March 5, the Los Angeles County Board of Supervisors (LACBOS) acted to adopt the Measure A guidelines, with an amendment that guarantees at least 30% of the Measure A funding to be allocated to those parts of the County that are identified as High and/or Very High Park Need (HVHPNA) Areas. An estimated 50-60% of the County HVHPNAs are located within the boundary of the City of Los Angeles. With the LACBOS approving the Measure A guidelines, RPOSD is moving forward with rolling out the program. To date, the Department has enrolled in the Measure A on-line grants management system, is in the process of verifying its electronic fund transfer information, and is working with the City Attorney's Office to complete an ordinance to establish 10 special funds to properly manage and account for Measure A funds the City receives.

DISCUSSION

Proposition A Accomplishments

Measure A replaces the Proposition A-I (1992) and Proposition A-II (1996) grant programs. The City of Los Angeles has benefited from those programs for the past 26 years. Since the passing of the Los Angeles County (County) Safe Neighborhood Parks, Gang Prevention, Tree Planting, Senior and Youth Recreation, Beaches and Wildlife Protection Act of 1992 (Proposition A-I) and the Los Angeles County Park, Beach and Recreation Act of 1996 (Proposition A-II), the City of Los Angeles Department of Recreation and Parks (RAP) has been awarded specified, discretionary, and competitive 1992 and 1996 grant funds in excess of \$130 million for various capital improvement projects, including the acquisition and development of parks and recreation facilities.

To date, the 1992 and 1996 awards funded 161 projects throughout the City of Los Angeles. Of the 161 projects, 154 projects have been completed and closed with the County, 3 projects are in the process of being closed out with the County, and 4 projects remain active with the another yet to be awarded 4 projects in process of being approved by the County covered through residual funds from other Prop A projects. The active projects are estimated to be completed by the funding deadline of June 30, 2020 for Proposition A-II allocated projects. Proposition A-I allocated projects were completed and closed as of the funding deadline of June 30, 2015.

Measure A Benefits Moving Forward

Moving forward, monies available through the Measure A grant program will be generated in perpetuity through the collection of a parcel tax, for total annual funding of an estimated \$96.8 million, County-wide. This translates to the City of Los Angeles receiving \$18.4 towards park projects and an additional \$3.0-3.1 million towards maintenance and servicing of past projects covering FY2018-19. Slight variations in future actual amounts received may occur due to differences in planned versus actual tax receipts by the Los Angeles County Assessor's Office.

Measure A is allocated across 43 study areas, (Attachment No. 2), some of which are designated by the County as high and very-high park need areas. Each of the 43 study areas receives a base allocation of funding under Category 1 - Community-Based Park Investment Program ranging from \$91,395 to \$484,481 for a total of \$12,205,499.85 (FY2018-19), and 28 study areas receive additional funding under Category 2 - Neighborhood Parks, Healthy Communities, & Urban Greening ranging from \$71,555 to \$362,991, for a total of \$6,229,228.22 (FY2018-19). This represents an overall allocation to the City of Los Angeles totaling \$18,434,728.08 (FY2018-19). The allocations to each study area for FY2018-19 are set forth in Attachment No. 3. The allocations for FY2019-20 are expected to mirror the FY2018-19 allocation levels, with slight variation as previously noted.

Implementing Measure A: Council Actions, Roles and Responsibilities

As the continuation program to the County's Proposition A program, that is administered by the L.A. for Kids Steering Committee, the Office of the City Administrative Officer (CAO) recommended continuing this same governance structure to facilitate broad coordination among all the implementing departments, leveraging of resources across the City and provide representation of both City Council's and Mayor's priorities.

On June 22, 2018, Councilmember O'Farrell introduced a motion, which was amended and approved by the Arts Entertainment Parks and River (AEPR) Committee on August 8, 2018, to evaluate and seek guidance from the CAO, Chief Legislative Officer, RAP, City Attorney, and Controller on roles and responsibilities related to the governance, financing, and administration of the new Measure A program (Council File No. 18-0611).

On August 17, 2018, the CAO introduced its first report on Measure A to the AEPR Committee, which provided an overview of the Measure A Program and recommended that:

1. The L.A. for Kids Steering Committee (LAFKSC) be designated as the governance body for Measure A, with RAP serving as the grant administrator;
2. Authorize the Controller to establish new special funds within Department 88 (RAP) to receive and disburse Measure A program funds, for cash flow, or for reimbursement of program expenses;
3. Request the City Attorney with the assistance from the CAO, CLA, RAP, and the Controller to finalize an ordinance to implement the adopted recommendations;
4. Instruct the CAO and RAP to provide a subsequent report(s) on the proposed annual budgeting and reprogramming process for the Measure A program, any proposed staffing requirements to support program activities, and to address questions raised relative to the cost effectiveness of utilizing joint use agreements between the City and the Los Angeles Unified School District ("LAUSD"); and,
5. Authorize the CAO and City Attorney to make technical changes, including adjustments as needed to implement Mayor and Council intentions.

On August 21, 2018, Council approved the above recommendations.

On October 11, 2018, the CAO provided its second report to the AEPR Committee, with

recommendation that RAP assume key responsibilities. The responsibilities include:

- Prepare an annual expenditure plan and provide quarterly updates to the LAFKSC;
- Processing all accounting documents, subject to Council approval;
- Work with each respective Council Office and local communities to develop projects to incorporate into the annual expenditure plan;
- Provide quarterly status updates on all active Measure A projects to include at a minimum, planned or actual start dates, phase of development, estimated completion date, and incurred project expenditures;
- Coordinate with the Controller's Office to process all accounting transactions, including review of payment requests and processing of invoices for Measure A;
- Partner with BOE, to the extent to which there are projects that involve BOE, to deliver all planning, design, construction and project management of Measure A funded projects, with use of consultant support on an as-needed basis.

On October 24, 2018, AEPR approved forwarding the CAO's recommendations to full Council. The AEPR report recommended designating the L.A. for Kids Steering Committee (LAFKSC) as the governance body of the Measure A program, with RAP serving as the grant administrator pursuant to the recommendation made on August 17, 2018 by the City Administrative Officer (CAO) (C.F.18-0611). The roles defined by the City Council are as follows:

- L.A. for Kids Steering Committee — serves as the administering entity of the Measure A program, submission of annual budget for Council and Mayor's approval, development of financing options, and general oversight over authorized projects with respect to cost control and the timely delivery of projects.
- Board of Recreation and Parks Commissioners — approves all acquisition of real property as dedicated parkland, the bid and award of construction contracts, settlement of disputes and final acceptance of completed projects.
- RAP — serves as the grant administrator of the program, develops the 3-year plan updated annually, administers community engagement, serves as funds administrator, responsible for final invoice approval, submits grant applications and accepts awarded funds, processes all accounting transactions including final invoices, maintains and operates completed projects, and reports to the Steering Committee on matters falling under its purview, submits an annual expenditure plan and provides quarterly status updates for the Measure A grant program to the LAFKSC. Recreation and Parks is also responsible for processing all accounting transactions funded by the Measure A grant program.
- CAO Staff — facilitates regular program management meetings to monitor the status of projects and develops options to address project development barriers, including funding shortfalls or cash flow requirements.

In addition to the approved recommendations, RAP was specifically instructed to report back on the following elements related to Measure A:

- Develop a Community Outreach Plan and strategies from beginning to end of proposed projects;
- Measure A Assessment Districts and methods by which projects can be maximized per Council District; and
- Schedule and timeline for Council approval

On October 31, 2018, the City Council, and subsequently the Mayor, approved the recommendations presented to them by the CAO with input from RAP and other City departments, (C.F. 18-0611). Council File 18-0611 is included herein as see Attachment No. 4.

RAP staff understood the actions of the City Council appoint the LAFKSC as the authority to make adjustments to the plans presented to the LAFKSC. However, this action is not explicitly clear in the records. RAP seeks clarification from LAFKSC and City Council if this was the intent of Council, and if LAFKSC has such authority.

Actions Taken in Response to Council Instructions

There is still a lot that remains to be completed, and the complexities of Measure A means RAP is developing new processes to address the nuances of the Measure A program. As of this report, RAP has taken several actions in response to Council instructions. RAP has, or is in process of:

- Validated its registration information with RPOSD and other L.A. County offices;
- Enrolled in the RPOSD on-line grants management system;
- Received updates on the implementation of the Measure A program;
- Reviewed open and recently closed Proposition A projects with RPOSD to ensure the City remains in good standing;
- Held a Parks Partnership meeting with many of RAPs non-profit park partners to discuss ways the organizations might be able to collaborate on future projects;
- Obtained authority for six (6) new positions to assist RAP with the community engagement activities associated with Measure A (C.F. 18-1167);
- Continue to work with the Office of the City Attorney to define and finalize the Special Funds required to craft a new ordinance to establish the trust funds to recover Measure A monies; and
- Developed a three-year Park Improvement Plan

Measure A Park Improvement Plan

The Measure A Park Improvement Plan (PIP), for the Measure A annual allocations, is a three (3) year planning tool and serves multiple purposes, see Attachment No. 5. The PIP will allow RAP to better manage Measure A Program funds to ensure park projects are fully funded. In some cases, funding under the annual allocations of Measure A are insufficient to complete a

project in a single year. In these cases, RAP will roll up year-over-year funding to ensure park projects are completed and benefit the community. The PIP will also be used to identify projects where Measure A funds might be leveraged towards Measure A "Competitive" grants and other grant programs.

The PIP will also provide RAP the ability to forecast Measure A projects planning and budgeting over time. The PIP includes the annual budget that will provide information on the parks and current year Measure A annual allocations. The parks are identified annually through a process of reviewing the Department's park needs and amenities assessment and working with Council Offices to identify parks in the greatest need or that will provide increased benefit to the community. Additionally, the PIP is a tool to address the needs of each park focusing on projects that improve park amenities and facilities, increase participation in programmed sports activities, and increase visitation to parks. RAP recommends LAFKSC and, if required, the City Council approve the PIP. The approval of the PIP is necessary to identify the specific parks where community engagement is required.

Community Outreach Plan

In regards to community engagement, RAP requested and has filled three (3) new position authorities at the Sr. Project Coordinator level and is coordinating the next steps to fill three (3) Project Coordinator positions. These six (6) new positions, in conjunction with staff from the Grants Administration Group and RAP Planning Section, will begin scheduling and conducting community outreach efforts as required by Measure A over the next 12 months and beyond. These efforts will present project ideas and preliminary design concepts to the communities to obtain feedback and incorporate community ideas into the overall projects. Community engagement will cover each and all of the 43 study areas.

Measure A allows the City to utilize Community Based Organizations (CBOs) established by the County Regional Parks and Open Space District (RPOSD) to coordinate engagement sessions, provide language interpretation, and be used as a resource to promote the community meetings and increase turn-out. RAP staff is working to ensure community engagement is dynamic and meaningful. To this end, RAP is working to evaluate and implement best practices and new tools for involving the community in greater capacity on projects, and obtaining feedback. The use of Community Based Organizations may be necessary in some instances, especially in cases where RAP requires assistance to involve communities that are linguistically isolated.

Maximizing Projects per Council District

RAP staff have reviewed and evaluated all the parks in each Council District to ensure Measure A annual allocation funding is focused on those parks with the greatest need and where projects will increase recreational programming and park utilization. To align near equal funding between the study areas and the Council Districts has proven to be of significant challenge. The 43 study areas created by the County are not often contained within a single Council District. In many cases, the Study areas cross two to four Council District boundaries. Compounding this further, parks are not equally distributed within the sections of Council Districts within a given study area. A breakdown of the distribution of Measure A funds by Council District is included on Page 3 of Attachment No. 5.

Some parks may have received recent improvements under other grant programs (e.g. Proposition A, Proposition K, CDBG, Prop 40, or other.) and presently have a lower level of need

for new amenities or development. Additionally, the County requires study area funds to remain within each specific study area. The exception to this requirement is for joint funded project located in two or more contiguous study areas. In park poor and High and/or Very High Park Need Areas, RAP staff is focusing its efforts to acquire properties and work with a host of park partners to develop new parks. Measure A contains an annual allocation of \$2.7 million county-wide for cities to acquire properties as new dedicated park space. As new park space is created, these parks will be eligible for future Measure A funding.

For projects in each of the 43 study areas, RAP continues to work closely with Council Offices to discuss park needs and community requests, and to focus on projects that build recreational capacity and increase participation in recreational programming at parks. The focus areas include playgrounds, sports field lighting, restrooms, athletic fields and courts, HVAC, accessibility and ADA compliant access routes and facilities.

Measure A Annual Allocations (Categories 1 & 2) will focus on park needs, while Measure A competitive grants will focus on larger projects that include new park acquisitions, new or renovated recreation centers, pools, etc.

LA County Measure A Proposed Guidelines Approved

On March 5, 2019, the Los Angeles County Board of Supervisors passed the Measure A Program Guidelines, with amendment. The amendment passed by the Board of Supervisors covered four (4) items:

1. Establishes Los Angeles County Department of Parks and Recreation as lead agency in the oversight, management, and updates of the Los Angeles Countywide Comprehensive Parks and Recreation Needs Assessment;
2. Merges the Countywide Park Needs Assessment with the Regional Recreation, Beaches, Rural Areas and Open Space (RRBRAOS) Assessment in FY2025 to create a unified Los Angeles Countywide Comprehensive Parks and Recreation Needs Assessment;
3. Amends the Targeting Funds section (1.8) [of the guidelines] to ensure that the funds designated for High and/or Very High Need Study Areas projects are designated for projects that are strictly located in High and/or Very High Need Study Areas and specified as a minimum or floor of 30 percent. Furthermore, delete all references that "decrease: the minimum of 30 percent."; and,
4. RPOSD to report back to the Board on a quarterly basis on their outreach and technical assistance efforts.

From the list of items above, Item No. 3 may have a positive impact on the City of Los Angeles in that this direction provides an absolute minimum of 30 percent going towards High and/or Very High Needs Areas. Of the High and/or Very High Park Needs Areas within Los Angeles County, an estimated 50-60 percent are in the boundaries of the City of Los Angeles. This means that the competitive grant applications in these areas will have a higher likelihood of consideration and award, and may result in more immediate development in the City.

In recent conversations with RPOSD, RAP understands that the program is expected to go live in the March-April 2019 time frame. RAP staff have completed registration in the new RPOSD

web-based/on-line grants management system. Over the next 12 months, RAP staff expects to enter an estimated 80-90 project applications covering the Measure A Annual Allocations for FY2018-19 and FY2019-20. FY2019-20 allocations are expected to be released in the September-October 2019 time frame.

Additional Staffing

On October 24, 2018, the Arts, Entertainment, Parks and River Committee made recommendations in its report to the City Council, included in Attachment No. 4, to designate LAFKSC as the administering entity for the new Measure A program, authorize the Controller to establish new special funds within Department 88 to receive and disburse Measure A program funds, request the City Attorney with the assistance of CAO, CLA, RAP and Controller to finalize an ordinance to implement the adopted recommendations, instruct RAP to submit an annual expenditure plan and quarterly status updates for the Measure A grant program to the LAFKSC, and, instruct RAP with the assistance of the CAO to report to LAFKSC on the following issues:

- Identify any proposed staffing needs to support program activities; and,
- Analyze the cost effectiveness of utilizing joint use agreements between the City and the Los Angeles Unified School District (LAUSD) to address recreational needs in underserved or high-density areas, and confirm whether Measure A program funds may be used to support the associated program costs.

The proposed staffing needs have been partially identified and approved by the Board and City Council in a request for new positions in the classifications of Senior Project Coordinator, three positions, and Project Coordinator, three positions, C.F. 18-1167, see Attachment No. 6. Additional staffing may be required as RAP begins to conduct the community engagement sessions to ensure RAP is able to adequately staff the requisite number of community engagement sessions, planning, and/or other administrative or support positions.

Joint Use Opportunities

On funding joint-use program costs through Measure A, RAP staff has explored several alternatives with RPOSD on this issue, both real-world and hypothetical. In each case, RPOSD has indicated that regardless if RAP, the LAUSD, or a third party (e.g. authorized CBO) is the applicant/recipient of Measure A funds, these funds may not be used to cover program costs; the funds are limited to improvements only. Measure A does allow for improvements to LAUSD properties designated as joint-use, as long as those properties are open to the general public during non-school hours, typically on weekdays in the late afternoon-early evening hours and weekends. RPOSD, however, has not closed the door on the matter completely. They have indicated that they remain open to exploring future ideas on the topic. However, of the examples considered to date, none would qualify.

LAUSD Greening Program

On a related note to Measure A Joint Use Opportunities, which allows Park Agencies to partner with local School Boards to develop school grounds into community recreation spaces, in January 2019, the City joined with the LAUSD and United Teachers Los Angeles (UTLA) to support a school campus greening program. The Memorandum of Understanding between UTLA and LAUSD calls for a joint Green Space Task Force between LAUSD, UTLA and the City to be created and be charged with presenting a plan to increase green space including removing

bungalows, removing asphalt, creating greener play areas, water retention systems, and Community School Parks by December 2019, see Attachment No. 7.

The Green Space Task Force will study green space opportunities in order of priority as follows:

- a. Schools without any existing green space and not located near parks
- b. Schools without any existing green space
- c. Schools with small amounts of green space and communities with limited to no access to parks and recreation

RAP believes this agreement may provide opportunities that will significantly improve the overall well-being and health of congested communities where vacant land and other properties are extremely limited and locating space for a new park almost non-existent. School children will finally have space to enjoy recreation activities and explore a small part of nature. As a benefit to communities, older residents and younger families around the new school green spaces will benefit, being able to use the space during after-school hours, on weekends, and holidays to exercise and play.

Timeline for Measure A Roll-Out

Measure A Competitive grant programs will likely be available in CY2019. While the exact dates remain to be determined, RAP staff are preparing park project ideas, focusing predominately on, but not exclusively, High and/or Very High Park Need Areas of the City. There are some study areas that receive funding that are not in High and/or Very High Park Need Areas, but may have High and/or Very High Park Need Sub-areas. Additionally, LA County continues to provide RAP and other park agencies with periodic updates about a Measure A litigation matter, and ask if RAP will spend any Measure A funds prior to resolution of the litigation. RAP has indicated that the City will continue to plan Measure A projects, however, will not expend any funds prior to resolution of the litigation case.

The full spectrum of Measure A grant programs and frequency of availability are outlined in Attachment No. 8. The annual allocations (non-competitive) and maintenance and servicing funds are expected to be available from the County April-June 2019, with the initial "competitive" grant opportunities available later in CY2019. Any changes to this schedule will be reported in future quarterly reports to the Board and LAFKSC.

RAP Park Proud LA Strategic Plan 2018-2022

Measure A provides capital development funding towards projects that will improve parks throughout the City. This includes critical development and updates to aging play equipment, increases sports field lighting, updates restrooms, improves facilities and paths of travel to meet ADA requirements, updates or adds heating, ventilation, and air conditioning (HVAC) to recreation centers, and more.

Measure A and other grant programs for improvements will increase visitation to local parks and lead to greater participation in programmatic activities and involvement by children, young adults and the elderly. In focusing on these areas, RAP will also provide expanded use in evening hours, providing communities with safe and healthy alternatives to children and families throughout Los

Angeles, providing cooling centers and warming centers during periods of severe weather and/or extreme heat. Communities will be involved, informed, and invited to provide input that addresses community and cultural issues which vary from park to park. Measure A funding will result in improvements across the spectrum, addressing the needs of the communities which include the effects of climate change and implementing newer technologies that will help save energy and reduce the City's carbon foot print.

Measure A funding, which continues into perpetuity will assist the RAP in achieving the following strategic initiatives outlined in the RAP 2018-2022 Strategic Plan.

- Goal No. 1 - Provide Safe and Accessible Parks, Outcomes 1B, 2C, 2D
- Goal No. 2 - Offer Affordable and Equitable Recreation Programming, Outcome 3A
- Goal No. 3 - Create and Maintain World Class Parks and Facilities, Outcomes 2A, 4C
- Goal No. 4 - Actively Engage Communities, Outcomes 1A, 2A, 2B, 3A, 4A, 4B
- Goal No. 5 - Ensure an Environmentally Sustainable Park System, Outcomes 1B

FISCAL IMPACT

The City will receive funds through Measure A in three general areas,

1. Annual allocations estimated between \$18.4 to 19.3 million in Measure A grant funds from the County based on a per capita formula;
2. Maintenance and Servicing Funds, an estimated \$3.0-3.1 million, to reimburse the City for the additional expenses and maintenance of past Proposition A and future Measure A projects; and,
3. Periodic Measure A funding through competitive award cycles.

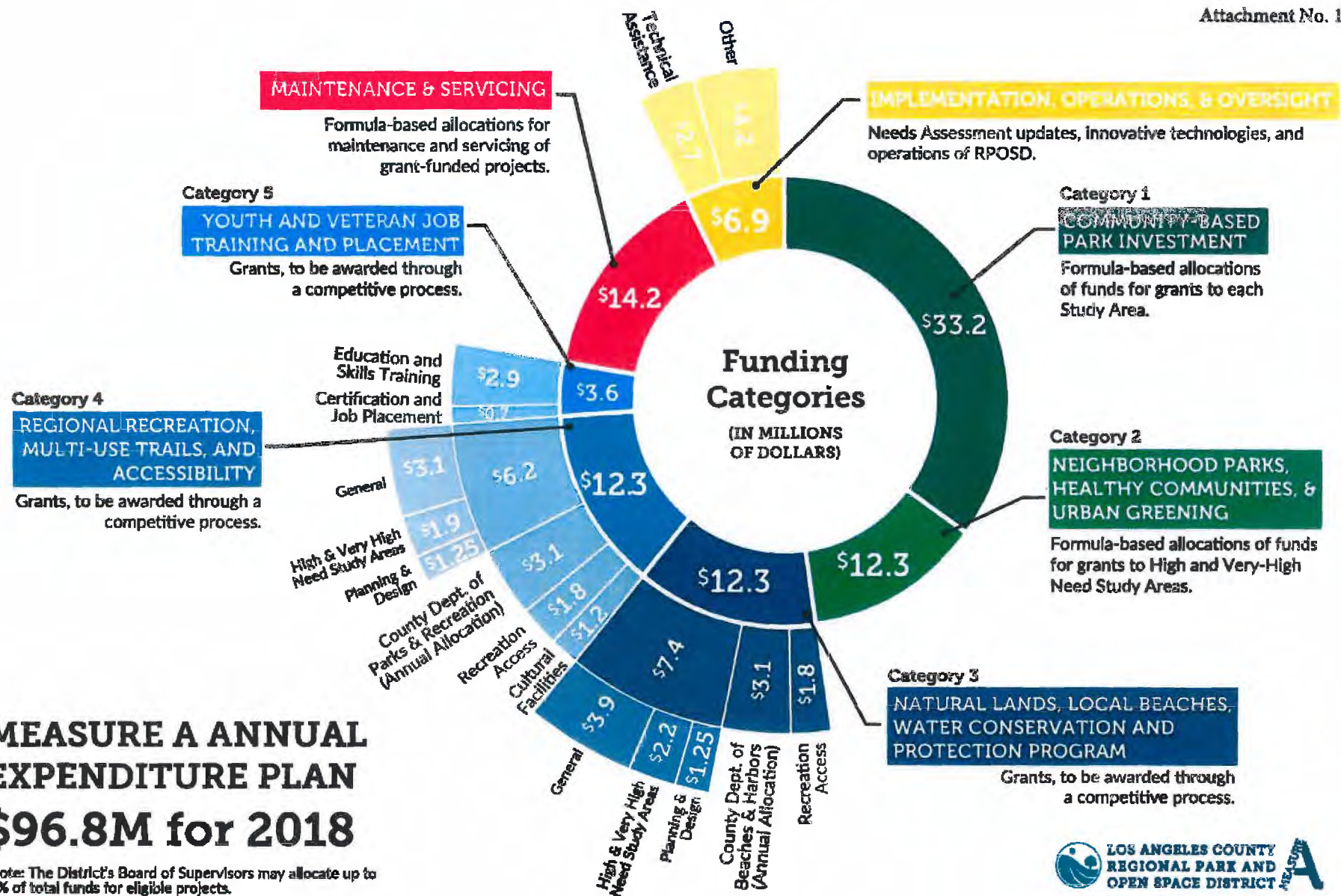
RAP in most cases will need to carry the expenses on its books until the project is completed. Measure A does allow for cash-flow towards projects up to 50 percent. The Maintenance and Servicing funds are used to reimburse RAP for portions of the actual increases in operational and maintenance (O&M) expenses. New developments and improvements will create future O&M costs to RAP that will partially be offset by Measure A Maintenance and Servicing funds available. Any direct impact on the General Fund would be addressed through the City's annual budget process following acquisition and/or the completion of the respective projects.

The City Council also directed the City Attorney to work with the Controller and RAP, and report back to the Council with an Ordinance to establish Special Funds needed to manage the Measure A program, C.F. 18-0611. RAP is in the process of working with the City Attorney finalize the descriptions and requirements needed for each of the Special Funds to be created. The Special Funds will facilitate the transfer of funds from County to the City, and provide a means of tracking all expenditures associated with each of the Measure A fund elements.

This report was prepared by Bill Jones, Chief Management Analyst, Grants Administration Section, Finance Division.

Attachments:

- 1. RPOSD Measure A Annual Expenditure Plan \$96.8M for 2018**
- 2. City of Los Angeles Recreation And Parks Council Districts & Measure A Study Areas**
- 3. Measure A – City of Los Angeles, Programmed Allocations by Study Area – Actual for FY2018-19**
- 4. Council File 18-0611, Measure A Implementation / Project and Fund Management Framework**
- 5. RAP Proposed Park Improvement Plan and Budget for FY2018-19 to FY2020-21**
- 6. Council File 18-1167, Measure A Community Engagement Staffing Request**
- 7. LAUSD-UTLA Memorandum of Understanding, Pilot Program – Green Space**
- 8. RPOSD Measure A Program Allocation Calendars**



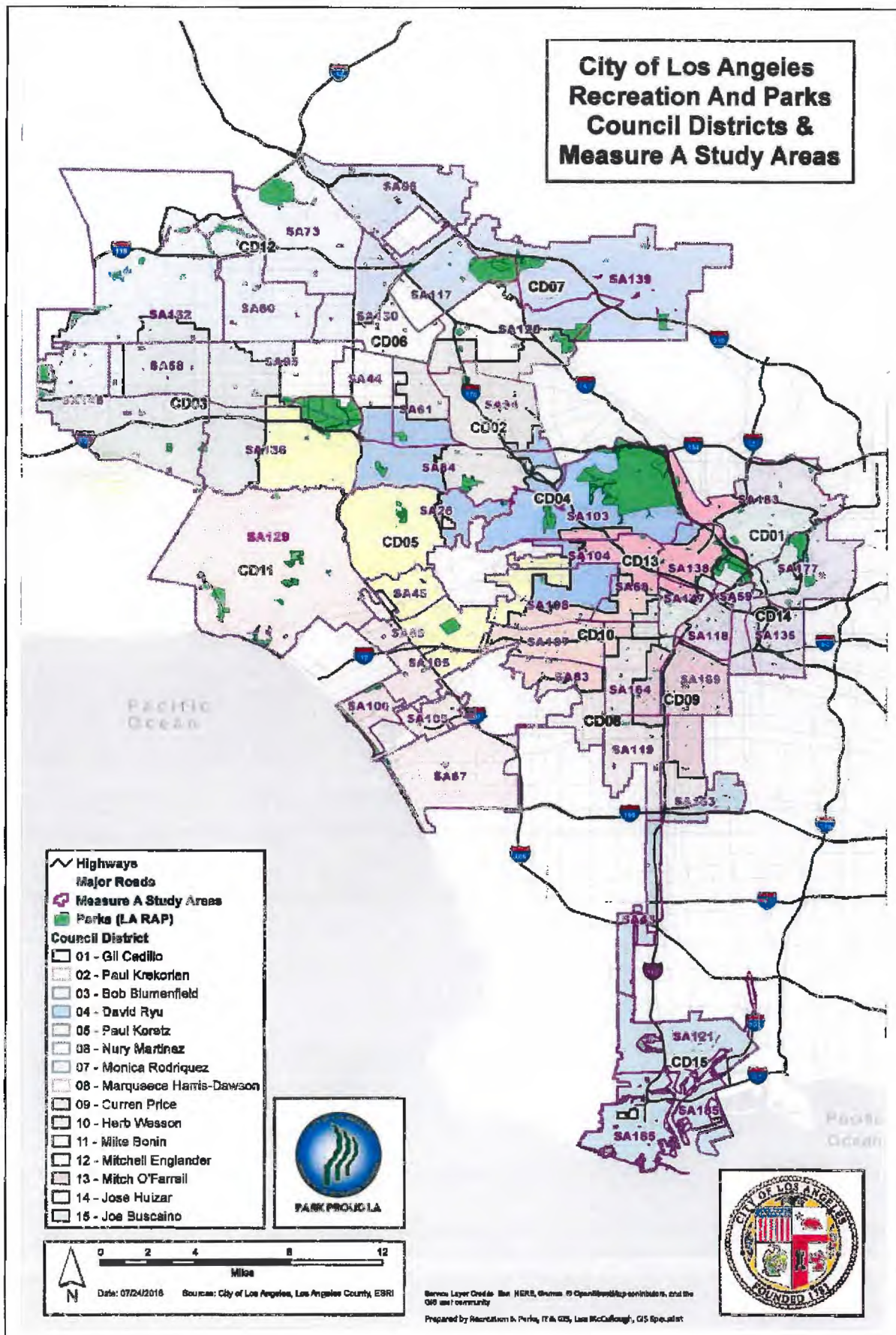
MEASURE A ANNUAL EXPENDITURE PLAN \$96.8M for 2018

Note: The District's Board of Supervisors may allocate up to 2% of total funds for eligible projects.

\$1.936 M (\$387,200/ Sup District)



RPOSD.LAcounty.gov | osdinfo@parks.lacounty.gov | 626.588.5060



MEASURE A - CITY OF LOS ANGELES

Attachment No. 3

PROGRAMMED ALLOCATIONS BY STUDY AREA (ACTUAL AMOUNTS FOR FY2018-19)

ID	Study Area Name	Council District(s)	Category 1 * Allocation (2018-19 Actual)	Category 2 * Allocation (2018-19 Actual)	Category 1 & 2 * Allocation (2018-19 Actual)
117	Arleta - Pacoima	6, 7	\$ 279,834.08	\$ 206,836.02	\$ 486,670.10
83	Baldwin Hills - Leimert - Hyde Park	8, 10	\$ 246,679.02	\$ 186,217.95	\$ 432,896.97
26	Bel Air - Beverly Crest/ UI Hollywood Hills	4, 5	\$ 97,538.11	\$ -	\$ 97,538.11
135	Boyle Heights	14	\$ 245,715.06	\$ 183,874.19	\$ 429,589.25
129	Brentwood - Pacific Palisades	11	\$ 236,571.64	\$ -	\$ 236,571.64
58	Canoga Park - Winnetka	3, 12	\$ 269,040.58	\$ 202,415.24	\$ 471,455.82
118	Central City	1, 9, 14	\$ 261,749.56	\$ 213,468.58	\$ 475,218.14
59	Central City North	1, 14	\$ 91,395.41	\$ 71,554.54	\$ 162,949.95
152	Chatsworth - Porter Ranch / UI Chatsworth	3, 12	\$ 370,839.01	\$ -	\$ 370,839.01
136	Encino - Tarzana	3, 5, 6	\$ 273,866.87	\$ -	\$ 273,866.87
164	Exposition Park - University Park - Vermont Square	1, 8, 9, 10	\$ 469,091.50	\$ 348,350.12	\$ 817,441.62
73	Granada Hills - Knollwood	12	\$ 194,299.83	\$ -	\$ 194,299.83
43	Harbor Gateway	15	\$ 141,223.25	\$ 107,997.13	\$ 249,220.38
103	Hollywood - North	4, 13	\$ 344,301.63	\$ -	\$ 344,301.63
104	Hollywood - South	4, 5, 13	\$ 323,631.23	\$ 244,889.91	\$ 568,521.14
130	Mission Hills - Panorama City - North Hills	6, 7, 12	\$ 412,683.55	\$ 307,039.51	\$ 719,723.06
94	North Hollywood - Valley Village	2, 4	\$ 424,157.04	\$ 319,842.47	\$ 743,999.51
183	Northeast Los Angeles - North	1, 13, 14	\$ 426,526.98	\$ -	\$ 426,526.98
177	Northeast Los Angeles - South	1, 14	\$ 265,770.55	\$ -	\$ 265,770.55
60	Northridge	12	\$ 217,413.33	\$ 165,265.09	\$ 382,678.42
105	Palms - Mar Vista - Del Rey	5, 11	\$ 345,489.95	\$ 261,410.81	\$ 606,900.76
95	Reseda - West Van Nuys	3, 5, 6, 12	\$ 331,963.57	\$ 249,715.04	\$ 581,678.61
185	San Pedro / Port of Los Angeles / UI La Rambla	15	\$ 247,425.73	\$ -	\$ 247,425.73
84	Sherman Oaks - Studio City / UI Universal City	2, 4	\$ 303,334.65	\$ -	\$ 303,334.65
138	Silver Lake - Echo Park - Elysian Valley	1, 4, 13	\$ 210,275.53	\$ -	\$ 210,275.53
163	Southeast Los Angeles	8, 9, 15	\$ 395,823.48	\$ 291,046.10	\$ 686,869.58
169	Southeast Los Angeles - North	9	\$ 378,282.81	\$ 281,265.65	\$ 659,548.46
119	South Los Angeles	8, 9	\$ 295,511.30	\$ 218,957.13	\$ 514,468.43
120	Sun Valley - La Tuna Canyon	2, 6, 7	\$ 279,112.29	\$ 210,702.73	\$ 489,815.02
139	Sunland-Tujunga - Lake View Terr - Shadow Hills	7	\$ 189,409.59	\$ -	\$ 189,409.59
96	Sylmar	7	\$ 232,653.14	\$ -	\$ 232,653.14
61	Valley Glen - North Sherman Oaks	2, 4, 6	\$ 247,883.02	\$ 186,534.71	\$ 434,417.73
44	Van Nuys - North Sherman Oaks	4, 6	\$ 251,342.45	\$ 190,061.72	\$ 441,404.17
106	Venice	11	\$ 124,293.66	\$ 95,035.39	\$ 219,329.05
85	West Los Angeles	5, 11	\$ 306,981.50	\$ 238,700.58	\$ 545,682.08
107	West Adams	5, 10	\$ 274,859.60	\$ 205,207.86	\$ 480,067.46
146	West Hills - Woodland Hills/ UI Canoga Park	3, 12	\$ 338,454.92	\$ -	\$ 338,454.92
67	Westchester - Playa del Rey / LAX	11	\$ 219,202.77	\$ 169,933.24	\$ 389,136.01
147	Westlake	1, 13	\$ 319,284.56	\$ 237,971.70	\$ 557,256.26
45	Westwood / UI Sawtelle VA Center	5, 11	\$ 176,695.14	\$ 134,950.77	\$ 311,645.91
68	Wilshire - Koreatown	1, 4, 10, 13	\$ 484,481.21	\$ 362,990.60	\$ 847,471.81
121	Wilmington - Harbor City / LA Port of LA	15	\$ 223,203.41	\$ -	\$ 223,203.41
108	Wilshire - West	4, 5, 10	\$ 437,207.34	\$ 336,993.44	\$ 774,200.78
43	TOTALS		\$ 12,205,499.85	\$ 6,229,228.22	\$ 18,434,728.07

HOLLY L. WOLCOTT
CITY CLERK

SHANNON D. HOPPE
EXECUTIVE OFFICER

City of Los Angeles
CALIFORNIA



ERIC GARCETTI
MAYOR

OFFICE OF THE
CITY CLERK

Council and Public Services Division
200 N. SPRING STREET, ROOM 395
LOS ANGELES, CA 90012
GENERAL INFORMATION - (213) 978-1133
FAX: (213) 978-1040

PATRICE Y. LATTIMORE
ACTING DIVISION MANAGER

CLERK.LACITY.ORG

When making inquiries relative to
this matter, please refer to the
Council File No.: 18-0611

OFFICIAL ACTION OF THE LOS ANGELES CITY COUNCIL

November 2, 2018

Council File No.: 18-0611
Council Meeting Date: October 31, 2018
Agenda Item No.: 37
Agenda Description: ARTS, ENTERTAINMENT, PARKS AND RIVER COMMITTEE REPORT
relative to the implementing authorities for the Measure A grant program.

Council Action: ARTS, ENTERTAINMENT, PARKS AND RIVER COMMITTEE REPORT -
ADOPTED

Council Vote:

ABSENT BLUMENFIELD
YES BONIN
YES BUSCAINO
YES CEDILLO
YES ENGLANDER

ABSENT HARRIS-DAWSON
YES HUIZAR
YES KORETZ
ABSENT KREKORIAN
YES MARTINEZ

YES O'FARRELL
YES PRICE
YES RODRIGUEZ
YES RYU
YES WESSON

HOLLY L. WOLCOTT
CITY CLERK

Pursuant to Charter/Los Angeles Administrative Code Section(s): 14.7

FILE SENT TO MAYOR:

11/02/2018

LAST DAY FOR MAYOR TO ACT:

11/13/2018

✓
APPROVED

*DISAPPROVED

*VETO

Mayor

11/06/2018

DATE SIGNED

Adopted Report(s)

Title

Report from Arts, Entertainment, Parks and River Committee

Date

10/24/2018

ARTS, ENTERTAINMENT, PARKS AND RIVER COMMITTEE REPORT relative to the implementing authorities for the Measure A grant program.

Recommendations for Council action, SUBJECT TO THE APPROVAL OF THE MAYOR:

1. **DESIGNATE** the L.A. For Kids Steering Committee as the administering entity for the new Measure A grant program, with the Department of Recreation and Parks (RAP) serving as the grant administrator pursuant to the August 8, 2018 recommendation made on Council file No. 18-0611.
2. **AUTHORIZE** the Controller to establish new Special Funds within Department 88, to receive and disburse Measure A program funds, as cash flow or for reimbursement of program expenses, as follows:
 - a. **MAC1 - Community Based Park Investment Program.**
 - b. **MAC2 - Safe, Clean Neighborhood Parks, Healthy Communities, and Urban Greening Program.**
 - c. **MAC3 - Natural Lands, Open Spaces and Local Beaches, Water Conservation, and Watershed Protection Program.**
 - d. **MAC4 - Regional Recreational Facilities, Multi-use Trails and Accessibility Program.**
 - e. **MAC5 - Youth and Veteran Job Training and Placement Opportunities.**
 - f. **MA - Maintenance and Servicing.**
 - g. **MA - Program Innovation.**
 - h. **MA - Bonds.**
 - i. **MA - Bond Match.**
 - j. **MA - Miscellaneous.**
3. **REQUEST** the City Attorney with assistance from the City Administrative Officer (CAO), the Chief Legislative Analyst (CLA), RAP, and the Controller, as needed, to finalize an ordinance to implement the adopted recommendations.
4. **INSTRUCT** the RAP to submit an annual expenditure plan and quarterly status updates for the Measure A grant program. Recreation and Parks will be responsible for processing all accounting transactions funded by the Measure A grant.
5. **INSTRUCT** the RAP, with assistance from the CAO, to report to the LA for Kids Steering Committee on the following issues:

- a. Identify any proposed staffing needs to support program activities.
- b. Analyze the cost effectiveness of utilizing joint use agreements between the City and the Los Angeles Unified School District to address recreational needs in underserved or high density areas, and confirm whether Measure A program funds may be used to support the associated operational cost.

6. AUTHORIZE the CAO and REQUEST the City Attorney to make technical changes, including adjustments to the names of the new Special Funds reflected in Recommendation 2 above, as needed to implement Mayor and Council intentions.

Fiscal Impact Statement: The CAO reports that the City will receive an annual allocation estimated at \$22.4 million in Measure A grant funds from the County based on a per capita formula, and potentially additional funding through competitive award cycles. To the extent that these grant funds are used to acquire or construct new facilities or new amenities at existing facilities, there is an anticipated increase in associated operational and maintenance expenses. However, any potential impact on the General Fund would be partially offset by Measure A funds available to offset the associated incremental increases in operational and maintenance expenses. Any direct impact on the General Fund would be addressed through the City's annual budget process following acquisition and/or the completion of the respective projects.

Community Impact Statement: None submitted.

Summary:

At the meeting held October 24, 2018, your Arts, Entertainment, Parks and River Committee considered the August 17, 2018 and October 10, 2018 CAO reports relative to the implementing authorities for the Measure A grant program. The CAO reports attached to the Council file, includes some background on the matter.

After an opportunity for public comment was held, the Committee moved to approve the recommendations contained in the CAO reports as reflected above. This matter is now forwarded to the City Council for its consideration.

Respectfully Submitted,

ARTS, ENTERTAINMENT, PARKS AND RIVER COMMITTEE

MEMBER	VOTE
O'FARRELL:	YES
RYU:	YES
PRICE:	ABSENT
18-0611_rpt_aepr_10-24-18	



-NOT OFFICIAL UNTIL COUNCIL ACTS-

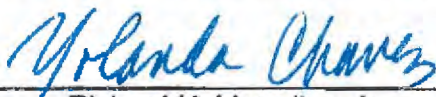
TRANSMITTAL

TO Council	DATE 10-11-18	COUNCIL FILE NO. 18-0611
FROM The Office of the City Administrative Officer	COUNCIL DISTRICT Various	

On August 17, 2018, the Office of the City Administrative Officer released a report providing recommendations for implementing authorities for the County-funded Measure A grant program. The report also indicates a need for future reporting to further define roles and address other authorities needed to fully implement the program. The program management team has continued these discussions and recommend by mutual agreement that additional implementing authorities be adopted as part of the aforementioned report, as discussed herein.

In an effort to streamline the process for project approvals and invoice processing, the Department of Recreation and Parks (RAP) would prepare an annual expenditure plan and quarterly updates to the L.A. for Kids Steering Committee, and would be solely responsible for processing all accounting documents, subject to Council approval. RAP would work with each respective Council Office and local communities to develop projects that would be incorporated into the annual expenditure plan. The quarterly reports will provide status updates on all active Measure A projects to include at a minimum, planned or actual start dates, phase of development, estimated completion date, and incurred project expenditures. RAP would be responsible for coordinating with the Controller's Office to process all accounting transactions, including review of payment requests and processing of invoices for Measure A. RAP in partnership with BOE will deliver all planning, design, construction and project management of Measure A funded projects, with use of consultant support on an as-needed basis.

Recommendation: That the Council, subject to approval of the Mayor, instruct the Department of Recreation and Parks to report to the L.A. for Kids Steering Committee with an annual expenditure plan and quarterly status updates for the Measure A grant program and to be responsible for processing all accounting transactions funded by the grant.



Richard H. Llewellyn, Jr.
City Administrative Officer

REPORT FROM

OFFICE OF THE CITY ADMINISTRATIVE OFFICER

Date: August 17, 2018

CAO File No. 0220-05522-0000

Council File No. 18-0611

Council District: All

To: Mayor
Council

From: Richard H. Llewellyn, Jr., City Administrative Officer 

Subject: **IMPLEMENTING AUTHORITIES FOR MEASURE A PROGRAM**

SUMMARY

In 2016, County voters approved Measure A, which will provide the City (in perpetuity) an estimated allocation of \$22.4 million in formula based funds annually, with additional competitive grant opportunities. As the continuation program to the County's Proposition A program that is currently administered by the L.A. For Kids Steering Committee, the Office of the City Administrative Officer (CAO) recommends continuing this same governance structure. This will facilitate broad coordination among all the implementing departments, leveraging of resources across the City and provide representation of both Council and Mayor priorities. In order to receive program funding that is anticipated by Spring of 2019, the City needs to establish 10 new Special Funds to properly account for use of the various categories of funding. The allocation of City funds will be distributed across 43 study areas that overlap Council District boundaries, with additional details on use restrictions and funding availability presented in the remainder of this report and in the accompanying Attachments.

RECOMMENDATIONS

That the Council, subject to the approval of the Mayor:

1. Designate the L.A. For Kids Steering Committee as the governance body for the new Measure A grant program, with the Department of Recreation and Parks (RAP) serving as the grant administrator pursuant to the recommendation made on August 8, 2018 (C.F. 18-0611).
2. Authorize the Controller to establish new Special Funds within Department 88, to receive and disburse Measure A program funds, as cash flow or for reimbursement of program expenses, as follows:
 - i. **MAC1** - Community Based Park Investment Program
 - ii. **MAC2** - Safe, Clean Neighborhood Parks, Healthy Communities, and Urban Greening Program
 - iii. **MAC3** - Natural Lands, Open Spaces and Local Beaches, Water Conservation, and Watershed Protection Program
 - iv. **MAC4** - Regional Recreational Facilities, Multi-use Trails and Accessibility Program
 - v. **MAC5** - Youth and Veteran Job Training and Placement Opportunities
 - vi. **MA** - Maintenance and Servicing

- vii. MA - Program Innovation
- viii. MA - Bonds
- ix. MA - Bond Match
- x. MA - Miscellaneous

3. Request the City Attorney with assistance from the Office of the City Administrative Officer (CAO), the Office of the Chief Legislative Analyst (CLA), RAP, and the Controller, as needed to finalize an ordinance to implement the adopted recommendations of this report.
4. Instruct the CAO and RAP to provide a subsequent report(s) on the proposed annual budgeting and reprogramming process for the Measure A program, any proposed staffing requests to support program activities, and to address questions raised relative to the cost effectiveness of utilizing joint use agreements between the City and the Los Angeles Unified School District to address recreational needs in underserved or high density areas, and whether Measure A program funds may be used to support the associated operational costs.
5. Authorize the CAO and the City Attorney to make technical changes, including adjustments to the names of the new Special Funds reflected in Recommendation 2 above, as needed to implement Mayor and Council intentions.

FISCAL IMPACT

The City will receive an annual allocation estimated at \$22.4 million in Measure A grant funds from the County based on a per capita formula, and potentially additional funding through competitive award cycles. To the extent that these grant funds are used to acquire or construct new facilities or new amenities at existing facilities, there is an anticipated increase in associated operational and maintenance (O&M) expenses. However, any potential impact on the General Fund would be partially offset by Measure A funds available to offset the associated incremental increases in O&M expenses. Any direct impact on the General Fund would be addressed through the City's annual budget process following acquisition and/or the completion of the respective projects.

DISCUSSION

I. Background:

Measure A renews the County's commitment to provide ongoing investments in the acquisition and development of parks and recreational facilities, the preservation of open space, beaches and watershed quality, along with funding dedicated to programming, related maintenance and job training elements. Monies available through the Measure A grant program will be generated in perpetuity through the collection of a parcel tax, for total annual funding of \$96.8 million.

The Los Angeles County Regional Park and Open Space District will administer the Measure A program and allocate funding on a per capita formula basis to defined study areas. The City of Los Angeles represents a total of 43 study areas due to its geographic size and population. In addition to the per capita, formula based allocations, additional funds will be available through competitive grant opportunities. The City will receive an estimated \$22 million in formula based funding on an annual basis, with additional awards subject to the outcome of the competitive award cycles.

Measure A will continue critical funding that was previously allocated to local agencies through the Proposition A program. Under Proposition A, the City received an estimated \$112 million between 1992 and 2019.

II. Governance Body and Division of Responsibilities:

City Council has designated the L.A. for Kids Steering Committee as the administering entity for multiple capital programs involving recreational and cultural facilities, including the City's Proposition K and Parks First Program, the County's Proposition A program and the State's Proposition 12 and Proposition 40 program. The body is comprised of representation from the Office of the Chief Legislative Analyst (CLA), the Office of the Mayor and the Office of the City Administrative Officer (CAO), with the latter serving as the chair. Ex-officio, non-voting members of the Steering Committee include the City Engineer and the General Managers of the Department of Recreation and Parks (RAP), the Housing and Community Investment Department, the Department of Cultural Affairs, the Library Department and a City Council staff person appointed by the Council president.

Our Office recommends designating the L.A. for Kids Steering Committee as the administering entity for the Measure A program to continue to facilitate broad coordination and leveraging of resources across the City, with the direct involvement of implementing departments as ex-officio members and representation of Council and Mayor priorities through the members comprising the governance body. This recommended designation would provide continuity and coordination of the current roles and responsibilities, as summarized below:

- L.A. for Kids Steering Committee – administers expenditure of funds, submission of annual budget for Council and Mayor approval, development of financing options, and general oversight over authorized projects with respect to cost control and the timely delivery of projects.

- Board of Recreation and Parks Commissioners – approves all acquisition of real property as dedicated parkland, the bid and award of construction contracts, settlement of disputes and final acceptance of completed projects.
- RAP – serves as the grant administrator of the program, administers community engagement, submits grant applications and accepts awarded funds, processes all accounting transactions, maintains and operates completed projects, and reports to the Steering Committee on matters falling under its purview.
- CAO Staff – serves as the fund administrator, responsible for final invoice approval, presentation of the annual budget, facilitates regular program management meetings to monitor the status of projects and develops options to address project development barriers, including funding shortfalls or cash flow requirements.

By continuing the existing roles and responsibilities as described above, the City will ensure that Measure A funds are strategically utilized to support a broader range of City initiatives and policy objectives. At this time, several of the grant programs falling under the purview of the L.A. for Kids Steering Committee are nearing its completion. Designating the Steering Committee as the administrative entity for the new Measure A program will better facilitate the coordination of resources to satisfy all the requirements of the existing grant programs and reduce the potential impact to the General Fund to address funding shortfalls for required projects.

III. Funding Distribution, Anticipated Availability & Establishment of New Funds:

Under Measure A, the City is divided into 43 study areas that overlap multiple Council Districts (Attachment 4). The annual allocations per study area range from \$102,000 to \$890,000 and must be utilized in the respective study areas, but may be combined with adjacent study areas to develop regional projects or pooled for up to five program years.

The City is eligible to receive funding under a total of seven categories, which includes three categories of formula based allocations and four competitive award categories, as summarized below, with additional details provided in Attachment 1. The County will not initiate the competitive funding cycles until the conclusion of open litigation, currently in process of appeal. Funding availability for the formula based program is currently anticipated by March 2019 (Attachment 2). The Competitive Grants for the City are available on multi-year cycles and range from \$50,000 to \$7 million. The anticipated deadline for the first round of competitive funding is January 2019, with awards anticipated by late 2019, and additional details reflected in Attachment 3.

• Formula Based Grant Allocation Categories

Measure A is based on a County-wide needs assessment covering 43 distinct study areas that fall within the City. The County will determine the annual funding allocation for each study area based on a Per Capita Structural Improvements formula. There are three formula based grant allocation categories from which the City anticipates receiving up to an estimated \$22.4 million annually. RAP will continue to work with RPOSD to administer

maintenance and servicing funds for approved expenditures on completed Proposition A and Measure A funded facilities. Annual allocation funds from Category 1 and 2 may be consolidated among one or more adjacent study areas to create a joint beneficial or regional project. The City has several study areas that are connected by geographic features, in addition to sharing similar socio-economic and cultural characteristics. In addition to consolidating Category 1 and 2 funding, Category 3 and 4 competitive funding may also be used in combination with the annual allocations to fund large regional projects, subject to award.

- o Category 1 – Community-Based Park Investment Program
- o Category 2 – Neighborhood Parks, Healthy Communities, & Urban Greening
- o Maintenance and Servicing – Funds to offset increased costs associated with Proposition A and Measure A projects.

- **Competitive-Based Grant Funding Categories**

Categories 3 and 4 consist of a combination of allocations to designated County departments as well as several competitive grant programs for both eligible public agencies and nonprofits. Competitive-based grants (which include general competitive grants, high and very high need study areas, planning and design, and recreation access) will be administered according to regular multi-year cycles over the life of Measure A. The County takes into consideration the correlation of population to available local park and open space when defining park needs. High and Very High Need areas are generally dense populations living within urban areas where available vacant land is sparse, and parks and open spaces are very limited.

- o Category 3 – Natural Lands, Local Beaches, Water Conservation and Protection Program
- o Category 4 – Regional Recreation, Multi-Use trails, and Accessibility
- o Category 3 and 4 – Recreation Access Competitive Grants
- o Category 5 – Youth and Veteran Job Training and Placement

- **Establishment of New City Funds**

In order to ensure appropriate tracking and expenditures of monies, including the allocation and use of any program interest earnings, authority to establish a total of 10 new Special Funds is needed, as follows:

- i. Community Based Park Investment Program
- ii. Safe, Clean Neighborhood Parks, Healthy Communities, and Urban Greening Program
- iii. Natural Lands, Open Spaces and Local Beaches, Water Conservation, and Watershed Protection Program
- iv. Regional Recreational Facilities, Multi-use Trails and Accessibility Program
- v. Youth and Veteran Job Training and Placement Opportunities
- vi. Maintenance and Servicing

- vii. Program Innovation
- viii. Bonds
- ix. Bond Match
- x. Miscellaneous

IV. Allowable and Prohibited Use of Funds:

Measure A provides formula based funding to the respective 43 study areas of the City that takes into consideration the total square footage of building improvements and population, with additional funding provided to areas identified as high and very high needs. The eligible and ineligible use of funds, are summarized below:

- **Eligible Projects and Costs:**

New play structures; new or updated restrooms; ADA accessibility; security and lighting; recreation center improvements; parcel/land acquisition; tree plantings; skate parks; soccer/synthetic fields; field improvements; shade structures; pools and splash pads; park enhancements; new or enhanced trails; and, dog parks.

- **Ineligible Projects and Costs:**

Routine maintenance; staff costs; projects closed to the public; projects lacking a park, open space or recreational nexus; food expenses; and, non-related project staff costs

V. Program Community Engagement Requirements:

Applicants must conduct community outreach and engagement for all Measure A funded projects with the intent to ensure that communities throughout the City have an opportunity to provide input on spending priorities for Measure A funded projects, while also facilitating a transparent process by which agencies report use of Measure A funds. Competitive grant applicants will receive additional points for conducting robust outreach and engagement that exceeds the minimal requirements.

There are three types of community engagement approaches for Measure A that include information sharing, concurrent engagement, and participatory engagement, as summarized below. The type of engagement required for each project will be based on the category of funding (annual allocations, competitive grants, and maintenance funds) and the award amount for each project.

- **Information Sharing**

Information sharing is required for all Measure A funded projects. This type of engagement activity allows agencies to update their communities on the status of a project or a plan without actively seeking community feedback. This approach is typically appropriate when the agency has previously engaged the community and seeks to provide project or status updates.

- **Concurrent Engagement**

Concurrent engagement allows agencies to discuss Measure A funded projects or program matters in conjunction with other community meetings. This may include community planning sessions, regularly scheduled Council meetings, and other events that facilitate community engagement and solicit feedback on the spending priorities within a study area.

- **Participatory Engagement**

Participatory engagement includes meetings, workshops, and other events that solely discuss the priority spending of Measure A funds. These events focus entirely on parks and recreation priorities and the intended use of Measure A funds to meet the defined priorities.

VI. Future Reporting:

At its meeting held on August 8, 2018, the Arts, Entertainment and River Committee raised questions relative to the cost effectiveness of utilizing Joint Use Agreements (JUA) between the City and the Los Angeles Unified School District to address recreational needs in underserved or high density areas and whether Measure A program funds could be utilized to support the associated operational costs. Future reporting is needed to address these questions along with other needed authorities to implement and support the program beyond the areas presented in this report. Prior to receipt of Measure A funding, the program management team will meet on a regular basis to determine the appropriate means for reporting on the annual budget and reprogramming procedures. Our Office will prepare future reports to Council and the Mayor, to provide status updates, recommended changes in roles and responsibilities and requests for any additional staffing resources or additional authorities needed to properly implement and administer the new Measure A grant program.

Attachments:

- 1 – Measure A Funding Categories
- 2 – Measure A Timeline for Funding
- 3 – Measure A Timeline for Release of Competitive Grant Programs
- 4 – Measure A Programmed Allocations by Study Area for the City of Los Angeles

RHL:JMS:05100000

Funding Categories for Measure A - Per Capita Funds		
Funding Categories	Description	Estimated Funding Available in 2015-16
Community-Based Park Investment Program	• Allocated to each Study Area using the Per Capita and Structural Improvements Formula.	\$ 33,204,270
Neighborhood Parks, Healthy Communities, and Urban Green Program	• Allocated to High and Very High Need Study Areas, as identified in the most current PNA.	\$ 12,333,014
Allocation for LA County Department of Beaches and Harbors (DBH)	• DBH shall receive up to 25 percent of the total Category 3 funds as an annual allocation. • Projects should improve and protect open space, watersheds, and water resources through planning, acquisition, development, improvement, and restoration, of multi-benefit parks	\$ 3,083,253
Allocation for LA County Department of Parks and Recreation (DPR)	• DPR shall receive up to 25 percent of the total Category 4 funds as an annual allocation. • Projects should improve and protect regional recreational facilities, trails, and accessibility.	\$ 3,083,253
County Cultural Facilities	• Up to 10 percent of the total Category 4 funds will be allocated to County-owned cultural facilities. • Projects should improve, refurbish, or enhance existing County cultural facilities or create new facilities	\$ 1,233,301
Maintenance and Servicing Funds	• Maintenance and Servicing funds can be used to offset increased maintenance costs resulting from RPOSD-funded projects.	\$ 14,230,401

Funding Categories for Competitive Grants				
Funding Categories	Description	Grant Cycle	Estimated Funds Per Cycle	Maximum Award
Natural Lands, Local Beaches, Water Conservation and Protection Competitive Program	• Projects should improve and protect open space, watersheds, and water resources through planning, acquisition, development, improvement, and restoration, of multi-benefit parks. • Recommended targeting 30 percent of funds for projects located in High and Very High Need Study Areas.	Four Year	\$ 18,679,368	\$ 3,700,000
Regional Recreation, Multi-Use Trails & Accessibility Competitive Program	• Projects should improve and protect regional recreational facilities, trails and accessibility. • Recommended targeting 30 percent of funds for projects located in High or Very High Need Study Areas	Four Year	\$ 14,732,820	\$ 3,100,000
Acquisition-Only Competitive Program	• Projects should acquire land with the intent to improve and protect open space, watersheds, and water resources or improve and protect regional recreational facilities, trails and accessibility. • Recommended targeting 30 percent of funds for projects located in High and Very High Need Study Areas.	Annual	\$ 2,713,263	\$ 1,000,000
Recreation Access Program	• Programs should increase the ability of residents to access public lands, park facilities, and park amenities, and may include education, interpretive services, and transportation.	Two Year	\$ 7,399,808	\$ 1,850,000
Youth and Veteran Job Training and Placement Program	• Projects should provide education and skills training or certification and job placement in the field of parks and recreation, for youths and veterans.	Three Year	\$ 10,815,105	\$ 1,400,000
Planning and Design Funds (Technical Assistance)	• Projects should include preparation work related to planning.	Annual	\$ 2,500,000	\$ 250,000

Measure A Timeline for Funding

Attachment 2

Summer /Fall 2018

RPOSD hosts Parks 103 Training – How to apply for Measure A Grants

RPOSD submits final report to LA County Board of Supervisors to adopt recommendations of the Measure A Steering Committee

RPOSD will release Guidelines to Park Agencies following County Board of Supervisors' approval

Fall/Winter 2018/19

RPOSD opens Measure A system to Park Agencies, Local Non-Profit Organizations and School Districts to register with the County

Park Agencies will begin to submit initial Formula-based applications

Due to Measure A litigation, the City of Los Angeles will submit projects and engage in limited project planning only until

RPOSD approves applications and awards Formula-based projects under Categories 1 & 2

Measure A Litigation

Measure A is under legal challenge. Plaintiff lost initial case, and has appealed Court ruling.

RPOSD has indicated that competitive grants will not be released unless litigation is resolved in the County's favor

Measure A Timeline for Release of Competitive Grant Programs

Capital Grants

PROGRAM	FUND CATEGORY	FREQUENCY	YEAR 1*	YEAR 2	YEAR 3	YEAR 4	YEAR 5
Planning and Design	Categories 3 and 4	1 year	Q4 \$2,500,000	Q4 \$2,500,000	Q4 \$2,500,000	Q4 \$2,500,000	Q4 \$2,500,000
Competitive	Categories 3 and 4	4 years	Q3 \$8,353,053				Q3 \$33,412,212
Acquisition -only	Categories 3 and 4	1 year	Q3 \$2,713,263	Q3 \$2,713,263	Q3 \$2,713,263	Q3 \$2,713,263	Q3 \$2,713,263
Recreation Access	Categories 3 and 4	2 years	Q1 \$3,699,904		Q1 \$7,399,808		Q1 \$7,399,808
Youth and Veteran Job Training and Placement	Category 5	3 years	Q2 \$3,605,035			Q2 \$10,815,105	

Programmatic Grants

ID	Study Area Name	Council District(s)	RAP Region(s)	Population (2014)	Category 1 * Allocation (Estimate)	Category 2 * Allocation (Estimate)	Category 1 & 2 * Allocation (Estimate)
117	Arleta - Pacoima	6, (7)	Valley	105,696	\$ 293,795.00	\$ 217,155.00	\$ 510,950.00
83	Baldwin Hills - Leimert - Hyde Park	8, 10	Pacific	81,334	\$ 258,985.83	\$ 195,508.36	\$ 454,494.19
26	Bel Air - Beverly Crest/ UI Hollywood Hills	4, 5	Valley	20,667	\$ 102,404.39	\$ -	\$ 102,404.39
135	Boyle Heights	14	Metro	85,937	\$ 257,973.78	\$ 192,047.66	\$ 451,021.44
129	Brentwood - Pacific Palisades	11	Valley	58,098	\$ 248,374.19	\$ -	\$ 248,374.19
58	Canoga Park - Winnetka	3, 12	Valley	90,788	\$ 282,463.00	\$ 212,513.73	\$ 494,976.73
118	Central City	1, 9, (14)	Metro	37,968	\$ 274,808.24	\$ 224,118.52	\$ 498,926.76
59	Central City North	1, 14	Metro	22,339	\$ 95,955.13	\$ 75,124.39	\$ 171,079.52
152	Chatsworth - Porter Ranch / UI Chatsworth	3, 12	Valley	99,808	\$ 389,340.16	\$ -	\$ 389,340.16
136	Encino - Tarzana	(3), (5), 6	Valley	71,252	\$ 287,551.08	\$ -	\$ 287,551.08
164	Exposition Park - University Park - Vermont Square	1, 8, 9	Pacific	172,227	\$ 492,494.47	\$ 365,729.30	\$ 858,223.77
73	Granada Hills - Knollwood	12	Valley	62,443	\$ 203,993.44	\$ -	\$ 203,993.44
43	Harbor Gateway	15	Pacific	42,338	\$ 148,268.87	\$ 113,385.11	\$ 261,653.98
103	Hollywood - North	(4), 13	Griffith	97,252	\$ 361,478.83	\$ -	\$ 361,478.83
104	Hollywood - South	4, (5), (13)	Griffith	104,938	\$ 339,777.18	\$ 257,107.46	\$ 596,884.64
130	Mission Hills - Panorama City - North Hills	6, 7, 12	Valley	149,756	\$ 433,272.32	\$ 322,357.71	\$ 755,630.03
94	North Hollywood - Valley Village	(2), 4	Valley	140,928	\$ 445,318.22	\$ 335,799.41	\$ 781,117.63
183	Northeast Los Angeles - North	1, 13, 14	Metro/Griffith	149,099	\$ 447,806.40	\$ -	\$ 447,806.40
177	Northeast Los Angeles - South	1, 14	Metro	95,095	\$ 279,029.84	\$ -	\$ 279,029.84
60	Northridge	12	Valley	68,214	\$ 228,260.08	\$ 173,510.16	\$ 401,770.24
105	Palms - Mar Vista - Del Rey	5, (11)	Valley	112,085	\$ 362,726.43	\$ 274,452.59	\$ 637,179.02
95	Reseda - West Van Nuys	(3), 5, (6), 12	Valley	112,146	\$ 348,525.22	\$ 262,273.31	\$ 610,698.53
185	San Pedro / Port of Los Angeles / UI La Rambla	15	Pacific	83,023	\$ 259,769.79	\$ -	\$ 259,769.79
84	Sherman Oaks - Studio City / UI Universal City	2, 4	Valley	80,764	\$ 318,468.01	\$ -	\$ 318,468.01
138	Silver Lake - Echo Park - Elysian Valley	1, 4, 13	Metro/Griffith	71,783	\$ 220,766.17	\$ -	\$ 220,766.17
163	Southeast Los Angeles	8, 9, 15	Pacific	154,141	\$ 415,571.11	\$ 305,566.38	\$ 721,137.49
169	Southeast Los Angeles - North	9	Metro/Pacific	137,819	\$ 397,155.33	\$ 295,297.99	\$ 692,453.32
119	South Los Angeles	(8), 9	Metro/Pacific	109,993	\$ 310,254.35	\$ 229,880.89	\$ 540,135.24
120	Sun Valley - La Tuna Canyon	2, 6, 7	Valley	92,025	\$ 293,037.20	\$ 221,214.68	\$ 514,251.88
139	Sunland-Tujunga - Lake View Terr - Shadow Hills	7	Valley	65,031	\$ 198,859.23	\$ -	\$ 198,859.23

**MEASURE A - CITY OF LOS ANGELES
PROGRAMMED ALLOCATIONS BY STUDY AREA**

ID	Study Area Name	Council District(s)	RAP Region(s)	Population (2014)	Category 1 * Allocation (Estimate)	Category 2 * Allocation (Estimate)	Category 1 & 2 * Allocation (Estimate)
96	Sylmar	7	Valley	81,225	\$ 244,260.20	\$ -	\$ 244,260.20
61	Valley Glen - North Sherman Oaks	2, 4, 6	Valley	83,534	\$ 260,249.90	\$ 195,840.92	\$ 456,090.82
44	Van Nuys - North Sherman Oaks	4, 6	Valley	81,887	\$ 263,881.92	\$ 199,543.90	\$ 463,425.82
106	Venice	11	Valley	37,309	\$ 130,494.66	\$ 99,776.70	\$ 230,271.36
85	West Los Angeles	5, 11	Pacific	80,023	\$ 322,296.80	\$ 250,609.34	\$ 572,906.14
107	West Adams	5, 10	Pacific	97,579	\$ 288,572.34	\$ 215,445.68	\$ 504,018.02
146	West Hills - Woodland Hills/ UI Canoga Park	(3), 12	Valley	90,301	\$ 355,340.43	\$ -	\$ 355,340.43
67	Westchester - Playa del Rey / LAX	11	Pacific	58,703	\$ 230,138.79	\$ 178,411.21	\$ 408,550.00
147	Westlake	1, 13	Metro/Griffith	114,579	\$ 335,213.66	\$ 249,844.10	\$ 585,057.76
45	Westwood / UJ Sawtelle VA Center	5, 11	Valley	53,498	\$ 185,510.46	\$ 141,683.47	\$ 327,193.93
68	Wilshire - Koreatown	1, 4, 10, 13	Metro	168,097	\$ 508,651.97	\$ 381,100.20	\$ 889,752.17
121	Wilmington - Harbor City / LA Port of LA	15	Pacific	80,814	\$ 234,339.03	\$ -	\$ 234,339.03
108	Wilshire - West	4, 5, 10	Metro	123,005	\$ 459,019.61	\$ 353,806.03	\$ 812,825.64
43	TOTALS			3,925,541	\$ 12,814,453.06	\$ 6,540,004.20	\$ 19,354,457.26

REPORT FROM

OFFICE OF THE CITY ADMINISTRATIVE OFFICER

Date: August 17, 2018

CAO File No. 0220-05522-0000

Council File No. 18-0611

Council District: All

To: Mayor
Council

From: Richard H. Llewellyn, Jr.,  City Administrative Officer
Subject: **IMPLEMENTING AUTHORITIES FOR MEASURE A PROGRAM**

SUMMARY

In 2016, County voters approved Measure A, which will provide the City (in perpetuity) an estimated allocation of \$22.4 million in formula based funds annually, with additional competitive grant opportunities. As the continuation program to the County's Proposition A program that is currently administered by the L.A. For Kids Steering Committee, the Office of the City Administrative Officer (CAO) recommends continuing this same governance structure. This will facilitate broad coordination among all the implementing departments, leveraging of resources across the City and provide representation of both Council and Mayor priorities. In order to receive program funding that is anticipated by Spring of 2019, the City needs to establish 10 new Special Funds to properly account for use of the various categories of funding. The allocation of City funds will be distributed across 43 study areas that overlap Council District boundaries, with additional details on use restrictions and funding availability presented in the remainder of this report and in the accompanying Attachments.

RECOMMENDATIONS

That the Council, subject to the approval of the Mayor:

1. Designate the L.A. For Kids Steering Committee as the governance body for the new Measure A grant program, with the Department of Recreation and Parks (RAP) serving as the grant administrator pursuant to the recommendation made on August 8, 2018 (C.F. 18-0611).
2. Authorize the Controller to establish new Special Funds within Department 88, to receive and disburse Measure A program funds, as cash flow or for reimbursement of program expenses, as follows:
 - i. **MAC1** - Community Based Park Investment Program
 - ii. **MAC2** - Safe, Clean Neighborhood Parks, Healthy Communities, and Urban Greening Program
 - iii. **MAC3** - Natural Lands, Open Spaces and Local Beaches, Water Conservation, and Watershed Protection Program
 - iv. **MAC4** - Regional Recreational Facilities, Multi-use Trails and Accessibility Program
 - v. **MAC5** - Youth and Veteran Job Training and Placement Opportunities
 - vi. **MA** - Maintenance and Servicing

- vii. MA - Program Innovation
 - viii. MA - Bonds
 - ix. MA - Bond Match
 - x. MA - Miscellaneous
3. Request the City Attorney with assistance from the Office of the City Administrative Officer (CAO), the Office of the Chief Legislative Analyst (CLA), RAP, and the Controller, as needed to finalize an ordinance to implement the adopted recommendations of this report.
 4. Instruct the CAO and RAP to provide a subsequent report(s) on the proposed annual budgeting and reprogramming process for the Measure A program, any proposed staffing requests to support program activities, and to address questions raised relative to the cost effectiveness of utilizing joint use agreements between the City and the Los Angeles Unified School District to address recreational needs in underserved or high density areas, and whether Measure A program funds may be used to support the associated operational costs.
 5. Authorize the CAO and the City Attorney to make technical changes, including adjustments to the names of the new Special Funds reflected in Recommendation 2 above, as needed to implement Mayor and Council intentions.

FISCAL IMPACT

The City will receive an annual allocation estimated at \$22.4 million in Measure A grant funds from the County based on a per capita formula, and potentially additional funding through competitive award cycles. To the extent that these grant funds are used to acquire or construct new facilities or new amenities at existing facilities, there is an anticipated increase in associated operational and maintenance (O&M) expenses. However, any potential impact on the General Fund would be partially offset by Measure A funds available to offset the associated incremental increases in O&M expenses. Any direct impact on the General Fund would be addressed through the City's annual budget process following acquisition and/or the completion of the respective projects.

DISCUSSION

I. Background:

Measure A renews the County's commitment to provide ongoing investments in the acquisition and development of parks and recreational facilities, the preservation of open space, beaches and watershed quality, along with funding dedicated to programming, related maintenance and job training elements. Monies available through the Measure A grant program will be generated in perpetuity through the collection of a parcel tax, for total annual funding of \$96.8 million.

The Los Angeles County Regional Park and Open Space District will administer the Measure A program and allocate funding on a per capita formula basis to defined study areas. The City of Los Angeles represents a total of 43 study areas due to its geographic size and population. In addition to the per capita, formula based allocations, additional funds will be available through competitive grant opportunities. The City will receive an estimated \$22 million in formula based funding on an annual basis, with additional awards subject to the outcome of the competitive award cycles.

Measure A will continue critical funding that was previously allocated to local agencies through the Proposition A program. Under Proposition A, the City received an estimated \$112 million between 1992 and 2019.

II. Governance Body and Division of Responsibilities:

City Council has designated the L.A. for Kids Steering Committee as the administering entity for multiple capital programs involving recreational and cultural facilities, including the City's Proposition K and Parks First Program, the County's Proposition A program and the State's Proposition 12 and Proposition 40 program. The body is comprised of representation from the Office of the Chief Legislative Analyst (CLA), the Office of the Mayor and the Office of the City Administrative Officer (CAO), with the latter serving as the chair. Ex-officio, non-voting members of the Steering Committee include the City Engineer and the General Managers of the Department of Recreation and Parks (RAP), the Housing and Community Investment Department, the Department of Cultural Affairs, the Library Department and a City Council staff person appointed by the Council president.

Our Office recommends designating the L.A. for Kids Steering Committee as the administering entity for the Measure A program to continue to facilitate broad coordination and leveraging of resources across the City, with the direct involvement of implementing departments as ex-officio members and representation of Council and Mayor priorities through the members comprising the governance body. This recommended designation would provide continuity and coordination of the current roles and responsibilities, as summarized below:

- L.A. for Kids Steering Committee – administers expenditure of funds, submission of annual budget for Council and Mayor approval, development of financing options, and general oversight over authorized projects with respect to cost control and the timely delivery of projects.

- **Board of Recreation and Parks Commissioners** – approves all acquisition of real property as dedicated parkland, the bid and award of construction contracts, settlement of disputes and final acceptance of completed projects.
- **RAP** – serves as the grant administrator of the program, administers community engagement, submits grant applications and accepts awarded funds, processes all accounting transactions, maintains and operates completed projects, and reports to the Steering Committee on matters falling under its purview.
- **CAO Staff** – serves as the fund administrator, responsible for final invoice approval, presentation of the annual budget, facilitates regular program management meetings to monitor the status of projects and develops options to address project development barriers, including funding shortfalls or cash flow requirements.

By continuing the existing roles and responsibilities as described above, the City will ensure that Measure A funds are strategically utilized to support a broader range of City initiatives and policy objectives. At this time, several of the grant programs falling under the purview of the L.A. for Kids Steering Committee are nearing its completion. Designating the Steering Committee as the administrative entity for the new Measure A program will better facilitate the coordination of resources to satisfy all the requirements of the existing grant programs and reduce the potential impact to the General Fund to address funding shortfalls for required projects.

III. Funding Distribution, Anticipated Availability & Establishment of New Funds:

Under Measure A, the City is divided into 43 study areas that overlap multiple Council Districts (Attachment 4). The annual allocations per study area range from \$102,000 to \$890,000 and must be utilized in the respective study areas, but may be combined with adjacent study areas to develop regional projects or pooled for up to five program years.

The City is eligible to receive funding under a total of seven categories, which includes three categories of formula based allocations and four competitive award categories, as summarized below, with additional details provided in Attachment 1. The County will not initiate the competitive funding cycles until the conclusion of open litigation, currently in process of appeal. Funding availability for the formula based program is currently anticipated by March 2019 (Attachment 2). The Competitive Grants for the City are available on multi-year cycles and range from \$50,000 to \$7 million. The anticipated deadline for the first round of competitive funding is January 2019, with awards anticipated by late 2019, and additional details reflected in Attachment 3.

- **Formula Based Grant Allocation Categories**

Measure A is based on a County-wide needs assessment covering 43 distinct study areas that fall within the City. The County will determine the annual funding allocation for each study area based on a Per Capita Structural Improvements formula. There are three formula based grant allocation categories from which the City anticipates receiving up to an estimated \$22.4 million annually. RAP will continue to work with RPOSD to administer

maintenance and servicing funds for approved expenditures on completed Proposition A and Measure A funded facilities. Annual allocation funds from Category 1 and 2 may be consolidated among one or more adjacent study areas to create a joint beneficial or regional project. The City has several study areas that are connected by geographic features, in addition to sharing similar socio-economic and cultural characteristics. In addition to consolidating Category 1 and 2 funding, Category 3 and 4 competitive funding may also be used in combination with the annual allocations to fund large regional projects, subject to award.

- o Category 1 – Community-Based Park Investment Program
- o Category 2 – Neighborhood Parks, Healthy Communities, & Urban Greening
- o Maintenance and Servicing – Funds to offset increased costs associated with Proposition A and Measure A projects.

- **Competitive-Based Grant Funding Categories**

Categories 3 and 4 consist of a combination of allocations to designated County departments as well as several competitive grant programs for both eligible public agencies and nonprofits. Competitive-based grants (which include general competitive grants, high and very high need study areas, planning and design, and recreation access) will be administered according to regular multi-year cycles over the life of Measure A. The County takes into consideration the correlation of population to available local park and open space when defining park needs. High and Very High Need areas are generally dense populations living within urban areas where available vacant land is sparse, and parks and open spaces are very limited.

- o Category 3 – Natural Lands, Local Beaches, Water Conservation and Protection Program
- o Category 4 – Regional Recreation, Multi-Use trails, and Accessibility
- o Category 3 and 4 – Recreation Access Competitive Grants
- o Category 5 – Youth and Veteran Job Training and Placement

- **Establishment of New City Funds**

In order to ensure appropriate tracking and expenditures of monies, including the allocation and use of any program interest earnings, authority to establish a total of 10 new Special Funds is needed, as follows:

- i. Community Based Park Investment Program
- ii. Safe, Clean Neighborhood Parks, Healthy Communities, and Urban Greening Program
- iii. Natural Lands, Open Spaces and Local Beaches, Water Conservation, and Watershed Protection Program
- iv. Regional Recreational Facilities, Multi-use Trails and Accessibility Program
- v. Youth and Veteran Job Training and Placement Opportunities
- vi. Maintenance and Servicing

- vii. Program Innovation
- viii. Bonds
- ix. Bond Match
- x. Miscellaneous

IV. Allowable and Prohibited Use of Funds:

Measure A provides formula based funding to the respective 43 study areas of the City that takes into consideration the total square footage of building improvements and population, with additional funding provided to areas identified as high and very high needs. The eligible and ineligible use of funds, are summarized below:

- **Eligible Projects and Costs:**

New play structures; new or updated restrooms; ADA accessibility; security and lighting; recreation center improvements; parcel/land acquisition; tree plantings; skate parks; soccer/synthetic fields; field improvements; shade structures; pools and splash pads; park enhancements; new or enhanced trails; and, dog parks.

- **Ineligible Projects and Costs:**

Routine maintenance; staff costs; projects closed to the public; projects lacking a park, open space or recreational nexus; food expenses; and, non-related project staff costs.

V. Program Community Engagement Requirements:

Applicants must conduct community outreach and engagement for all Measure A funded projects with the intent to ensure that communities throughout the City have an opportunity to provide input on spending priorities for Measure A funded projects, while also facilitating a transparent process by which agencies report use of Measure A funds. Competitive grant applicants will receive additional points for conducting robust outreach and engagement that exceeds the minimal requirements.

There are three types of community engagement approaches for Measure A that include information sharing, concurrent engagement, and participatory engagement, as summarized below. The type of engagement required for each project will be based on the category of funding (annual allocations, competitive grants, and maintenance funds) and the award amount for each project.

- **Information Sharing**

Information sharing is required for all Measure A funded projects. This type of engagement activity allows agencies to update their communities on the status of a project or a plan without actively seeking community feedback. This approach is typically appropriate when the agency has previously engaged the community and seeks to provide project or status updates.

- **Concurrent Engagement**

Concurrent engagement allows agencies to discuss Measure A funded projects or program matters in conjunction with other community meetings. This may include community planning sessions, regularly scheduled Council meetings, and other events that facilitate community engagement and solicit feedback on the spending priorities within a study area.

- **Participatory Engagement**

Participatory engagement includes meetings, workshops, and other events that solely discuss the priority spending of Measure A funds. These events focus entirely on parks and recreation priorities and the intended use of Measure A funds to meet the defined priorities.

VI. Future Reporting:

At its meeting held on August 8, 2018, the Arts, Entertainment and River Committee raised questions relative to the cost effectiveness of utilizing Joint Use Agreements (JUA) between the City and the Los Angeles Unified School District to address recreational needs in underserved or high density areas and whether Measure A program funds could be utilized to support the associated operational costs. Future reporting is needed to address these questions along with other needed authorities to implement and support the program beyond the areas presented in this report. Prior to receipt of Measure A funding, the program management team will meet on a regular basis to determine the appropriate means for reporting on the annual budget and reprogramming procedures. Our Office will prepare future reports to Council and the Mayor, to provide status updates, recommended changes in roles and responsibilities and requests for any additional staffing resources or additional authorities needed to properly implement and administer the new Measure A grant program.

Attachments:

- 1 – Measure A Funding Categories
- 2 – Measure A Timeline for Funding
- 3 – Measure A Timeline for Release of Competitive Grant Programs
- 4 -- Measure A Programmed Allocations by Study Area for the City of Los Angeles

RHL:JMS:05190009

Funding Categories for Measure A - Per Capita Funds		
Funding Categories	Description	Estimated Funding Available in 2019-20
Community-Based Park Investment Program	• Allocated to each Study Area using the Per Capita and Structural Improvements Formula.	\$ 33,204,270
Neighborhood Parks, Healthy Communities and Urban Green Program	• Allocated to High and Very High Need Study Areas, as identified in the most current PNA.	\$ 12,333,014
Allocation for LA County Department of Beaches and Harbors (DBH)	• DBH shall receive up to 25 percent of the total Category 3 funds as an annual allocation. • Projects should improve and protect open space, watersheds, and water resources through planning, acquisition, development, improvement, and restoration, of multi-benefit parks.	\$ 3,083,253
Allocation for LA County Department of Parks and Recreation (DPR)	• DPR shall receive up to 25 percent of the total Category 4 funds as an annual allocation. • Projects should improve and protect regional recreational facilities, trails, and accessibility.	\$ 3,083,253
County Cultural Facilities	• Up to 10 percent of the total Category 4 funds will be allocated to County-owned cultural facilities. • Projects should improve, refurbish, or enhance existing County cultural facilities or create new facilities.	\$ 1,233,301
Maintenance and Servicing Funds	• Maintenance and Servicing funds can be used to offset increased maintenance costs resulting from RPOSD-funded projects.	\$ 14,230,401

Funding Categories for Competitive Grants				
Funding Categories	Description	Grant Cycle	Estimated Funds Per Cycle	Maximum Award
Nature Lands, Local Beaches, Water Conservation and Protection Competitive Program	• Projects should improve and protect open space, watersheds, and water resources through planning, acquisition, development, improvement, and restoration, of multi-benefit parks. • Recommended targeting 30 percent of funds for projects located in High and Very High Need Study Areas.	Four Year	\$ 18,679,388	\$ 3,700,000
Regional Recreation, Multi-Use Trails & Accessibility Competitive Program	• Projects should improve and protect regional recreational facilities, trails and accessibility. • Recommended targeting 30 percent of funds for projects located in High or Very High Need Study Areas.	Four Year	\$ 14,732,820	\$ 3,100,000
Acquisition-Only Competitive Program	• Projects should acquire land with the intent to improve and protect open space, watersheds, and water resources or improve and protect regional recreational facilities, trails and accessibility. • Recommended targeting 30 percent of funds for projects located in High and Very High Need Study Areas.	Annual	\$ 2,713,283	\$ 1,000,000
Recreation Access Program	• Programs should increase the ability of residents to access public lands, park facilities, and park amenities, and may include education, interpretive services, and transportation.	Two Year	\$ 7,399,008	\$ 1,850,000
Youth and Veteran Job Training and Placement Program	• Projects should provide education and skills training or certification and job placement in the field of parks and recreation, for youths and veterans.	Three Year	\$ 10,815,105	\$ 1,400,000
Planning and Design Funds (Technical Assistance)	• Projects should include preparation work related to planning.	Annual	\$ 2,500,000	\$ 250,000

Measure A Timeline for Funding

Attachment 2

Summer /Fall 2018

RPOSD hosts Parks 103 Training --
How to apply for Measure A
Grants

RPOSD submits final report to LA
County Board of Supervisors to
adopt recommendations of the
Measure A Steering Committee

RPOSD will releases Guidelines to
Park Agencies following County
Board of Supervisors' approval

Fall/Winter 2018/19

RPOSD opens Measure A system
to Park Agencies, Local Non-
Profit Organizations and School
Districts to register with the
County

Park Agencies will begin to
submit initial Formula-based
applications

Due to Measure A litigation, the
City of Los Angeles will submit
projects and engage in limited
project planning only until
litigation is resolved

Winter/Spring 2019

RPOSD approves applications and
awards Formula-based projects
under Categories 1 & 2

Measure A Litigation

*Measure A is under legal
challenge. Plaintiff lost initial
case, and has appealed Court
ruling.*

*RPOSD has indicated that
competitive grants will not be
released unless litigation is
resolved in the County's favor*

Measure A Timeline for Release of Competitive Grant Programs

		PROGRAM	FUND CATEGORY	FREQUENCY	YEAR 1*	YEAR 2	YEAR 3	YEAR 4	YEAR 5
Capital Grants	{	Planning and Design	Categories 3 and 4	1 year	Q4 \$2,500,000	Q4 \$2,500,000	Q4 \$2,500,000	Q4 \$2,500,000	Q4 \$2,500,000
		Competitive	Categories 3 and 4	4 years	Q3 \$8,353,053				Q3 \$33,412,212
		Acquisition only	Categories 3 and 4	1 year	Q3 \$2,713,263	Q3 \$2,713,263	Q3 \$2,713,263	Q3 \$2,713,263	Q3 \$2,713,263
Programmatic Grants	{	Recreation Access	Categories 3 and 4	2 years	Q1 \$3,699,904		Q1 \$7,399,808		Q1 \$7,399,808
		Youth and Veteran Job Training and Placement	Category 5	3 years	Q2 \$3,605,035			Q2 \$10,815,105	

* Quarters are based on County Fiscal Year (July through June)

ID	Study Area Name	Council District(s)	RAP Region(s)	Population (2014)	Category 1 * Allocation (Estimate)	Category 2 * Allocation (Estimate)	Category 1 & 2 * Allocation (Estimate)
117	Arieta - Pacoima	6, (7)	Valley	105,696	\$ 293,795.00	\$ 217,155.00	\$ 510,950.00
83	Baldwin Hills - Leimert - Hyde Park	8, 10	Pacific	81,334	\$ 258,985.83	\$ 195,508.36	\$ 454,494.19
26	Bel Air - Beverly Crest/ UI Hollywood Hills	4, 5	Valley	20,667	\$ 102,404.39	\$ -	\$ 102,404.39
135	Boyle Heights	14	Metro	85,937	\$ 257,973.78	\$ 193,047.66	\$ 451,021.44
129	Brentwood - Pacific Palisades	11	Valley	58,098	\$ 248,374.19	\$ -	\$ 248,374.19
58	Canoga Park - Winnetka	3, 12	Valley	90,788	\$ 282,463.00	\$ 212,513.73	\$ 494,976.73
118	Central City	1, 9, (14)	Metro	37,968	\$ 274,808.24	\$ 224,118.52	\$ 498,926.76
59	Central City North	1, 14	Metro	22,339	\$ 95,955.13	\$ 75,124.39	\$ 171,079.52
152	Chatsworth - Porter Ranch / UI Chatsworth	3, 12	Valley	99,808	\$ 389,340.16	\$ -	\$ 389,340.16
136	Encino - Tarzana	(3), (5), 6	Valley	71,252	\$ 287,551.08	\$ -	\$ 287,551.08
164	Exposition Park - University Park - Vermont Square	1, 8, 9	Pacific	172,227	\$ 492,494.47	\$ 365,729.30	\$ 858,223.77
73	Granada Hills - Knollwood	12	Valley	62,443	\$ 203,993.44	\$ -	\$ 203,993.44
43	Harbor Gateway	15	Pacific	42,338	\$ 148,268.87	\$ 113,385.11	\$ 261,653.98
103	Hollywood - North	(4), 13	Griffith	97,252	\$ 361,478.83	\$ -	\$ 361,478.83
104	Hollywood - South	4, (5), (13)	Griffith	104,938	\$ 339,777.18	\$ 257,107.46	\$ 596,884.64
130	Mission Hills - Panorama City - North Hills	6, 7, 12	Valley	149,756	\$ 433,272.32	\$ 322,357.71	\$ 755,630.03
94	North Hollywood - Valley Village	(2), 4	Valley	140,928	\$ 445,318.22	\$ 335,799.41	\$ 781,117.63
183	Northeast Los Angeles - North	1, 13, 14	Metro/Griffith	149,095	\$ 447,806.40	\$ -	\$ 447,806.40
177	Northeast Los Angeles - South	1, 14	Metro	95,095	\$ 279,029.84	\$ -	\$ 279,029.84
60	Northridge	12	Valley	68,214	\$ 228,260.08	\$ 173,510.16	\$ 401,770.24
105	Palms - Mar Vista - Del Rey	5, (11)	Valley	112,085	\$ 362,726.43	\$ 274,452.59	\$ 637,179.02
95	Reseda - West Van Nuys	(3), 5, (6), 12	Valley	112,146	\$ 348,525.22	\$ 262,173.31	\$ 610,698.53
185	San Pedro / Port of Los Angeles / UI La Rambla	15	Pacific	83,023	\$ 259,769.79	\$ -	\$ 259,769.79
84	Sherman Oaks - Studio City / UI Universal City	2, 4	Valley	80,764	\$ 318,468.01	\$ -	\$ 318,468.01
138	Silver Lake - Echo Park - Elysian Valley	1, 4, 13	Metro/Griffith	71,783	\$ 220,766.17	\$ -	\$ 220,766.17
163	Southeast Los Angeles	8, 9, 15	Pacific	154,141	\$ 415,571.11	\$ 305,566.38	\$ 721,137.49
169	Southeast Los Angeles - North	9	Metro/Pacific	137,819	\$ 397,155.33	\$ 295,297.99	\$ 692,453.32
119	South Los Angeles	(8), 9	Metro/Pacific	109,933	\$ 310,254.35	\$ 229,880.89	\$ 540,135.24
120	Sun Valley - La Tuna Canyon	2, 6, 7	Valley	92,025	\$ 293,037.20	\$ 221,214.68	\$ 514,251.88
139	Sunland-Tujunga - Lake View Terr - Shadow Hills	7	Valley	65,031	\$ 198,859.23	\$ -	\$ 198,859.23

**MEASURE A - CITY OF LOS ANGELES
PROGRAMMED ALLOCATIONS BY STUDY AREA**

ID	Study Area Name	Council District(s)	RAP Region(s)	Population (2014)	Category 1 * Allocation (Estimate)	Category 2 * Allocation (Estimate)	Category 1 & 2 * Allocation (Estimate)
96	Sylmar	7	Valley	81,225	\$ 244,260.20	\$ -	\$ 244,260.20
61	Valley Glen - North Sherman Oaks	2, 4, 6	Valley	83,534	\$ 260,249.90	\$ 195,840.92	\$ 456,090.82
44	Van Nuys - North Sherman Oaks	4, 6	Valley	81,887	\$ 263,881.92	\$ 199,543.90	\$ 463,425.82
106	Venice	11	Valley	37,309	\$ 130,494.66	\$ 99,776.70	\$ 230,271.36
85	West Los Angeles	5, 11	Pacific	80,023	\$ 322,296.80	\$ 250,609.34	\$ 572,906.14
107	West Adams	5, 10	Pacific	97,579	\$ 288,572.34	\$ 215,445.68	\$ 504,018.02
146	West Hills - Woodland Hills/ U/ Canoga Park	(3), 12	Valley	90,301	\$ 355,340.43	\$ -	\$ 355,340.43
67	Westchester - Playa del Rey / LAX	11	Pacific	58,703	\$ 230,138.79	\$ 178,411.21	\$ 408,550.00
147	Westlake	1, 13	Metro/Griffith	114,579	\$ 335,213.66	\$ 249,844.10	\$ 585,057.76
45	Westwood / U/ Sawtelle VA Center	5, 11	Valley	53,498	\$ 185,510.46	\$ 141,683.47	\$ 327,193.93
68	Wilshire - Koreatown	1, 4, 10, 13	Metro	168,097	\$ 508,651.97	\$ 381,100.20	\$ 889,752.17
121	Wilmington - Harbor City / LA Port of LA	15	Pacific	80,814	\$ 234,339.03	\$ -	\$ 234,339.03
108	Wilshire - West	4, 5, 10	Metro	123,005	\$ 459,019.61	\$ 353,806.03	\$ 812,825.64
43	TOTALS	(Principal CD)		3,925,541	\$ 12,814,453.06	\$ 6,540,004.20	\$ 19,354,457.26

ARTS, ENTERTAINMENT, PARKS AND RIVER COMMITTEE REPORT relative to Measure A projects, fund management framework and implementation status.

Recommendations for Council action, as initiated by Motion (O'Farrell - Martinez):

1. INSTRUCT the City Administrative Officer (CAO) with the assistance of the Chief Legislative Analyst (CLA), Department of Recreation and Parks (RAP), Controller, and the City Attorney, as needed, to report with an update on the status of Measure A implementation and recommendations for establishing a framework for proper management of Measure A projects and funds.
2. INSTRUCT the RAP to report with recommendations for the following:
 - a. Community Outreach Plan and strategies from beginning to end of proposed projects.
 - b. Measure A Assessment Districts and methods by which projects can be maximized per Council District.
 - c. Schedule and timeline for Council approval.
3. DESIGNATE the RAP as the Grant Administrator for Measure A (Los Angeles County Safe, Clean Neighborhood Parks and Beaches Measure of 2016).
4. REQUEST the City Attorney to prepare and present an Ordinance amending the Los Angeles Administrative Code to establish the Special Funds that are necessary for receipt of funds under the various funding categories that will be provided through Measure A.
5. INSTRUCT the CAO to ensure that their forthcoming report proposing a framework for Measure A implementation includes substantive community outreach to identify priority projects, and Council input and formal approval of all projects proposed for Measure A funding.
6. INSTRUCT the RAP to combine the Council-approved instructions from Council file No. 16-0841 regarding joint-use and Measure A, into future report backs on Council file No. 18-0611 and add joint use agreements as a high priority for Measure A project criteria.

Fiscal Impact Statement: Neither the CAO nor the CLA has completed a financial analysis of this report.

Community Impact Statement: None submitted.

Summary:

At the meeting held August 8, 2018, your Arts, Entertainment, Parks and River Committee considered Motion (O'Farrell - Martinez) relative to Measure A projects, fund management framework and implementation status. The Motion attached to the Council file, includes some

background on the matter.

After an opportunity for public comment was held, the Committee moved to approve the recommendations contained in the Motion with the amendments as reflected above. This matter is now forwarded to the City Council for its consideration.

Respectfully Submitted,

ARTS, ENTERTAINMENT, PARKS AND RIVER COMMITTEE

<u>MEMBER</u>	<u>VOTE</u>
O'FARRELL:	YES
RYAN:	YES
PRICE:	YES

18-0811_rpt_sepr_8-8-18



-NOT OFFICIAL UNTIL COUNCIL ACTS-

MOTION

ARTS, ENTERTAINMENT, PARKS, AND RIVER

On November 2, 2016, nearly 75 percent of Los Angeles County voters voting in that election overwhelmingly endorsed Measure A, a parcel tax that will generate significant annual funding for the acquisition, improvement, restoration and maintenance of parks, recreational, cultural and community facilities, beaches, and open space lands.

All funds raised under Measure A will be allocated through processes to be established by the Los Angeles County Regional Parks and Open Space District. Through Measure A, the City of Los Angeles expects to receive approximately \$22.4 million dollars annually to address the City's park and open space needs, through formula-based annual allocations, and may receive more through various Measure A competitive grant cycles.

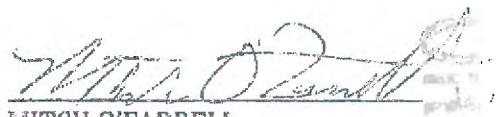
In order to receive and expend these funds, the City must designate a City department as the lead agency. Prior to doing so, the City Council should be given the opportunity to review the proposed structure for proper accounting of Measure A receipts and expenditures.

I THEREFORE MOVE that the City Council instruct the City Administrative Officer, with the assistance of the Chief Legislative Analyst, Department of Recreation and Parks, Controller, and the City Attorney, as needed, to report with an update on the status of Measure A implementation and recommendations for establishing a framework for proper management of Measure A projects and funds.

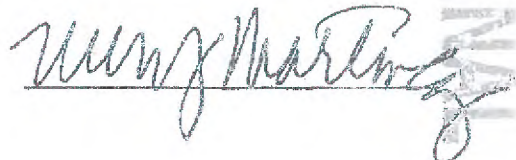
I FURTHER MOVE that the City Council instruct the Department of Recreation and Parks to report with recommendations on:

- A Community Outreach Plan and strategies from beginning to end of proposed projects;
- Measure A Assessment Districts and methods by which projects can be maximized per Council District; and
- Schedule and timeline for Council approval.

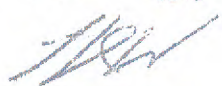
PRESENTED BY:


MITCH O'FARRELL
Councilmember 13th District

SECONDED BY:



JUN 22 2018



MEASURE A PROPOSED PARK IMPROVEMENT PLAN BUDGET

Study Area Name	Study Area ID	CD	Park Name	High and/or Very High Needs Study Area	YR 1 Fiscal Year 2018-19 (Actual)	YR 2 Fiscal Year 2019-20 (Estimated)	YR 3 Fiscal Year 2020-21 (Estimated)	Proposed Park Improvement Budget Amount (Est.)
Arlington - Pacoima	117	7	Roger W. Jessup Park	Yes	\$486,670.10	\$486,670.10	\$486,670.10	\$1,460,010.30
Baldwin Hills - Leimert - Hyde Park	83	8	Angeles Mesa Park	Yes	\$432,896.97	\$0.00	\$0.00	\$432,896.97
Baldwin Hills - Leimert - Hyde Park	83	10	Leimert Plaza Park	Yes	\$0.00	\$432,896.97	\$432,896.97	\$865,793.94
Bel Air - Beverly Crest / UN Hollywood Hills	26	4	Laurel Canyon Dog Park	No	\$97,538.11	\$0.00	\$0.00	\$97,538.11
Bel Air - Beverly Crest / UN Hollywood Hills	26	5	Briarwood Park	No	\$0.00	\$97,538.11	\$97,538.11	\$195,076.22
Boyle Heights	135	14	Hollenbeck Park	Yes	\$429,589.25	\$0.00	\$0.00	\$429,589.25
Boyle Heights	135	14	State Street Recreation Center	Yes	\$0.00	\$429,589.25	\$429,589.25	\$859,178.50
Brentwood - Pacific Palisades	129	11	Crestwood Hills Park	No	\$236,571.64	\$236,571.64	\$0.00	\$473,143.28
Brentwood - Pacific Palisades	129	11	Rustic Canyon Park	No	\$0.00	\$0.00	\$236,571.64	\$236,571.64
Canoga Park - Winnetka	58	3	Canoga Park Senior Citizen Center	Yes	\$471,455.82	\$471,455.82	\$0.00	\$942,911.64
Canoga Park - Winnetka	58	3	Lanark Recreation Center	Yes	\$0.00	\$0.00	\$471,455.82	\$471,455.82
Central City	118	14	First and Broadway Park	Yes	\$475,218.14	\$475,218.14	\$0.00	\$950,436.28
Central City	118	14	San Julian Park	Yes	\$0.00	\$0.00	\$475,218.14	\$475,218.14
Central City North	59	1	Alpine Recreation Center	Yes	\$162,949.95	\$162,949.95	\$162,949.95	\$488,849.85
Chatsworth - Porter Ranch / UI Chatworth	152	3	Parthenia Park	No	\$370,839.01	\$0.00	\$0.00	\$370,839.01
Chatsworth - Porter Ranch / UI Chatworth	152	12	Chatsworth Park North	No	\$0.00	\$370,839.01	\$370,839.01	\$741,678.02
Encino - Tarzana	136	3	Tarzana Recreation Center	No	\$273,866.87	\$273,866.87	\$273,866.87	\$821,600.61
Exposition Park - University Park - Vermont Square	164	1	Normandie Recreation Center	Yes	\$0.00	\$817,441.62	\$0.00	\$817,441.62
Exposition Park - University Park - Vermont Square	164	8	Loren Miller Recreation Center	Yes	\$817,441.62	\$0.00	\$0.00	\$817,441.62
Exposition Park - University Park - Vermont Square	164	9	Abmanson Senior Center	Yes	\$0.00	\$0.00	\$817,441.62	\$817,441.62
Granada Hills - Knollwood	73	12	Granada Hills Park	No	\$194,299.83	\$194,299.83	\$194,299.83	\$582,899.49
Harbor Gateway	43	15	Normandale Recreation Center	Yes	\$249,220.38	\$249,220.38	\$249,220.38	\$747,661.14
Hollywood - North	103	13	Yucca Park Community Center	No	\$344,301.63	\$344,301.63	\$344,301.63	\$1,032,904.89
Hollywood - South	104	5	Fairfax Senior Citizen Center	Yes	\$568,521.14	\$0.00	\$0.00	\$568,521.14
Hollywood - South	104	13	Lemon Grove Recreation Center	Yes	\$0.00	\$568,521.14	\$568,521.14	\$1,137,042.28
Mission Hills - Panorama City - North Hills	130	6	Panorama City Recreation Center	Yes	\$0.00	\$719,723.06	\$719,723.06	\$1,439,446.12
Mission Hills - Panorama City - North Hills	130	7	Brand Park	Yes	\$719,723.06	\$0.00	\$0.00	\$719,723.06
North Hollywood - Valley Village	94	2	Valley Plaza Park	Yes	\$743,999.51	\$0.00	\$0.00	\$743,999.51
North Hollywood - Valley Village	94	2	Valley Plaza Park - Whitsett Sports	Yes	\$0.00	\$743,999.51	\$0.00	\$743,999.51
North Hollywood - Valley Village	94	2	North Hollywood Park	Yes	\$0.00	\$0.00	\$743,999.51	\$743,999.51
Northeast Los Angeles - North	183	1	Sycamore Grove Park	No	\$426,526.98	\$0.00	\$0.00	\$426,526.98
Northeast Los Angeles - North	183	13	Chevy Chase Park - Recreation Center	No	\$0.00	\$426,526.98	\$0.00	\$426,526.98
Northeast Los Angeles - North	183	13	Juntos Park	No	\$0.00	\$0.00	\$426,526.98	\$426,526.98
Northeast Los Angeles - South	177	1	Lincoln Heights Recreation Center	No	\$265,770.55	\$0.00	\$0.00	\$265,770.55
Northeast Los Angeles - South	177	1	Lincoln Park	No	\$0.00	\$265,770.55	\$265,770.55	\$531,541.10
Northridge	60	12	Northridge Recreation Center	Yes	\$382,678.42	\$382,678.42	\$0.00	\$765,356.84
Northridge	60	12	Vanalden Park - Senior Center	Yes	\$0.00	\$0.00	\$382,678.42	\$382,678.42
Palms - Mar Vista - Del Rey	105	11	Culver Slauson Recreation Center	Yes	\$0.00	\$0.00	\$606,900.76	\$606,900.76
Palms - Mar Vista - Del Rey	105	11	Mar Vista Recreation Center	Yes	\$606,900.76	\$606,900.76	\$0.00	\$1,213,801.52
Reseda - West Van Nuys	95	3	Reseda Park	Yes	\$581,678.61	\$0.00	\$0.00	\$581,678.61
Reseda - West Van Nuys	95	6	Jesse Owens Mini Park	Yes	\$0.00	\$0.00	\$581,678.61	\$581,678.61
Reseda - West Van Nuys	95	6	Louise Park	Yes	\$0.00	\$581,678.61	\$0.00	\$581,678.61
San Pedro / Port of Los Angeles / UI La Rambla	185	15	Martin J. Bogdanovich Recreation Center	No	\$247,425.73	\$0.00	\$0.00	\$247,425.73
San Pedro / Port of Los Angeles / UI La Rambla	185	15	Peck Park Pool	No	\$0.00	\$247,425.73	\$247,425.73	\$494,851.46
Sherman Oaks - Studio City / UI Universal City	84	2	South Weddington Park	No	\$0.00	\$303,334.65	\$0.00	\$303,334.65
Sherman Oaks - Studio City / UI Universal City	84	2	North Weddington Recreation Center	No	\$0.00	\$0.00	\$303,334.65	\$303,334.65
Sherman Oaks - Studio City / UI Universal City	84	2	Woodbridge Park	No	\$303,334.65	\$0.00	\$0.00	\$303,334.65

Notes:

1. This table only includes Measure A Annual Allocations under Categories 1 & 2 of the Measure A Program, only.
2. Values shown are estimated available Measure A funding in FY2019-20 and FY2020-21.

MEASURE A PROPOSED PARK IMPROVEMENT PLAN BUDGET

Study Area Name	Study Area ID	CD	Park Name	High and/or Very High Woods Study Area	Fiscal Year 2018-19 (Actual)	Fiscal Year 2019-20 (Estimated)	Fiscal Year 2020-21 (Estimated)	Proposed Park Improvement Budget Amount (Est.)
Silver Lake - Echo Park - Blystan Valley	138	13	Echo Park Lake	No	\$0.00	\$210,275.53	\$210,275.53	\$420,551.06
Silver Lake - Echo Park - Blystan Valley	138	13	Echo Park Recreation Center	No	\$210,275.53	\$0.00	\$0.00	\$210,275.53
South Los Angeles	119	8	Mount Carmel	Yes	\$0.00	\$0.00	\$514,468.43	\$514,468.43
South Los Angeles	119	8	Saint Andrews Recreation Center	Yes	\$514,468.43	\$514,468.43	\$0.00	\$1,028,936.86
Southeast Los Angeles	163	15	109th Street Recreation Center	Yes	\$686,869.58	\$686,869.58	\$0.00	\$1,373,739.16
Southeast Los Angeles	163	15	Watts Senior Citizen Center	Yes	\$0.00	\$0.00	\$686,869.58	\$686,869.58
Southeast Los Angeles - North	169	9	Central Avenue Jazz Park	Yes	\$659,548.46	\$0.00	\$0.00	\$659,548.46
Southeast Los Angeles - North	169	9	Trinity Recreation Center	Yes	\$0.00	\$659,548.46	\$0.00	\$659,548.46
Southeast Los Angeles - North	169	9	Gilbert Lindsay Recreation Center	Yes	\$0.00	\$0.00	\$659,548.46	\$659,548.46
Sun Valley - La Tuna Canyon	120	6	Sun Valley Park	Yes	\$489,815.02	\$0.00	\$0.00	\$489,815.02
Sun Valley - La Tuna Canyon	120	7	Stonehurst Recreation Center	Yes	\$0.00	\$489,815.02	\$489,815.02	\$979,630.04
Sunland - Tujunga - Lake View Terr - Shadow Hills	139	7	Lakeview Terrace Recreation Center	No	\$189,409.59	\$189,409.59	\$189,409.59	\$568,228.77
Sylmar	96	7	Telfair Park	No	\$232,653.14	\$232,653.14	\$0.00	\$465,306.28
Sylmar	96	7	Carey Ranch Park	No	\$0.00	\$0.00	\$232,653.14	\$232,653.14
Valley Glen - North Sherman Oaks	61	2	Van Nuys Recreation Center	Yes	\$0.00	\$0.00	\$434,417.73	\$434,417.73
Valley Glen - North Sherman Oaks	61	4	Van Nuys Sherman Oaks RC	Yes	\$434,417.73	\$434,417.73	\$0.00	\$868,835.46
Van Nuys - North Sherman Oaks	44	6	Delano Recreation Center	Yes	\$441,404.17	\$441,404.17	\$441,404.17	\$1,324,212.51
Venice	106	11	Penmar Recreation Center	Yes	\$0.00	\$219,329.05	\$219,329.05	\$438,658.10
Venice	106	11	Venice Beach - Rose Ave site	Yes	\$219,329.05	\$0.00	\$0.00	\$219,329.05
West Adam	107	10	Vineyard Recreation Center	Yes	\$480,067.46	\$0.00	\$0.00	\$480,067.46
West Adam	107	10	Vineyard Recreation Center / Senior Center	Yes	\$0.00	\$480,067.46	\$480,067.46	\$960,134.92
West Hills - Woodland Hills / UI Canoga Park	146	12	Knapp Ranch Park	No	\$0.00	\$338,454.92	\$0.00	\$338,454.92
West Hills - Woodland Hills / UI Canoga Park	146	12	Castle Peak Park	No	\$338,454.92	\$0.00	\$0.00	\$338,454.92
West Hills - Woodland Hills / UI Canoga Park	146	12	Mae Boyar Recreation Center	No	\$0.00	\$0.00	\$338,454.92	\$338,454.92
West Los Angeles	85	5	Palms Recreation Center	Yes	\$545,682.08	\$0.00	\$0.00	\$545,682.08
West Los Angeles	85	11	Felicia Mahood Multipurpose Center	Yes	\$0.00	\$545,682.08	\$545,682.08	\$1,091,364.16
Westchester - Playa del Rey / LAX	67	11	Del Rey Lagoon	Yes	\$389,136.01	\$0.00	\$0.00	\$389,136.01
Westchester - Playa del Rey / LAX	67	11	Triangle Park	Yes	\$0.00	\$389,136.01	\$0.00	\$389,136.01
Westchester - Playa del Rey / LAX	67	11	Westchester Recreation Center - Old Gym	Yes	\$0.00	\$0.00	\$389,136.01	\$389,136.01
Westlake	147	1	Alvarado Terrace Park	Yes	\$557,256.26	\$0.00	\$0.00	\$557,256.26
Westlake	147	1	Hope and Peace Park	Yes	\$0.00	\$0.00	\$557,256.26	\$557,256.26
Westlake	147	13	Lake Street Park	Yes	\$0.00	\$557,256.26	\$0.00	\$557,256.26
Westwood / UI Sawtelle	45	5	Westwood Park	Yes	\$311,645.91	\$311,645.91	\$311,645.91	\$934,937.73
Wilmington - Harbor City / LA Port of LA	121	15	Wilmington Recreation Center	No	\$223,203.41	\$223,203.41	\$223,203.41	\$669,610.23
Wilshire - Koreatown	68	10	Seoul International Park	Yes	\$847,471.81	\$847,471.81	\$847,471.81	\$2,542,415.43
Wilshire - West	108	4	Pan Pacific Park Pool	Yes	\$0.00	\$474,200.78	\$774,200.78	\$1,248,401.56
Wilshire - West	108	4	Robert Burns Park	Yes	\$0.00	\$300,000.00	\$0.00	\$300,000.00
Wilshire - West	108	10	Queen Anne Recreation Center	Yes	\$774,200.78	\$0.00	\$0.00	\$774,200.78
Totals					\$18,434,728.07	\$18,434,728.07	\$18,434,728.07	\$55,304,184.21

Notes:

1. This table only includes Measure A Annual Allocations under Categories 1 & 2 of the Measure A Program, only.
2. Values shown are estimated available Measure A funding in FY2019-20 and FY2020-21.

MEASURE A PROPOSED PARK IMPROVEMENT PLAN BUDGET

Study Area Name	Study Area ID	CD	Park Name	High and/or Very High Needs Study Area	YR 1 Fiscal Year 2018-19 (Actual)	YR 2 Fiscal Year 2019-20 (Estimated)	YR 3 Fiscal Year 2020-21 (Estimated)	Proposed Park Improvement Budget Amount (Est.)
-----------------	---------------	----	-----------	--	---	--	--	--

Measure A FY2019-21 Proposed Park Improvement Plan Breakdown by Council District

CD	Amount	No of Park Projects	No. of High/Very High Needs Study Areas	% H/VR Need
1	\$ 3,644,642.62	7	4	57.1%
2	\$ 3,576,420.21	7	4	57.1%
3	\$ 3,188,485.69	5	3	60.0%
4	\$ 2,514,775.13	4	3	75.0%
5	\$ 2,244,217.17	4	3	75.0%
6	\$ 4,416,890.87	5	5	100.0%
7	\$ 4,425,551.59	6	3	50.0%
8	\$ 2,793,743.88	4	4	100.0%
9	\$ 2,796,087.00	4	4	100.0%
10	\$ 5,622,612.53	5	5	100.0%
11	\$ 5,447,176.54	10	8	80.0%
12	\$ 3,487,977.53	7	2	28.6%
13	\$ 4,211,083.98	7	2	28.6%
14	\$ 2,714,422.17	4	4	100.0%
15	\$ 4,220,157.30	6	3	50.0%
Totals	\$ 55,304,184.21	85	57	67.1%

Notes:

1. This table only includes Measure A Annual Allocations under Categories 1 & 2 of the Measure A Program, only.
2. Values shown are estimated available Measure A funding in FY2019-20 and FY2020-21.

HOLLY L. WOLCOTT
CITY CLERK

SHANNON D. HOPPE
EXECUTIVE OFFICER

When making inquiries relative to
this matter, please refer to the
Council File No.: **18-1167**

City of Los Angeles
CALIFORNIA



ERIC GARCETTI
MAYOR

Attachment No. 6

OFFICE OF THE
CITY CLERK

Council and Public Services Division

200 N. SPRING STREET, ROOM 395
LOS ANGELES, CA 90012
GENERAL INFORMATION - (213) 978-1133
FAX: (213) 978-1040

PATRICE Y. LATTIMORE
DIVISION MANAGER

CLERK.LACITY.ORG

OFFICIAL ACTION OF THE LOS ANGELES CITY COUNCIL

January 25, 2019

Council File No.: **18-1167**

Council Meeting Date: January 23, 2019

Agenda Item No.: 11

Agenda Description: PERSONNEL AND ANIMAL WELFARE COMMITTEE REPORT relative to the exemption of three Project Coordinator (Class Code 1537) and three Senior Project Coordinator (Class Code 1538) positions for the Department of Recreation and Parks (RAP) from the Civil Service provisions of the City Charter.

Council Action: PERSONNEL AND ANIMAL WELFARE COMMITTEE REPORT - ADOPTED

Council Vote:	YES	BOB BLUMENFIELD
	YES	MIKE BONIN
	YES	JOE BUSCAINO
	ABSENT	GILBERT A. CEDILLO
	YES	MARQUEECE HARRIS-DAWSON
	ABSENT	JOSE HUIZAR
	YES	PAUL KORETZ
	ABSENT	PAUL KREKORIAN
	YES	NURY MARTINEZ
	YES	MITCH O'FARRELL
	YES	CURREN D. PRICE
	YES	MONICA RODRIGUEZ
	ABSENT	DAVID RYU
	YES	GREIG SMITH
	YES	HERB WESSON

HOLLY L. WOLCOTT
CITY CLERK

Adopted Report(s)

Title

Report from Personnel and Animal Welfare Committee

Date

01/16/2019

PERSONNEL AND ANIMAL WELFARE COMMITTEE REPORT relative to the exemption of three Project Coordinator (Class Code 1537) and three Senior Project Coordinator (Class Code 1538) positions for the Department of Recreation and Parks (RAP) from the Civil Service provisions of the City Charter.

Recommendation for Council action:

APPROVE the exemption of three Project Coordinator (Class Code 1537) and three Senior Project Coordinator (Class Code 1538) positions for the RAP from the Civil Service provisions of the City Charter pursuant to Charter Section 1001(d)(4).

Fiscal Impact Statement: None submitted by the RAP. Neither the City Administrative Officer nor the Chief Legislative Analyst has completed a financial analysis of this report.

Community Impact Statement: None submitted.

Summary:

On January 16, 2019, your Committee considered a December 3, 2018 RAP report relative to the exemption of three Project Coordinator (Class Code 1537) and three Senior Project Coordinator (Class Code 1538) positions for the RAP from the Civil Service pursuant to Charter Section 1001(d)(4). According to the RAP, on September 5, 2018, the Board of Recreation and Park Commissioners established these six positions in RAP's Department Personnel Resolution. The positions will be assigned to perform a wide scope of grant administrative work in support of RAP park projects funded by Measure A and Proposition 68. Subsequently, on November 15, 2018, the Board of Civil Service Commissioners approved the exemption of the positions from civil service pursuant to Charter Section 1001(d)(4) is appropriate as the positions will be grant-funded. After consideration and having provided an opportunity for public comment, the Committee moved to recommend approval of the position exemption as detailed in the above recommendation. This matter is now submitted to Council for its consideration.

Respectfully Submitted,

PERSONNEL AND ANIMAL WELFARE COMMITTEE



MEMBER VOTE

KORETZ: YES

SMITH: YES

PRICE: YES

ARL

1/16/19

-NOT OFFICIAL UNTIL COUNCIL ACTS-

**DEPARTMENT OF RECREATION
AND PARKS**

BOARD OF COMMISSIONERS

SYLVIA PATSAOURAS
PRESIDENT

LYNN ALVAREZ
VICE PRESIDENT

MELBA CULPEPPER
PILAR DIAZ
JOSEPH HALPER

IRIS L. DAVIS
BOARD SECRETARY (213) 202-2640

CITY OF LOS ANGELES
CALIFORNIA



ERIC GARCETTI
MAYOR

MICHAEL A. SHULL
GENERAL MANAGER

ANTHONY-PAUL (AP) DIAZ, ESQ.
EXECUTIVE OFFICER &
CHIEF OF STAFF

RAMON BARAJAS
ASSISTANT GENERAL MANAGER

VICKI ISRAEL
ASSISTANT GENERAL MANAGER

SOPHIA PIÑA-CORTEZ
ASSISTANT GENERAL MANAGER
(213) 202-2633 FAX (213) 202-2614

December 3, 2018

Honorable City Council
c/o City Clerk
City Hall, Room 395
Los Angeles, CA 90012
Attn: Adam Lid, Legislative Assistant

RE: EXEMPTION FROM CIVIL SERVICE PURSUANT TO CHARTER § 1001(d)(4)

The Department of Recreation and Parks (RAP) respectfully requests three (3) positions of Project Coordinator, Code 1537, and three (3) positions of Senior Project Coordinator, Code 1538, be exempted from civil service pursuant to Charter § 1001(d)(4).

On September 5, 2018, the Board of Recreation and Park Commissioners established these six (6) positions in RAP's Department Personnel Resolution. The positions will be assigned to perform a wide scope of grant administrative work in support of RAP park projects funded by Measure A and Proposition 68. On November 15, 2018, the Board of Civil Service Commissioners approved the exemption of the positions. The exemption of the six (6) positions from civil service pursuant to Charter § 1001(d)(4) is appropriate as the positions will be grant-funded.

Please contact Director of Human Resources Harold T. Fujita at (213) 202-3220 should you require additional information related to this request.

Sincerely,


MICHAEL A. SHULL

MAS:HF

cc: Anthony-Paul Diaz, RAP Chief of Staff and Executive Officer
Noel Williams, RAP Chief Financial Officer
Harold Fujita, RAP Director of Human Resources



J6 (PK)
1-22-19
3:12 PM

TA as part
of an overall
agreement

**Memorandum of Understanding
Between
United Teachers Los Angeles and Los Angeles Unified School District
Pilot Program - Green Spaces**

The Los Angeles Unified School District shall create a Green Space Task Force that includes representatives from LAUSD, UTLA, and the City of Los Angeles. The task force shall be charged with creation of a plan to be presented to the Board of Education no later than December 1, 2019. The task force shall be tasked with creating a plan to increase green space, as defined in LAUSD's school design guide for all new projects (unless prohibited by law). The parties are in agreement that school greening projects enrich and strengthen our campus environments.

The District will work with UTLA, the City of Los Angeles, the County of Los Angeles, and appropriate nonprofit partners in an effort to create to the maximum extent possible, adequate green space for student physical activity.

In creating a task force plan, green space shall be studied in order of priority as follows:

- a. Schools without any existing green space and not located near parks
- b. Schools without any existing green space
- c. Schools with small amounts of green space and communities with limited to no access to parks and recreation

LAUSD shall enter into any and all agreements with the City of Los Angeles, County of Los Angeles, and/or State of California (as permitted by law) necessary to secure funding from available sources, such as Proposition K (LA City parks measure), Proposition A (LA County parks measure), Proposition W (LA County stormwater measure) to create the above green space consistent with any plan adopted by the Board of Education.

The Facilities Services Division shall continue with the goals as listed in the Strategic Execution Plan that involves the removal of unused bungalows.

LAUSD staff shall report to the Board of Education annually on the progress towards creating green space as well as compliance with the Rodriguez Consent Decree.

Allocation Calendars

FOR CITIES, LOS ANGELES COUNTY DPR, LOS ANGELES COUNTY DBH; AGENCIES WITH RPOSD-FUNDED PROJECTS ELIGIBLE FOR M&S

For the following programs:

- Community-Based Park Investment Program
- Safe, Clean Neighborhood Parks, Healthy Communities, and Urban Greening Program
- Natural Lands, Open Spaces and Local Beaches, Water Conservation, and Watershed Protection Program: Department of Beaches and Harbors (DBH) allocation
- Regional Recreation Facilities, Multi-use Trails and Accessibility Program: Department of Parks and Recreation (DPR) allocation
- Maintenance and Servicing (M&S)

2018 Annual Allocation Calendar

MAY JUNE JULY AUGUST SEPTEMBER OCTOBER NOVEMBER DECEMBER

Enrollment:

Opens May 1, 2018

Application:

Applications Available July 1, 2018

Grant Award Notification:

Within 6 to 8 weeks of submitting completed application

Processing of documents received between December 1 and December 31 may be delayed due to staff capacity.

Ongoing Annual Allocation Calendar

JANUARY FEBRUARY MARCH APRIL MAY JUNE JULY AUGUST SEPTEMBER OCTOBER NOVEMBER DECEMBER

Enrollment

Enrollment documents always accepted. Eligibility notification sent within 6 to 8 weeks of completing enrollment.

Application

Applications always accepted once eligibility is confirmed.

Grant Award Notification:

Within 6 to 8 weeks of submitting completed application.

June/July Blackout Period: Payment request documents are not processed between June 7 and July 7. Processing of payment documents received after June 7 will begin on July 8.

Processing of documents received between December 1 and December 31 may be delayed due to staff capacity.



DRAFT - NOVEMBER 30, 2017

Competitive Grants Calendar

**OPEN TO ELIGIBLE GOVERNMENT AGENCIES, SPECIAL DISTRICTS,
JOINT POWERS AUTHORITIES, NONPROFIT ORGANIZATIONS, AND SCHOOLS**

For the following programs:

- General Competitive Grants
- Cultural Facilities Grants
- Recreation Access Grants
- Youth and Veteran Grants

COMPETITIVE GRANT PROGRAM CALENDAR

PROGRAM	FUND CATEGORY	FREQUENCY	2019	2020	2021	2022	2023	2024	2025	2026	2027	2028	2029	2030	2031
General	Category 3 and 4	4 years	Q3 \$13,566,316				Q3 \$54,265,264				Q3 \$54,265,264				Q3 \$54,265,264
Recreation Access	Category 3 and 4	2 years	Q1 \$3,699,904		Q1 \$7,399,808		Q1 \$7,399,808		Q1 \$7,399,808		Q1 \$7,399,808		Q1 \$7,399,808		Q1 \$7,399,808
Youth and Veteran	Category 5	3 years	Q2 \$3,605,035			Q2 \$10,815,105			Q2 \$10,815,105			Q2 \$10,815,105			Q2 \$10,815,105
Cultural Facilities	Category 6	5 years			Q2 \$3,699,903			Q2 \$3,699,903			Q2 \$3,699,903			Q2 \$3,699,903	

Q = Calendar quarter when grant application is due

\$ = Total estimated amount of funds available during grant period



DRAFT - NOVEMBER 30, 2017



Engagement Approaches & Requirements

Information Sharing

This approach allows agencies to update their communities on the status of a project or a plan without actively seeking community feedback.

This approach is most appropriate when agencies have previously engaged the community and seek to provide updates throughout the duration of the project.

Information sharing methods should be appropriate in accessibility and visibility to the particular community.

This approach may be required at various stages of the grant administration process.

Concurrent Engagement

This approach allows agencies to discuss Measure A-funded projects and plans in conjunction with other community meetings.

This may include meetings scheduled around community plans, regularly scheduled council meetings, or other events that aim to engage the community and solicit feedback pertaining to spending priorities within a Study Area.

Concurrent engagement methods should be appropriate in scale and type to the particular community.

Depending on project cost, this approach may be required before or after submission of the grant application.

Participatory Engagement

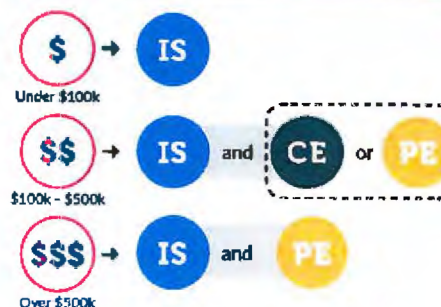
This approach includes meetings, workshops, and other events that solely discuss priority spending of Measure A funds. These events focus entirely on parks and recreation priorities and how Measure A funds should be directed to those priorities.

Meetings must intentionally engage the community and solicit meaningful feedback. Participatory engagement methods should be appropriate in scale and type to the particular community.

Depending on project cost, this approach must be used either before and/or after submission of the grant application.

Find your grant type and award size to determine minimum community engagement requirements:

Annual Allocations*



*Applies to all annual allocations, including Categories 1 and 2, as well as Category 3 Department of Beaches and Harbor (DBH) and Category 4 Department of Parks and Recreation (DPR).

Competitive Grants**

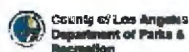


** Does not apply to programmatic competitive grants such as Recreation Access (Category 3 and 4) and Category 5 Youth and Veteran grants.

Maintenance & Servicing (M&S) Funds



- IS Information Sharing Approach
- CE Concurrent Engagement Approach
- PE Participatory Engagement Approach
- x2 Engagement Approach to be Completed at Two Separate Times Before or After the Grant Award
- Total Grant Amount Withdrawn for the Year (for Annual Allocations and M&S Funds) OR Project's Requested Grant Award Size by Award Bracket (for Competitive Grants)



Tell us how to spend money on our parks -- make your voice heard at a Community meeting!

This park is my yoga studio

Facebook Ad

- Social Media
- Newsletters



Pop-up Outreach

- Community Events
- City/Neighborhood Council Meetings



Community Workshop

- Workshops
- Town Hall Meetings