

BOARD OF PUBLIC WORKS
MEMBERS

KEVIN JAMES
PRESIDENT

VACANT
VICE PRESIDENT

MICHAEL R. DAVIS
PRESIDENT PRO TEMPORE

JOEL F. JACINTO
COMMISSIONER

AURA GARCÍA
COMMISSIONER

CITY OF LOS ANGELES

CALIFORNIA



ERIC GARCETTI
MAYOR

OFFICE OF THE
BOARD OF PUBLIC WORKS

DR. FERNANDO CAMPOS
EXECUTIVE OFFICER

200 NORTH SPRING STREET
ROOM 361, CITY HALL
LOS ANGELES, CA 90012

TEL: (213) 978-0261
TDD: (213) 978-2310
FAX: (213) 978-0278

<http://bpw.lacity.org>

March 13, 2019

Council Hearing – 3/20/2019
Council File No. 18-0900-S119

City Council
Room No. 395
City Hall

Honorable Members:

SUBJECT: ASSESSMENT HEARING # 1 – 6TH STREET AND HARBOR BOULEVARD

Inasmuch as no one protested the assessments pursuant to the hearing scheduled this date, in connection with the maintenance for Main Street and Roundabout Street - Street Lighting Maintenance Assessment District, the Board of Public Works recommends that the assessments therefore be confirmed.

Sincerely,

DR. FERNANDO CAMPOS,
Executive Officer, Board of Public Works

FC:CH

CC: Director, Bureau of Street Lighting



DATE NOV 30 2018

C.D. 15

Honorable City Council
of the City of Los Angeles

**6TH STREET AND HARBOR BOULEVARD
STREET LIGHTING MAINTENANCE ASSESSMENT DISTRICT**

This report submits the proposed Ordinance of Intention to institute maintenance assessment proceedings for the above street lighting project.

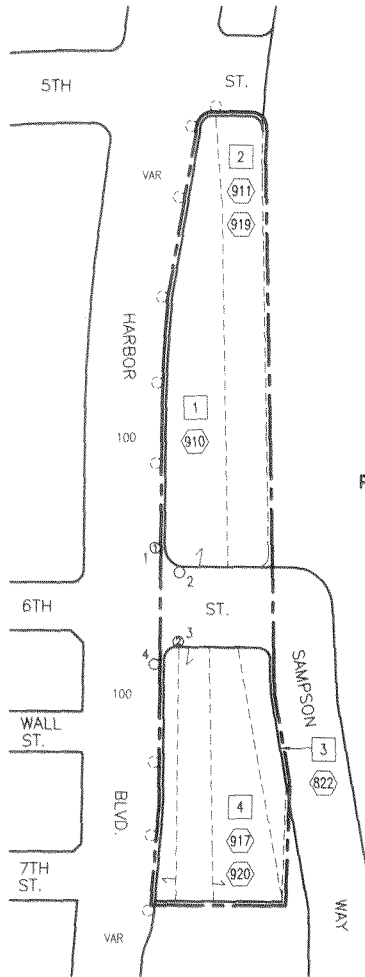
RECOMMENDATIONS

1. Council adopt this report and the Ordinance of Intention, and that the proceedings be conducted in accordance with Sections 6.95 - 6.127 of the Los Angeles Administrative Code, Section 53753 of the California Government Code, and Proposition 218 (Articles XIII C and XIII D of the California Constitution). This includes Council holding a Public Hearing for the proposed District Diagram with City page number 15161.
2. Upon Council adoption of the Ordinance of Intention, the Bureau of Street Lighting be instructed to: Mail notices of the assessment ballot proceedings, and Mail assessment ballots (as required by Prop. 218) to the property owners in the lighting district.
3. Upon completion of Item 2 above, the City Clerk be instructed to conduct the assessment ballot proceedings (i.e. count, certify, and report the results of the assessment ballot proceedings to the Council).
4. Following the conclusion of the final public hearing, if a project has weighted "YES" votes equal to, or in excess of weighted "NO" votes, the Council shall deny the appeals, confirm the maintenance assessments, and adopt the Final Ordinance levying the assessments. If the weighted "NO" votes are in excess of weighted "YES" votes, Council will abandon the lighting district and proceedings in accordance with Proposition 218; and the affected street lighting system shall be removed from service or not be constructed.
5. A copy of this report be provided to each affected Council office and the Mayor's Office of Economic Development.

LAND USE METHOD



SCALE
1"=100'



7440-30
PORT OF LOS ANGELES

PRIOR TO THE FOLLOWING DATES, THE LISTED PARCELS WERE ASSESSED UNDER THE REFERENCE NUMBERS AS SHOWN:

DATE	PARCEL NO.	PREVIOUS REFERENCE DIST.	PAGE	PARCEL

COUNCIL DISTRICT NO. 15
PROJECT ID NO. 4901

7440	30
C.M.B.	Page(s)

DISTRICT OUTLINED BY: *Jangson*
DISTRICT CHECKED BY: *Ruben Flamenco*
APPROVED: *November 26*, 2018

Norma Isahakian, Executive Director
Bureau of Street Lighting
By: *Ruben Flamenco* for Engineer

in Serv.	Date	By	D.M.	0158201
Drawn	11-13-18	A.T.	W.D.	Plan
Checked	11-20-18	L.O.	BR600517	
Thomas Guide Page	397	Page	824	Grid
			C-5	Sheet No.

MAINTENANCE ASSESSMENT DIAGRAM
FOR PROPOSITION 21B REQUIREMENTS
SHOWING LOCATION OF ELECTROLIERS AND THE
EXTENT OF THE TERRITORY INCLUDED WITHIN THE
ASSESSMENT DISTRICT

FOR THE FURNISHING OF ELECTRIC ENERGY & MAINTENANCE FOR
THE LIGHTING OF SAID DISTRICT IN THE CITY OF LOS ANGELES
NORMA ISAHAKIAN, EXECUTIVE DIRECTOR - BUREAU OF STREET LIGHTING
THE EXTERIOR BOUNDARIES OF THE ASSESSMENT DISTRICT ARE SHOWN

- ① Indicates L.A. County APN
- ⑦ Indicates L.A. City Assessment Number
- ⊙ Indicates New Electrolier CD 653C 200W EQ .B.Z. 3
- ⊙ Indicates New Electrolier CAL TYPE C-2-100 200W EQ .B.Z. 3
- ⊙ Indicates New Electrolier CAL TYPE 17-3-100 200W EQ .B.Z. 3
- ⊙ Indicates New Electrolier .B.Z.
- ⊙ Indicates New Electrolier .B.Z.
- ⊙ Indicates Future Electrolier .B.Z.
- ⊙ Indicates Adjacent System

Grid	Revision Description	Date	by

Title	6TH ST. & HARBOR BLVD. L.D.			Sheet No.	15161
					1 of 1