



Fwd: Input for Council Meeting 11/20/18

1 message

Tue, Nov 20, 2018 at 6:52 AM

From: Carolin [mailto:carolin@lacity.org]

Hi,

Here is my input on the following items found on the agenda for tomorrow's meeting:

-Kory

----- Forwarded message -----

From: **The SEO Doctors** <theseodoctors@gmail.com>

Date: Tue, Nov 20, 2018 at 2:13 AM

Subject: Input for Council Meeting 11/20/18

To: <councilmember.cedillo@lacity.org>, <councilmember.krekorian@lacity.org>, <councilmember.blumenfield@lacity.org>, <David.Ryu@lacity.org>, <paul.koretz@lacity.org>, <councilmember.rodriguez@lacity.org>, <councilmember.harris-dawson@lacity.org>, <councilmember.price@lacity.org>, <councilmember.bonin@lacity.org>, <councilmember.ofarrell@lacity.org>, <councilmember.huizar@lacity.org>, <councilmember.buscaino@lacity.org>, <councilmember.martinez@lacity.org>, <councilmember.englander@lacity.org>, <councilmember.wesson@lacity.org>, <Clerk.CPS@lacity.org>

Hello ! :)

Here is my input on the following items found on the agenda for tomorrow's meeting:

-Kory

/*-----*/

Items 11, 8, 6, 5

File # 18-0900-S84

File # 18-0900-S90

File # 18-0900-S92

File # 18-0900-S95

What do the improvements and maintenance consist of?
What do the lighting districts consist of, besides street lighting ?
Where can I find this information ?
Besides the meeting, where can I hear/find these protests ?

Item 13 - File# 17-0535-S1

This looks like a bunch of smaller projects. This looks cool.

Item 14 - File# 08-1864-S1

Building up school for \$14M. I'm with it.

Item 19 - File# 18-0401

Street-racing. Where is this occurring ? I understand that safety and property damage would be the main concern here. Is there somewhere we could allow it ? Or maybe somewhere we could be more lenient ? We could build a culture around it. Say maybe Silver Lake ? Fast n the Furious ? cough cough

[I'd say Sunset blvd from Cha Chas to Grand. That stretch is usually pretty quiet and desolate at night with wide streets and lanes, and would be safer.]

Item 22 - File# 18-1075

Man, \$17M ? Take a look at this property. [See (2) images attached.] \$17M is going to build something huge, right?

Why are we trying to build this city higher ? It's an honest question. What is the motive ?

I'm still trying to find who is pushing to make Los Angeles into New York. People choose LA over New York because it has a different feel. Can't you see that it's going to ruin the Westside ?

Where can I get more information on this project ?

I am 100% for giving money to help this school procure better facilities, but I am 100% against this motion because I believe it is a predatory and malicious move to continue to build our neighborhoods taller and more obstructive.

Item 24 - File# 18-0010-S30

Yo so who's out here killing people ? Wtf. What happened ? Where did it happen ?

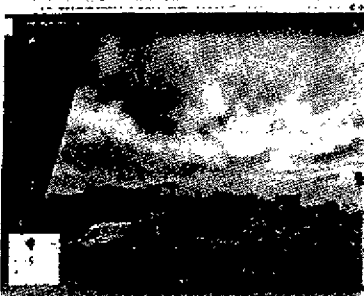


2442 Barry Ave.
Los Angeles, Ca 90064
(310)600-2278
TheSEODOctors@gmail.com
www.TheSEODOctors.com



This electronic message contains information from *The SEO Doctors*, which may be privileged or confidential. This message and the information it contains is intended solely for use by the individual(s) or entity named above. If you are not the intended recipient be aware that any disclosure, copying, distribution, use of or benefit from the contents of this information (without the express prior written consent of its author) is prohibited. If you have received this electronic message in error, please notify us by telephone or email immediately.

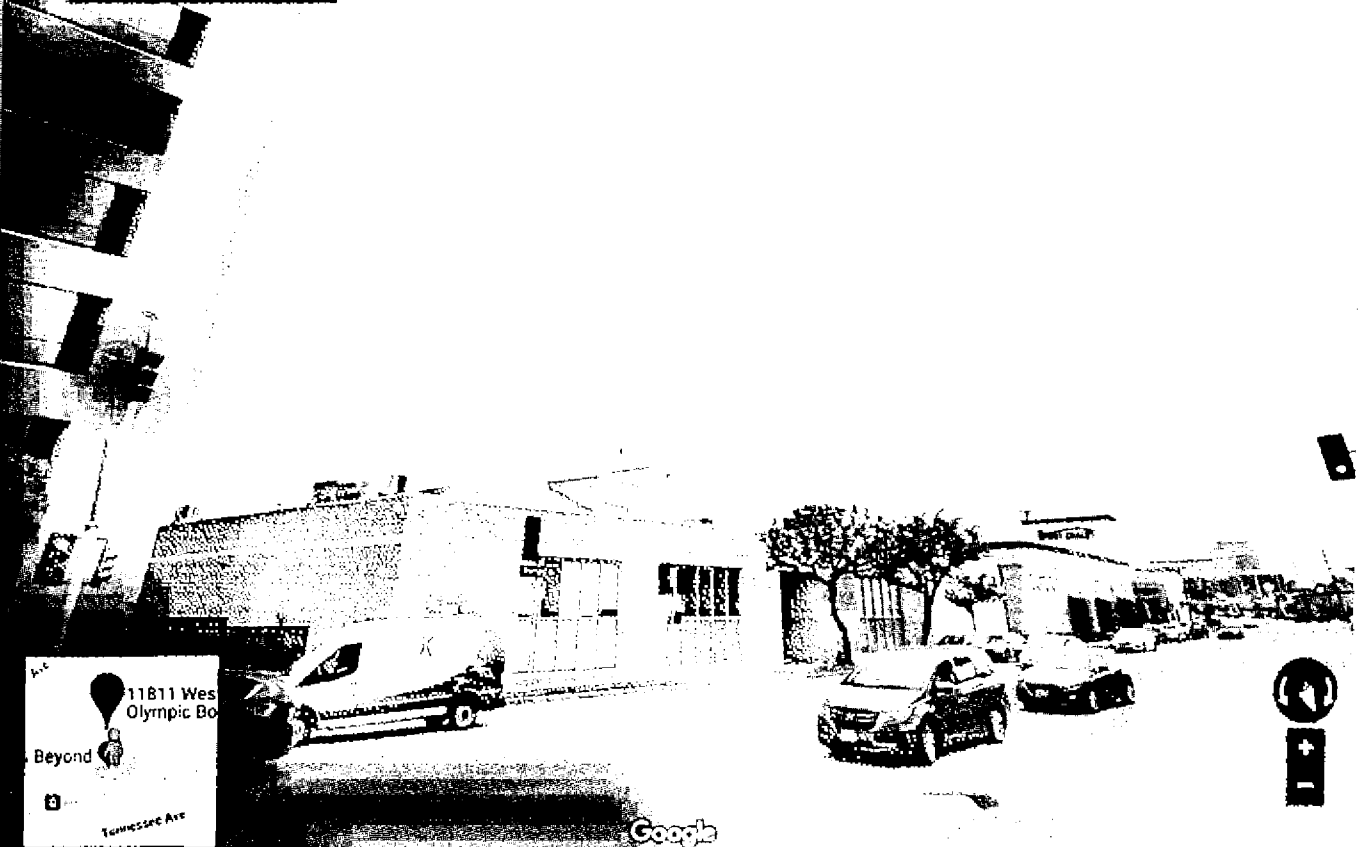
2 attachments



Screen Shot 2018-11-20 at 2.00.08 AM.png
4633K

Screen Shot 2018-11-20 at 1.58.27 AM.png
6967K

11811 Olympic Blvd
Los Angeles, California
Google, Inc.
Street View - Apr 2018



11811 Wes
Olympic Bo
Beyond
Tennessee Ave

Google

