

BOARD OF PUBLIC WORKS  
MEMBERS

KEVIN JAMES  
PRESIDENT

AURA GARCIA  
VICE PRESIDENT

DR. MICHAEL R. DAVIS  
PRESIDENT PRO TEMPORE

JESSICA CALOZA  
COMMISSIONER

M. TERESA VILLEGAS  
COMMISSIONER

CITY OF LOS ANGELES

CALIFORNIA



ERIC GARCETTI  
MAYOR

OFFICE OF THE  
BOARD OF PUBLIC WORKS

DR. FERNANDO CAMPOS  
EXECUTIVE OFFICER

200 NORTH SPRING STREET  
ROOM 361, CITY HALL  
LOS ANGELES, CA 90012

TEL: (213) 978-0261  
TDD: (213) 978-2310  
FAX: (213) 978-0278

<http://bpw.lacity.org>

January 15, 2020

**Council Hearing – 01/21/2020**  
**Council File No. 19-0900-S106**

City Council  
Room No. 395  
City Hall

Honorable Members:

**ASSESSMENT HEARING # 8 – 11<sup>TH</sup> STREET AND BEACON AVENUE**

Inasmuch as no one protested the assessments pursuant to the hearing scheduled this date, in connection with the maintenance for 11<sup>th</sup> Street and Beacon Avenue - Street Lighting Maintenance Assessment District, the Board of Public Works recommends that the assessments therefore be confirmed.

Sincerely,

DR. FERNANDO CAMPOS,  
Executive Officer, Board of Public Works

FC:LC

CC: Director, Bureau of Street Lighting



DEPARTMENT OF PUBLIC WORKS  
BUREAU OF STREET LIGHTING

DATE SEP 23 2019

C.D. 1

Honorable City Council  
of the City of Los Angeles

**11TH STREET AND BEACON AVENUE  
STREET LIGHTING MAINTENANCE ASSESSMENT DISTRICT**

---

This report submits the proposed Ordinance of Intention to institute maintenance assessment proceedings for the above street lighting project.

**RECOMMENDATIONS**

1. Council adopt this report and the Ordinance of Intention, and that the proceedings be conducted in accordance with Sections 6.95 - 6.127 of the Los Angeles Administrative Code, Section 53753 of the California Government Code, and Proposition 218 (Articles XIII C and XIII D of the California Constitution). This includes Council holding a Public Hearing for the proposed District Diagram with City page numbers 15331.
2. Upon Council adoption of the Ordinance of Intention, the Bureau of Street Lighting be instructed to: Mail notices of the assessment ballot proceedings, and Mail assessment ballots (as required by Prop. 218) to the property owners in the lighting district.
3. Upon completion of Item 2 above, the City Clerk be instructed to conduct the assessment ballot proceedings (i.e. count, certify, and report the results of the assessment ballot proceedings to the Council).
4. Following the conclusion of the final public hearing, if a project has weighted "YES" votes equal to, or in excess of weighted "NO" votes, the Council shall deny the appeals, confirm the maintenance assessments, and adopt the Final Ordinance levying the assessments. If the weighted "NO" votes are in excess of weighted "YES" votes, Council will abandon the lighting district and proceedings in accordance with Proposition 218; and the affected street lighting system shall be removed from service or not be constructed.
5. A copy of this report be provided to each affected Council office and the Mayor's Office of Economic Development.

The passage of Proposition 218 on November 5, 1996, requires a vote of the property owners prior to Council confirming and levying the assessments for maintenance. Upon adoption of the transmitted Ordinance of Intention, the Council shall set a date for hearing appeals and the last day to receive completed assessment ballots. A hearing to be held by the Board of Public Works will be scheduled at least one week prior to the date of the public hearing for the City Council to review and resolve any appeals concerning the proposed maintenance assessments – as specified in the Engineer's Report. If the assessment ballot proceeding as required by Proposition 218 approves these assessments, the City Council may confirm and levy the assessments. If levied, the administration of this district may be combined with that of another district or districts in the future as provided in the Ordinance of Intention. Protests that are received, as described in the Administrative Code, are for the consideration of the Council, but are not binding. Only a weighted majority vote against the assessment is binding.

The assessments to be levied to pay for the cost and expenses of the work or improvements in the proposed 11TH STREET AND BEACON AVENUE Street Lighting Maintenance Assessment District (or Sidewalk Maintenance Assessment District) fall within the (e)7 exemption of Prop 26. As set forth in the accompanying Ordinance of Intention, said assessments will be imposed in accordance with the provisions of Article XIII D of the California Constitution.

In accordance with Council Policy adopted on December 11, 1998, the Bureau of Street Lighting will cast ballots in favor of the assessments for all Council controlled public properties in the district.

### SUMMARY

TOTAL STREETLIGHTS:	2
AFFECTED PARCELS:	3
TOTAL ASSESSMENTS:	\$ 492.17
TAX YEAR:	2019/2020
TYPE OF PROJECT:	PROPOSED PRIVATE DEVELOPMENT PROJECT

### TRANSMITTALS

1. Ordinance of Intention, approved as to form and legality by the City Attorney, for the proposed assessment district.
2. Engineer's Report as required by Proposition 218.
3. Proposed assessment roll.
4. Diagram delineating those lands proposed to be assessed.

Report prepared by:  
Assessment Engineering Division  
Proposition 218 Compliance Section  
L. Dam, Street Lighting Engineering Associate II  
Ruben Flamenco, P.E., Division Manager

Respectfully submitted,

*Ruben Flamenco for*  
Norma Isahakian, Executive Director  
Bureau of Street Lighting

LAND USE METHOD



SCALE  
1" = 100'

PRIOR TO THE FOLLOWING DATES, THE LISTED PARCELS WERE ASSESSED UNDER THE REFERENCE NUMBERS AS SHOWN:

DATE	PARCEL NO.	DIST.	PREVIOUS REFERENCE PAGE	PARCEL

COUNCIL DISTRICT NO. 1  
PROJECT ID NO. 5485

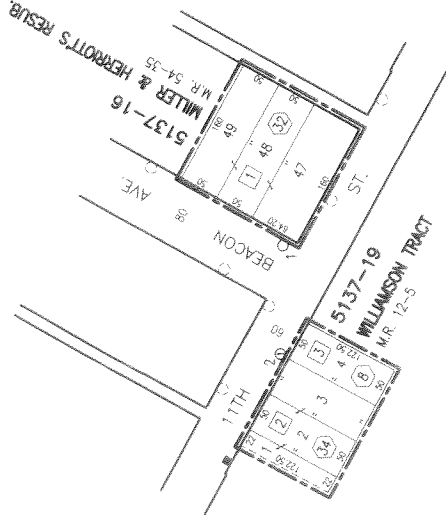
5137
C.M.B.
1619
Pages(s)

DISTRICT OUTLINED BY: *Ray Con*  
DISTRICT CHECKED BY: *Ruben J. Hernandez*  
APPROVED: *September 17, 2019*

Norma Gonzalez, Executive Director  
Bureau of Street Lighting

By: *Ruben J. Hernandez*, for

In Serv.	by	D.U.	120003
Drawn	by	A.T.	17
Checked	by	W.C.	BR004058
Thompson Guide Page	40	Grid	4C
Sheet No.	15331	1	of 1



- (1) Indicates L.A. County APN
- (2) Indicates L.A. City Assessment Number
- (3) Indicates New Electrolite
- (4) Indicates New Electrolite
- (5) Indicates New Electrolite
- (6) Indicates New Electrolite
- (7) Indicates New Electrolite
- (8) Indicates New Electrolite
- (9) Indicates New Electrolite
- (10) Indicates New Electrolite
- (11) Indicates New Electrolite
- (12) Indicates New Electrolite
- (13) Indicates New Electrolite
- (14) Indicates New Electrolite
- (15) Indicates New Electrolite
- (16) Indicates New Electrolite
- (17) Indicates New Electrolite
- (18) Indicates New Electrolite
- (19) Indicates New Electrolite
- (20) Indicates New Electrolite
- (21) Indicates New Electrolite
- (22) Indicates New Electrolite
- (23) Indicates New Electrolite
- (24) Indicates New Electrolite
- (25) Indicates New Electrolite
- (26) Indicates New Electrolite
- (27) Indicates New Electrolite
- (28) Indicates New Electrolite
- (29) Indicates New Electrolite
- (30) Indicates New Electrolite
- (31) Indicates New Electrolite
- (32) Indicates New Electrolite
- (33) Indicates New Electrolite
- (34) Indicates New Electrolite
- (35) Indicates New Electrolite
- (36) Indicates New Electrolite
- (37) Indicates New Electrolite
- (38) Indicates New Electrolite
- (39) Indicates New Electrolite
- (40) Indicates New Electrolite
- (41) Indicates New Electrolite
- (42) Indicates New Electrolite
- (43) Indicates New Electrolite
- (44) Indicates New Electrolite
- (45) Indicates New Electrolite
- (46) Indicates New Electrolite
- (47) Indicates New Electrolite
- (48) Indicates New Electrolite
- (49) Indicates New Electrolite
- (50) Indicates New Electrolite
- (51) Indicates New Electrolite
- (52) Indicates New Electrolite
- (53) Indicates New Electrolite
- (54) Indicates New Electrolite
- (55) Indicates New Electrolite
- (56) Indicates New Electrolite
- (57) Indicates New Electrolite
- (58) Indicates New Electrolite
- (59) Indicates New Electrolite
- (60) Indicates New Electrolite
- (61) Indicates New Electrolite
- (62) Indicates New Electrolite
- (63) Indicates New Electrolite
- (64) Indicates New Electrolite
- (65) Indicates New Electrolite
- (66) Indicates New Electrolite
- (67) Indicates New Electrolite
- (68) Indicates New Electrolite
- (69) Indicates New Electrolite
- (70) Indicates New Electrolite
- (71) Indicates New Electrolite
- (72) Indicates New Electrolite
- (73) Indicates New Electrolite
- (74) Indicates New Electrolite
- (75) Indicates New Electrolite
- (76) Indicates New Electrolite
- (77) Indicates New Electrolite
- (78) Indicates New Electrolite
- (79) Indicates New Electrolite
- (80) Indicates New Electrolite
- (81) Indicates New Electrolite
- (82) Indicates New Electrolite
- (83) Indicates New Electrolite
- (84) Indicates New Electrolite
- (85) Indicates New Electrolite
- (86) Indicates New Electrolite
- (87) Indicates New Electrolite
- (88) Indicates New Electrolite
- (89) Indicates New Electrolite
- (90) Indicates New Electrolite
- (91) Indicates New Electrolite
- (92) Indicates New Electrolite
- (93) Indicates New Electrolite
- (94) Indicates New Electrolite
- (95) Indicates New Electrolite
- (96) Indicates New Electrolite
- (97) Indicates New Electrolite
- (98) Indicates New Electrolite
- (99) Indicates New Electrolite
- (100) Indicates New Electrolite

11TH ST. & BEACON AVE. L.D.

MAINTENANCE ASSESSMENT DIAGRAM  
FOR PROPOSITION 218 REQUIREMENTS  
SHOWING LOCATION OF ELECTROLITES AND THE  
EXTENT OF THE TERRITORY INCLUDED WITHIN THE  
ASSESSMENT DISTRICT  
FOR THE FURNISHING OF ELECTRIC ENERGY & MAINTENANCE FOR  
THE LIGHTING OF SAID DISTRICT IN THE CITY OF LOS ANGELES  
NORMA GONZALEZ, EXECUTIVE DIRECTOR - BUREAU OF STREET LIGHTING  
THE EXTERIOR BOUNDARIES OF THE ASSESSMENT DISTRICT ARE SHOWN  
NEW BOUNDARY