

BOARD OF PUBLIC WORKS
MEMBERS

KEVIN JAMES
PRESIDENT

CECILIA CABELLO
VICE PRESIDENT

DR. MICHAEL R. DAVIS
PRESIDENT PRO TEMPORE

JESSICA CALOZA
COMMISSIONER

AURA GARCIA
COMMISSIONER

CITY OF LOS ANGELES

CALIFORNIA



ERIC GARCETTI
MAYOR

OFFICE OF THE
BOARD OF PUBLIC WORKS

DR. FERNANDO CAMPOS
EXECUTIVE OFFICER

200 NORTH SPRING STREET
ROOM 361, CITY HALL
LOS ANGELES, CA 90012

TEL: (213) 978-0261
TDD: (213) 978-2310
FAX: (213) 978-0278

<http://bpw.lacity.org>

May 22, 2019

Council Hearing – 05/29/2019
Council File No. 19-0900-S18

City Council
Room No. 395
City Hall

Honorable Members:

**SUBJECT: ASSESSMENT HEARING # 1 – JEFERSON BOULEVARD AND
WESTERN AVENUE**

Inasmuch as no one protested the assessments pursuant to the hearing scheduled this date, in connection with the maintenance for Jefferson Boulevard and Western Avenue - Street Lighting Maintenance Assessment District, the Board of Public Works recommends that the assessments therefore be confirmed.

Sincerely,

DR. FERNANDO CAMPOS,
Executive Officer, Board of Public Works

FC:CH

CC: Director, Bureau of Street Lighting



DEPARTMENT OF PUBLIC WORKS
BUREAU OF STREET LIGHTING

DATE FEB 22 2019

C.D. 8

Honorable City Council
of the City of Los Angeles

**JEFFERSON BOULEVARD AND WESTERN AVENUE
STREET LIGHTING MAINTENANCE ASSESSMENT DISTRICT**

This report submits the proposed Ordinance of Intention to institute maintenance assessment proceedings for the above street lighting project.

RECOMMENDATIONS

1. Council adopt this report and the Ordinance of Intention, and that the proceedings be conducted in accordance with Sections 6.95 - 6.127 of the Los Angeles Administrative Code, Section 53753 of the California Government Code, and Proposition 218 (Articles XIII C and XIII D of the California Constitution). This includes Council holding a Public Hearing for the proposed District Diagram with City page number 15211 thru 15213.
2. Upon Council adoption of the Ordinance of Intention, the Bureau of Street Lighting be instructed to: Mail notices of the assessment ballot proceedings, and Mail assessment ballots (as required by Prop. 218) to the property owners in the lighting district.
3. Upon completion of Item 2 above, the City Clerk be instructed to conduct the assessment ballot proceedings (i.e. count, certify, and report the results of the assessment ballot proceedings to the Council).
4. Following the conclusion of the final public hearing, if a project has weighted "YES" votes equal to, or in excess of weighted "NO" votes, the Council shall deny the appeals, confirm the maintenance assessments, and adopt the Final Ordinance levying the assessments. If the weighted "NO" votes are in excess of weighted "YES" votes, Council will abandon the lighting district and proceedings in accordance with Proposition 218; and the affected street lighting system shall be removed from service or not be constructed.
5. A copy of this report be provided to each affected Council office and the Mayor's Office of Economic Development.

The passage of Proposition 218 on November 5, 1996, requires a vote of the property owners prior to Council confirming and levying the assessments for maintenance. Upon adoption of the transmitted Ordinance of Intention, the Council shall set a date for hearing appeals and the last day to receive completed assessment ballots. A hearing to be held by the Board of Public Works will be scheduled at least one week prior to the date of the public hearing for the City Council to review and resolve any appeals concerning the proposed maintenance assessments – as specified in the Engineer's Report. If the assessment ballot proceeding as required by Proposition 218 approves these assessments, the City Council may confirm and levy the assessments. If levied, the administration of this district may be combined with that of another district or districts in the future as provided in the Ordinance of Intention. Protests that are received, as described in the Administrative Code, are for the consideration of the Council, but are not binding. Only a weighted majority vote against the assessment is binding.

The assessments to be levied to pay for the cost and expenses of the work or improvements in the proposed JEFFERSON BOULEVARD AND WESTERN AVENUE Street Lighting Maintenance Assessment District (or Sidewalk Maintenance Assessment District) fall within the (e)7 exemption of Prop 26. As set forth in the accompanying Ordinance of Intention, said assessments will be imposed in accordance with the provisions of Article XIID of the California Constitution.

In accordance with Council Policy adopted on December 11, 1998, the Bureau of Street Lighting will cast ballots in favor of the assessments for all Council controlled public properties in the district.

SUMMARY

| | |
|---------------------|--------------------------------------|
| TOTAL STREETLIGHTS: | 145 |
| AFFECTED PARCELS: | 138 |
| TOTAL ASSESSMENTS: | \$ 57,487.75 |
| TAX YEAR: | 2018/2019 |
| TYPE OF PROJECT: | PROPOSED CITY OF LOS ANGELES PROJECT |

TRANSMITTALS

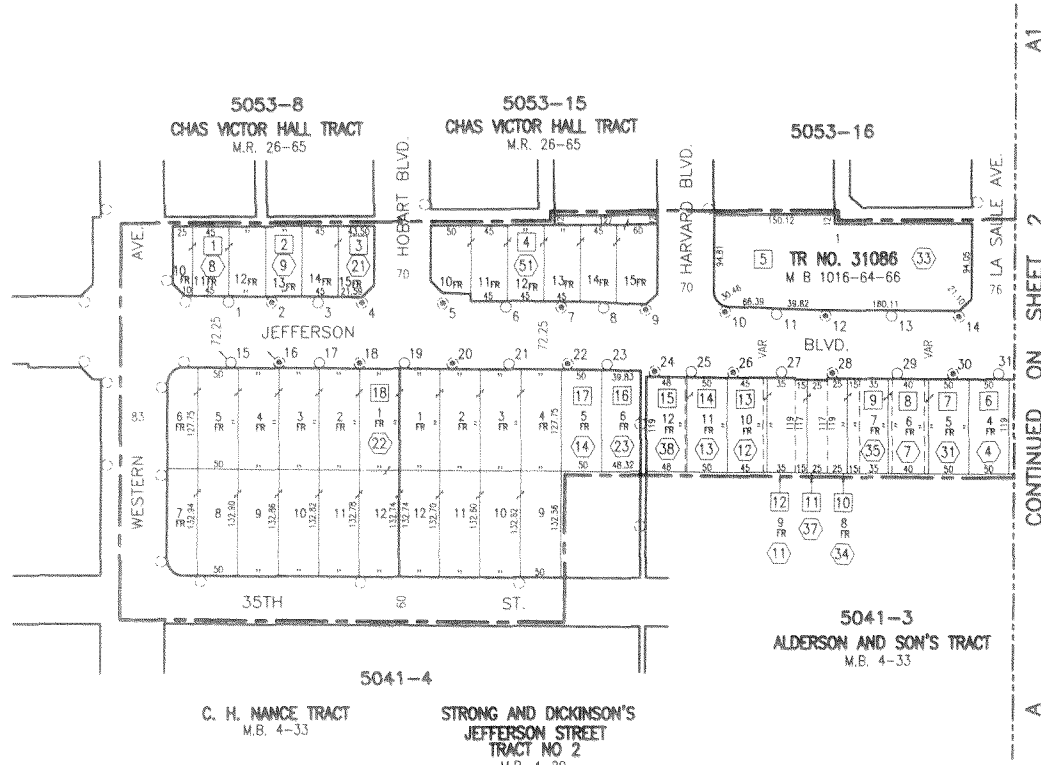
1. Ordinance of Intention, approved as to form and legality by the City Attorney, for the proposed assessment district.
2. Engineer's Report as required by Proposition 218.
3. Proposed assessment roll.
4. Diagram delineating those lands proposed to be assessed.

Report prepared by:
Assessment Engineering Division
Proposition 218 Compliance Section
C. Enriquez, Street Lighting Engineering Associate III
Ruben Flamenco, P.E., Division Manager

Respectfully submitted,

Ruben Flamenco for
Norma Isahakian, Executive Director
Bureau of Street Lighting

LAND USE METHOD



CONTINUED ON SHEET 2

PRIOR TO THE FOLLOWING DATES, THE LISTED PARCELS WERE ASSESSED UNDER THE REFERENCE NUMBERS AS SHOWN:

| DATE | PARCEL NO | PREVIOUS REFERENCE DIST | PAGE | PARCEL |
|------|-----------|-------------------------|------|--------|
| | | | | |
| | | | | |
| | | | | |
| | | | | |
| | | | | |
| | | | | |
| | | | | |
| | | | | |
| | | | | |

COUNCIL DISTRICT NO. 8
PROJECT ID NO. 4890

| C.M.B. | Page(s) |
|--------|-------------------|
| 5040 | 1,2,3,19,21-26,28 |
| 5041 | 1,3,4 |
| 5053 | 8,15,16,23,32 |

DISTRICT OUTLINED BY C. Enriquez
DISTRICT CHECKED BY Ruben Flamenco
APPROVED February 21, 2019
Norma Isahakian, Executive Director
Bureau of Street Lighting
By Ruben Flamenco
Engineer

| | | | | |
|-------------------|---------|------|------------------------|------------------|
| In. Serv. | Date | by | D.M. | 1208193, 1208197 |
| Drawn | 1-3-18 | A.T. | W.O. | Plan |
| Checked | 2-20-19 | C.E. | L1919746 | |
| Thomas Guide Page | 399 | | 633 7H, 633 7J, 634 7A | |

MAINTENANCE ASSESSMENT DIAGRAM FOR PROPOSITION 218 REQUIREMENTS SHOWING LOCATION OF ELECTROLIERS AND THE EXTENT OF THE TERRITORY INCLUDED WITHIN THE ASSESSMENT DISTRICT FOR THE FURNISHING OF ELECTRIC ENERGY & MAINTENANCE FOR THE LIGHTING OF SAID DISTRICT IN THE CITY OF LOS ANGELES. NORMA ISAHAKIAN, EXECUTIVE DIRECTOR - BUREAU OF STREET LIGHTING THE EXTERIOR BOUNDARIES OF THE ASSESSMENT DISTRICT ARE SHOWN

--- NEW BOUNDARY

- ① Indicates L.A. County APN
- ② Indicates L.A. City Assessment Number
- ③ Indicates New Electrolier .15' PED LT. 100W EQB.Z. 5
- ④ Indicates New Electrolier .15' PED LT. 100W EQB.Z. 5
- ⑤ Indicates New Electrolier .15' PED LT. 100W EQB.Z. 5
- ⑥ Indicates New Electrolier .15' PED LT. 100W EQB.Z. 5
- ⑦ Indicates New Electrolier .15' PED LT. 100W EQB.Z. 5
- ⑧ Indicates New Equipment ATTACHED PED LT. 100W EQB.Z. 3.5
- ⑨ Indicates New Equipment ATTACHED PED LT. 100W EQB.Z. 3.5
- ⑩ Indicates New Equipment ATTACHED PED LT. 100W EQB.Z. 3.5
- ⑪ Indicates Future ElectrolierB.Z. 5
- ⑫ Indicates Adjacent System

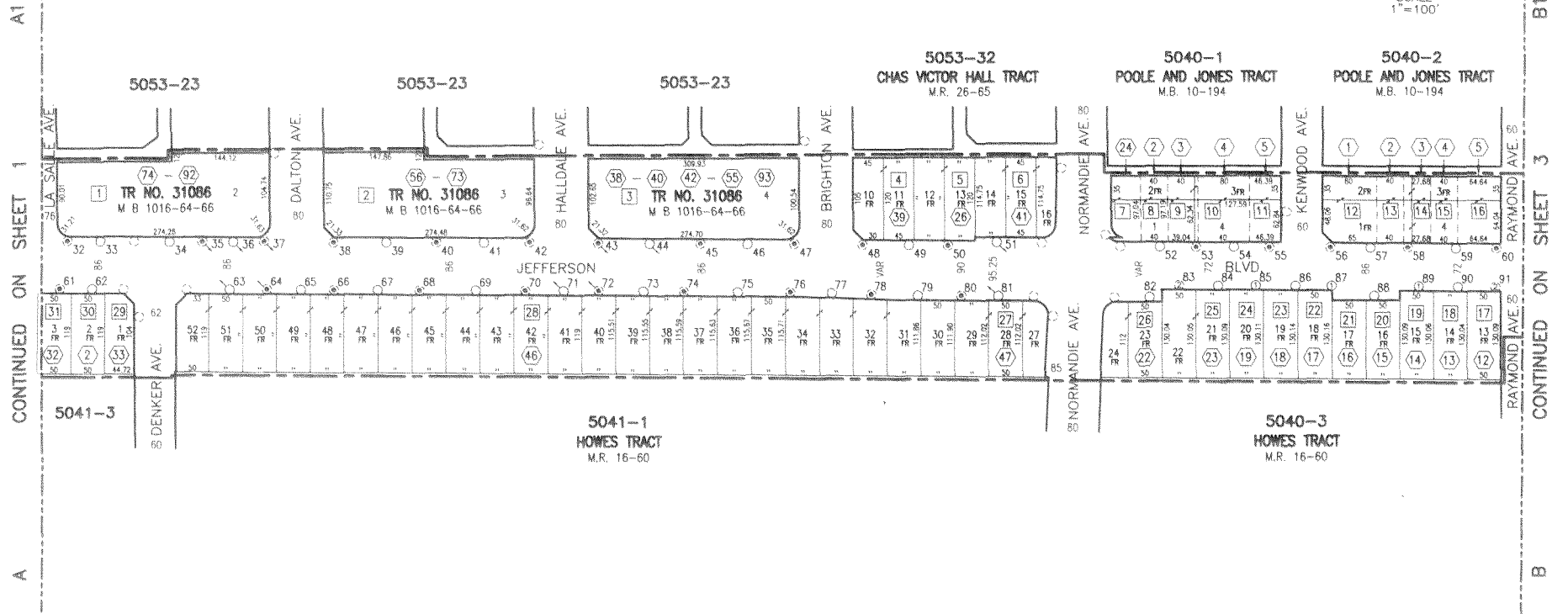
| | | | | | |
|------|--|------|--------------|----------|--------|
| File | JEFFERSON BLVD. & WESTERN AVE. L.D. | Page | 15211 | Sheet No | 1 of 3 |
|------|--|------|--------------|----------|--------|

H:\IPCSD\CAD\AutoCAD diagrams\jefferson-western.dwg Feb 13, 2019 - 1:02pm

LAND USE METHOD



SCALE
1" = 100'



| | | | | | |
|-------|-------------------------------------|------|-------|----------|--------|
| Title | JEFFERSON BLVD. & WESTERN AVE. L.D. | Page | 15212 | Sheet No | 2 of 3 |
|-------|-------------------------------------|------|-------|----------|--------|

H:\OPCSD\CAD\autoCAD diagrams\jefferson-western.dwg Feb 13, 2019 - 12:55pm



SCALE 1"=100'

B1
CONTINUED ON SHEET 2
B

5040-22
POOLE AND JONES TRACT
M.B. 10-194

5040-23
POOLE AND JONES TRACT
M.B. 10-194

5040-24
WIESENDANGER TRACT
M.R. 9-68

5040-25
WIESENDANGER TRACT
M.R. 9-68

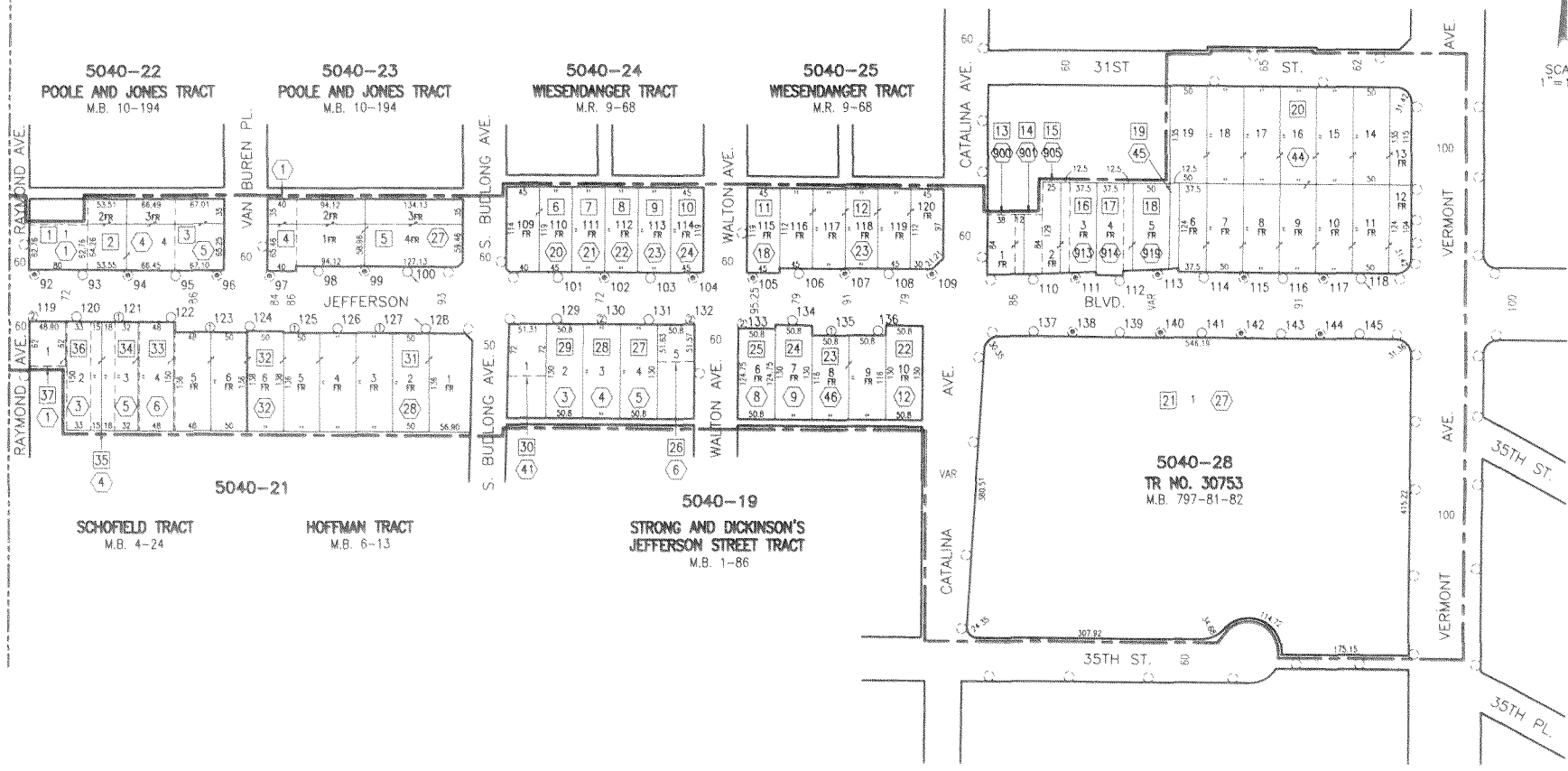
5040-26
ROBEDEAU TRACT
M.R. 9-16

5040-21
SCHOFIELD TRACT
M.B. 4-24

HOFFMAN TRACT
M.B. 6-13

5040-19
STRONG AND DICKINSON'S
JEFFERSON STREET TRACT
M.B. 1-86

5040-28
TR NO. 30753
M.B. 797-81-82



Title JEFFERSON BLVD. & WESTERN AVE. L.D.

Page 15213 Sheet No. 3 of 3

K:\DPCSD\CAD\m\l\CAD diagrams\jefferson-western.dwg Feb 13, 2019 - 12:57pm