

- ### KEYNOTES
- FACE OF WALL ABOVE @ SECOND LEVEL
  - 10' x 12' TRANSFORMER ACCESS HATCH, OPEN TO SKY ABOVE
  - TRANSFORMER VAULT BELOW
  - ROLL DOWN GATE W/ KNOX BOX
  - CONCRETE SHEAR WALL
  - STREET CURB
  - TARE STOP
  - CONCRETE COLUMN
  - F.D.C.
  - SHORT TERM BICYCLE PARKING (57 TOTAL)
  - LONG TERM BICYCLE PARKING (15 TOTAL)
  - TRANSFORMER VAULT EXHAUST AIR DUCT
  - TRANSFORMER VAULT FRESH AIR DUCT
  - 2" x 2" CLR. 2-HR RATED SHAFT FOR BUS DUCT
  - FIRE PUMP FEEDER CONDUITS INCREASED IN CONCRETE (SEE ELECTRICAL)
  - STRUCTURAL CORSEL ABOVE (SEE STRUCTURAL)
  - ELEVATOR LOBBY FAN COIL
  - ACCESS HATCH TO FIRE PUMP ROOM BELOW
  - EMERGENCY GENERATOR REMOTE FILL STATION
  - EMERGENCY DIESEL GENERATORS, W/ 300 GAL. BELLY TANKS (700 GAL. TOTAL)  
10 HOURS RUN TIME (MIN. 3 HOURS), BELLY TANKS TO COMPLY W/ LAFD 5764.2.3.7
  - 1" TYP. HOOD EXHAUST DUCT (SEE MECHANICAL)
  - 14" x 18" CLR. 2-HR RATED EXHAUST SHAFT TO ROOF AT 5TH FLOOR (SEE MECHANICAL)
  - DUCT ABOVE (SEE MECHANICAL)
  - LAUNDRY CHUTE W/ 80 MIN. RATED DOORS IN 2-HR RATED SHAFT
  - LAUNDRY EXHAUST 2-HR RATED SHAFT TO ROOF AT 5TH LEVEL (SEE MECHANICAL)
  - 16" x 48" SUPPLY & EXHAUST AIR 2-HR RATED SHAFT TO ROOF AT 5TH LEVEL (SEE MECHANICAL)
  - WATER HEATERS (SEE PLUMBING)
  - SLOPE FLOOR AWAY FROM ELEVATOR OPENINGS 1/8" PER 1'-0"
  - EMPLOYEE LOCKERS
  - DEPRESSED SLAB (SHADED AREA)
  - 14-LD REFRIGERATED DRINKING FOUNTAIN
  - BACKFLOW PREVENTER (SEE CHL)
  - UPLIGHTS TO LIGHT COLUMNS (SEE ELECTRICAL)
  - ROOF LADDER
  - ROOF DRAIN AND OVERFLOW RISERS (SEE PLUMBING); ROOF DRAIN RISER TO BE CONNECTED TO STORM DRAIN SYSTEM & THEN TO DRYWELL (SEE CIVIL); OVERFLOW RISER TO BE DISCHARGED 12' ABOVE ADJACENT SURFACE
  - AUTOMATIC FOLDING FIRE RATED PARTITION, CONNECT TO BUILDING'S FIRE ARM SYSTEM, BY WINDOW CORRELATION; ACCESS EVALUATION REPORT: CSR 1504
  - GREASE INTERCEPTOR AND OIL AND SAND SEPARATOR (SEE PLUMBING PLANS)
  - SAMPLE BOX (SEE PLUMBING PLANS)
  - EXISTING POWER POLE
  - EXISTING POWER LINE
  - BUILDING PROJECTION
  - PERMANENT MARKING FOR LOW EMISSION, FUEL EFFICIENT AND CAR POOL VEHICLES (6) SPACES TOTAL
  - FUTURE ELECTRIC VEHICLE CHARGING STATION; PROVIDE RACEWAY TO LOCATION FROM ELECTRICAL PANELS FOR FUTURE W/O-K-UP; EACH STATION CAPABLE OF CHARGING (2) CARS SIMULTANEOUSLY; SEE SHEET T1.0 GREEN BUILDING CODE NOTES, "ELECTRIC VEHICLE CHARGING" FOR MORE INFORMATION
  - NONCOMBUSTIBLE INTERIOR FLOOR & WALL FINISH MINIMUM 2 FEET AROUND AND PERPENDICULAR TO EXTERIOR ENTRIES
  - THE SURFACE SLOPE FOR THIS EVCS SHALL NOT EXCEED 2.06% SLOPE IN ANY DIRECTION
  - FREEZER DOOR SHOULD BE LOCKABLE FROM THE OUTSIDE, BUT EASILY OPENABLE FROM THE INSIDE WITHOUT ANY SPECIAL KNOWLEDGE OR KEY
  - 90° TURN PER L.A.S.D. INFORMATION BULLETIN P2002-001
  - ELEVATOR TO ACCOMMODATE A 24" x 64" AMBULANCE STRETCHER IN THE HORIZONTAL OPEN POSITION; PROVIDE THE INTERNATIONAL SYMBOL FOR EMERGENCY MEDICAL SERVICES SYMBOL SHALL BE PLACED INSIDE ON BOTH SIDES OF THE HORIZONTAL DOOR FRAMES. SEE DETAILS 212.4 AND 472.4
  - DRYWELL (SEE CIVIL)
  - 24" RATED SHAFT ABOVE (SEE MECHANICAL)
  - 12" x 12" EXHAUST HOOD SHAFT OPENING IN WALL ABOVE (SEE MECHANICAL)
  - RELOCATED ATM CABINET
  - 4" DIA. X 42" HIGH STEEL BOLLARDS W/ CONCRETE FILL, SPACED 5'-0" OC TYP.
  - AUTOMATIC SLIDING DOOR W/ BREAK AWAY EMERGENCY PANELS
  - ZERO CURB HEIGHT FULL LENGTH OF DROP OFF ZONE (SEE CIVIL)
  - LINE OF PC/AIR SCRUBBER ABOVE (SEE MECHANICAL)
  - ACCESSIBLE TABLE TOP SURFACE TO BE AT 28" MIN. TO 34" MAX. KNEE CLEARANCE; MIN. 27" H X 30" W X 19" D
  - FIRE ANNUNCIATOR PANEL
  - 45 MIN RATED WINDOW SYSTEM BY ALUMINUM MAX. AREA OF WINDOW 20% OF WALL AREA
  - PATCH AND PREP CONCRETE SHEAR WALL AS REQUIRED FOR PAINT
  - CONDUIT FOR FUTURE SIGNAGE
  - 5'-0" HIGH WALL
  - MECHANICAL EXHAUST / LOUVER - SEE MECHANICAL DRAWINGS
  - SOLID RECYCLING BIN
  - GREEN RECYCLING BIN
  - TRASH BIN
  - FIRE SHAKTER BY McKoon

### RESTROOM PLUMBING FIXTURES

OCCUPANT LOAD FACTOR OF PLUMBING FIXTURES PER TABLE 1016.0-4.1 AND TABLE A

PUBLIC RESTROOMS:			
A2 RESTAURANT, BAR LOBBY	2,224 SF	74 OCCUPANTS	
A3 BIL. FRESH DRESSING	430 SF	14 OCCUPANTS	
<b>TOTAL</b>		<b>88 OCCUPANTS</b>	
MALES		44 (WC-1, LAV-1, URINAL-1)	
FEMALES		44 (WC-2, LAV-1)	

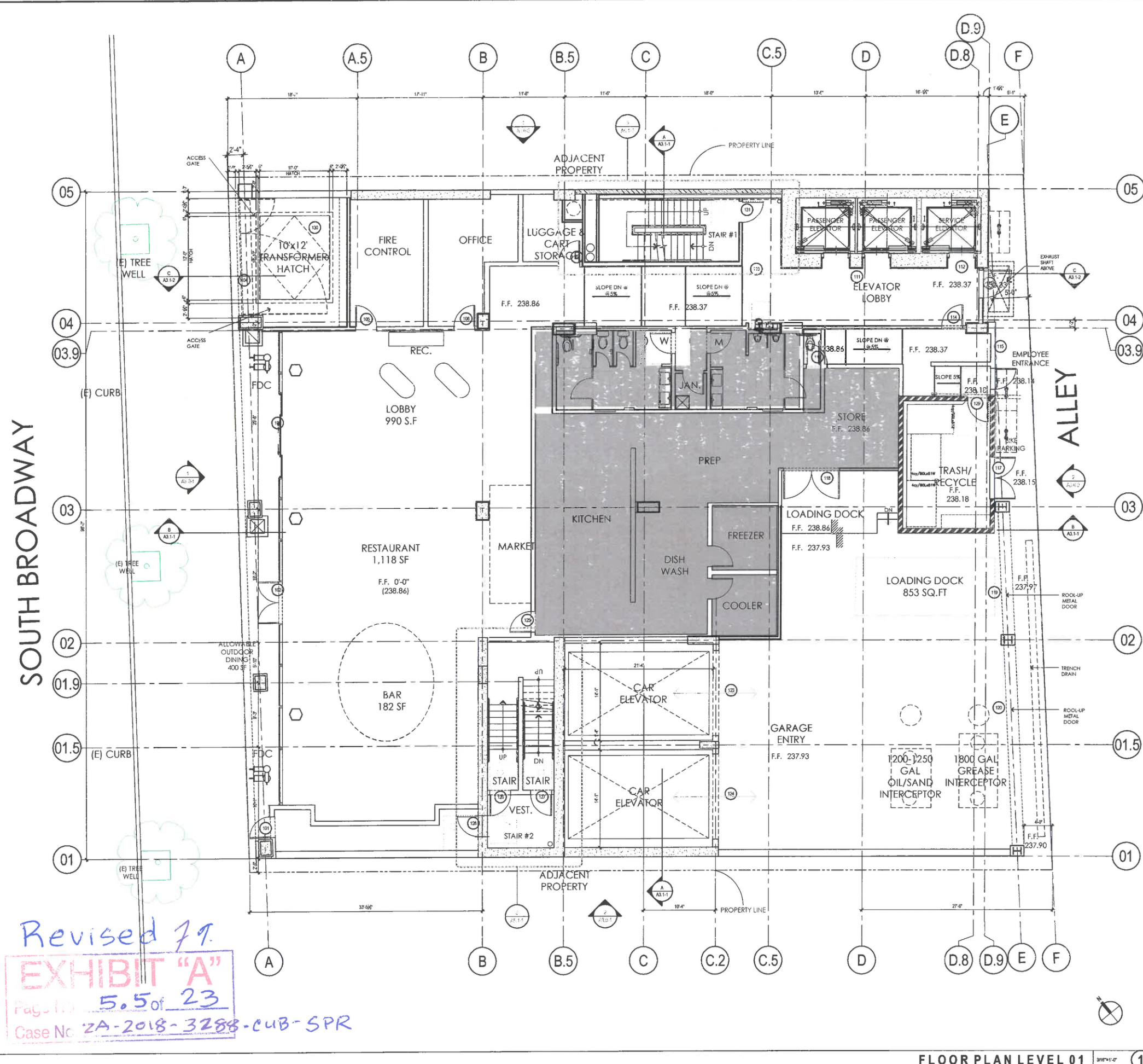
### WALL LEGEND

NOTE: SEE WALL SCHEDULE FOR DETAILED ASSEMBLY DESCRIPTIONS

	METAL STUD WALL, NON-RATED
	8" CMU WALL
	8" CONCRETE SHEAR WALL - SEE STRUCTURAL
	1-HOUR RATED WALL
	2-HOUR RATED WALL

### SYMBOLS LEGEND

	WALL TYPE - SEE WALL TYPE SCHEDULE / DETAIL ON SHEET A5.01A
	DOOR NUMBER - REFER TO DOOR SCHEDULE ON SHEET A5.1
	WINDOW TYPE - REFER TO WINDOW SCHEDULE ON SHEET A6.3



FLOOR PLAN LEVEL 01 316'-1'-0" 1

**KEYNOTES**

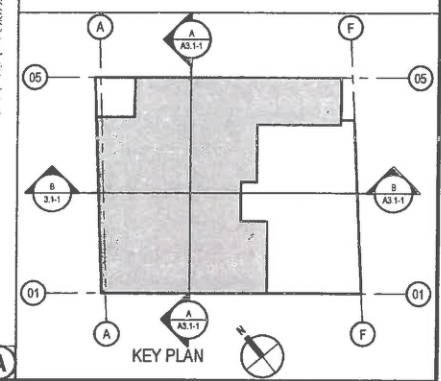
- 1 CONCRETE SLAB ON GRADE - SEE STRUCTURAL
- 2
- 3
- 4
- 5
- 6
- 7
- 8
- 9
- 10
- 11
- 12
- 13
- 14
- 15
- 16
- 17
- 18
- 19
- 20
- 21
- 22
- 23
- 24
- 25
- 26
- 27
- 28
- 29
- 30
- 31
- 32
- 33
- 34
- 35
- 36
- 37
- 38
- 39
- 40
- 41
- 42
- 43
- 44
- 45

**WALL LEGEND**

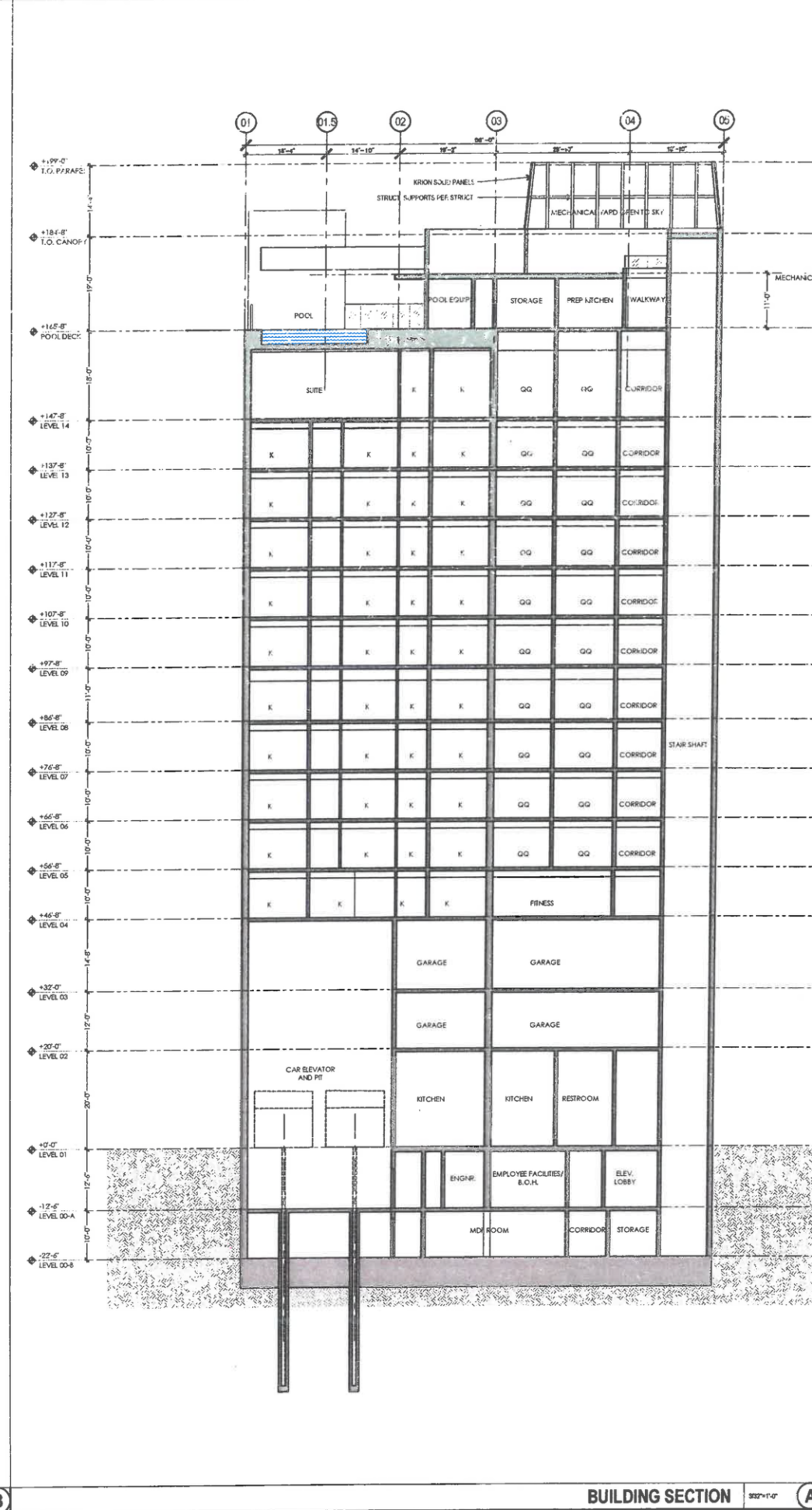
- NOTE: SEE WALL SCHEDULE FOR DETAILED ASSEMBLY DESCRIPTIONS
- METAL STUD WALL, NON-RATED
  - 8" CMU WALL
  - 8" CONCRETE SHEARWALL - SEE STRUCTURAL
  - 1-HOUR RATED WALL
  - 2-HOUR RATED WALL

**SYMBOLS LEGEND**

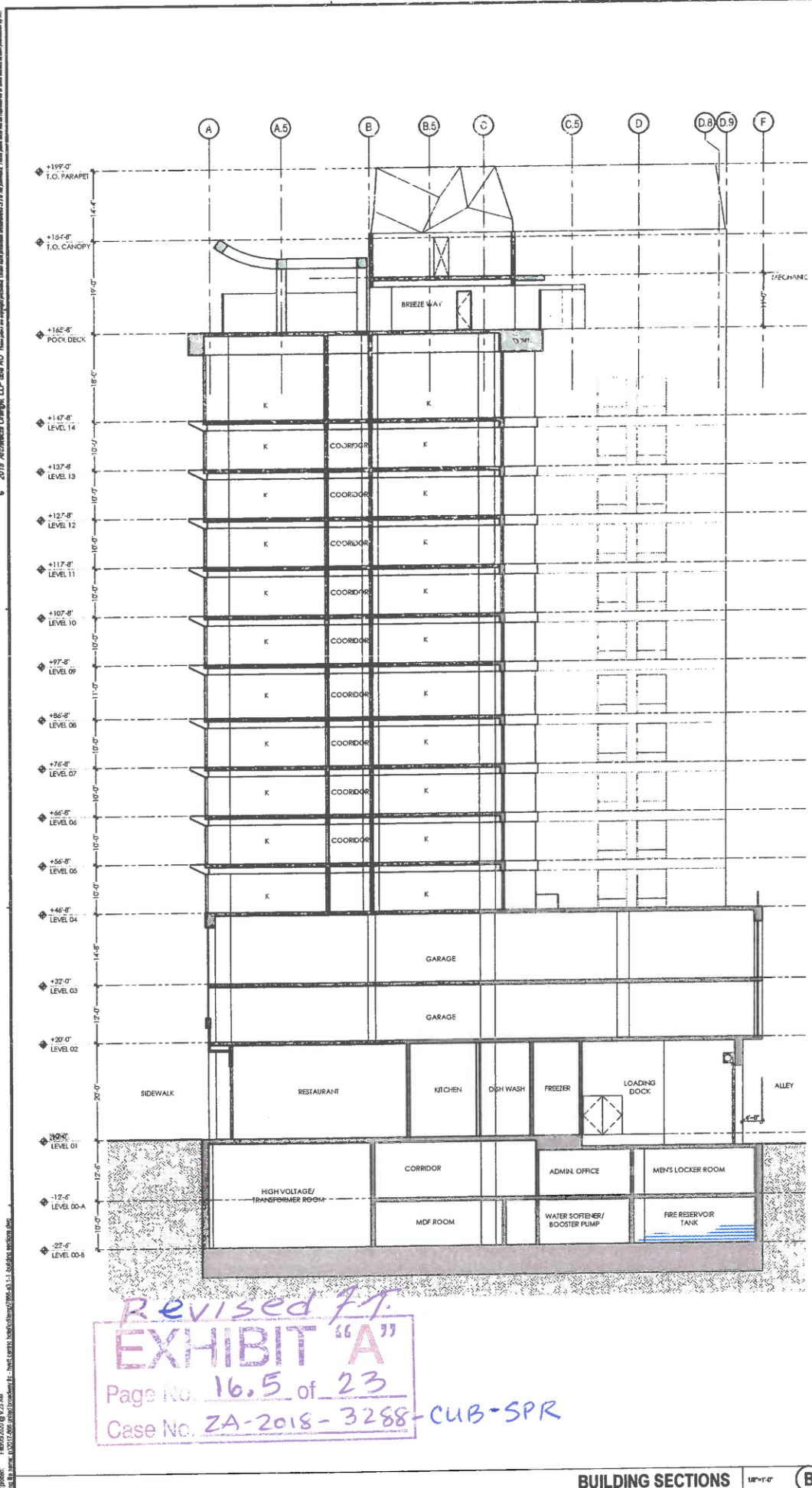
- WALL TYPE - SEE WALL TYPE SCHEDULE / DETAIL ON SHEET AS.01A
- NO. DOOR NUMBER - REFER TO DOOR SCHEDULE ON SHEET AS.1.1
- W WINDOW TYPE - REFER TO WINDOW SCHEDULE ON SHEET AS.3



PROJECT NUMBER: 2018-000  
 PLAN CHECK NUMBER: 2018-000  
 SHEET  
**A3.1-1**



BUILDING SECTION 3/2"=1'-0" **A**



BUILDING SECTIONS 1/8"=1'-0" **B**

Revised FT.  
**EXHIBIT "A"**  
 Page No. 16.5 of 23  
 Case No. ZA-2018-3288-CUB-SPR

DATE PLOTTED: 08/23/2018 10:32 AM  
 PLOT SCALE: 1/8"=1'-0"  
 PLOT SHEET: 16.5