

- KEYNOTES**
- 1 FACE OF WALL ABOVE @ SECOND LEVEL
 - 2 10 X 12 TRANSFORMER ACCESS HATCH, OPEN TO SKY ABOVE
 - 3 TRANSFORMER VAULT BELOW
 - 4 ROLL DOWN GATE W/ KNOCK BOX
 - 5 CONCRETE SHEAR WALL
 - 6 STREET CURB
 - 7 TREE STOP
 - 8 CONCRETE COLUMN
 - 9 F.D.C.
 - 10 SHORT TERM BICYCLE PARKING (57 TOTAL)
 - 11 LONG TERM BICYCLE PARKING (15 TOTAL)
 - 12 TRANSFORMER VAULT EXHAUST AIR DUCT
 - 13 TRANSFORMER VAULT FRESH AIR DUCT
 - 14 36" X 36" CLR. 2-HR RATED SHAFT FOR BUS DUCT
 - 15 FIRE PUMP FEEDER CONDUITS INCASSED IN CONCRETE (SEE ELECTRICAL)
 - 16 STRUCTURAL CORBEL ABOVE (SEE STRUCTURAL)
 - 17 ELEVATOR LOBBY FAN COIL
 - 18 ACCESS HATCH TO FIRE PUMP ROOM BELOW
 - 19 EMERGENCY GENERATOR REMOTE FILL STATION
 - 20 (2) EMERGENCY DIESEL GENERATORS, W/ 350 GAL BATTERY TANKS (750 GAL. TOTAL) TO 10 HOURS RUN TIME (APR. 3 HOURS), BATTERY TANKS TO COMPLY W/ LAFD 2014.2.17
 - 21 KITCHEN HOOD EXHAUST DUCT (SEE MECHANICAL)
 - 22 14"x17" CLR. 2-HR RATED EXHAUST SHAFT TO ROOF AT 5TH FLOOR (SEE MECHANICAL)
 - 23 DUCT ABOVE (SEE MECHANICAL)
 - 24 LAUNDRY CHUTE W/ 80 MIN. RATED DOORS IN 2-HR RATED SHAFT
 - 25 LAUNDRY EXHAUST 2-HR RATED SHAFT TO ROOF AT 5TH LEVEL (SEE MECHANICAL)
 - 26 18" X 48" SUPPLY & EXHAUST AIR 2-HR RATED SHAFT TO ROOF AT 5TH LEVEL (SEE MECHANICAL)
 - 27 WATER HEATERS (SEE PLUMBING)
 - 28 SLOPE FLOOR AWAY FROM ELEVATOR OPENINGS 1/8" PER 1'-0"
 - 29 EMPLOYEE LOCKERS
 - 30 DEEPRESSED SLAB (SHADED AREA)
 - 31 H-10 REFRIGERATED DRINKING FOUNTAIN
 - 32 BACKFLOW PREVENTER (SEE CIVIL)
 - 33 UPLIGHTS TO LIGHT COLUMNS (SEE ELECTRICAL)
 - 34 ROOF LADDER
 - 35 ROOF DRAIN AND OVERFLOW RISERS (SEE PLUMBING); ROOF DRAIN RISER TO BE CONNECTED TO STORM DRAIN SYSTEM & THEN TO DRYWELL (SEE CIVIL); OVERFLOW RISER TO BE DISCHARGED 12' ABOVE ADJACENT SURFACE.
 - 36 AUTOMATIC, FOLDING FIRE RATED PARTITION, CONNECT TO BUILDING'S FIRE ALARM SYSTEM BY "WIG-DOOR CORPORATION", ICC-ES EVALUATION REPORT: ESR-1268
 - 37 GREASE INTERCEPTOR AND OIL AND SAND SEPARATOR (SEE PLUMBING PLANS)
 - 38 SAMPLE BOX (SEE PLUMBING PLANS)
 - 39 EXISTING POWER POLE
 - 40 EXISTING POWER LINE
 - 41 BUILDING PROJECTION
 - 42 PERMANENT MARKING FOR LOW EMISSION, FUEL EFFICIENT AND CAR POOL VEHICLES.
 - 43 (5) SPACES TOTAL
 - 44 FUTURE ELECTRIC VEHICLE CHARGING STATION, PROVIDE RACEWAY TO LOCATION FROM ELECTRICAL PANEL. FOR FUTURE HOV-UP, EACH STATION CAPABLE OF CHARGING 20 CARS SIMULTANEOUSLY. SEE SHEET T1.1 GREEN BUILDING CODE NOTES, "ELECTRIC VEHICLE CHARGING" FOR MORE INFORMATION.
 - 45 NONADJACENT INTERIOR FLOOR & WALL FINISH MINIMUM 2 FEET AROUND AND PERPENDICULAR TO EXTERIOR ENTRANCE.
 - 46 THE SURFACE SLOPE FOR THIS CIVCS SHALL NOT EXCEED 2.00% SLOPE IN ANY DIRECTION
 - 47 FREEZER DOOR SHOULD BE LOCKABLE FROM THE OUTSIDE, BUT EASILY OPENABLE FROM THE INSIDE WITHOUT ANY SPECIAL KNOWLEDGE OR KEY
 - 48 80" TURN PER L.A.D.B.S. INFORMATION BULLETIN RICC 2002-01
 - 49 ELEVATOR TO ACCOMMODATE A 30'x70" AMBULANCE STRETCHER IN THE HORIZONTAL OPEN POSITION. PROVIDE THE INTERNATIONAL SYMBOL FOR EMERGENCY MEDICAL SERVICES. SYMBOL SHALL BE PLACED INSIDE ON BOTH SIDES OF THE HOISTWAY DOOR FRAMES. SEE DETAILS 972.4 AND 972.4
 - 50 DRYWELL (SEE CIVIL)
 - 51 2-HR RATED SHAFT ABOVE (SEE MECHANICAL)
 - 52 12" X 12" EXHAUST HOOD SHAFT OPENING IN WALL ABOVE (SEE MECHANICAL)
 - 53 RELOCATED AT 81 CABINET
 - 54 4" DIA X 42" HIGH STEEL BOLLARDS W/ CONCRETE FILL, SPACED 5'-0" OC TYP.
 - 55 AUTOMATIC SLIDING DOOR W/ BREAK AWAY EMERGENCY PANELS
 - 56 ZERO CURB HEIGHT FULL LENGTH OF DROP OFF ZONE (SEE CIVIL)
 - 57 LINE OF POLY AIR SCREENER ABOVE (SEE MECHANICAL)
 - 58 ACCESSIBLE TABLE TOP SURFACE TO BE AT 28" MIN. TO 34" MAX. CLEARANCE. MIN. 27" H X 30" W X 18" D.
 - 59 FIRE ANNUNCIATOR PANEL
 - 60 45 MIN RATED WINDOW SYSTEM BY ALUMINUM, MAX. AREA OF WINDOW 25% OF WALL AREA.
 - 61 PATCH AND PREP CONCRETE SHEAR WALL AS REQUIRED FOR PAINT.
 - 62 CONDUIT FOR FUTURE SIGNAGE
 - 63 9'-0" HIGH WALL
 - 64 MECHANICAL EXHAUST / LOUVER - SEE MECHANICAL DRAWINGS
 - 65 SOLID RECYCLING BIN
 - 66 GREEN RECYCLING BIN
 - 67 TRASH BIN
 - 68 FIRE SHUTTER BY DESIGN

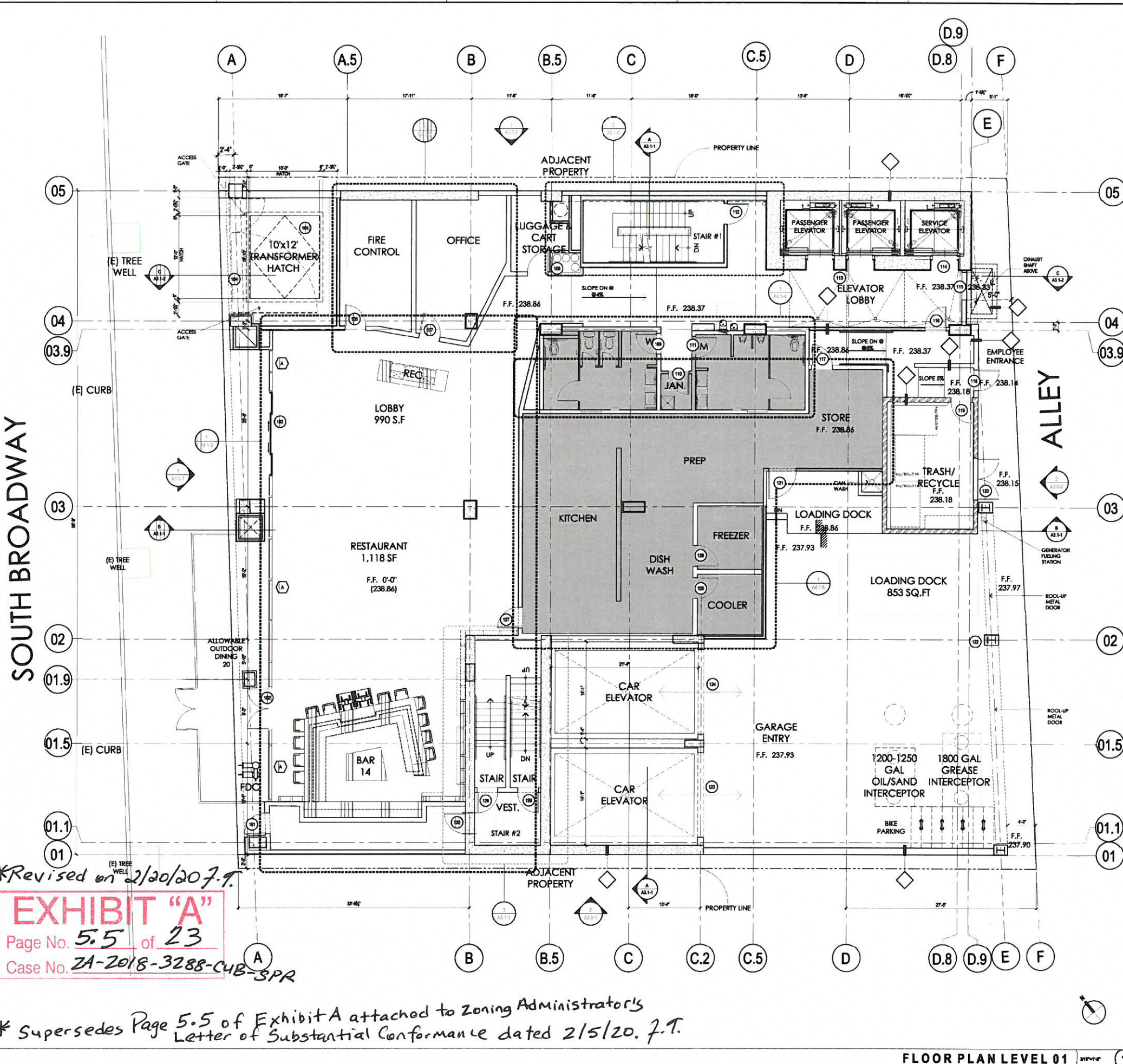
ZONING NOTE
PARKING, LOADING, AND STORAGE OF GOODS PROHIBITED WITHIN FOUR FOOT GROUND FLOOR SETBACK AREA AT ALLEY.

WALL LEGEND NOTE: SEE WALL SCHEDULE FOR DETAILED ASSEMBLY DESCRIPTIONS

	METAL STUD WALL, NON-RATED
	6\"/>
	8\"/>
	1-HOUR RATED WALL
	2-HOUR RATED WALL

SYMBOLS LEGEND

	WALL TYPE - SEE WALL TYPE SCHEDULE / DETAIL ON SHEET A1.10.A
	DOOR NUMBER - REFER TO DOOR SCHEDULE ON SHEET A1.1
	WINDOW TYPE - REFER TO WINDOW SCHEDULE ON SHEET A1.3



**Revised on 2/20/2019*

EXHIBIT "A"
Page No. **5.5** of **23**
Case No. **2A-2018-3288-CUB-SPR**

**Supersedes Page 5.5 of Exhibit A attached to Zoning Administrator's Letter of Substantial Conformance dated 2/5/20. J.T.*