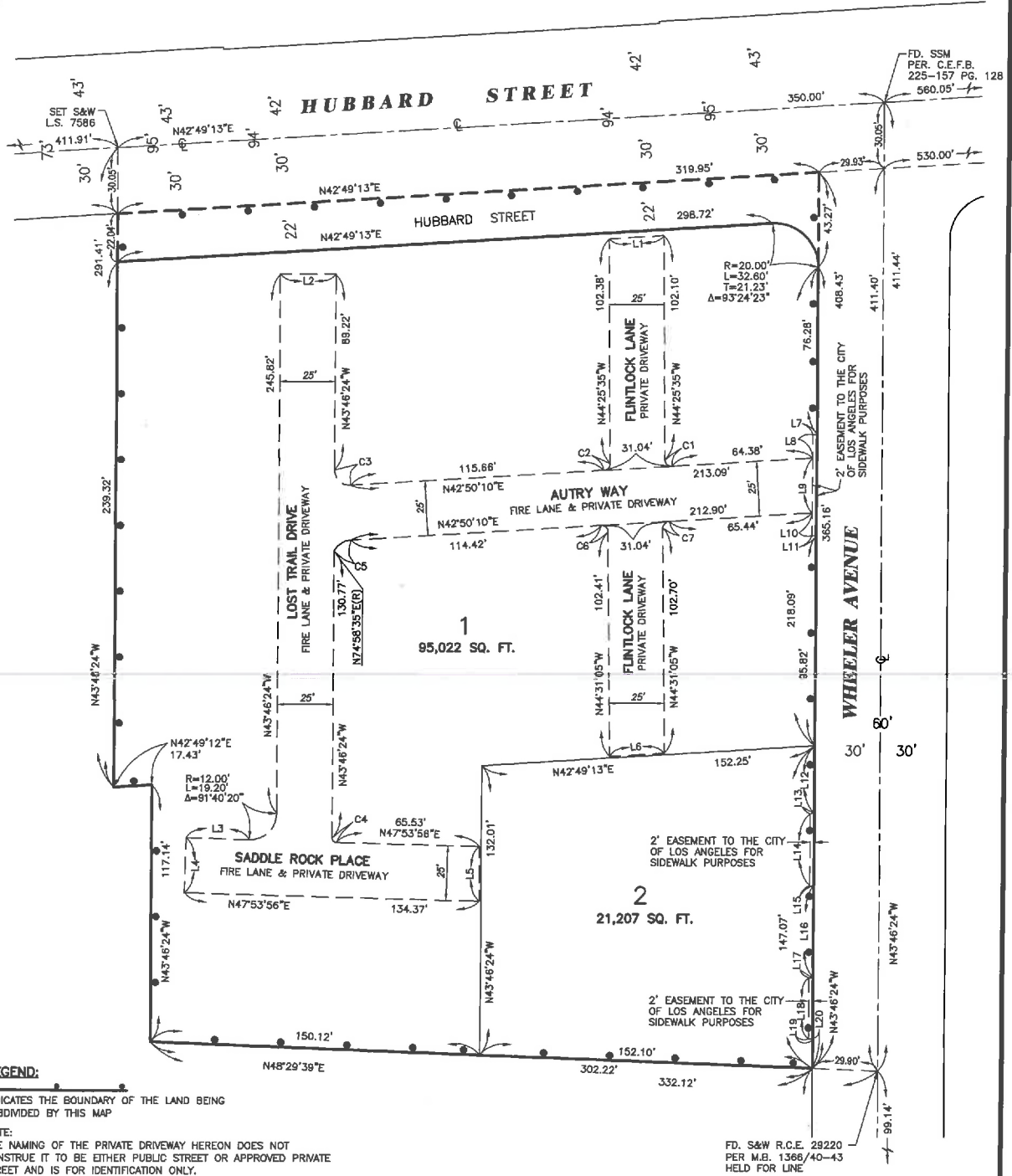
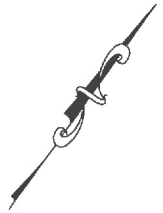


TRACT NO. 63084

IN THE CITY OF LOS ANGELES
STATE OF CALIFORNIA

EXHIBIT A



LEGEND:

INDICATES THE BOUNDARY OF THE LAND BEING SUBDIVIDED BY THIS MAP

NOTE:

THE NAMING OF THE PRIVATE DRIVEWAY HEREON DOES NOT CONSTITUTE IT TO BE EITHER PUBLIC STREET OR APPROVED PRIVATE STREET AND IS FOR IDENTIFICATION ONLY.

FD. S&W R.C.E. 29220
PER M.B. 1366/40-43
HELD FOR LINE

CURVE DATA - THIS SHEET ONLY				
NO.	RADIUS	DELTA	ARC	TAN
C1	3.00'	92°44'15"	4.86'	3.15'
C2	3.00'	87°15'45"	4.57'	2.86'
C3	7.00'	93°23'26"	11.41'	7.43'
C4	2.00'	88°19'40"	3.08'	1.94'
C5	9.80'	56°23'33"	6.45'	5.15'
C6	3.00'	92°38'45"	4.85'	3.14'
C7	3.00'	87°21'15"	4.57'	2.86'

LINE DATA - THIS SHEET ONLY		
NO.	BEARING	DISTANCE
L1	N42°48'13"E	25.03'
L2	N46°13'36"E	25.00'
L3	N47°53'56"E	28.79'
L4	N42°08'04"W	25.00'
L5	N43°46'24"W	25.01'
L6	N42°52'34"E	25.03'
L7	N46°13'36"E	2.00'
L8	N43°46'24"W	10.63'
L9	N43°46'24"W	25.04'
L10	N43°46'24"W	10.33'

LINE DATA - THIS SHEET ONLY		
NO.	BEARING	DISTANCE
L11	N48°13'36"E	2.00'
L12	N43°46'24"W	30.76'
L13	N46°13'36"E	2.00'
L14	N43°46'24"W	33.00'
L15	N46°13'36"E	2.00'
L16	N43°46'24"W	41.93'
L17	N46°13'36"E	2.00'
L18	N43°46'24"W	28.00'
L19	N46°13'36"E	2.00'
L20	N43°46'24"W	13.38'