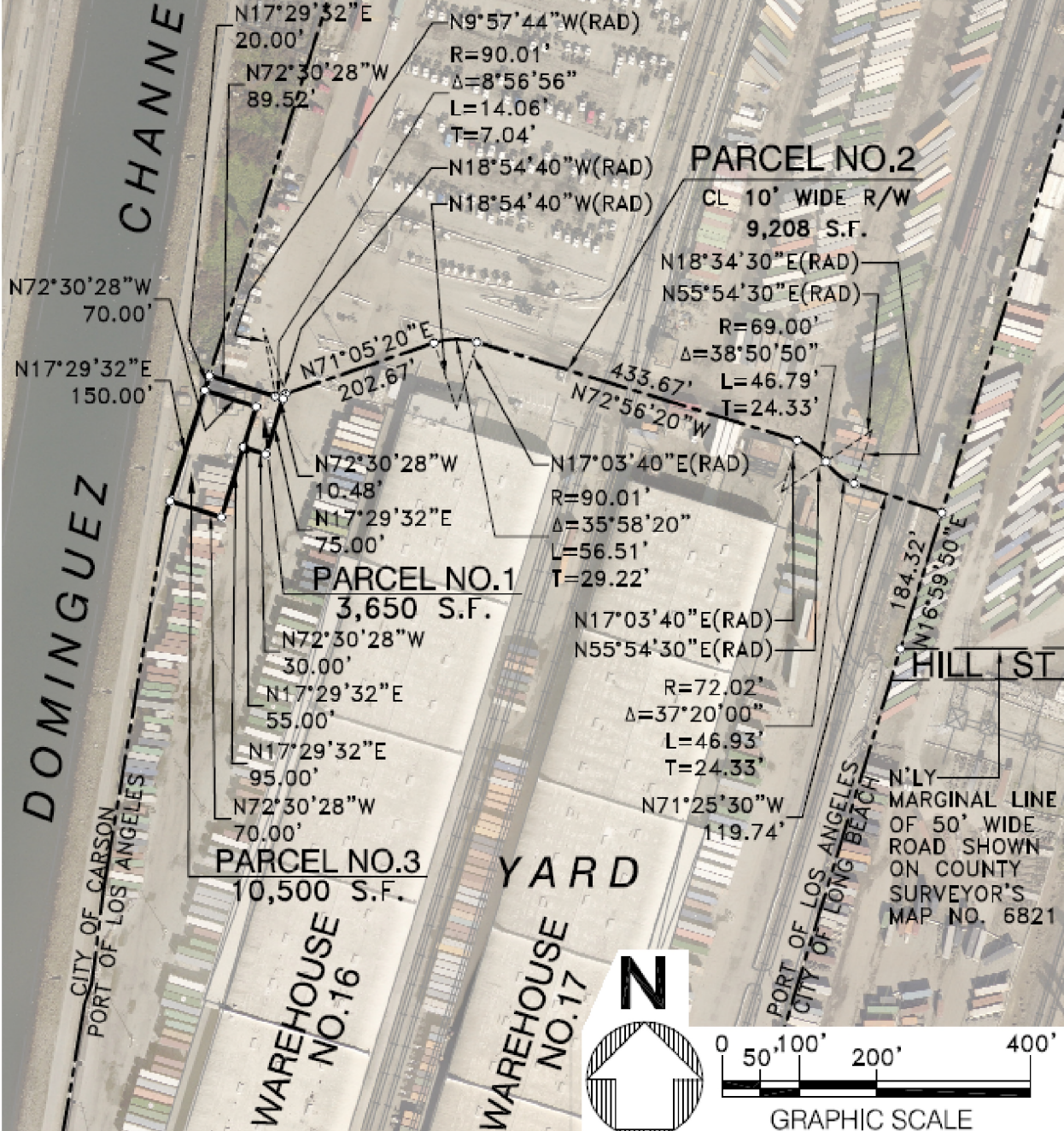


CLASSIFICATION



NOTES:

- 1) NO SUBSTRUCTURES ARE SHOWN ON THIS DRAWING. ACCURATE SUBSTRUCTURE INFORMATION MUST BE OBTAINED FROM LESSEES AND L.A.H.D. ENGINEERING RECORDS.
- 2) HORIZONTAL DATUM IS BASED ON THE NORTH AMERICAN DATUM OF 1983 (NAD 83), CALIFORNIA COORDINATE SYSTEM, ZONE 5, FEET.
- 3) ALL DISTANCES SHOWN ON THIS DRAWING ARE GRID DISTANCES. TO OBTAIN A REASONABLE REPRESENTATION OF THE GROUND DISTANCE, DIVIDE THE DISTANCE HEREIN BY THE AVERAGE SCALE FACTOR OF 1.000076.

SCALE 1"=200'	CHIEF OF DESK
DRAWN: B.DAVIS	ASSISTANT CHIEF OF HARBOR ENGINEER
CHECKED: D. RAASCH	
DESIGNED: P. HOANG	
ENGR/ARCH	
CHIEF HARBOR ENGINEER	DATE

PERMIT MAP - AUTHORITY NO. P933

LOS ANGELES, SANITATION DISTRICT NO. 2



THE PORT OF LOS ANGELES
ENGINEERING DIVISION
425 S. PALMS VERDES STREET SAN PEDRO CA 90731-3909

DRAWING NUMBER
5-3707-2

DWG: E:\as\proj\p\LA\AS\ENGINEERING\53707-2\DWG\30 2019\53707-2.DWG USER: HOANG
 DATE: Apr 12, 2019 2:08pm XREF: SDDIR-POLA_BORNYER BORNY-CITY 4-3 4-3 4-2 IMAGES: 15_0487_17466: 15_0487_17466: 15_0487_17466: 15_0487_17466
 POLA\PROJ\53707-2_1-12\98