

BOARD OF PUBLIC WORKS  
MEMBERS

KEVIN JAMES  
PRESIDENT

AURA GARCIA  
VICE PRESIDENT

DR. MICHAEL R. DAVIS  
PRESIDENT PRO TEMPORE

JESSICA CALOZA  
COMMISSIONER

M. TERESA VILLEGAS  
COMMISSIONER

CITY OF LOS ANGELES

CALIFORNIA



ERIC GARCETTI  
MAYOR

OFFICE OF THE  
BOARD OF PUBLIC WORKS

DR. FERNANDO CAMPOS  
EXECUTIVE OFFICER

200 NORTH SPRING STREET  
ROOM 361, CITY HALL  
LOS ANGELES, CA 90012

TEL: (213) 978-0261  
TDD: (213) 978-2310  
FAX: (213) 978-0278

<http://bpw.lacity.org>

April 21, 2020

**Council Hearing – 04/28/2020**  
**Council File No. 20-0900-S8**

City Council  
Room No. 395  
City Hall

Honorable Members:

**ASSESSMENT HEARING # 6 – CENTRAL DOWNTOWN NO. 1**

Inasmuch as no one protested the assessments pursuant to the hearing scheduled this date, in connection with the maintenance for Central Downtown No. 1 - Street Lighting Maintenance Assessment District, the Board of Public Works recommends that the assessments therefore be confirmed.

Sincerely,

DR. FERNANDO CAMPOS,  
Executive Officer, Board of Public Works

FC:LC

CC: Director, Bureau of Street Lighting





DATE JAN 10 2020

C.D. 14

Honorable City Council  
of the City of Los Angeles

**CENTRAL DOWNTOWN NO.1  
STREET LIGHTING MAINTENANCE ASSESSMENT DISTRICT**

---

This report submits the proposed Ordinance of Intention to institute maintenance assessment proceedings for the above street lighting project.

**RECOMMENDATIONS**

1. Council adopt this report and the Ordinance of Intention, and that the proceedings be conducted in accordance with Sections 6.95 - 6.127 of the Los Angeles Administrative Code, Section 53753 of the California Government Code, and Proposition 218 (Articles XIII C and XIII D of the California Constitution). This includes Council holding a Public Hearing for the proposed District Diagram with City page numbers 15274 thru 15278.
2. Upon Council adoption of the Ordinance of Intention, the Bureau of Street Lighting be instructed to: Mail notices of the assessment ballot proceedings, and Mail assessment ballots (as required by Prop. 218) to the property owners in the lighting district.
3. Upon completion of Item 2 above, the City Clerk be instructed to conduct the assessment ballot proceedings (i.e. count, certify, and report the results of the assessment ballot proceedings to the Council).
4. Following the conclusion of the final public hearing, if a project has weighted "YES" votes equal to, or in excess of weighted "NO" votes, the Council shall deny the appeals, confirm the maintenance assessments, and adopt the Final Ordinance levying the assessments. If the weighted "NO" votes are in excess of weighted "YES" votes, Council will abandon the lighting district and proceedings in accordance with Proposition 218; and the affected street lighting system shall be removed from service or not be constructed.
5. A copy of this report be provided to each affected Council office and the Mayor's Office of Economic Development.

The passage of Proposition 218 on November 5, 1996, requires a vote of the property owners prior to Council confirming and levying the assessments for maintenance. Upon adoption of the transmitted Ordinance of Intention, the Council shall set a date for hearing appeals and the last day to receive completed assessment ballots. A hearing to be held by the Board of Public Works will be scheduled at least one week prior to the date of the public hearing for the City Council to review and resolve any appeals concerning the proposed maintenance assessments – as specified in the Engineer's Report. If the assessment ballot proceeding as required by Proposition 218 approves these assessments, the City Council may confirm and levy the assessments. If levied, the administration of this district may be combined with that of another district or districts in the future as provided in the Ordinance of Intention. Protests that are received, as described in the Administrative Code, are for the consideration of the Council, but are not binding. Only a weighted majority vote against the assessment is binding.

The assessments to be levied to pay for the cost and expenses of the work or improvements in the proposed CENTRAL DOWNTOWN NO.1 Street Lighting Maintenance Assessment District (or Sidewalk Maintenance Assessment District) fall within the (e)7 exemption of Prop 26. As set forth in the accompanying Ordinance of Intention, said assessments will be imposed in accordance with the provisions of Article XIII D of the California Constitution.

In accordance with Council Policy adopted on December 11, 1998, the Bureau of Street Lighting will cast ballots in favor of the assessments for all Council controlled public properties in the district.

### SUMMARY

TOTAL STREETLIGHTS:	407
AFFECTED PARCELS:	54
TOTAL ASSESSMENTS:	\$ 123,537.10
TAX YEAR:	2019/2020
TYPE OF PROJECT:	STREET LIGHTING PROJECT

### TRANSMITTALS

1. Ordinance of Intention, approved as to form and legality by the City Attorney, for the proposed assessment district.
2. Engineer's Report as required by Proposition 218.
3. Proposed assessment roll.
4. Diagram delineating those lands proposed to be assessed.

Report prepared by:  
Assessment Engineering Division  
Proposition 218 Compliance Section  
L. Dam, Street Lighting Engineering Associate II  
Ruben Flamenco, P.E., Division Manager

Respectfully submitted,

*Ruben Flamenco for*  
Norma Isahakian, Executive Director  
Bureau of Street Lighting

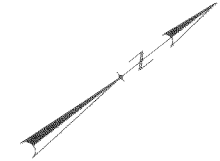
LAND USE METHOD

5161-6  
TRACT NO. 51742  
M.B. 1210-14-17

5161-2  
PARK TRACT  
M.R. 7-26-27

5161-2  
CHADWICK SUBDIVISION  
OF BLOCK 1,  
WOOLEN MILL TRACT  
M.R. 13-52

5161-3  
TRACT NO. 19838  
M.B. 775-88-89



SCALE  
1" = 100'

PRIOR TO THE FOLLOWING DATES, THE LISTED PARCELS WERE ASSESSED UNDER THE REFERENCE NUMBERS AS SHOWN:

DATE	PARCEL NO.	PREVIOUS REFERENCE DIST.	PAGE	PARCEL

COUNCIL DISTRICT NO.	14	5149	10
PROJECT ID NO.	4919	5161	2,3,4,5,6,10,11
		5161	12,13,14,15,26
C.M.B.		Page(s)	

DISTRICT OUTLINED BY *[Signature]*  
 DISTRICT CHECKED BY *Ruben Flamencos*  
 APPROVED **JANUARY 8**, 2020  
 Norma Isahakian, Executive Director  
 Bureau of Street Lighting  
 By *Ruben Flamencos For*  
 Engineer

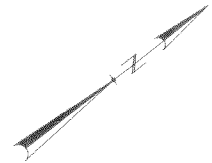
In. Serv.	Date	by	D.M.	1294213
				130-54213,130-54215
				132A211,132A213,132A215
				133-54211
Drawn	11-8-19	L.D.	W.B.	Plan
Checked	1-7-20	L.P.	L	1409730
Thomas Guide Page	634	Grid		3F,3G,4F,4G

MAINTENANCE ASSESSMENT DIAGRAM  
 FOR PROPOSITION 218 REQUIREMENTS  
 SHOWING LOCATION OF ELECTROLERS AND THE  
 EXTENT OF THE TERRITORY INCLUDED WITHIN THE  
 ASSESSMENT DISTRICT  
 FOR THE FURNISHING OF ELECTRIC ENERGY & MAINTENANCE FOR  
 THE LIGHTING OF SAID DISTRICT IN THE CITY OF LOS ANGELES  
 NORMA ISAHAKIAN, EXECUTIVE DIRECTOR - BUREAU OF STREET LIGHTING  
 THE EXTERIOR BOUNDARIES OF THE ASSESSMENT DISTRICT ARE SHOWN  
 --- NEW BOUNDARY

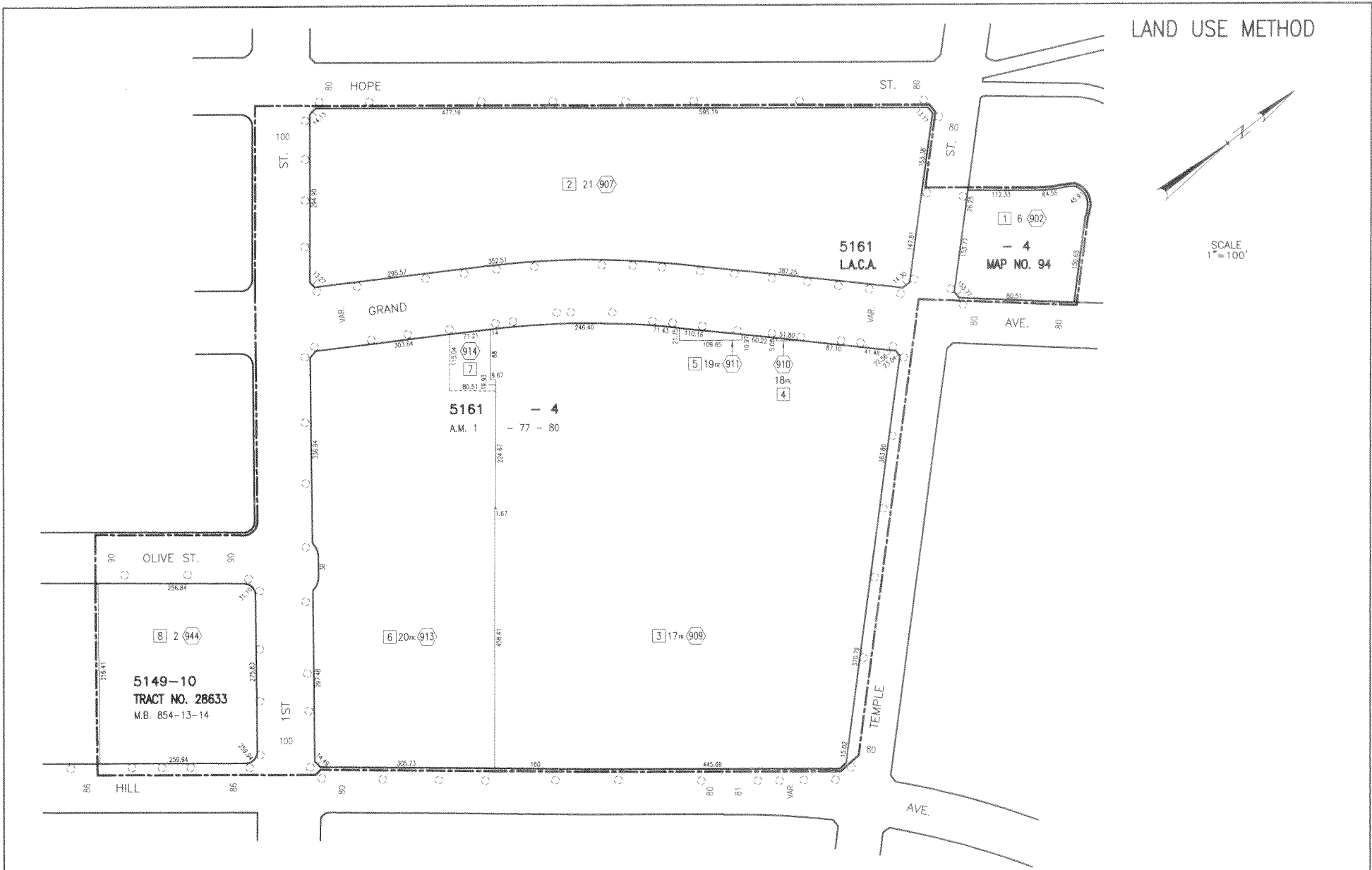
- (A) Indicates L.A. County APN
- (B) Indicates L.A. City Assessment Number
- (C) Indicates New or Future LED Equipment @ 2, 2 or 3.

Grid	Revision Description	Date	by	Title	Page	Sheet No.
				<b>CENTRAL DOWNTOWN NO.1 L.D.</b>	<b>15274</b>	<b>1 of 5</b>

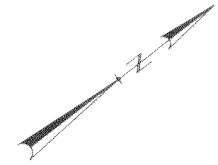
LAND USE METHOD



SCALE  
1" = 100'



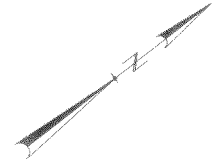
LAND USE METHOD



SCALE  
1" = 100'

\\164V\FDATA\PI\BSL\_Data\OPCSO\CAD\autocad\_diaorams\central-downtown1.dwg Jul 02, 2019 - 11:56am

LAND USE METHOD



SCALE  
1"=100'

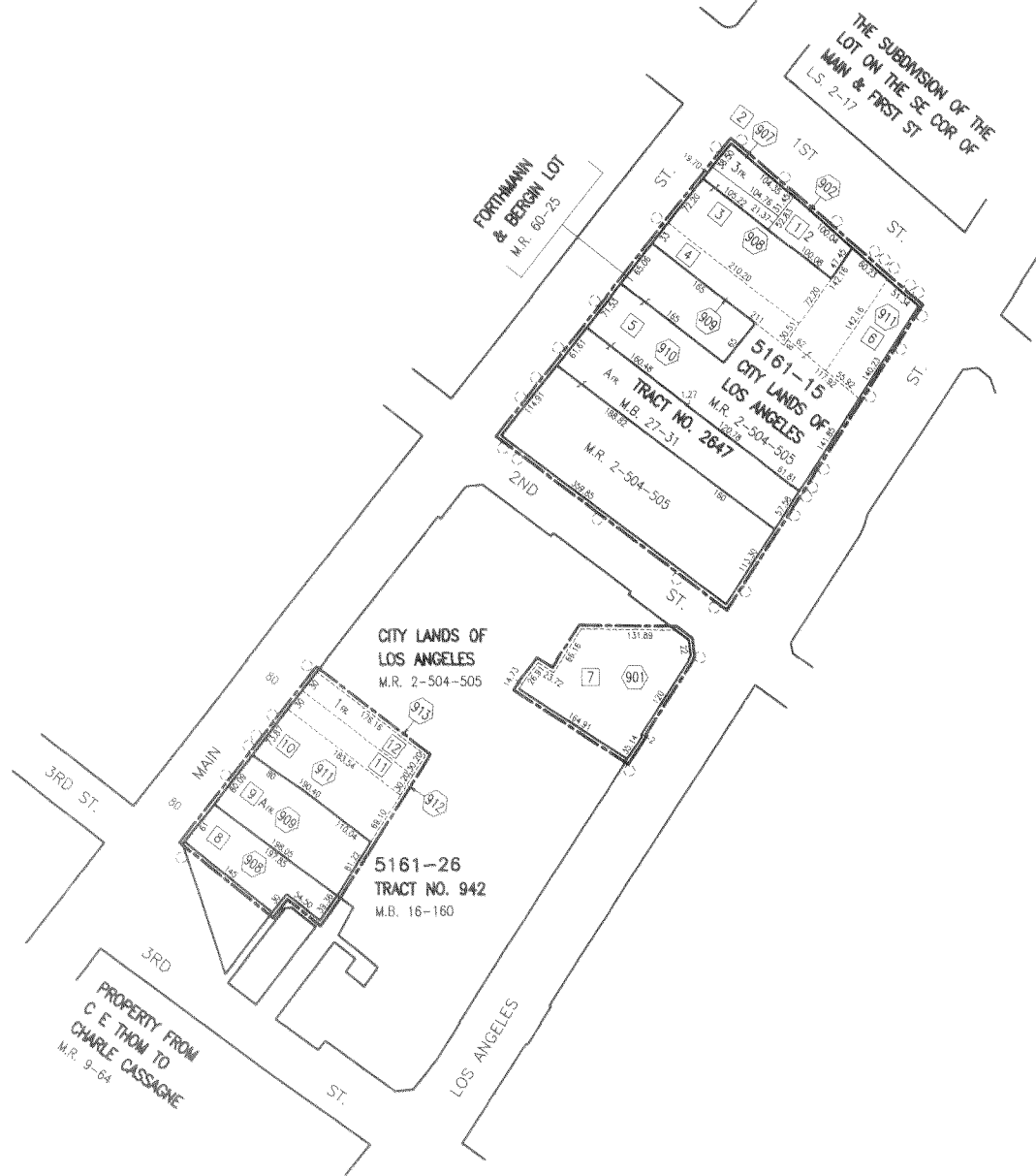




LAND USE METHOD



SCALE  
1"=100'



\\S:\DATA\TABLES\BSP - Data\DDPS\DATA\locat\AP - documents\central-downtown-no.1-ld - 15278 - 1-25.dwg

