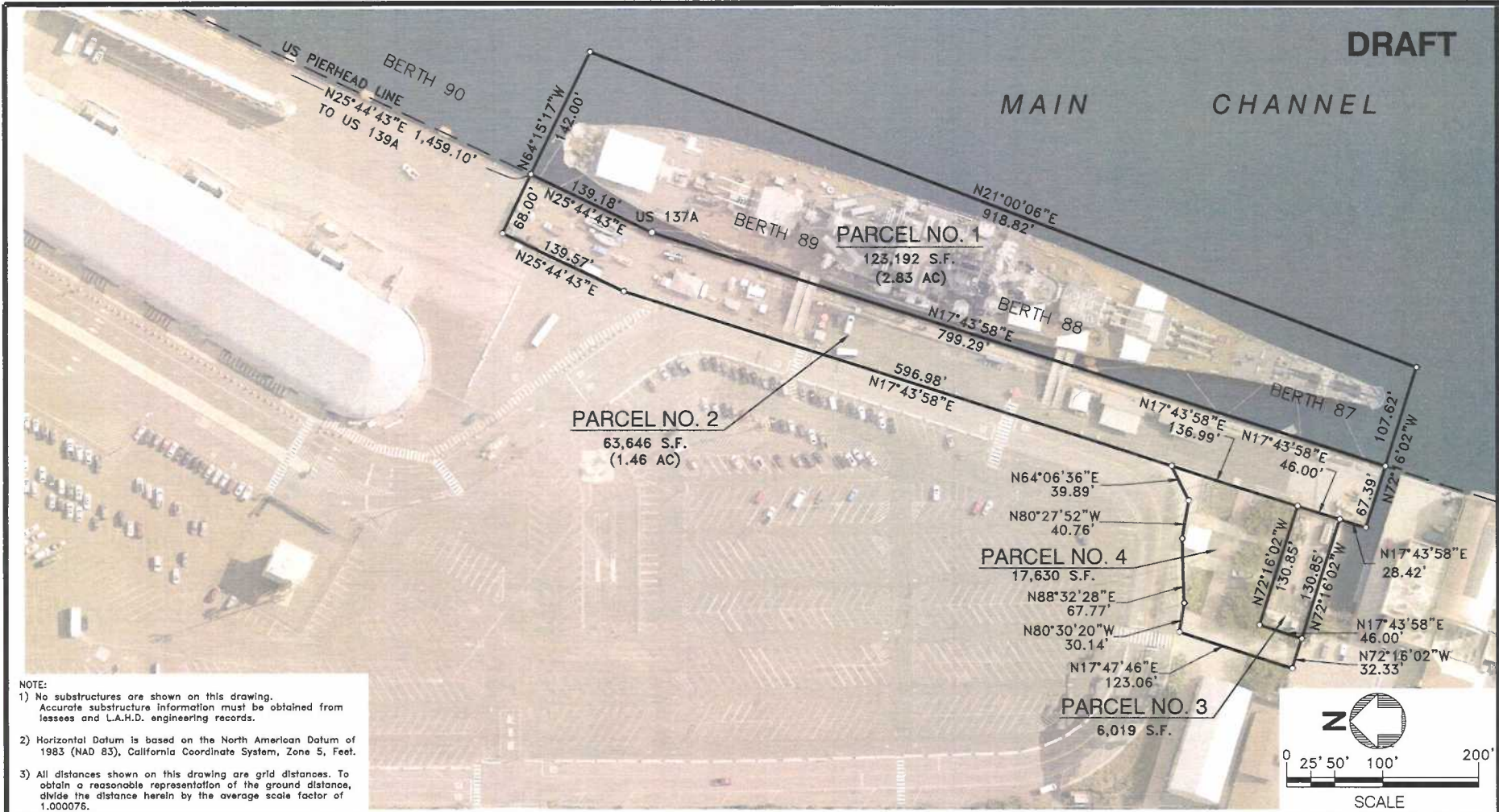


DRAFT

MAIN CHANNEL



NOTE:
 1) No substructures are shown on this drawing. Accurate substructure information must be obtained from lessees and L.A.H.D. engineering records.
 2) Horizontal Datum is based on the North American Datum of 1983 (NAD 83), California Coordinate System, Zone 5, Feet.
 3) All distances shown on this drawing are grid distances. To obtain a reasonable representation of the ground distance, divide the distance herein by the average scale factor of 1.000076.

DWG: W:\projects\2014\20140502\20140502.dwg USER: hndm\p...
 PLO:\P894_PML_12789.dwg
 45636.DWG

NO. DATE DRAWN REVISIONS -				CH'KD	APP'D	SCALE: 1" = 100'	CHIEF OF DESIGN	PERMIT MAP - AUTHORITY NO. P899	
1	5/24	RH	ADDED PARCEL NO. 4			DRAWN: C. VENTURA	ASSISTANT CHIEF OF HARBOR ENGINEER	PACIFIC BATTLESHIP CENTER, USS IOWA	
						CHECKED: D. RAASCH		DRAWING NUMBER	
						DESIGNED: E. KHALVATI		45638	
						ENGR/ARCH		THE PORT OF LOS ANGELES ENGINEERING DIVISION 425 S. PALOS VERDES STREET SAN PEDRO CA 90731-3309	
							CHIEF OF HARBOR ENGINEER	DATE	