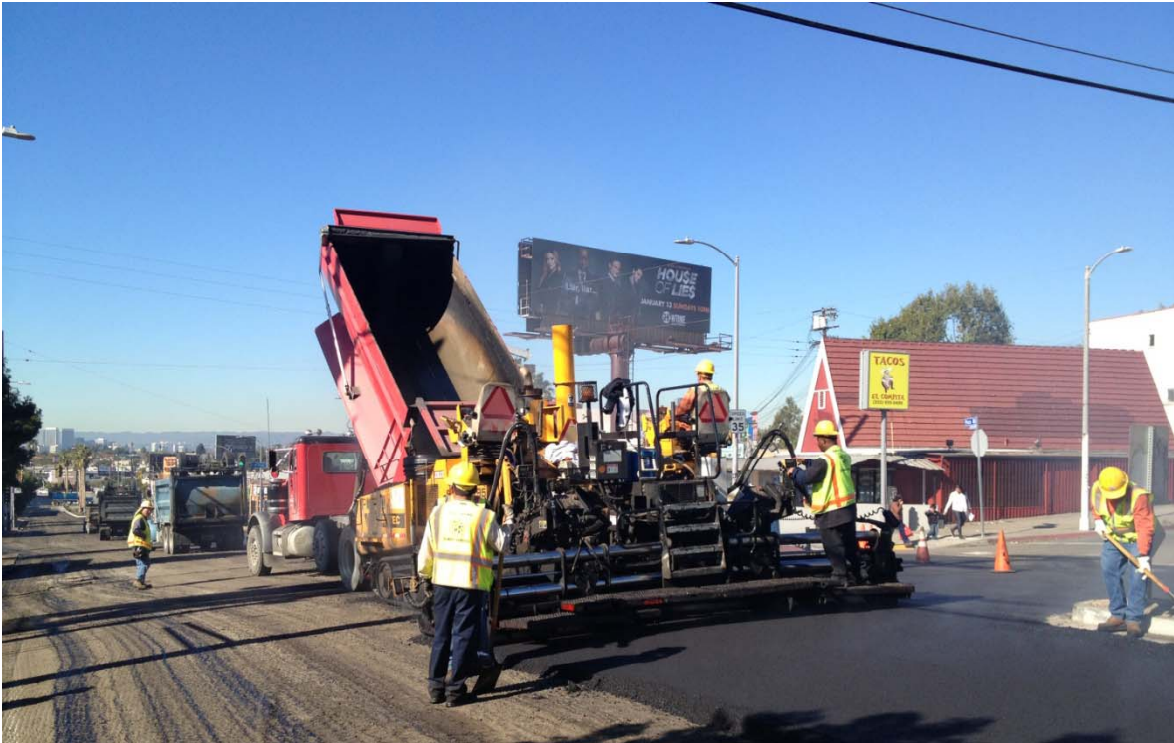


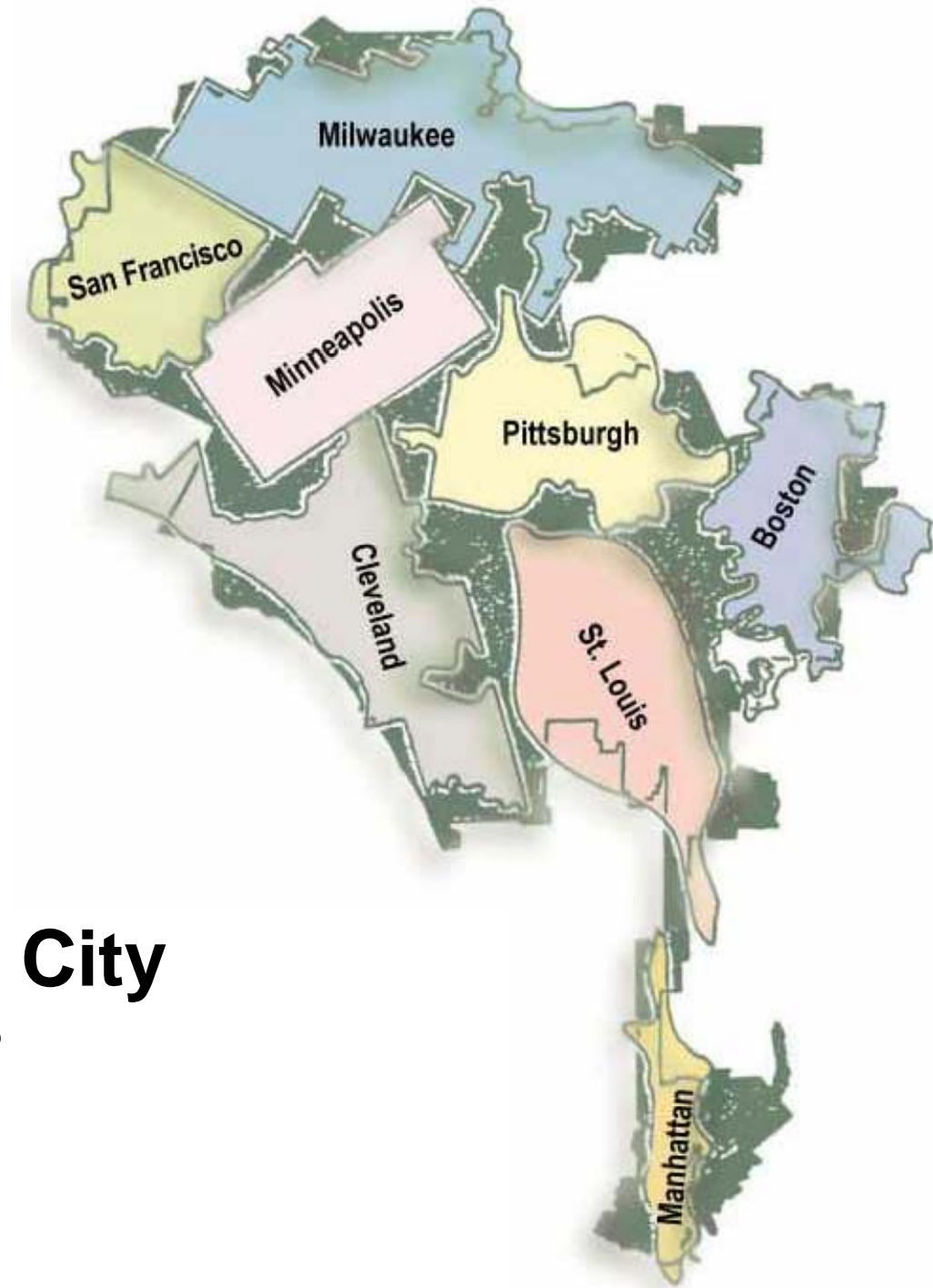


Pavement Management:
A Data-Driven Strategy to Improve the Quality
of the Street Network in the City of Los Angeles



Presented by:

***Nazario Saucedo, Director
Bureau of Street Services***



**How large is the City
of Los Angeles?**

CITY OF LOS ANGELES

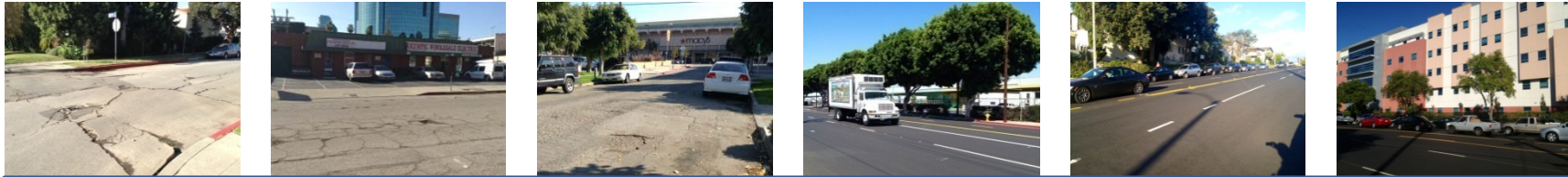
Largest municipal street system in
the United States

6,500 Centerline Miles

800 Alley Centerline Miles

28,000 Lane Miles

69,507 Segments



Street Segments are inspected, analyzed and graded:
MicroPAVER determines the most cost-effective
maintenance or rehabilitation technique.



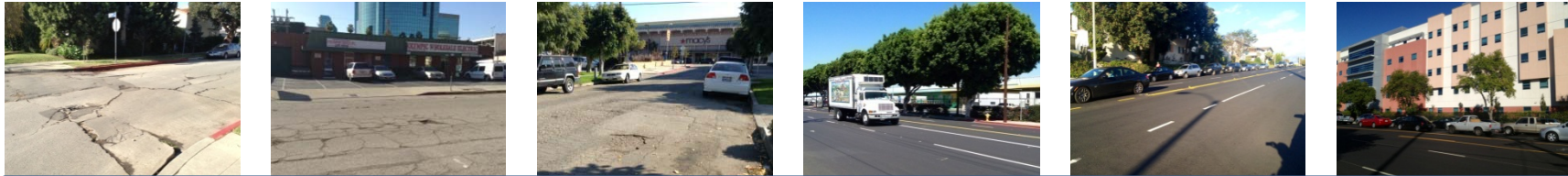
1. The Bureau of Street Services inspects the condition of every LA street in a three-year cycle, using a sophisticated van with high definition (HD) video cameras and laser measuring devices.



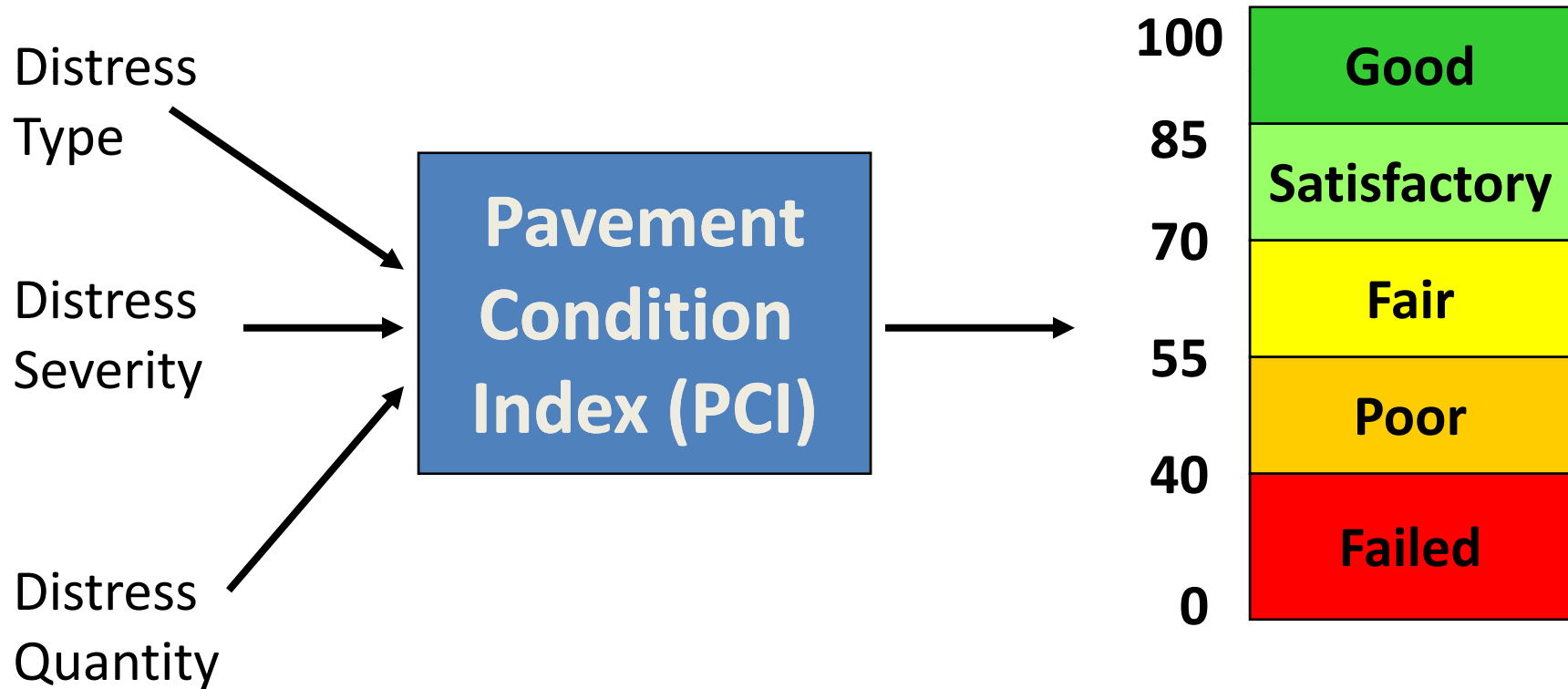
2. HD video images of road surface distress are analyzed, categorized and entered into MicroPAVER database. Streets quality is scored from 0 to 100.

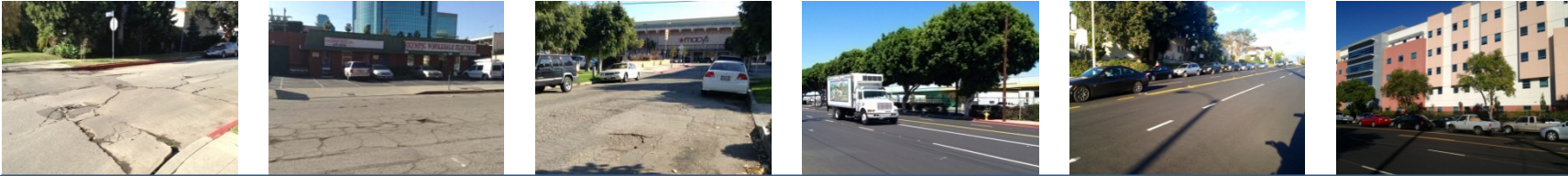


3. Maintenance and rehabilitation activities are prioritized by MicroPAVER based on the most cost-effective strategy to prevent further degradation of the street segment.



Los Angeles uses the internationally accepted MicroPAVER rating system to assign a numerical grade to the road surface condition of each city street.

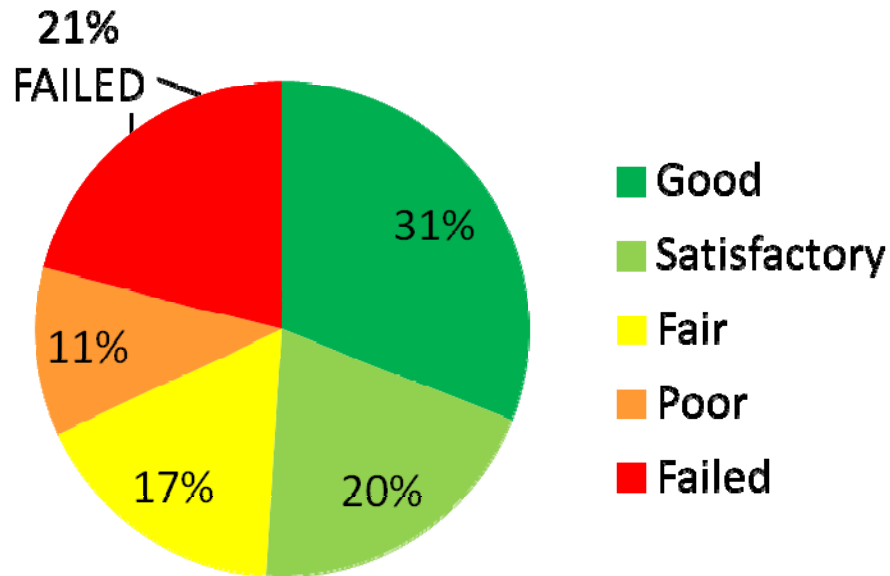




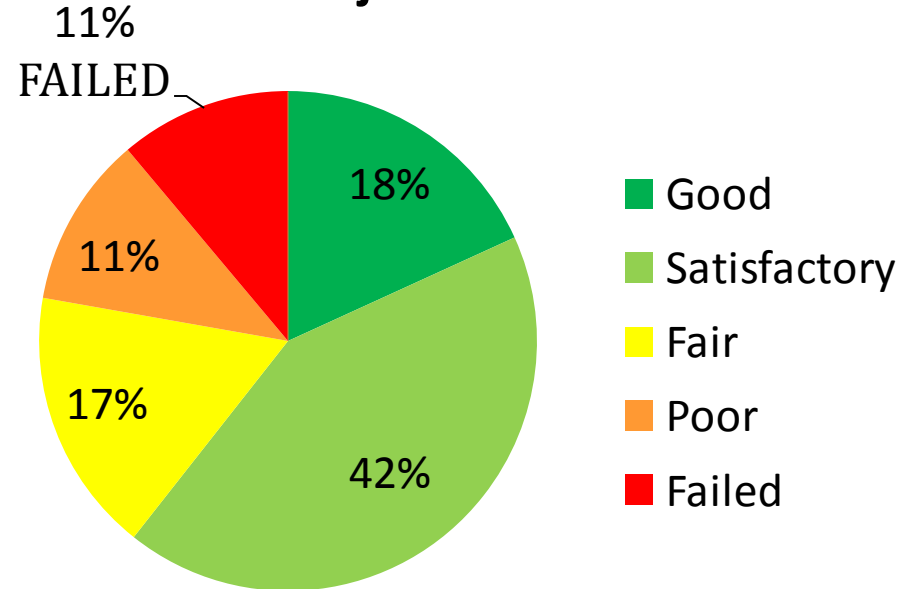
Condition of LA Streets from 2011 Report

From the 1950's to 2000, thousands of lane-miles of LA streets were not resurfaced and were allowed to deteriorate to "failed" condition. Approximately 8,700 lane-miles of streets failed during that period and require costly reconstruction.

Road Surface Condition: Residential Streets



Road Surface Condition: Major Streets



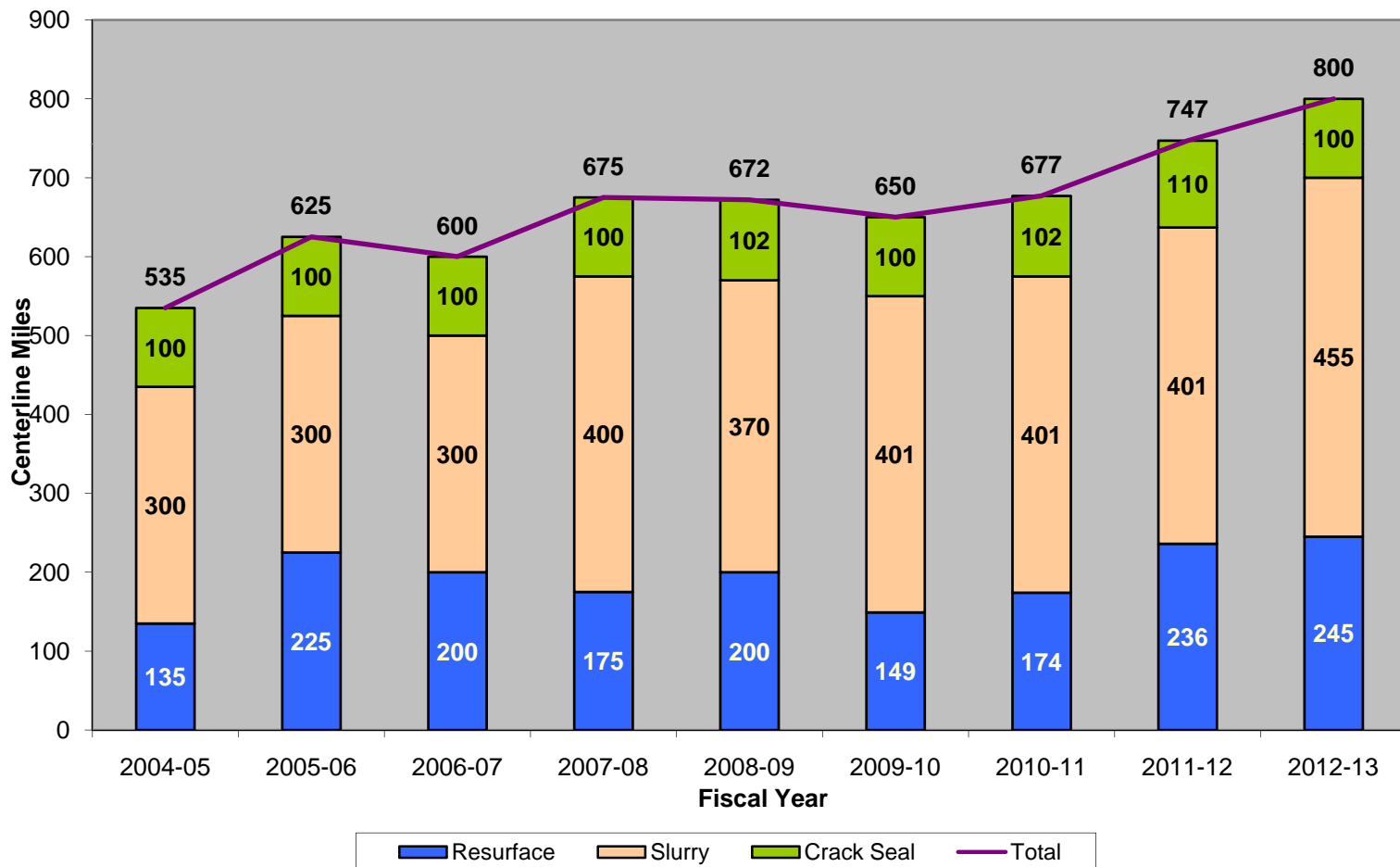
How Did We Get In This Mess?

- Prior to World War II the City was comprised of approximately 2,500 miles of paved streets and the Annual Resurfacing Program (ARP) consisted of 50 miles.
- After World War II, and the rapid growth of the San Fernando Valley the street system grew to 6,500 miles.
- Up until 1986, the ARP still consisted of only 50 miles of resurfacing.
- From 1987 to the early 1990's, the ARP was increased to approximately 150 miles.
- Fiscal Year 1994-95, the Bureau was funded for its first 200 mile ARP.
- This year the ARP is funded at 260 miles.



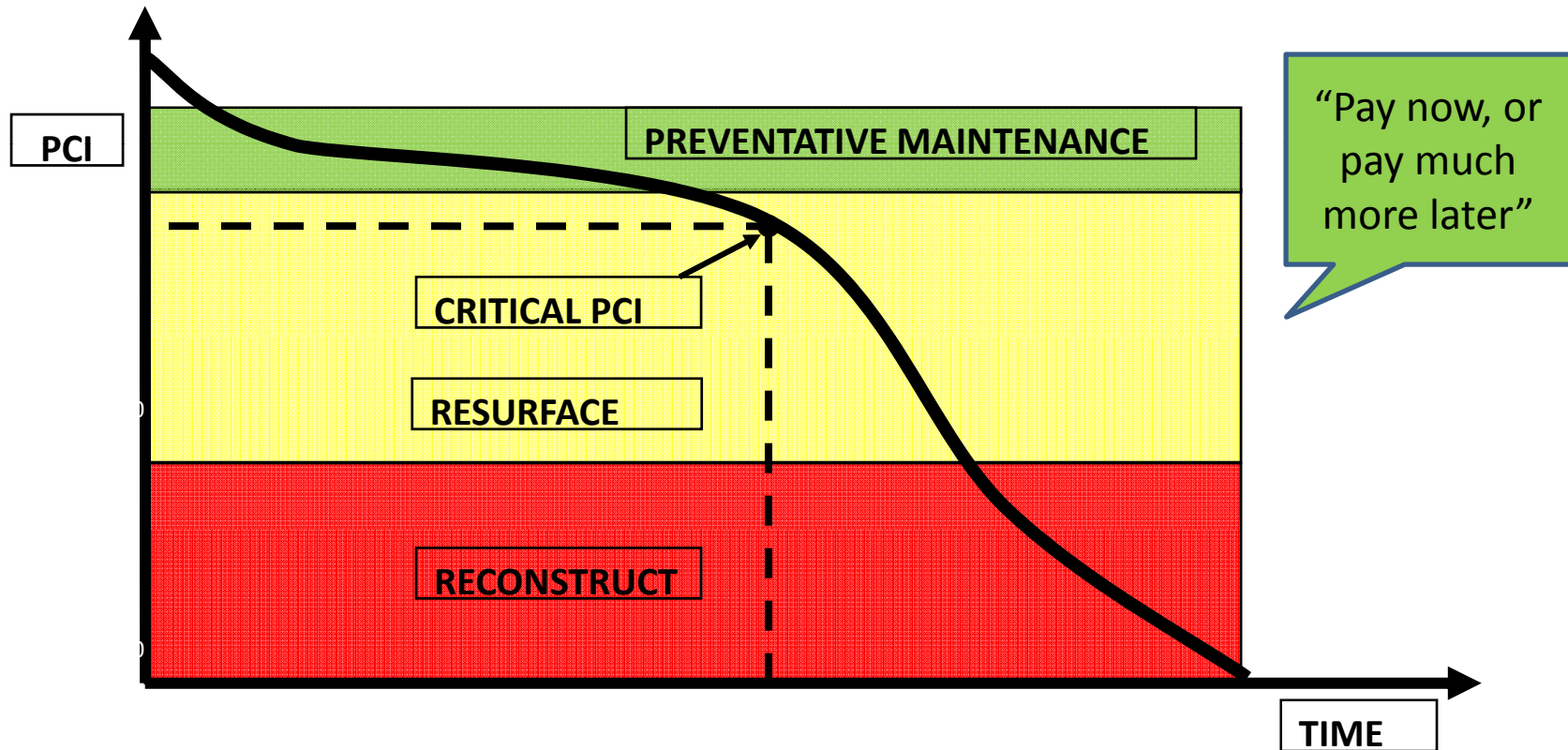
Pavement Preservation Miles have grown from 535 in FY05 to 747 in FY12, with an even higher goal for this year.

Miles Completed By Fiscal Year





Pavement Management determines the most cost-effective maintenance technique before a street further deteriorates.





Summary

Our Pavement Management system allows BSS to:

- Optimize the street network on a limited budget
- Define the most appropriate type of pavement preservation work
- Ensure that the maintenance work is performed at the right time