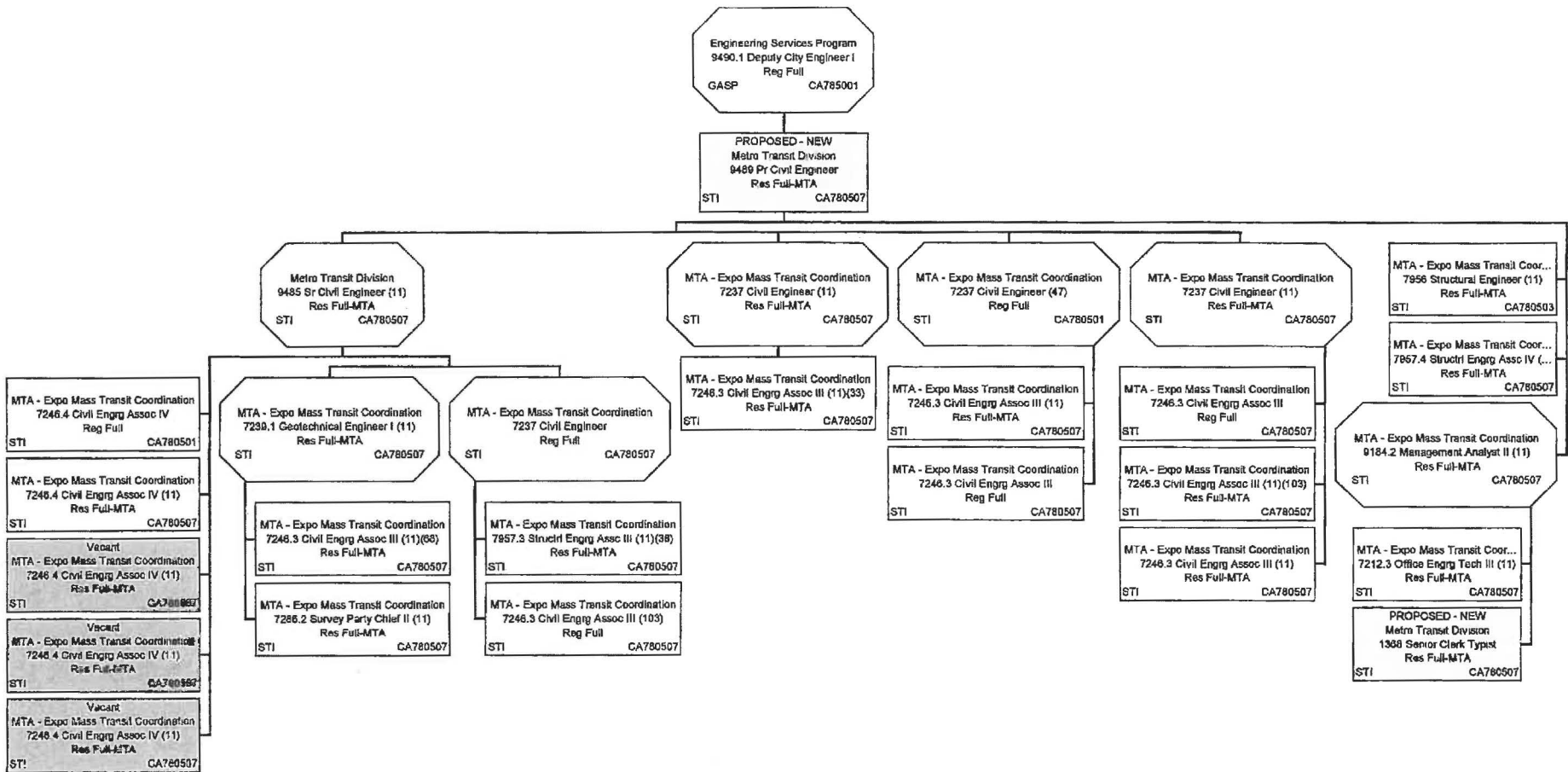
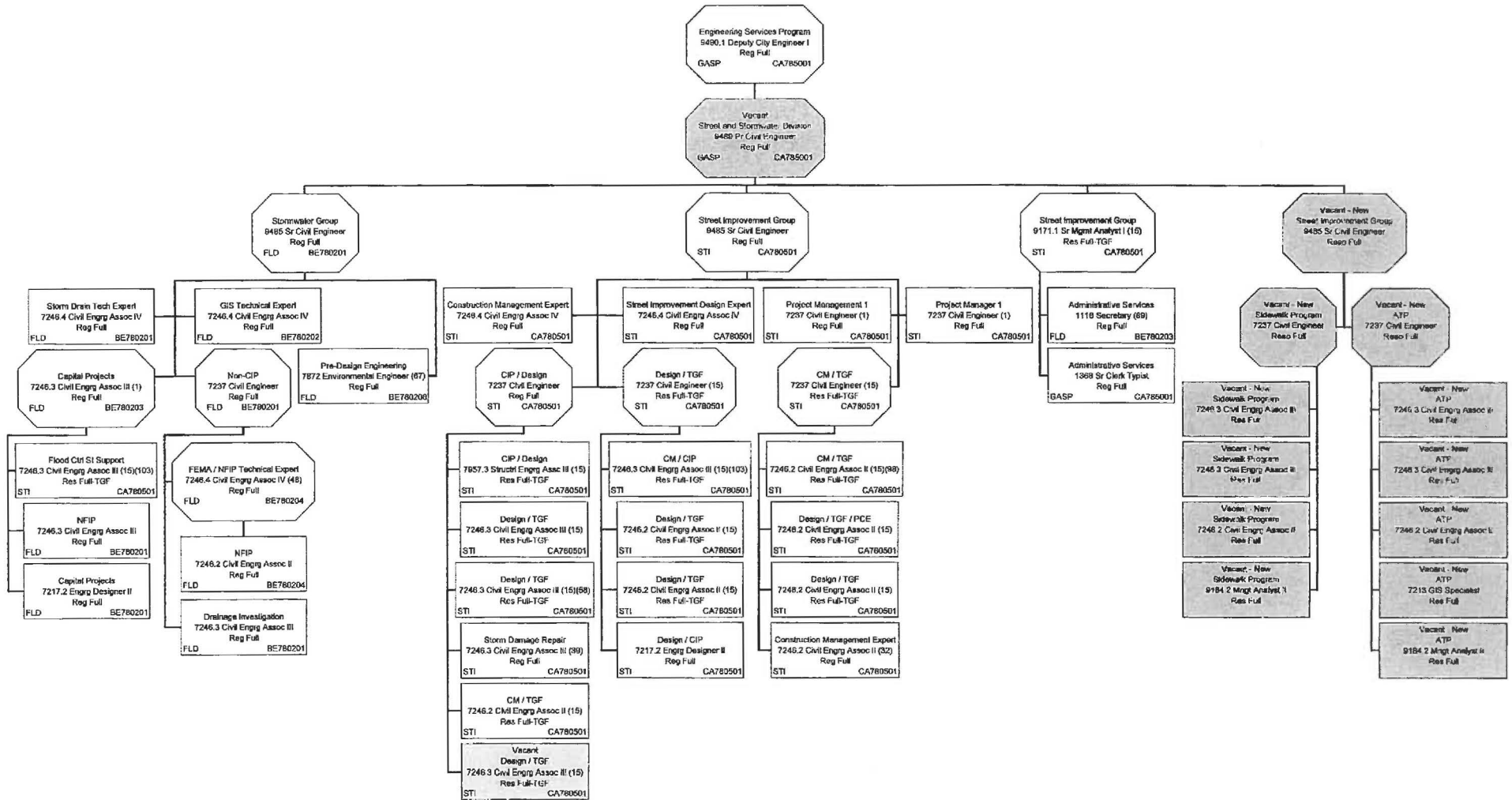


**BUREAU OF ENGINEERING
METRO TRANSIT DIVISION (MTD)
2014-2015 PROPOSED ORGANIZATION CHART**



**BUREAU OF ENGINEERING
STREET AND STORMWATER (SSD)
2014-2015 PROPOSED ORGANIZATION CHART**



MOTION

There are several major Metro rail projects currently underway in the City, including the following: Expo Line Phase II; Crenshaw/LAX Line; Regional Connector Project; and the Purple Line Extension. The Department of Public Works, Bureau of Engineering (BOE), is responsible for the review and permitting of improvements in the public right-of-way to ensure conformance with City design standards. BOE has a dedicated Metro Transit Group (Transit Group) that manages and performs design reviews of Metro and Expo projects. The Transit Group currently falls under the Stormwater Division.

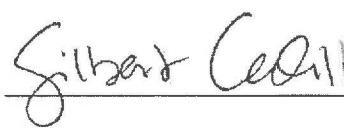
Recently, the workload of the Transit Group has increased substantially, in that several major Metro transit design-build projects are moving into the construction phase. The size, complexity and urgency of the transit projects often demand high-level management problem solving and leadership. As a consequence of this increased workload, BOE has concluded that it is in the best interest of the City and Metro to take the Transit Group and create an additional new division. The size of the Transit Group, at twenty-five positions, further supports the need for an additional dedicated division manager and for increased clerical services to provide document management and correspondence services.

To effectuate this expanded role in delivering Metro and Expo projects, BOE is requesting one (1) new Principal Civil Engineer and one (1) new Senior Clerk Typist. It is projected that the current Annual Work Programs for major projects going forward (Crenshaw/LAX, Regional Connector, and Purple Line Extension) will support the two proposed positions for the life of these projects, approximately through 2025. Work performed by the newly proposed division will be fully reimbursed by Metro and has no impact on the General Fund.

I THEREFORE MOVE that the City Council, with the concurrence of the Mayor, take the following actions:

1. Add resolution authority for one Principal Civil Engineer (Class Code 9489) position and one Senior Clerk Typist (Class Code 1368) position in the Bureau of Engineering, subject to allocation, for a new Metro Transit Division from January 25, 2015 through June 30, 2015.
2. Direct the Personnel Department to expedite the allocation of these positions for consideration.
3. Direct the City Engineer to request the continuation of these two positions and the Metro Transit Division as part of the Bureau of Engineering's 2015-16 Proposed Budget.

PRESENTED BY: 
MIKE BONIN
Councilmember 11th District

SECONDED BY: 

JAN 16 2015

ORIGINAL

