

RESOLUTION

WHEREAS, the subject project is located within the area covered by the Mission Hills - Panorama City - North Hills Community Plan adopted by the City Council on June 9, 1999; and

WHEREAS, the City Planning Commission recommended approval of a General Plan Amendment from Low Residential to Community Commercial for the subject property; and recommended approval of a Zone Change from R1-1, R1/P-1 and P-1 to (T)(Q)C2-1 for the subject property; and

WHEREAS, the approved project is for the demolition of approximately 39,528 square feet of the approximately 131,500 square feet of existing commercial space, and the full demolition of the two single-family homes on the north end of the site (approximately 3,475 square feet), and the construction of approximately 67,467 square feet of new commercial development for a total of 159,439 square feet of commercial development; and

WHEREAS, the City Planning Commission at its meeting on March 10, 2016 approved the General Plan Amendment and recommended approval by the City Council of a General Plan Amendment over the subject property; and

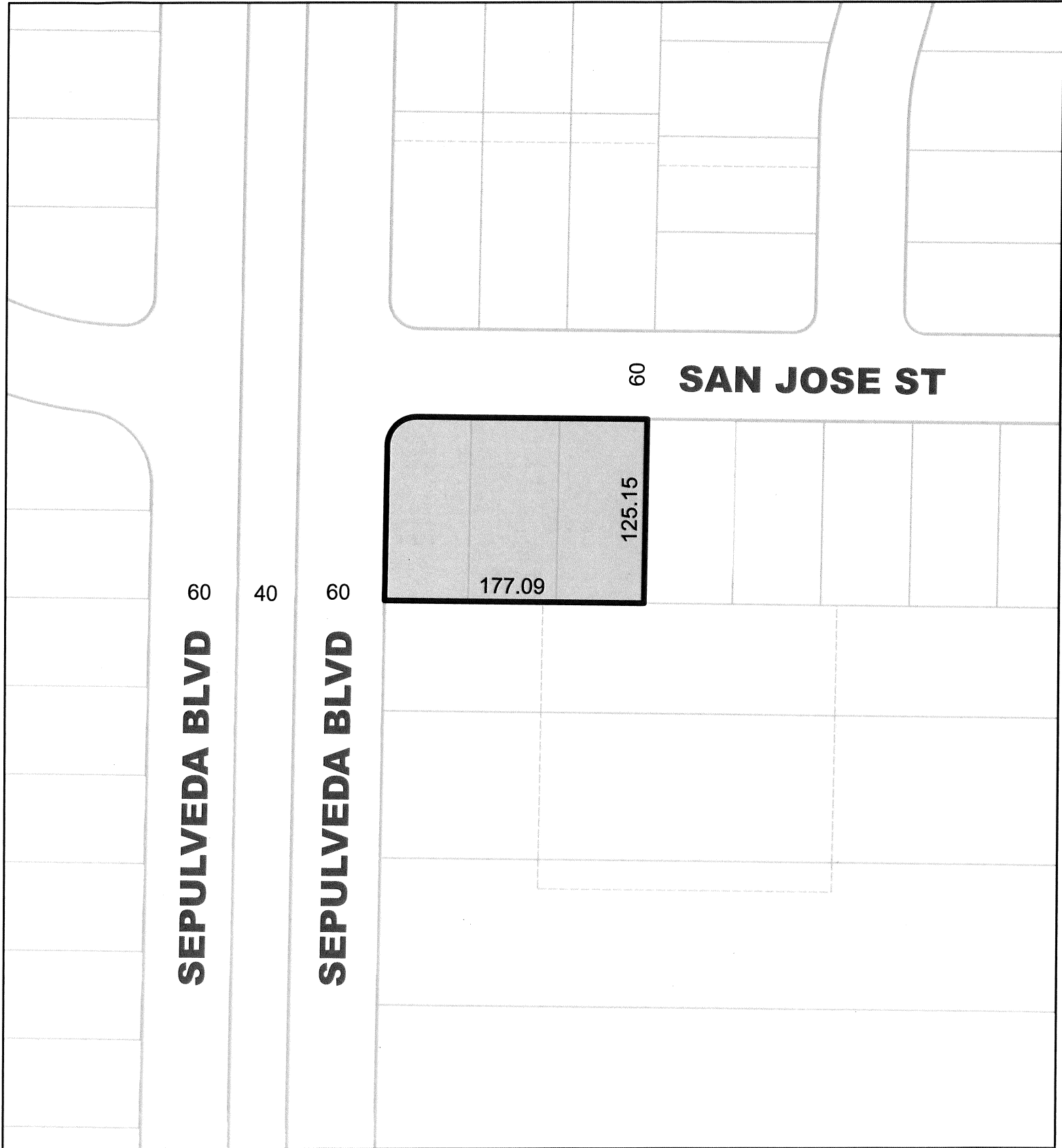
WHEREAS, pursuant to the provisions of the Los Angeles City Charter, the Mayor and City Planning Commission have transmitted their recommendations; and

WHEREAS, the requested General Plan Amendment is consistent with the intent and purpose of the adopted Mission Hills - Panorama City - North Hills Community Plan to designate land use in an orderly and unified manner; and

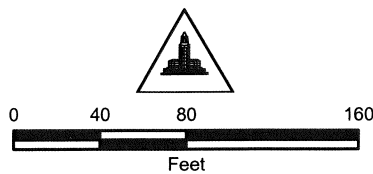
WHEREAS, the Community Commercial land use designation and the (T)(Q)C2-1 Zone Change will allow the project as described above which is consistent with the Plan and Zone; and

WHEREAS, the subject proposal has prepared a Mitigated Negative Declaration No. ENV-2015-3424-MND in accordance with the City's Guidelines for implementation of the California Environmental Quality Act (CEQA);

NOW, THEREFORE, BE IT RESOLVED that the Mission Hills - Panorama City - North Hills Community Plan be amended as shown on the attached General Plan Amendment map.



 **COMMUNITY COMMERCIAL**



C.M. 207 B 145 CPC-2015-3423-GPA-ZC-CU-CUB-ZV

AAVae Mission Hills - Panorama City - North Hills 032416

City of Los Angeles

