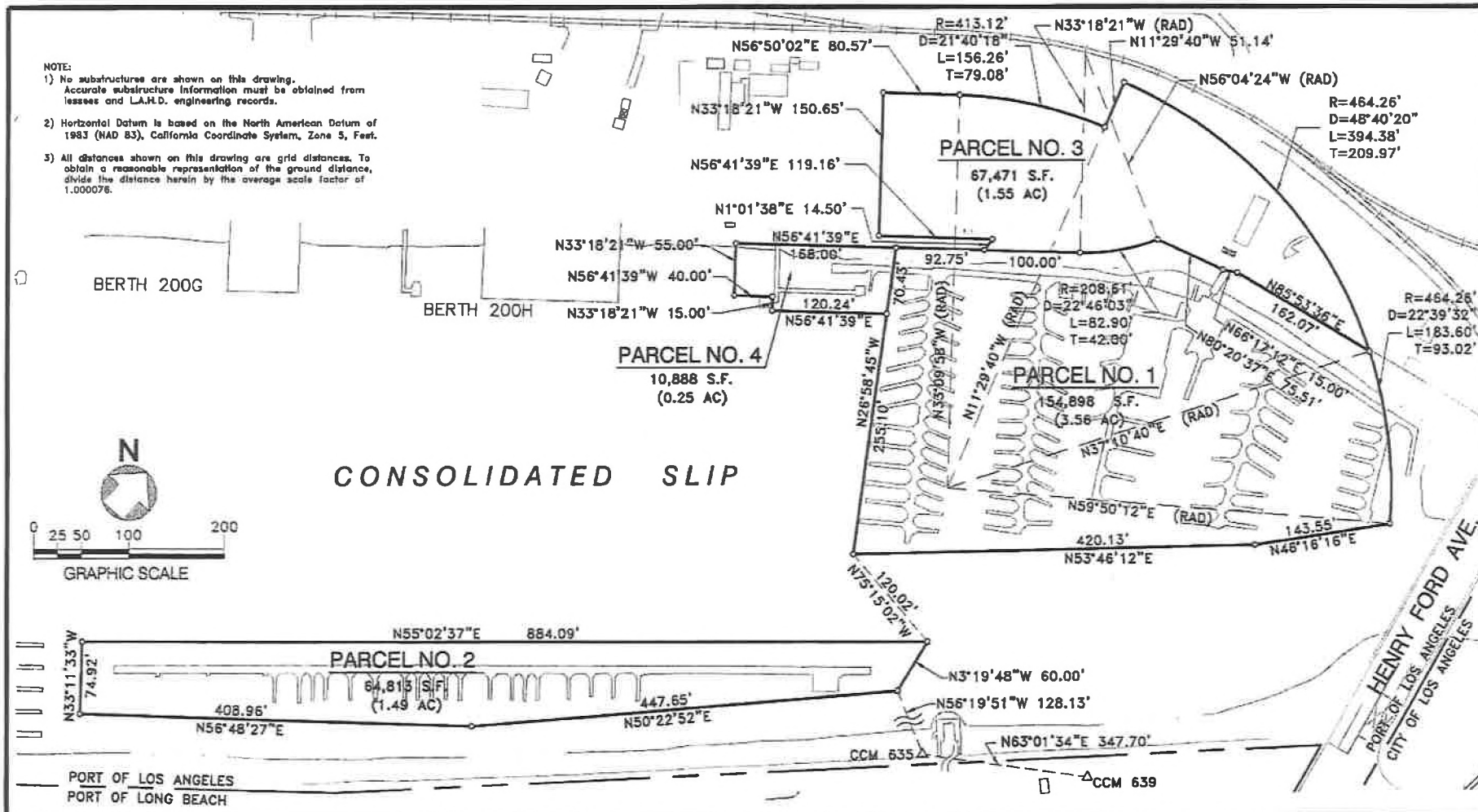


NOTE:

- 1) No substructures are shown on this drawing. Accurate substructure information must be obtained from leases and L.A.H.D. engineering records.
- 2) Horizontal Datum is based on the North American Datum of 1983 (NAD 83), California Coordinate System, Zone 5, Feet.
- 3) All distances shown on this drawing are grid distances. To obtain a reasonable representation of the ground distance, divide the distance herein by the average scale factor of 1.000076.



NO.	DATE	DRAWN	REVISIONS -	CHK'D	APP'D	SCALE: 1"=100'	RECOMMENDED FOR APPROVAL	PERMIT MAP - AUTHORITY NO. RP1487		
1	7/14	DRR	REVISED PARCEL NO. 3	BAR	<i>[Signature]</i>	DRAWN: M. GUTIERREZ (6/04) CHECKED: E. KHALVATI (6/04) DESIGNED: GUTIERREZ (6/04) ENGR/ARCH <i>Tonyl R. Rasmussen</i>	CHIEF OF DESIGN <i>[Signature]</i> ASSISTANT CHIEF HARBOR ENGINEER <i>[Signature]</i>	APPROVED 7/6/04 <i>[Signature]</i> CHIEF HARBOR ENGINEER	LEEWARD BAY MARINA 	DRAWING NUMBER 45682-2

FOURPARCEL_001_17/14