



CUSTOMERS FIRST

Red Cloud Wind Project

Energy, Climate Change and Environmental Justice Committee

*Item Number 3
Council File Number 20-1217
October 20, 2020*

AGENDA – Presentation Topics

1. Red Cloud – Best Fit, Least Cost
2. About the Wind Developer
3. Project Location
4. Project Summary
5. Power Purchase Agreement Milestone Dates
6. Contribution of Red Cloud to RPS Goals
7. Questions

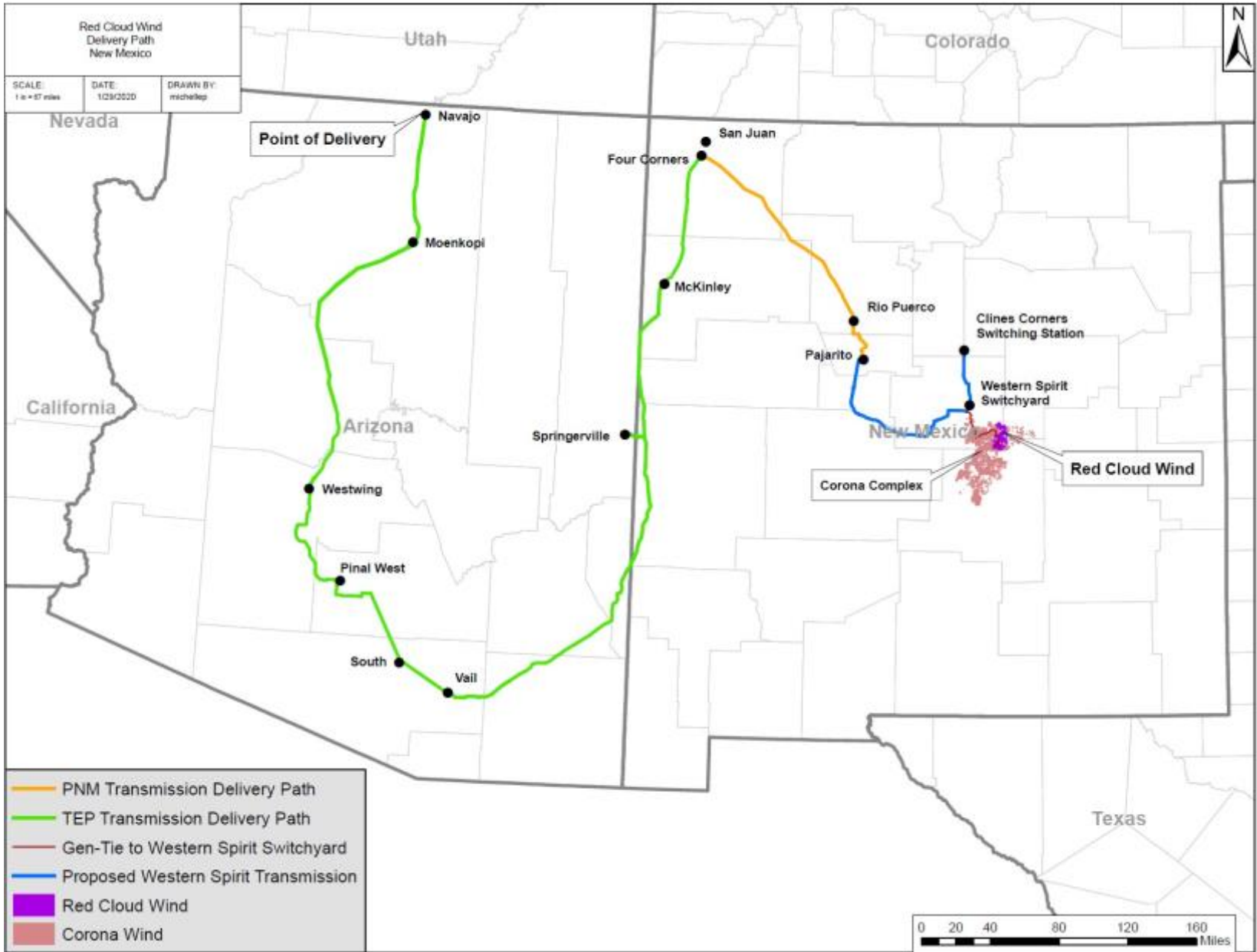
Red Cloud – Best Fit, Least Cost

- The Red Cloud Wind Project was selected out of 105 proposals as part of Southern California Public Power Authority's (SCPPA) rolling Renewable Portfolio Standard (RPS) Request For Proposal (RFP)
- High Capacity Factor
- Diversification of renewable resources
- Competitive Renewable Energy Price
- In-service by December 2021
- Maximize existing LADWP's transmission capacity
- Future ownership options

About the Wind Developer

- Pattern Energy is a leading U.S. based independent renewable energy company.
- Portfolio includes 28 utility-scale projects in operation in the United States, Canada, and Japan totaling over 4 GW of capacity.
- Development pipeline of more than 10 GW of wind, solar and energy storage projects around the world.

Red Cloud Wind Project Location



Project Summary

Renewable Technology	Wind – each turbine 2.5 to 2.8 MW
Location	New Mexico
Term of PPA	20 Years (with two additional periods of 5 years)
Total Capacity	331 MW
Energy Price (per MWh)	\$43.00 (80% PTC) \$41.00 (100% PTC)
Capacity Factor	46 percent
Expected Annual Generation	1,334,000 MWh
Point of Delivery	Navajo 500kV Switching Station
Commercial Operation Date	December 2021
4% Curtailment	Optional after 11 th year
RPS Percentage	6.0 %



Purchase Option	13 th year and end of term
Purchase Price	Based on Fair Market Value
Rate Impact with Fuel and GHG Allowance Savings	0.050 cents per kilowatt-hour or an additional \$1.80 annually per residential customer

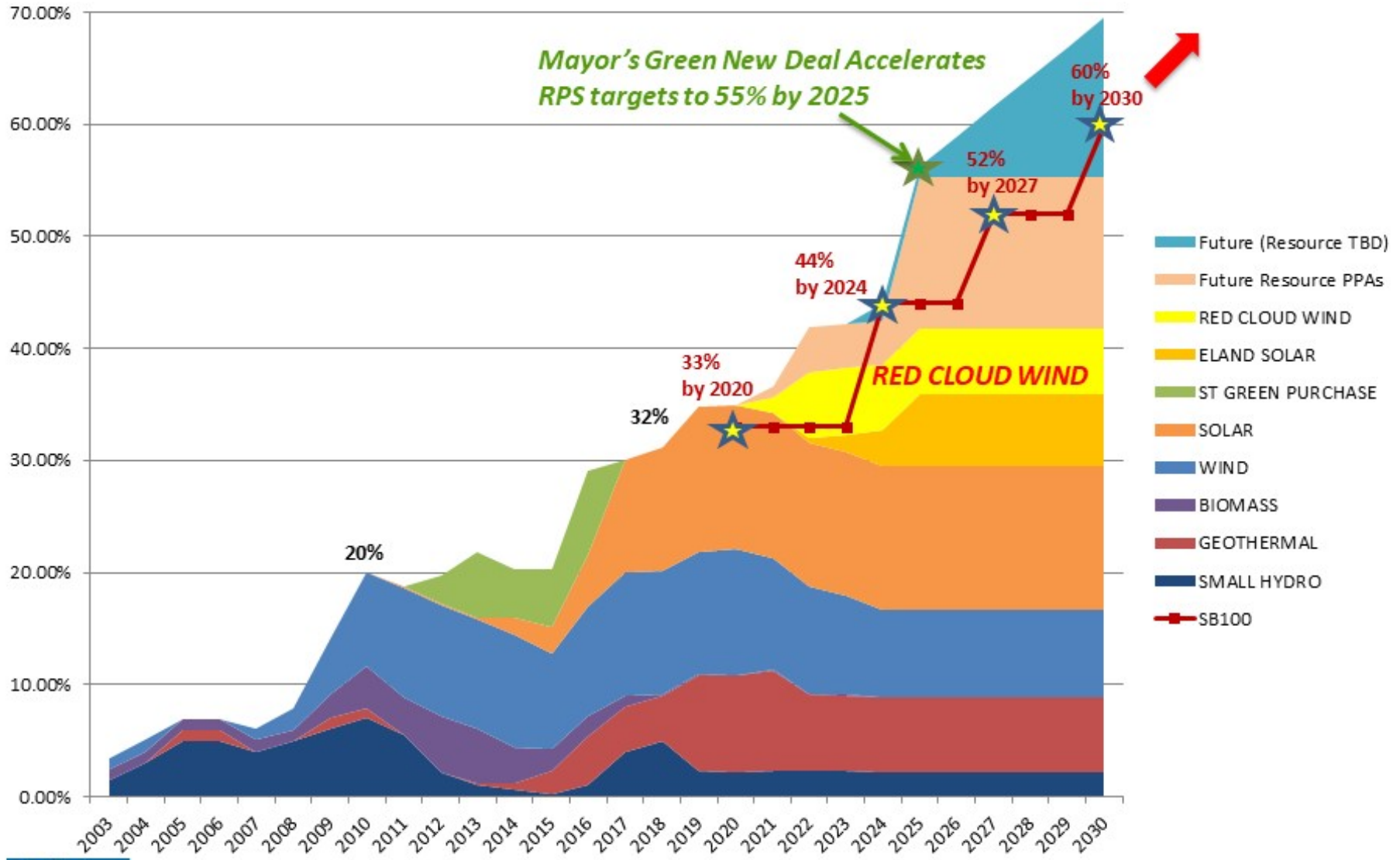
Impacts to the Environment

Expected Annual Generation	1,333,797 MWh
Residential Homes Served	222,300 homes
Cars not driven	99,830 cars
CO2 Emissions Avoided	464,040 metric tons per year
Natural Gas Not Burned to Generate Electricity	8,523 million standard cubic feet per year

Power Purchase Agreement Milestone Dates

- December 2020 Deliver a Notice to Proceed with Construction
- October 2021 Complete Construction of Western Spirit Transmission Line
- December 2021 Guaranteed Commercial Operation Date (COD)

CONTRIBUTION OF RED CLOUD WIND TO RPS GOALS



Questions